

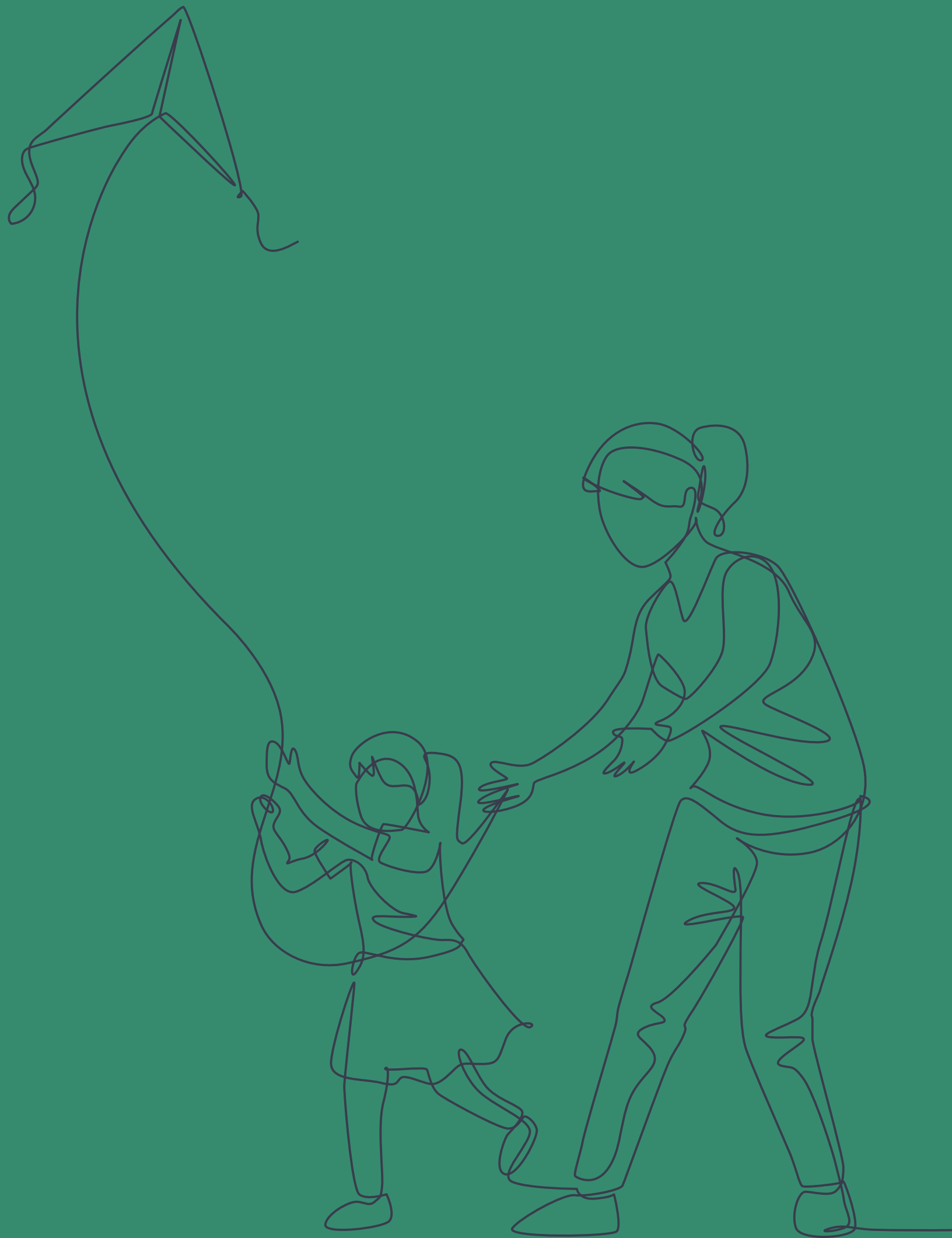
southbarrie



ASPENRIDGE

A CELEBRATION OF COMMUNITY





Contents

06	ASPIRE WITH ASPEN RIDGE
08	THE ASPEN RIDGE DIFFERENCE
11	FIND YOUR DESIGN INSPIRATION
15	COMMUNITIES OF DISTINCTION
16	ASPEN RIDGE COMMUNITIES NORTH OF THE GTA
18	CURRENT ASPEN RIDGE COMMUNITIES
32	A NEW COMMUNITY WITH HEART
38	LAKE SIMCOE'S SIGNATURE CITY
40	A UNIFIED CITY
42	FAMILY-FRIENDLY BARRIE
46	WHERE CONVENIENCE MEETS FUN
48	COMMUTER-FRIENDLY CONNECTIONS
50	EDUCATION & SCHOOLS
52	FOUR SEASONS OF FUN
58	WHEN THE PUCK DROPS
60	BARRIE FESTIVAL GUIDE
62	GREAT GREEN ESCAPES
64	DRIVING AMBITION: GOLF CLUBS
66	FABULOUS FINDS
70	GOURMAND ADVENTURE
74	SINGLE FAMILY HOMES FLOORPLANS



Aspire with Aspen Ridge



30 YEARS OF MOVING UP

With more than 30 years of experience, the founding family and colleagues at Aspen Ridge have built a generation of homes that consistently reflect uncompromising excellence in craftsmanship, quality and attentive customer care. The continual drive to exceed your expectations means Aspen Ridge utilizes the latest technological innovations in design and construction while offering a traditional customer-first approach.



The Aspen Ridge Difference

NEW SITE NEW FLOORPLANS

We do things differently at Aspen Ridge. Each new site of ours gets a whole new set of floorplans and elevations. We design only to the site and what the market needs and desires in that specific area. Perhaps it's a larger family room, home office capability or different closet configurations. Perhaps it's a sleek modern exterior in an area that has only seen traditional designs. Or it may be townhomes with bigger windowpanes, to flood interior spaces with abundant natural light.

UNIQUE DESIGNS FOR EACH COMMUNITY

From the beginning, we've never been a builder that's ever content to settle on an existing formula for home designs, perhaps adding an odd modification here or there. We continuously update our designs, and always re-examine changing lifestyles and what people want in their homes.

INTERIOR DESIGNER INPUT

At Aspen Ridge, we invite respected interior designers to assess almost all of our plans. We task these experts to enhance the vision of our architects. We strive to always add extra dimensions of comfort and ease-of-living for every one of our homebuyers.



EVERYONE GETS A SAY

Finally, our home plans are subjected to numerous internal reviews across the different departments in Aspen Ridge - from architecture to sales, marketing, contracts and construction, plus feedback from our customers. Our process provides us with a current and fresh point-of-view. We put it all together, and you benefit - with up-to-the-minute plans that reflect what's really important to today's homebuyer.



Find Your Design Inspiration

THE STUDIO AT ASPEN RIDGE

Inspiration meets incredible selection at the Aspen Ridge Design Studio. The 4,000-square-foot studio hosts an inspiring selection of premium décor, features and finishes for homeowners to begin customizing their dream home. As a South Barrie purchaser, you will be able to choose the latest in high-standard finishes to complement your personal style and aesthetic.

THE STUDIO

With the help of professional design consultants, the Studio will work alongside you as you choose the final touches that will make your South Barrie house a home. Brand name products are showcased on a grand scale in realistic vignettes with interactive, immersive displays, allowing you to visualize how the ultimate kitchen or spa bathroom of your dreams will look.

The Kitchen Display features built-in appliances and two islands; the Laundry Room offers a Doggy Wash, and the Bathroom Display features sleek glass shower enclosures. Featuring a wealth of choices in tile, countertops, flooring, and more, the design studio helps bring your vision to life.





Communities of Distinction

THE ASPEN RIDGE PORTFOLIO

Every Aspen Ridge community has a distinct identity, personality and aesthetic. Considering the natural elements of the neighbourhood and then applying their own insights, Aspen Ridge beautifully and effortlessly defines the essence of every thriving community. The result is a collection of spaces that truly represent everyone who lives there.



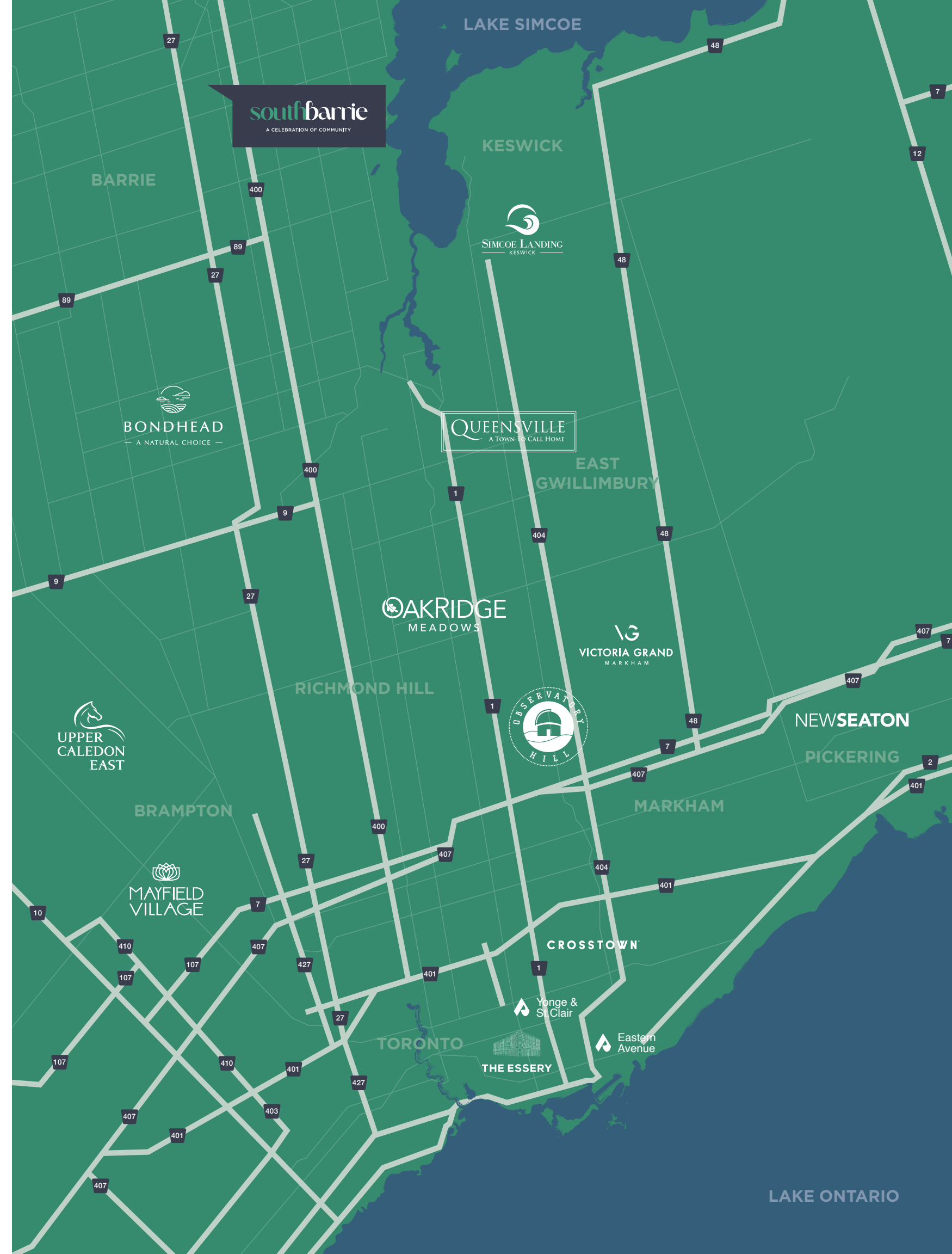
SUCCESSFUL ASPEN RIDGE COMMUNITIES NORTH OF THE GTA

Beyond the GTA, Aspen Ridge has created many highly successful new communities in southern Ontario north of the GTA. These welcoming communities in Bradford East Gwillimbury, Nobleton, and Keswick include projects such as Queensville, Bondhead, Simcoe Landing, and King Country Estates.



CURRENT ASPEN RIDGE COMMUNITIES

Aspen Ridge gracefully intertwines the paths of nature and human insights to define thriving communities. Each neighbourhood's distinct identity, personality and aesthetic are beautifully captured, resulting in spaces that truly represent their residents.





AVANTE GARDE LIVING IN MARKHAM

Victoria Grand is an innovative new community of homes at Warden Ave. and Elgin Mills Rd. in Markham. Offering a wide range of transitional and modern-style townhomes and single family homes, this community is a thoughtfully designed, master-planned community with exquisitely crafted architecture and design. Discover everything you need for a vibrant life, surrounded by beautiful streetscapes and state-of-the-art facilities, with access to outstanding area amenities close to home.

647.248.5028



FOLLOW YOUR PATH

A breathtaking community surrounded by lush nature, abundant wildlife and captivating landscapes welcomes you at Upper Caledon East. Choose from elegant single family homes ranging from 32' to 50', that seamlessly meld distinctive character with the beauty of nature.

647.402.9943

SIMCOE LANDING

KESWICK



EXPERIENCE NEW KESWICK

Simcoe Landing, a four seasons home community in Keswick, elegantly fuses the essence of the country with the convenience and connectedness of the city. With Highway 404 at your doorstep, find yourself in Markham, Newmarket or Aurora within 30 minutes, or reach Toronto in less than an hour. The world is yours to behold at Simcoe Landing.

905.535.1383

KESWICK AMENITIES

Closer than you think, Keswick is easily accessible via highway 404 in just 30 minutes from Markham, Newmarket and Aurora, and less than an hour from Toronto. Located on Cook's Bay, Keswick boasts a rich assortment of urban amenities including schools, major shopping centres, recreational facilities and gourmet eateries. A highlight of the community is the new \$41.5 million, 85,000 square foot, Georgina Multi-Use Recreation Complex, which boasts a 25-metre lane pool and leisure pool, a double gymnasium with walking track/multipurpose room and a library.





EXQUISITE LUXURY IN A NATURAL SETTING

Oakridge Meadows is a collection of luxurious single family homes and townhomes in the heart of Richmond Hill's most eloquently idyllic landscape. Located just off Leslie St. and Stouffville Side Rd., this community offers incredible access to efficient transportation routes and the superb amenities of Richmond Hill.

416.277.2680



A VIEW OF ASPIRATIONAL LIVING

One of the GTA's most successful new communities, New Seaton is a connected community close to highways 412, 401 and 407 and providing easy access to the GO Train. A balance of modern thinking in harmony with the natural landscape, here you'll find pedestrian friendly main streets and an extensive network of trails that meander through preserved and unspoiled landscapes. Enjoy living, learning, working and playing in the GTA's most desirable new neighbourhood.

647.299.3186

QUEENSVILLE
A TOWN TO CALL HOME

QUEENSVILLE



A TOWN TO CALL HOME

The community of Queensville has been master-planned to raise the standards of living. Discover a place where families can explore, learn, play and grow together in a safe and supportive environment.

905.589.0399



THE ESSERY
HERITAGE RESIDENCES
1887

TORONTO



COVETED BOUTIQUE LIVING

Steeped in history and melded with new architecture rises a bright new Aspen Ridge Community, The Essery. With a remarkable array of restaurants, bars and parkland minutes from your front door, The Essery is where Toronto truly feels like home.

647.350.1555

CROSTOWN™

TORONTO



LIVE, WORK, PLAY AND THRIVE

Toronto's largest new redevelopment with 60 acres of space to live, work, play and thrive rises at Eglinton and Don Mills. Discover Toronto's largest park system and exciting new community centre, and stay connected with the new Eglinton Crosstown LRT – just steps from your front door. Five buildings have already launched, with a new mid-rise building and townhomes coming fall 2023.

Crosstown Presentation Centre
844 Don Mills Rd., North York
437.881.3527

PAST HIGHRISE COMMUNITIES



Crowning the top of midtown Toronto, a silent revolution is taking place. An elevated living experience inspired by the past, transforming the future. Featuring elegant interiors and a lifestyle reserved for those who appreciate having the world at their doorstep.

Completed 2021



STUDIO

It's Richmond. Richmond & Duncan. Steps from the Shangri-La in the heart of Toronto. These two towers, with a common podium, OCAD gallery and townhomes at their base, transformed Richmond Street and welcomed over 700 new condo owners.

Completed 2018



SEVENTY SEVEN CHARLES YORKVILLE

Picture a distinctive address on the quiet side of Yorkville proper. This singular landmark building, with impeccable customized suite interiors, makes a statement in muted opulence, spoken in the language of subtle sophistication that only a precious few will call home.

Completed 2018



southbarrie

A NEW COMMUNITY WITH HEART

Welcome to South Barrie, a meticulously detailed master-planned community poised to reshape one of Ontario's most dynamic cities. Playing a vital role in this new community with heart, Aspen Ridge presents a collection of contemporary single family homes and townhomes, in a range of sizes and layouts to suit your lifestyle. South Barrie promises new schools, parks, shopping, easy connectivity, employment opportunities and more. Join thousands of families, neighbours and friends in this sparkling community, and celebrate life's beautiful moments every day.

Luxury Detached Singles

32', 38', 45', AND 50' SINGLE FAMILY HOMES

Whether you're raising a family, settling into retirement, or looking for a new work-from-home base, you'll appreciate the wide range of choices in Aspen Ridge single family homes. Every detail has been considerately planned around your need for wellness, connection, space, and tranquility.



38' STELLA Elev. B



50' ECHOS Elev. A



21' TOWNHOME Elev. A

Carefree Townhome Living

21' TOWNHOMES

Designed as the perfect starter homes for couples just beginning their life together, or for empty nesters downsizing, the townhome collection equates with adaptability and space efficiency. Each home offers sleek modern design and a host of stylish features and finishes to elevate the everyday.

Register at [aspenridgehomes.com](https://www.aspenridgehomes.com) to keep up to date on townhome releases and what's coming soon.



21' HAWTHRON Elev. C

Lake Simcoe's Signature City



BARRIE'S CHARM

One of the fastest growing cities in Ontario, Barrie is attracting more new residents every year. This modern centre of retail, business, education, and leisure grew by 8% from 2016 to 2021, with the population now sitting at more than 212,000*. New residents are delighted to discover how Barrie fulfills big-city needs while remaining down to Earth and friendly. In Barrie, there's something fun and interesting for every member of your family, all year round.



Artist's concept of Barrie Downtown.

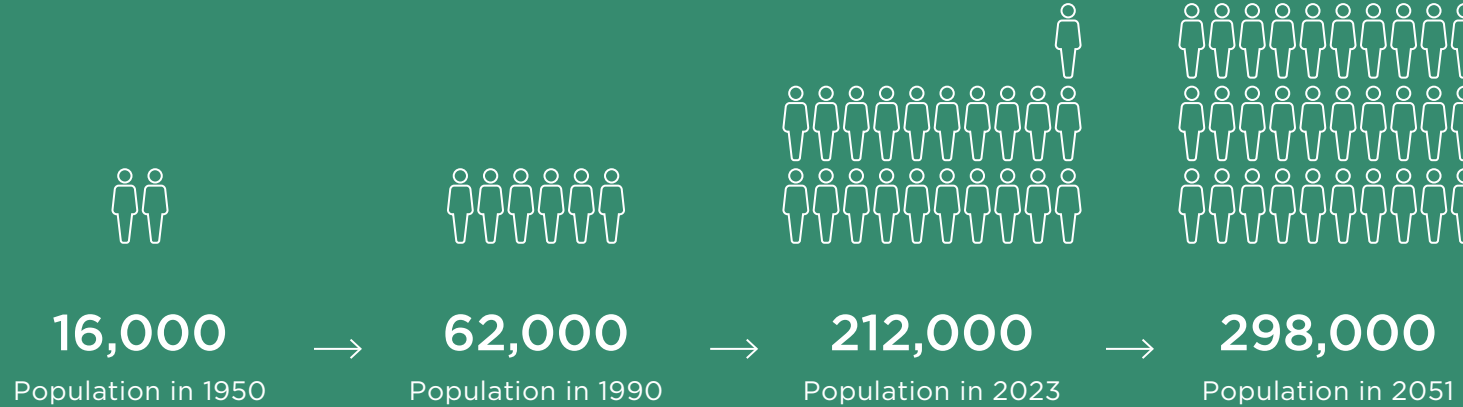
A Unified City

SHAPING THE FUTURE OF BARRIE

In April, 2023, the City of Barrie approved its new official Plan that guides how the city will grow and flourish up to 2051. The Plan looks forward to Barrie being a more vibrant and attractive medium-sized city, with more parkland, better transit connectivity, more high-density housing for all income levels, more employment opportunities, and well-preserved heritage buildings. Providing access to unparalleled recreation for healthy living, Barrie will be better linked to a premier waterfront, and will focus on preservation of the natural heritage and environment. Over the years, the city will become a more sustainable and resilient community for a diverse population.

POPULATION GROWTH IN BARRIE

Source: BuildingBarrie.ca



Aerial view of expanding Barrie.



Family-friendly Barrie

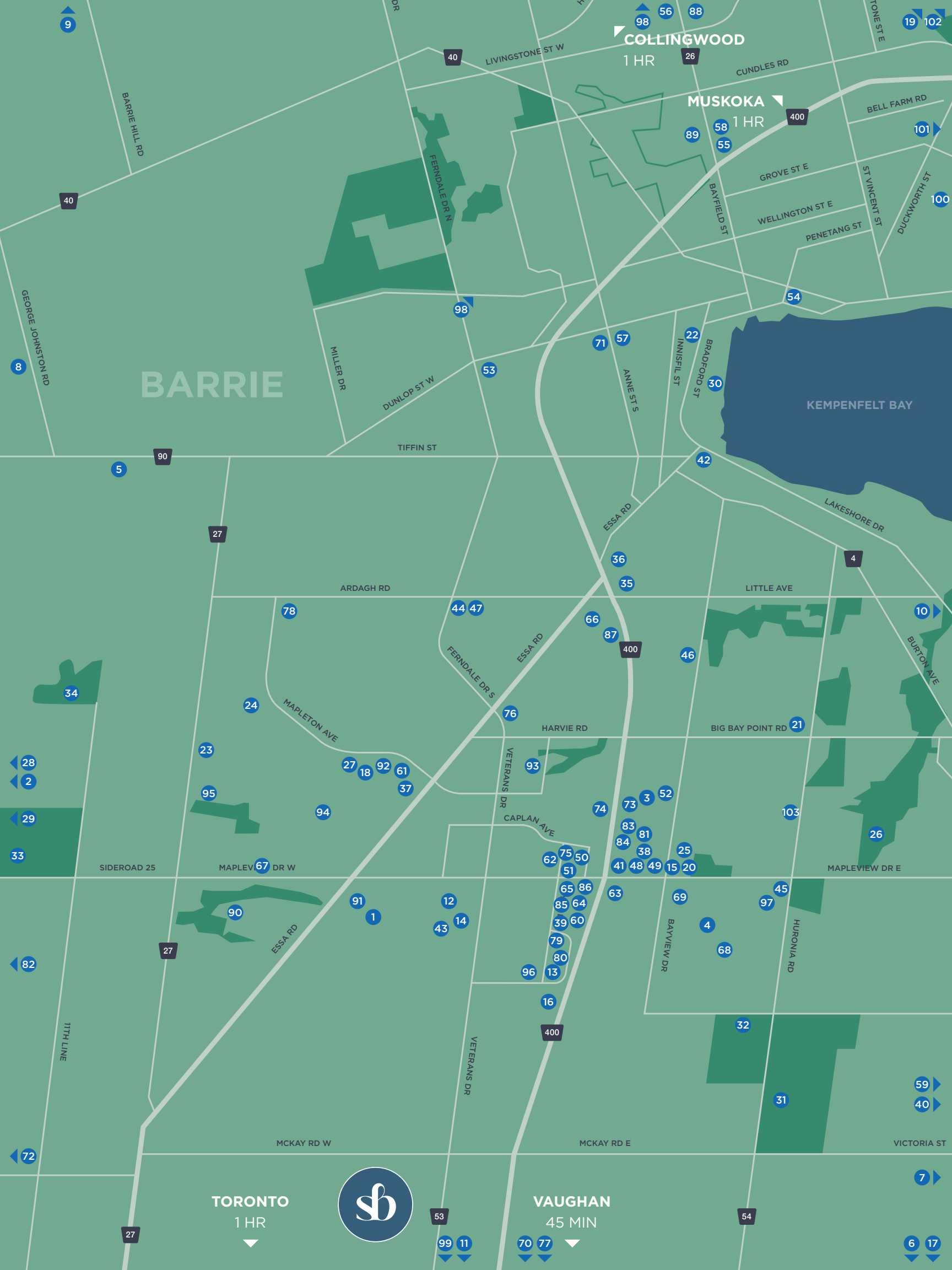
Barrie is one of the most family-friendly cities in Canada. As Barrie Today reports, Yore Oyster, a personal finance and investment company, in 2023 ranked Barrie highly as a great city for raising a family. The company rated Barrie as the #9 city in Canada, higher than Ontario cities such as Toronto, Kitchener, and London.

To come up with its rankings, the company took into consideration factors such as education, cost of living, and crime rate. In Barrie, the waterfront, the conservation areas with forests and hiking trails, the vast number of outdoor activities, the libraries, daycares, festivals and events all came into play to propel Barrie into the Top Ten in Canada.

Discover for yourself why Barrie has garnered this impressive ranking!



Celebrate Life's Beautiful Moments



RECREATION & AMUSEMENTS

1. Funvilla Indoor Playground
2. Barrie Paintball
3. X-Play Trampoline Amusement Park
4. Kings and Castles Indoor Playground & Restaurant
5. Delta Force Paintball
6. Sunset Speedway
7. Innisfil Skate Park
8. Historic Fort Willow
9. Snow Valley Ski Resort
10. Friday Harbour Resort
11. Gateway Casinos Innisfil
12. Kaleidoscope Play Centre
13. Aquastream Swim School
14. Bullseye Axe Throwing
15. Sadlon Arena
16. Galaxies Cinemas Barrie
17. YMCA
18. Peggy Hill Team Community Centre
19. Horseshoe Valley
20. Barrie Colts
21. National Training Rinks
22. Barrie Minor Hockey Association

PARKS

23. Simcoe County Forest Dyer Tract
24. Cathedral of Trees
25. Barrie Dog Off-Leash Recreation Area
26. Lovers Creek Ravine
27. Ardagh Bluffs Natural Area
28. Essa Pindex Recreational Trail
29. Tiffin Centre for Conservation
30. Centennial Park & Beach

GOLF COURSES

31. National Pines Golf Club
32. Innisbrook Golf Course
33. Tangle Creek Golf Course
34. The Wilds at Cedar Valley Golf Course

RESTAURANTS, PUBS & CAFES

35. Mandarin
36. Beertown Public House
37. Stacked Pancake & Breakfast House
38. The Canadian Brewhouse
39. The Mexican House
40. The Stone Grille Restaurant and Bar
41. The Keg
42. The Farmhouse
43. Thai Bamboo Restaurant
44. Sicilian Gourmet Pizza & Pasta
45. Qing's Cuisine
46. Mmm Donuts Café and Bakery
47. Anikky's Kitchen
48. The Burger's Priest
49. Milestones
50. Montana's BBQ & Bar
51. Mucho Burrito Fresh Mexican Grill
52. The Rec Room
53. Cottage Canoe Restaurant
54. Lazy Tulip Cafe
55. Flashback Diner
56. Kelseys Original Roadhouse
57. Popeyes Louisiana
58. Starbucks

GROCERIES

59. Foodland Stroud
60. Sobeys
61. Food Basics
62. Farm Boy
63. Costco Wholesale
64. Walmart Supercentre
65. Petsmart
66. Zehrs

SHOPPING

67. Power Up Gaming
68. Fun Zone Comics and Collectibles

69. RONA
70. The 400 Market
71. Kawartha Dairy Barrie
72. Freedom Canoe & Kayak
73. Cabela's
74. Home Depot
75. LCBO
76. Shoppers Drug Mart
77. Herbert's Boots & Western Wear
78. Pink Prosecco Boutique
79. Plato's Closet
80. Olive Oil Co Inc.
81. Park Place Shopping Mall
82. The Radical Rooster Barn Store
83. Winners
84. HomeSense
85. Smartcentre
86. Indigo
87. MEC Barrie
88. Georgian Mall
89. Bayfield Mall

SCHOOLS

90. St. Nicholas Catholic School
91. Romeo-Dallaire High School
92. Holly Meadows Elementary School
93. Trillium Woods Elementary School
94. St. Bernadette Elementary School
95. Bear Creek Secondary School
96. Urban Village Academy
97. Simcoe Alternative Secondary School
98. Barrie Montessori & Elementary Private School
99. Country Day School
100. Sevenoaks Academy
101. Georgian College

MEDICAL SERVICES

102. Royal Victoria Regional Health Centre
103. Huronia Urgent Care Clinic

Where Convenience Meets Fun

SOUTH BARRIE AMENITIES

A vital part of a flourishing, growing city, South Barrie offers a wealth of choice for every moment of your life. From an array of restaurants, retail outlets, and shopping malls, to places to play indoors and out, and green spaces to renew and reinvigorate, this booming area gives you the luxury of infinite possibilities every day.



Commuter-friendly Connections

TRANSIT & HIGHWAYS

South Barrie is spearheading growth and infrastructure improvement in this prime area, with increasingly easy commutes on the horizon. Located only a two-minute drive from Highway 400, the community will see the future addition of a new exit onto McKay Rd., making it even easier for you to get where you need to go.

Just a few minutes west of South Barrie, Highway 27 is a great alternative route south into the GTA or north as it becomes Essa Rd. and goes direct into downtown Barrie. And, with the South Barrie GO station a short distance east, you're all set for carefree commuting to your office in Toronto, your seat at the Jays game, or your prime spot at a concert.



1HR./20MINS. (RUSH HOUR)

By Highway 400 to Bloor & Yonge Toronto



20MINS.

To South Barrie GO Station



1HR./30MINS.

GO Train to Toronto



South Barrie GO Train



Highway 400

Cool to be Schooled



EDUCATION & SCHOOLS

Whatever age your children have reached, you'll find a diverse range of educational institutions in Barrie, including elementary schools, secondary schools and colleges, all intent on providing a solid education. Teachers are devoted to ensuring your child not only enjoys learning but also builds social skills, resilience, and character.

PUBLIC SCHOOLS

St. Nicholas Catholic School
100 Lougheed Rd.

Romeo-Dallaire High School
736 Essa Rd.

Holly Meadows Elementary School
151 Mapleton Ave.

Trillium Woods Elementary School
20 Elmbrook Dr.

St. Bernadette Elementary School
101 Marsellus Dr.

Bear Creek Secondary School
100 Red Oak Dr.

PRIVATE SCHOOLS

Urban Village Academy
576 Byrne Dr.

Simcoe Alternative Secondary School
630 Huronia Rd.

**Barrie Montessori &
Elementary Private School**
580 Bayfield St

Country Day School
13415 Dufferin Street King

Sevenoaks Academy
190 Cook St

POST SECONDARY

Georgian College
1 Georgian Dr.

Four Seasons of Fun

EXCITING PLACES TO PLAY IN BARRIE

Not having fun is not an option when you live in South Barrie. The surrounding area boasts a head-spinning number of outstanding amusements and recreational opportunities, all designed to keep you and your kids in your happy place. Plus, Barrie's waterfront location means you can always zip up highway 400 and take advantage of the beaches, parks, and boat launches on the lake.



SPRING/SUMMER

CENTENNIAL BEACH PARK

61 Lakeshore Dr.

This centrally located park is a blaze of colour on hot summer days, with so many beach towels and picnic blankets spread out over the lawns and sand. Join in with other locals and host a BBQ, take a dip in the lake, play volleyball, or stroll along the waterfront trail. In spring, Centennial Park is the scene of the Barrie Waterfront Festival, featuring live music, carnival rides and food vendors.



PEGGY HILL TEAM COMMUNITY CENTRE

171 Mapleton Ave.

This large community centre has a plethora of recreation programs and activities to keep you and your kids active and engaged 365 days a year. Outside, there's a playground, soccer fields, and basketball courts. Inside, there's a 25-metre leisure pool, toddler pool, two arenas that seat 350 people each, a fitness centre and aerobics room.



INNISFIL BEACH PARK

676 Innisfil Beach Rd.

Head east along highway 21 and you'll arrive at this lovely park on the water, offering swims in the crystal clear water, spacious lawns great for picnicking under big trees, and a playground for the kids. A relaxing spot that's less busy than other area beaches, this tranquil park could become your favourite summertime retreat.



SPLASHON WIBIT WATER PARK

55 Lakeshore Dr.

Open over the warm summer months on the waterfront, this giant kids' floating playground that's the largest of its kind in Canada is a great way to cool off and have fun. It's like a big obstacle race where kids from 5 years and older run, jump, splash and play.



FALL/WINTER

FUNVILLA INDOOR PLAYGROUND

312 King St. | 705.252.5454

What a great place to take your little ones for a play blowout - Funvilla features bouncy castles, wall climbing, a ninja course, arcade games and more. Funvilla is an ideal world for active play and social interaction.



TIFFIN CONSERVATION AREA

Bayfield St. & Dunlop St. W.

Offering wonderful hikes on crisp fall days and cross-country skiing and snowshoeing through the winter, this 300-acre green space features 11 km. of loop trails that take you through wetlands, forests, open meadows and ancient lake beds. You can even bring your dog on a leash. And in spring, there's a sugar bush with sweet treats to reward you after your hike.



SNOW VALLEY SKI RESORT

2632 Vespra Valley Rd. | 705.721-7669

Just a short drive from South Barrie, this ski resort capitalizes on the great amount of snow that falls in the area during winter. Bring the family for skiing, snowboarding, tubing and snowshoeing, and find out why Snow Valley was named Best Ontario Hill for Kids by Ski Canada Magazine.



When the Puck Drops

TOP HOCKEY SPOTS IN BARRIE

Barrie is a big hockey city, with a huge variety of options to get out on the ice and play - whatever your age and skill level. And since hockey is so exciting to watch, you can always cheer on the home teams.

LEAGUES & RECREATIONAL

BARRIE MINOR HOCKEY LEAGUE ASSOCIATION

This league is affiliated with the Barrie Colts OHL organization and gives kids a great learning experience playing on teams and in tournaments.

BARRIE WOMEN'S HOCKEY ASSOCIATION

This is an amazing opportunity for women to play next-level hockey on the Barrie Sharks team - and take advantage of power skating and hockey skill lessons.

BARRIE MEN'S HOCKEY LEAGUE

Men who live to play hockey can join this league for regular game play throughout the winter or summer season.

RENTING INDOOR ICE

To organize hockey games with friends and family, you can rent the ice at several Barrie arenas, including Allandale Recreation Centre Arena, Barrie Molson Centre Arena, East Bayfield Community Centre Arena, and Eastview Arena.

OUTDOOR SHINNY

Once the winter hits and the temperature drops, a number of outdoor rinks in Barrie offer designated times for shinny. Plus, the Will Dwyer Park Community Ice Rink is a shinny-only venue.



THE BARRIE COLTS

Barrie's fantastic OHA team plays at the Sadlon arena and made the Conference Semi-Finals last year. Join 3,500 other fans and cheer on the Colts as they compete to reach the number one spot. Over the summer, the Colts offer hockey camp for kids - giving them a chance to learn winning technique.



Barrie Waterfront Festival

BARRIE FESTIVALS

BARRIE WATERFRONT FESTIVAL

Held in May every year at Centennial Park, this festival features musical acts, food trucks, vendors, a beer garden, midway and more.

MAGIC OF LIGHTS

Get into the car with your family and head to this unique and dazzling drive-through holiday lights experience.

DRYSDALE'S CHRISTMAS & HOLIDAY VILLAGE

A country farm featuring live carolling, holiday music, magic show, bonfire, train rides, and horse-drawn wagon rides.

BARRIE SANTA PARADE

Taking place every November, this parade gives kids an opportunity to see Santa as he rides his sled through the downtown streets.

BARRIE'S DIWALI BASH

Everyone is invited to the festivities, which include Indian dinner, talent shows, performances, photography, a fashion show, kids corner, vendors, and a dance party.

FAMILY FRIGHT FEST

Bring your little witches and ghosts to this Hallowe'en festival that offers magic shows, a haunted house, costumed characters, games and crafts and a haunted house.

BARRIE WINTERFEST

Winter gets a high profile at this festival with ice and snow sculptures, lumberjack shows, polar bear dip, family entertainment, drop-in activities, and skating.

DRAGONBOAT FESTIVAL

This event gets teams of co-workers, friends and family together to compete on the water, while raising money for charity.

NOELLA FESTIVAL

This six-week-long festival in downtown Barrie includes light displays, a tree-lighting celebration, live music, and a holiday market.

BOOTS & HEARTS

Canada's largest country music and camping event takes place at Burl's Creek and features some top-name stars — sometimes even Shania Twain.

Get Your Festival On!

YEAR-ROUND FUN FOR ALL

All year round, Barrie hosts a spectacular variety of festivals that celebrate everything from music, to food, to arts and culture. These day-long or multi-day events bring everyone together for the sheer enjoyment of being part of something big and fun. Here's a quick guide to some of the top festivals held in Barrie every year.



Family Fright Fest



Drysdale's Christmas & Holiday Village



Dragonboat Festival

PARKS & GREEN SPACES

One thing that makes Barrie such an amazing place to live is its vast green spaces and parkland. Those who seek solace in the green embrace of nature, who love to go for a trail run, dog walkers and wanderers – everyone can find their favourite parks to escape to.

Great Green Escapes

ESSA PINDEX RECREATIONAL TRAIL

Just up Essa Rd. you'll arrive at Essa Pindex Recreational Trail, a 4-km. loop through forested woods. Surrounded on all sides by roads, this easy-to-access swathe of greenery is popular with hikers, birdwatchers and walkers of leashed dogs.

SIMCOE COUNTY FOREST DYER TRACT

Growing tall within the 80 acres of this healthy mixed forest are sugar maple and red oak, American beech, black cherry, basswood, white pine, and hemlock. This hiker's paradise encompasses the Cathedral of Trees and the West Creek Trail, and is connected to the equally magnificent Ardagh Bluffs Natural Area.



LOVER'S CREEK RAVINE

This wooded area with an endearing name can be walked through in less than an hour for a quick break from civilization – with or without your loved one. The trail is flat and the going is easy.

BARRIE DOG OFF-LEASH RECREATION AREA

Give your pooch a taste of freedom in this fenced-in park for canines and their favourite people. Dogs can run around and play with each other, and there's also a 2-km. walking trail where you can walk your furry friend.

OTHER PARKS & TRAILS

The Gables Park
250 Tollendal Mill Rd.

Sunnidale Park
265 Sunnidale Rd.

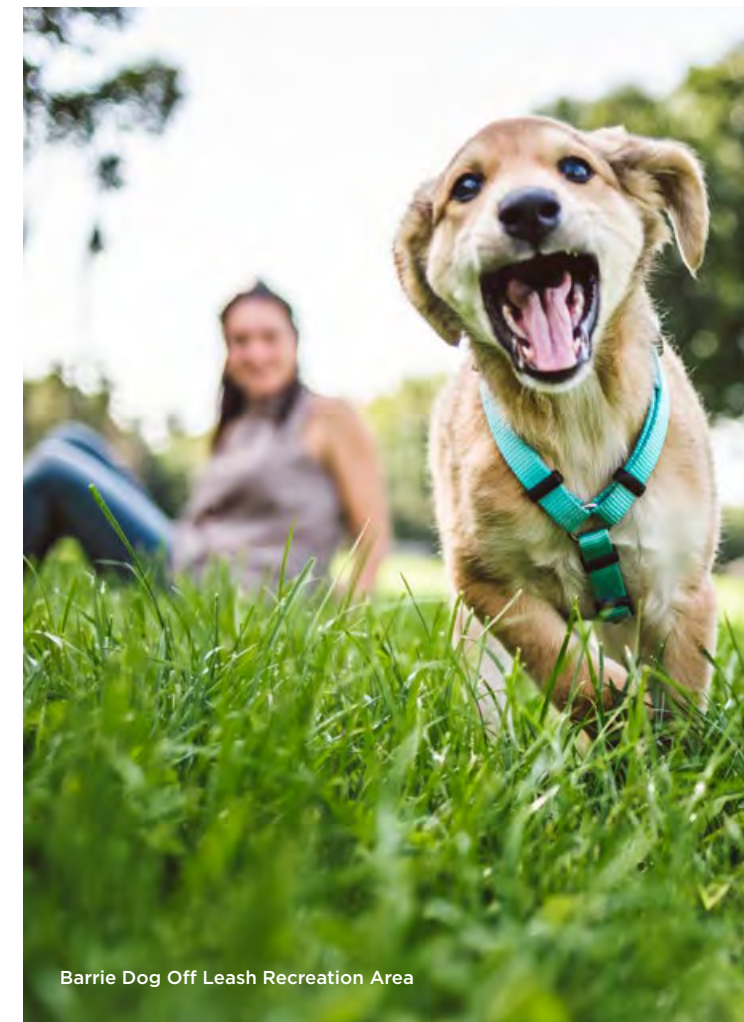
Heritage Park
5 Simcoe St.

Ardagh Bluffs
174 Mapleton Ave.

Nine Mile Portage Heritage Trail
Bayfield St. & Dunlop St. W.

West Creek Trail Loop
29-31 Farmstead Cres.

Bear Creek Wildlife Sanctuary
8633 10th Line Rr 2





Driving Ambition

GOLF COURSES

What better way to get fresh air, spend time with friends and family, and indulge in a little friendly competition than testing your skills in a game of golf? Barrie is one of the best places in southern Ontario to get your golf game on, and quite close to South Barrie you'll find your new favourite places to play.

NATIONAL PINES GOLF CLUB

8165 10 Sideroad | 705.431.7000

This private club only minutes from South Barrie opened in 1992 to much acclaim, partly because of its design by Thomas McBroom. You'll have to stay focused on the ball and avoid being distracted by the course's undulating greens and forest-fringed fairways. Play is challenging but the reward is the great variety of food and beverages available in the Clubhouse.

TANGLE CREEK GOLF COURSE

4730 Side Rd 25 | 705.720.2150

A public club, Tangle Creek is nestled in scenic, rolling hills, and has been ranked as one of Ontario's finest courses, and Barrie's #1 facility. The course boasts bent grass greens and windswept fairways, along with impeccable food and beverage service, and a 7-acre practice driving range.

INNISBROOK GOLF COURSE

211 Lockhart Rd | 705.721.9210

Located amidst green fields and wooded glades, and just east of South Barrie, this club offers a real bounty of options for play. Join as a member, play casually under Public rates, or join a league. Innisbrook has a variety of Leagues to keep things competitive and social - Men's, Ladies', Couples' and more!

THE NEST AT FRIDAY HARBOUR

3800 Friday Dr, Innisfil | 705.812.8880

Designed by award-winning golf course architect Doug Carrick, The Nest offers 18 holes of tranquil beauty set along Lake Simcoe. With sculpted dips and hollows that add challenge and inspire precision, this world-class semi-private course boasts stunning varied landscapes from every vantage point.



National Pines Golf Club



Fabulous Finds

SHOPPING

As one of Ontario's biggest cities, Barrie is a centre of retail that attracts people from all over Simcoe County to shop for life's essentials. Everything you could imagine ever wanting is available in Barrie, and from South Barrie, you're only a few minutes from shopping malls featuring familiar brands, specialty stores, and big-box outlets. Awaiting exploration not far from home are a few intriguing shops as well.

Opposite page
The Radical Rooster Barn Store



Herbert's Boots & Western Wear

HERBERT'S BOOTS & WESTERN WEAR

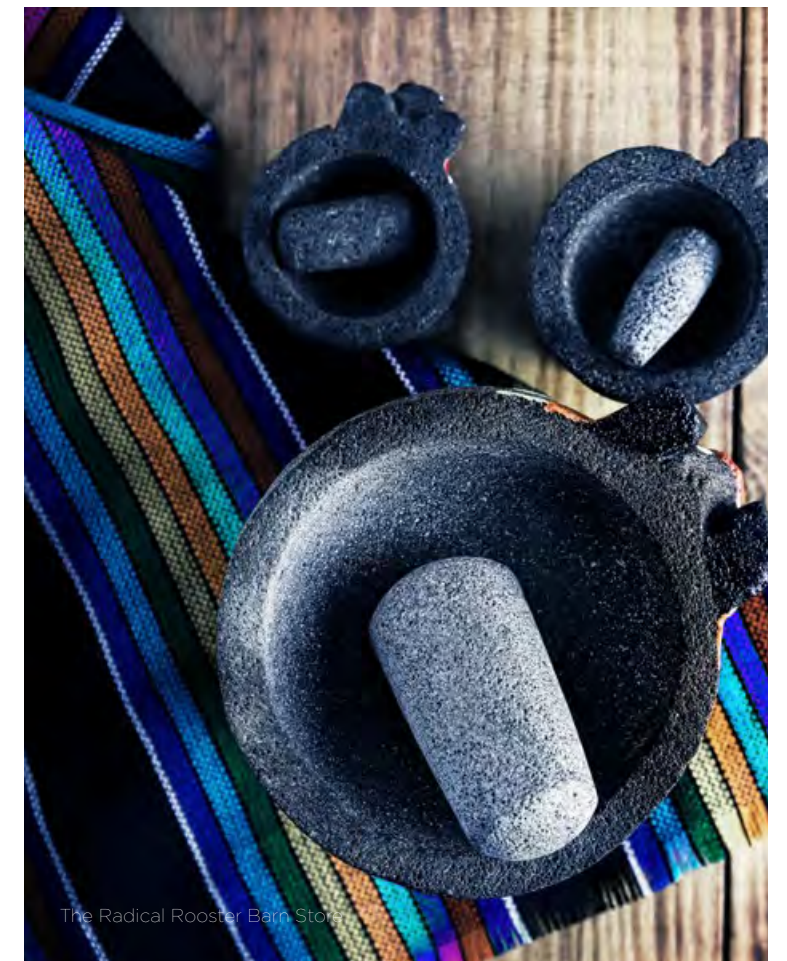
2044 Commerce Park | 705.431.2500

With 5,000 pairs of Western boots in stock, there's bound to be something that will pair stunningly with the ensemble you plan to wear to the next country & western music festival that comes to Barrie. Herbert's also has a fantastic selection of Western shirts, jeans, belts and buckles, and more.

THE RADICAL ROOSTER BARN STORE

7860 9th Line RR#3 | 705.220.9234

It's impossible to go to Mexico without being irresistibly drawn to the country's distinctive art, design, and crafts. Now you can save yourself from extra baggage fees by shopping in Barrie for Mexican décor and furnishings. Housed in a barn, this emporium of all things Mexico will charm you with colour, style, and whimsy.



The Radical Rooster Barn Store

OLIVE OIL CO. INC.

31 Commerce Park Dr. | 705.792.0300

Once you've tasted premium olive oil, you can never go back to the ordinary kind. At this shop devoted to the world's best olive oils, you can sample 75 varieties of this fresh, extra-virgin "liquid gold." Use it for dipping bread, cooking, and baking – these oils add inimitable flavour to everything.



PARK PLACE SHOPPING MALL

100 Mapleview Dr E. | 705.797.0777

Your closest-to-home shopping mall is Park Place, just up Highway 400 at Mapleview Dr. E. Its vast selection of retail shops makes it easy to decorate and furnish your home, find clothes for work, school, and sports, and update your electronics. And if you feel a drop in energy, grab a bite at one of the many eateries on site.



PINK PROSECCO BOUTIQUE

480 Mapleton Ave Unit #4 | 249.388.3170

Offering a friendly and comfortable space to browse and try on women's clothing, jewellery and accessories, this boutique epitomizes the "shop local" ideal. Owners Kristine and Kari command a loyal following of women looking for fashionable items and wearable art at reasonable prices.



Gourmand Adventure

DINING & RESTAURANTS

Barrie is a hot spot for elevated food experiences, and with its ever-increasing population diversity, you can expect an even wider variety of cuisines to appear on the food map in future. Venture out from South Barrie to sample the offerings at your local purveyors of gourmet-quality restaurant experiences.



THE MEXICAN HOUSE

12 Commerce Park Dr. | 705.725.2410
24 Maple Ave. (Downtown location) | 705.726.7774

Authentic flavours of Mexico have arrived in Barrie, pleasing the palates of everyone looking for that feeling of eyes-closed bliss upon biting into gourmet-level, chef-prepared creations. The expected Mexican food items are on the menu but so are some rarely encountered traditional appetizers and entrees: Aztec Soup, Flautas, Plata Tipico, and 3 Leches Cake.

THE FARMHOUSE

268 Bradford St. | 705.737.0522

Only a 20-minute drive, this relaxed restaurant on the waterfront features a “farm-fresh” menu. The Farmhouse makes every meal memorable, whether you decide on burgers, mac & cheese, beef tenderloin or pan-seared salmon. Fresh-juice cocktails, local beers, and coconut cream pie all add to the experience.



STACKED PANCAKE & BREAKFAST HOUSE

559 Essa Rd., Unit D6. | 705.733.1403

Let's face it: On weekend mornings it's nice to have someone else do the cooking. At Stacked, you can satisfy your craving for every type of hearty breakfast imaginable, including omelettes, eggs Benedict, pancakes, waffles, French toast, and crepes, all with your choice of decadent toppings and add-ons.



QING'S CUISINE

610 Huronia Rd., Unit #9 | 705.503.6610

The husband and wife team of Qing Ni and Lien Tran bring you the best of Thai and Szechuan cuisine, with everything made by hand from scratch, using only the freshest ingredients. Let the aromas and taste sensations convince you of why this restaurant has won so many awards, including the Consumer Choice Award of 2021.



Welcome Home

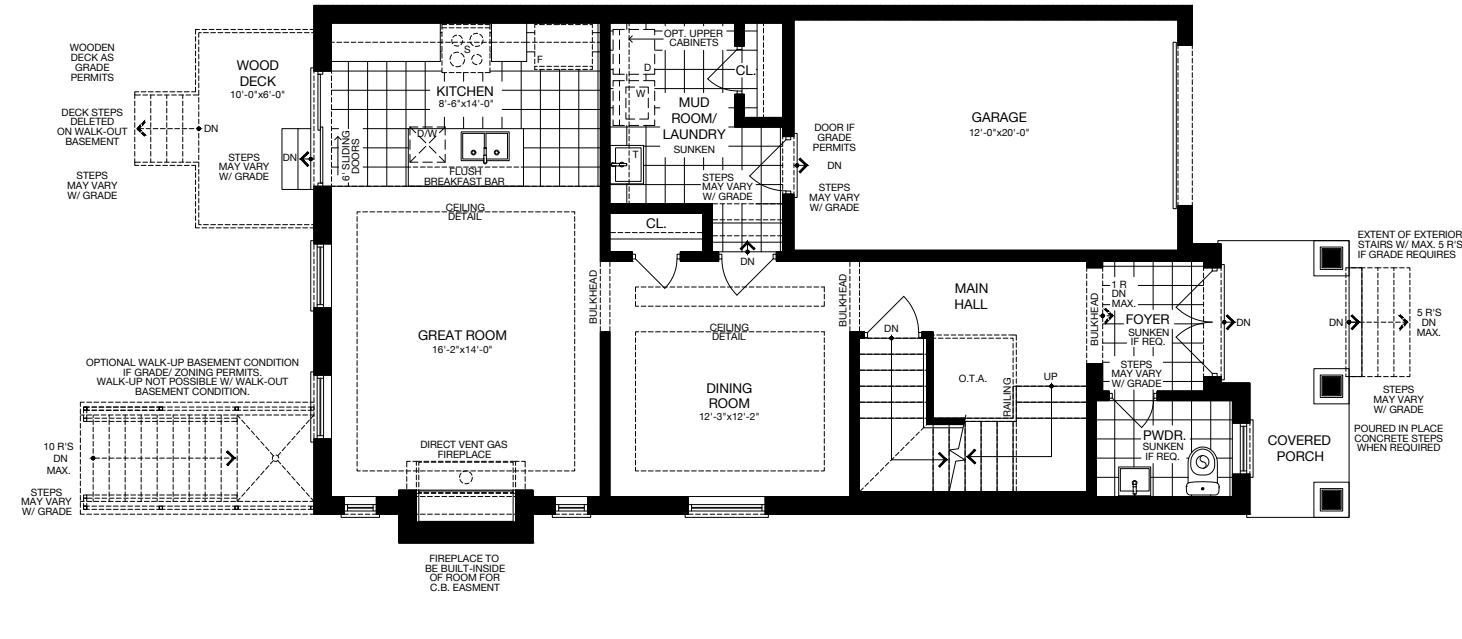
SINGLE FAMILY HOMES

32'

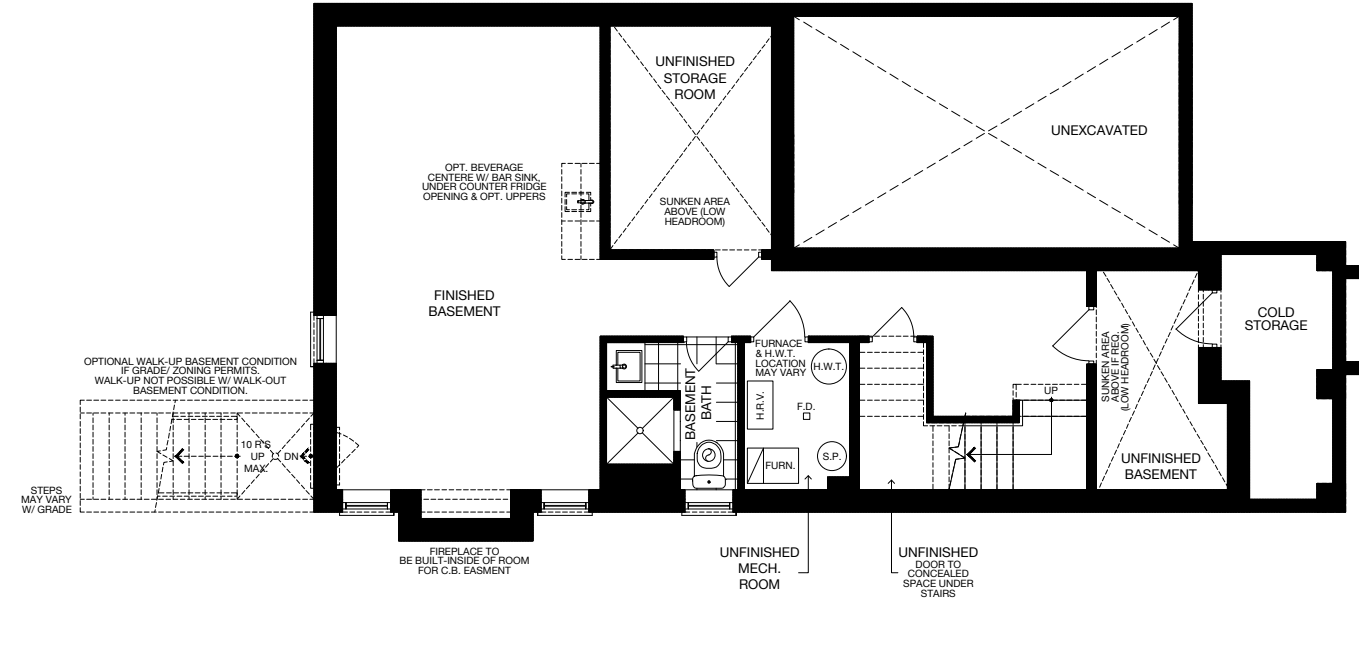
SINGLE FAMILY HOMES

The Cedars

32' SINGLE



GROUND FLOOR (ELEV. A)



OPTIONAL FINISHED BASEMENT (ELEV. A)



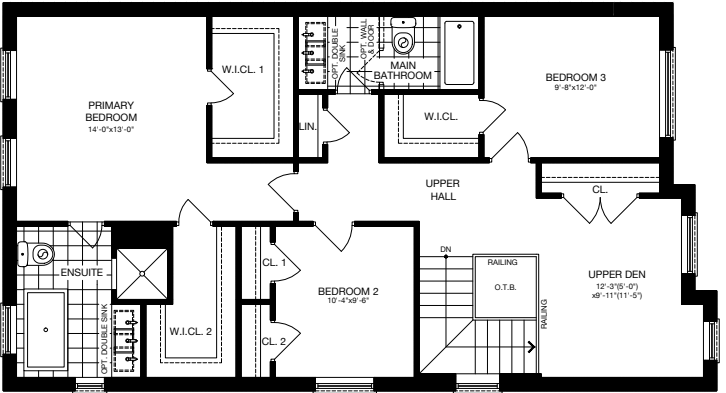
ELEVATION A 2,217 SQ.FT.



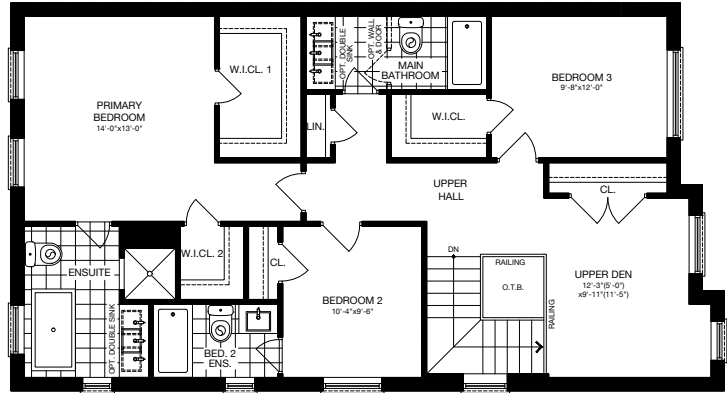
ELEVATION B 2,239 SQ.FT.



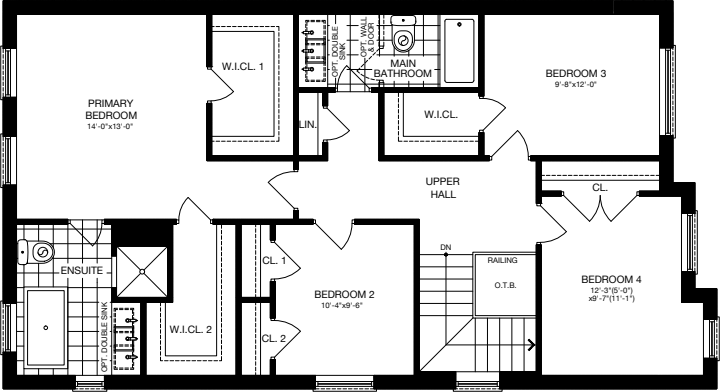
ELEVATION C 2,217 SQ.FT.



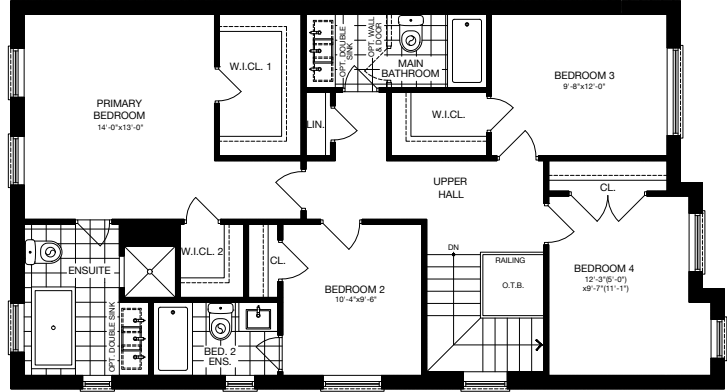
SECOND FLOOR (ELEV. A) - 3 BEDROOM



SECOND FLOOR (ELEV. A) - 3 BEDROOM + ENSUITE



SECOND FLOOR (ELEV. A) - 4 BEDROOM

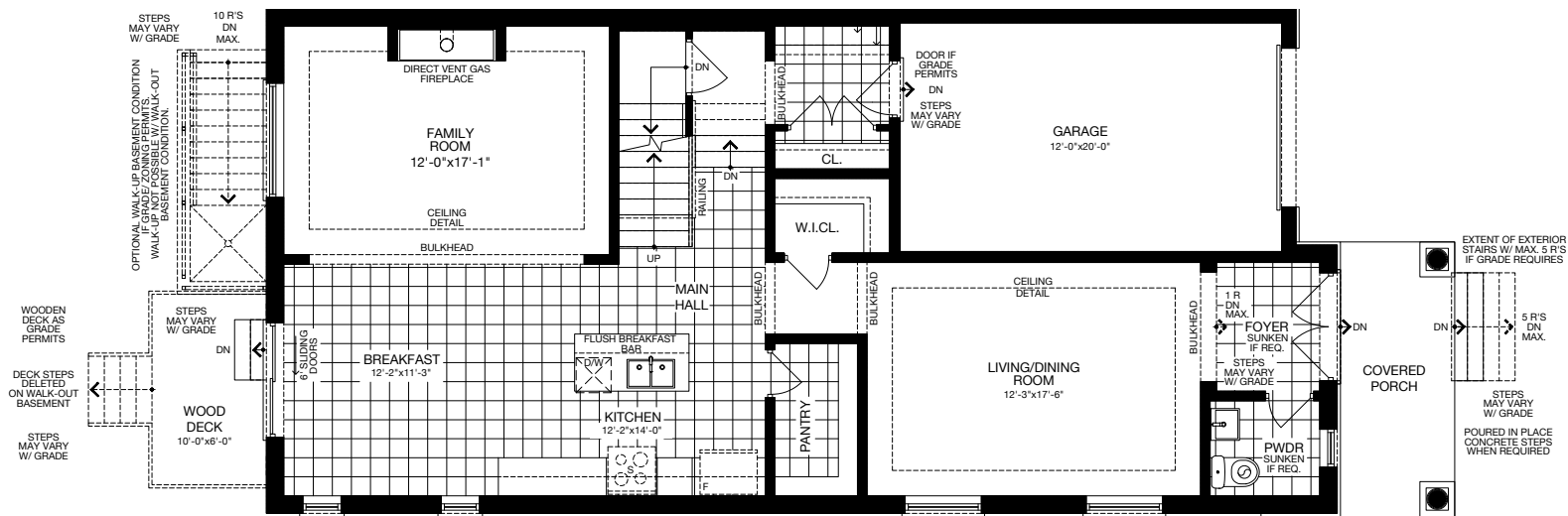


SECOND FLOOR (ELEV. A) - 4 BEDROOM + ENSUITE

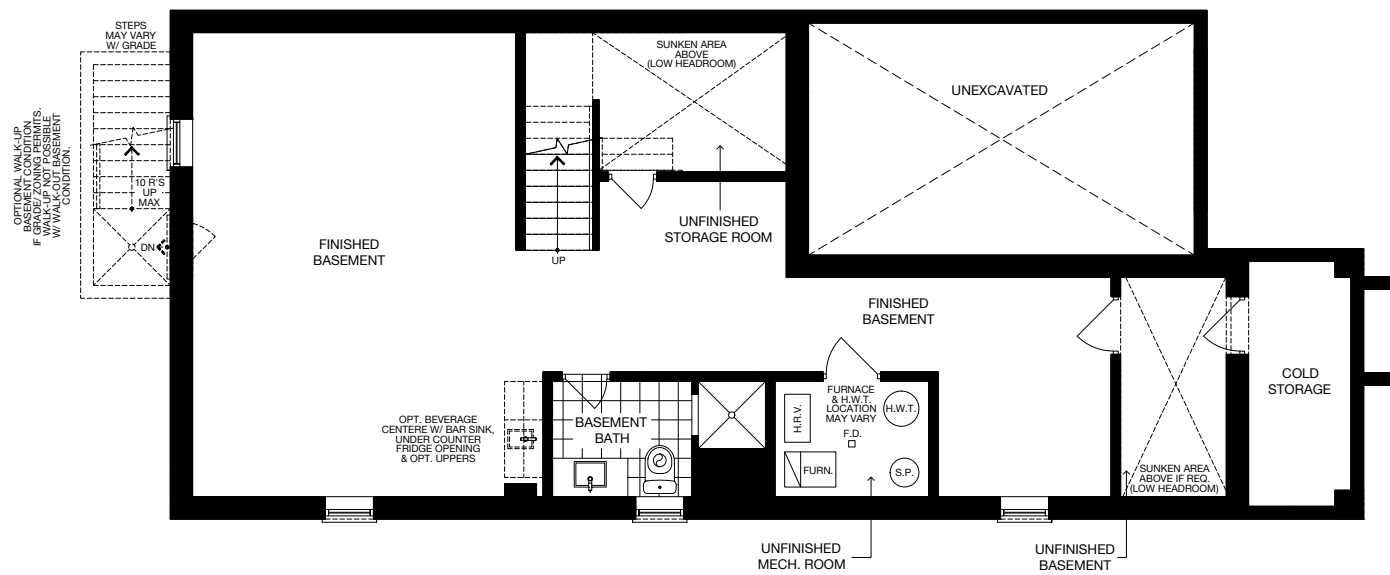
Specifications may change without notice. E.&O.E. All illustrations are artist's impressions. © Aspen Ridge. All Rights Reserved. November 2023.

The Fresco

32' SINGLE



GROUND FLOOR (ELEV. A)



OPTIONAL FINISHED BASEMENT (ELEV. A)



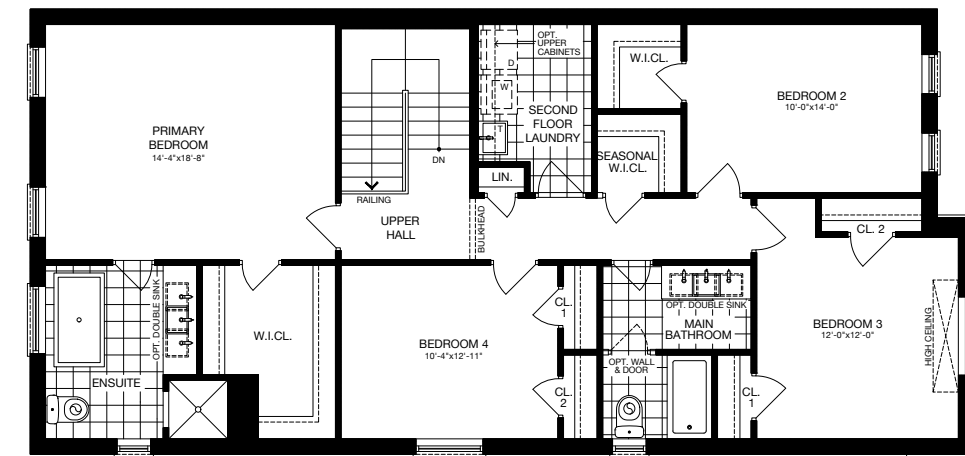
ELEVATION A 2,659 SQ.FT.



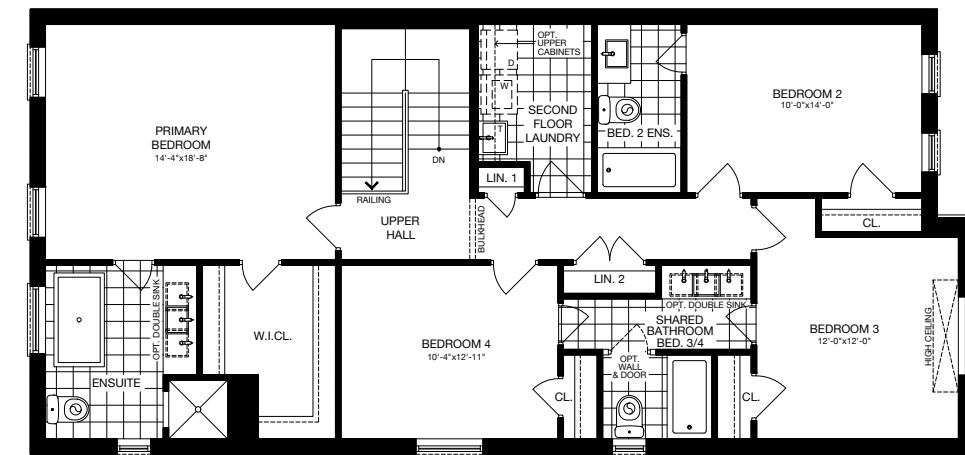
ELEVATION B 2,672 SQ.FT.



ELEVATION C 2,659 SQ.FT.



SECOND FLOOR (ELEV. A) - 4 BEDROOM

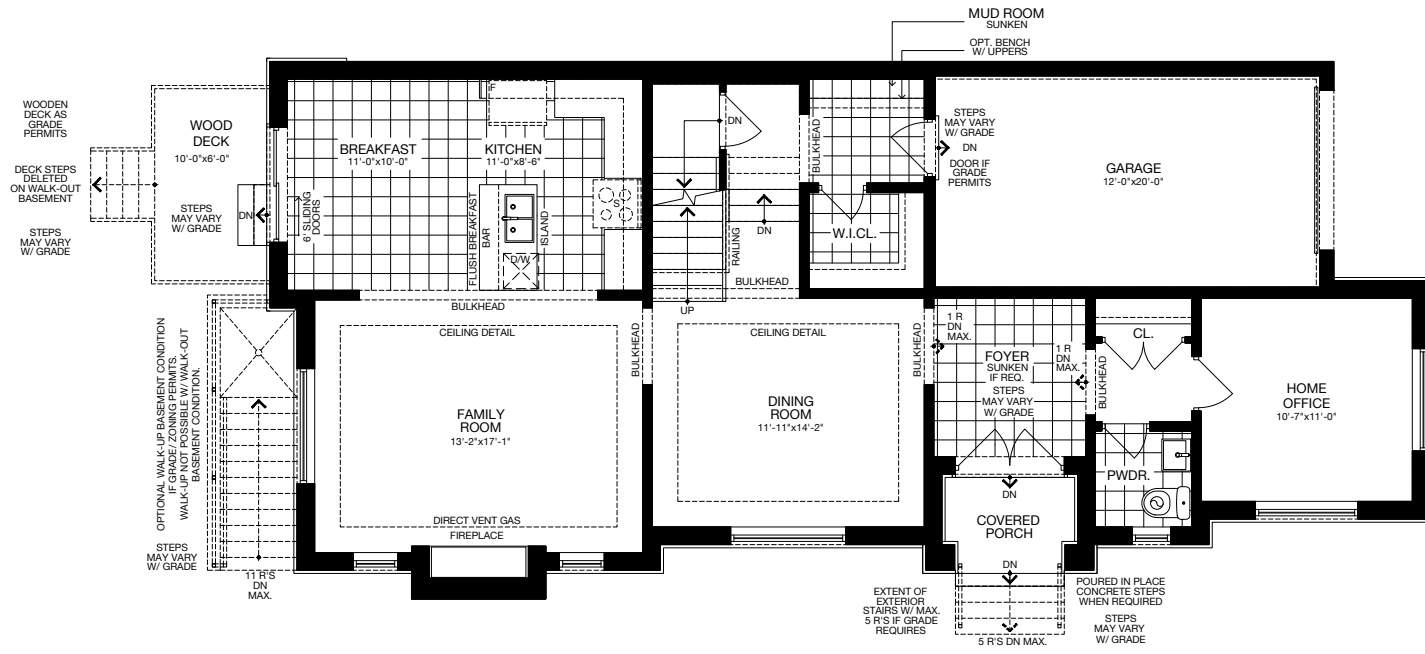


SECOND FLOOR (ELEV. A) - 4 BEDROOM + ENSUITE

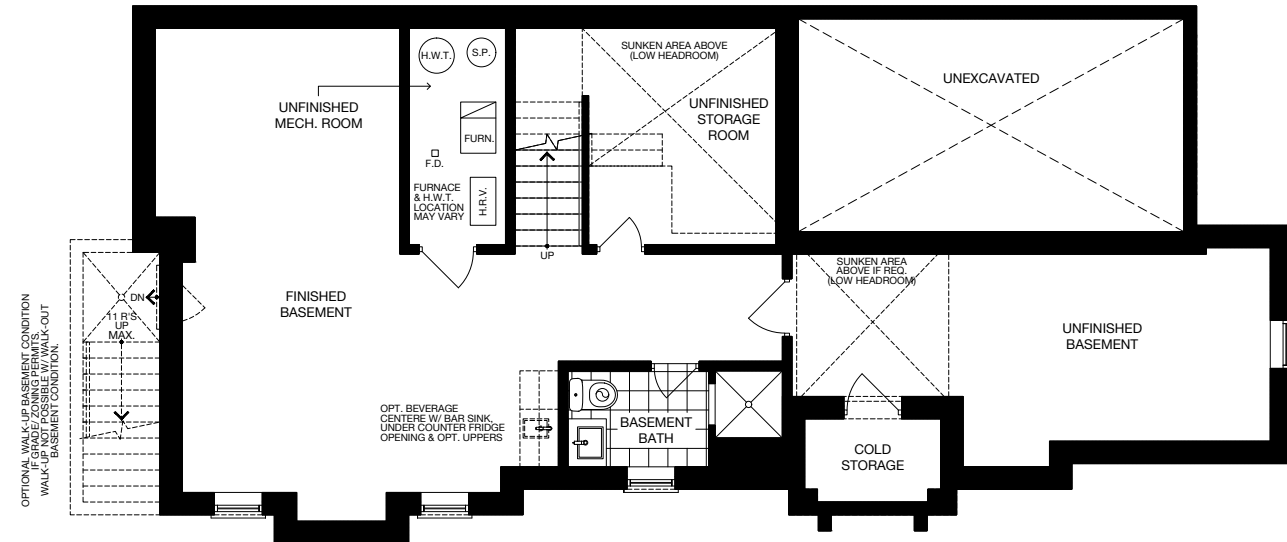
Specifications may change without notice. E.&O.E. All illustrations are artist's impressions. © Aspen Ridge. All Rights Reserved. November 2023.

The Seacrest

32' SINGLE



GROUND FLOOR (ELEV. A)



OPTIONAL FINISHED BASEMENT (ELEV. A)



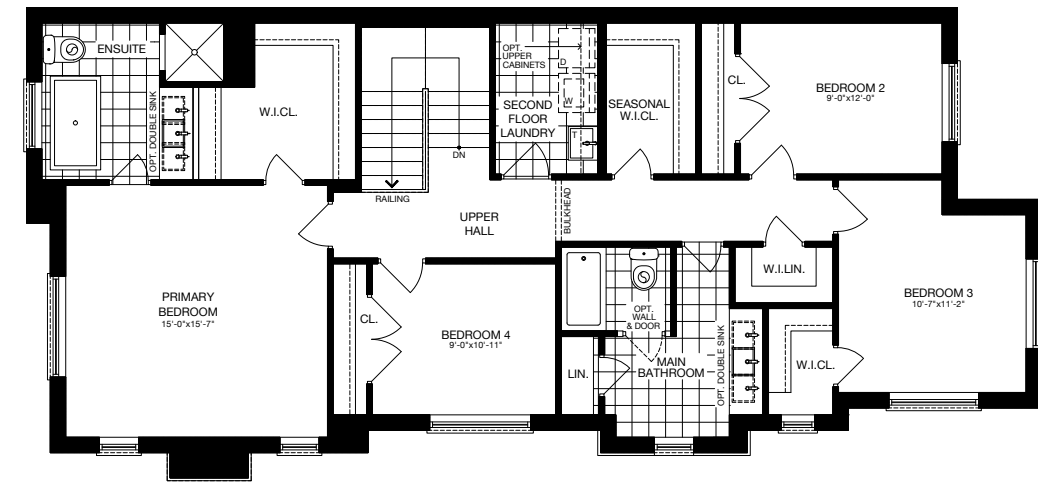
ELEVATION A 2,671 SQ.FT.



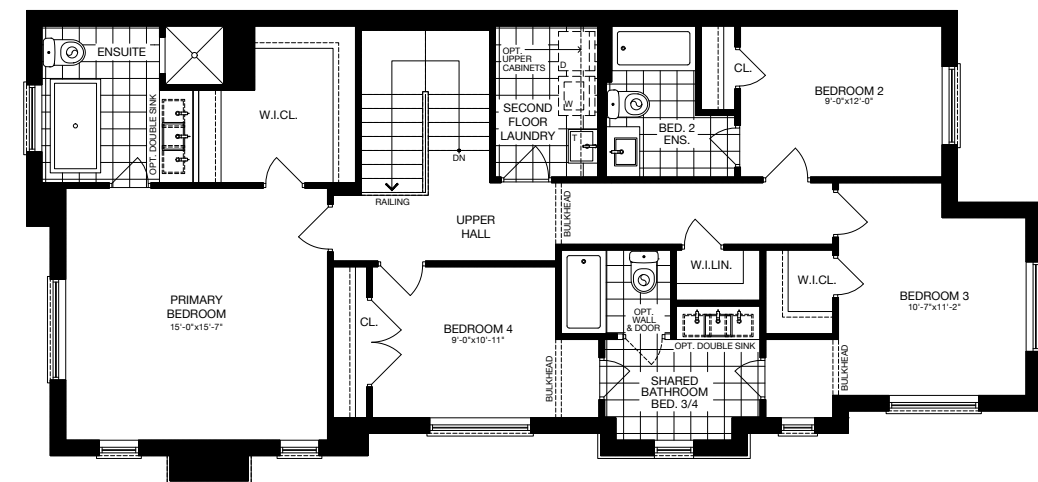
ELEVATION B 2,671 SQ.FT.



ELEVATION C 2,675 SQ.FT.



SECOND FLOOR (ELEV. A) - 4 BEDROOM



SECOND FLOOR (ELEV. A) - 4 BEDROOM + ENSUITE

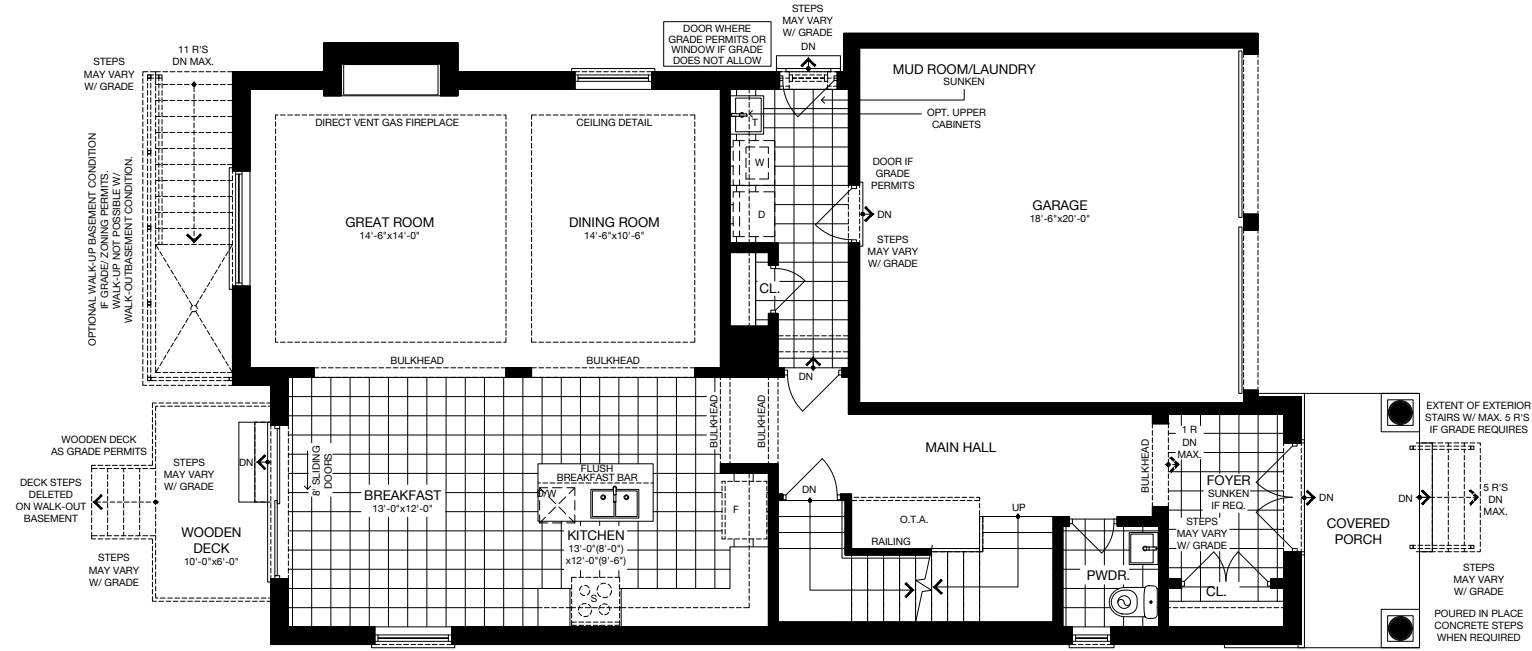
Specifications may change without notice. E.&O.E. All illustrations are artist's impressions. © Aspen Ridge. All Rights Reserved. November 2023.

38'

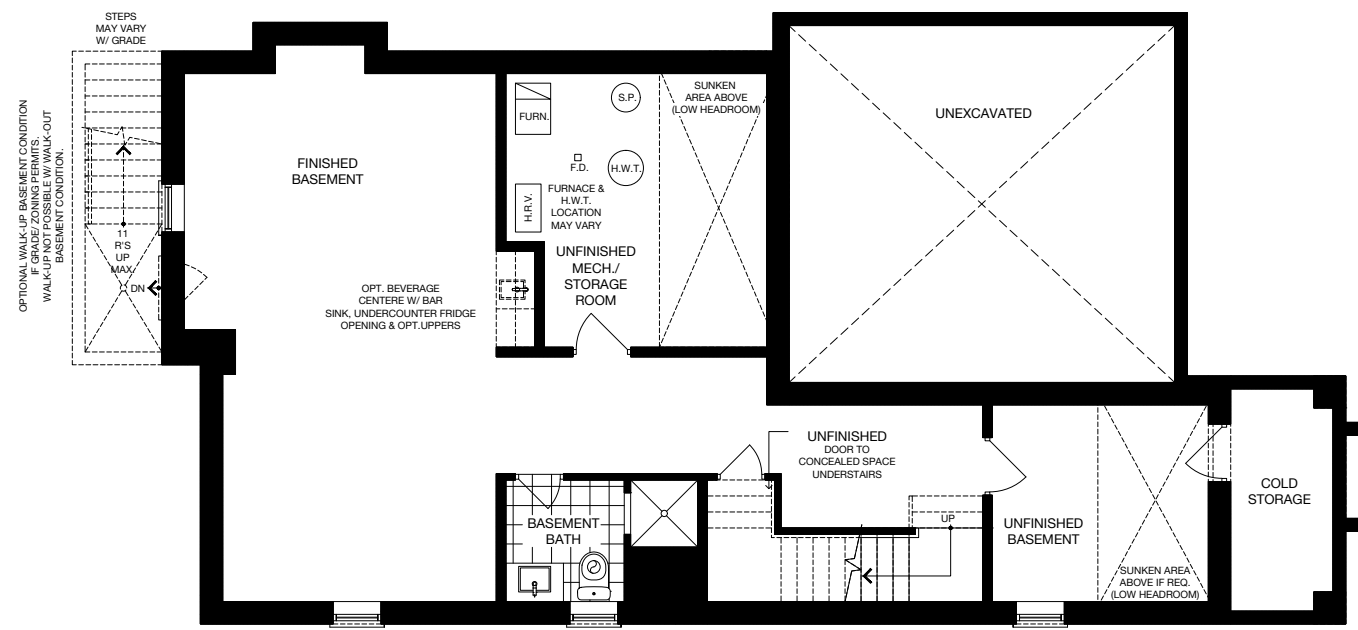
SINGLE FAMILY HOMES

The Anchors

38' SINGLE



GROUND FLOOR (ELEV. A)



OPTIONAL FINISHED BASEMENT (ELEV. A)



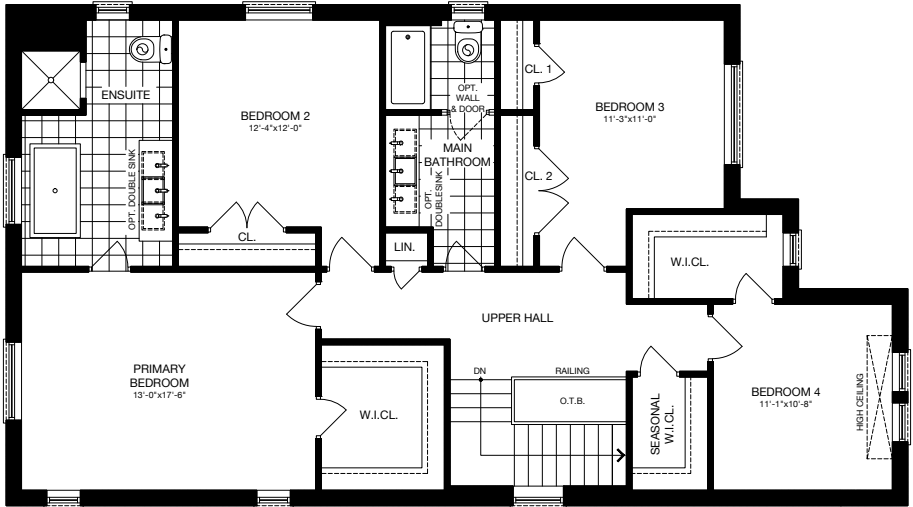
ELEVATION A 2,682 SQ.FT.



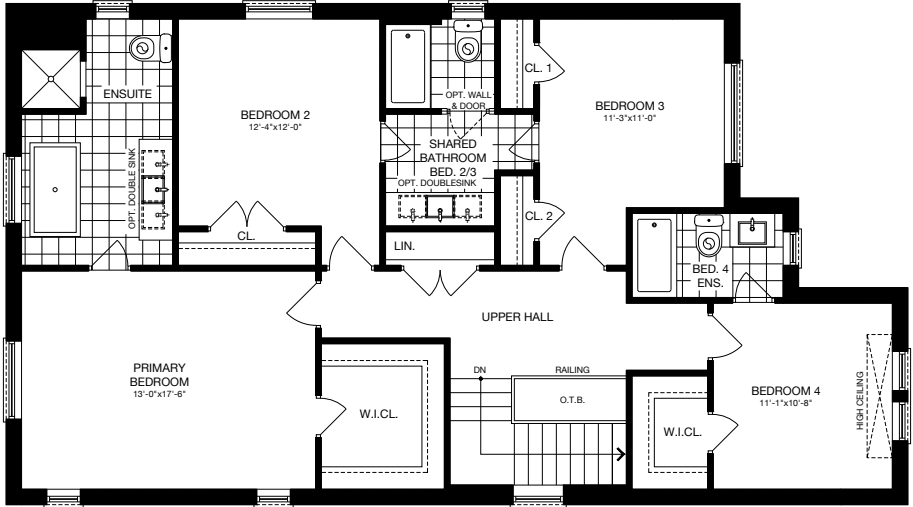
ELEVATION B 2,682 SQ.FT.



ELEVATION C 2,682 SQ.FT.



SECOND FLOOR (ELEV. A) - 4 BEDROOM

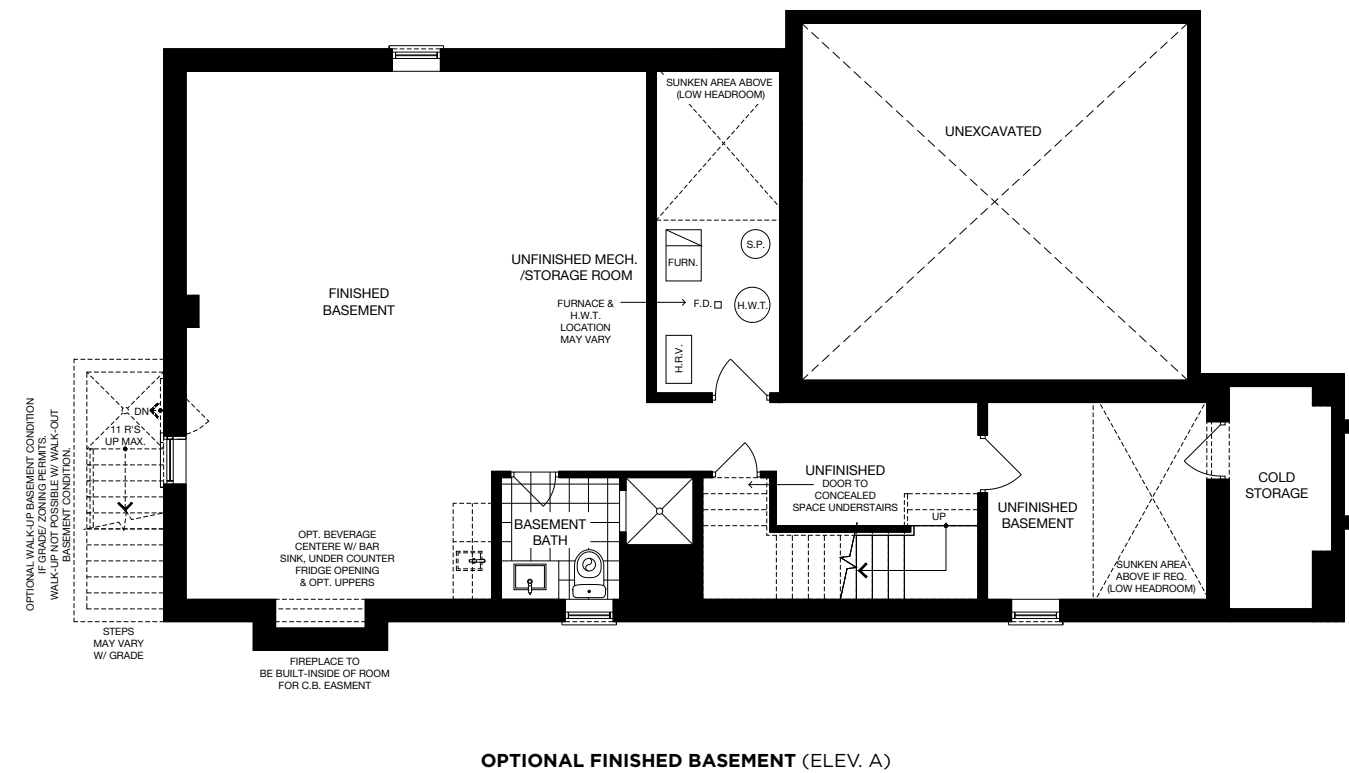
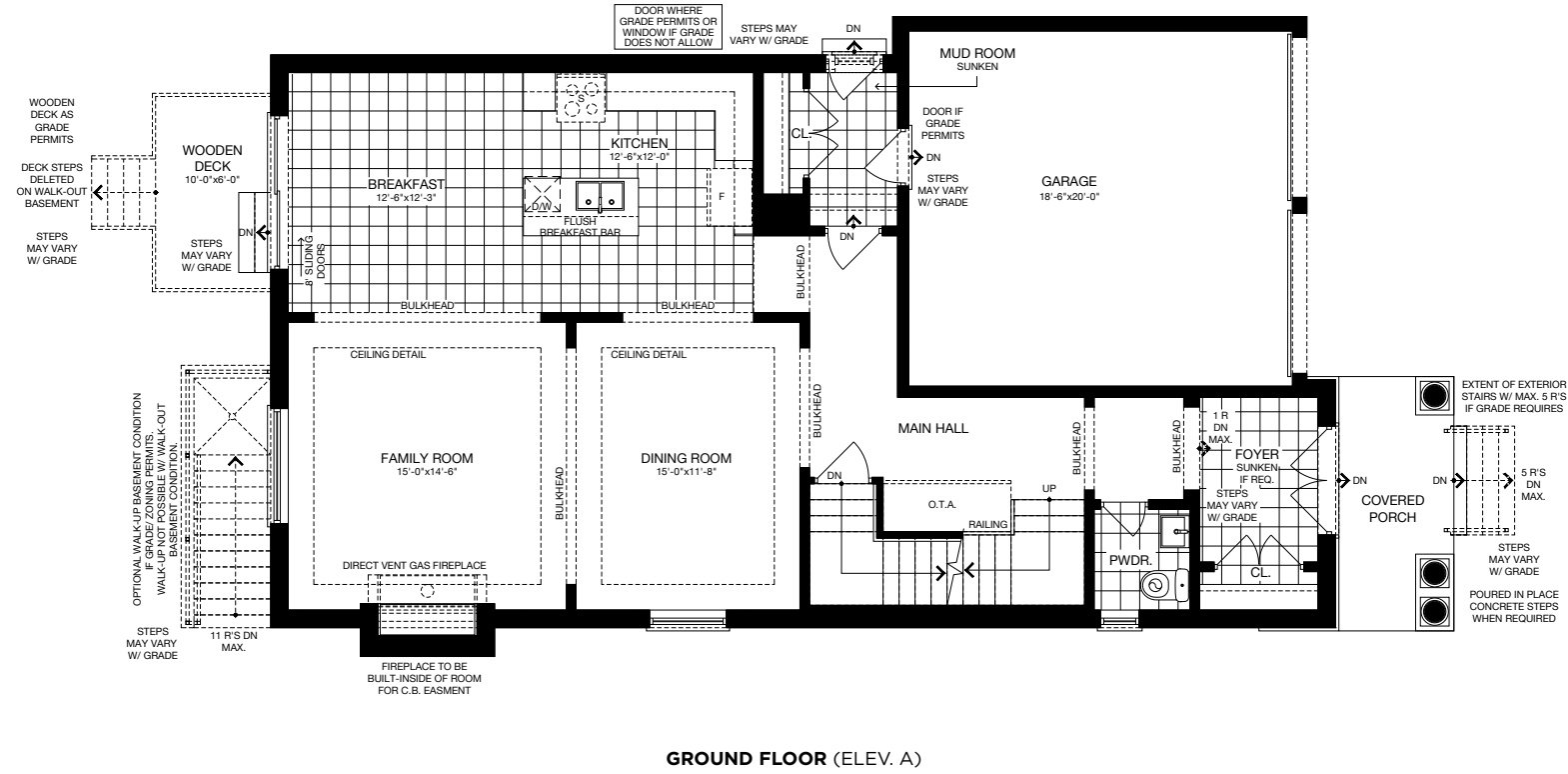


SECOND FLOOR (ELEV. A) - 4 BEDROOM + ENSUITE

Specifications may change without notice. E.&O.E. All illustrations are artist's impressions. © Aspen Ridge. All Rights Reserved. November 2023.

The Hillside

38' SINGLE



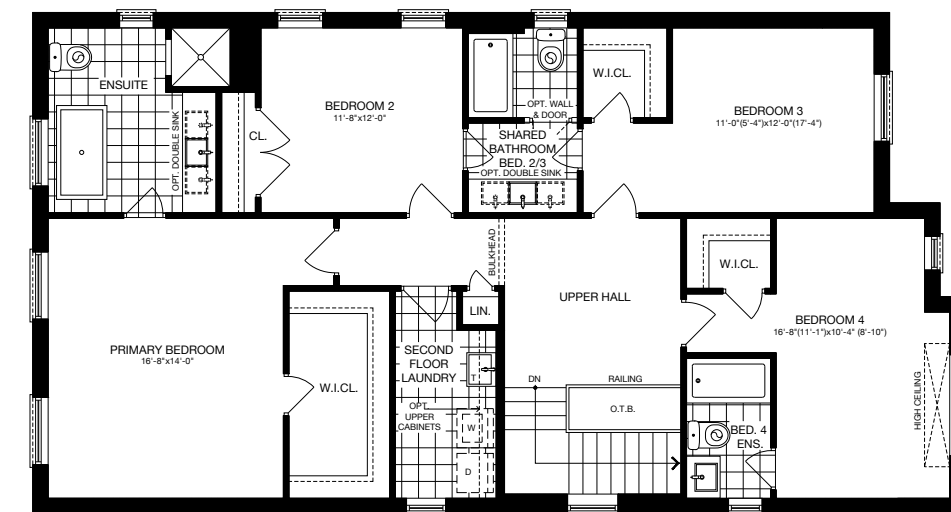
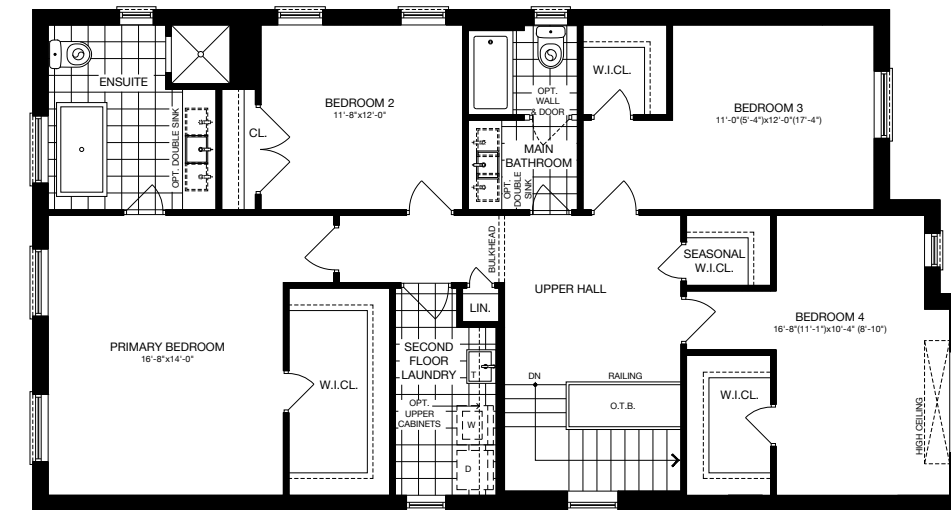
ELEVATION A 2,862 SQ.FT.



ELEVATION B 2,862 SQ.FT.



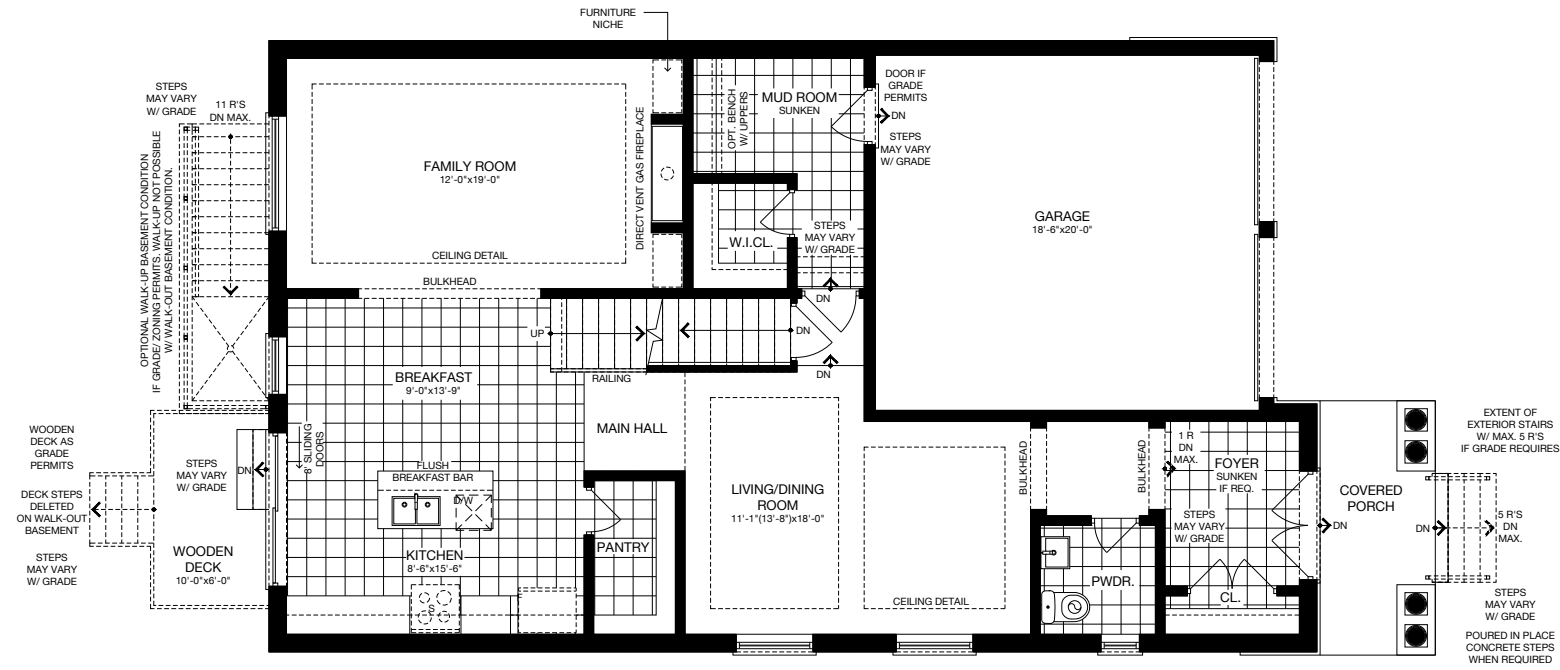
ELEVATION C 2,862 SQ.FT.



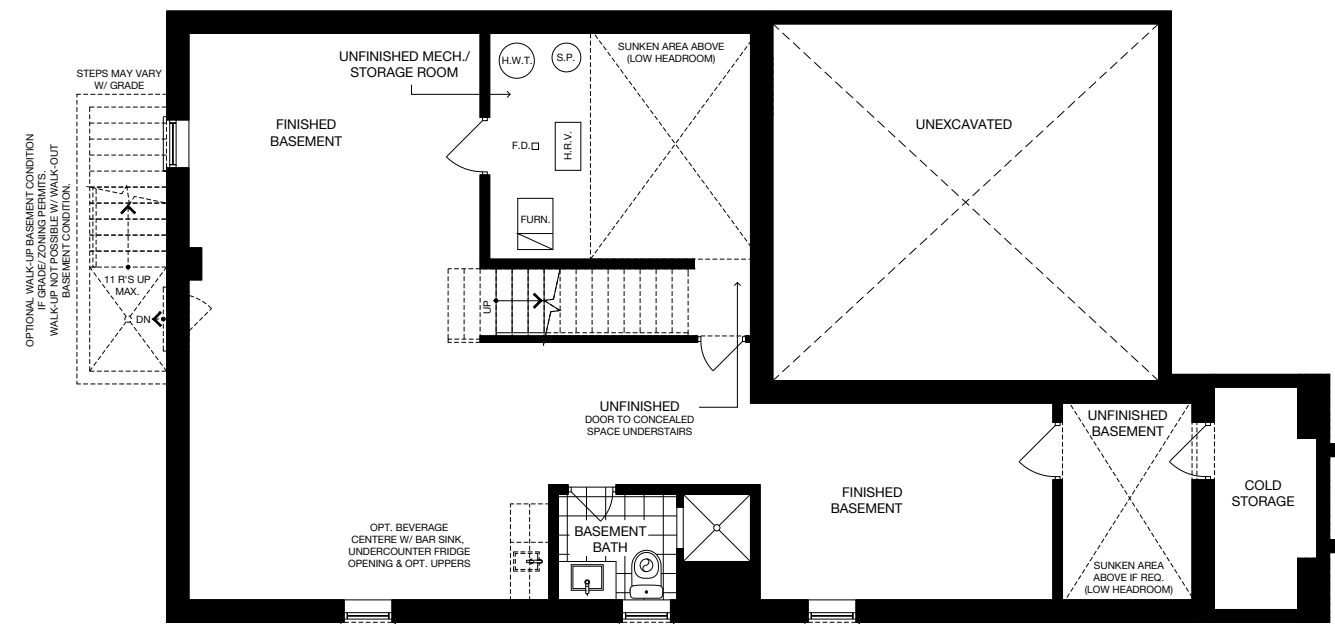
Specifications may change without notice. E.&O.E. All illustrations are artist's impressions. © Aspen Ridge. All Rights Reserved. November 2023.

The Stella

38' SINGLE



GROUND FLOOR (ELEV. A)



OPTIONAL FINISHED BASEMENT (ELEV. A)



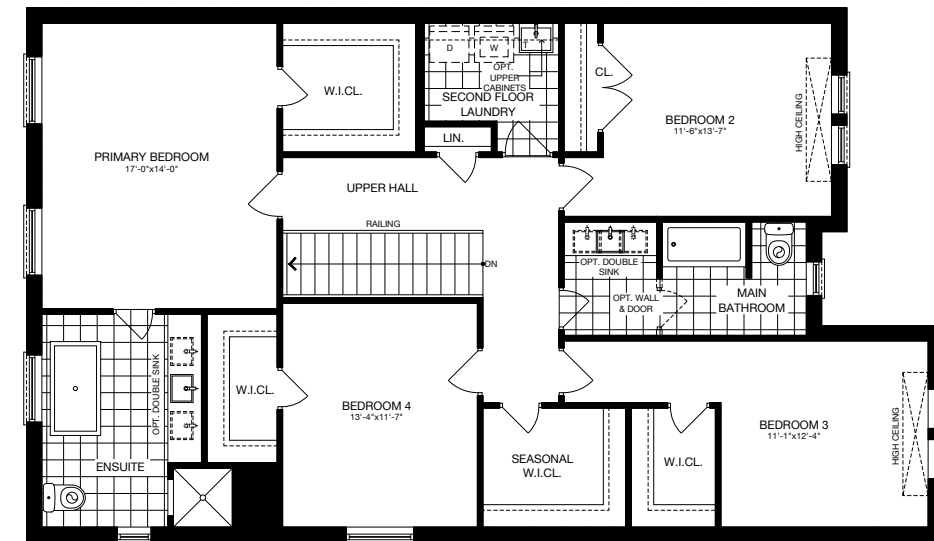
ELEVATION A 2,916 SQ.FT.



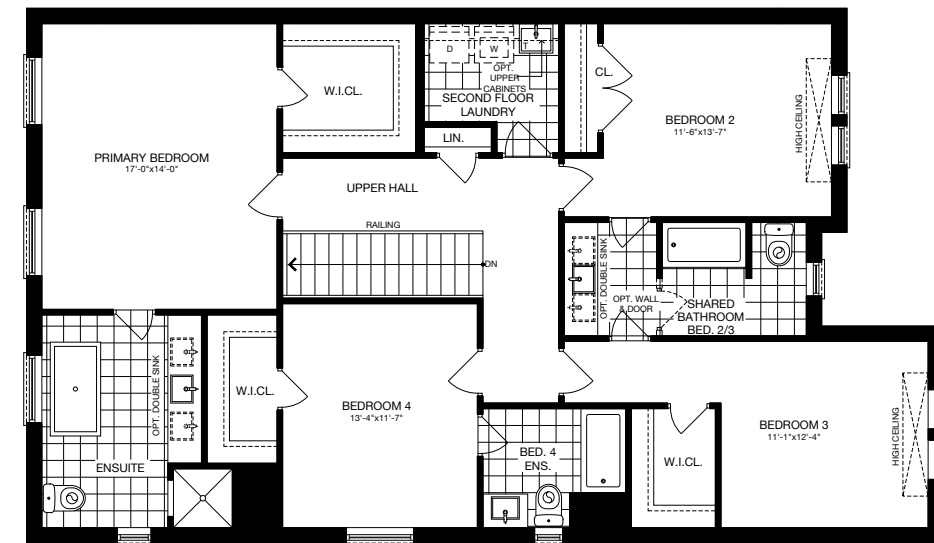
ELEVATION B 2,916 SQ.FT.



ELEVATION C 2,916 SQ.FT.



SECOND FLOOR (ELEV. A) - 4 BEDROOM

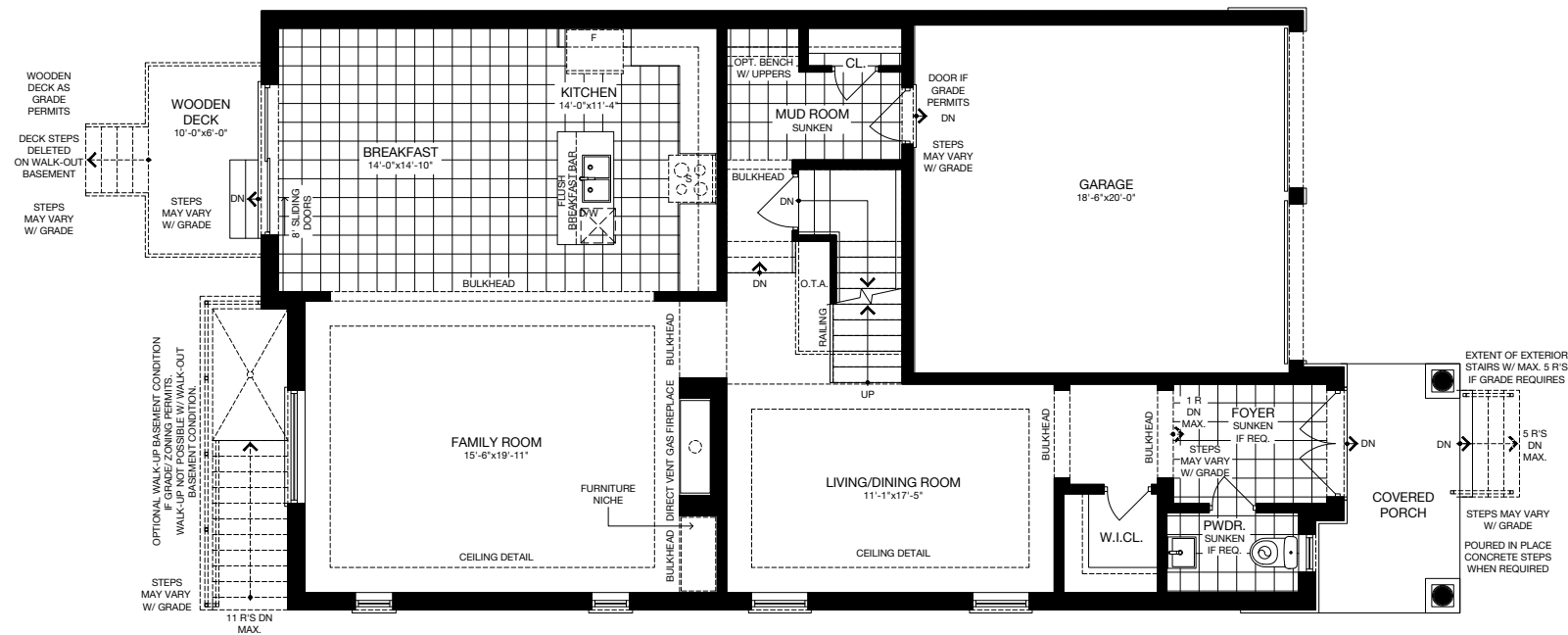


SECOND FLOOR (ELEV. A) - 4 BEDROOM + ENSUITE

Specifications may change without notice. E.&O.E. All illustrations are artist's impressions. © Aspen Ridge. All Rights Reserved. November 2023.

The Willows

38' SINGLE



GROUND FLOOR (ELEV. A)



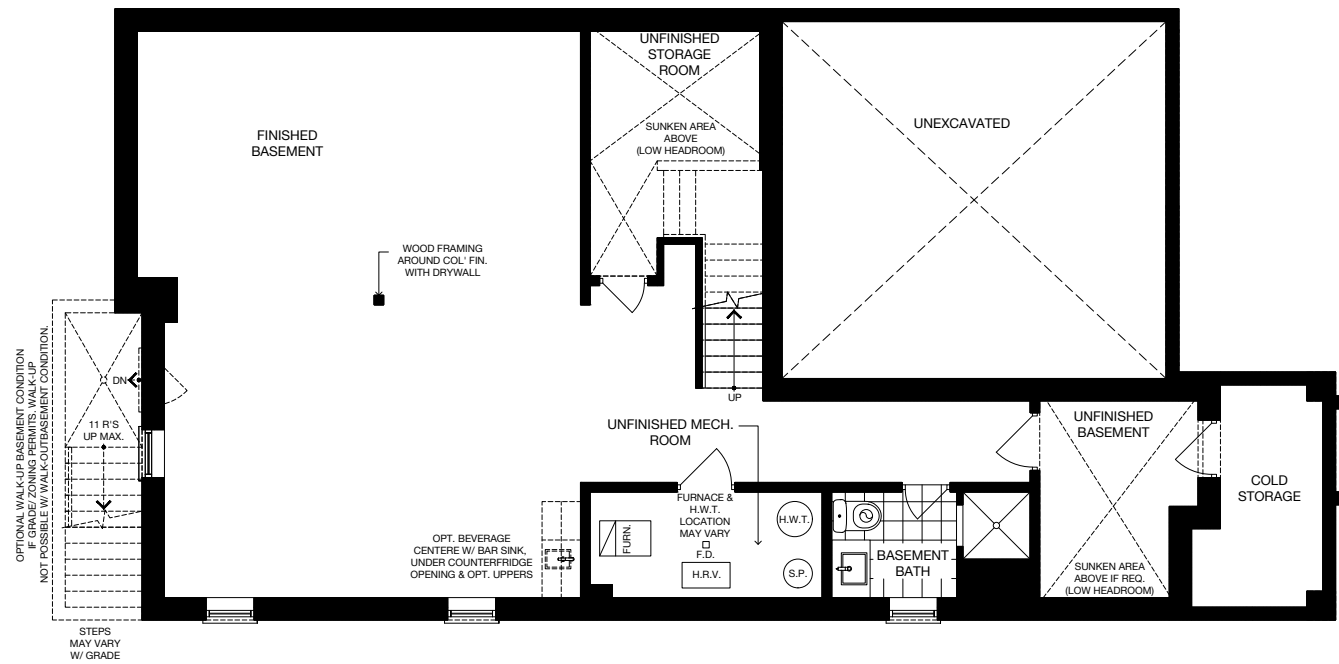
ELEVATION A 3,107 SQ.FT.



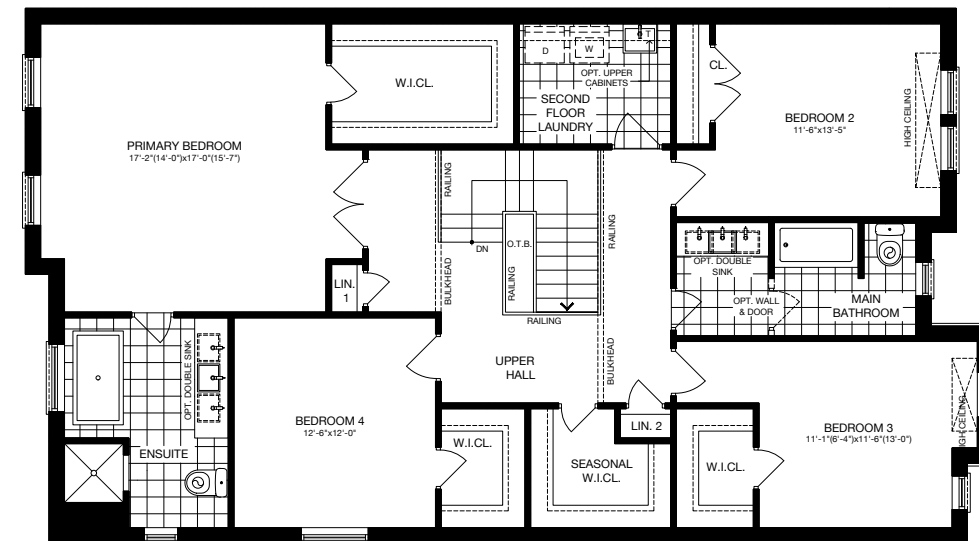
ELEVATION B 3,107 SQ.FT.



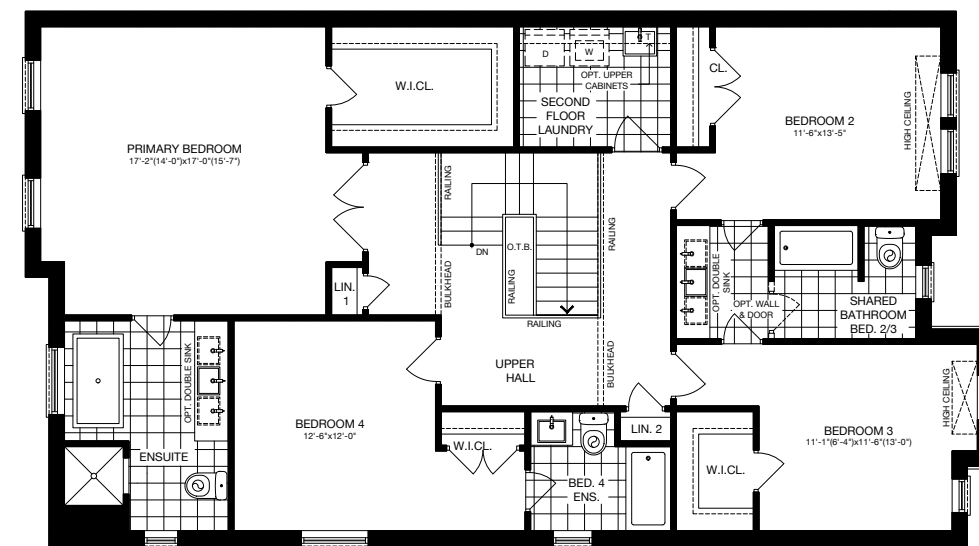
ELEVATION C 3,107 SQ.FT.



OPTIONAL FINISHED BASEMENT (ELEV. A)



SECOND FLOOR (ELEV. A) - 4 BEDROOM

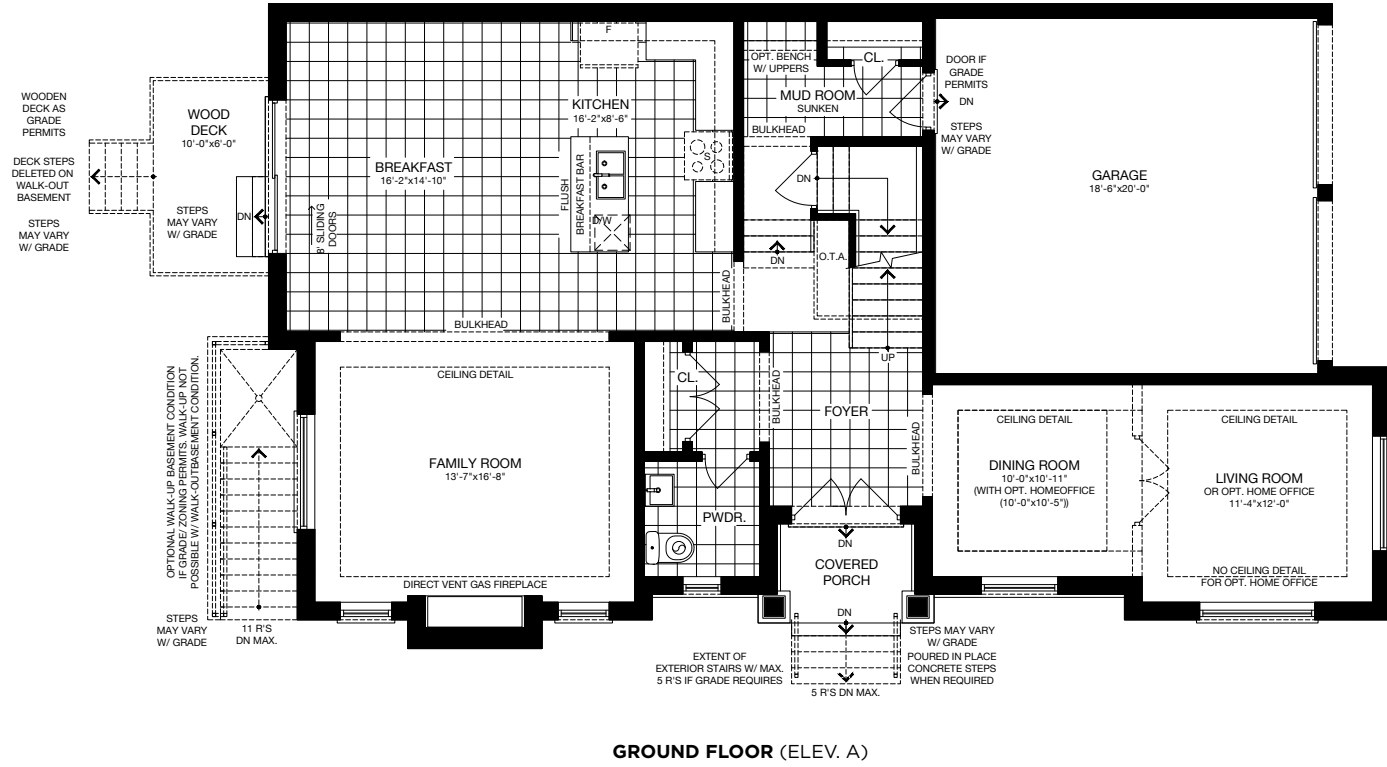


SECOND FLOOR (ELEV. A) - 4 BEDROOM + ENSUITE

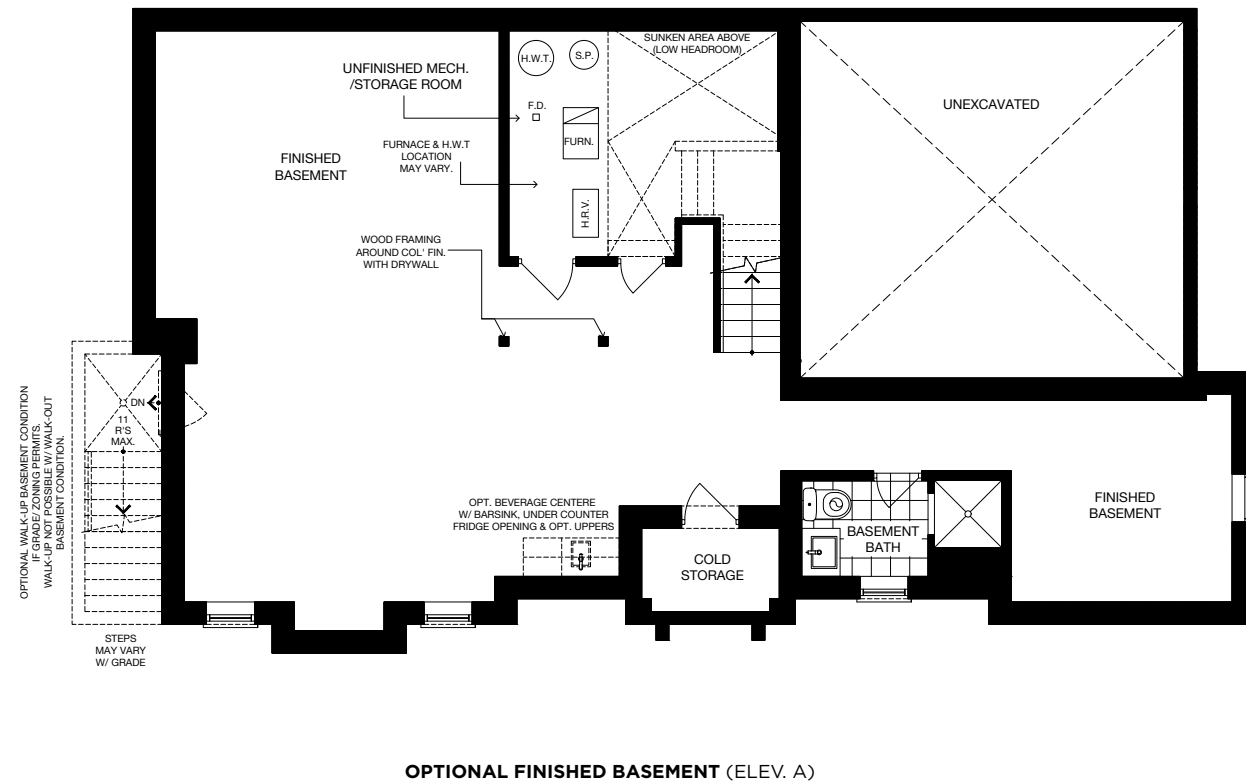
Specifications may change without notice. E.&O.E. All illustrations are artist's impressions. © Aspen Ridge. All Rights Reserved. November 2023.

The Oaklands

38' SINGLE



GROUND FLOOR (ELEV. A)



OPTIONAL FINISHED BASEMENT (ELEV. A)



ELEVATION A 3,061 SQ.FT.



ELEVATION B 3,061 SQ.FT.



ELEVATION C 3,064 SQ.FT.



SECOND FLOOR (ELEV. A) - 3 BEDROOM



SECOND FLOOR (ELEV. A) - 4 BEDROOM

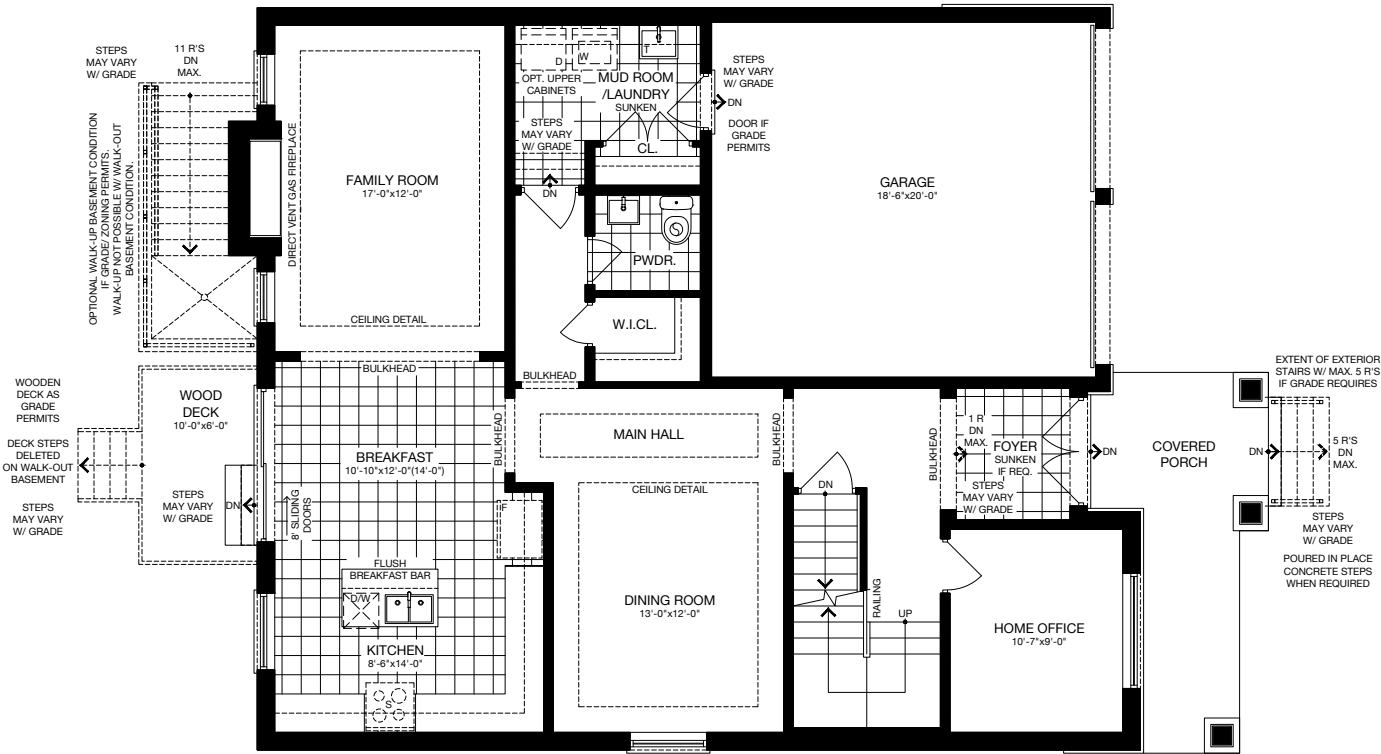
Specifications may change without notice. E.&O.E. All illustrations are artist's impressions. © Aspen Ridge. All Rights Reserved. November 2023.

45'

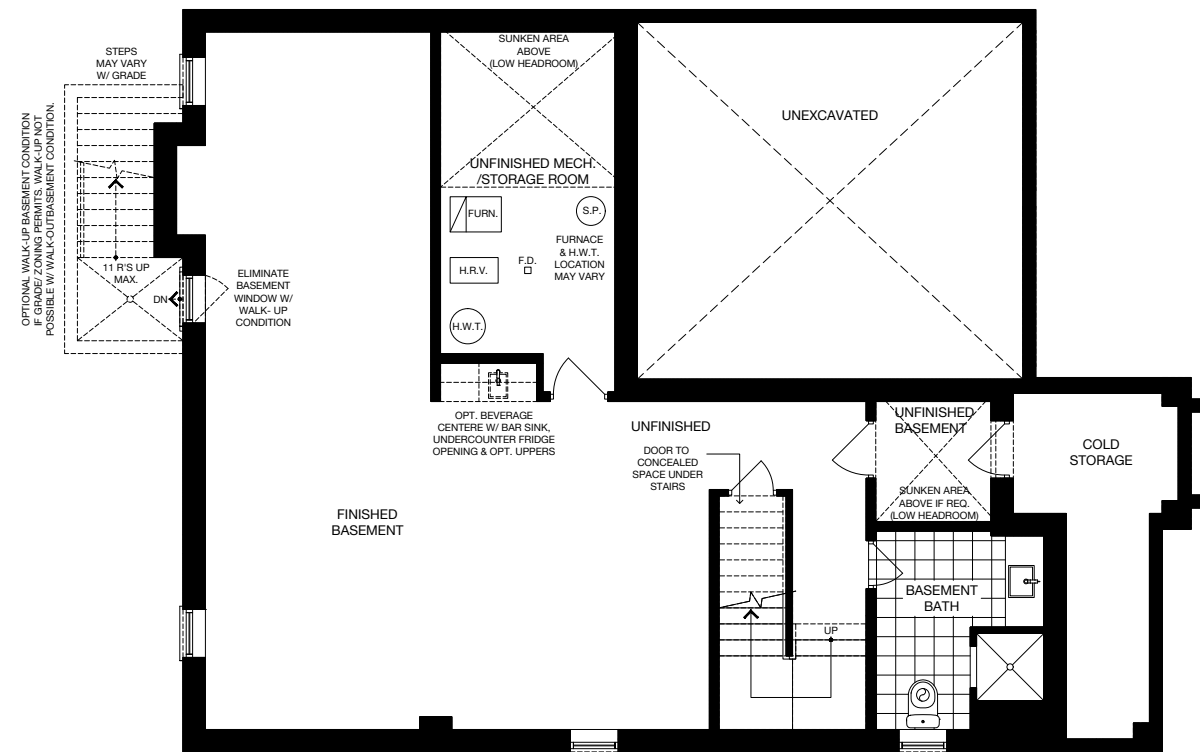
SINGLE FAMILY HOMES

The Warf

45' SINGLE



GROUND FLOOR (ELEV. A)



OPTIONAL FINISHED BASEMENT (ELEV. A)



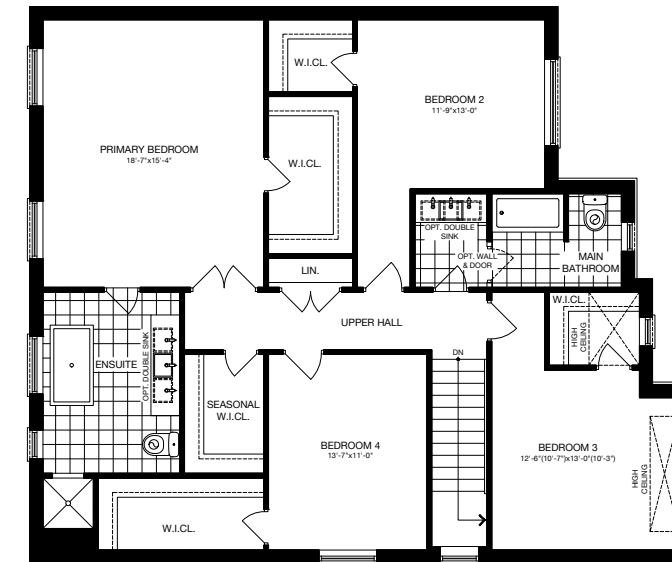
ELEVATION A 2,958 SQ.FT.



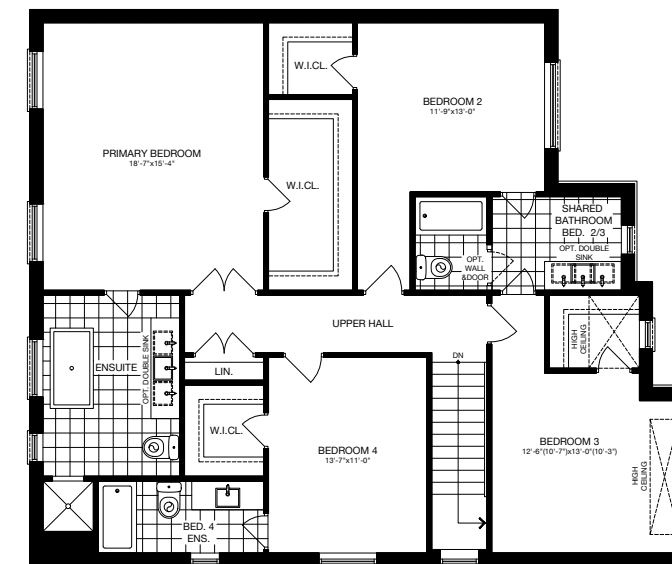
ELEVATION B 2,972 SQ.FT.



ELEVATION C 2,958 SQ.FT.



SECOND FLOOR (ELEV. A) - 4 BEDROOM

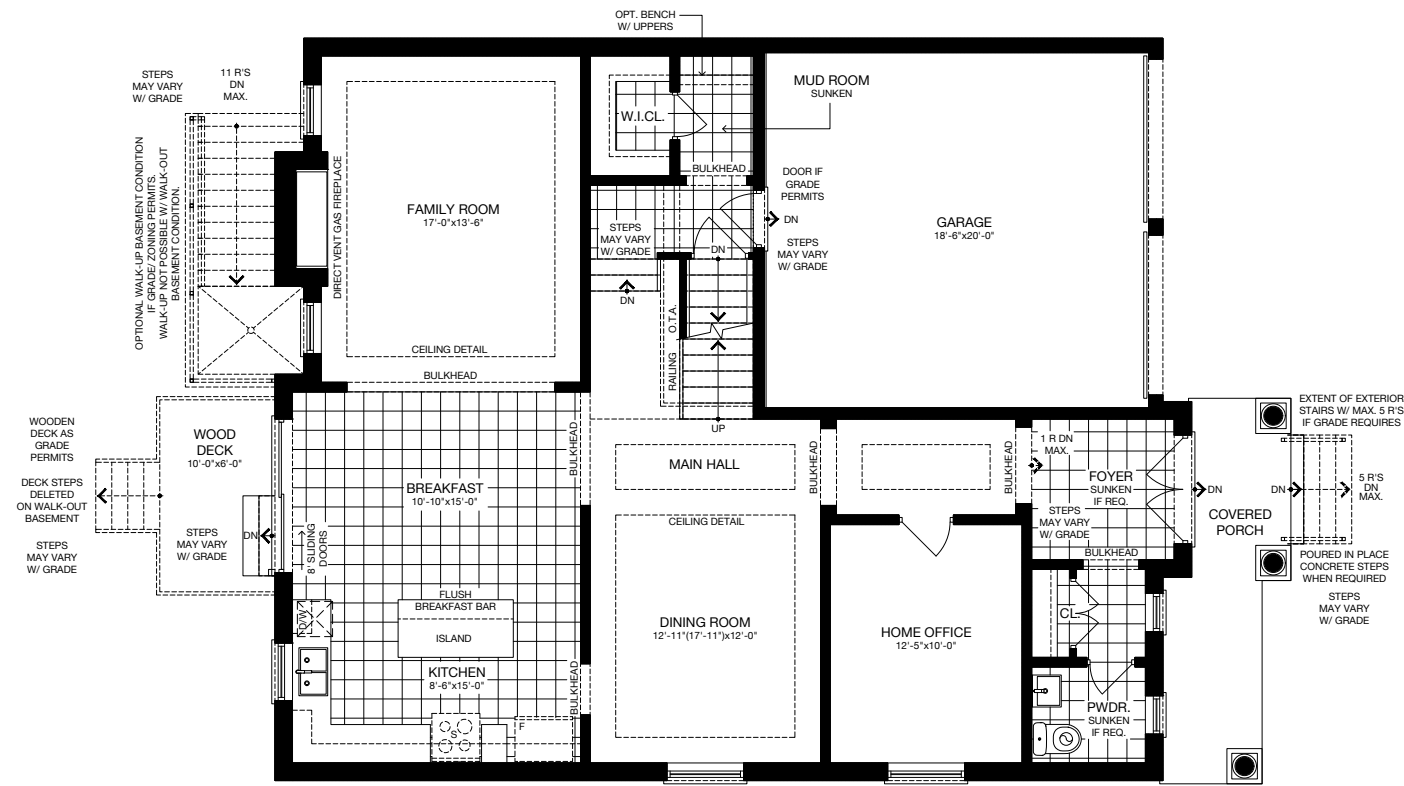


SECOND FLOOR (ELEV. A) - 4 BEDROOM + ENSUITE

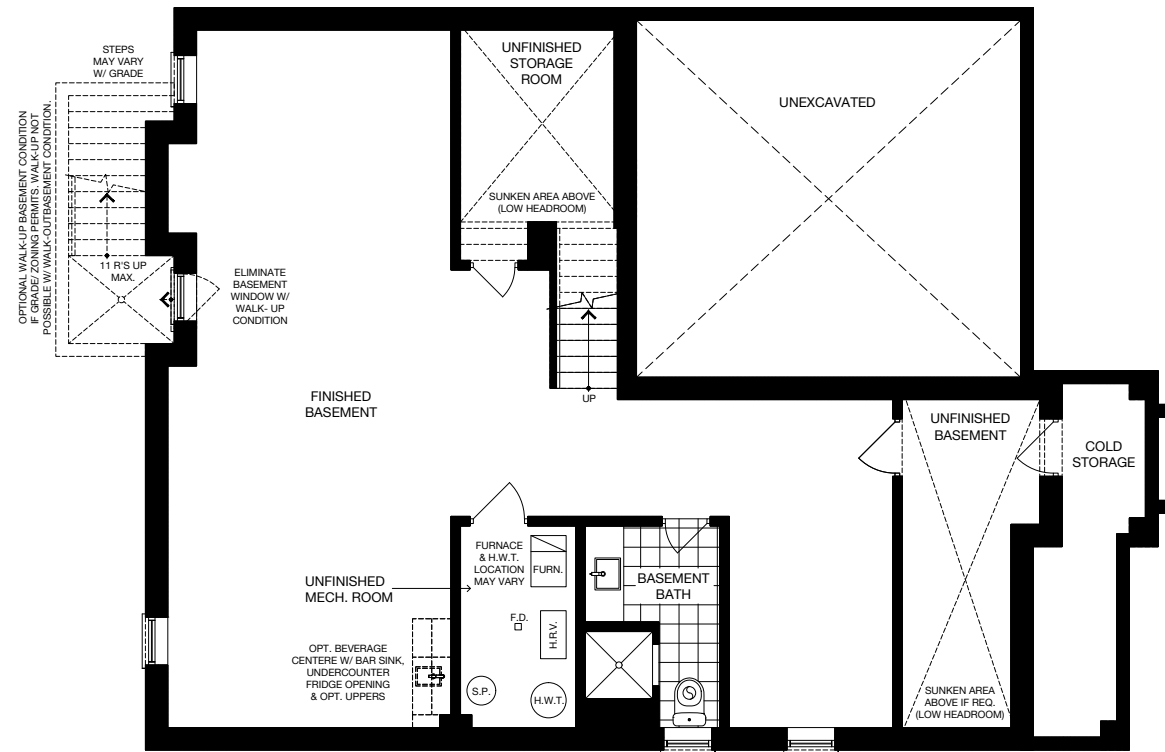
Specifications may change without notice. E.&O.E. All illustrations are artist's impressions. © Aspen Ridge. All Rights Reserved. November 2023.

The Fairview

45' SINGLE



GROUND FLOOR (ELEV. A)



OPTIONAL FINISHED BASEMENT (ELEV. A)



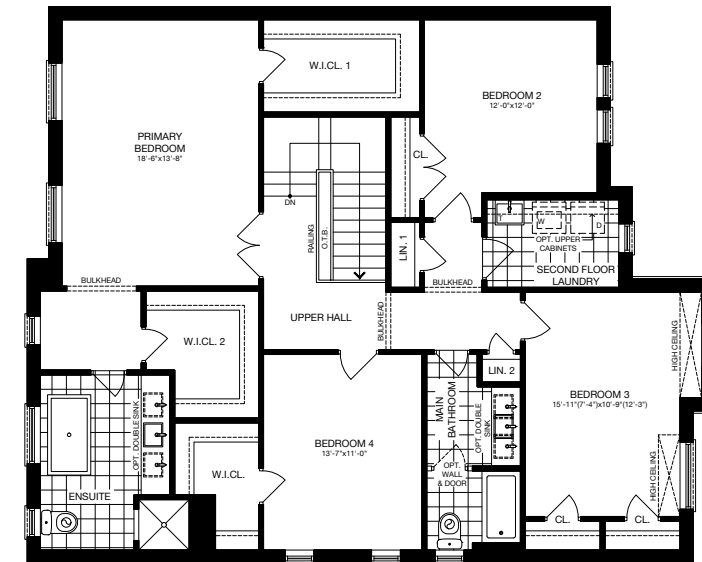
ELEVATION A 3,058 SQ.FT.



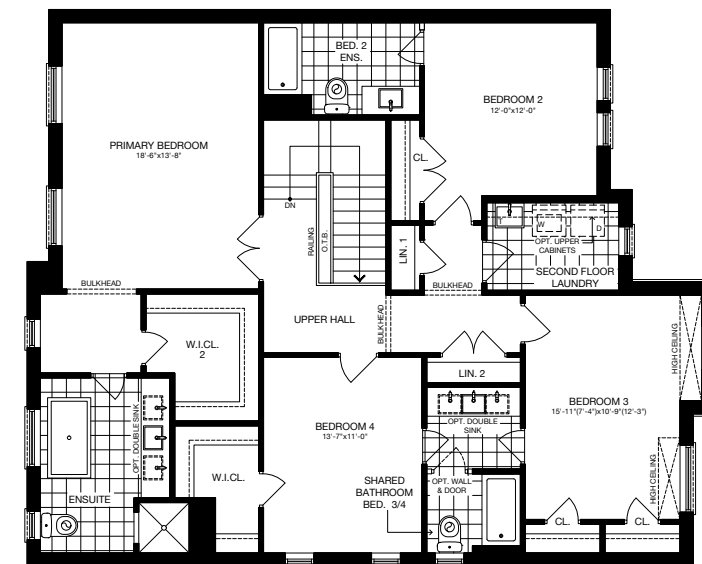
ELEVATION B 3,058 SQ.FT.



ELEVATION C 3,058 SQ.FT.



SECOND FLOOR (ELEV. A) - 4 BEDROOM

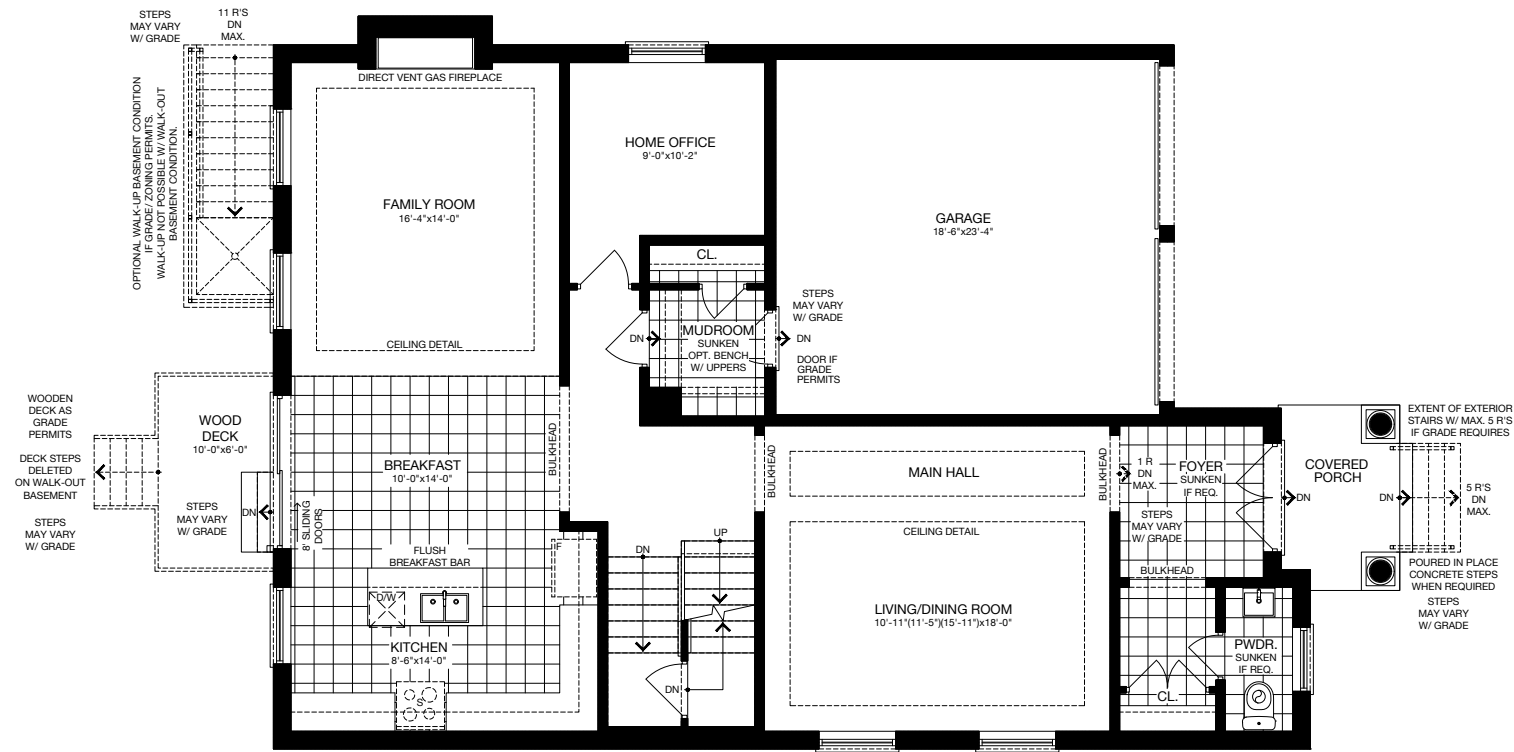


SECOND FLOOR (ELEV. A) - 4 BEDROOM + ENSUITE

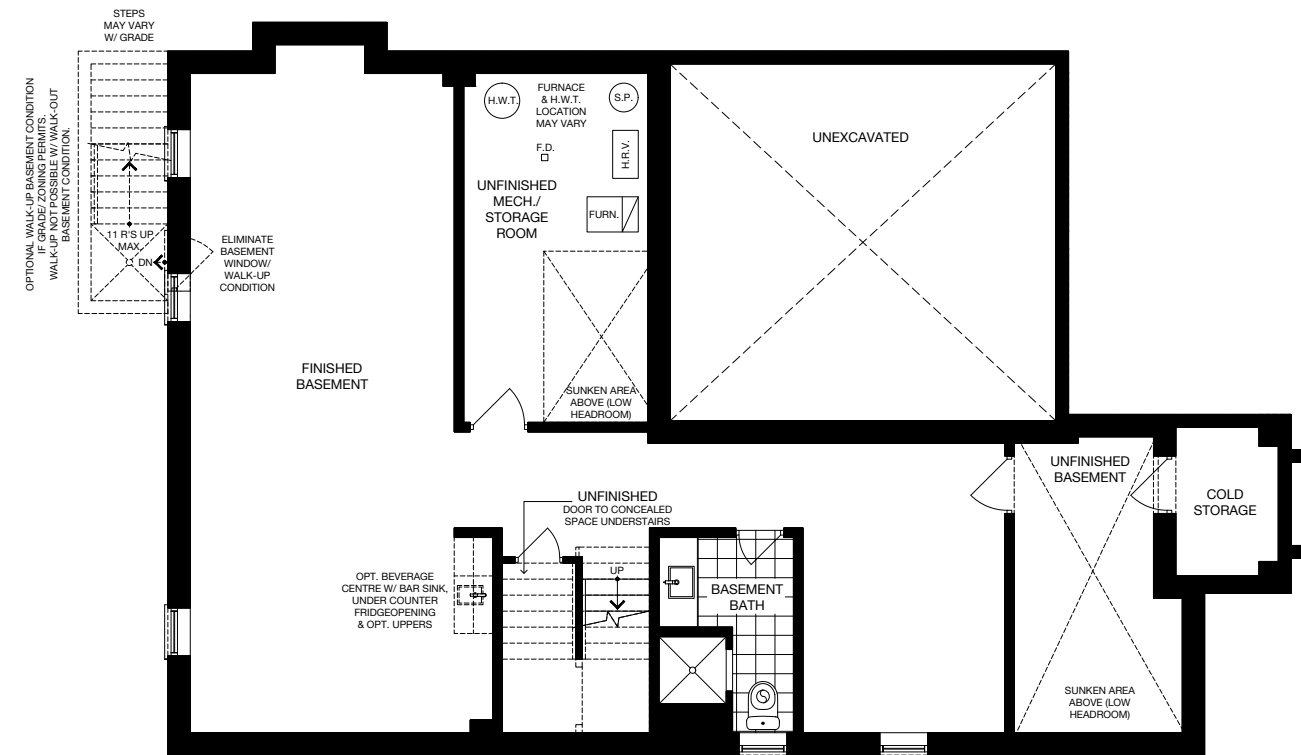
Specifications may change without notice. E.&O.E. All illustrations are artist's impressions. © Aspen Ridge. All Rights Reserved. November 2023.

The Boughs

45' SINGLE



GROUND FLOOR (ELEV. A)



OPTIONAL FINISHED BASEMENT (ELEV. A)



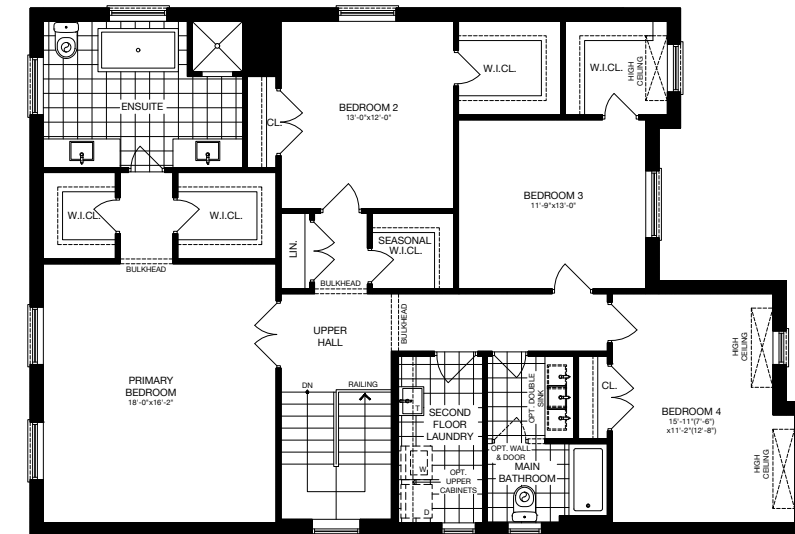
ELEVATION A 3,229 SQ.FT.



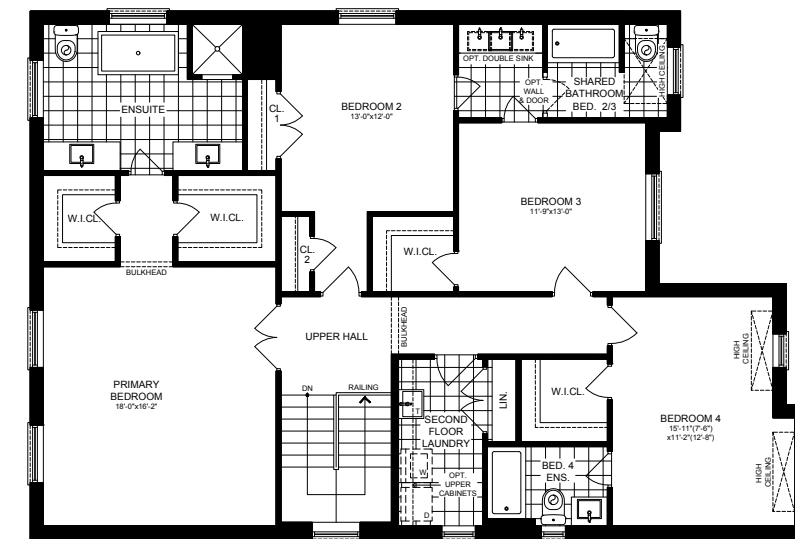
ELEVATION B 3,229 SQ.FT.



ELEVATION C 3,229 SQ.FT.



SECOND FLOOR (ELEV. A) - 4 BEDROOM

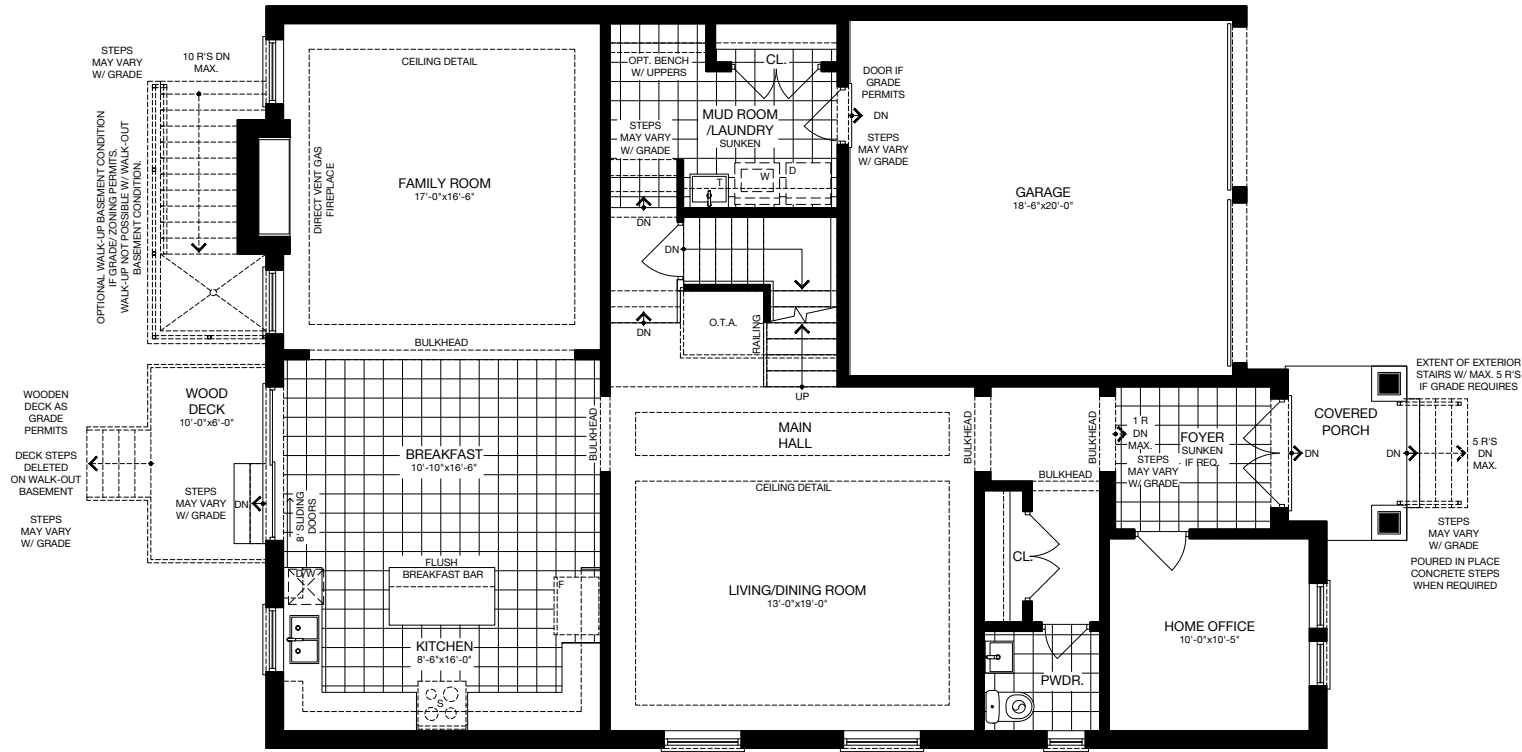


SECOND FLOOR (ELEV. A) - 4 BEDROOM + ENSUITE

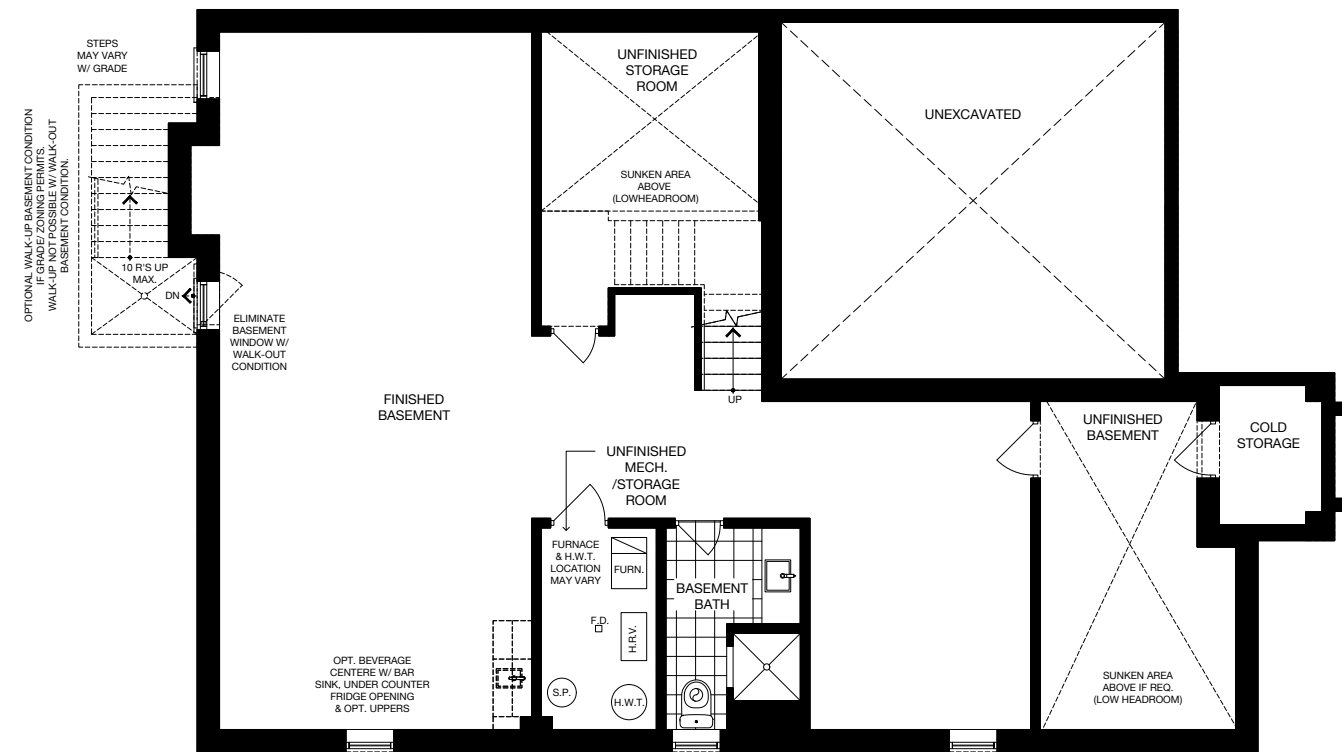
Specifications may change without notice. E.&O.E. All illustrations are artist's impressions. © Aspen Ridge. All Rights Reserved. November 2023.

The Driftwood

45' SINGLE



GROUND FLOOR (ELEV. A)



OPTIONAL FINISHED BASEMENT (ELEV. A)



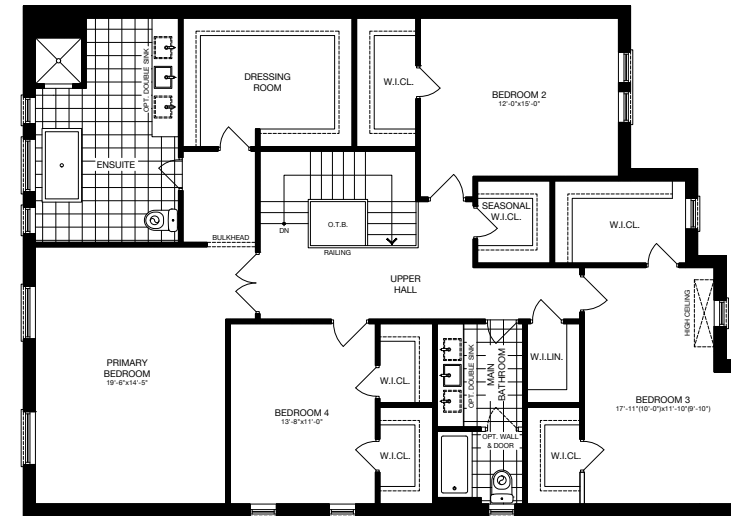
ELEVATION A 3,618 SQ.FT.



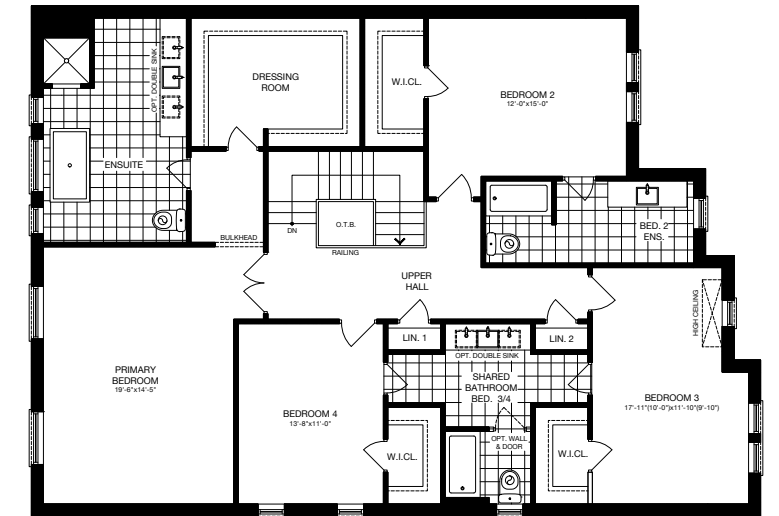
ELEVATION B 3,618 SQ.FT.



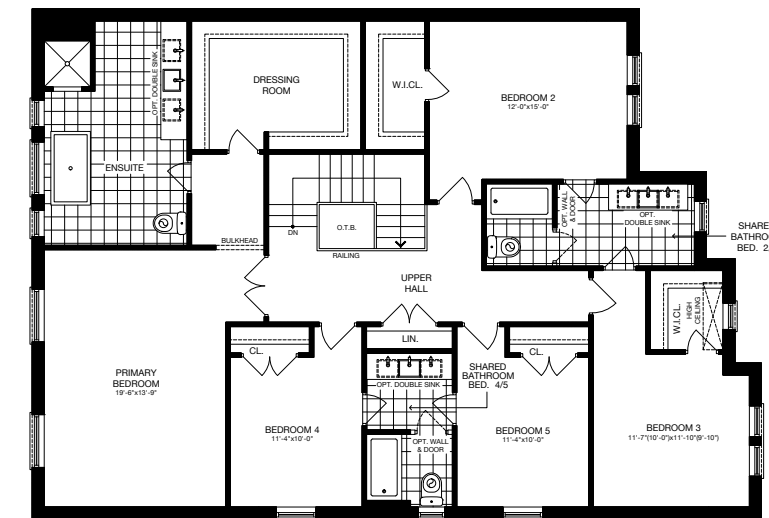
ELEVATION C 3,618 SQ.FT.



SECOND FLOOR (ELEV. A) - 4 BEDROOM



SECOND FLOOR (ELEV. A) - 4 BEDROOM + ENSUITE



SECOND FLOOR (ELEV. A) - 5 BEDROOM

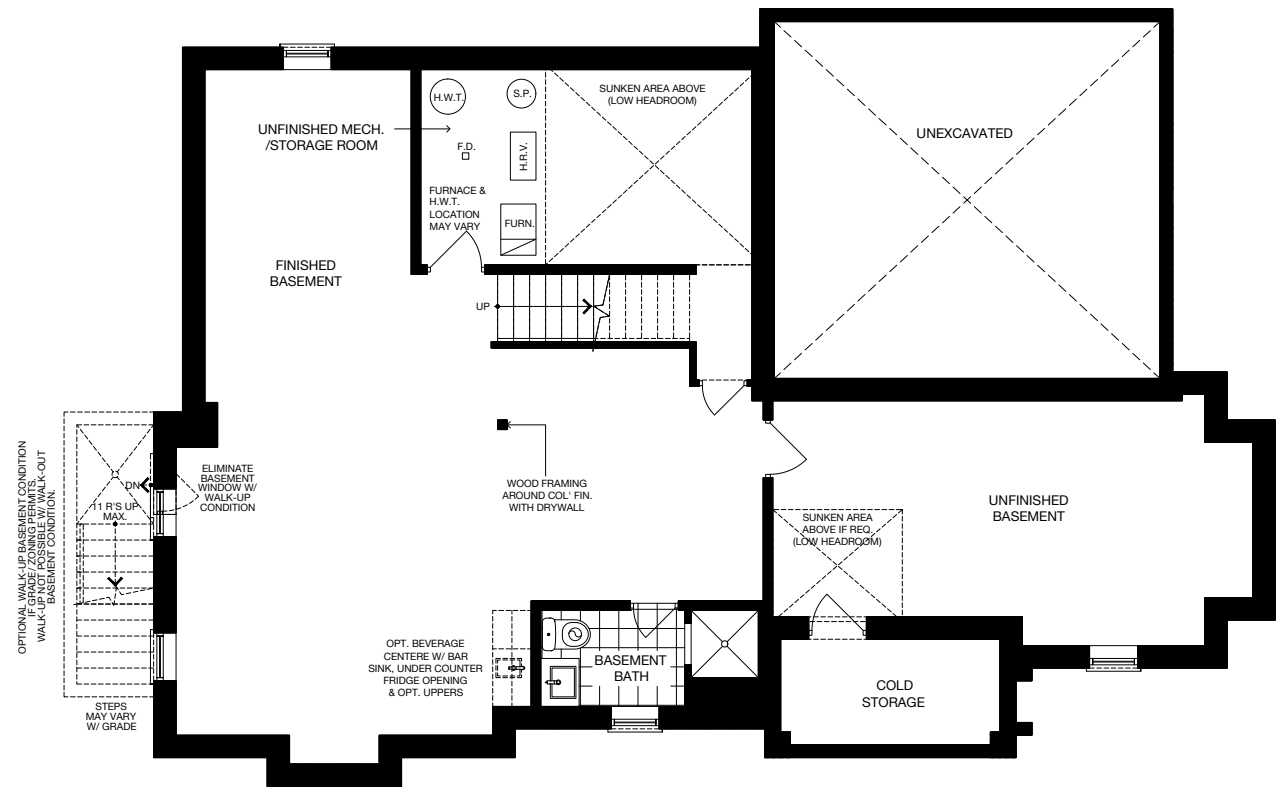
Specifications may change without notice. E.&O.E. All illustrations are artist's impressions. © Aspen Ridge. All Rights Reserved. November 2023.

The Balsam

45' SINGLE



GROUND FLOOR (ELEV. A)



OPTIONAL FINISHED BASEMENT (ELEV. A)



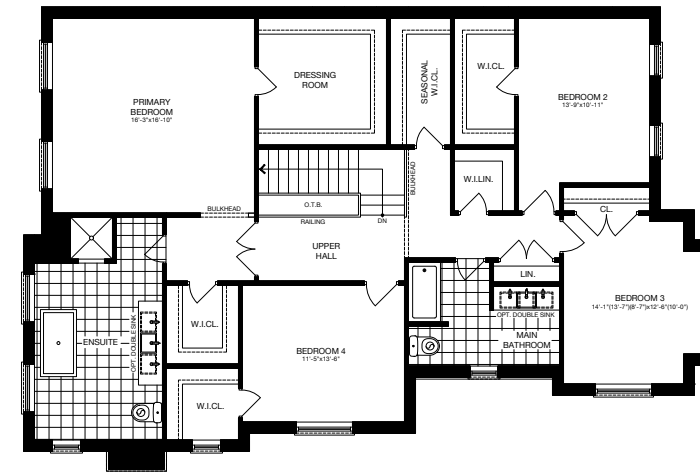
ELEVATION A 3,390 SQ.FT.



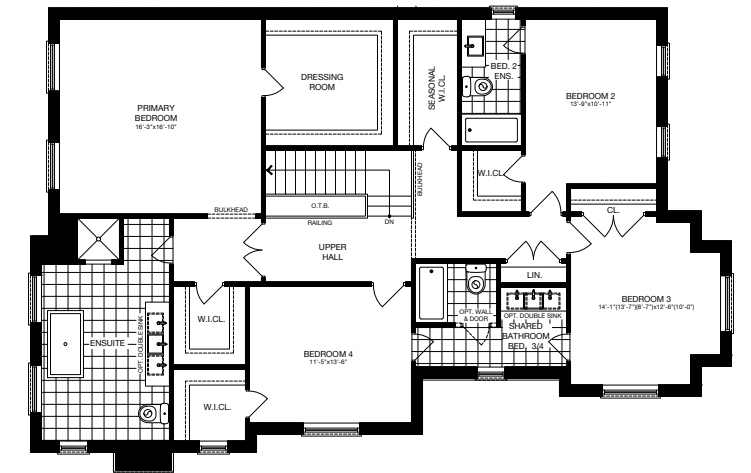
ELEVATION B 3,390 SQ.FT.



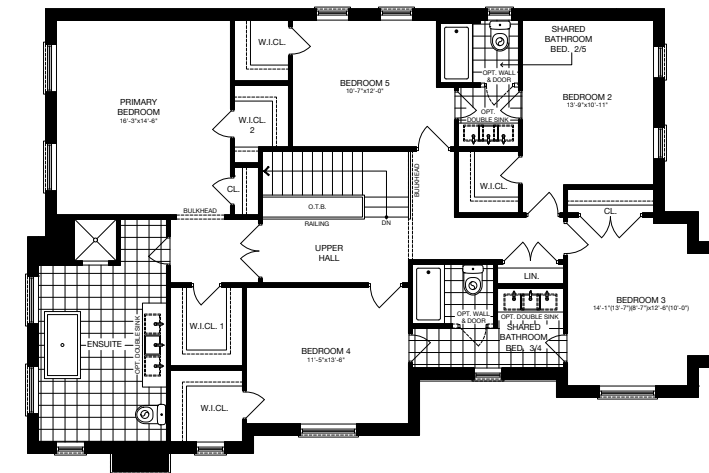
ELEVATION C 3,394 SQ.FT.



SECOND FLOOR (ELEV. A) - 4 BEDROOM



SECOND FLOOR (ELEV. A) - 4 BEDROOM + ENSUITE



SECOND FLOOR (ELEV. A) - 5 BEDROOM

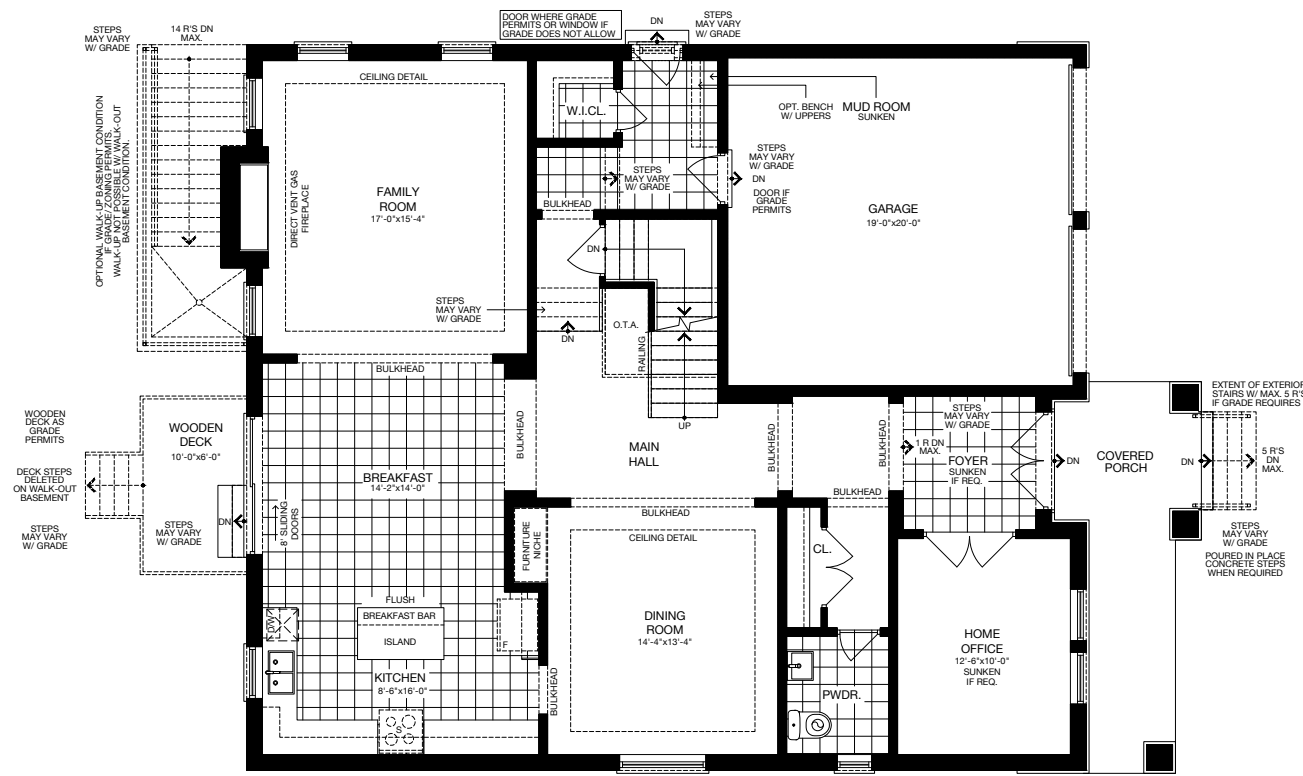
Specifications may change without notice. E.&O.E. All illustrations are artist's impressions. © Aspen Ridge. All Rights Reserved. November 2023.

50'

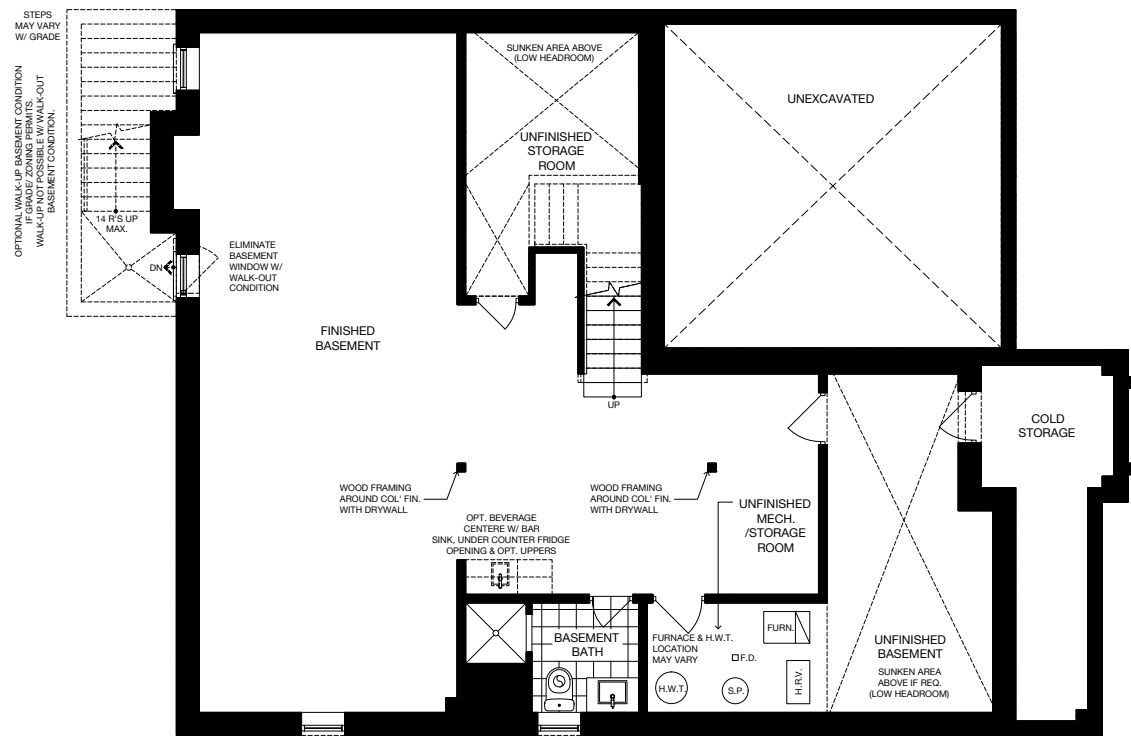
SINGLE FAMILY HOMES

The Echos

50' SINGLE



GROUND FLOOR (ELEV. A)



OPTIONAL FINISHED BASEMENT (ELEV. A)



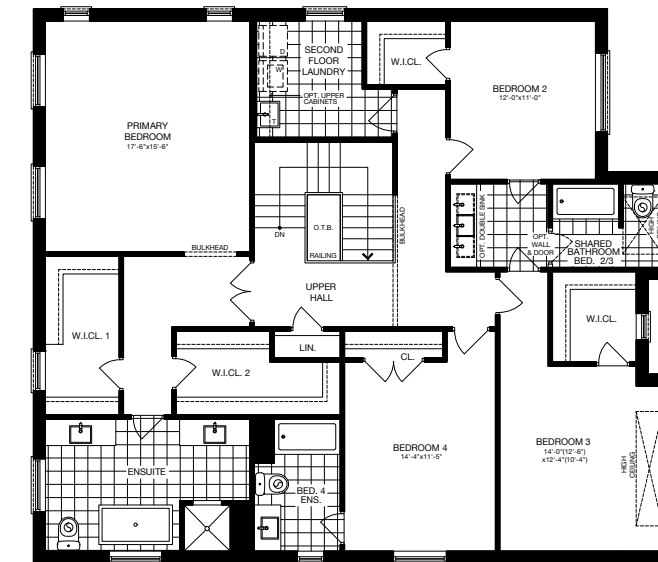
ELEVATION A 3,575 SQ.FT.



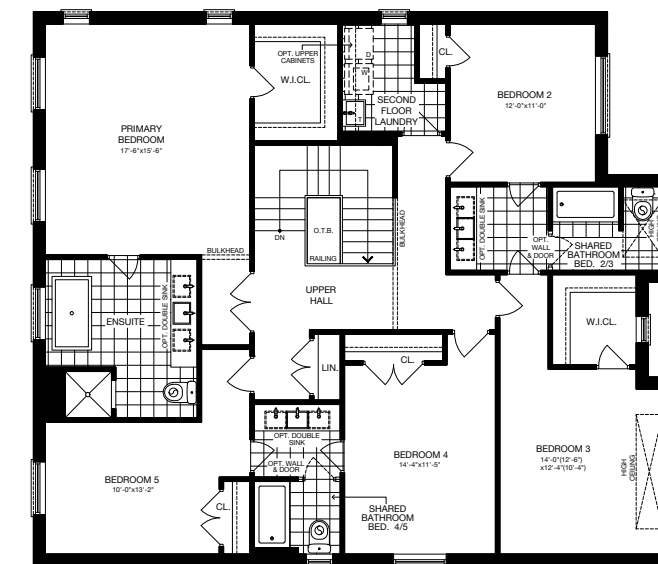
ELEVATION B 3,575 SQ.FT.



ELEVATION C 3,575 SQ.FT.



SECOND FLOOR (ELEV. A) - 4 BEDROOM

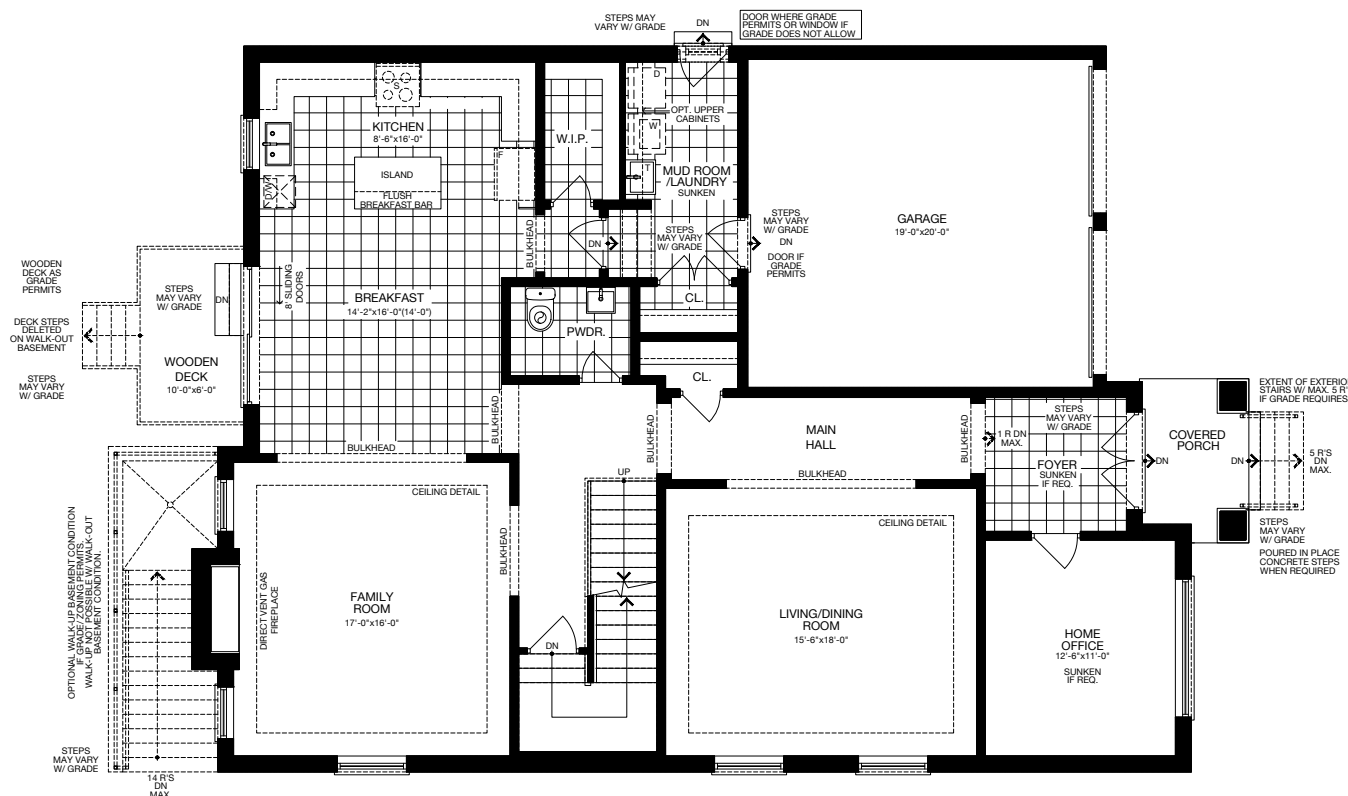


SECOND FLOOR (ELEV. A) - 5 BEDROOM

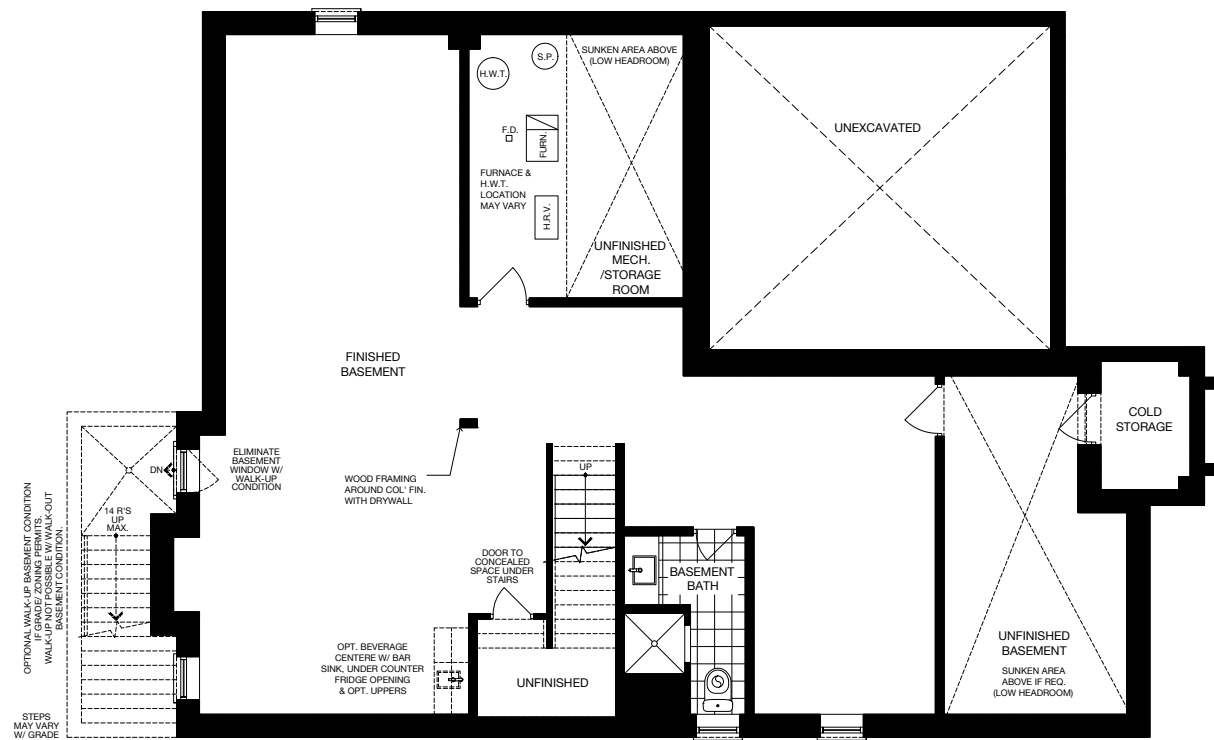
Specifications may change without notice. E.&O.E. All illustrations are artist's impressions. © Aspen Ridge. All Rights Reserved. November 2023.

The Beeches

50' SINGLE



GROUND FLOOR (ELEV. A)



OPTIONAL FINISHED BASEMENT (ELEV. A)



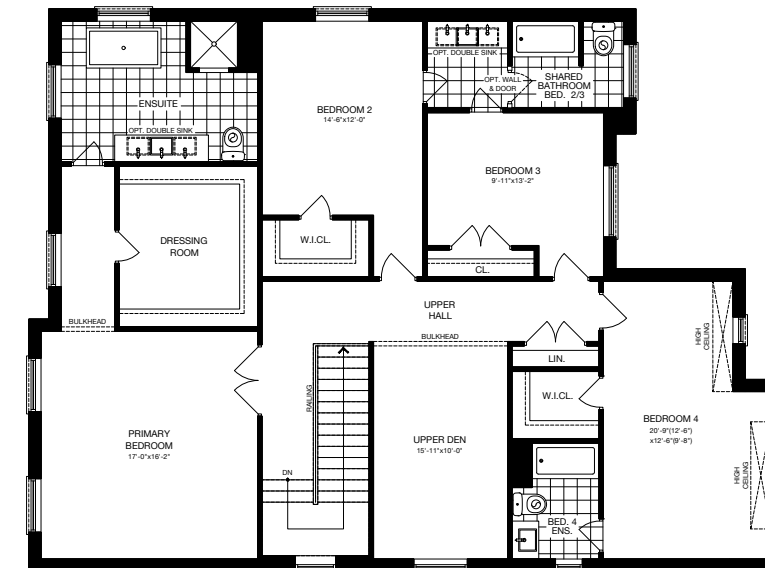
ELEVATION A 3,891 SQ.FT.



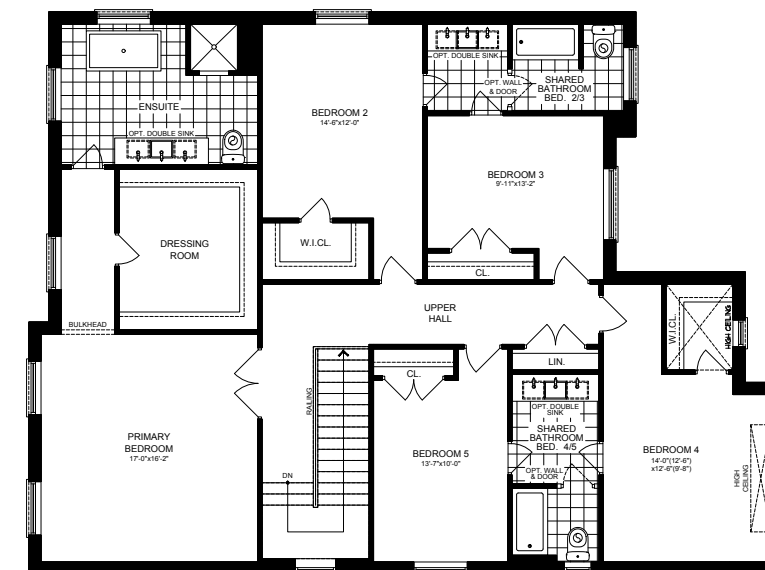
ELEVATION B 3,898 SQ.FT.



ELEVATION C 3,891 SQ.FT.



SECOND FLOOR (ELEV. A) - 4 BEDROOM

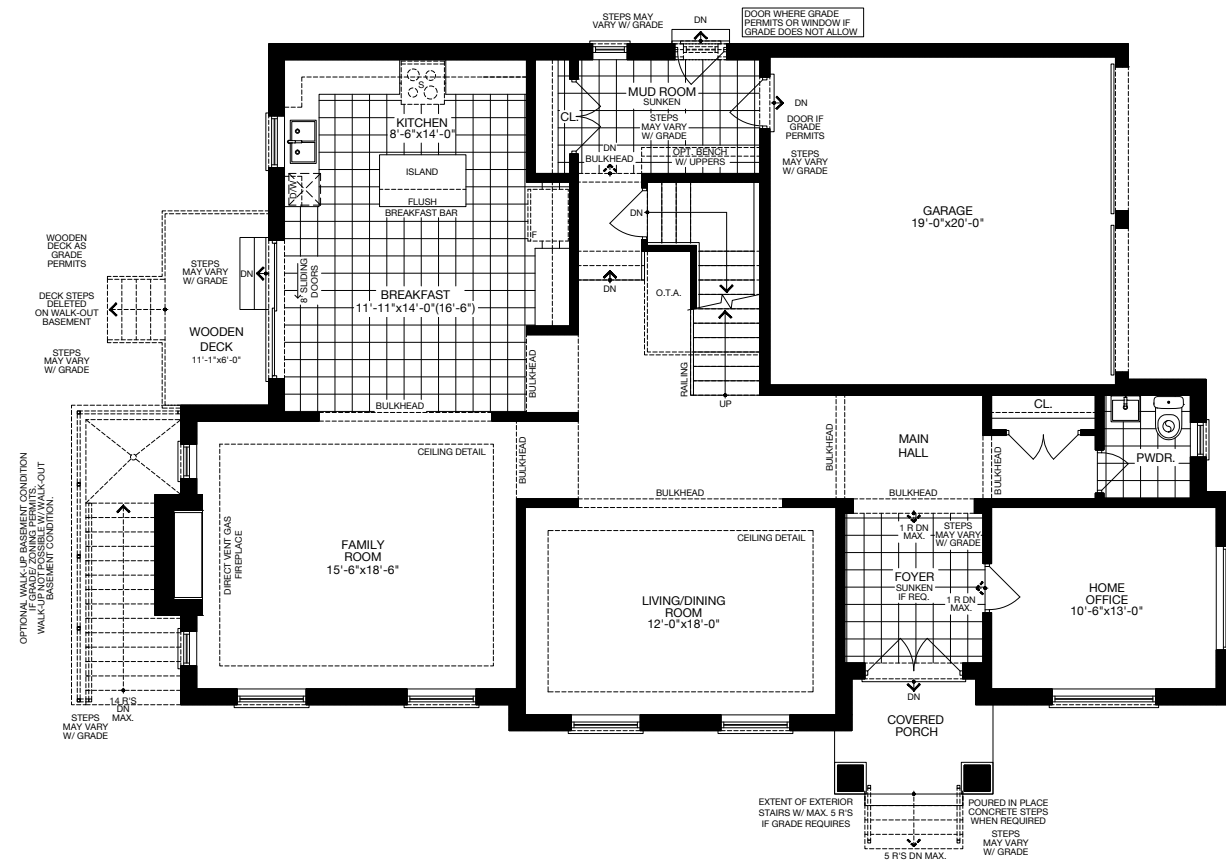


SECOND FLOOR (ELEV. A) - 5 BEDROOM

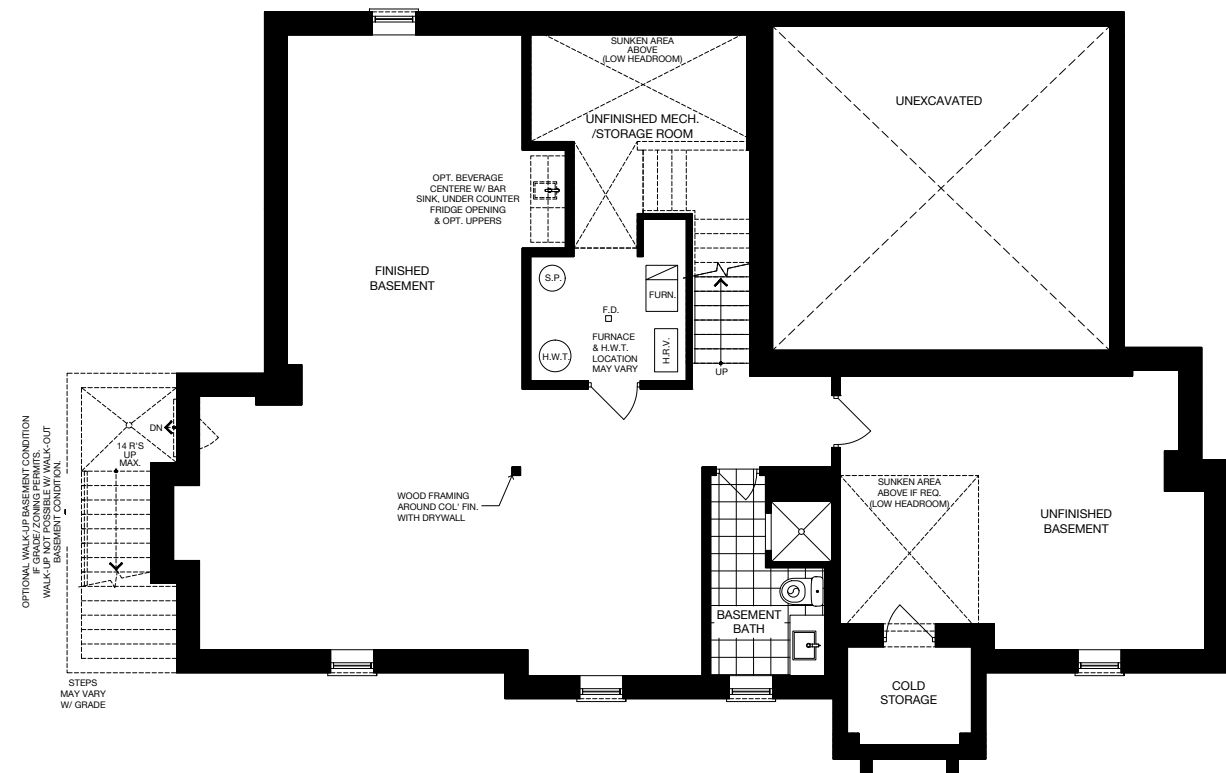
Specifications may change without notice. E.&O.E. All illustrations are artist's impressions. © Aspen Ridge. All Rights Reserved. November 2023.

The Cypress

50' SINGLE



GROUND FLOOR (ELEV. A)



OPTIONAL FINISHED BASEMENT (ELEV. A)



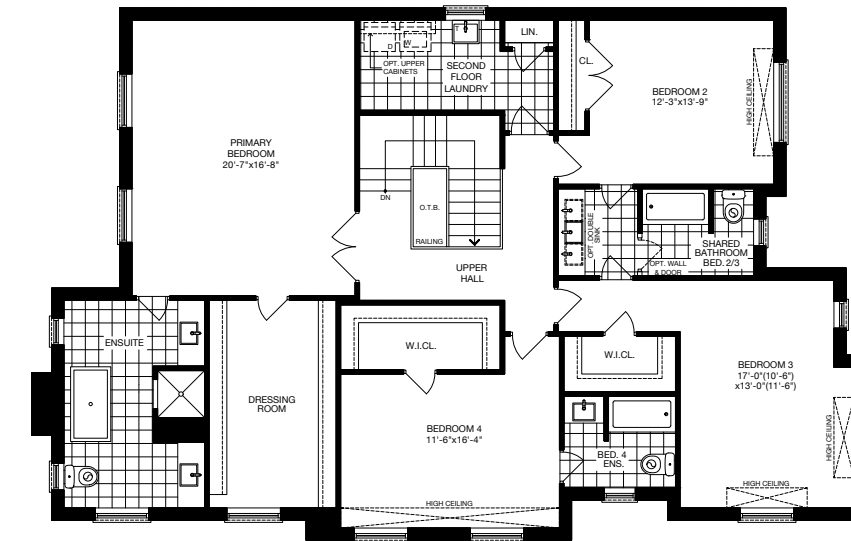
ELEVATION A 3,811 SQ.FT.



ELEVATION B 3,825 SQ.FT.



ELEVATION C 3,815 SQ.FT.



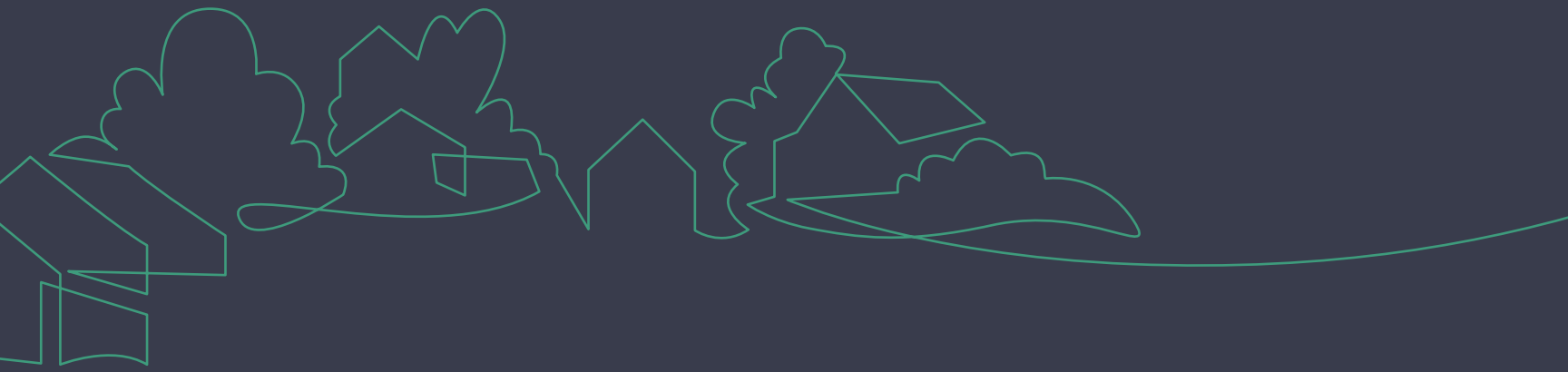
SECOND FLOOR (ELEV. A) - 4 BEDROOM



SECOND FLOOR (ELEV. A) - 5 BEDROOM

Specifications may change without notice. E.&O.E. All illustrations are artist's impressions. © Aspen Ridge. All Rights Reserved. November 2023.

ASPENRIDGE®



ASPENRIDGE®

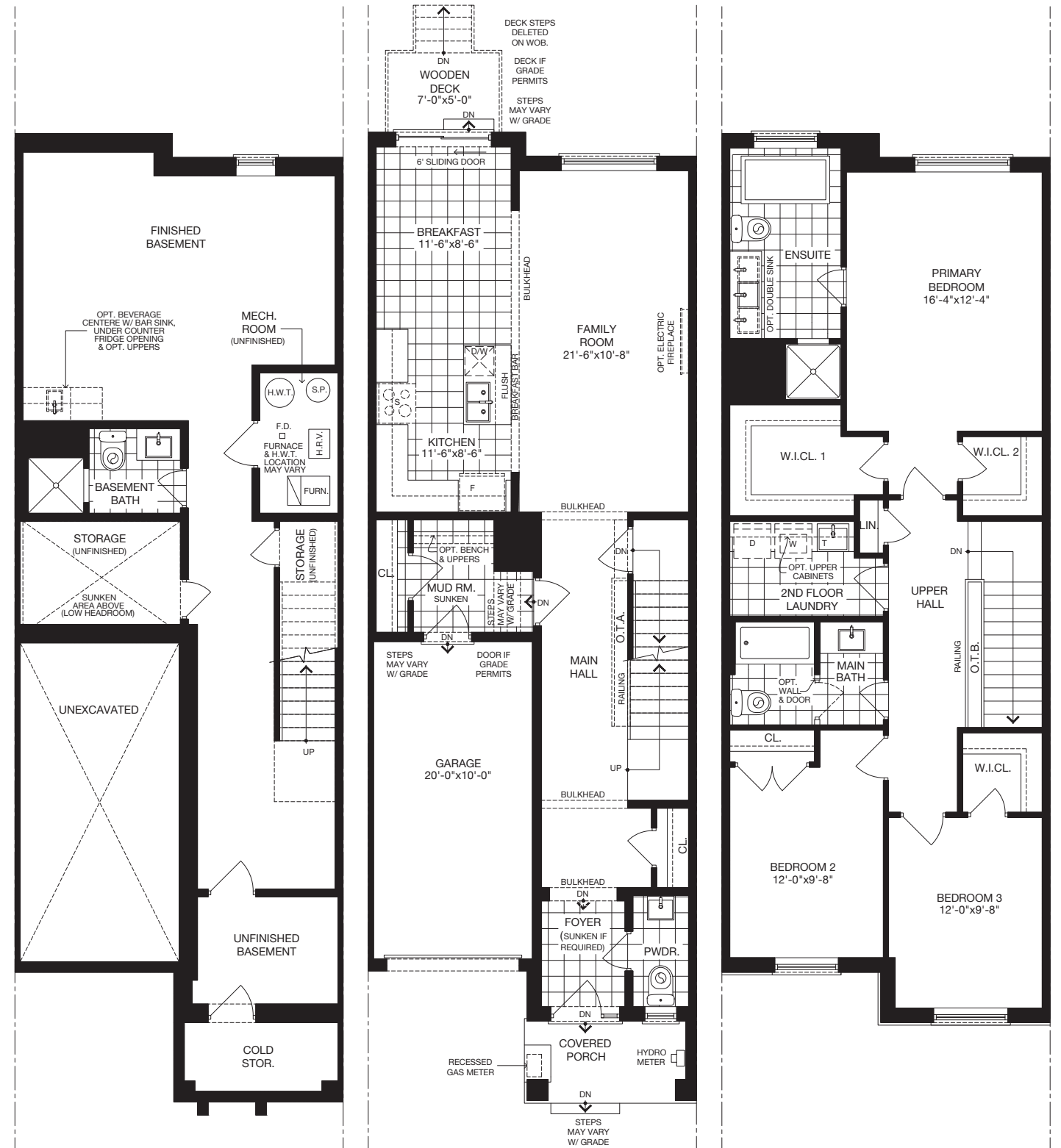


The Hemlock

21' TOWNHOMES



ELEVATION C 1,997 SQ.FT.

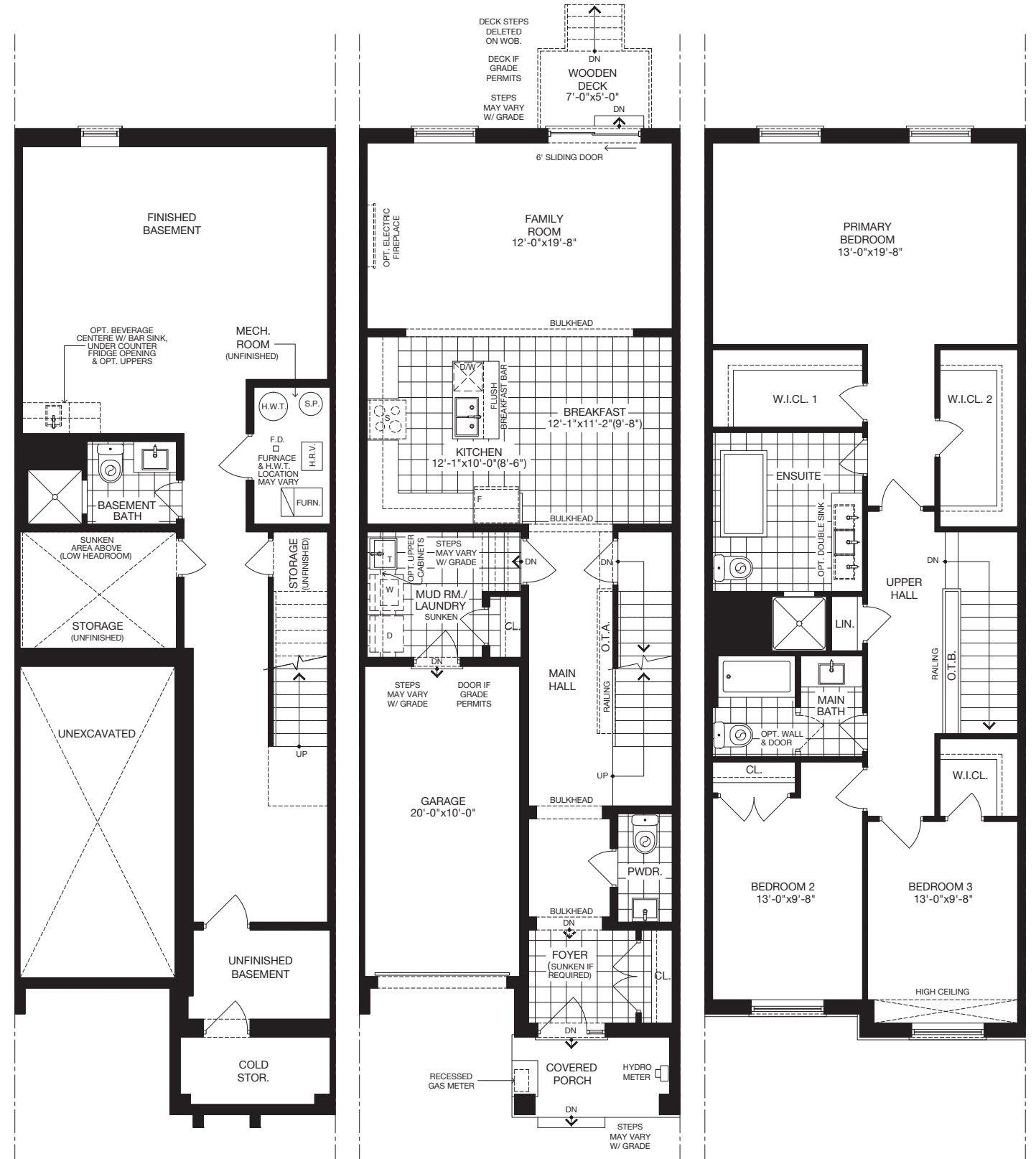


The Rosewood

21' TOWNHOMES



ELEVATION C 2,153 SQ.FT.



The Hawthron

21' TOWNHOMES



ELEVATION C 2,123 SQ.FT.

