

# OLIVE

RESIDENCES

## EXCLUSIVE INCENTIVES

**\$50,000 CREDIT ON CLOSING**

**~~\$5,000~~ FREE RIGHT TO LEASE**

*By Request Only*

**~~\$5,000~~ FREE ASSIGNMENT FEE\***

## CAPPED DEVELOPMENT CHARGES

JR 1 Bed / 1B / 1B+D: \$15,000

2B and Larger: \$18,000

## TOTAL OF \$50,000 DEPOSIT STRUCTURE

\$10,000 (Bank Draft) On Signing

\$20,000 in 30 days

\$20,000 in 90 days

Balance to 20% on Occupancy

## 5% DEPOSIT STRUCTURE FOR TOWNHOMES ONLY

\$10,000 (Bank Draft) on Signing

Balance to 5% in 30 days

15% on Occupancy

\*Legal fees will apply. Please speak to Sales Representative for further details. All prices, figures and materials are preliminary and are subject to change without notice E. & O. E. All areas and stated room dimensions are approximate only and are calculated in accordance with the HCRA Directive regarding Floor Area Calculations. The contents of this document are not intended to solicit interest from ineligible individuals or entities (non-Canadians, unless exempt) as defined by the Prohibition on the Purchase of Residential Property by Non-Canadians Act. Exclusive Listing: Baker Real Estate Incorporated, Brokerage. Brokers Protected. E. & O.E. July 15, 2024.



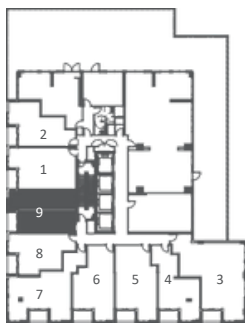
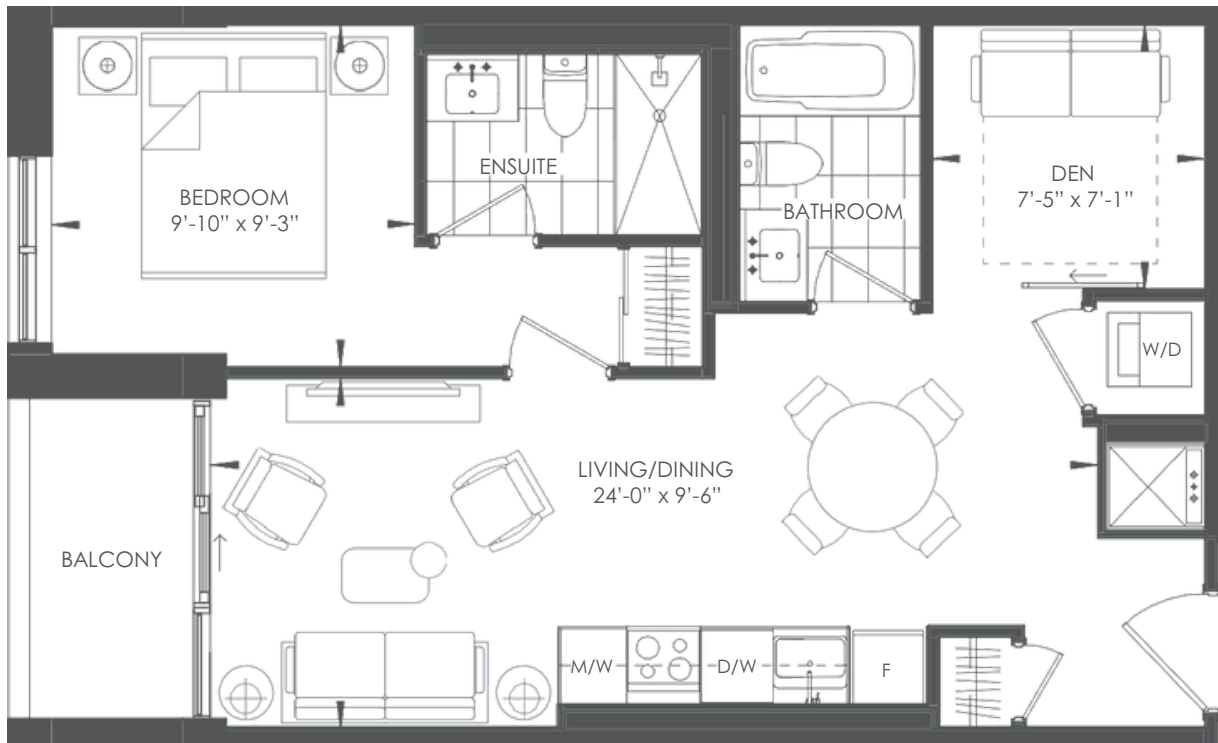
**Baker**  
Real Estate Incorporated

# BASIL

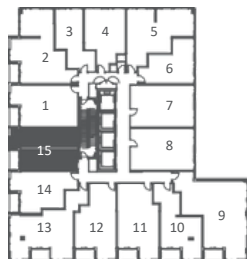
1 BED + DEN / 2 BATH

INDOOR 620 SF / OUTDOOR 39 SF / TOTAL 659 SF

**OLIVE**  
RESIDENCES



FLOOR: 3



FLOOR: 5



Floor plans are intended to give a general indication of the proposed layout only. All images and dimensions are not intended to form part of any agreement. Dimensions and layouts are not exact. Actual useable room sizes and floor space may vary from stated floor area. Furniture and fixture representations are for illustration purposes only and do not reflect electrical plans for the suite. Suites are sold unfurnished. Features, finishes, sizes and specifications are subject to change without notice. \*Unit sizes and balcony / terrace sizes vary based on floor and suite location. E. & O. E.



# SEA

1 BED + DEN / 2 BATH

INDOOR 652 SF / OUTDOOR 45 SF / TOTAL 697 SF

**OLIVE**  
RESIDENCES



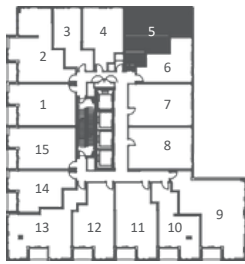
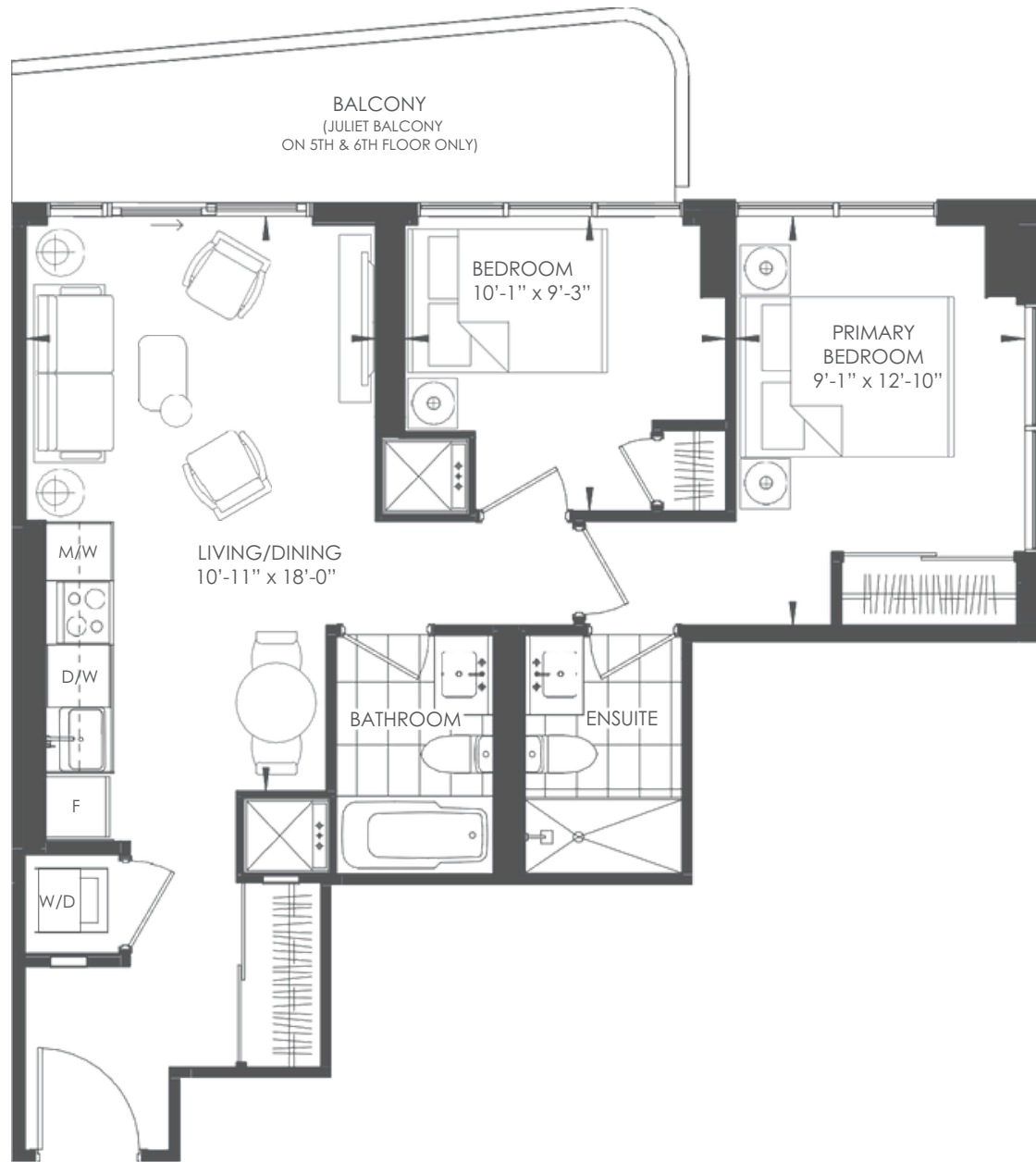
Floor plans are intended to give a general indication of the proposed layout only. All images and dimensions are not intended to form part of any agreement. Dimensions and layouts are not exact. Actual useable room sizes and floor space may vary from stated floor area. Furniture and fixture representations are for illustration purposes only and do not reflect electrical plans for the suite. Suites are sold unfurnished. Features, finishes, sizes and specifications are subject to change without notice. \*Unit sizes and balcony / terrace sizes vary based on floor and suite location. E. & O. E.

# PINE

2 BED / 2 BATH

INDOOR 688 SF / OUTDOOR 0-101 SF / TOTAL 688-789 SF

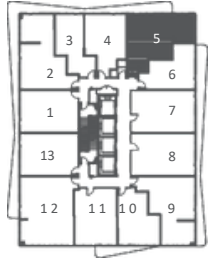
**OLIVE**  
RESIDENCES



FLOOR: 5



FLOOR: 6



FLOORS: 7-32



Floor plans are intended to give a general indication of the proposed layout only. All images and dimensions are not intended to form part of any agreement. Dimensions and layouts are not exact. Actual useable room sizes and floor space may vary from stated floor area. Furniture and fixture representations are for illustration purposes only and do not reflect electrical plans for the suite. Suites are sold unfurnished. Features, finishes, sizes and specifications are subject to change without notice. \*Unit sizes and balcony / terrace sizes vary based on floor and suite location. E. & O. E.



# JUNIPER

2 BED / 2 BATH

INDOOR 718 SF / OUTDOOR 262 SF / TOTAL 980 SF

OLIVE  
RESIDENCES



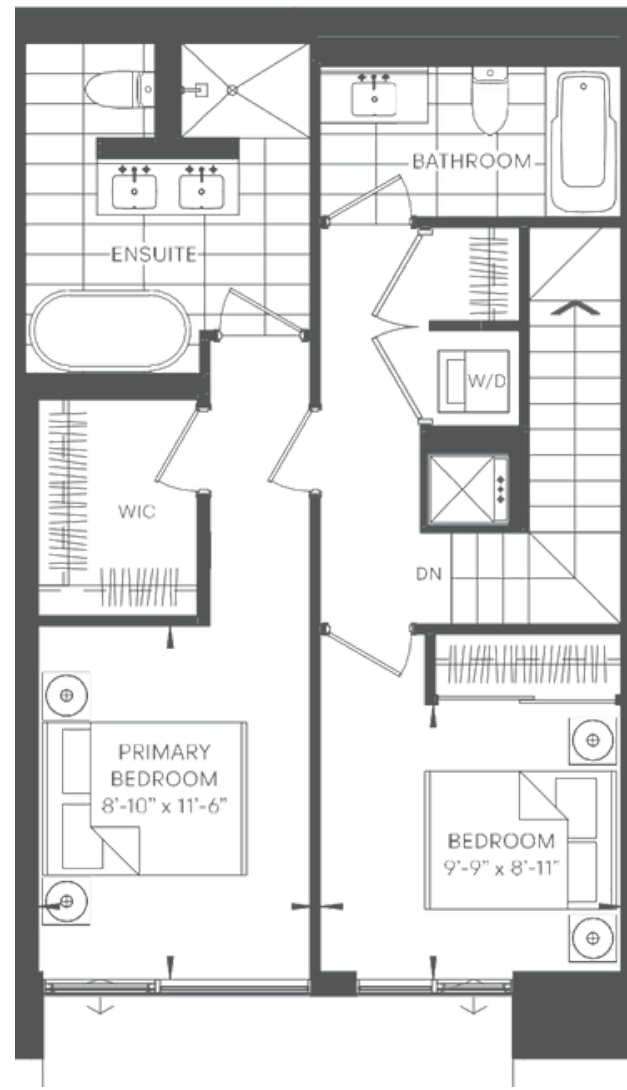
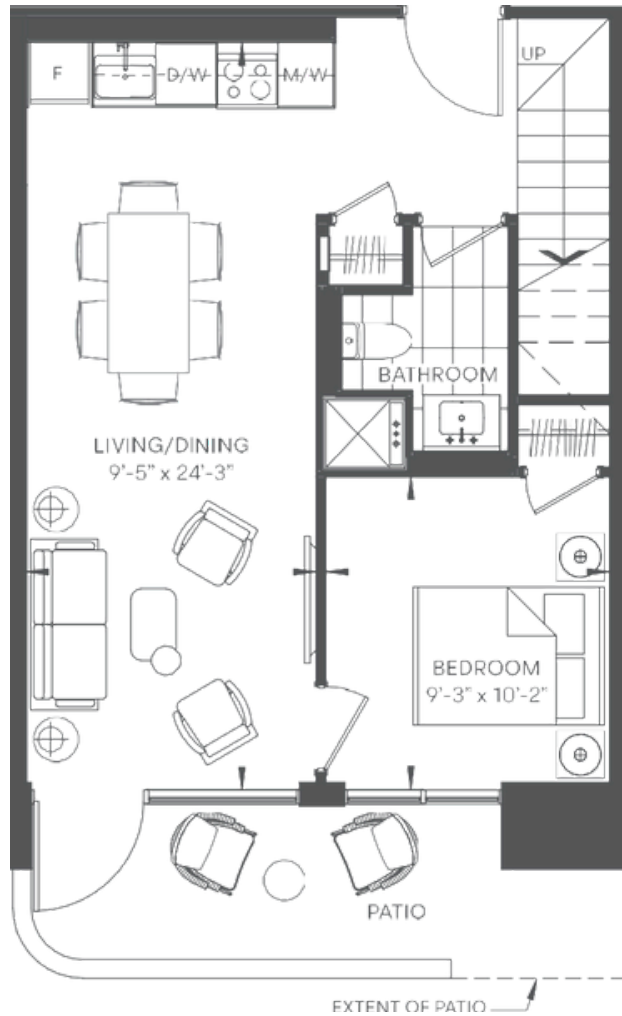
Floor plans are intended to give a general indication of the proposed layout only. All images and dimensions are not intended to form part of any agreement. Dimensions and layouts are not exact. Actual useable room sizes and floor space may vary from stated floor area. Furniture and fixture representations are for illustration purposes only and do not reflect electrical plans for the suite. Suites are sold unfurnished. Features, finishes, sizes and specifications are subject to change without notice. \*Unit sizes and balcony / terrace sizes vary based on floor and suite location. E. & O. E.

# TOWNHOME 1, 2 & 3

**OLIVE**  
RESIDENCES

3 BED / 2.5 BATH

INDOOR 1,180 SF / OUTDOOR 103 SF / TOTAL 1,283 SF



Floor plans are intended to give a general indication of the proposed layout only. All images and dimensions are not intended to form part of any agreement. Dimensions and layouts are not exact. Actual useable room sizes and usable floor space may vary from stated floor area. Furniture and fixture representations are for illustration purposes only and do not reflect electrical plans for the suite. Suites are sold unfurnished. Features, finishes, sizes and specifications are subject to change without notice. \*Unit sizes and balcony / terrace sizes vary based on floor and suite location. E. & O. E.

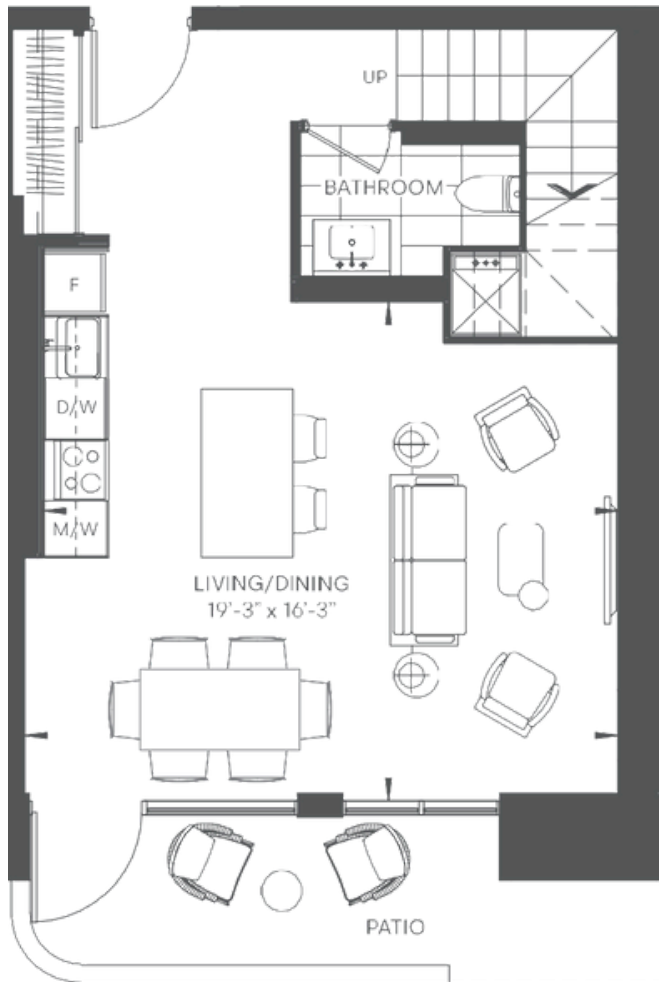


# TOWNHOME 4

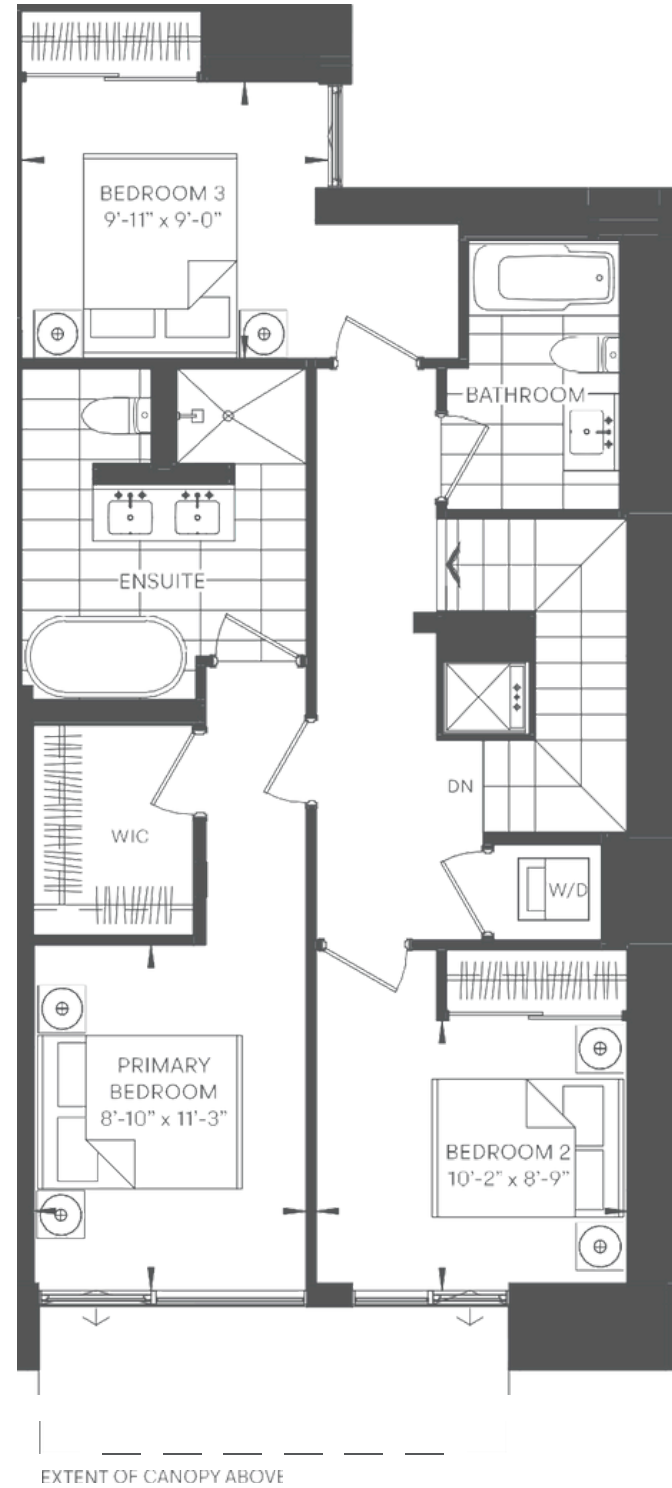
**OLIVE**  
RESIDENCES

3 BED / 2.5 BATH

INDOOR 1,430 SF / OUTDOOR 102 SF / TOTAL 1,532 SF



LOWER



UPPER

Floor plans are intended to give a general indication of the proposed layout only. All images and dimensions are not intended to form part of any agreement. Dimensions and layouts are not exact. Actual useable room sizes and usable floor space may vary from stated floor area. Furniture and fixture representations are for illustration purposes only and do not reflect electrical plans for the suite. Suites are sold unfurnished. Features, finishes, sizes and specifications are subject to change without notice. \*Unit sizes and balcony / terrace sizes vary based on floor and suite location. E. & O. E.

