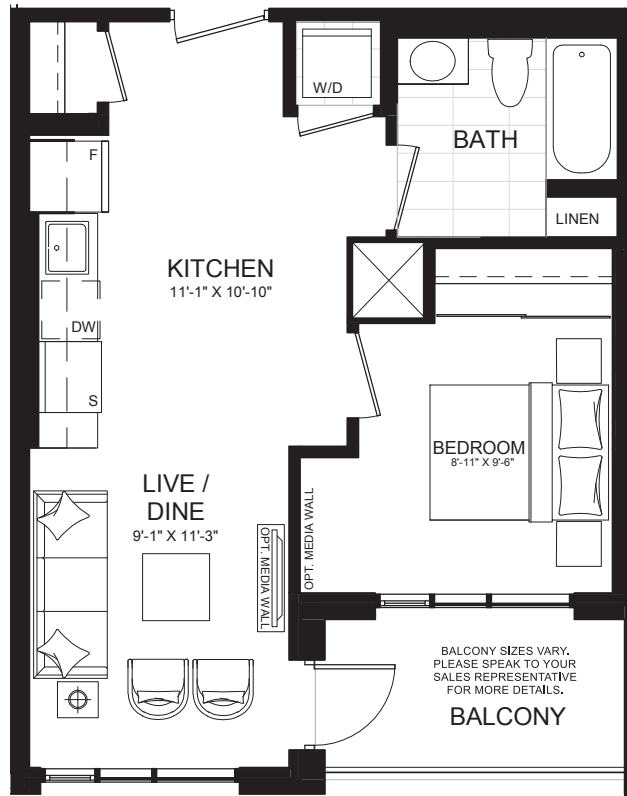


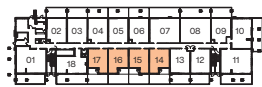
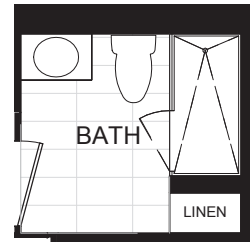


# ONE BEDROOM

## Mile & Creek PHASE 3



OPTIONAL SHOWER



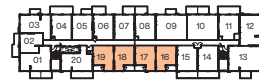
1st FLOOR - BLDG E



2nd FLOOR - BLDG E



3rd FLOOR - BLDG E



4th FLOOR - BLDG E



5th-6th FLOOR - BLDG E



7th FLOOR - BLDG E



8th FLOOR - BLDG E



# E10A/E10B

Interior: 541 S.F. / Exterior: 55-301 S.F. / Total: 596-842 S.F.

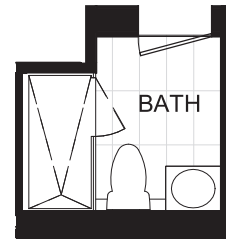
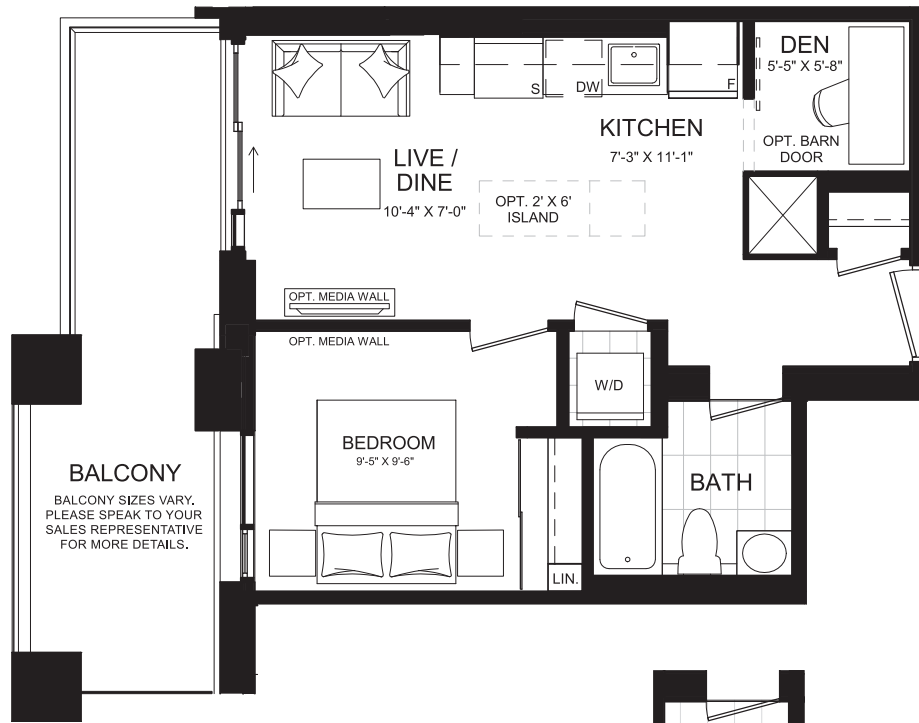
Ceiling Height E10A: 10' (Floors 1 & 8) / E10B: 9' (Floors 2-7)

All illustrations are artist's concept. Materials, specifications, floor plans, terms and conditions are subject to change without notice. All room sizes are approximate dimensions. Actual square footage and usable floor space may vary slightly from those stated. Ceilings and walls may be modified to accommodate the mechanical and electrical systems. The unit shown may be the reverse of the unit built. E. & O.E.

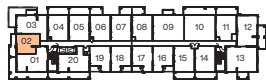


# ONE BEDROOM + DEN

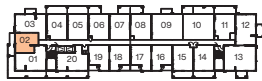
## Mile & Creek PHASE 3



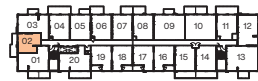
OPTIONAL SHOWER



2nd FLOOR - BLDG E



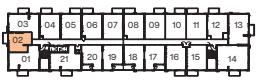
3rd FLOOR - BLDG E



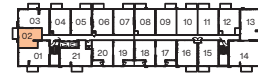
4th FLOOR - BLDG E



5th-6th FLOOR - BLDG E



7th FLOOR - BLDG E



8th FLOOR - BLDG E



# E1DA/E1DB

Interior: 504 S.F. / Exterior: 54-143 S.F. / Total: 558-647 S.F.

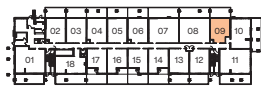
Ceiling Height E1DA: 9' (Floors 2-7) / E1DB: 10' (Floor 8)

All illustrations are artist's concept. Materials, specifications, floor plans, terms and conditions are subject to change without notice. All room sizes are approximate dimensions. Actual square footage and usable floor space may vary slightly from those stated. Ceilings and walls may be modified to accommodate the mechanical and electrical systems. The unit shown may be the reverse of the unit built. E. & O.E.



# ONE BEDROOM + DEN

## Mile & Creek PHASE 3



# E1DC/E1DD

Interior: 556 S.F. / Exterior: 54-228 S.F. / Total: 610-784 S.F.

Ceiling Height E1DC: 10' (Floors 1 & 8) / E1DD: 9' (Floors 2-7)

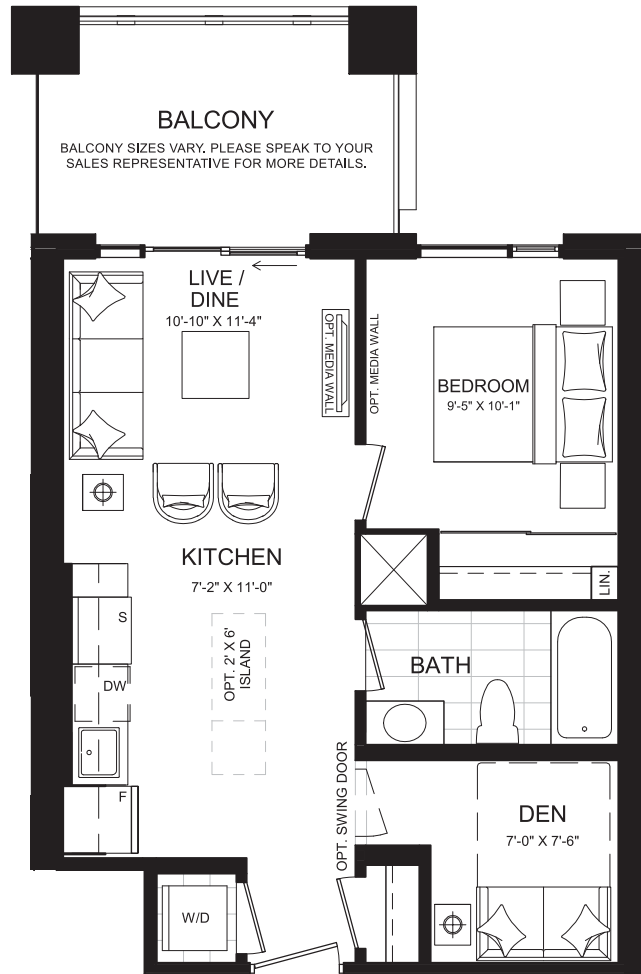
All illustrations are artist's concept. Materials, specifications, floor plans, terms and conditions are subject to change without notice. All room sizes are approximate dimensions. Actual square footage and usable floor space may vary slightly from those stated. Ceilings and walls may be modified to accommodate the mechanical and electrical systems. The unit shown may be the reverse of the unit built. E. & O.E.



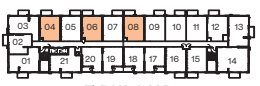
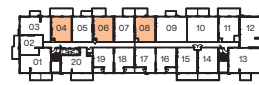
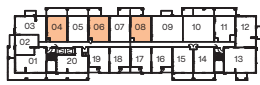
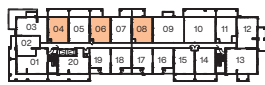
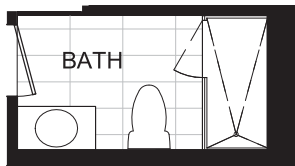
# Mile & Creek

PHASE 3

# ONE BEDROOM + DEN



OPTIONAL SHOWER



# E1DE/E1DF

Interior: 594 S.F. / Exterior: 53-228 S.F. / Total: 647-822 S.F.

Ceiling Height E1DE: 10' (Floors 1 & 8) / E1DF: 9' (Floors 2-7)

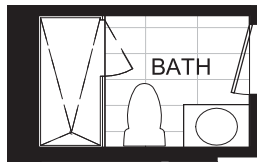
All illustrations are artist's concept. Materials, specifications, floor plans, terms and conditions are subject to change without notice. All room sizes are approximate dimensions. Actual square footage and usable floor space may vary slightly from those stated. Ceilings and walls may be modified to accommodate the mechanical and electrical systems. The unit shown may be the reverse of the unit built. E. & O.E.



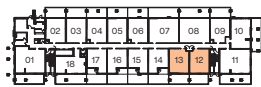
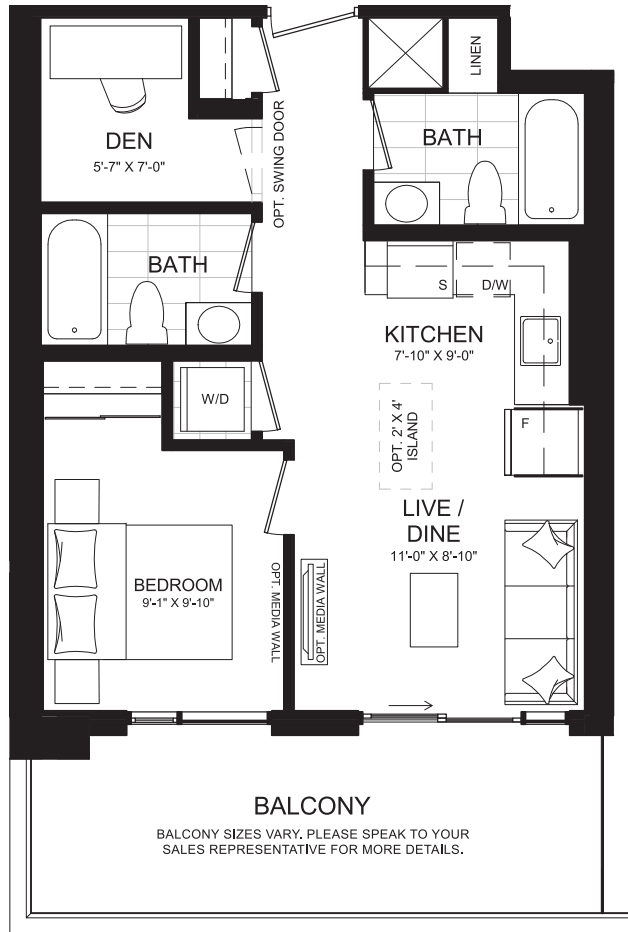
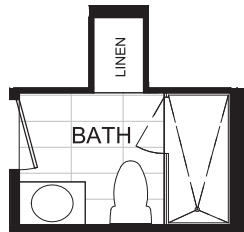
# ONE BEDROOM + DEN

## Mile & Creek PHASE 3

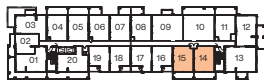
OPTIONAL SHOWER



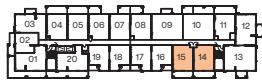
OPTIONAL SHOWER



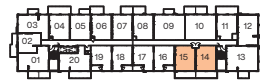
1st FLOOR - BLDG E



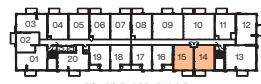
2nd FLOOR - BLDG E



3rd FLOOR - BLDG E



4th FLOOR - BLDG E



5th-6th FLOOR - BLDG E



7th FLOOR - BLDG E



8th FLOOR - BLDG E



# E1DG/E1DH

Interior: 605 S.F. / Exterior: 54-223 S.F. / Total: 659-828 S.F.

Ceiling Height E1DG: 10' (Floors 1 & 8) / E1DH: 9' (Floors 2-7)

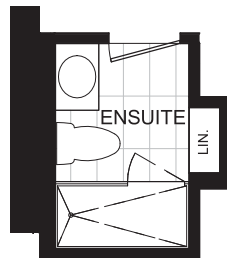
All illustrations are artist's concept. Materials, specifications, floor plans, terms and conditions are subject to change without notice. All room sizes are approximate dimensions. Actual square footage and usable floor space may vary slightly from those stated. Ceilings and walls may be modified to accommodate the mechanical and electrical systems. The unit shown may be the reverse of the unit built. E. & O.E.



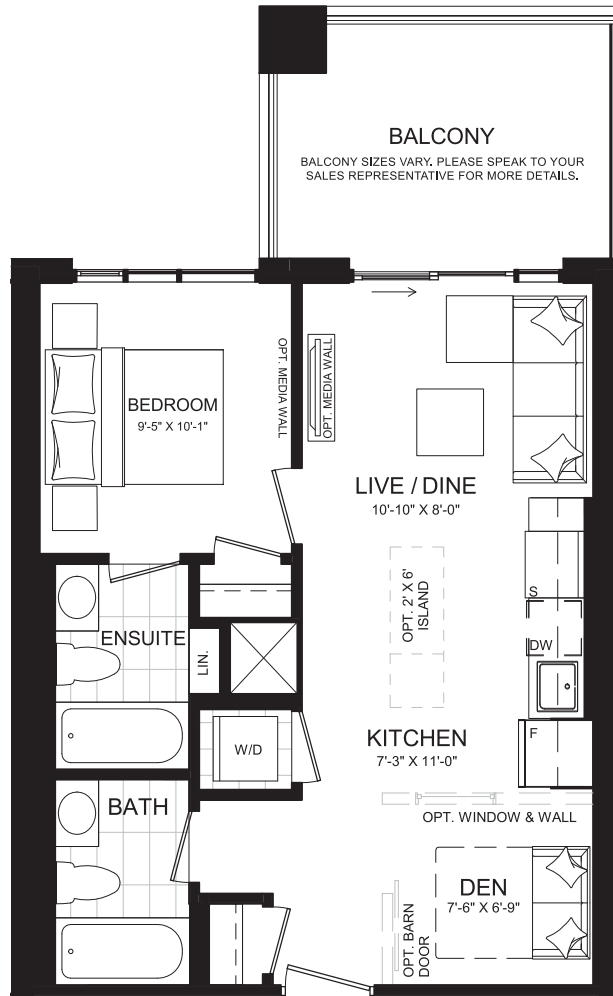
# ONE BEDROOM + DEN

## Mile & Creek PHASE 3

OPTIONAL SHOWER



OPTIONAL SHOWER



1st FLOOR - BLDG E



2nd FLOOR - BLDG E



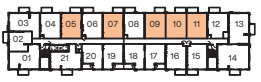
3rd FLOOR - BLDG E



4th FLOOR - BLDG E



5th-6th FLOOR - BLDG E



7th FLOOR - BLDG E



8th FLOOR - BLDG E



# E1DI/E1DJ

Interior: 610 S.F. / Exterior: 53-228 S.F. / Total: 663-838 S.F.

Ceiling Height E1DI: 10' (Floors 1 & 8) / E1DJ: 9' (Floors 2-7)

All illustrations are artist's concept. Materials, specifications, floor plans, terms and conditions are subject to change without notice. All room sizes are approximate dimensions. Actual square footage and usable floor space may vary slightly from those stated. Ceilings and walls may be modified to accommodate the mechanical and electrical systems. The unit shown may be the reverse of the unit built. E. & O.E.



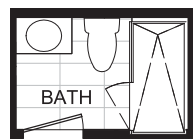
# Mile & Creek

PHASE 3

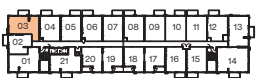
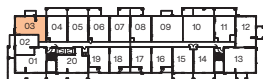
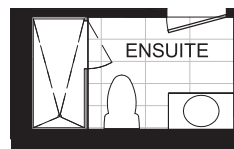
# TWO BEDROOM



OPTIONAL SHOWER



OPTIONAL SHOWER



# E20A/E20B

Interior: 743 S.F. / Exterior: 52 S.F. / Total: 795 S.F.

Ceiling Height E2DC: 9' (Floors 2-7) / E2DD: 10' (Floor 8)

All illustrations are artist's concept. Materials, specifications, floor plans, terms and conditions are subject to change without notice. All room sizes are approximate dimensions. Actual square footage and usable floor space may vary slightly from those stated. Ceilings and walls may be modified to accommodate the mechanical and electrical systems. The unit shown may be the reverse of the unit built. E. & O.E.

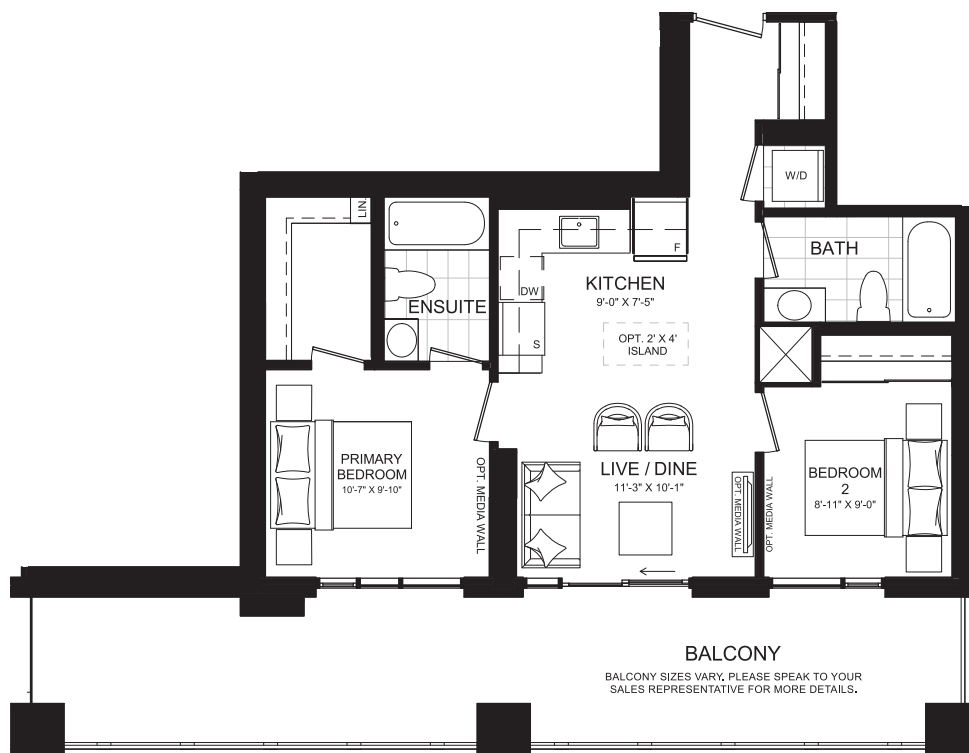




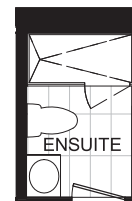
# Mile & Creek

PHASE 3

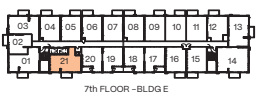
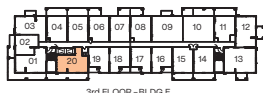
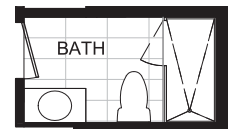
# TWO BEDROOM



OPTIONAL SHOWER



OPTIONAL SHOWER



# E20C/E20D

Interior: 748 S.F. / Exterior: 54-342 S.F. / Total: 802-1090 S.F.

Ceiling Height E20C: 10' (Floors 1 & 8) / E20D: 9' (Floors 2-7)

All illustrations are artist's concept. Materials, specifications, floor plans, terms and conditions are subject to change without notice. All room sizes are approximate dimensions. Actual square footage and usable floor space may vary slightly from those stated. Ceilings and walls may be modified to accommodate the mechanical and electrical systems. The unit shown may be the reverse of the unit built. E. & O.E.

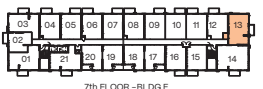
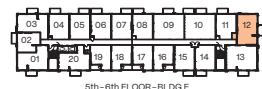
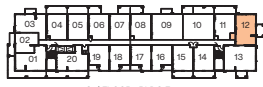
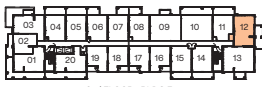
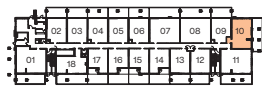
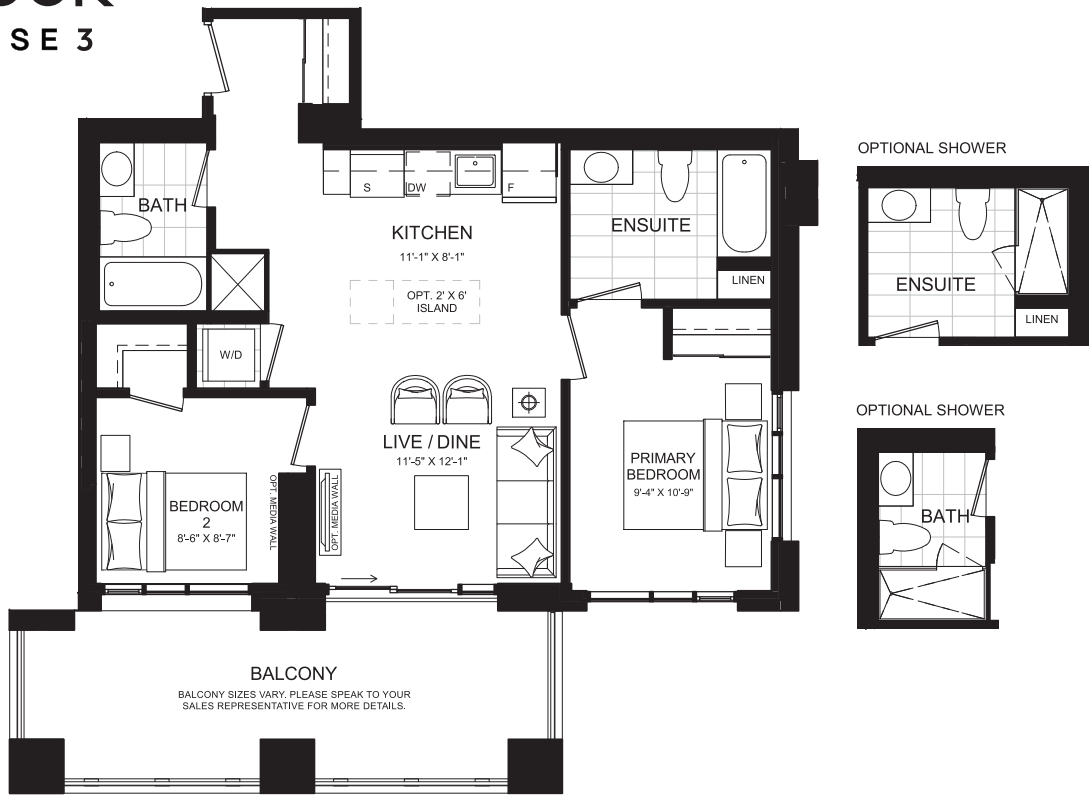






# TWO BEDROOM

## Mile & Creek PHASE 3



# E20F/E20G

Interior: 790 S.F. / Exterior: 53-356 S.F. / Total: 843-1146 S.F.

Ceiling Height E20F: 10' (Floors 1 & 8) / E20G: 9' (Floors 2-7)

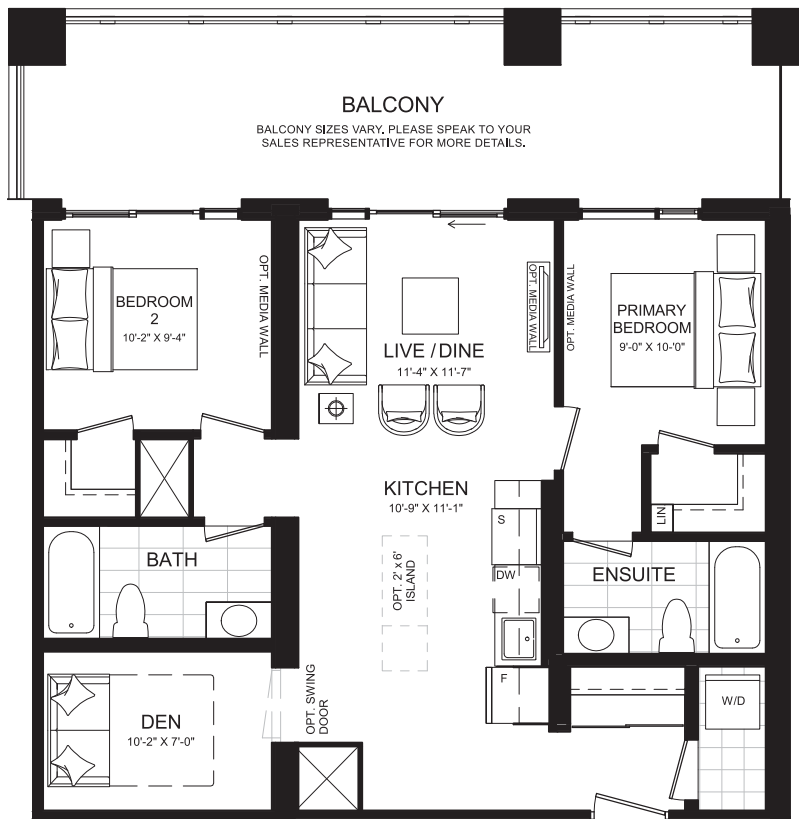
All illustrations are artist's concept. Materials, specifications, floor plans, terms and conditions are subject to change without notice. All room sizes are approximate dimensions. Actual square footage and usable floor space may vary slightly from those stated. Ceilings and walls may be modified to accommodate the mechanical and electrical systems. The unit shown may be the reverse of the unit built. E. & O.E.



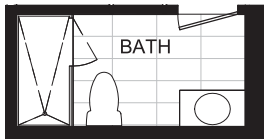


# TWO BEDROOM + DEN

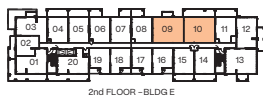
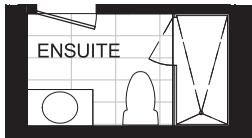
## Mile & Creek PHASE 3



OPTIONAL SHOWER



OPTIONAL SHOWER



# E2DA/E2DB

Interior: 915 S.F. / Exterior: 54-346 S.F. / Total: 969-1261 S.F.

Ceiling Height E2DA: 10' (Floor 1) / E2DB: 9' (Floors 2-6)

All illustrations are artist's concept. Materials, specifications, floor plans, terms and conditions are subject to change without notice. All room sizes are approximate dimensions. Actual square footage and usable floor space may vary slightly from those stated. Ceilings and walls may be modified to accommodate the mechanical and electrical systems. The unit shown may be the reverse of the unit built. E. & O.E.

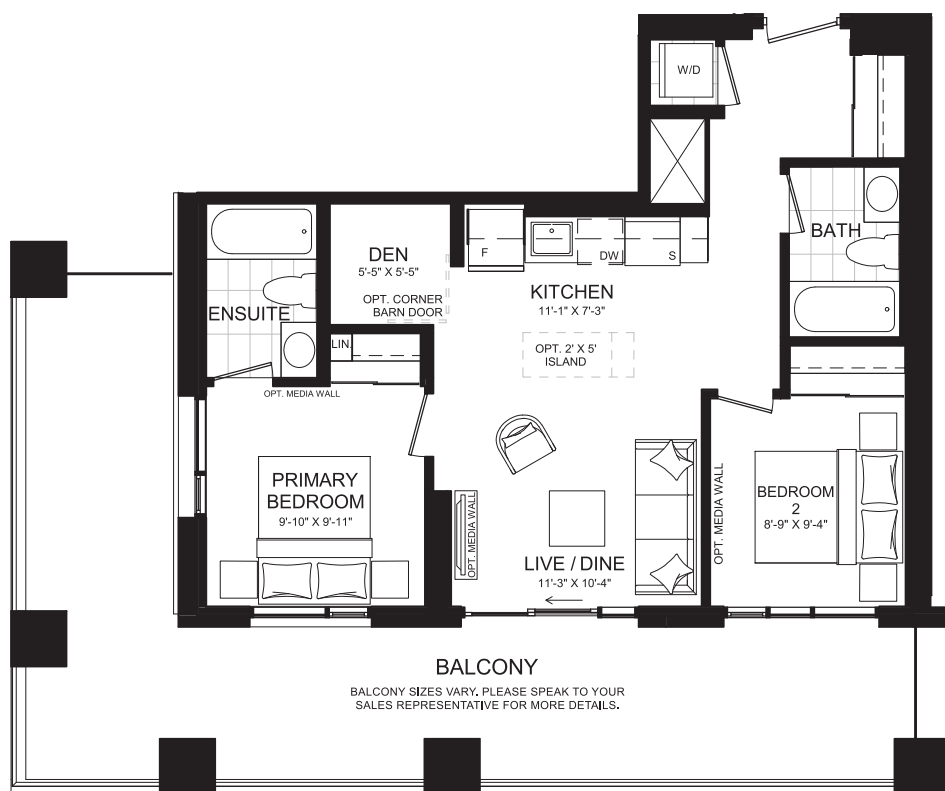




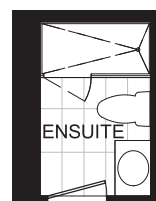
# Mile & Creek

PHASE 3

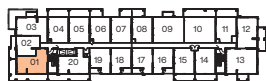
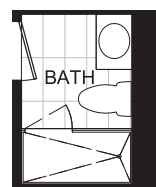
# TWO BEDROOM + DEN



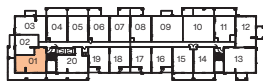
OPTIONAL SHOWER



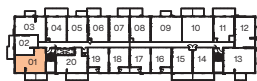
OPTIONAL SHOWER



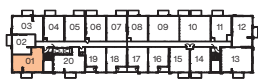
2nd FLOOR - BLDG E



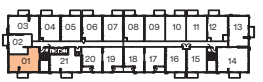
3rd FLOOR - BLDG E



4th FLOOR - BLDG E



5th-6th FLOOR - BLDG E



7th FLOOR - BLDG E



8th FLOOR - BLDG E



# E2DC / E2DD

Interior: 762 S.F. / Exterior: 54-378 S.F. / Total: 816-1140 S.F.

Ceiling Height E2DC: 9' (Floors 2-7) / E2DD: 10' (Floor 8)

All illustrations are artist's concept. Materials, specifications, floor plans, terms and conditions are subject to change without notice. All room sizes are approximate dimensions. Actual square footage and usable floor space may vary slightly from those stated. Ceilings and walls may be modified to accommodate the mechanical and electrical systems. The unit shown may be the reverse of the unit built. E. & O.E.





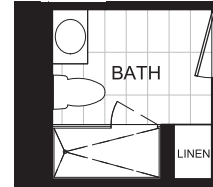
# Mile & Creek

PHASE 3

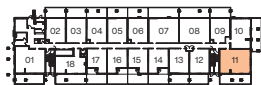
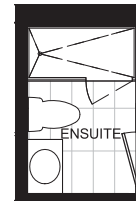
# THREE BEDROOM



OPTIONAL SHOWER



OPTIONAL SHOWER



# E30A/E30B

Interior: 950 S.F. / Exterior: 54-339 S.F. / Total: 1004-1289 S.F.

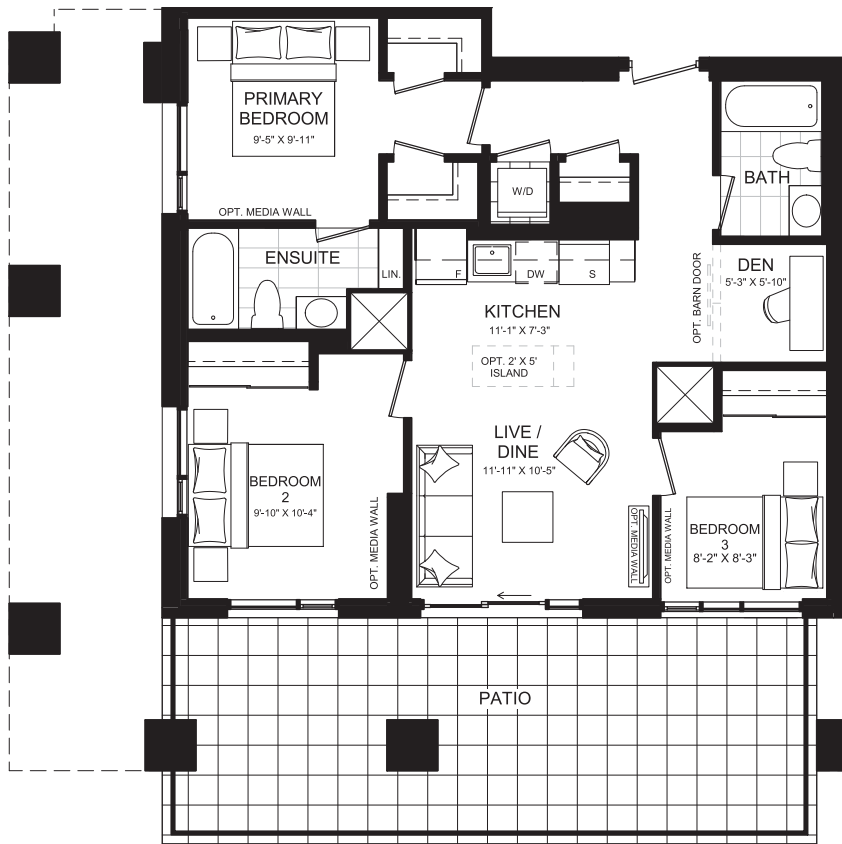
Ceiling Height E30A: 10' (Floors 1 & 8) / E30B: 9' (Floors 2-7)

All illustrations are artist's concept. Materials, specifications, floor plans, terms and conditions are subject to change without notice. All room sizes are approximate dimensions. Actual square footage and usable floor space may vary slightly from those stated. Ceilings and walls may be modified to accommodate the mechanical and electrical systems. The unit shown may be the reverse of the unit built. E. & O.E.

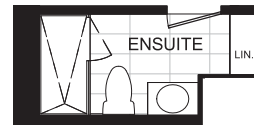


Mile & Creek  
PHASE 3

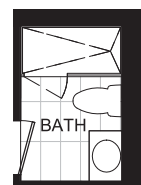
THREE  
BEDROOM + DEN



OPTIONAL SHOWER



OPTIONAL SHOWER



E3DA

Interior: 981 S.F.  
Exterior: 318 S.F.  
Total: 1299 S.F.

All illustrations are artist's concept. Materials, specifications, floor plans, terms and conditions are subject to change without notice. All room sizes are approximate dimensions. Actual square footage and usable floor space may vary slightly from those stated. Ceilings and walls may be modified to accommodate the mechanical and electrical systems. The unit shown may be the reverse of the unit built. E. & O.E.