



Duffy
ELEV B • 1656 SQ. FT.

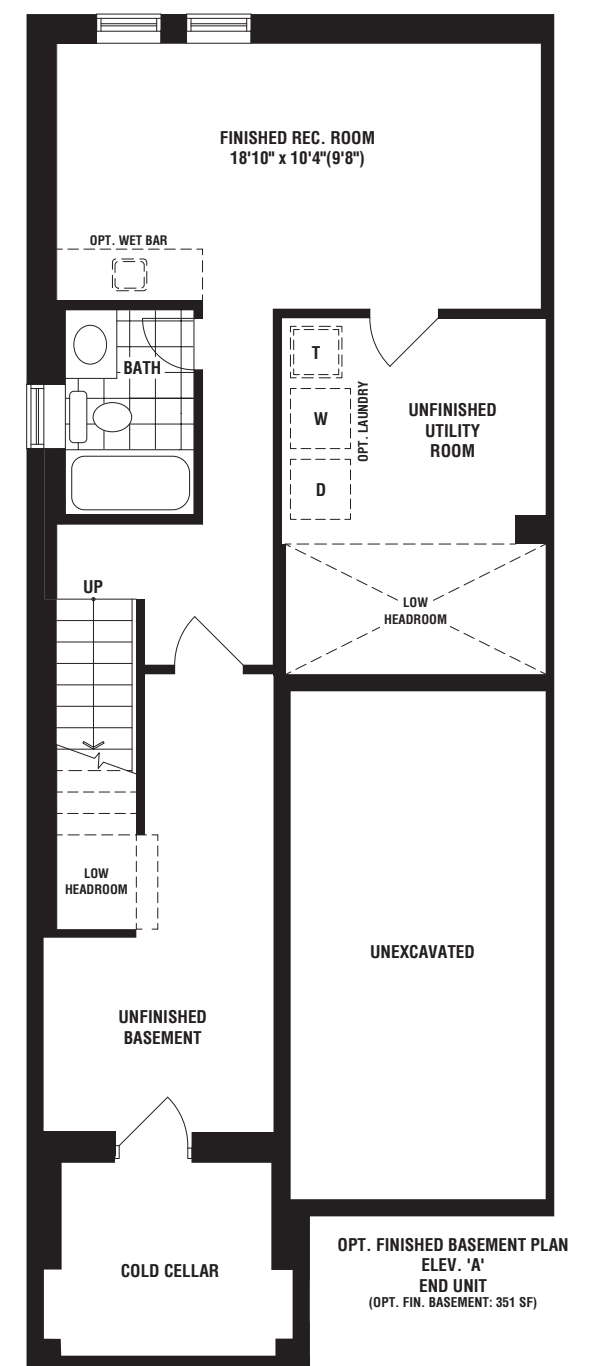
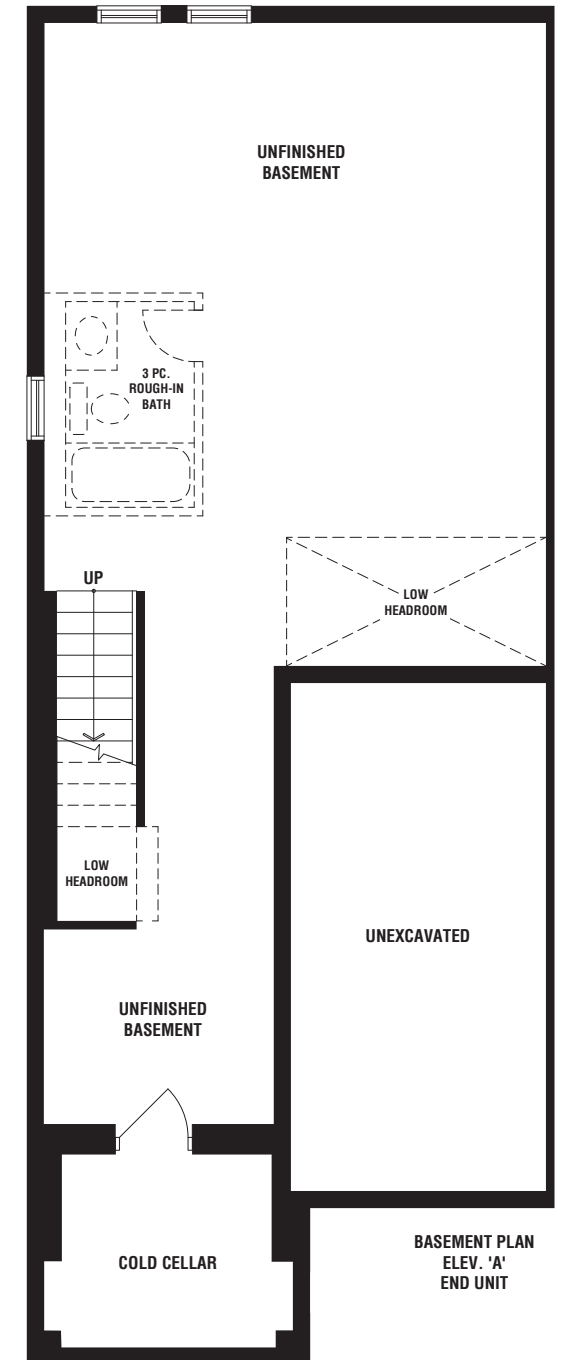
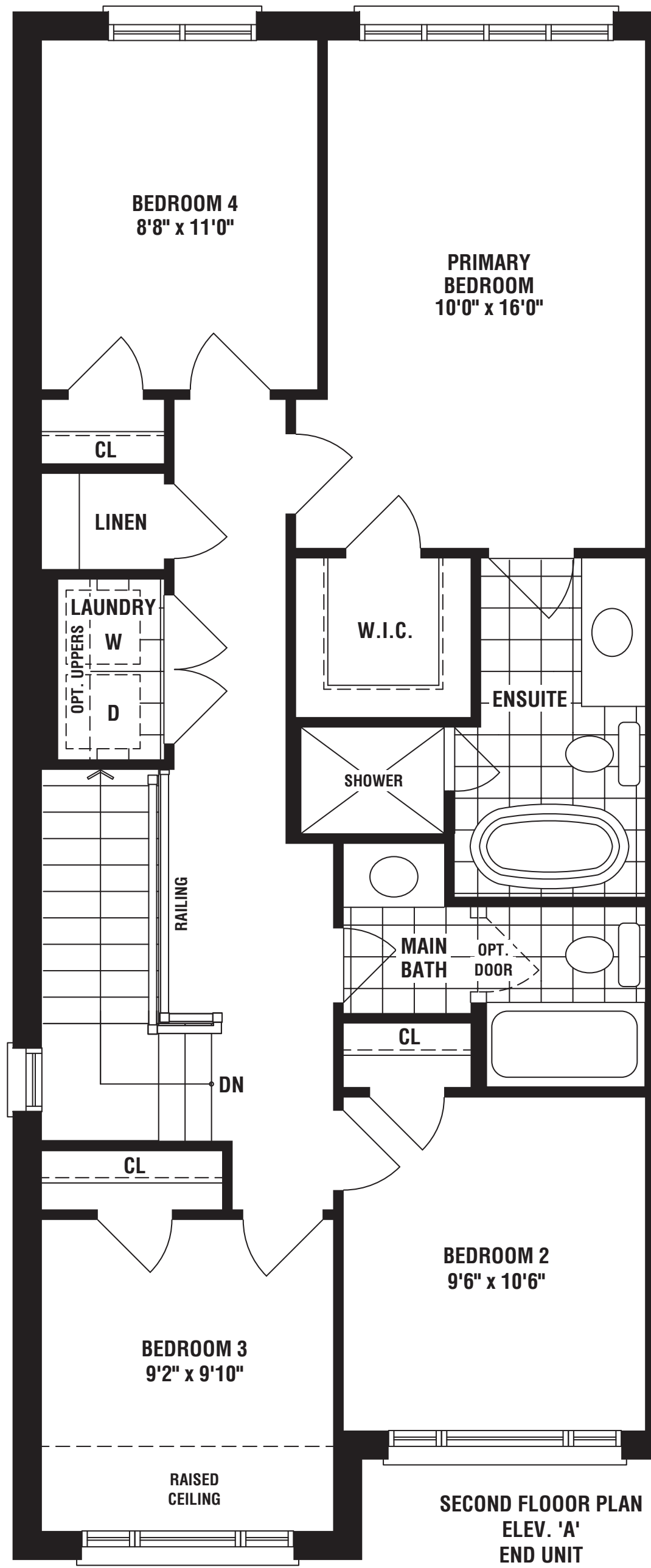
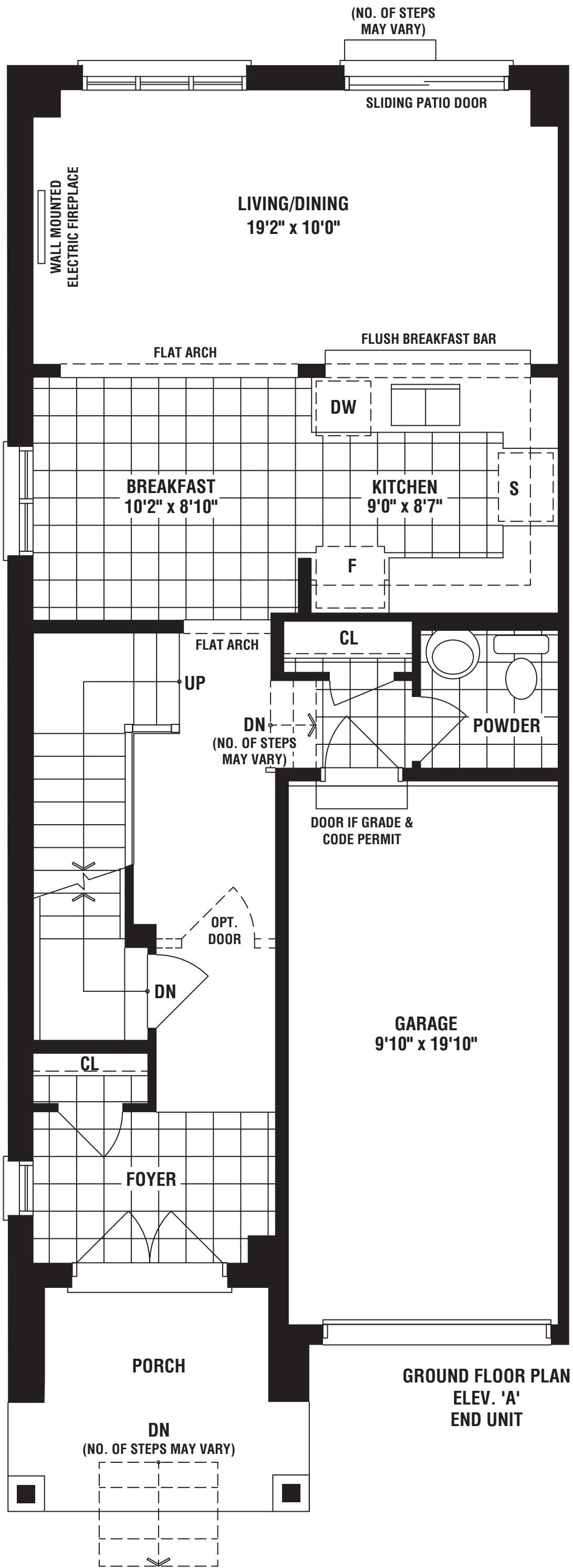


Duffy
ELEV A • 1650 SQ. FT.





Duffy (End)
ELEV A • 1697 SQ. FT.





Rodin

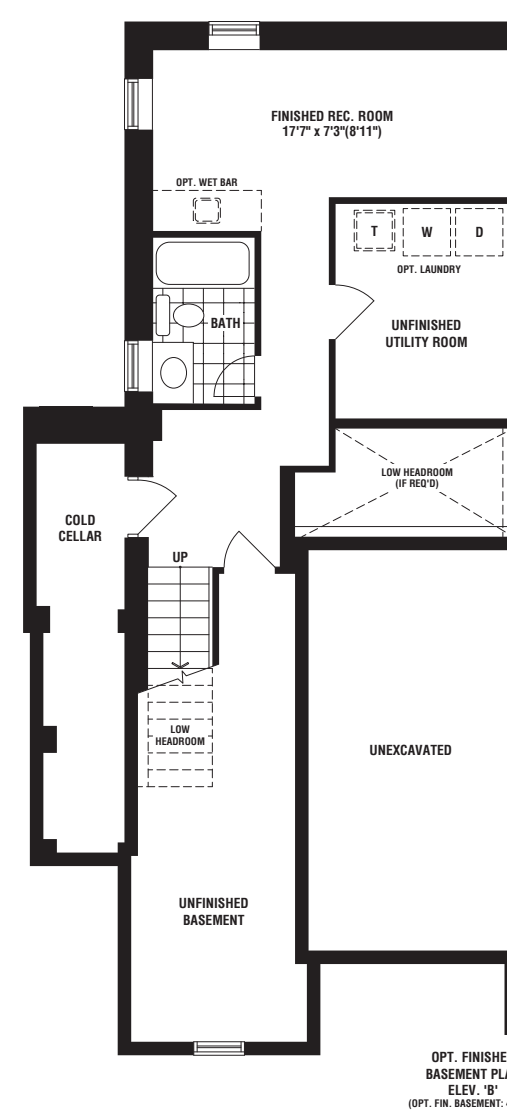
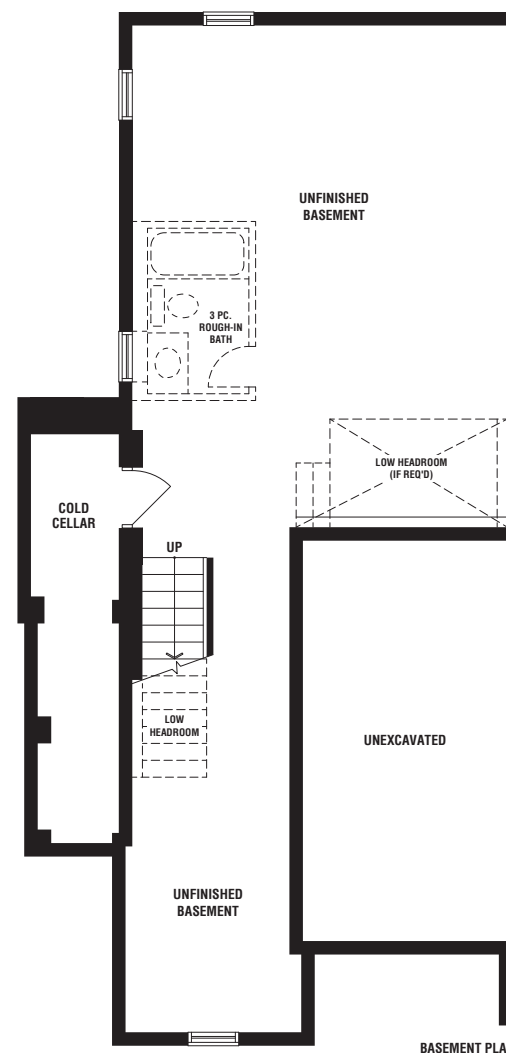
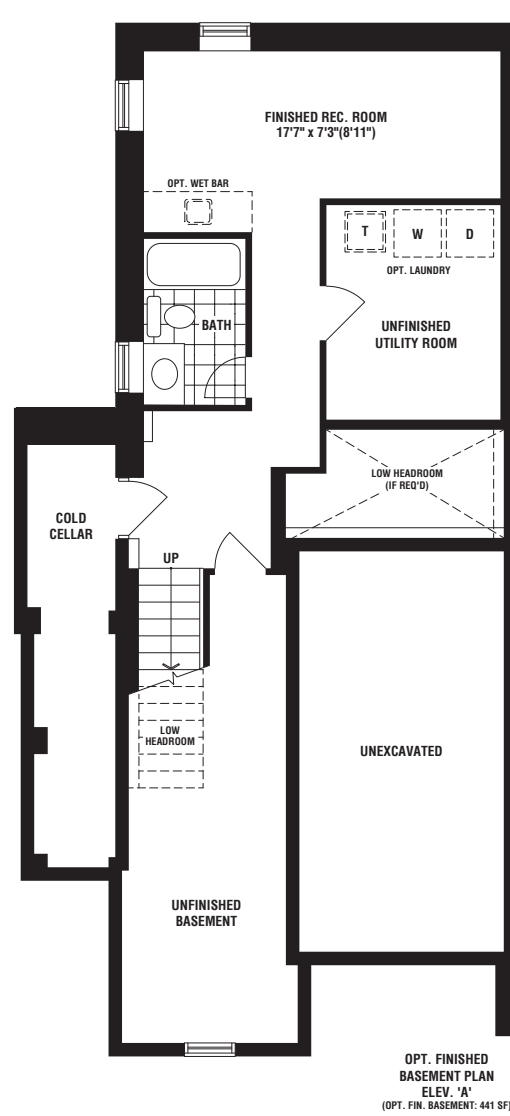
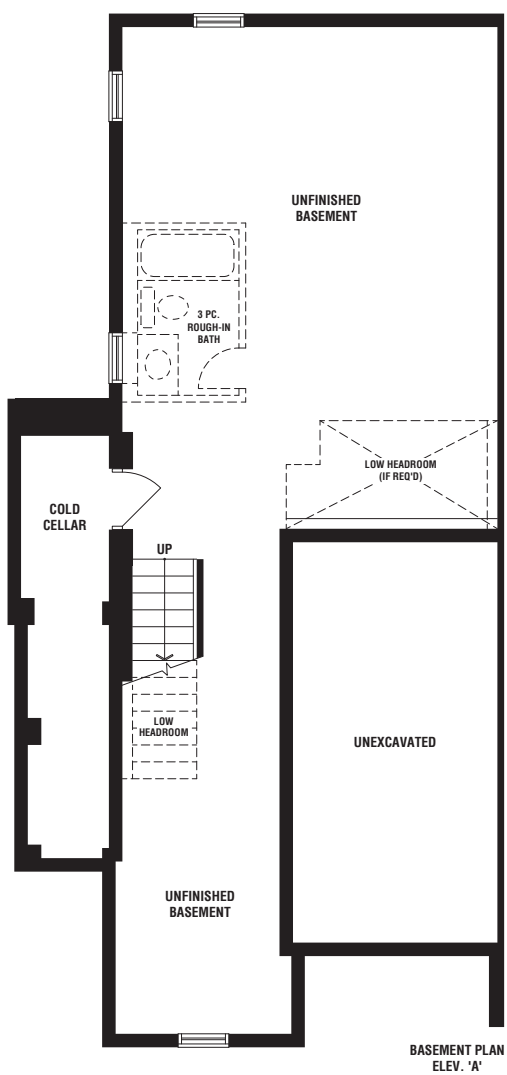
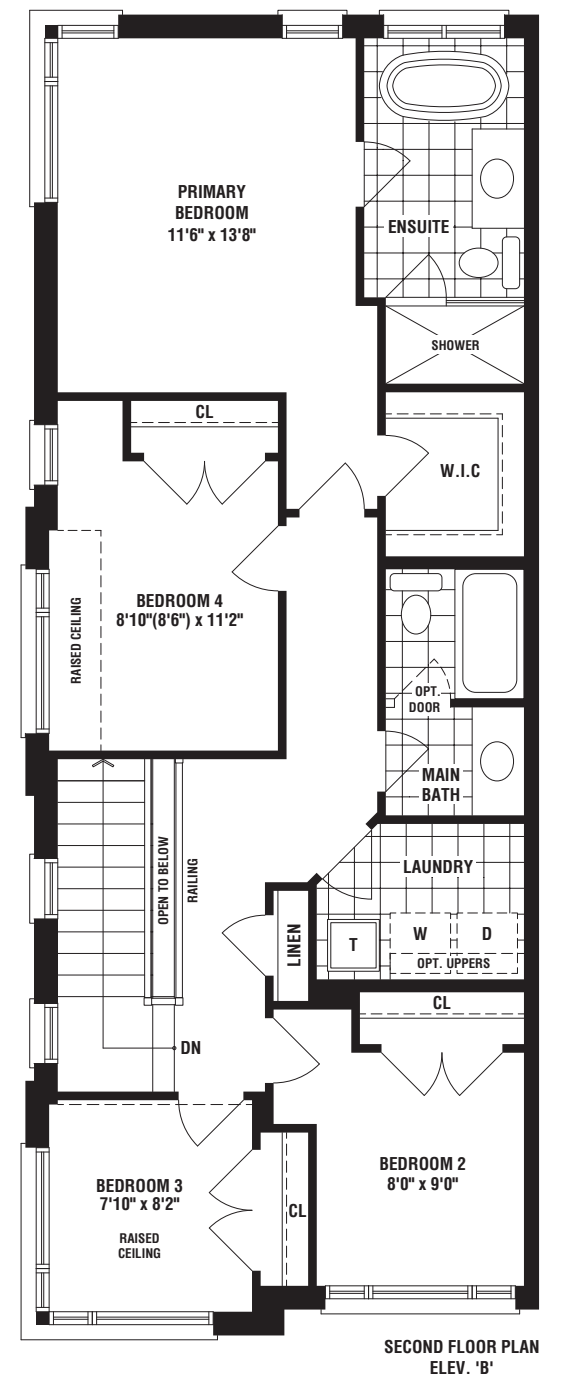
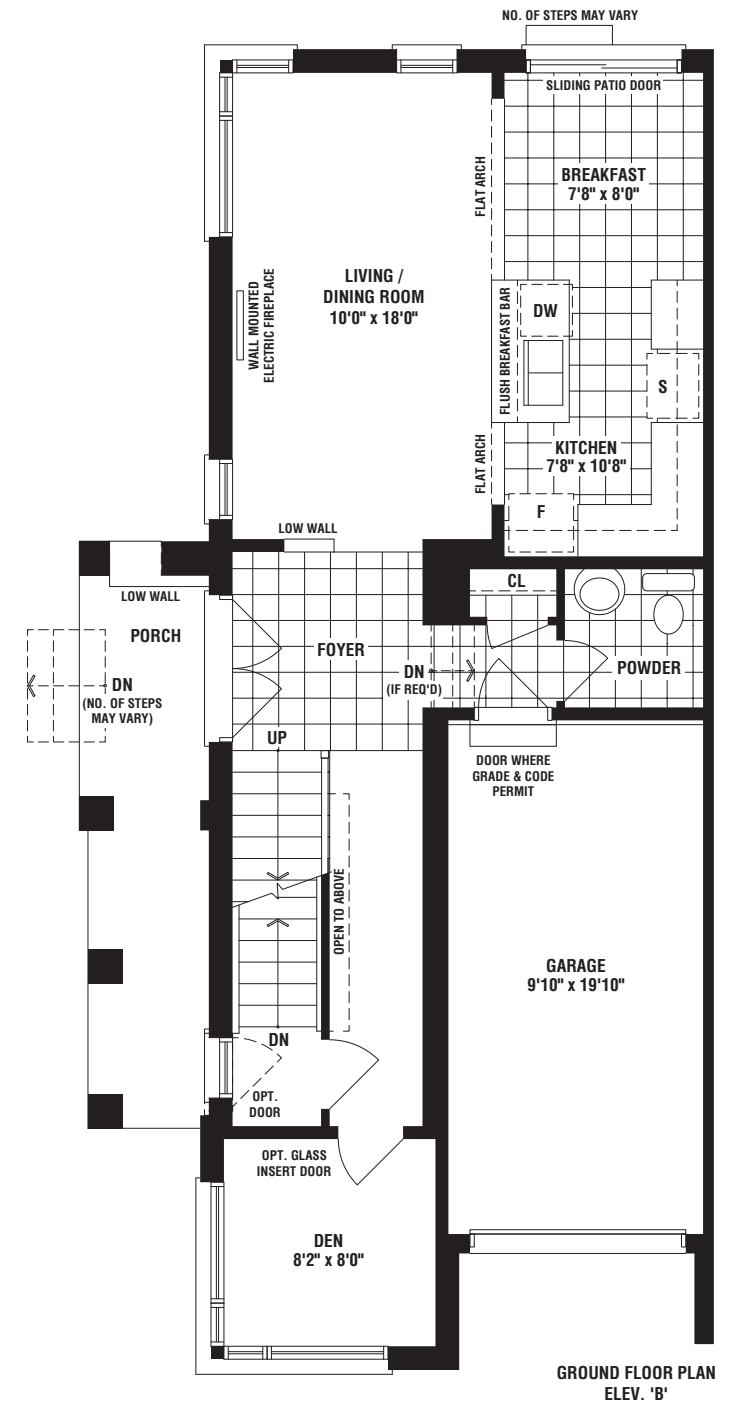
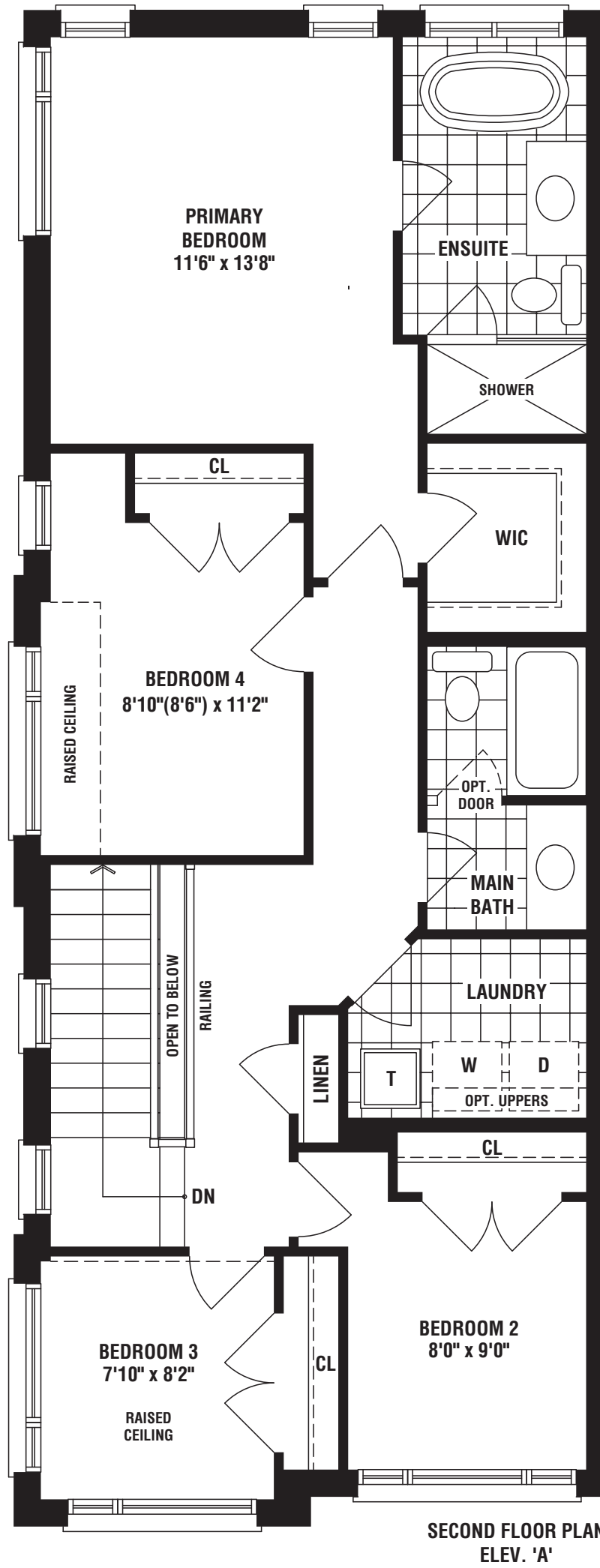
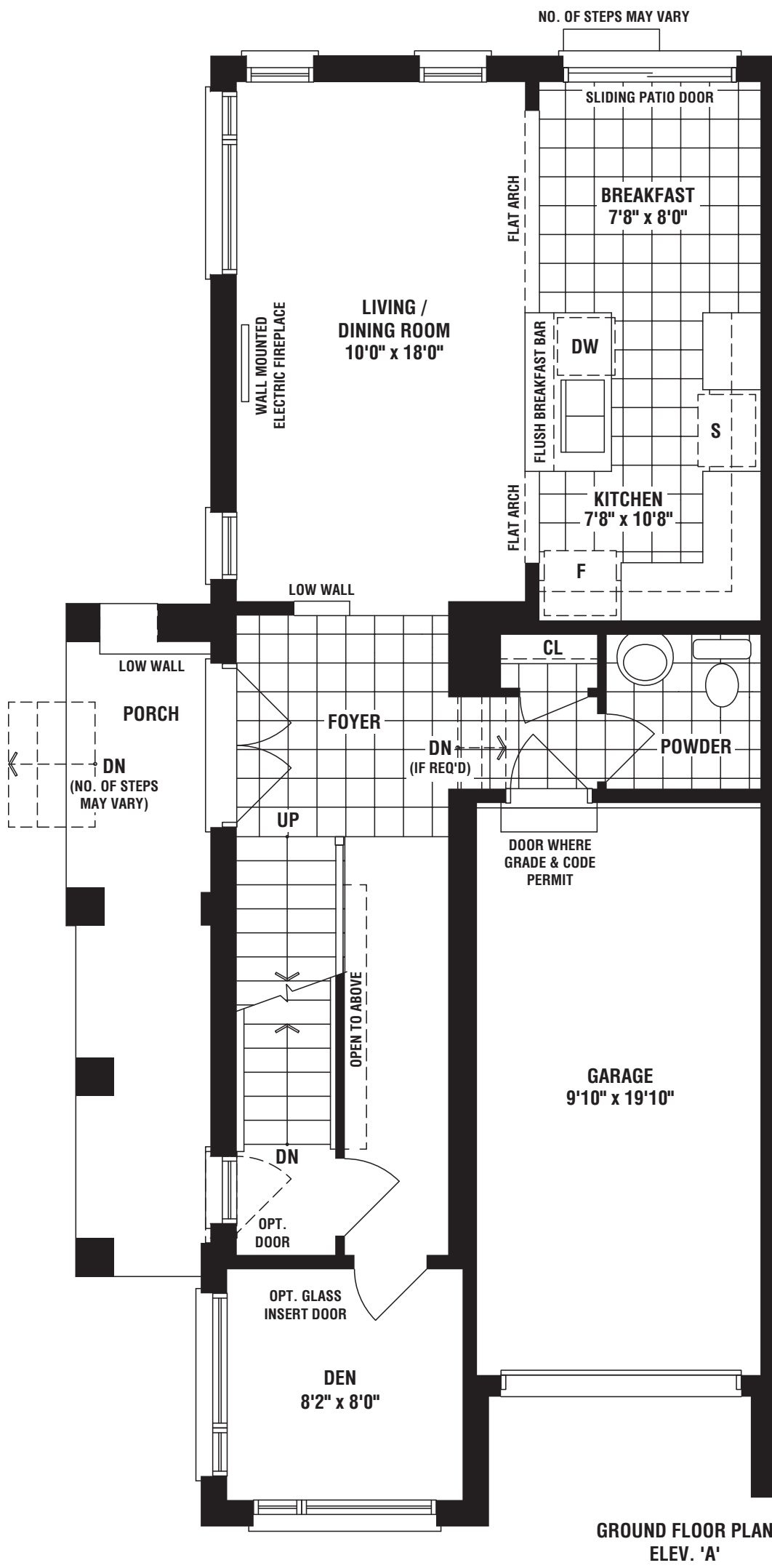
ELEV B • 1727 SQ. FT.



Rodin

ELEV A • 1727 SQ. FT.





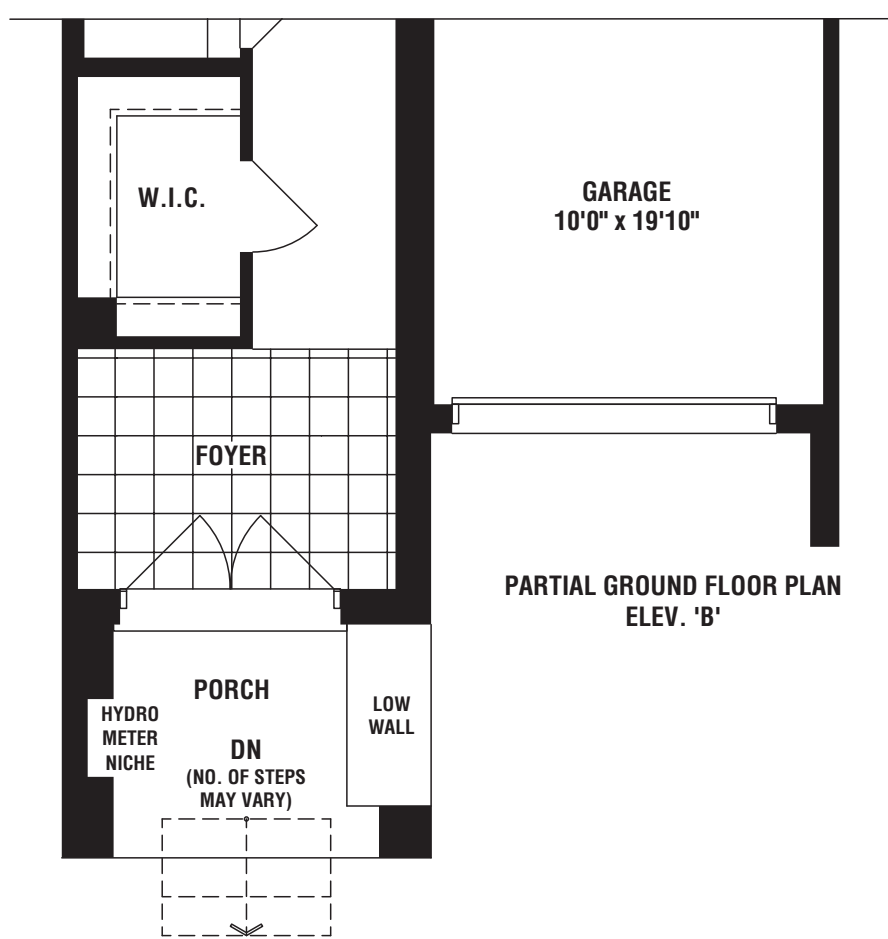
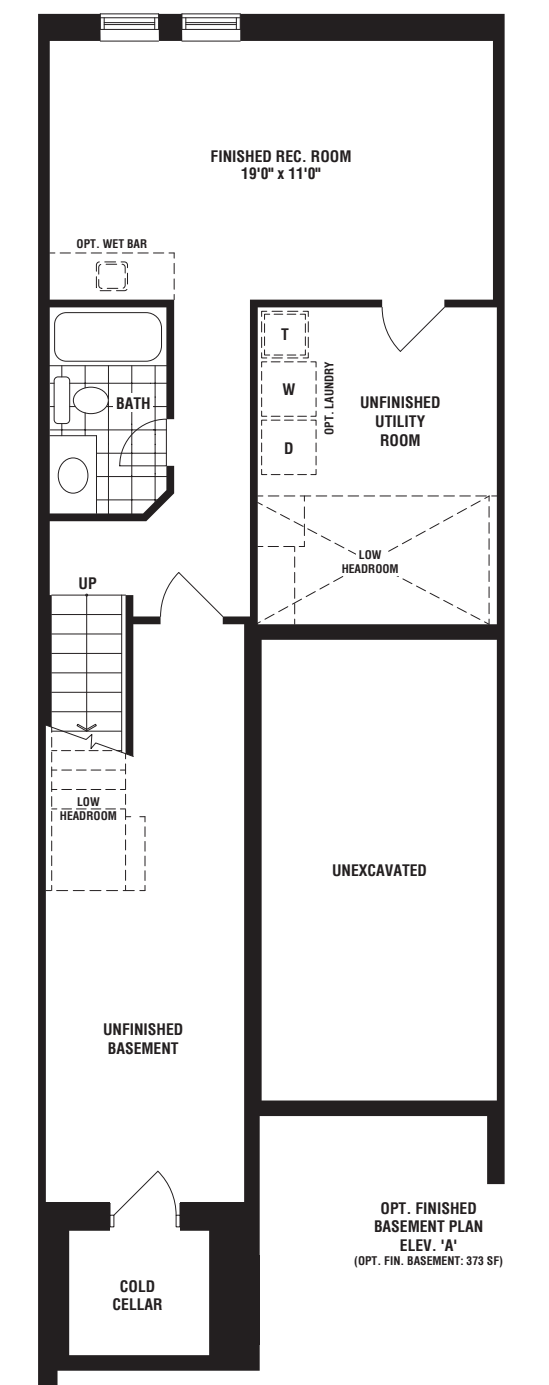
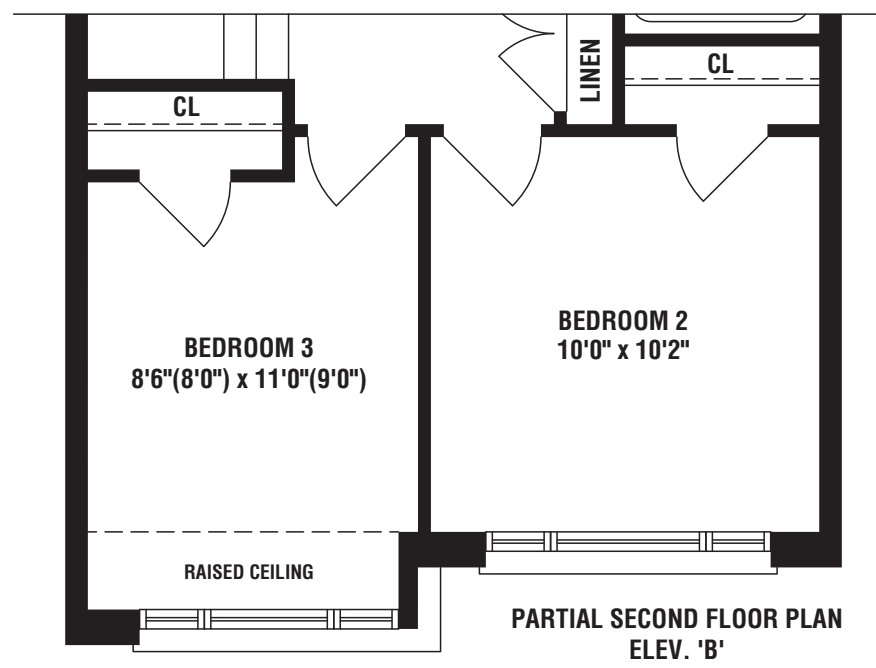
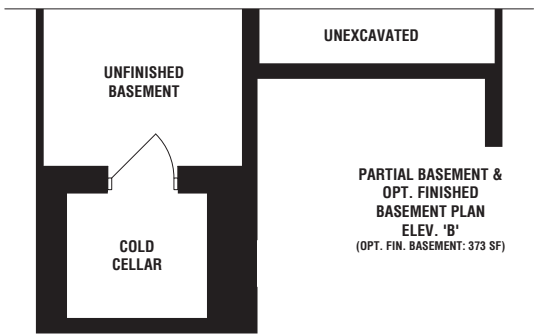
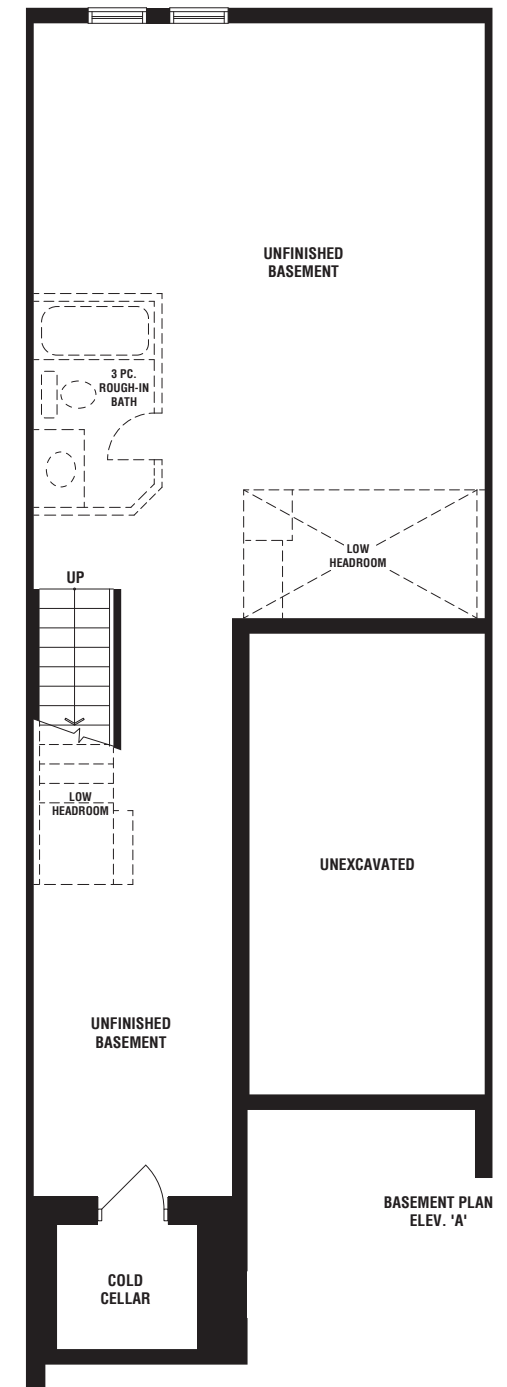
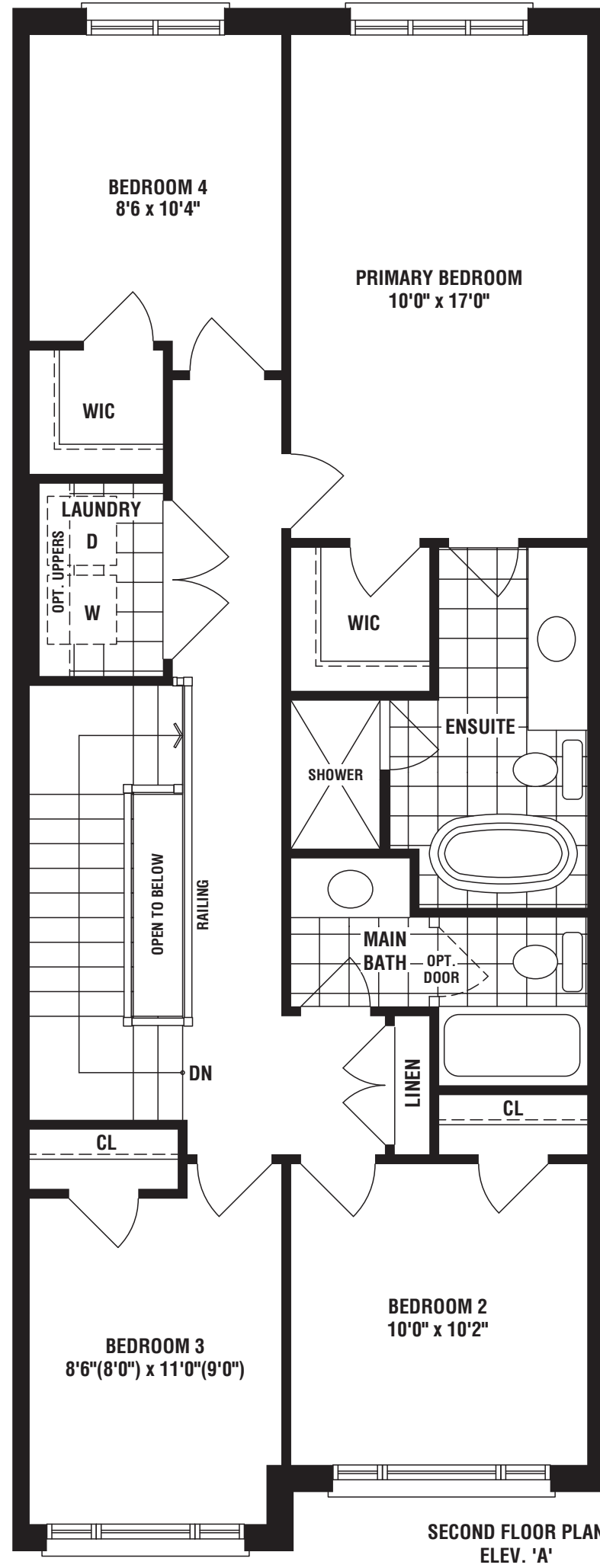
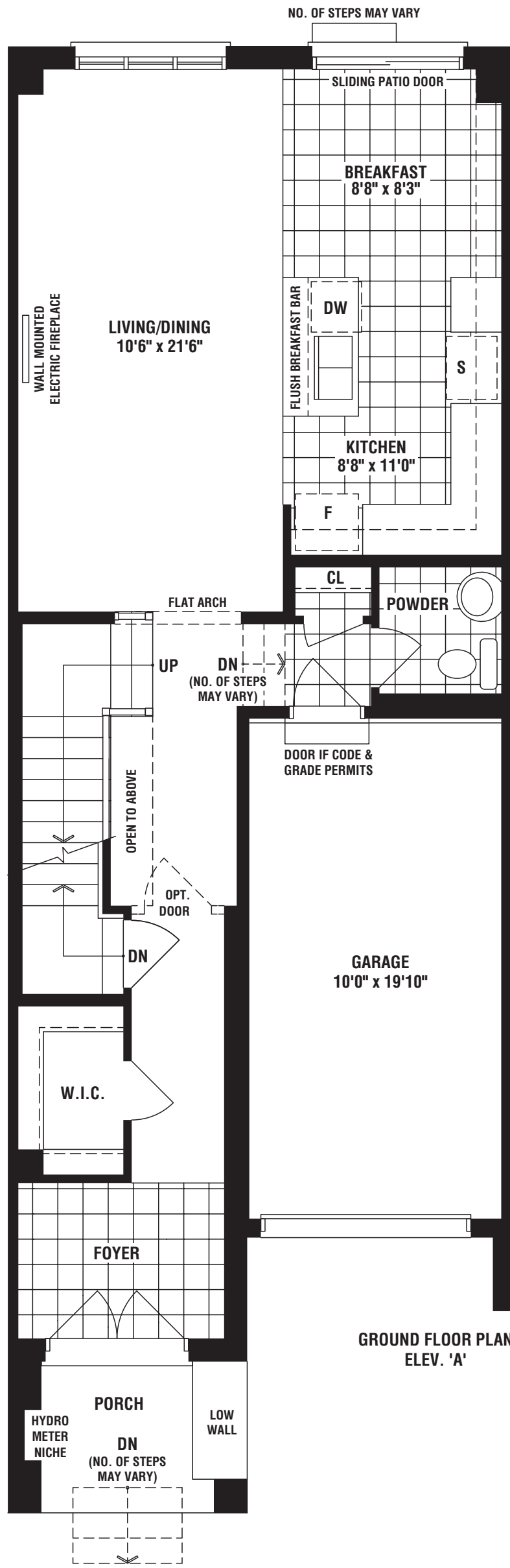


Chase
ELEV B • 1787 SQ. FT.



Chase
ELEV A • 1787 SQ. FT.





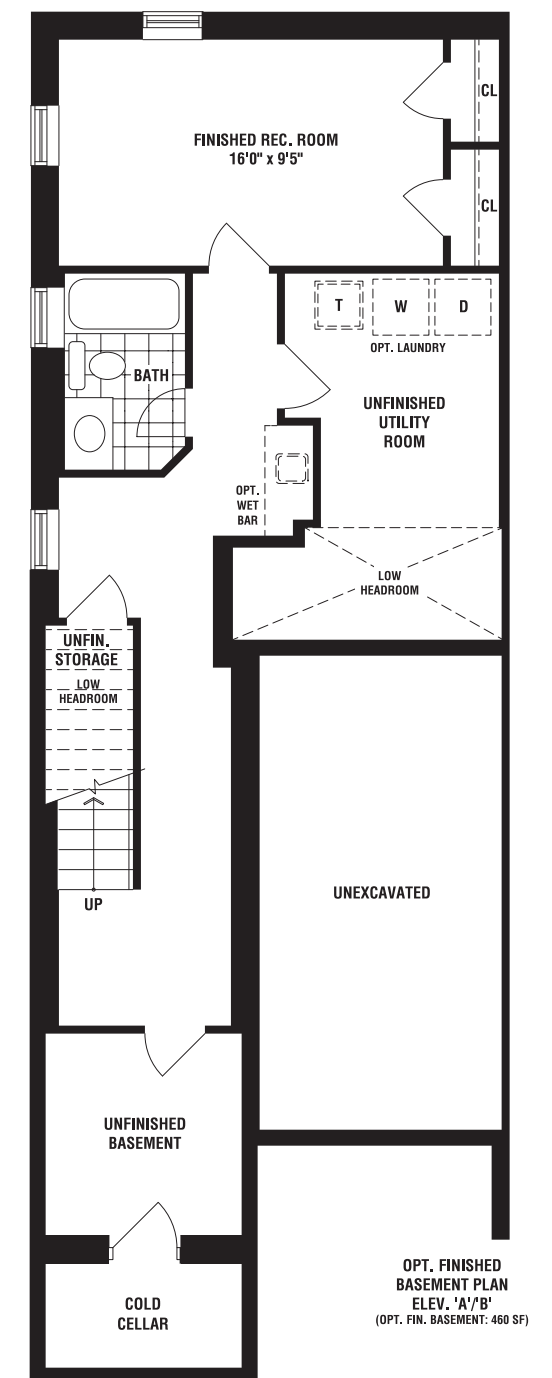
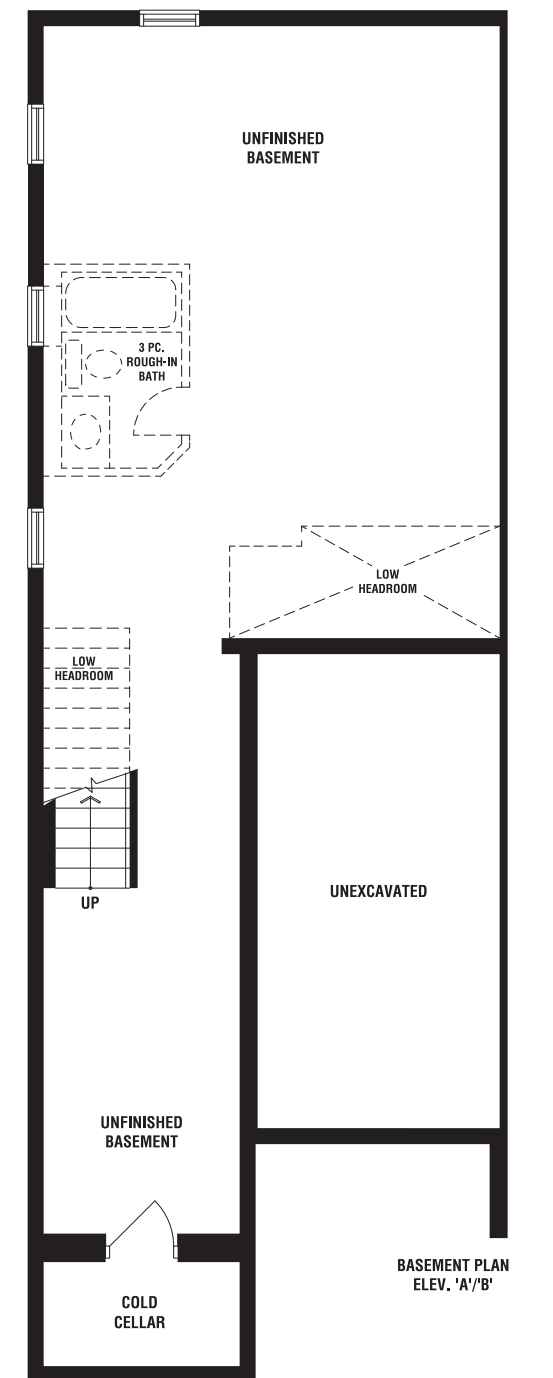
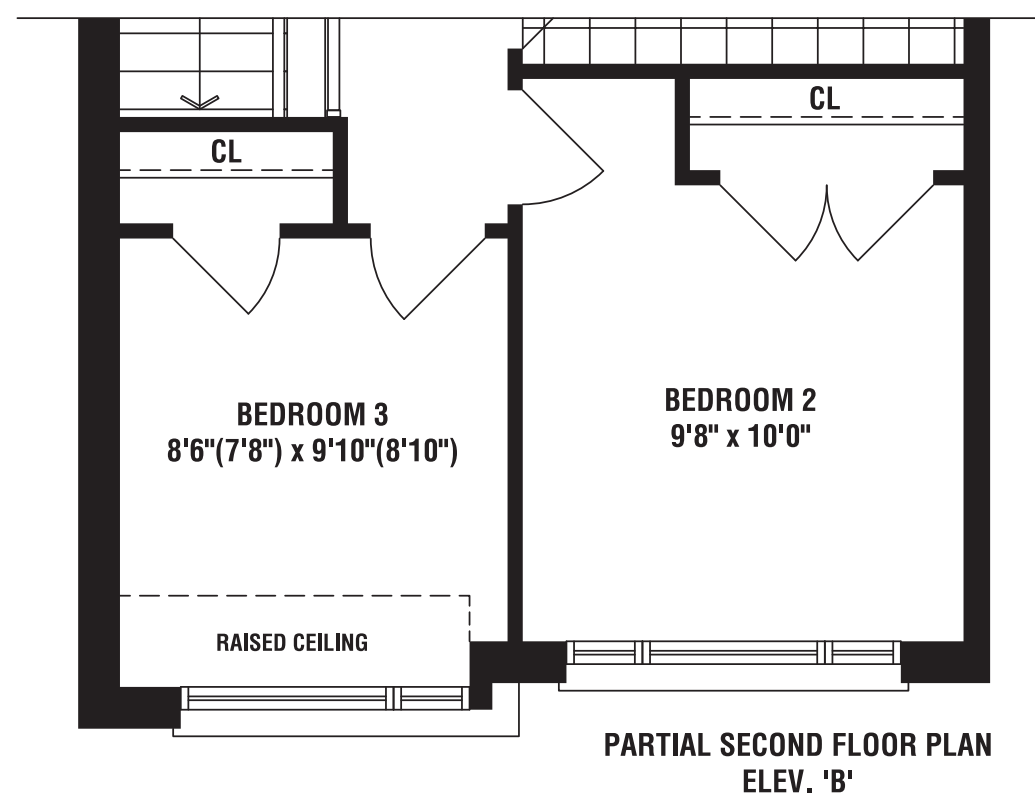
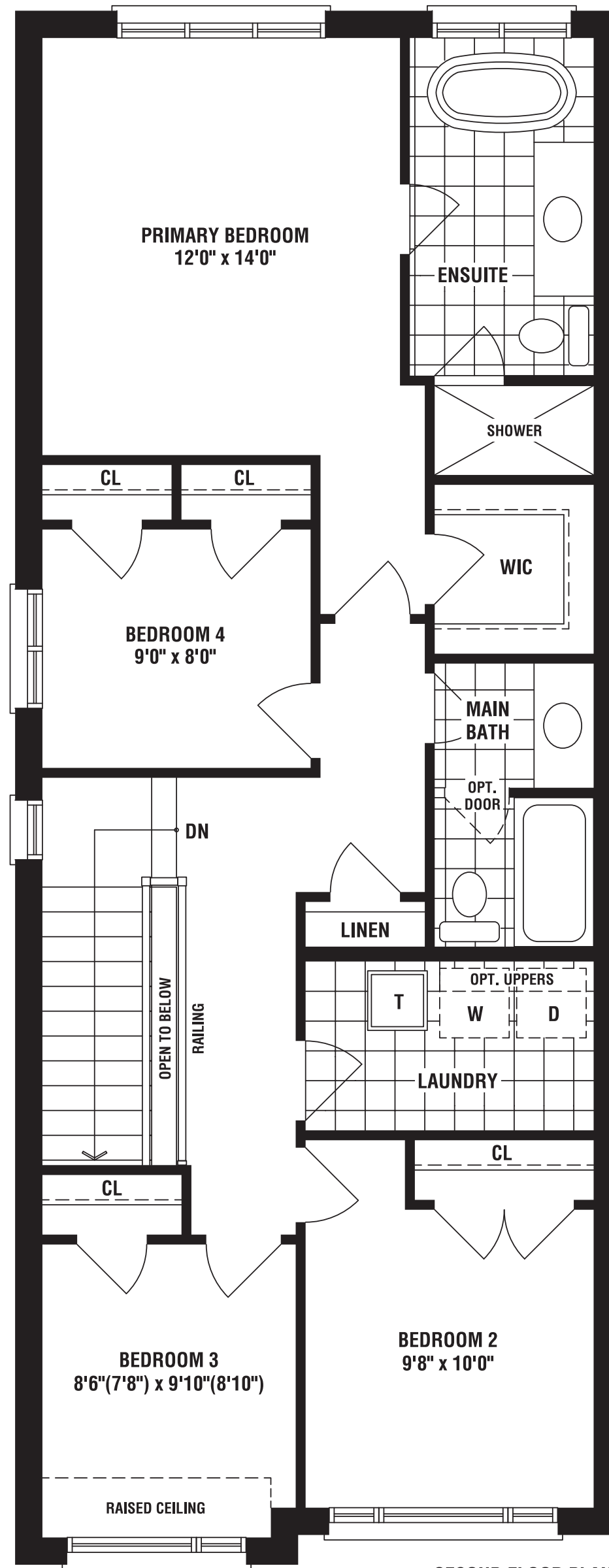
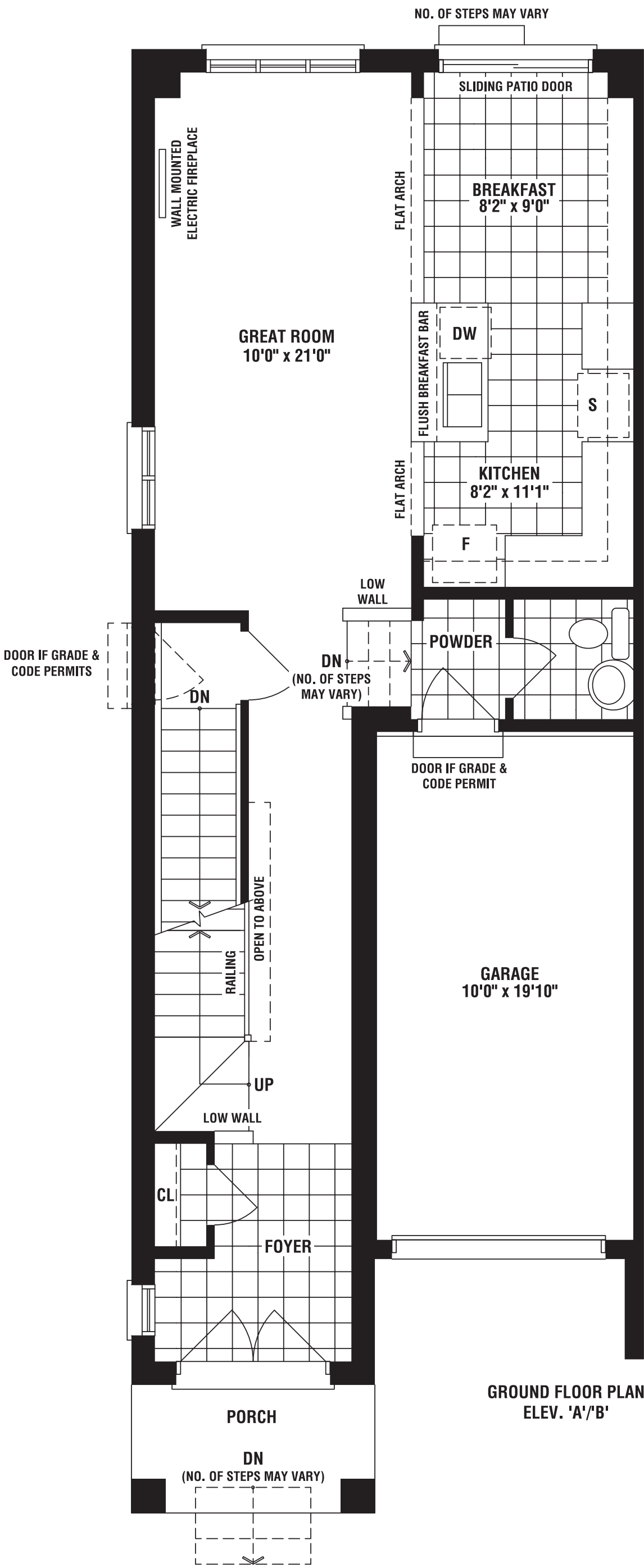


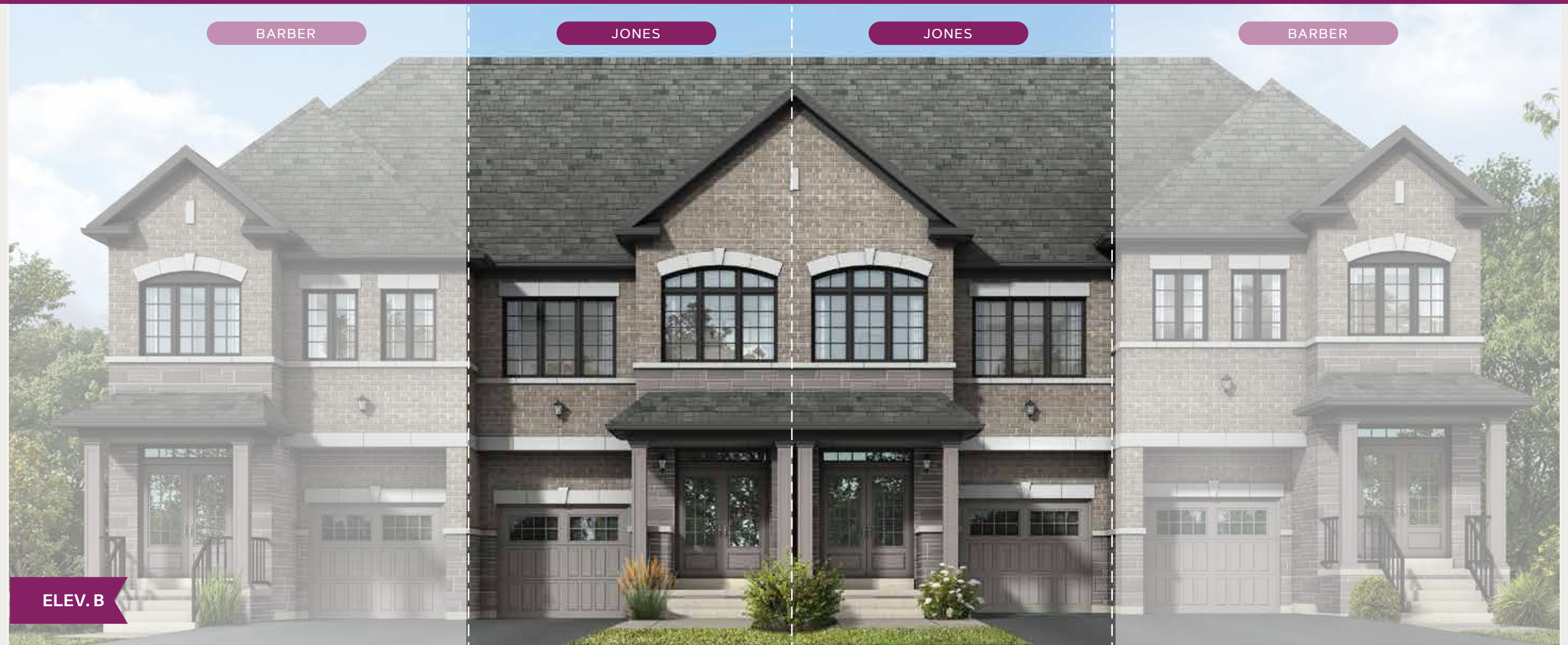
Remington
ELEV B • 1802 SQ. FT.



Remington
ELEV A • 1802 SQ. FT.





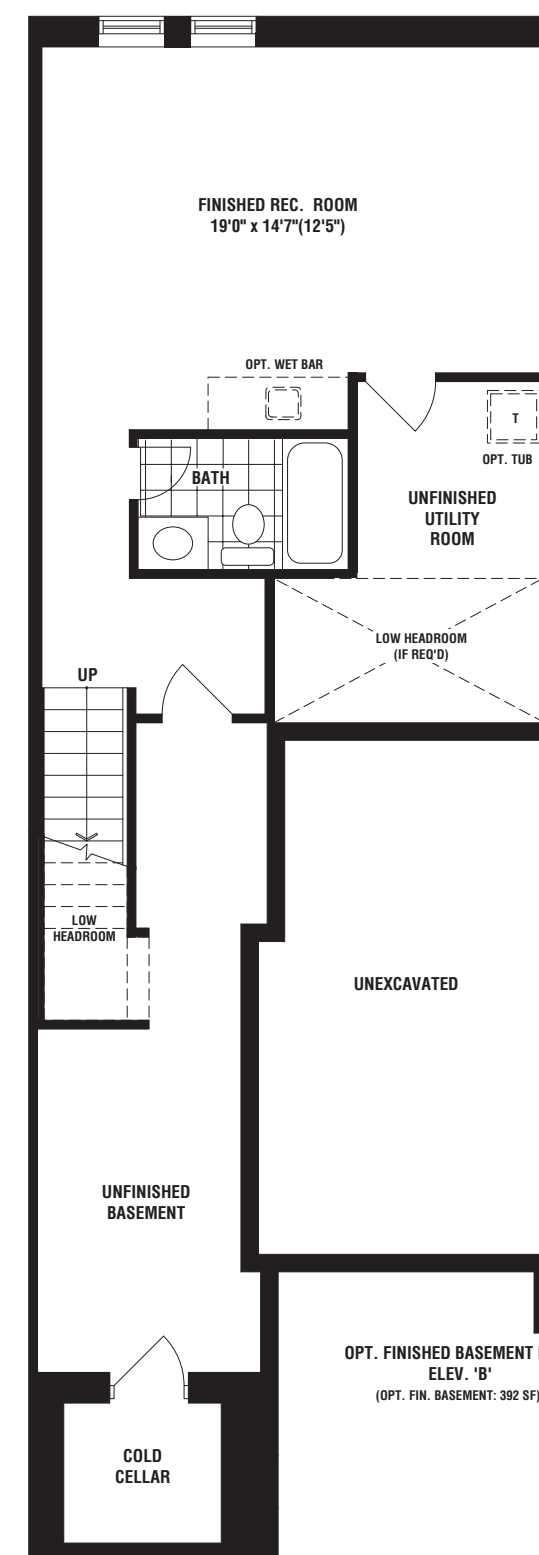
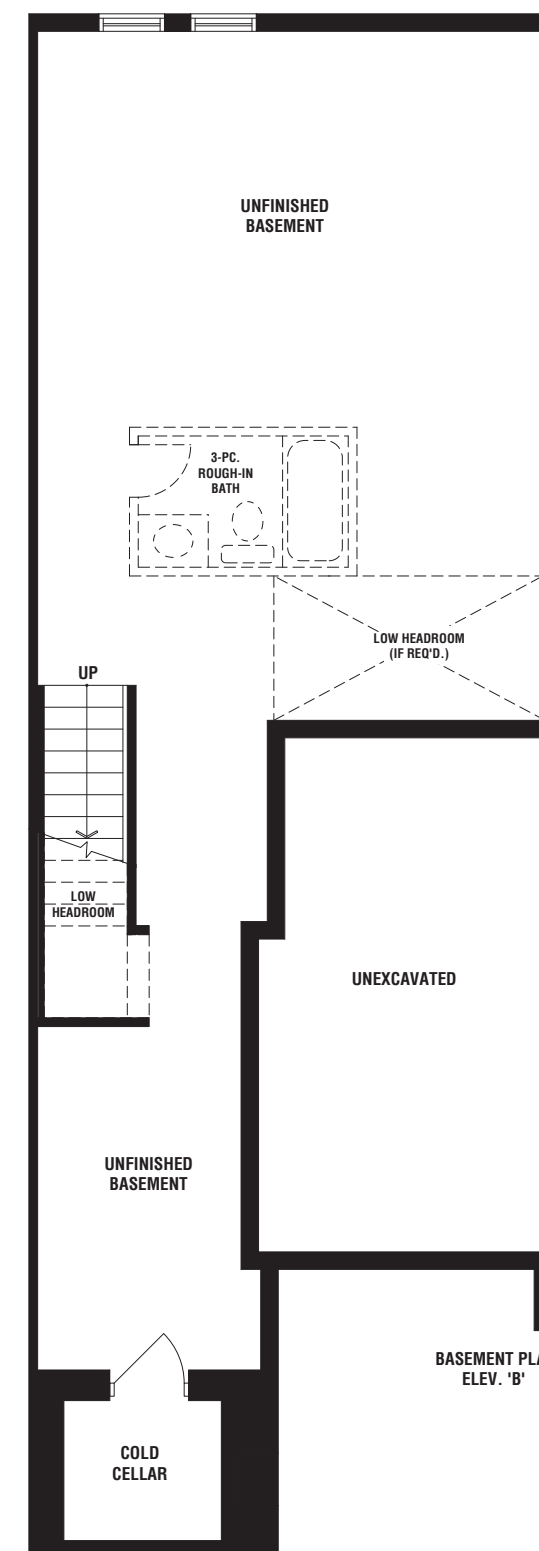
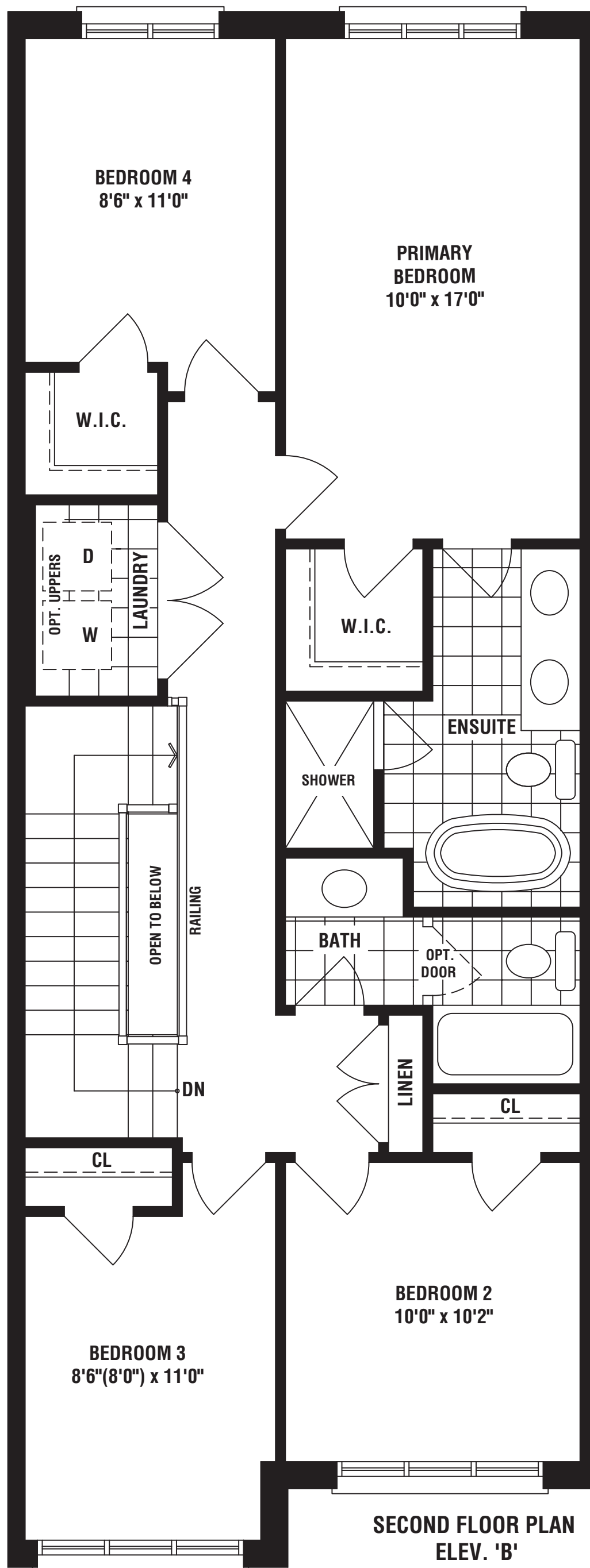
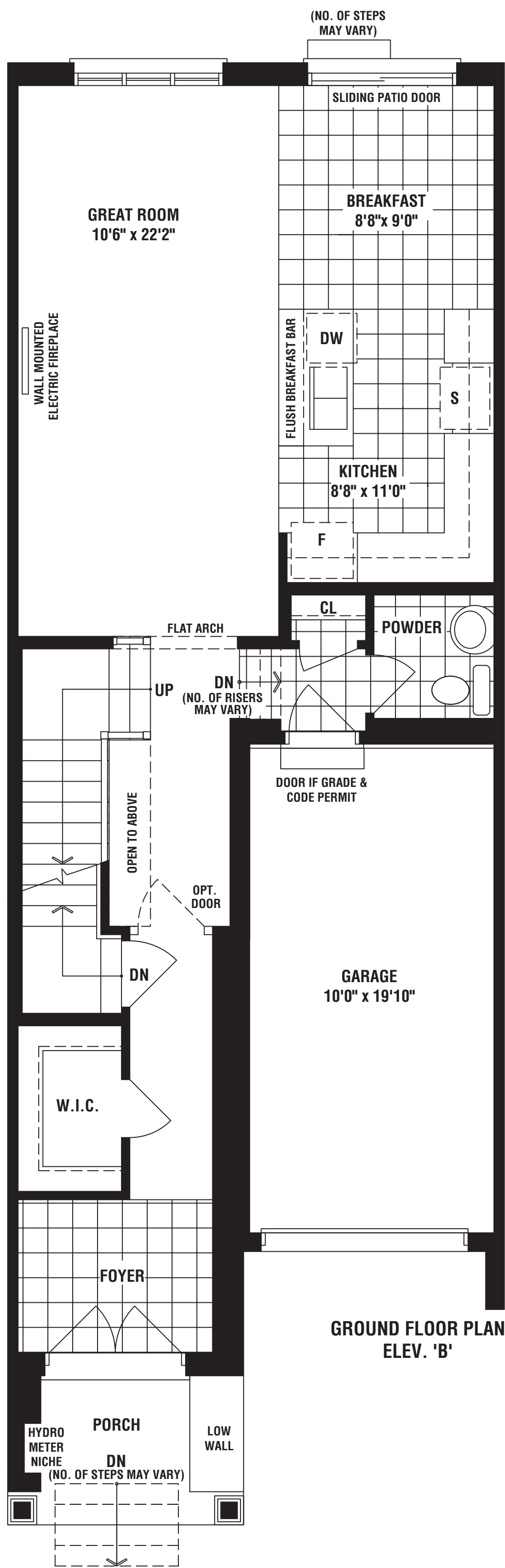


Jones

ELEV B • 1808 SQ. FT.



OVER 65 YEARS OF EXCELLENCE





Barber

ELEV A • 1932 SQ. FT.



OVER 65 YEARS OF EXCELLENCE



Singer

ELEV B • 2116 SQ. FT.
INCLUDES 314 SQ. FT. IN THE FINISHED LOWER LEVEL OF WHICH APPROXIMATELY 2/3 IS ABOVE GRADE AND 1/3 IS BELOW GRADE



OVER 65 YEARS OF EXCELLENCE

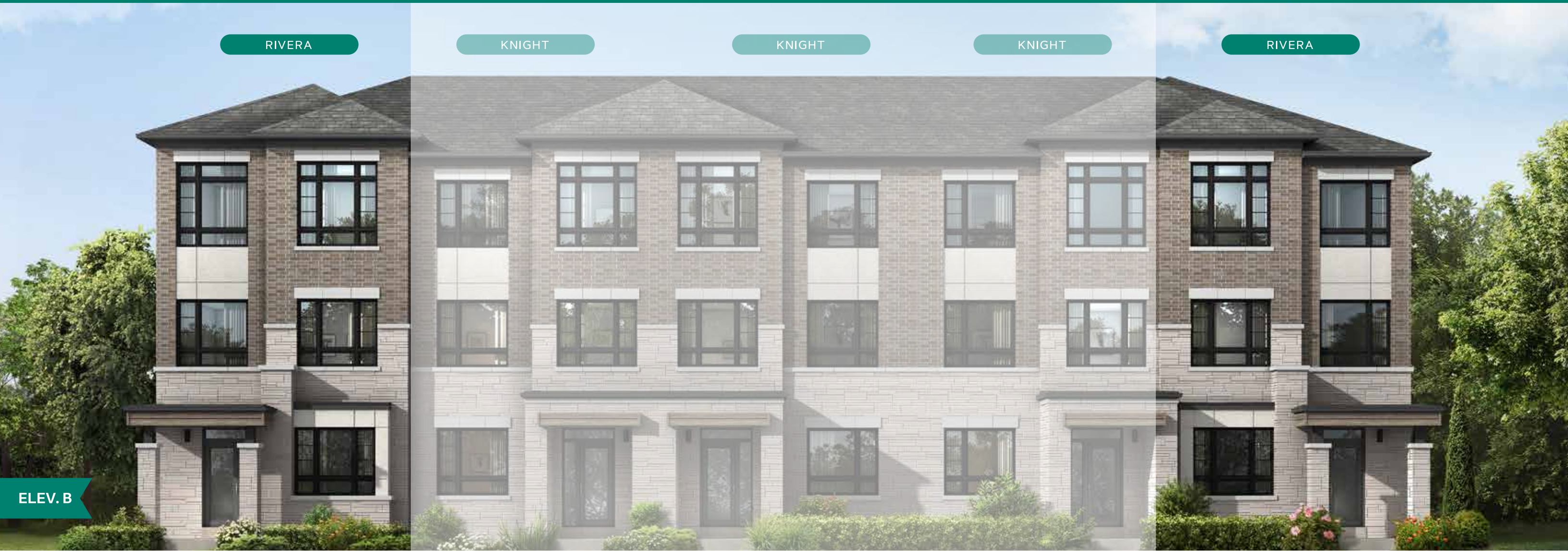


Singer

ELEV A • 2116 SQ. FT.
INCLUDES 314 SQ. FT. IN THE FINISHED LOWER LEVEL OF WHICH APPROXIMATELY 2/3 IS ABOVE GRADE AND 1/3 IS BELOW GRADE

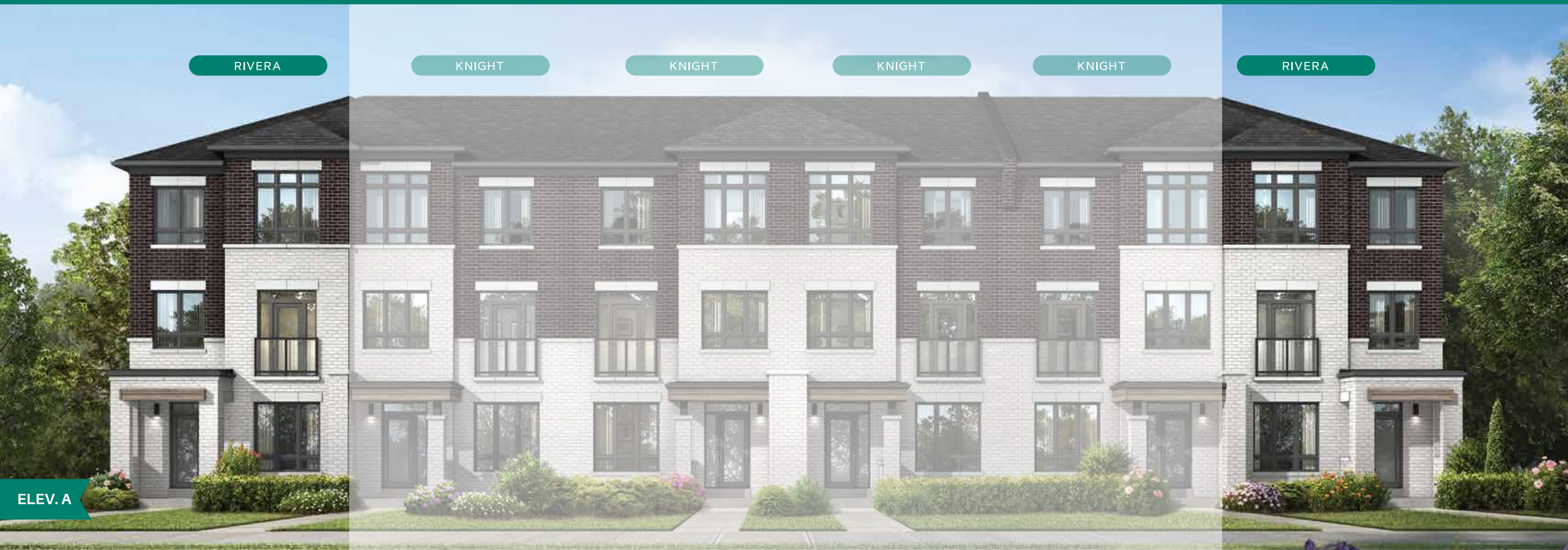


OVER 65 YEARS OF EXCELLENCE



Rivera

ELEV B • 2354 SQ. FT.



Rivera

ELEV A • 2378 SQ. FT.





Dixon

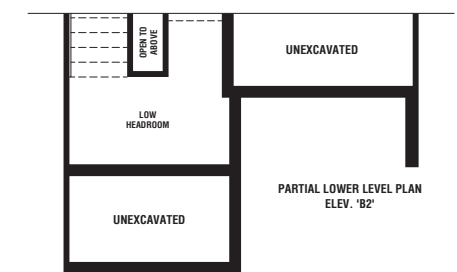
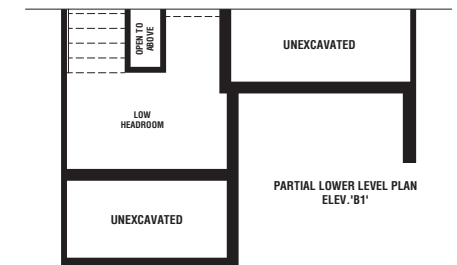
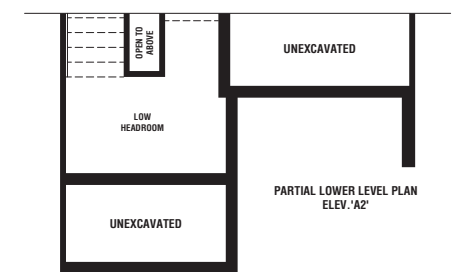
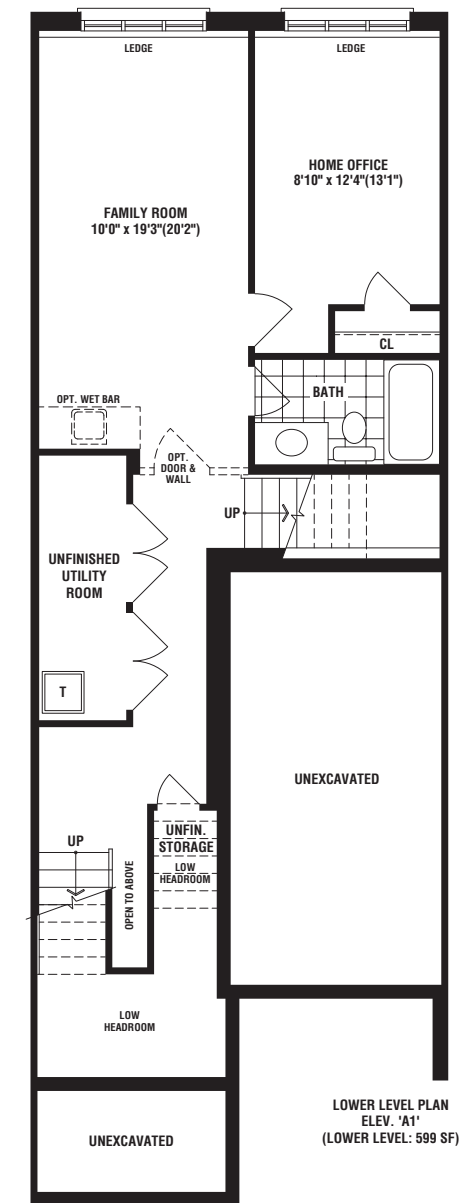
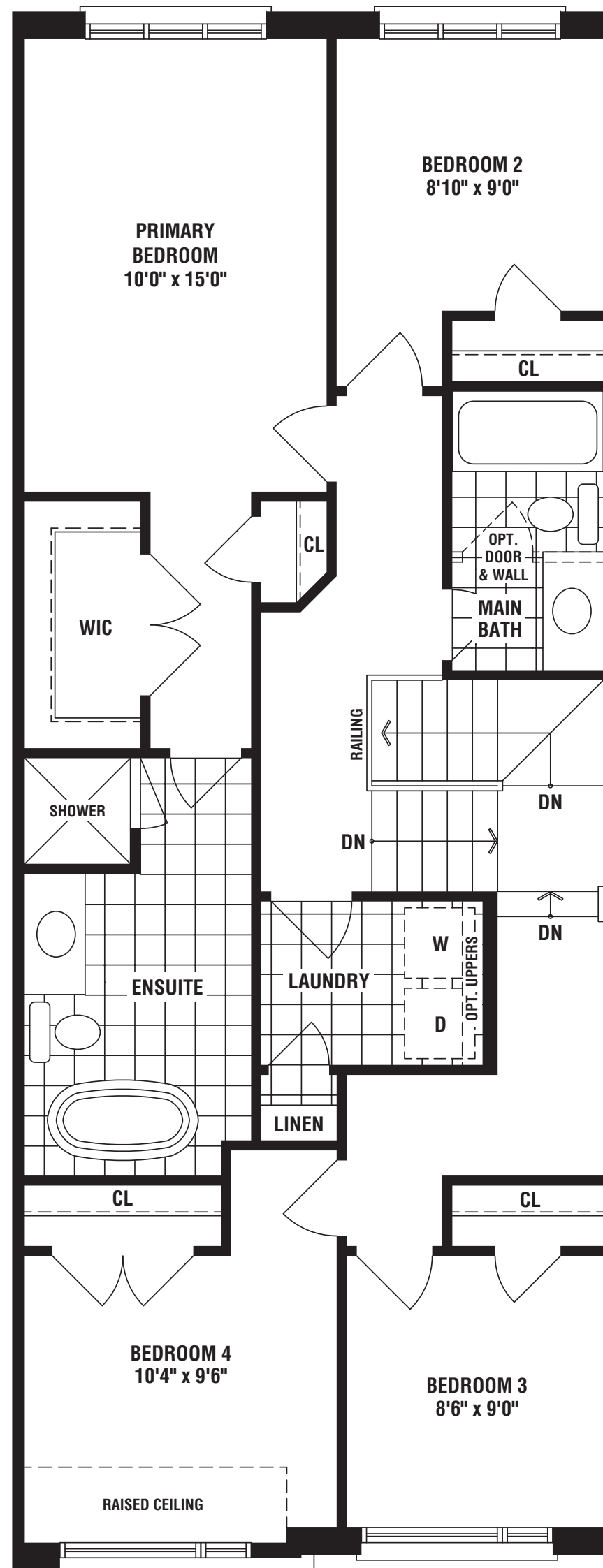
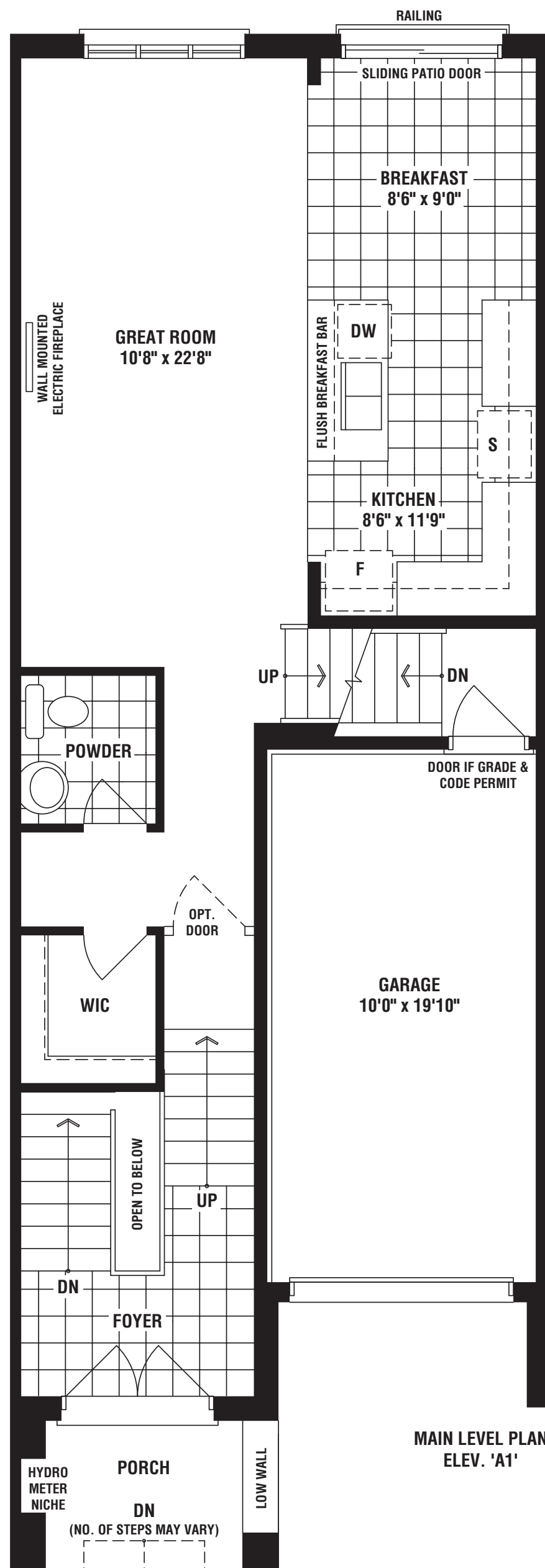
ELEV B1 • 2386 // ELEV. B2 • 2402 SQ. FT.
INCLUDES 599 SQ. FT. IN THE FINISHED LOWER LEVEL OF WHICH APPROXIMATELY 2/3 IS ABOVE GRADE AND 1/3 IS BELOW GRADE



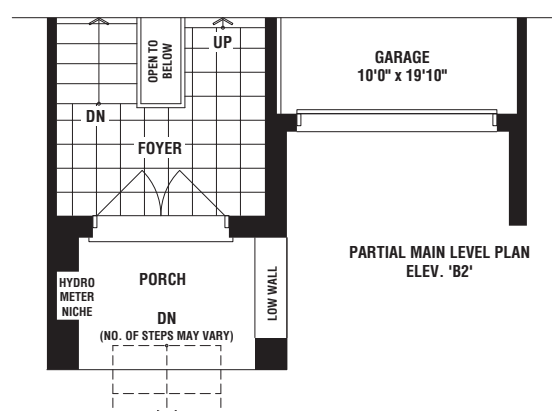
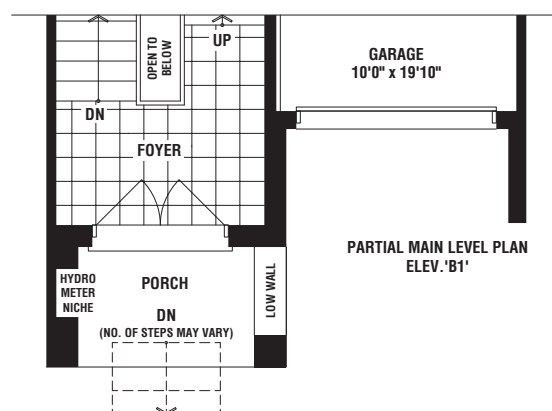
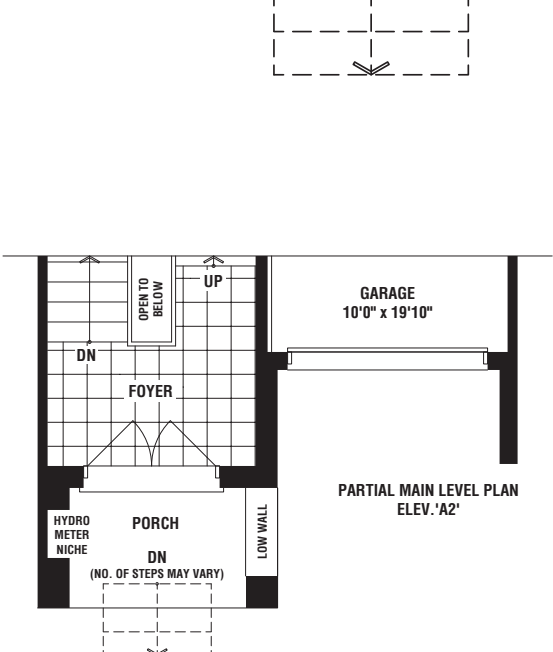
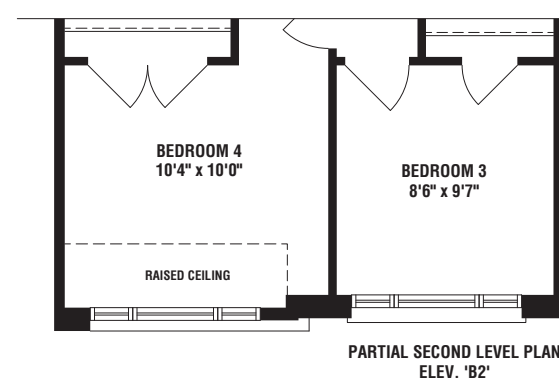
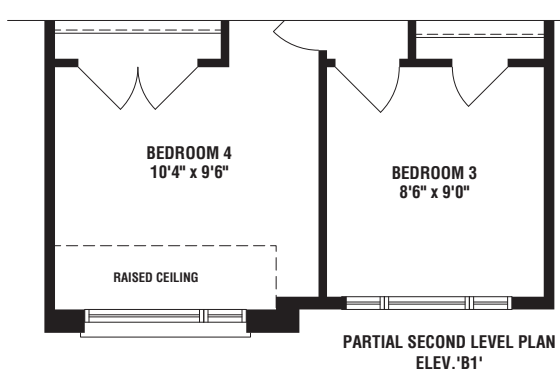
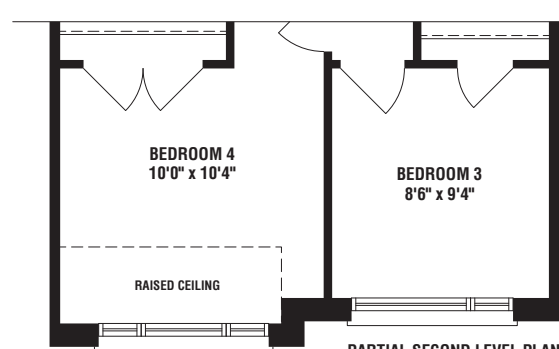
Dixon

ELEV A1 • 2386 // ELEV. A2 • 2402 SQ. FT.
INCLUDES 599 SQ. FT. IN THE FINISHED LOWER LEVEL OF WHICH APPROXIMATELY 2/3 IS ABOVE GRADE AND 1/3 IS BELOW GRADE





MODIFIED WINDOW FOR 'A1'
UNIT 4 BLOCK 21



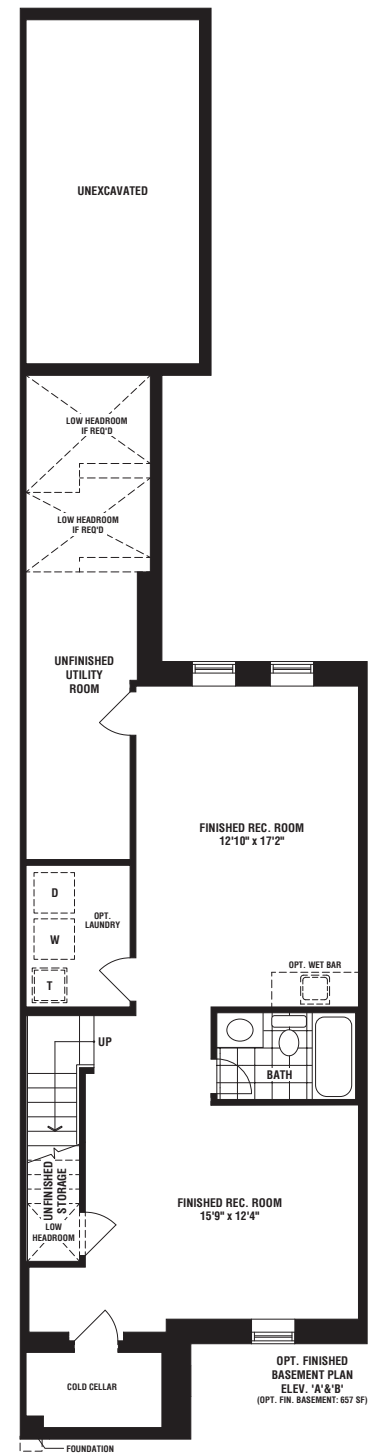
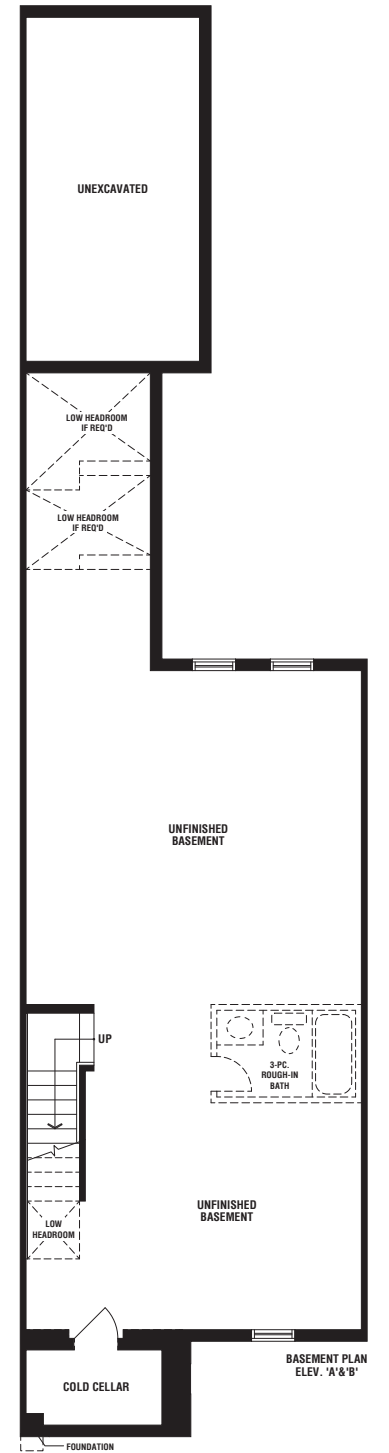
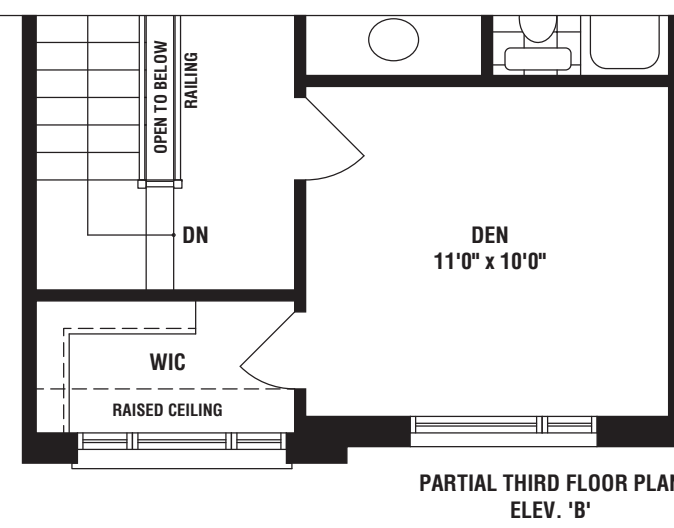
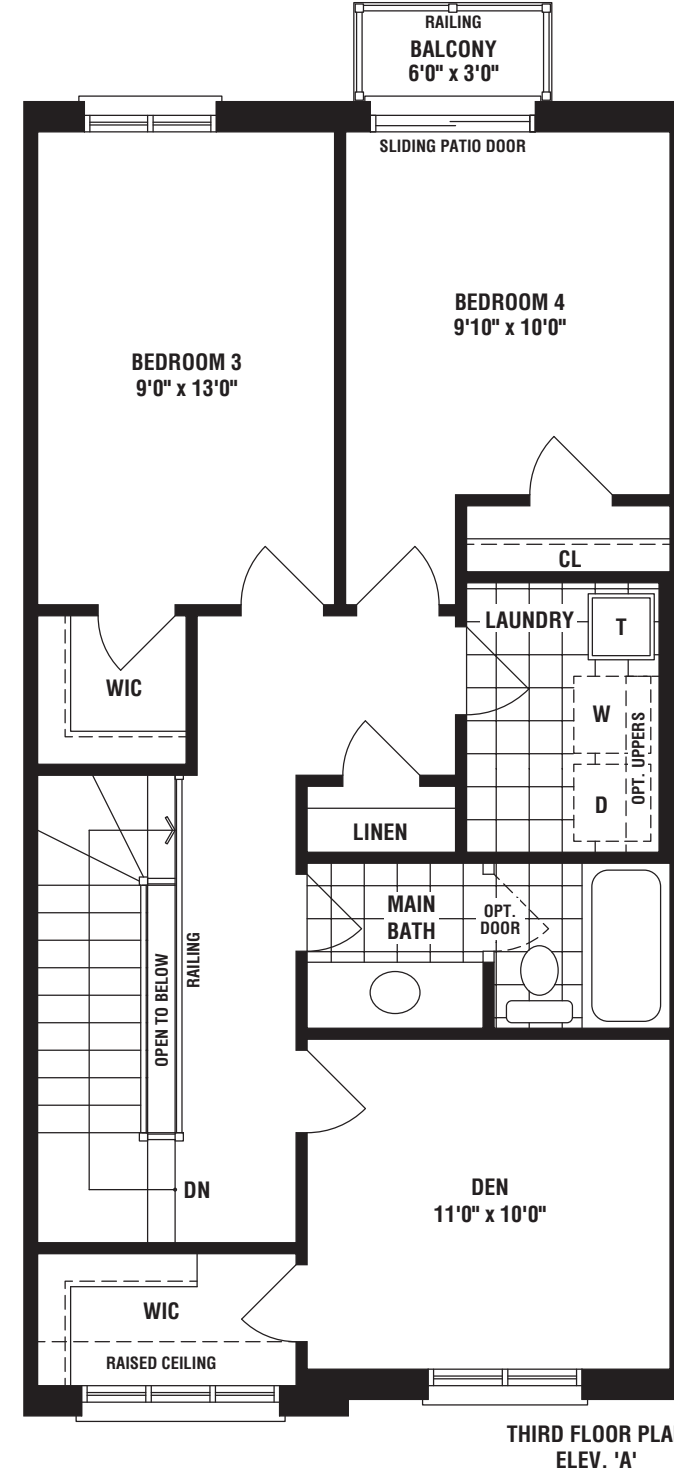
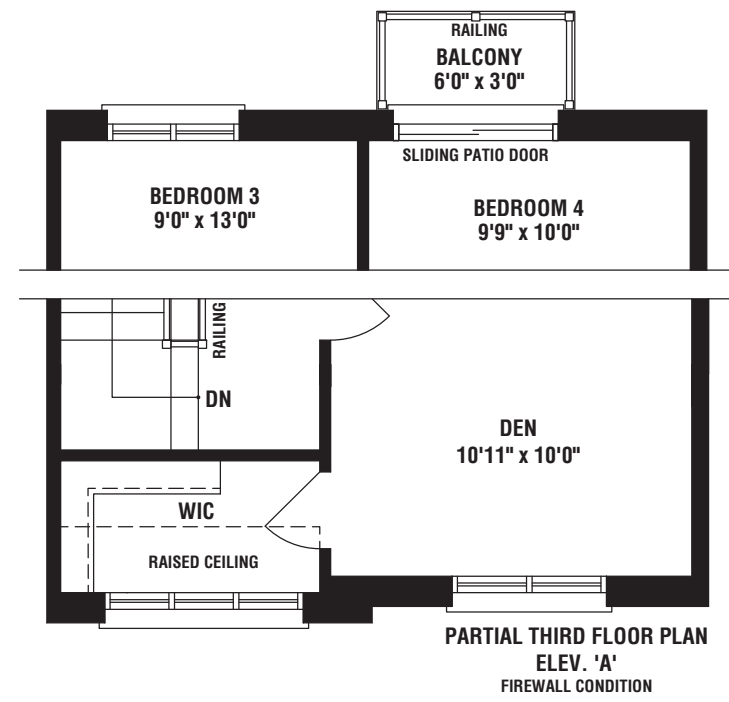
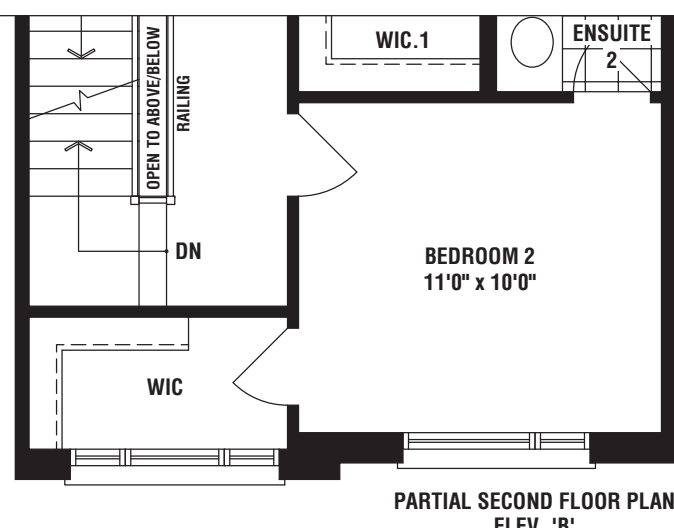
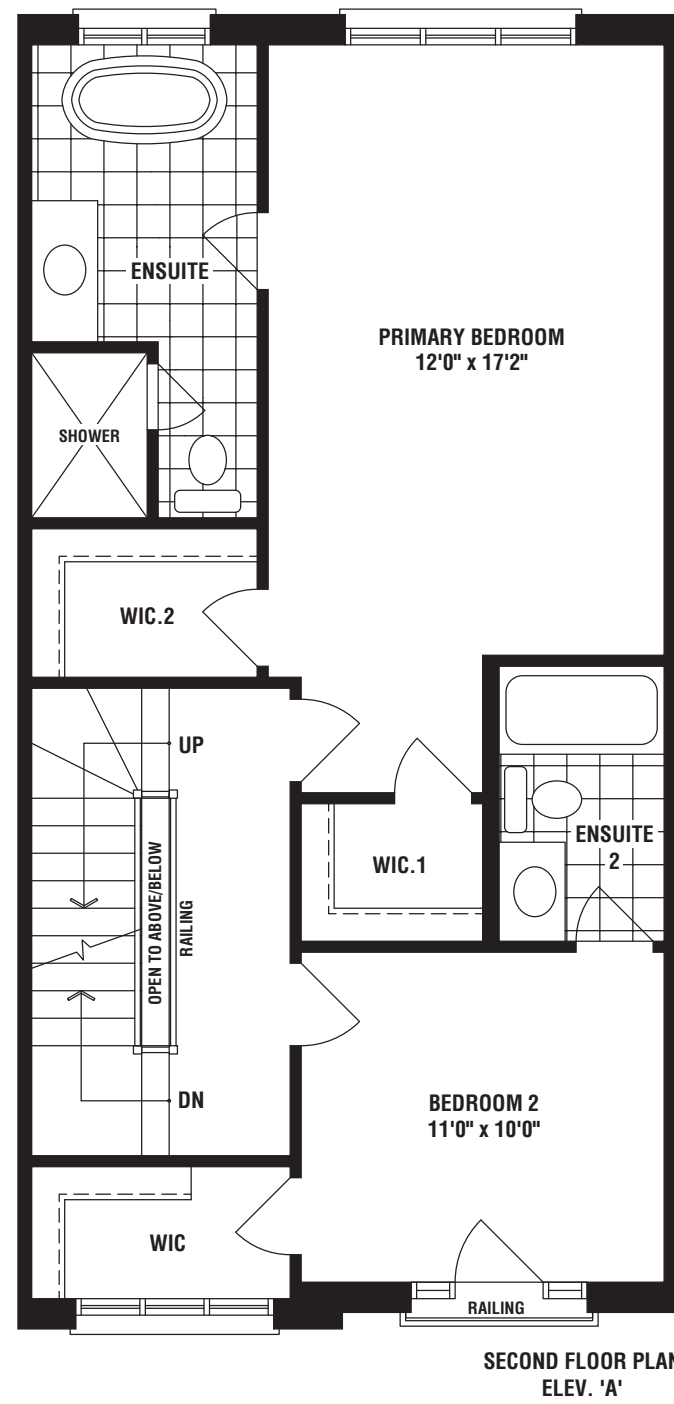
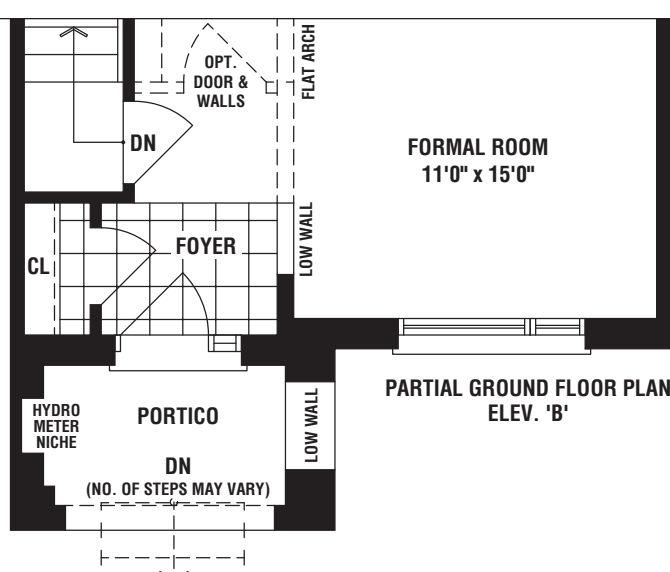
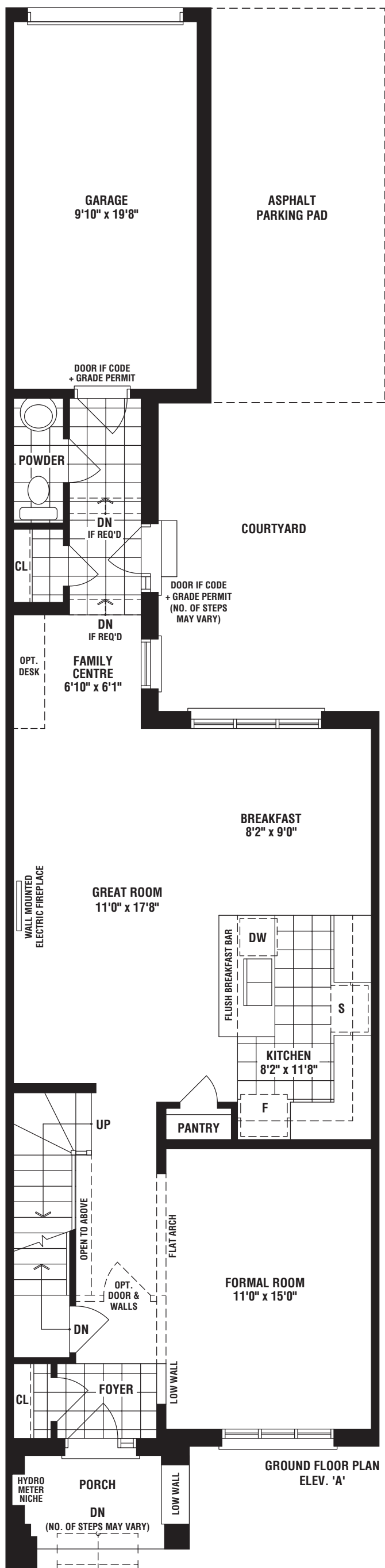


Knight
ELEV B • 2423 SQ. FT.



Knight
ELEV A • 2423 SQ. FT.







Matisse

ELEV B1 • 2427 SQ. FT.
INCLUDES 600 SQ. FT. IN THE FINISHED LOWER LEVEL OF WHICH APPROXIMATELY 2/3 IS ABOVE GRADE AND 1/3 IS BELOW GRADE

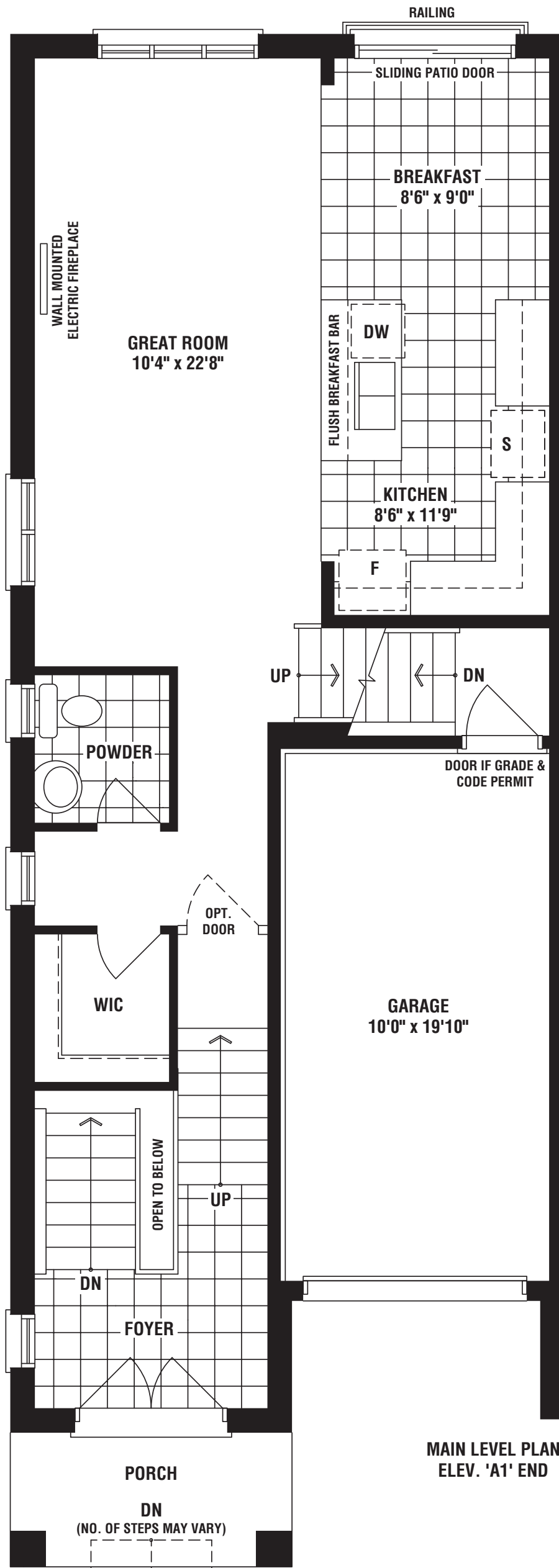


Matisse

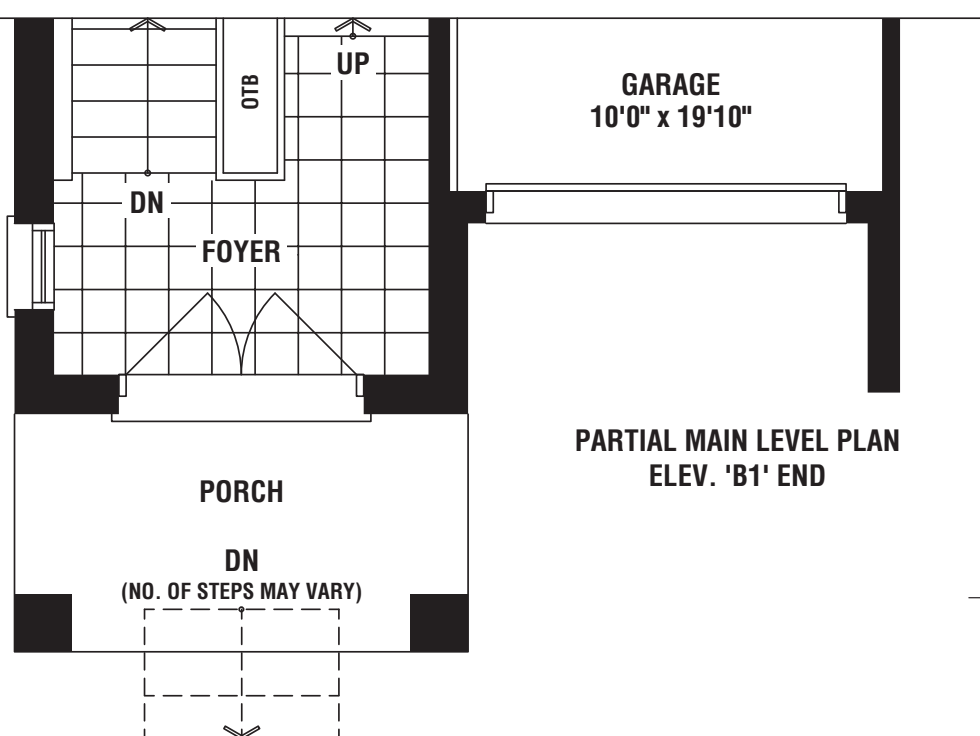
ELEV A1 • 2427 SQ. FT.
INCLUDES 600 SQ. FT. IN THE FINISHED LOWER LEVEL OF WHICH APPROXIMATELY 2/3 IS ABOVE GRADE AND 1/3 IS BELOW GRADE



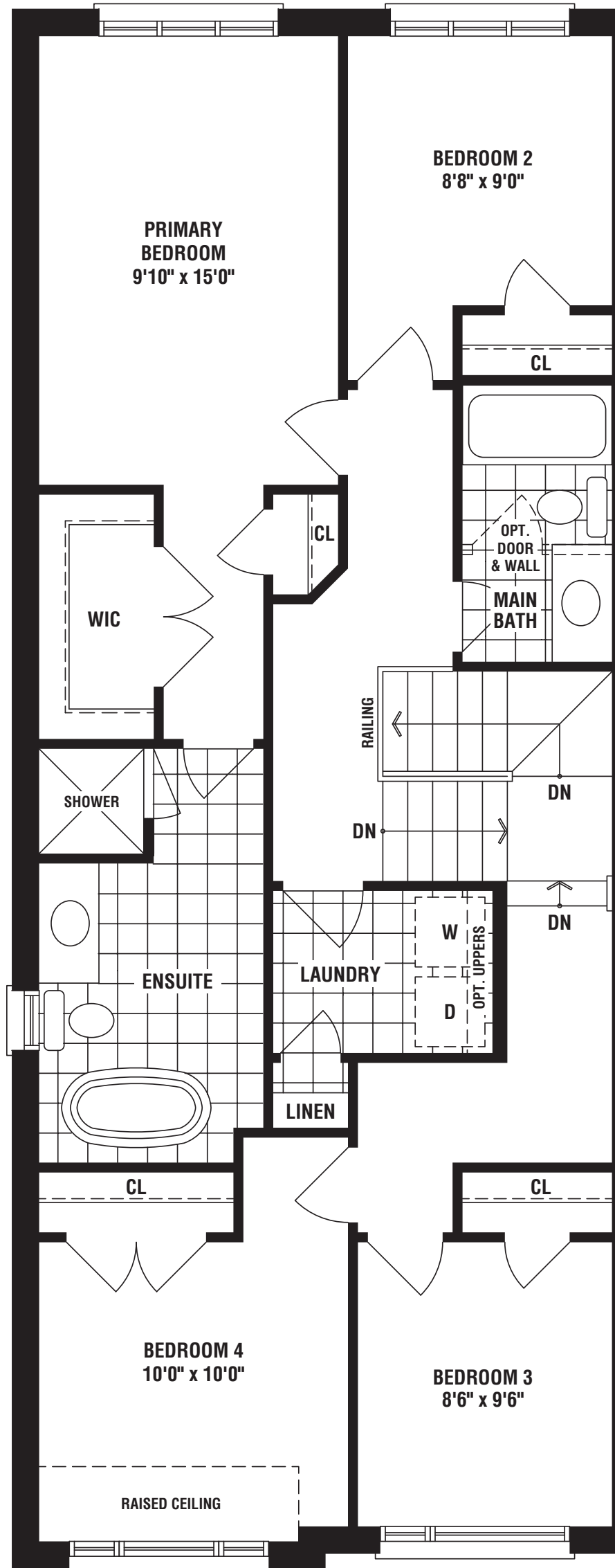
ELEV A1 • 2427 SQ. FT. // **ELEV B1** • 2427 SQ. FT.
 INCLUDES 600 SQ. FT. IN THE FINISHED LOWER LEVEL OF WHICH APPROXIMATELY 2/3 IS ABOVE GRADE AND 1/3 IS BELOW GRADE



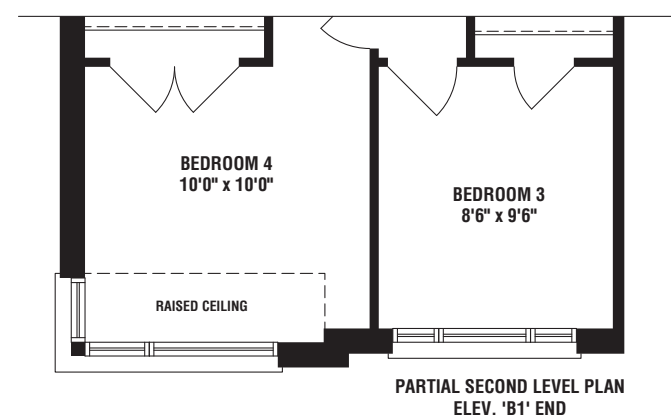
**MAIN LEVEL PLAN
ELEV. 'A1' END**



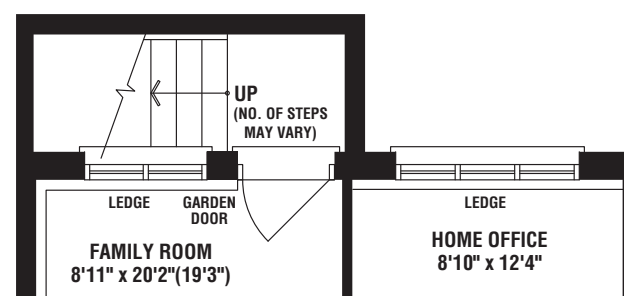
**PARTIAL MAIN LEVEL PLAN
ELEV. 'B1' END**



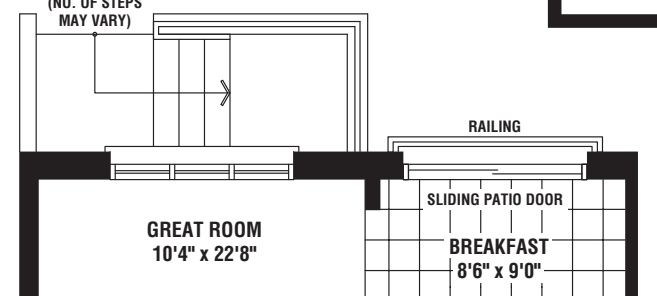
**SECOND LEVEL PLAN
ELEV. 'A1' END**



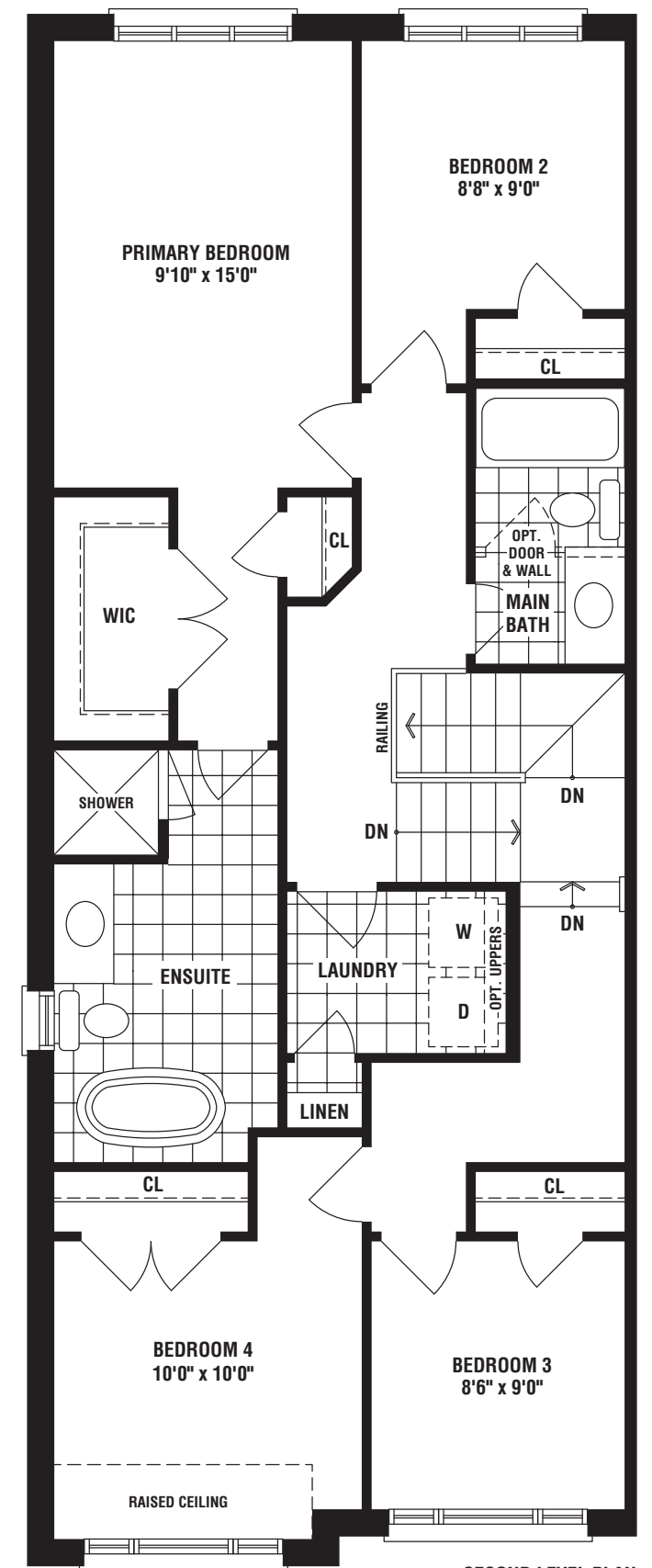
**PARTIAL SECOND LEVEL PLAN
ELEV. 'B1' END**



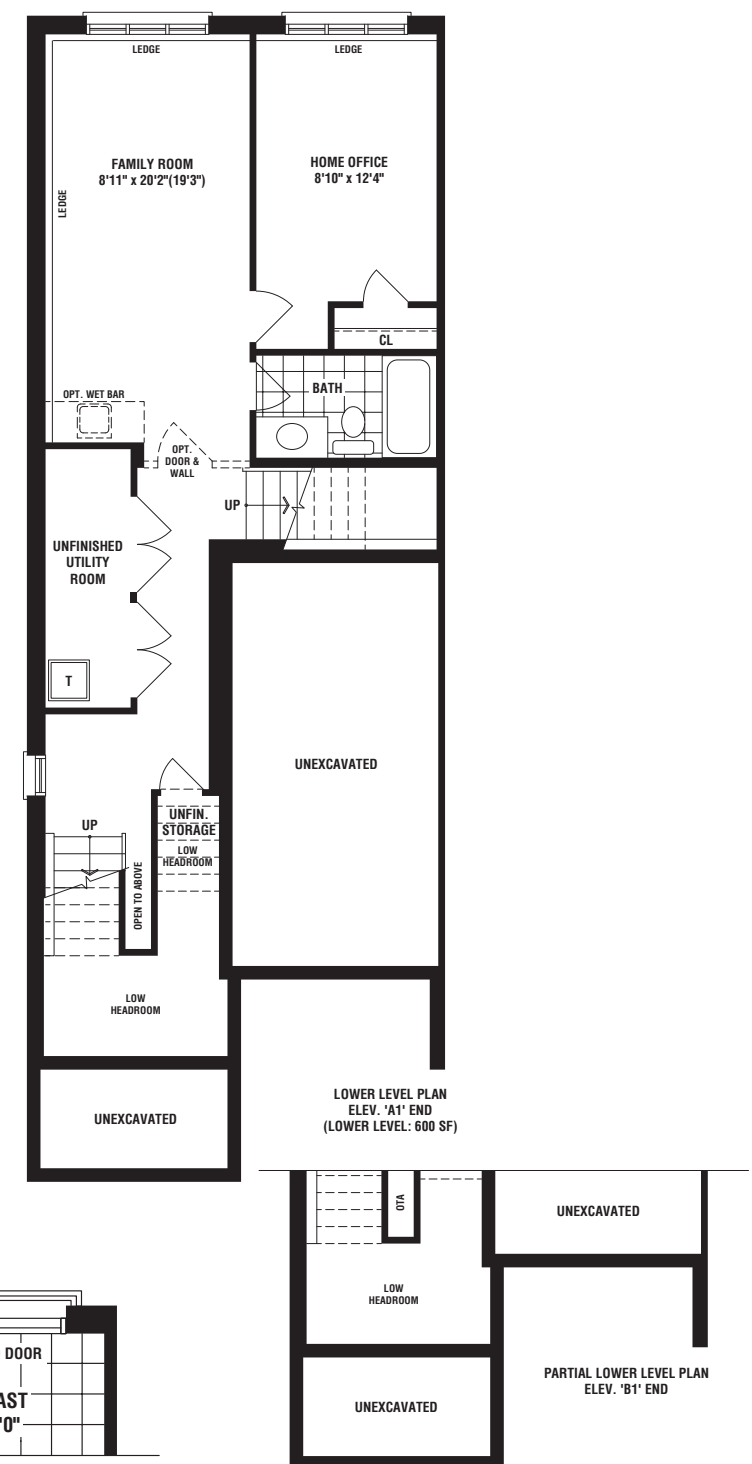
**PARTIAL LOWER LEVEL PLAN
ELEV. 'A1' END / 'B1' END
WALK-UP CONDITION**



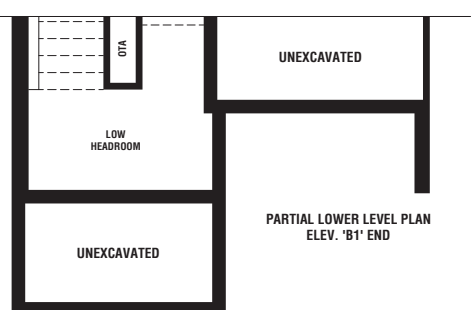
**PARTIAL MAIN LEVEL PLAN
ELEV. 'A1' END / 'B1' END
WALK-UP CONDITION**



**SECOND LEVEL PLAN
ELEV. 'A1' MOD. END
BLOCK:21/UNIT#5**



**LOWER LEVEL PLAN
ELEV. 'A1' END
(LOWER LEVEL: 600 SF)**



**PARTIAL LOWER LEVEL PLAN
ELEV. 'B1' END**