



North
CONDOS AT
OAKVILLE
Oak

TOWER 3

FLOORPLANS



INSPIRED LIVING
is in the Details.

TOWER 3

Tower 3 is connected to nature through the use of Biophilic Design Principles that include materials with natural textures, such as woodgrains and stone, abundant natural light, and extensive views of the surrounding nature.



Nestled into nature, the North Oak towers are sustainably designed, supporting your lifestyle and mindset.



Living amenities that meet you where you are - from your favourite yoga classes to front row seats at the campfire.



Renderings are artist's concept only. E.&O.E

OUTDOOR FIREPIT

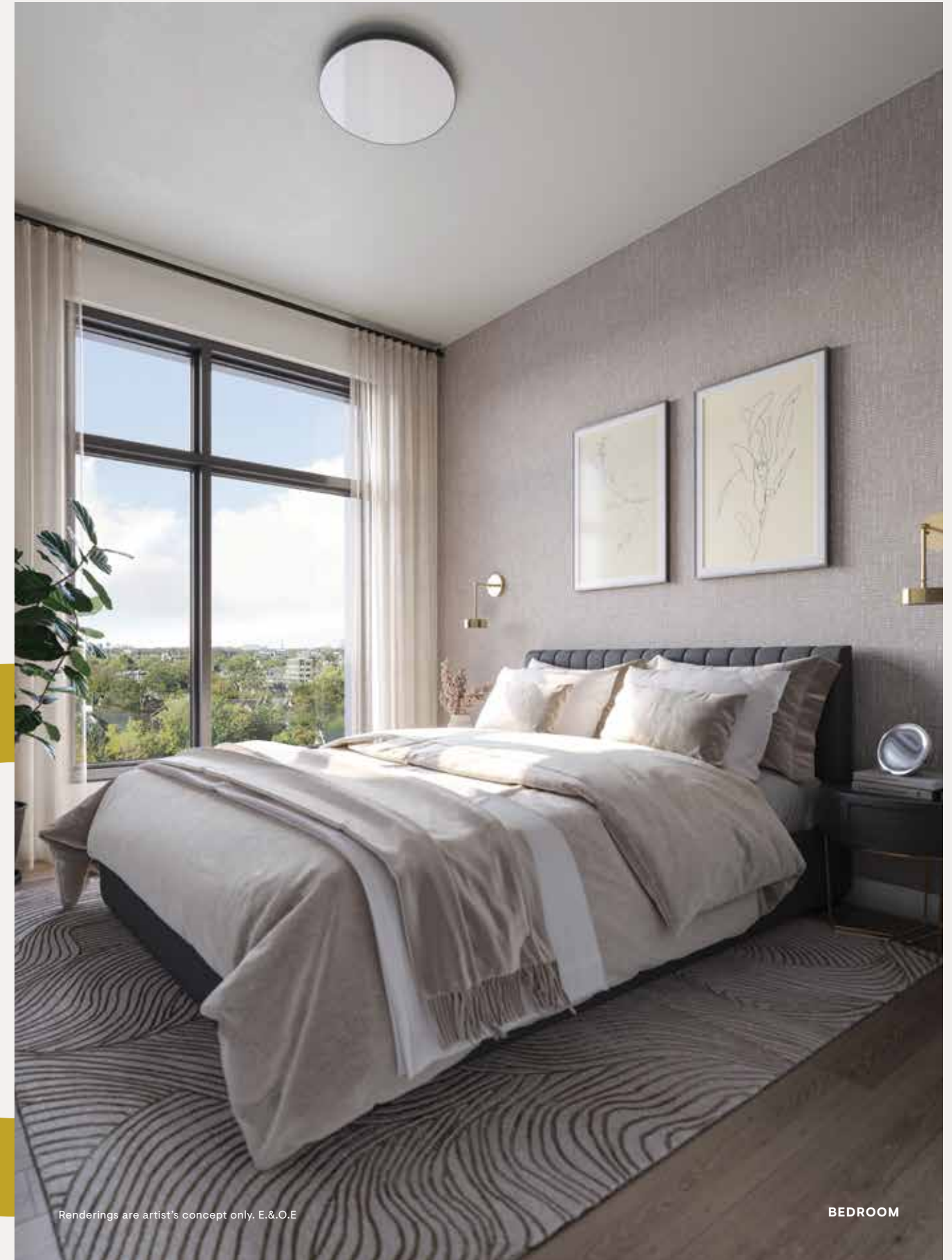


YOGA ROOM

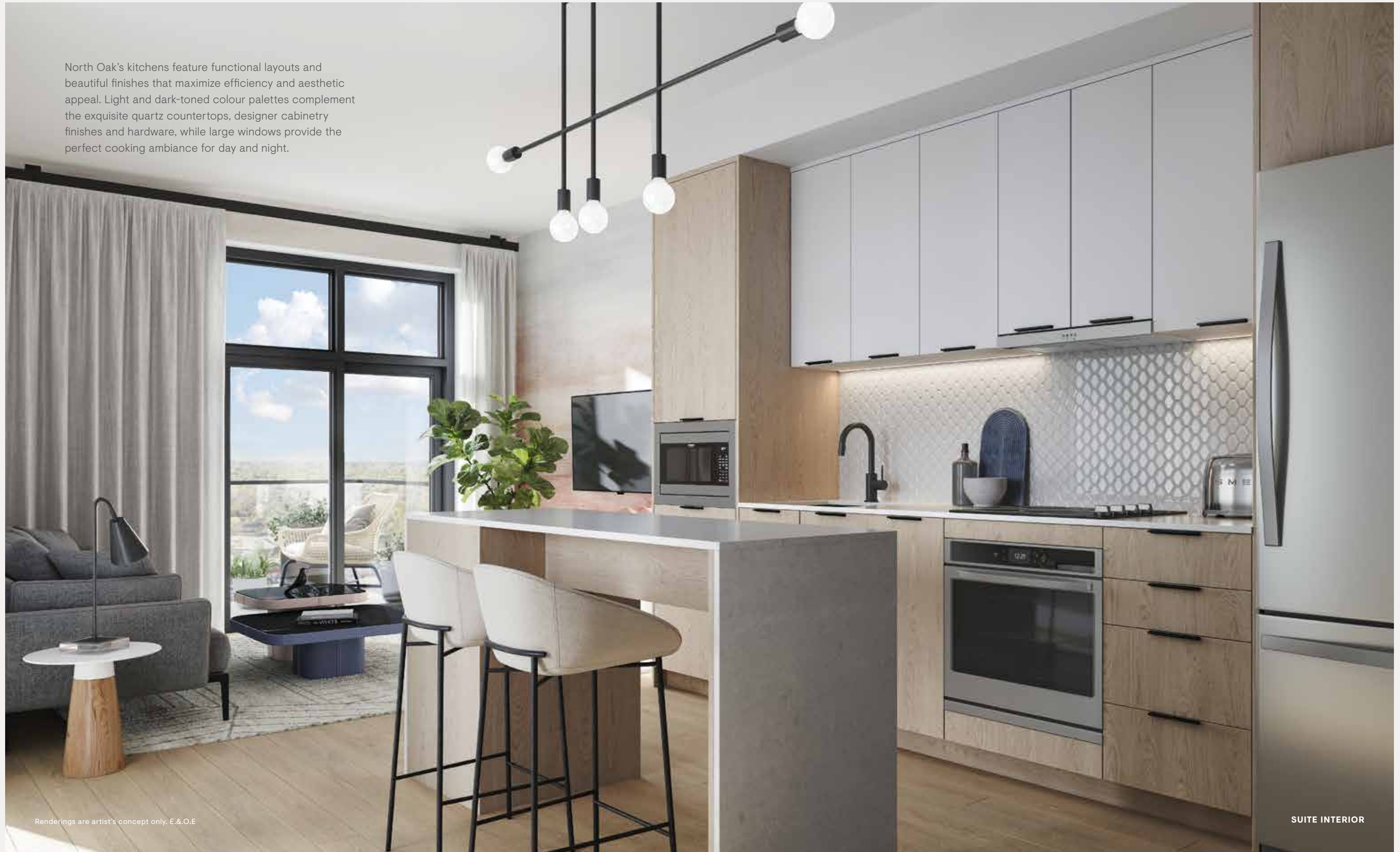


ARTISTRY In Every Detail.

Clean, linear flow and design sets the interior ambience of the suites at North Oak—from the engineered laminate flooring and contemporary transitional detailing, to the alluring use of colour-blocking between a light and dark palette. Beyond the design, the flow of the suites is open and modern, warmly inviting residents home. Minto Intelligence (MI) smart home technology system digitally controls suite temperatures, unlocks your door and so much more.



North Oak's kitchens feature functional layouts and beautiful finishes that maximize efficiency and aesthetic appeal. Light and dark-toned colour palettes complement the exquisite quartz countertops, designer cabinetry finishes and hardware, while large windows provide the perfect cooking ambiance for day and night.



Renderings are artist's concept only. E.&O.E

SUITE INTERIOR

FLOORPLANS

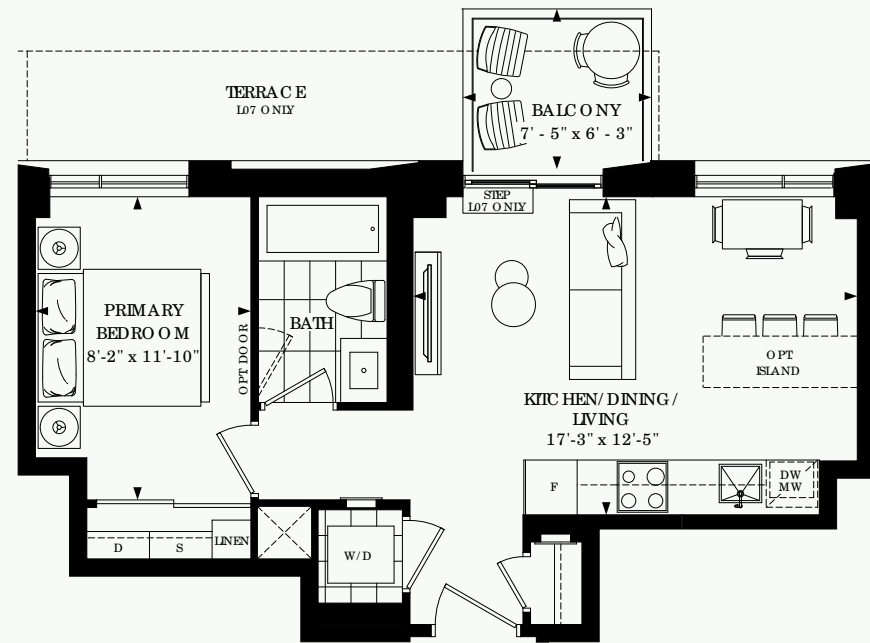


517

1 BEDROOM
1 BATHROOM
Floors 7-16

Indoor Living
Outdoor Living
Total Living

517 sq. ft.
46 sq. ft.
563 sq. ft.

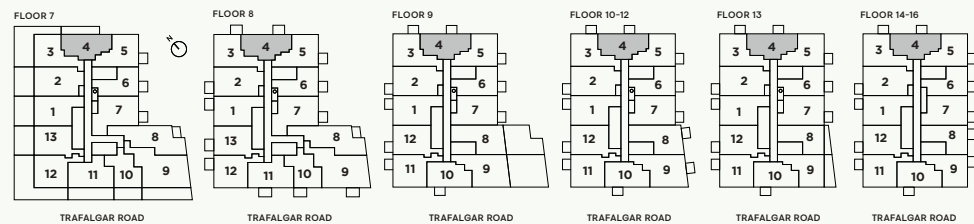
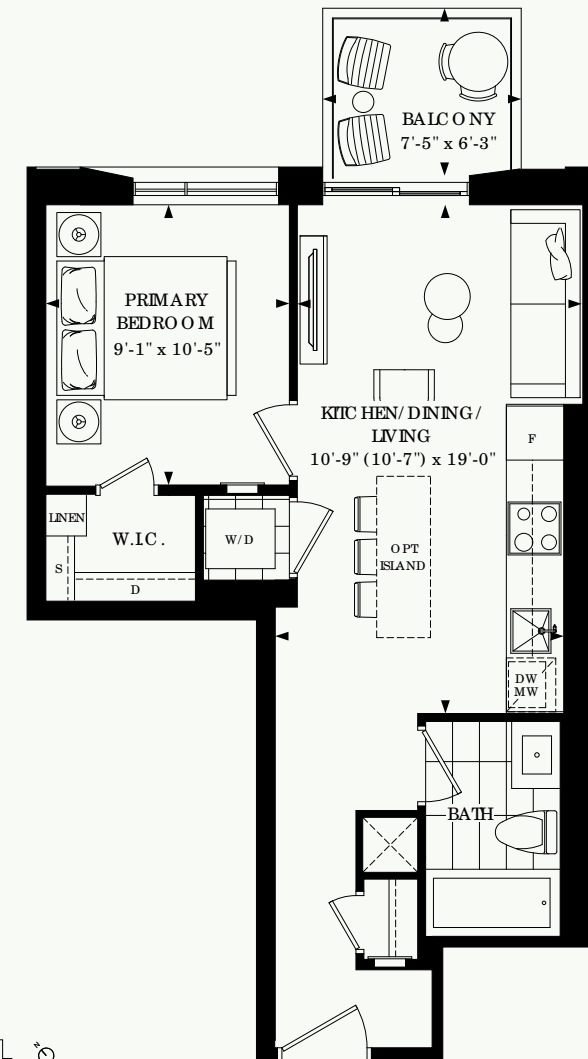


529

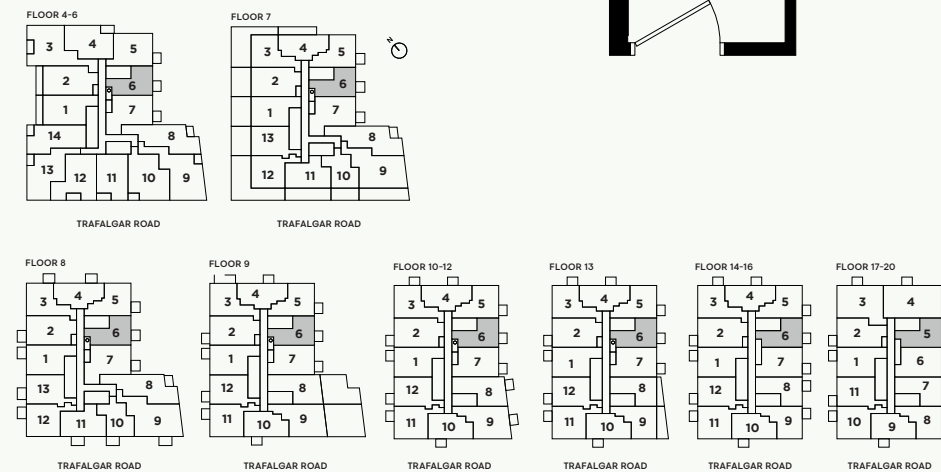
1 BEDROOM
1 BATHROOM
Floors 4-20

Indoor Living
Outdoor Living
Total Living

529 sq. ft.
46 sq. ft.
575 sq. ft.



All plans, dimensions and specifications are subject to change without notice. Actual usable floor space may vary from the stated floor area. Column locations, window locations and size may vary and are subject to change without notice. Renderings are artists concept and will change if required by site conditions. Plans, specifications and materials are subject to availability, substitution, modification without notice at sole discretion of Minto Communities Inc. E. & O.E. 0822

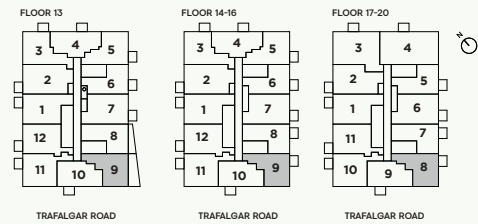
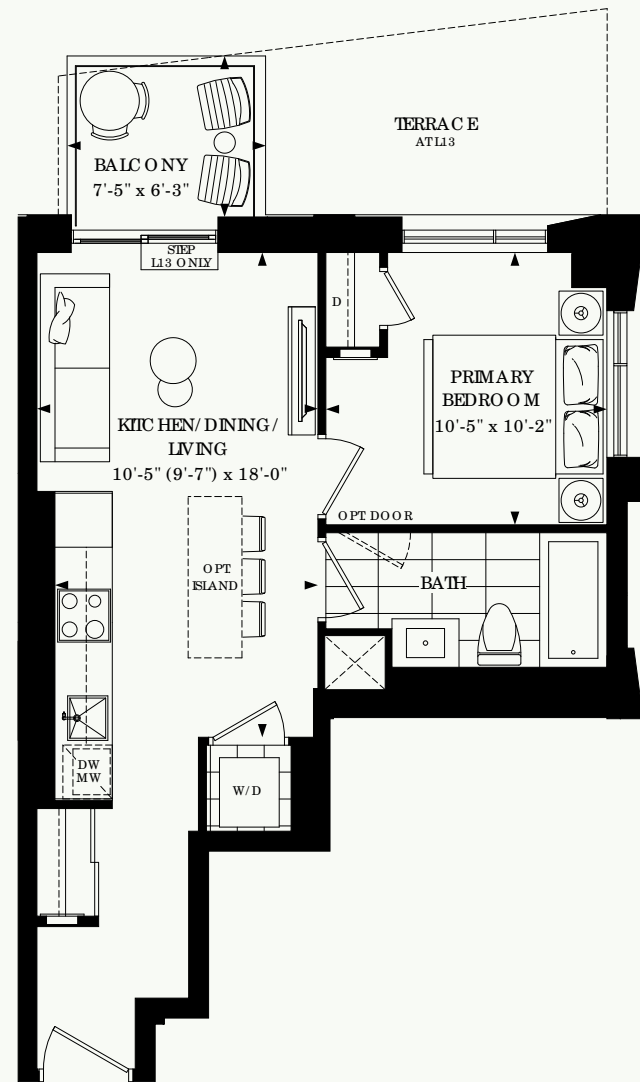


All plans, dimensions and specifications are subject to change without notice. Actual usable floor space may vary from the stated floor area. Column locations, window locations and size may vary and are subject to change without notice. Renderings are artists concept and will change if required by site conditions. Plans, specifications and materials are subject to availability, substitution, modification without notice at sole discretion of Minto Communities Inc. E. & O.E. 0822

530

1 BEDROOM
1 BATHROOM
Floors 13-20

Indoor Living **530 sq. ft.**
Outdoor Living **46 sq. ft.**
Total Living **576 sq. ft.**

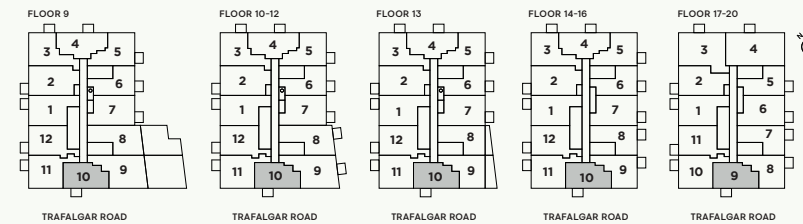
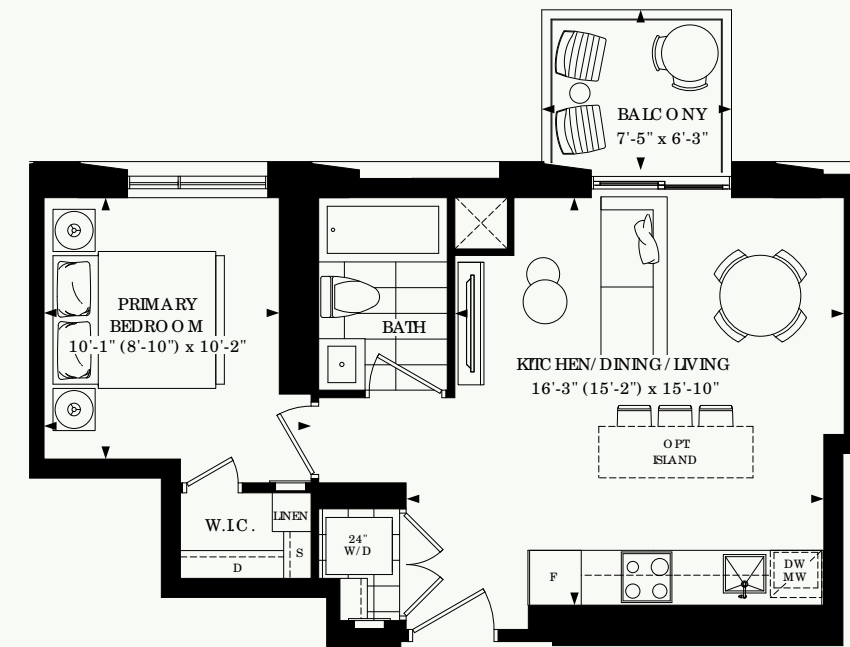


All plans, dimensions and specifications are subject to change without notice. Actual usable floor space may vary from the stated floor area. Column locations, window locations and size may vary and are subject to change without notice. Renderings are artists concept and will change if required by site conditions. Plans, specifications and materials are subject to availability, substitution, modification without notice at sole discretion of Minto Communities Inc. E. & O.E. 0822

534

1 BEDROOM
1 BATHROOM
Floors 9-20

Indoor Living **534 sq. ft.**
Outdoor Living **46 sq. ft.**
Total Living **580 sq. ft.**

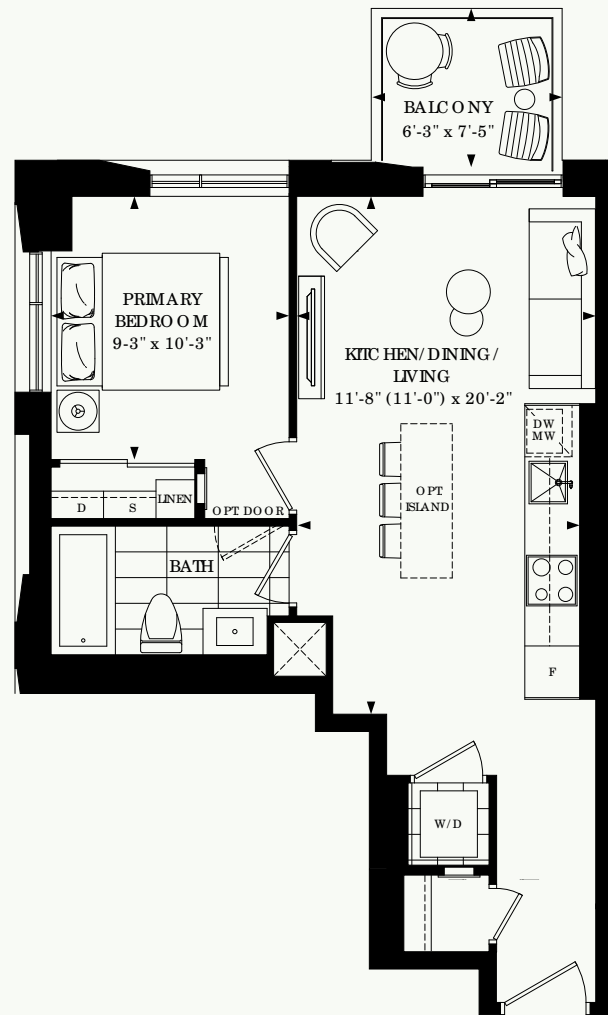


All plans, dimensions and specifications are subject to change without notice. Actual usable floor space may vary from the stated floor area. Column locations, window locations and size may vary and are subject to change without notice. Renderings are artists concept and will change if required by site conditions. Plans, specifications and materials are subject to availability, substitution, modification without notice at sole discretion of Minto Communities Inc. E. & O.E. 0822

576

1 BEDROOM
1 BATHROOM
Floors 7-16

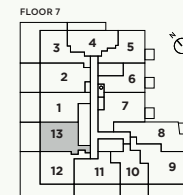
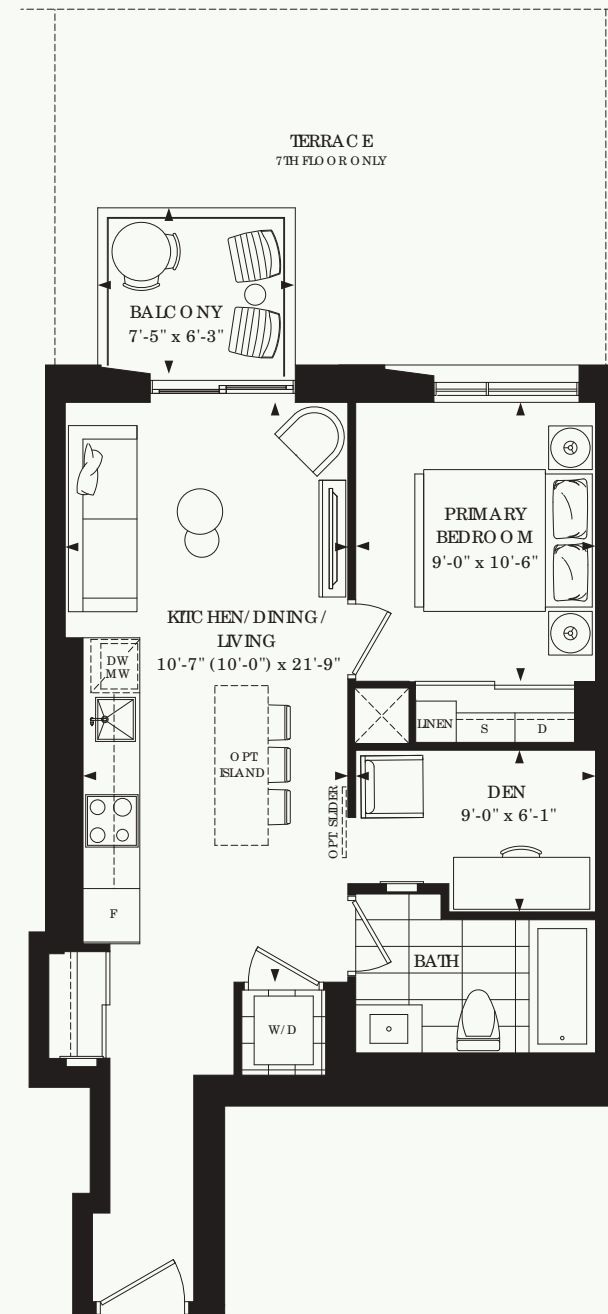
Indoor Living **576 sq. ft.**
Outdoor Living **46 sq. ft.**
Total Living **622 sq. ft.**



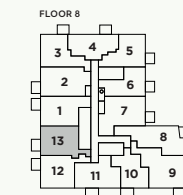
615

1 BEDROOM + DEN
1 BATHROOM
Floors 7-20

Indoor Living **615 sq. ft.**
Outdoor Living **46 sq. ft.**
Total Living **661 sq. ft.**



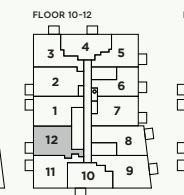
TRAFALGAR ROAD



TRAFALGAR ROAD



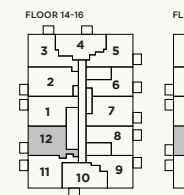
TRAFALGAR ROAD



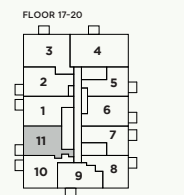
TRAFALGAR ROAD



TRAFALGAR ROAD



TRAFALGAR ROAD



TRAFALGAR ROAD

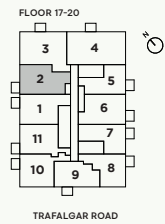
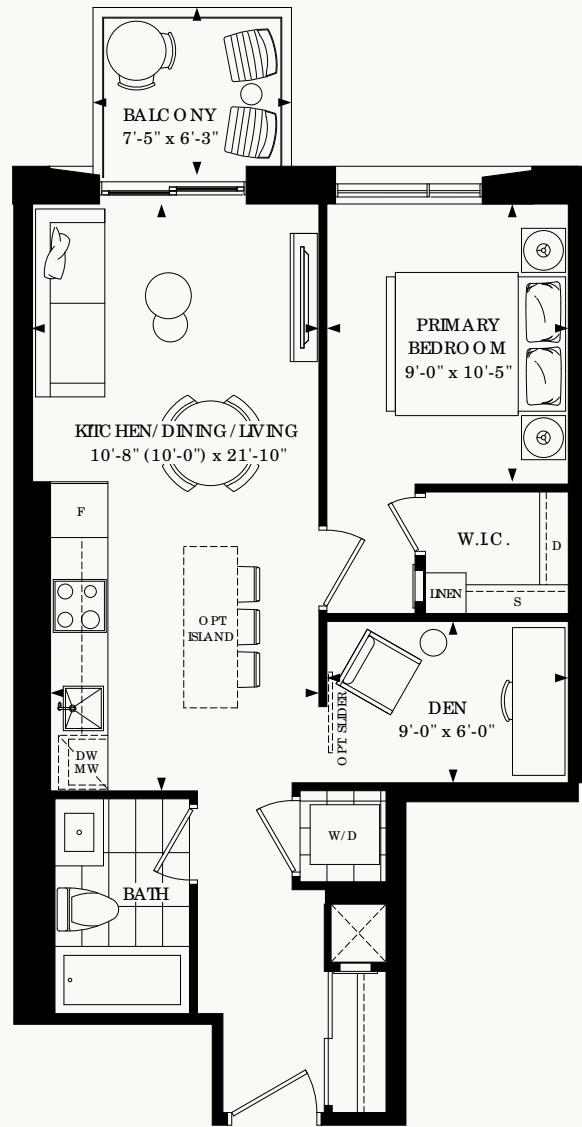
All plans, dimensions and specifications are subject to change without notice. Actual usable floor space may vary from the stated floor area. Column locations, window locations and size may vary and are subject to change without notice. Renderings are artists concept and will change if required by site conditions. Plans, specifications and materials are subject to availability, substitution, modification without notice at sole discretion of Minto Communities Inc. E. & O.E. 0822

All plans, dimensions and specifications are subject to change without notice. Actual usable floor space may vary from the stated floor area. Column locations, window locations and size may vary and are subject to change without notice. Renderings are artists concept and will change if required by site conditions. Plans, specifications and materials are subject to availability, substitution, modification without notice at sole discretion of Minto Communities Inc. E. & O.E. 0822

627

1 BEDROOM + DEN
1 BATHROOM
 Floors 17-20

Indoor Living **627 sq. ft.**
 Outdoor Living **46 sq. ft.**
 Total Living **673 sq. ft.**

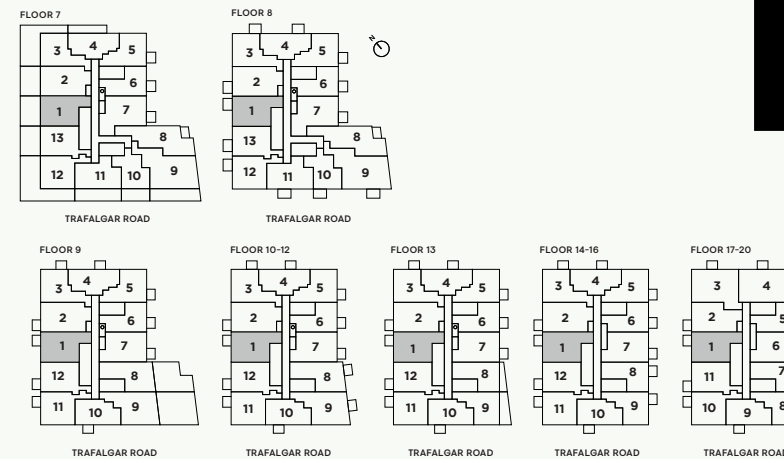
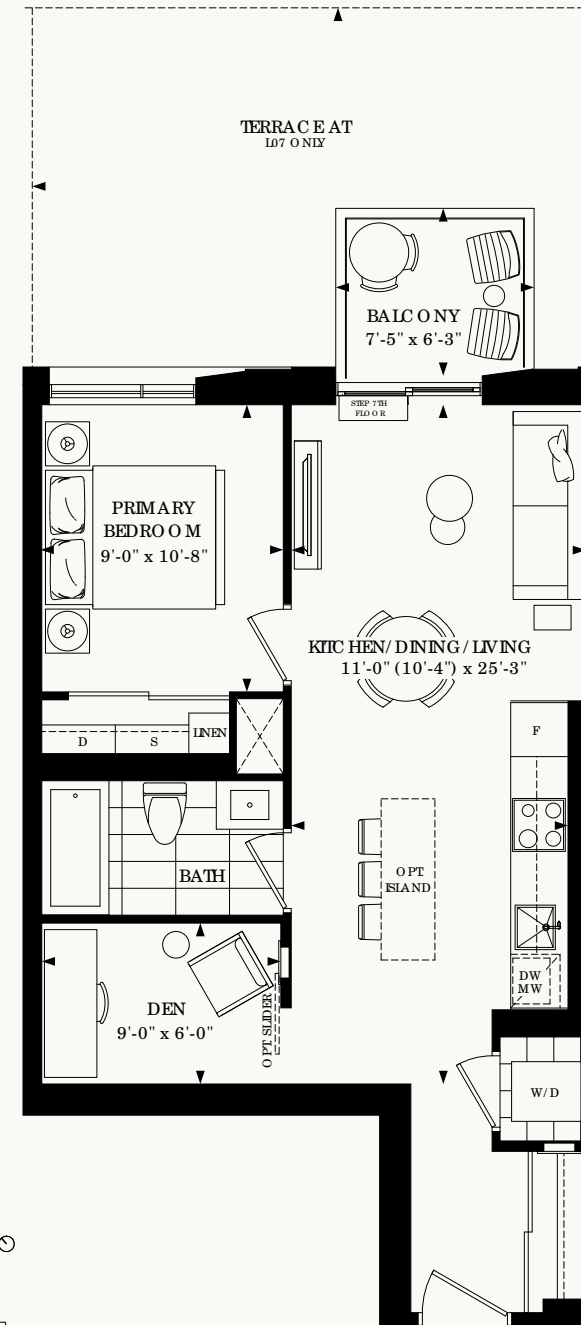


All plans, dimensions and specifications are subject to change without notice. Actual usable floor space may vary from the stated floor area. Column locations, window locations and size may vary and are subject to change without notice. Renderings are artists concept and will change if required by site conditions. Plans, specifications and materials are subject to availability, substitution, modification without notice at sole discretion of Minto Communities Inc. E. & O.E. 0822

649

1 BEDROOM + DEN
1 BATHROOM
 Floors 7-20

Indoor Living **649 sq. ft.**
 Outdoor Living **46 sq. ft.**
 Total Living **695 sq. ft.**

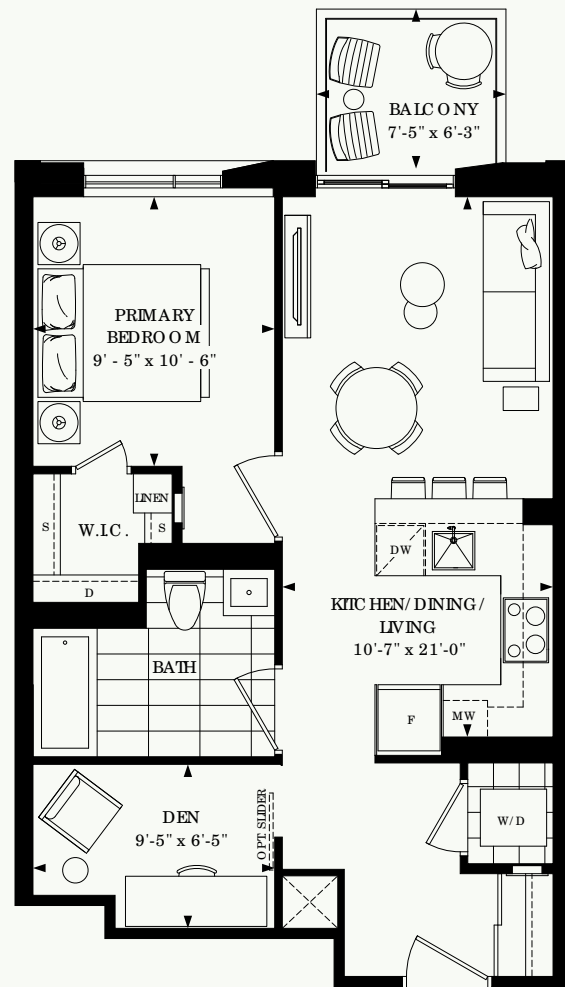


All plans, dimensions and specifications are subject to change without notice. Actual usable floor space may vary from the stated floor area. Column locations, window locations and size may vary and are subject to change without notice. Renderings are artists concept and will change if required by site conditions. Plans, specifications and materials are subject to availability, substitution, modification without notice at sole discretion of Minto Communities Inc. E. & O.E. 0822

650

1 BEDROOM + DEN
1 BATHROOM
 Floors 9-20

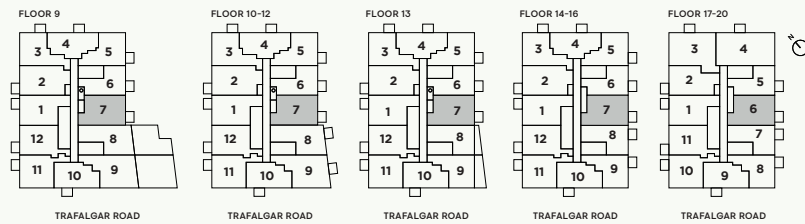
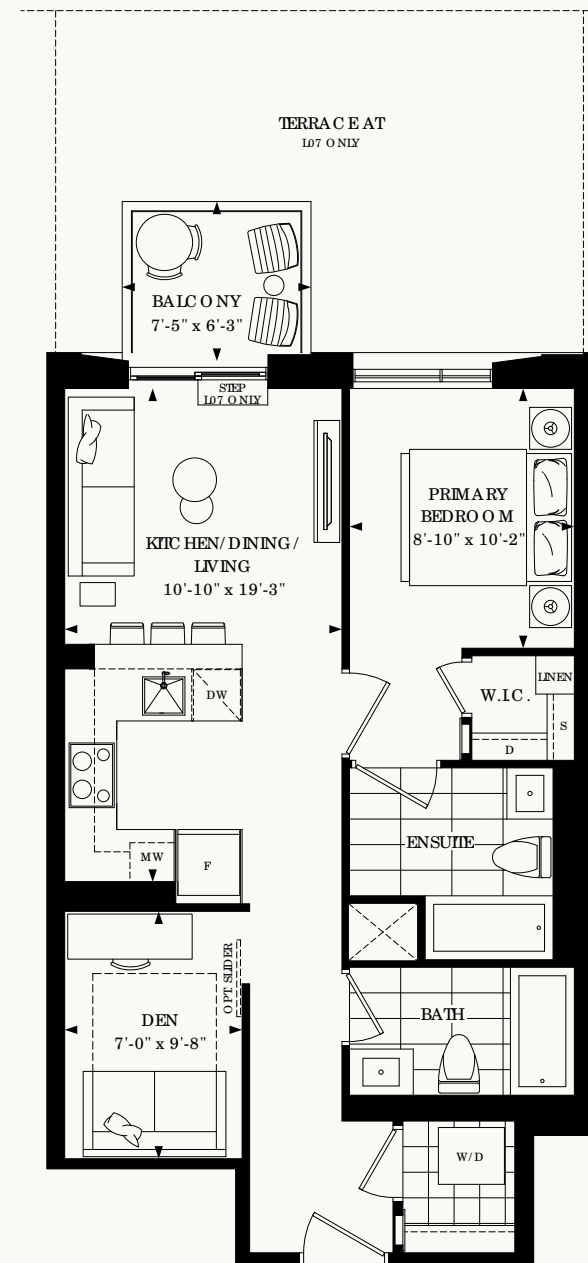
Indoor Living **650 sq. ft.**
 Outdoor Living **46 sq. ft.**
 Total Living **696 sq. ft.**



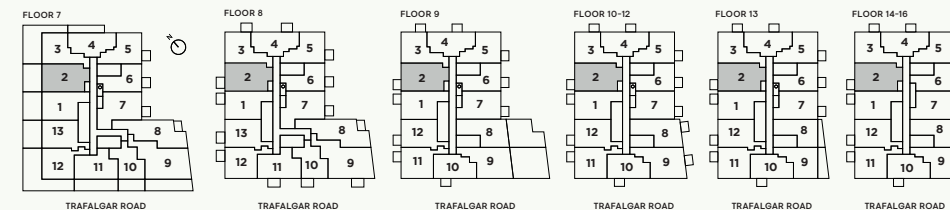
698

1 BEDROOM + DEN
2 BATHROOM
 Floor 7-16

Indoor Living **698 sq. ft.**
 Outdoor Living **46 sq. ft.**
 Total Living **744 sq. ft.**



All plans, dimensions and specifications are subject to change without notice. Actual usable floor space may vary from the stated floor area. Column locations, window locations and size may vary and are subject to change without notice. Renderings are artists concept and will change if required by site conditions. Plans, specifications and materials are subject to availability, substitution, modification without notice at sole discretion of Minto Communities Inc. E. & O.E. 0822

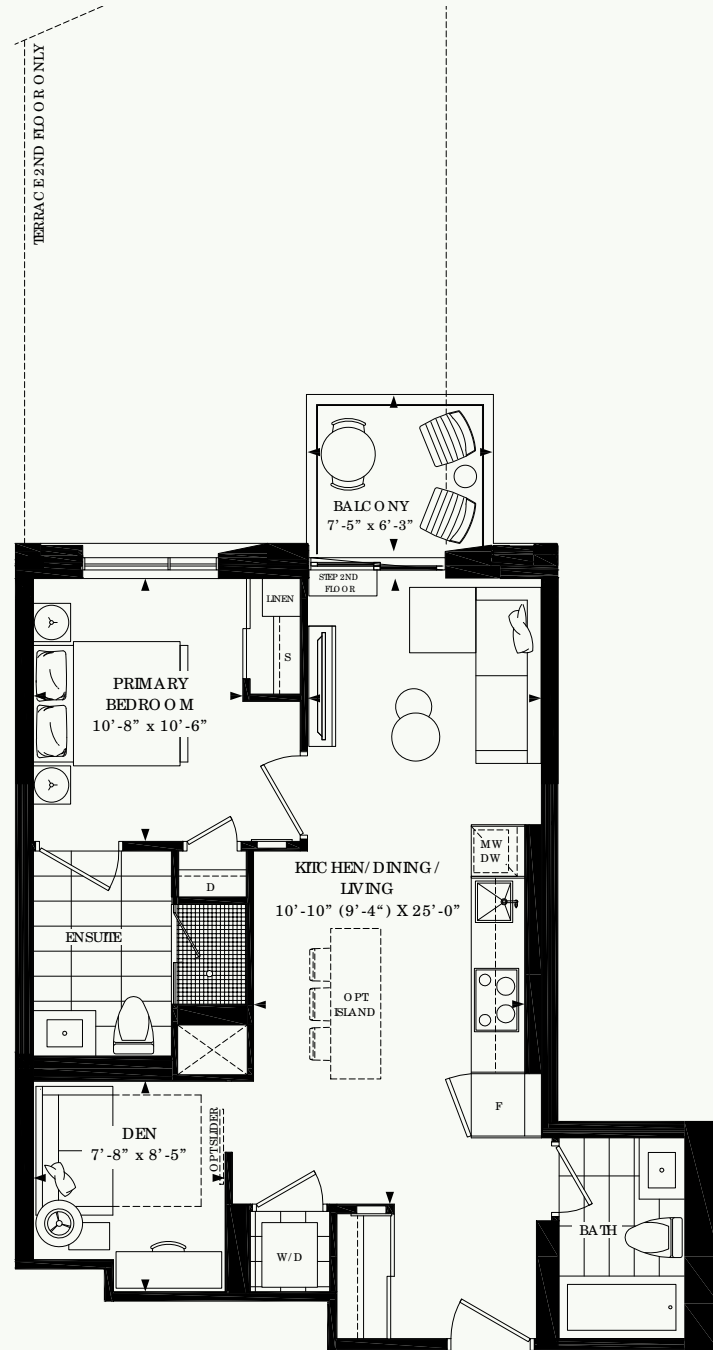


All plans, dimensions and specifications are subject to change without notice. Actual usable floor space may vary from the stated floor area. Column locations, window locations and size may vary and are subject to change without notice. Renderings are artists concept and will change if required by site conditions. Plans, specifications and materials are subject to availability, substitution, modification without notice at sole discretion of Minto Communities Inc. E. & O.E. 0822

710

1 BEDROOM + DEN
2 BATHROOM
 Floors 2-8

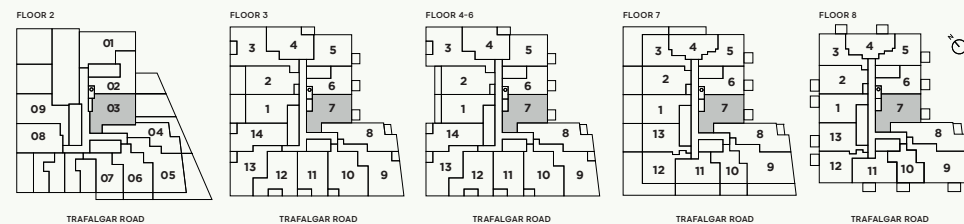
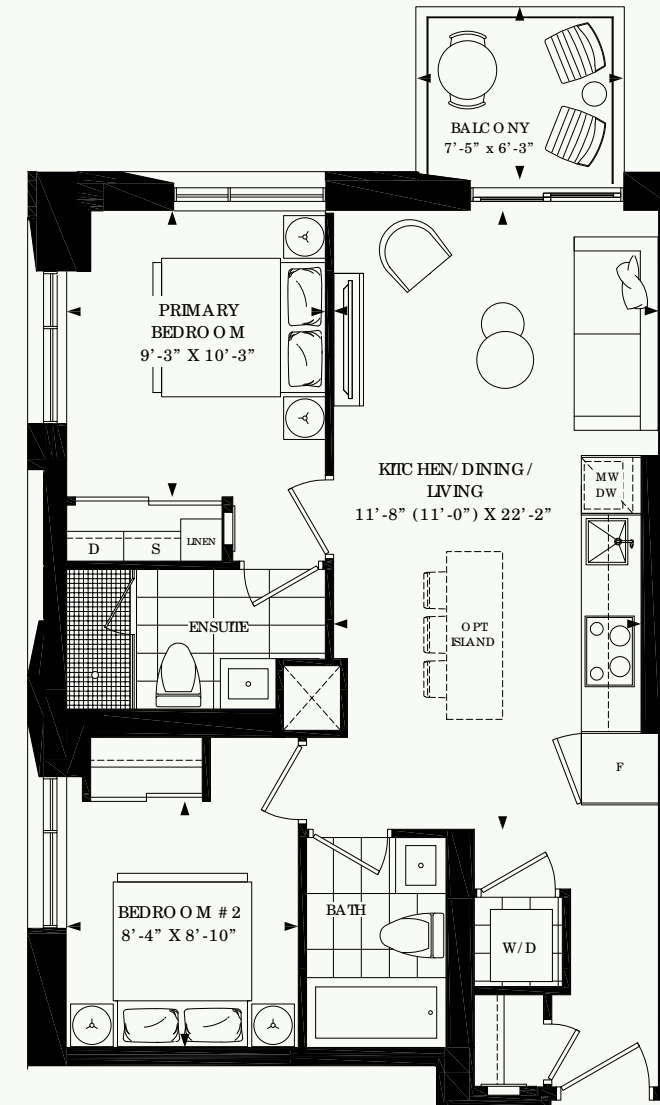
Indoor Living **710 sq. ft.**
 Outdoor Living **46 sq. ft.**
 Total Living **756 sq. ft.**



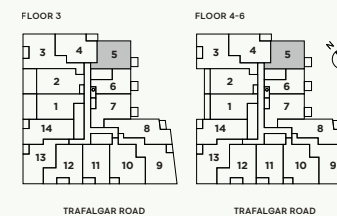
743

2 BEDROOM
2 BATHROOM
 Floors 3-6

Indoor Living **743 sq. ft.**
 Outdoor Living **46 sq. ft.**
 Total Living **789 sq. ft.**



All plans, dimensions and specifications are subject to change without notice. Actual usable floor space may vary from the stated floor area. Column locations, window locations and size may vary and are subject to change without notice. Renderings are artists concept and will change if required by site conditions. Plans, specifications and materials are subject to availability, substitution, modification without notice at sole discretion of Minto Communities Inc. E. & O.E. 0822

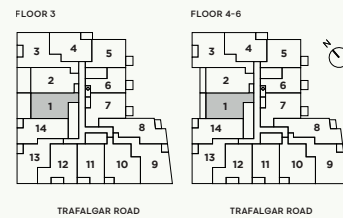
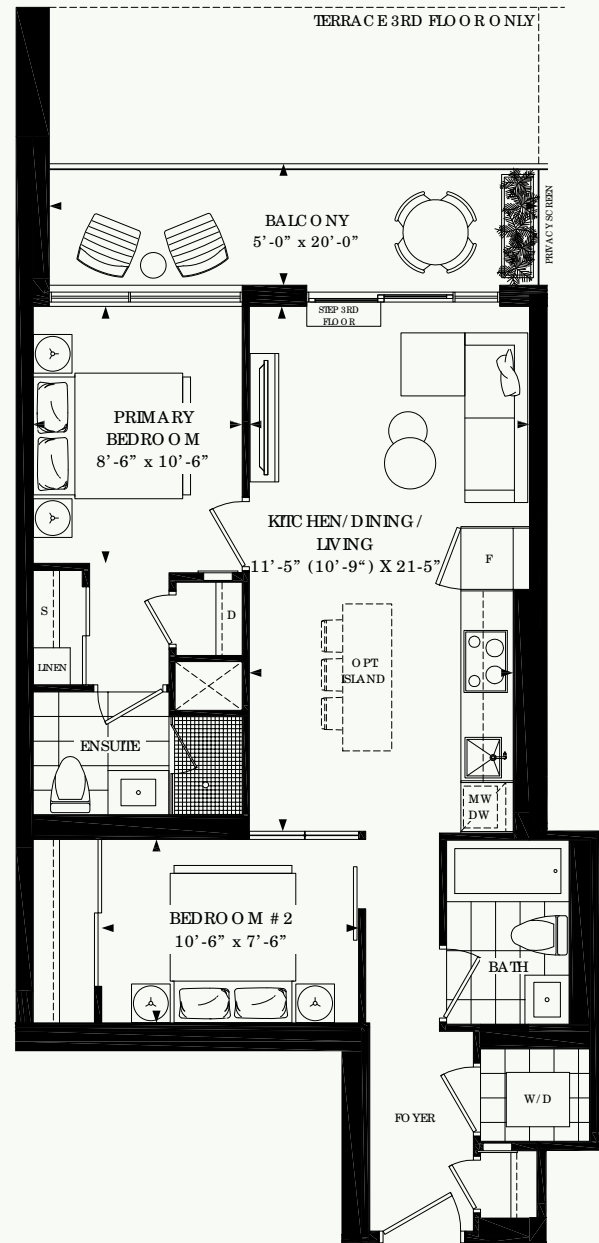


All plans, dimensions and specifications are subject to change without notice. Actual usable floor space may vary from the stated floor area. Column locations, window locations and size may vary and are subject to change without notice. Renderings are artists concept and will change if required by site conditions. Plans, specifications and materials are subject to availability, substitution, modification without notice at sole discretion of Minto Communities Inc. E. & O.E. 0822

756

2 BEDROOM
2 BATHROOM
Floors 3-6

Indoor Living **756 sq. ft.**
Outdoor Living **99 sq. ft.**
Total Living **855 sq. ft.**

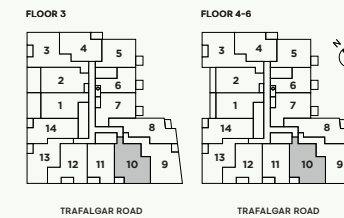
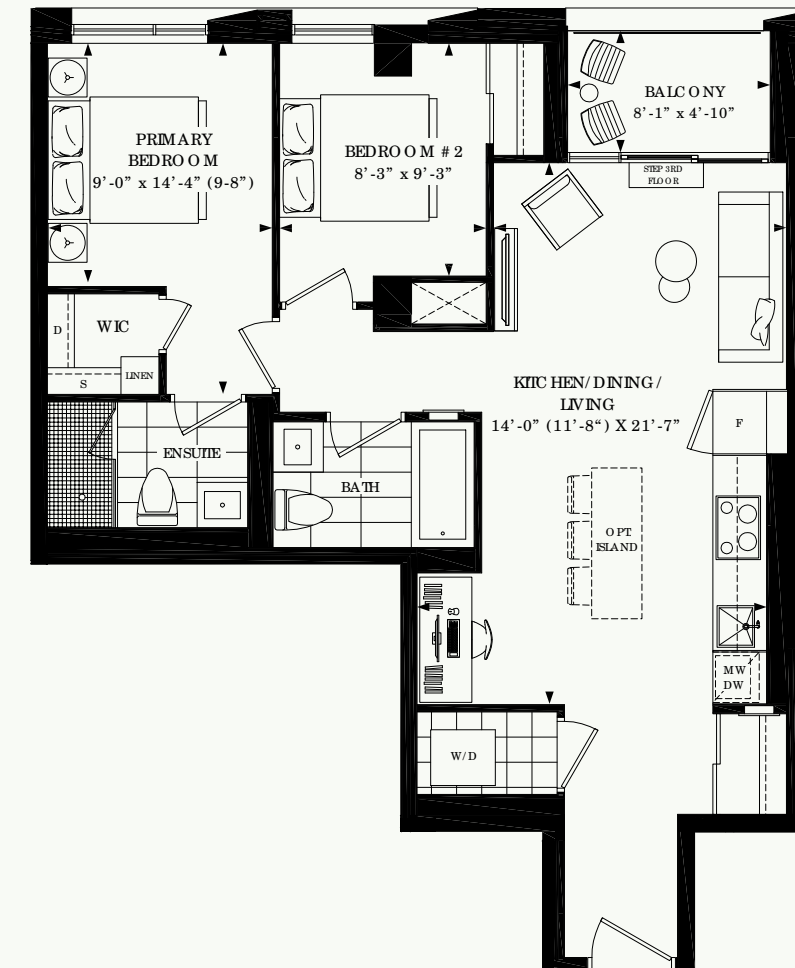


All plans, dimensions and specifications are subject to change without notice. Actual usable floor space may vary from the stated floor area. Column locations, window locations and size may vary and are subject to change without notice. Renderings are artists concept and will change if required by site conditions. Plans, specifications and materials are subject to availability, substitution, modification without notice at sole discretion of Minto Communities Inc. E. & O.E. 0822

805

2 BEDROOM
2 BATHROOM
Floors 3-6

Indoor Living **805 sq. ft.**
Outdoor Living **39 sq. ft.**
Total Living **844 sq. ft.**

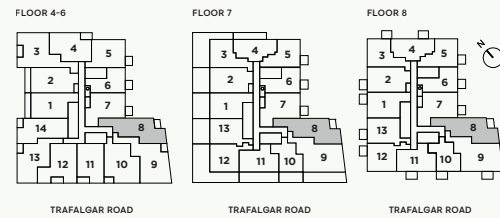
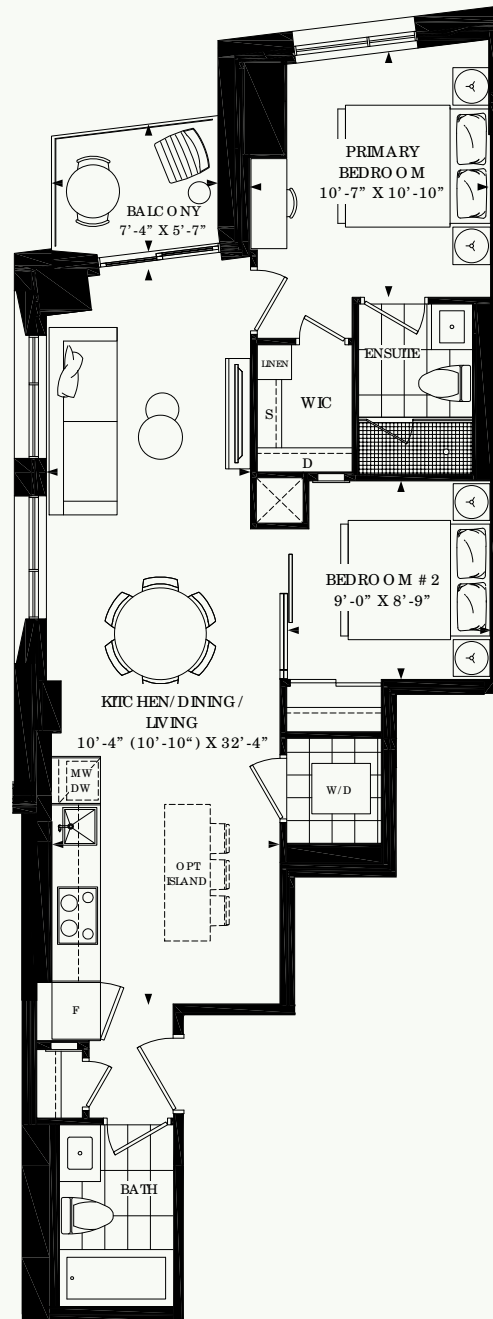


All plans, dimensions and specifications are subject to change without notice. Actual usable floor space may vary from the stated floor area. Column locations, window locations and size may vary and are subject to change without notice. Renderings are artists concept and will change if required by site conditions. Plans, specifications and materials are subject to availability, substitution, modification without notice at sole discretion of Minto Communities Inc. E. & O.E. 0822

831

2 BEDROOM
2 BATHROOM
Floors 4-8

Indoor Living **831 sq. ft.**
Outdoor Living **40 sq. ft.**
Total Living **871 sq. ft.**

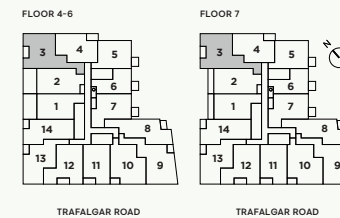
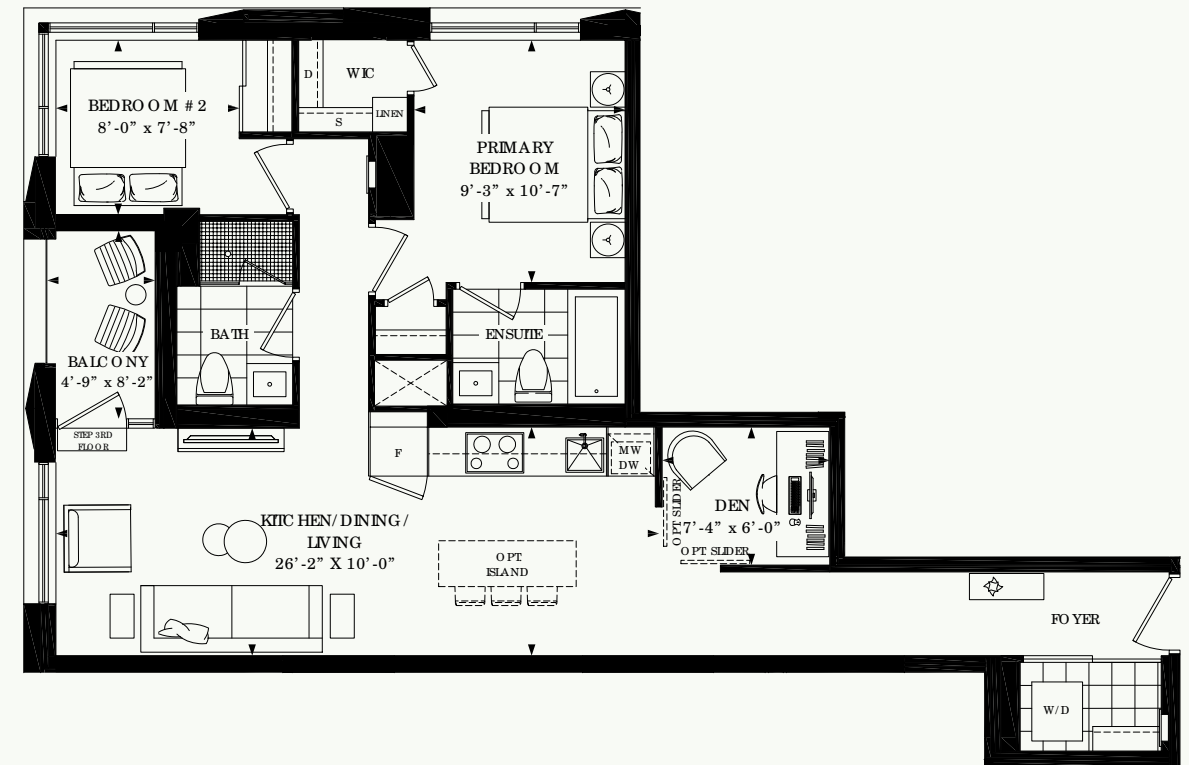


All plans, dimensions and specifications are subject to change without notice. Actual usable floor space may vary from the stated floor area. Column locations, window locations and size may vary and are subject to change without notice. Renderings are artists concept and will change if required by site conditions. Plans, specifications and materials are subject to availability, substitution, modification without notice at sole discretion of Minto Communities Inc. E. & O.E. 0822

918

2 BEDROOM + DEN
2 BATHROOM
Floors 3-6

Indoor Living **918 sq. ft.**
Outdoor Living **38 sq. ft.**
Total Living **956 sq. ft.**

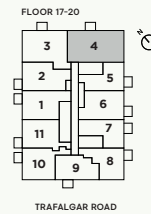
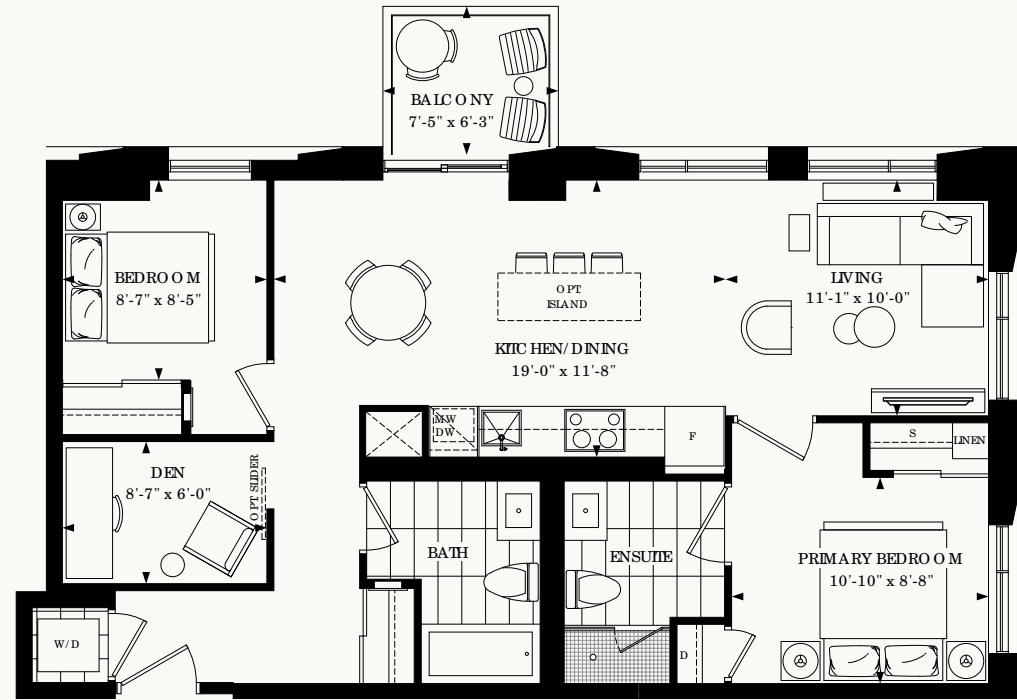


All plans, dimensions and specifications are subject to change without notice. Actual usable floor space may vary from the stated floor area. Column locations, window locations and size may vary and are subject to change without notice. Renderings are artists concept and will change if required by site conditions. Plans, specifications and materials are subject to availability, substitution, modification without notice at sole discretion of Minto Communities Inc. E. & O.E. 0822

945

2 BEDROOM + DEN
2 BATHROOM
 Floors 17-20

Indoor Living **945 sq. ft.**
 Outdoor Living **46 sq. ft.**
 Total Living **991 sq. ft.**



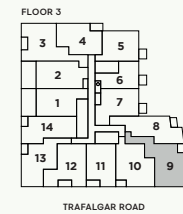
All plans, dimensions and specifications are subject to change without notice. Actual usable floor space may vary from the stated floor area. Column locations, window locations and size may vary and are subject to change without notice. Renderings are artists concept and will change if required by site conditions. Plans, specifications and materials are subject to availability, substitution, modification without notice at sole discretion of Minto Communities Inc. E. & O.E. 0822

TRAFALGAR ROAD

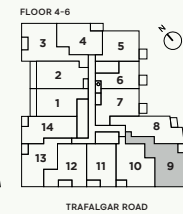
980

2 BEDROOM + DEN
2 BATHROOM
 Floors 3-6

Indoor Living **980 sq. ft.**
 Outdoor Living **42 sq. ft.**
 Total Living **1,022 sq. ft.**



TRAFALGAR ROAD



TRAFALGAR ROAD

All plans, dimensions and specifications are subject to change without notice. Actual usable floor space may vary from the stated floor area. Column locations, window locations and size may vary and are subject to change without notice. Renderings are artists concept and will change if required by site conditions. Plans, specifications and materials are subject to availability, substitution, modification without notice at sole discretion of Minto Communities Inc. E. & O.E. 0822

FEATURES & Finishes

BUILDING FEATURES

- Tower 4C is a 20 storey tower at the heart of Minto Communities' North Oak Community and is imaginatively designed by BDP Quadrangle.
- Spectacular indoor amenity features designed by FIGUR3.
- Unique terraced Outdoor amenity garden and landscaping designed by landscape architect NAK Design Strategies.
- The building and amenities are inspired by a blend of transitional and modernist styles and a focus on health, wellness, community and connecting to nature.
- High speed elevators serve residences, parking and amenities.
- Exclusive Promenade
 - Landscaped boulevard running along the Athabasca pond, that provides provide access to the pond, the extensive municipal trail network, and connection to plazas.
 - Elegantly designed entry plaza with bicycle racks and six drop-off parking stalls conveniently located adjacent to the main entrance and views overlooking the Athabasca pond.
- Exclusive "Neighbourhood Gem", a distinctive glass arcade that fronts onto the terraced amenity garden, around which all amenities connect, features:
 - Lobby with dedicated service team consisting of concierge (16 hr per day, 7-days per week) and property management shared with the larger development.
 - Abundant parcel storage.
 - Dramatic entry lounge with integrated planters, benches, and unique feature wall.
 - Co-working lounge with two individual focus rooms for virtual meetings and phone calls, coffee and printer station, and banquets wired for power.
 - Water bar with filtered hot, cold and sparkling water.
 - Pet wash with direct access to the exterior.
 - Bike wash and repair station in the underground garage.
- A stunning Social Club that features:
 - Kitchenette and Bar with sink and speed oven.
 - Dining and lounge with TV for events and dinner parties.
 - Direct access to outdoor BBQ and lounge to extend social space in the warmer months.
- Lush terraced outdoor Amenity garden at-grade that features:
 - Firepit and seating set into lush planters.
 - Common-use BBQ terrace with trellis and bistro tables.
 - Outdoor high-top bar and worktable integrated around stunning tree canopy.
 - Bookable outdoor party room terrace with dramatic bar, BBQ and dining table and connected to bookable fire-pit for intimate summer gatherings.

- Entry Plaza facing Trafalgar Road connected to Multi-Use trail that features integrated tree bench and feature screens.
- Lush terraced planters with native plants create a calm natural setting.

HEALTH, WELLNESS AND SUSTAINABLE FEATURES

- Health and Wellness Amenities feature:
 - State of the art light-filled fitness space with free-weights, benches and racks, machines, open fitness studio space, and water bar with filtered hot, cold and sparkling water.
 - Cardio equipment featuring elliptical machines, bikes and treadmills.
 - Connected yoga, free fitness and exercise studio with TV connected to Wellbeats, or equivalent system for virtual classes
 - Infrared sauna.
- Biophilic design principles to help support resident physiological and psychological health including:
 - Natural and textured materials with a contemporary feel (i.e. wood, stone, fabrics, etc.) throughout the building providing connection to nature.
 - Biomorphic patterns in amenity spaces and common elements enhance perception of these spaces, including dramatic "rammed earth" inspired feature wall at Lobby Entrance.
 - Plants within interior amenity spaces, exterior amenities and building landscaping reinforce connection to nature.
 - Interior and exterior amenity spaces designed to be visually and physically interconnected to each other and natural features beyond.
 - Design allows abundant natural light throughout the building and a view of the surrounding natural features.
 - Pollinator Garden at-grade.
- Connection and views to the Athabasca Pond and easy access to the extensive trail network.
- High-performance Geoexchange Community Energy system ensures reliable, comfortable and cost-efficient heating and cooling that significantly reduces the community's carbon footprint.
- Energy Recovery Ventilator (ERV) promotes improved comfort and interior air quality by providing fresh, filtered outdoor air directly to the suite. The system exchanges the energy in exhausted air and uses it to precondition incoming outdoor air to reduce heating and cooling costs and optimizing humidity levels.
- Suites are designed and constructed to be compartmentalized to avoid air transfer from common corridors to suites. A sample of suites are tested to verify air-tightness. This also helps to reduce noise transfer within the building.
- In-suite under-counter kitchen waste sorting system for ease of sorting organics, recycling and general waste.

- Electric Vehicle (EV) charging stations included for 3% of parking stalls as determined by the builder. EV infrastructure capacity for additional 10% of spaces includes increased transformer capacity, empty conduit and junction boxes installed in select locations in the underground garage.
- Convenient bicycle storage and bike repair station and wash with maintenance tools for ease of access to alternative and healthy modes of transportation.
- Sub-metering of electricity and water to promote conscientious consumption.
- In-suite point-of-use water filtration on kitchen sink.
- Water efficient plumbing fixtures to provide superior performance and efficiency.
- Drip irrigation ensures efficient use of water for landscaping features.
- Building Automation System (BAS) to monitor, control, and ensure efficient and comfortable operation of building-wide HVAC, lighting and safety systems.
- Select ENERGY STAR® appliances.
- LED lighting throughout the building. Energy efficient, long lasting, mercury-free and low maintenance.
- Adaptive lighting in the Neighbourhood Gem adjusts lighting based on ambient conditions.
- Chemical free cleaning system for use in all common elements to help improve indoor air quality.
- Selection of Low Volatile Organic Compound (VOC) paints and low VOC sealants, adhesives, and flooring materials improves indoor air quality. Suites painted white throughout.
- Smoke free building promotes healthy indoor air quality.
- Amenity areas receive enhanced air filtration system reducing airborne pollutants such as VOCs, odours and particulate matter.
- Motion sensor common area lighting in corridors, stairwells and parking garage reduces lighting levels when areas are not occupied, reducing costs associated with lighting.
- CO2 controlled ventilation in amenity spaces to ensure efficient and optimal control of air quality in amenity spaces.
- CO controlled ventilation in the parking garage to ensure efficient and safe control of air quality within the parking garage.

- Targeting ENERGY STAR® Multifamily High Rise certification. Performance-tested efficiency, third-party verified inspections and government-backed, ENERGY STAR® is one of the most trusted brands in the world.

SMARTER LIVING FEATURES

- Smart Home System controlled via personal mobile devices include:
 - Digital suite entry door lock including remote operation for guests.
 - Remote visitor management including registration, remote camera, and main entrance access.
 - Integrated suite security and monitoring.
 - Thermostat control.
 - Package notifications.
 - Integrated alarm notifications.
 - Community messaging and notification system.
 - Amenity booking (where required) and access.
 - Remote garage door entry and license plate recognition.
 - Touchless path of travel through the building (entries, lobby, and amenities).

- All main entrances and exits with closed circuit video system.

- Wi-fi throughout the building including all indoor and outdoor amenities and common elements.

- Space saving double hanging clothes rod and linen shelving in portion of primary bedroom closet to maximize storage, as per applicable plan.

- In-slab ductwork in select locations to optimize the number of in-suite bulkheads.

- Integrated kitchen pantry for additional storage.

LIVING AND SLEEPING AREA FEATURES

- Approximately 9'-0" ceiling heights throughout. At-grade two-storey lofts feature 10'6" ceiling height on ground floor. Ceiling heights except as required by mechanical, electrical, and architectural features.

- Smooth ceiling finish throughout.

- Choice of quality engineered laminate flooring from builder's standard selections, except in tiled areas, as per applicable plan.

- Approximately 4" baseboards with approximately 2 ¼" casing on all interior swing doors throughout.

- Contemporary slab painted interior swing doors, as per applicable plan. One style throughout.

- Satin chrome hardware on all swing doors.

- White flat panel sliding closet doors, as per applicable plan.

- Laundry areas receive 13"x13" white ceramic tile flooring, as per applicable plan. Laundry rooms located within bathrooms receive porcelain tile flooring to match bathroom flooring, as per applicable plan.

- Telephone, cable and high speed internet access via fibre optic distribution, available in living room, den and bedrooms.

- Stacked energy and water saving front loading 24" white washer and ENERGY STAR® qualified dryer vented to exterior.

- Capped ceiling outlet with switch for bedrooms, dens, and living areas.

- Designer selected ceiling mounted fixture at entry, as per applicable plan.

- 2 storey suites receive stained finish oak stairs, oak veneer stringer and nosing. Stained finish oak handrail with choice of stained finish square style oak pickets and posts.

KITCHEN FEATURES

- Choice of Quartz countertop from builder's standard selection.

- Designer cabinetry including a convenient bank of drawers, pantry tower and under cabinet lighting, as per applicable plan. Choice of cabinetry finishes and hardware from builder's standard selections.

- Choice of backsplash tile from builder's standard selections.

- Single basin undermount stainless steel sink with single lever faucet and convenient pulldown spray.

- Designer selected ceiling mounted light fixture

- Suites up to 667sf receive quality appliances including:
 - 24" stainless steel ENERGY STAR® qualified refrigerator.
 - 24" fully integrated ENERGY STAR® qualified dishwasher with cabinetry matching front panel.
 - 24" 4-burner electric cooktop.
 - 24" hood fan integrated into cabinetry.
 - 24" built-in stainless steel wall oven.
 - Stainless steel microwave.

- Suites 668sf and larger receive quality appliances including:
 - 30" Stainless steel ENERGY STAR® qualified refrigerator

DISCLAIMER

- The Vendor reserves the right, with respect to any aspect of construction, finishing or equipment, to make substitutes and changes to the information contained herein without notices; so long as the Vendor's sole and unreviewable discretion, any substituted materials and/or changes are of at least comparable quality.
- Floors and specific finishes will depend on Vendor's packages as selected. Upon request by the Vendor, the Purchaser shall meet with the Vendor or its representative and select certain colours and materials from Vendor's finish packages.
- The Vendor shall not be responsible for shade differences occurring from different dye lots or characteristics of natural material, including with respect to tiles, carpets, hardwood flooring, kitchen

- 24" fully integrated ENERGY STAR® qualified dishwasher with cabinetry matching front panel
- 30" 4-burner electric cooktop
- 30" hood fan integrated into cabinetry
- 30" built-in stainless steel wall oven
- Stainless steel microwave

BATHROOM & ENSUITE FEATURES (AS PER APPLICABLE PLAN)

- Choice of 12"x24" tile flooring from builder's standard selections.

- Designer cabinetry with choice of cabinetry finish and hardware from builder's standard selections.

- Choice of Quartz countertop from builder's standard selections.

- Undermount sink as per plan.

- Mirror above vanity.

- Water saving single lever faucets and shower heads with pressure balanced temperature controlled shower valves included.

- Soaker tub or walk-in shower as per applicable plan. Choice of 4"x16" ceramic wall tile tub/shower surround to ceiling from builder's standard selections. Choice of 2"x2" mosaic floor tile for walk-in showers from builder's standard selections.

- Frameless glass shower divider and door for walk in showers, as per applicable plan.

- Water-saving plumbing fixtures and Single flush toilets throughout to save water and money.

- Chrome bathroom accessories to include towel bar and toilet tissue dispenser.

- Bathroom vented to exterior, through energy recovery ventilator's two speed fan, while transferring heat energy to the ERV. High speed setting user-controlled by a bathroom timer.

- Designer selected wall sconce, as per applicable plan.

- Designer selected wall sconce, as per applicable plan.

TERRACES (AS PER APPLICABLE PLAN)

- Hose bib.

- cabinets, trim and doors, as the case may be. Details of the entry doors and other design features may not be exactly as shown on renderings.
- All dimensions are subject to normal construction variances. Dimensions including ceiling heights, sizes, specifications, layouts and materials are approximate and subject to change without notice.
- The installation of some features and finishes may vary by suite design and normal construction variances.
- Subject to change without notice. E.&O.E.