

## SHIFT

1245-1261 Sq. Ft.\* 1261 Sq ft

#38 as built Sept 2024

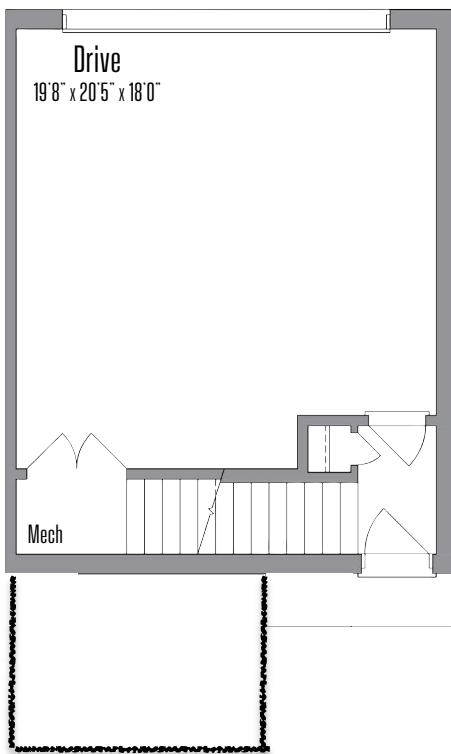
2 Beds

2 Bath

Modern Farmhouse

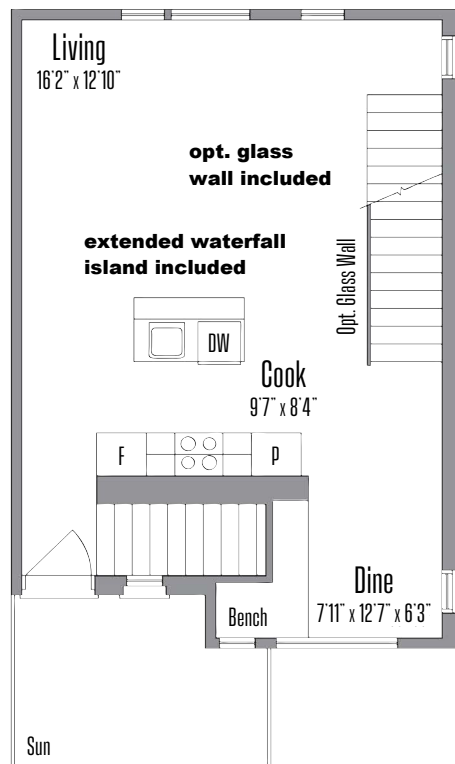
\*Size based on end or internal unit condition.

### GROUND FLOOR

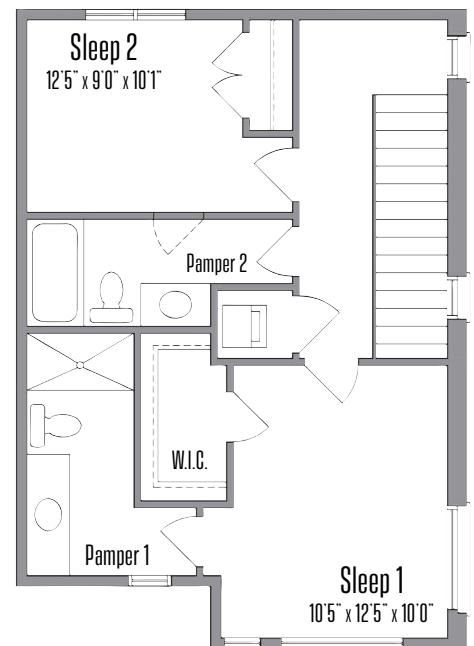


**enhanced ground floor patio included**

### MAIN FLOOR



### THIRD FLOOR



# SEAN.

# RAIN WATER 339 VETERANS

## SHIFT

1245 - 1261 Sq. Ft.\* 1245 Sq ft

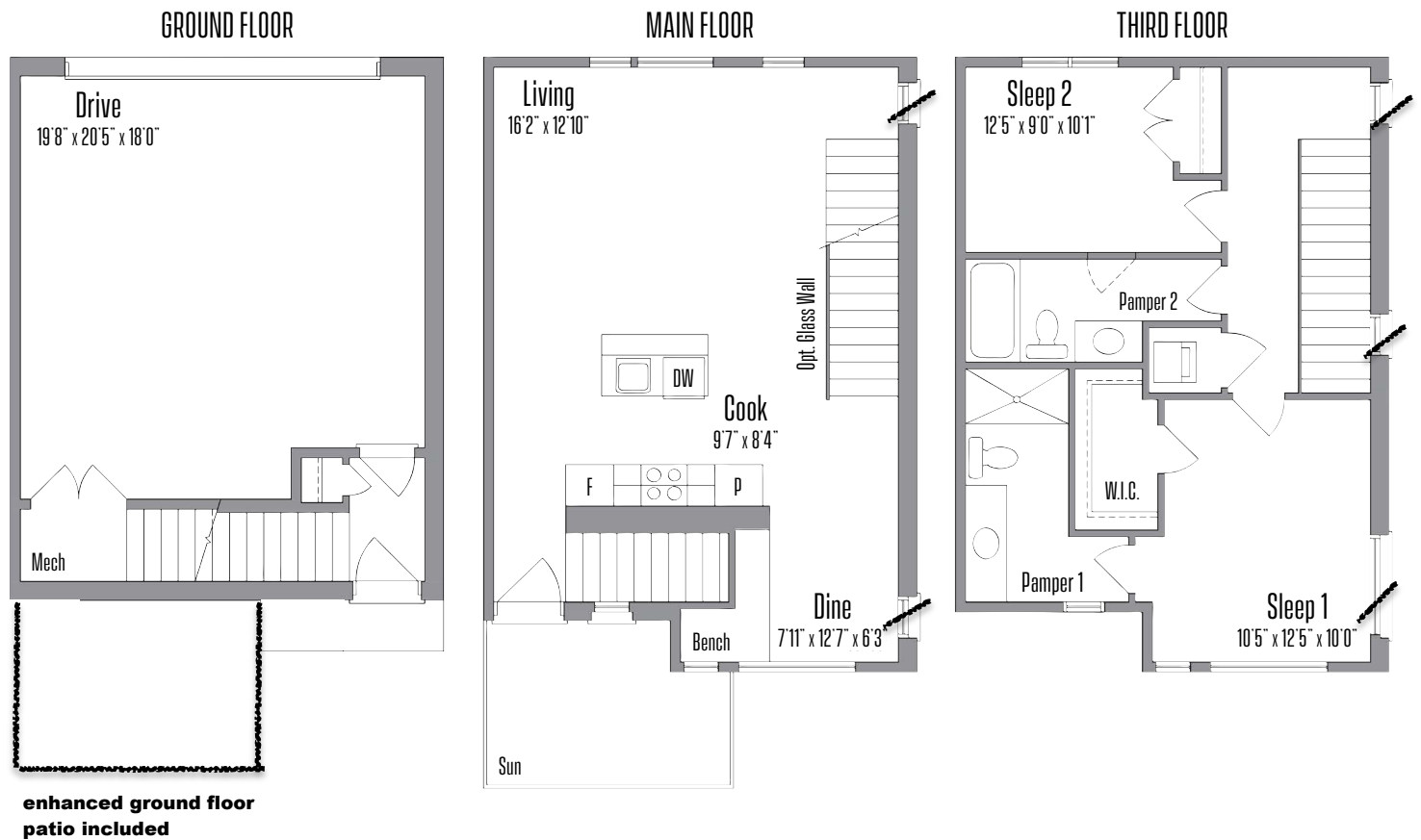
#36 as built Sept 2024

2 Beds

2 Bath

Modern Farmhouse

\*Size based on end or internal unit condition.



ALL AREAS AND STATED ROOM DIMENSIONS ARE APPROXIMATE. FURNITURE IS NOT INCLUDED. SIZES AND SPECIFICATIONS ARE SUBJECT TO CHANGE WITHOUT NOTICE. ACTUAL USABLE FLOOR AREA MAY VARY FROM STATED FLOOR AREA. END WALL WINDOWS SHOWN FOR END UNIT CONDITION ONLY. WINDOWS ON SIDE WALLS ARE SHOWN FOR END UNIT CONDITION ONLY, AND ARE NOT REPRESENTATIVE FOR INTERNAL UNIT CONDITION. ALL RENDERINGS AND HOME SITINGS ARE ARTIST'S IMPRESSIONS. E. & O. E.

## ACTIVE

1751-1775 Sq. Ft.\*

3 Beds, Opt. 4

3 Bath, Opt. 3.5, 4

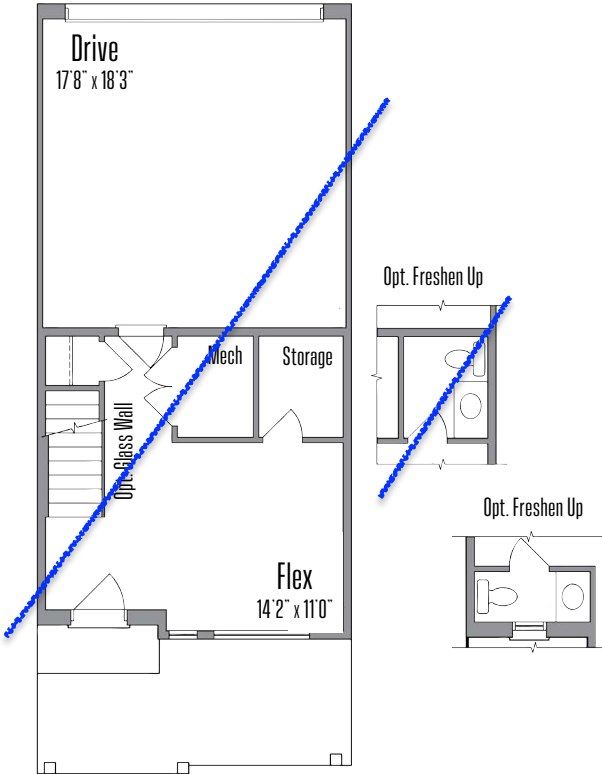
Modern Farmhouse

~~Homes #22 & #24 will be constructed without end unit condition main and third floor windows, as per O.D.C. E&OE.~~

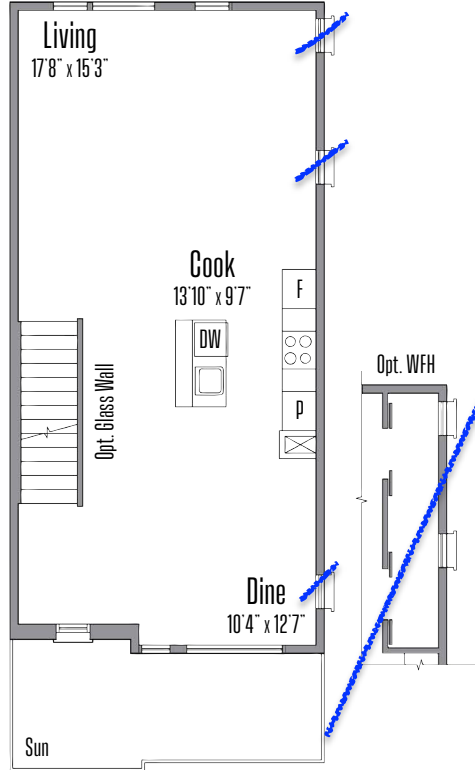
#30 Active as built Sept 2024

\*Size based on end or internal unit condition.

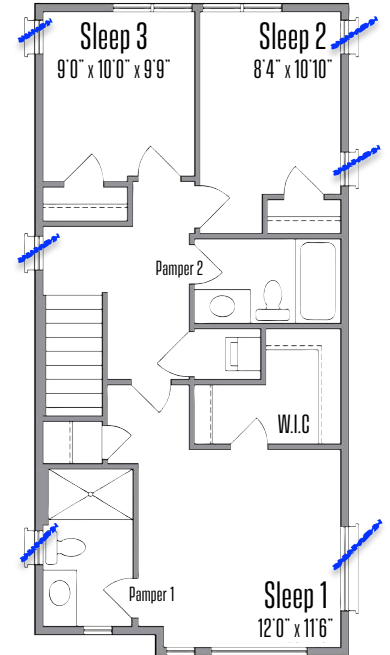
GROUND FLOOR



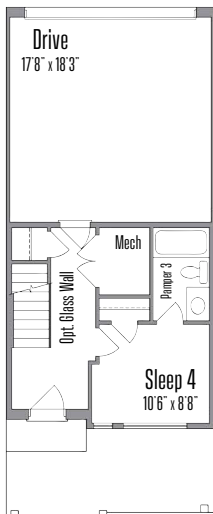
MAIN FLOOR



THIRD FLOOR



ALT. GROUND FLOOR



# SEAN.

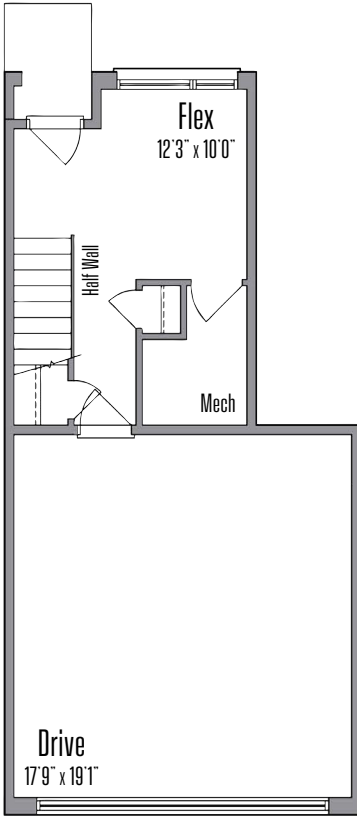
## COOL

1540 Sq. Ft.  
 1766 Sq. Ft. w/ Loft  
 3 Beds  
 2.5 Bath, Opt. 3, 3.5, 4, 4.5  
 Modern Georgian

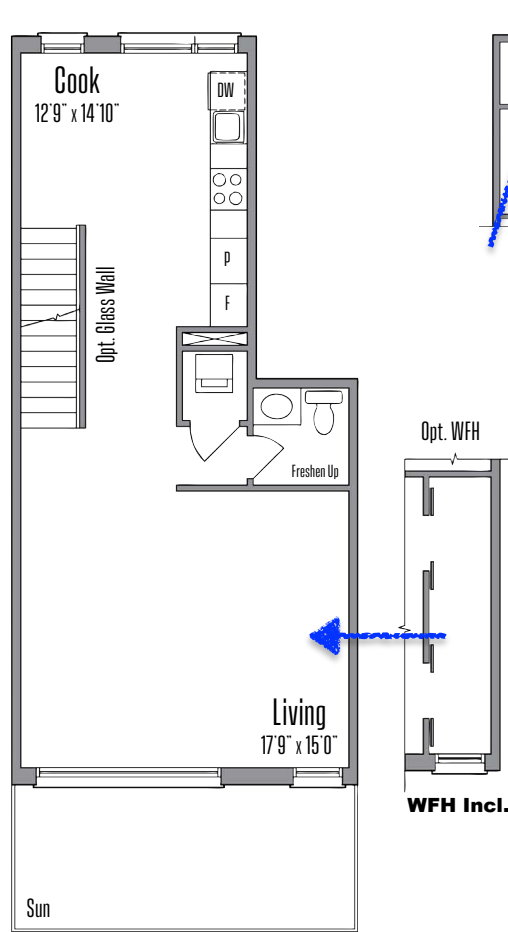
# RAIN WATER 339 VETERANS

#23 as built Sept 2024

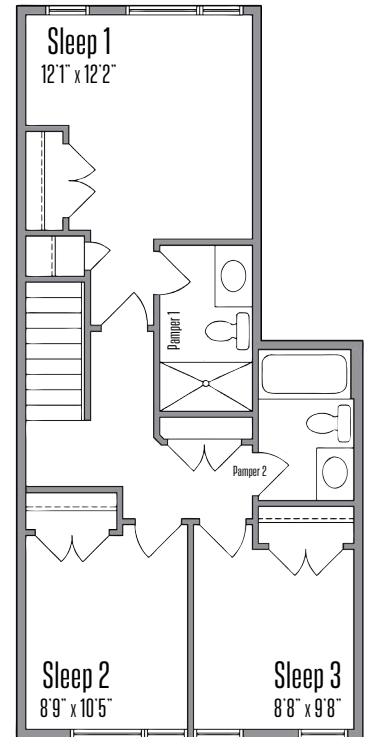
GROUND FLOOR



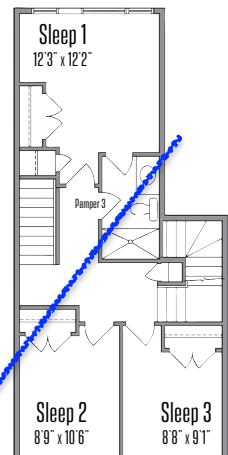
MAIN FLOOR



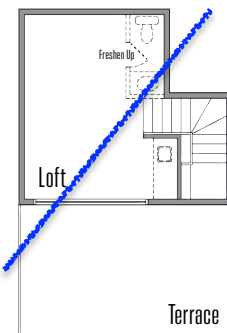
THIRD FLOOR



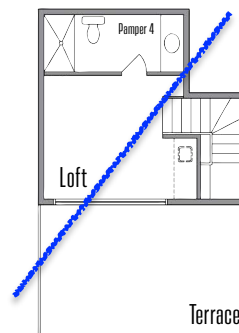
ALT. THIRD FLOOR (LOFT)



LOFT



LOFT WITH PAMPER



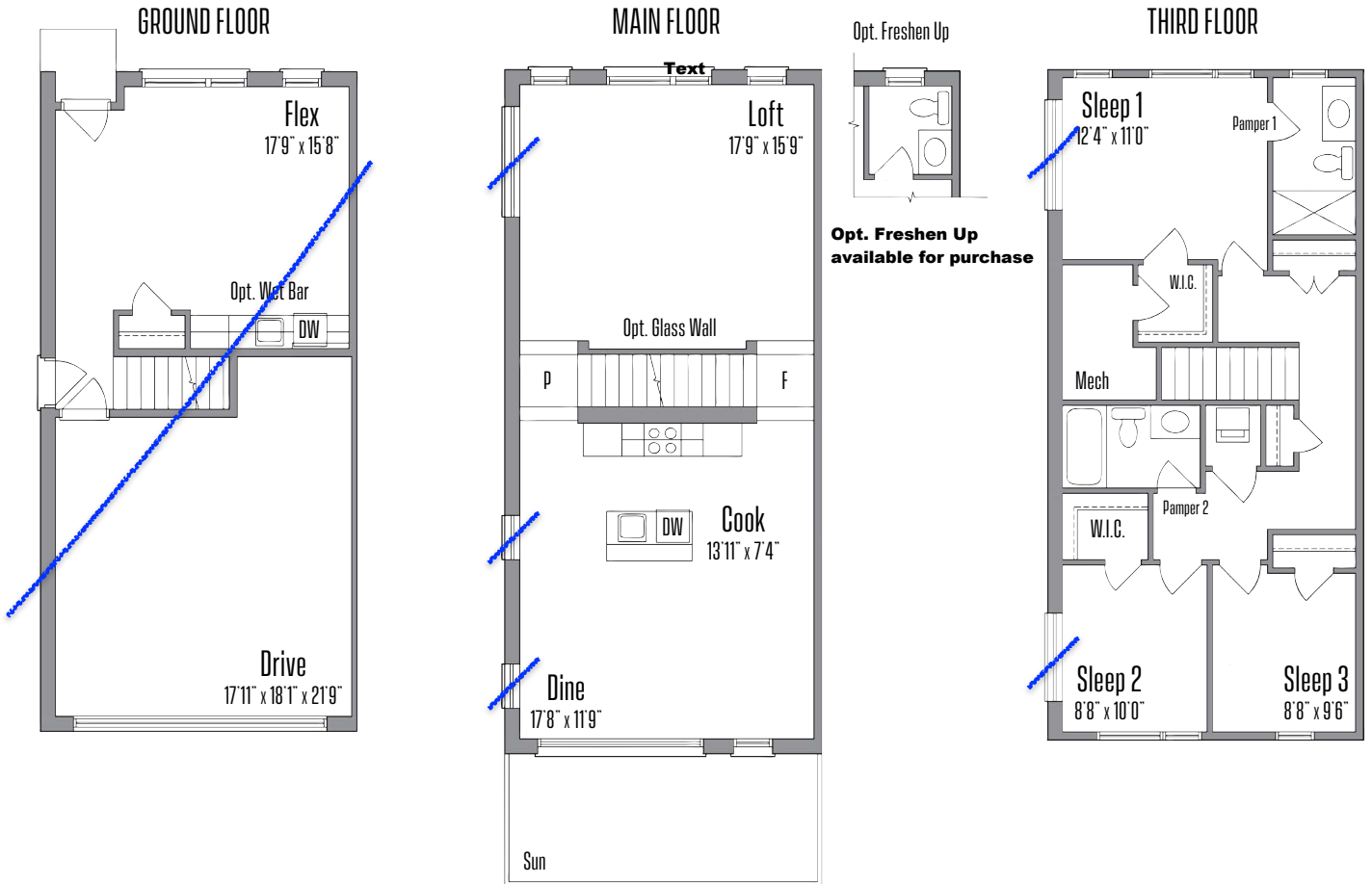
ALL AREAS AND STATED ROOM DIMENSIONS ARE APPROXIMATE. FURNITURE IS NOT INCLUDED. SIZES AND SPECIFICATIONS ARE SUBJECT TO CHANGE WITHOUT NOTICE. ACTUAL USABLE FLOOR AREA MAY VARY FROM STATED FLOOR AREA. ALL RENDERINGS AND HOME SITINGS ARE ARTIST'S IMPRESSIONS. E. & O. E.

## FRESH

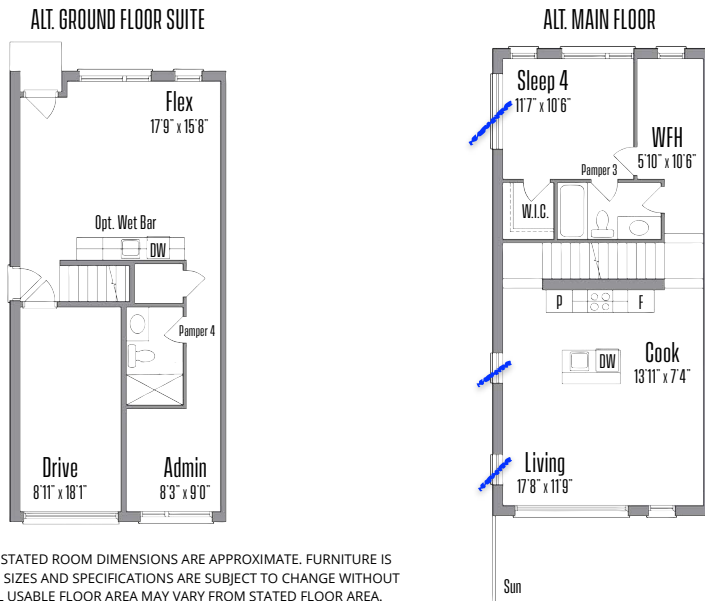
1950 Sq. Ft.  
 2156 Sq. Ft. w/ alt Suite  
 3 Beds, Opt. 4, 5  
 2 Bath, Opt. 2.5, 3, 3.5, 4  
 Modern Georgian

Homes #17 & #19 will be constructed without end unit condition main and third floor windows, with the ground floor side yard door fire rated, as per O.B.C. E&OE.

#17 Fresh as built Sept 2024



#17 constructed including Alt. Ground Floor Suite  
 opt wet bar is available for purchase



Alt main floor is available for purchase

ALL AREAS AND STATED ROOM DIMENSIONS ARE APPROXIMATE. FURNITURE IS NOT INCLUDED. SIZES AND SPECIFICATIONS ARE SUBJECT TO CHANGE WITHOUT NOTICE. ACTUAL USABLE FLOOR AREA MAY VARY FROM STATED FLOOR AREA. ALL RENDERINGS AND HOME SITINGS ARE ARTIST'S IMPRESSIONS. E. & O. E.

## ACTIVE

1751-1775 Sq. Ft.\*

3 Beds, Opt. 4

3 Bath, Opt. 3, 5, 4

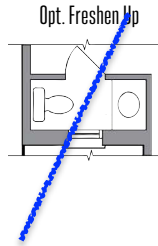
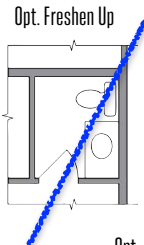
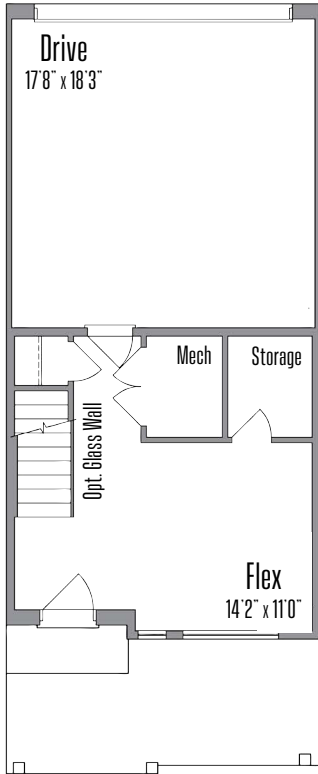
Modern Farmhouse

~~Homes #22 & #24 will be constructed without end unit condition main and third floor windows, as per O.D.C. E&OE.~~

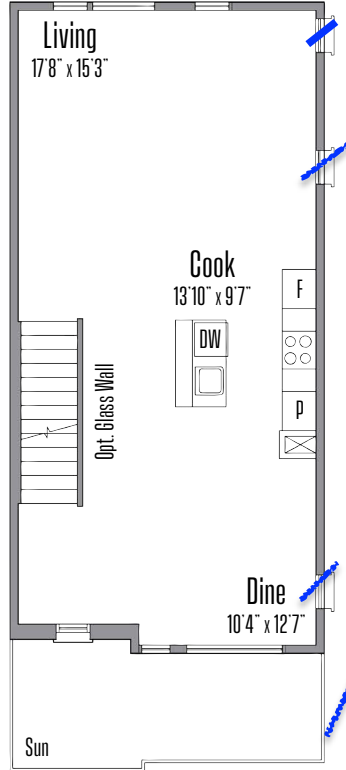
#12 Active as built Sept 2024

\*Size based on end or internal unit condition.

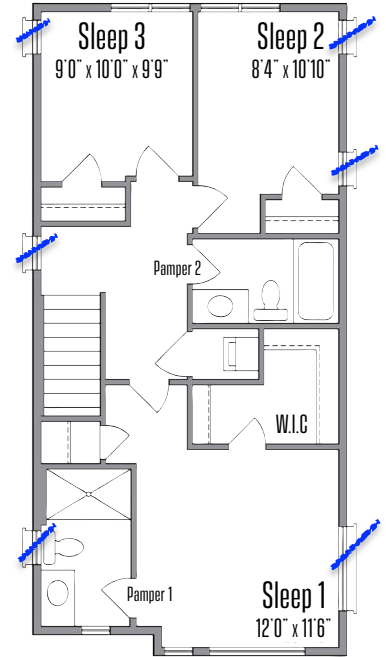
GROUND FLOOR



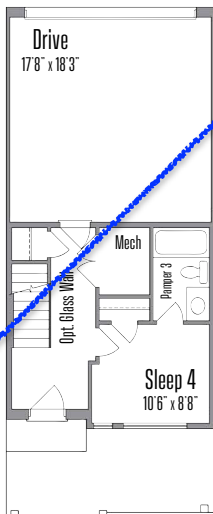
MAIN FLOOR



THIRD FLOOR



ALT. GROUND FLOOR



ALL AREAS AND STATED ROOM DIMENSIONS ARE APPROXIMATE. FURNITURE IS NOT INCLUDED. SIZES AND SPECIFICATIONS ARE SUBJECT TO CHANGE WITHOUT NOTICE. ACTUAL USABLE FLOOR AREA MAY VARY FROM STATED FLOOR AREA. END UNIT WINDOWS SHOWN FOR END UNIT CONDITION ONLY. WINDOWS ON SIDE WALLS ARE SHOWN FOR END UNIT CONDITION ONLY, AND ARE NOT REPRESENTATIVE FOR INTERNAL UNIT CONDITION. ALL RENDERINGS AND HOME SITINGS ARE ARTIST'S IMPRESSIONS. E . & O . E .

## ACTIVE

1751-1775 Sq. Ft.\*

3 Beds, Opt. 4

3 Bath, Opt. 3.5, 4

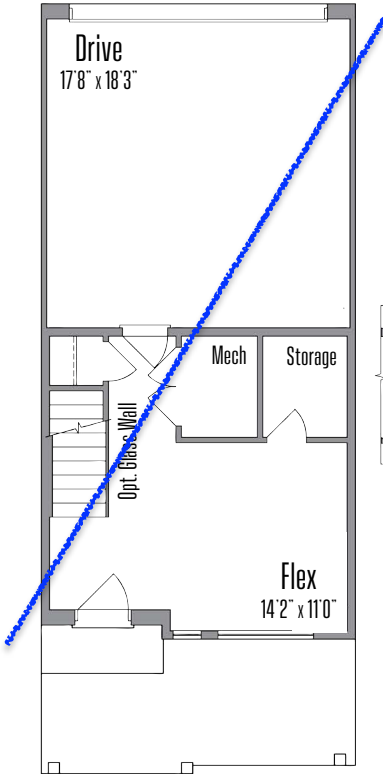
Modern Farmhouse

\*Size based on end or internal unit condition.

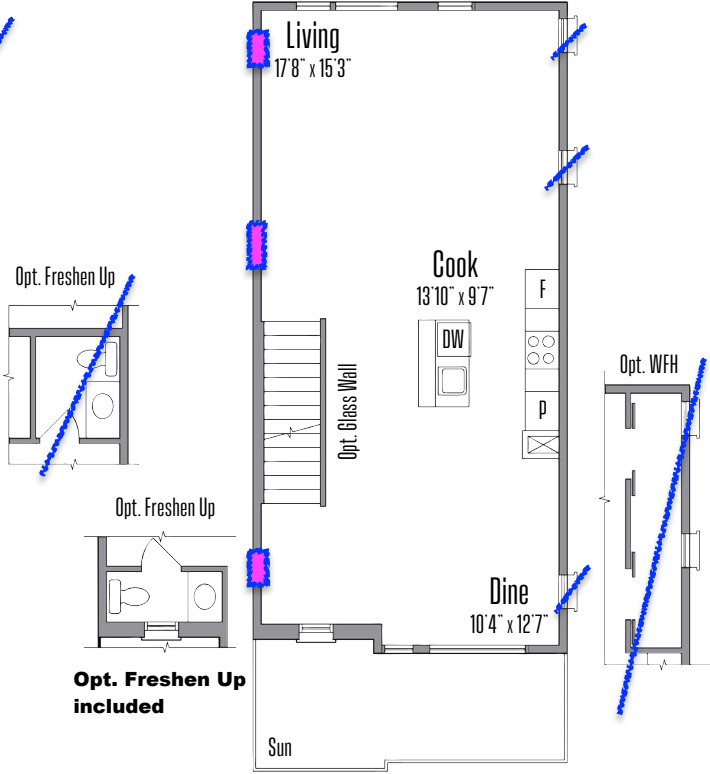
~~Homes #22 & #24 will be constructed without end unit condition main and third floor windows, as per O.D.C. E&OE.~~

#2 Active as built Sept 2024

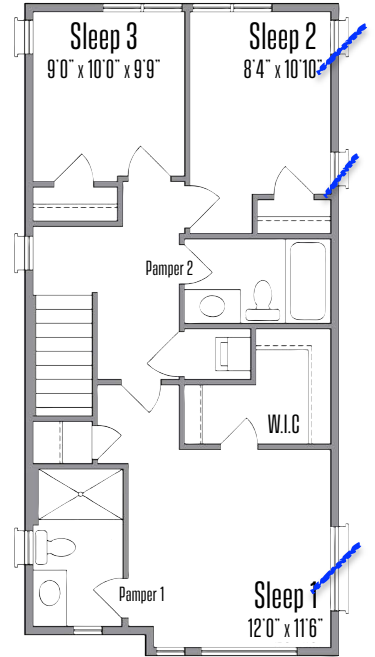
GROUND FLOOR



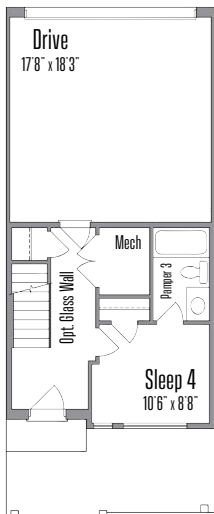
MAIN FLOOR



THIRD FLOOR



ALT. GROUND FLOOR



Alt. Ground Floor included