



the
AVIATION

C ONDOMINIUMS

Wilde about...

It's a feeling that starts with a subtle hint of something special is coming that puts a skip in your step, a smile on your face and all of a sudden every molecule in your body is jumping for joy!

It's like a lightning bolt that strikes and summons a primal passion, mad love, and manic must-have, need-it-now desire you can't live without... and that's when you know you're feeling Wilde.





Wild
Ideas
about
wildlife



This latest hotspot hood attracts an equally trendy crowd of urbanites looking for a stylish destination to stake their claim. Here in this old meets new world neighbourhood. More than just a place to live - it's a whole happening at this very moment transition of an entirely reinvented area coming into its own. An energetic lifestyle hub with a renewed sense of street style, community vibe, and exciting future-forward direction.

Get ready... you're going to feel it the moment you arrive. A skip in your step, a wide-eyed charge of excitement as "Whoa, cool" pops up on every corner. Welcome to the new and improved, uniquely eclectic, reimagined midtown neighbourhood at Glencairn and Marlee.





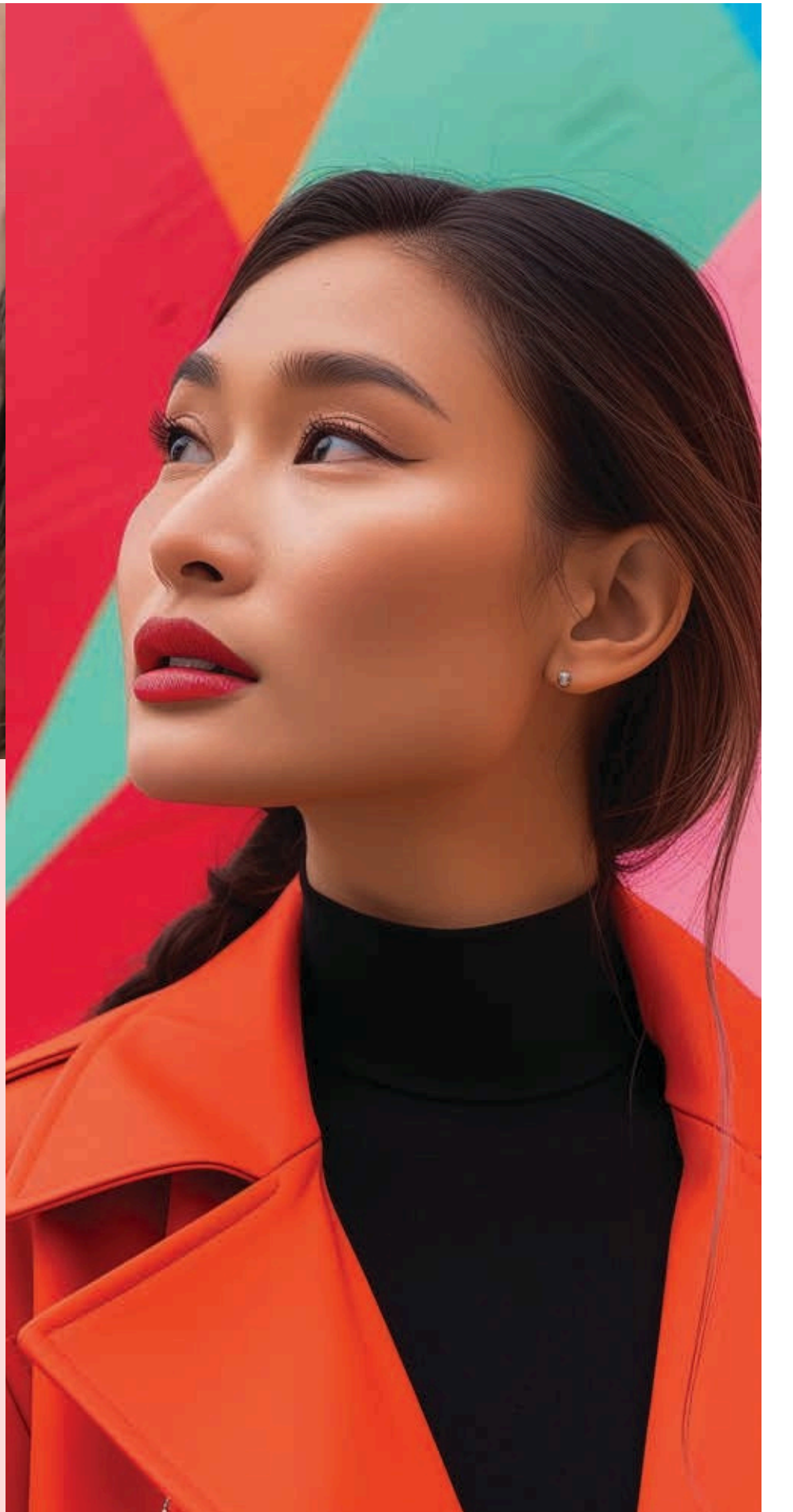
Wilde about modern design

Now is the time to stand up and get noticed as the latest eye candy for the skyline arrives on the scene. The Wilde rises as a modern condo tower stretching 30-stories with a tiered podium packed with amenities.

Choose from a wide range of suites with thoughtfully designed layouts to accommodate different lifestyles and living arrangements. Plus, for an extra treat of convenience, on Marlee Street a stunning courtyard piazza will offer retail shops, restaurants, and cafes.

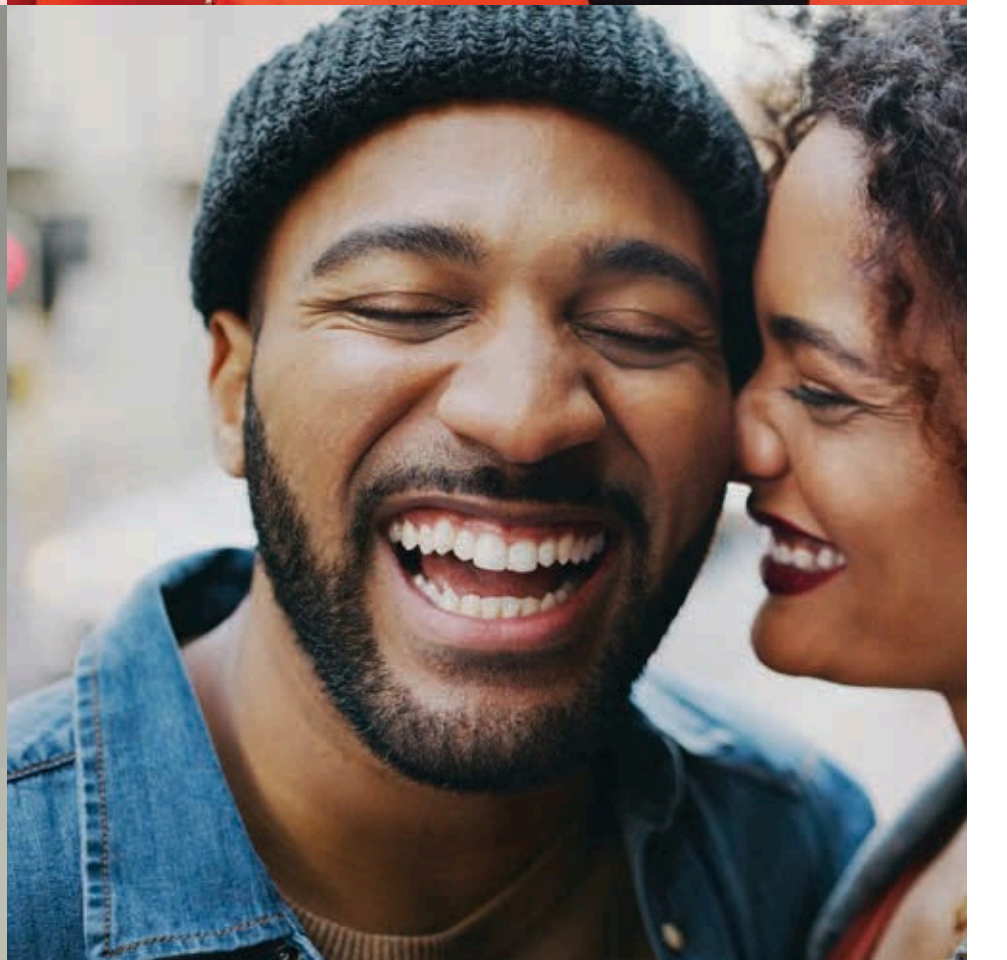
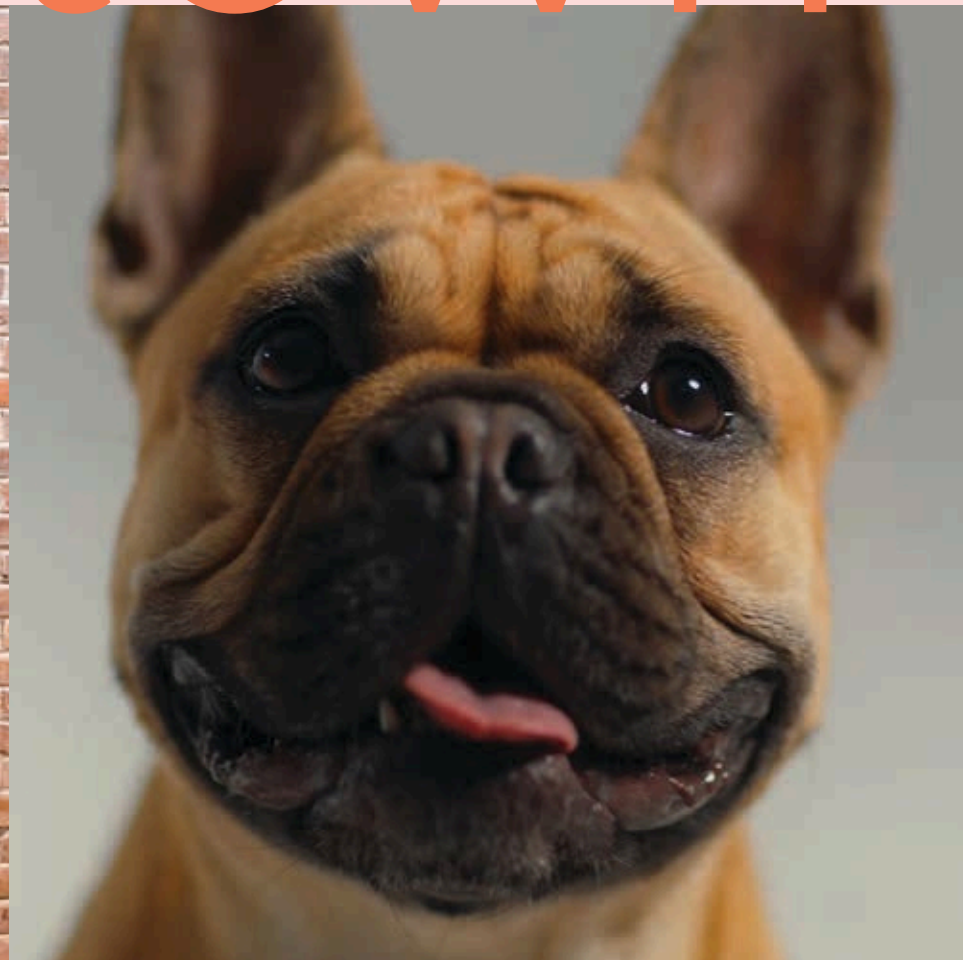
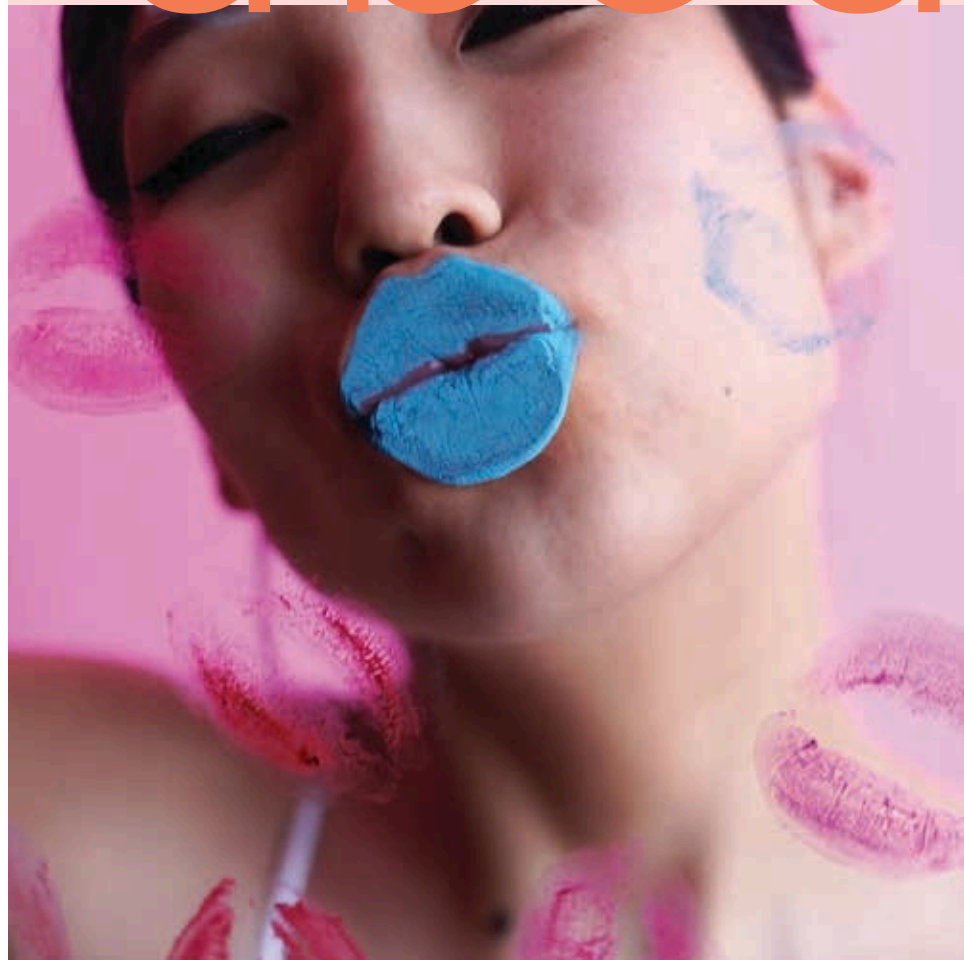


All illustration are artist's concept. E. & O.E.

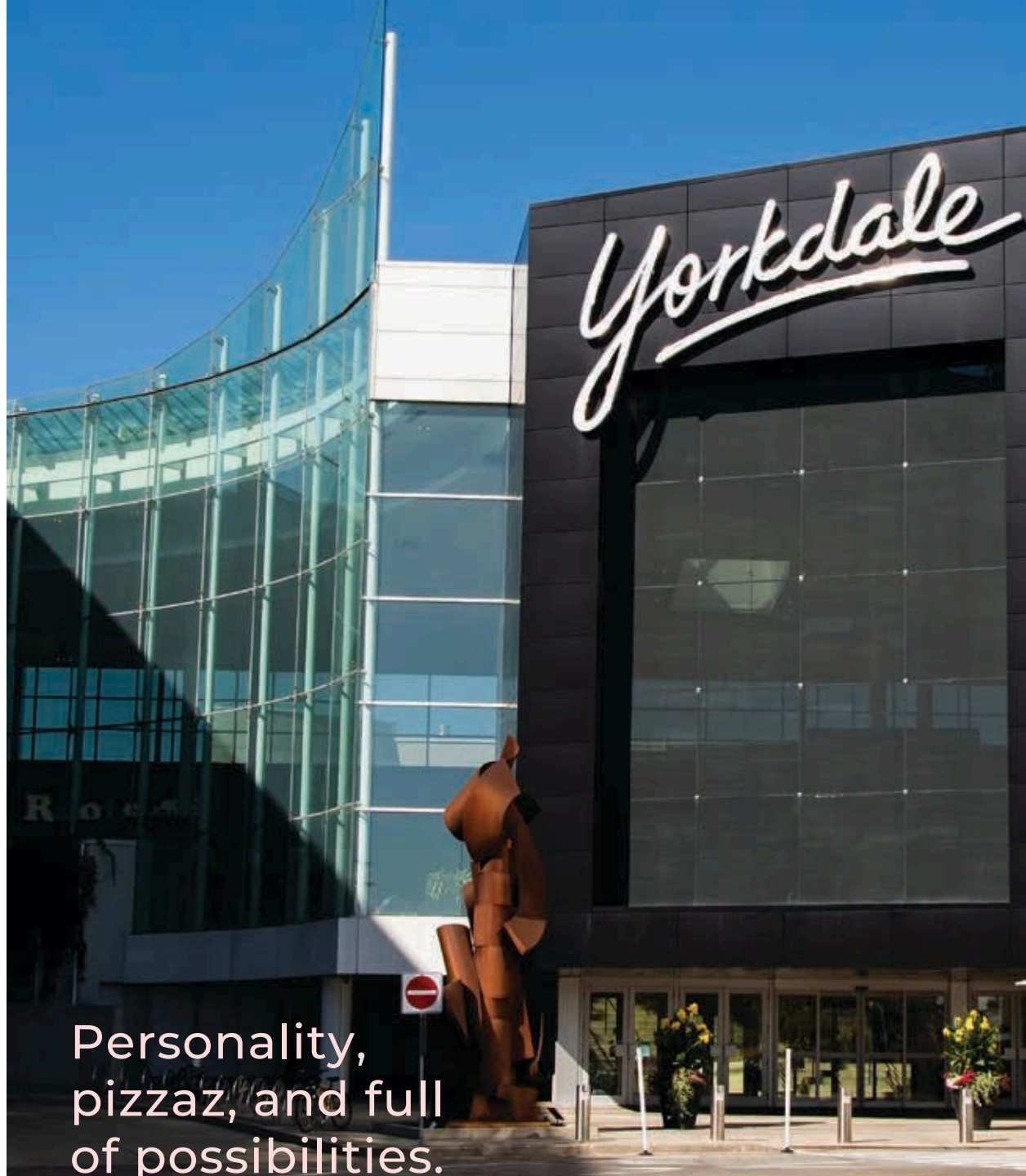


Wildde

about midtown



wildly intriguing food



Personality, pizzaz, and full of possibilities.

Discover a neighbourhood with a lot of local love.



From one-time farmer's fields to family subdivisions, this long-established Toronto stomping ground is constantly evolving, welcoming change and growth while maintaining its tight-knit, diverse community at its core.



Midtown is making its move as it takes a 360° turn to the trendy, reinventing itself into a contemporary, dynamic neighbourhood. Ease of connections kicks things off with all the perks of downtown living, tucked in a hidden gem of an enclave just steps from the Glencairn subway to get you wherever you want.

There are numerous parks to play in and trails to trek, along with vibrant streetscapes coming alive with kitschy charm meets cutting-edge condos and an eclectic assortment of local gems, hipster hangouts, boutique shops and restaurants.



Connection doesn't get better than this



Quick, convenient, very walkable, close to everyday essentials, and easy access to the city at large. Now that's Wilde!

You'll love living less than a 2-minute walk from the Glencairn subway station connected to the Yonge-University line 1 that loops around the entire city. From here, travel 5 stops to the Bloor-Danforth line, getting you east and west in a blink.



And coming this year, just a 6-minute walk lands you at the new Eglinton LRT, adding 25 new stations, making it 60% quicker to travel across the city and beyond. Driving downtown or out of town, you're only 4 minutes from Highway 401 and Allen Expressway for a speedy commute.

minute walk from
Glencairn Subway

minute walk to
Lawrence Allen Centre

stops/7 min drive to
Yorkdale Mall

stops to
George Brown College
Casa Loma Campus

stops to
York University
Keele Campus

stops to
University of Toronto
St. George Campus

stops to
Union Station

minute drive to
Allen Expressway
and the 401

minute walk to
Eglinton Ave shops &
the brand new LRT

minute drive to
Humber River Hospital

minute drive to
Yonge & Eglinton

minute drive to
Yonge & Bloor

minute drive to
Pearson
International Airport

Wilde
about living
midtown.
A podium
terrace.
Next to the
subway.
Stunning
suites.
Beltline trail

parks.
West Eg
village.
Midtown
Living.
Yorkdale
Shopping.
Being
minutes
from
downtown

Nature in the neighbourhood

Escape the daily grind and explore a new path; picnic in the park, play ball, and discover your wild side in a lush and lively green scene right in your neighbourhood.



Trek the York Beltline Trail

Head out and explore the city on this 9km cycling and walking rail trail that is made up of three sections – The York Beltline Trail west of Allen Road, the Kay Gardner Beltline Park from the Allen to Mount Pleasant, and the Ravine Beltline Trail. The trail is a mix of terrain with parks, woods, and ravines along the way. The city is planning an extension and new trailhead of the York Beltline Trail between Marlee Ave. and Allen Road.



Play ball at Wenderly Park

Gather your team and bring the kids and your four-legged friends to a family-friendly park with a huge baseball diamond, playground, and path perfect for dog walking.

Picnic and play at Viewmount Park

With something for everyone, enjoy the natural scenery surrounding a huge football field, baseball diamond, kid's playground, and outdoor tennis courts. There are also places to picnic, two bike trails, and a play area for your pup.



Go big and go to Downsview Park

Famed as Toronto's largest urban destination park, stretching 291 acres – no matter what you're into, you'll find it here! Trailblazers can explore a variety of hikes along diverse landscapes featuring forests, meadows, ponds, gardens, and wildlife habitats. There are unique circuits to walk, run, or cycle, along with multiple sports fields, a kids' Play Zone, rock-climbing, go-carting, and an off-leash dog park. The park also features one of Toronto's most coveted outdoor venue spaces where you can take in concerts, movies, festivals, and merchants' market! There's a Discovery Centre for field trips, community programming as well as one of the largest urban farms in Canada.



Head out on a wilde shopping spree



YORKDALE The mega mall

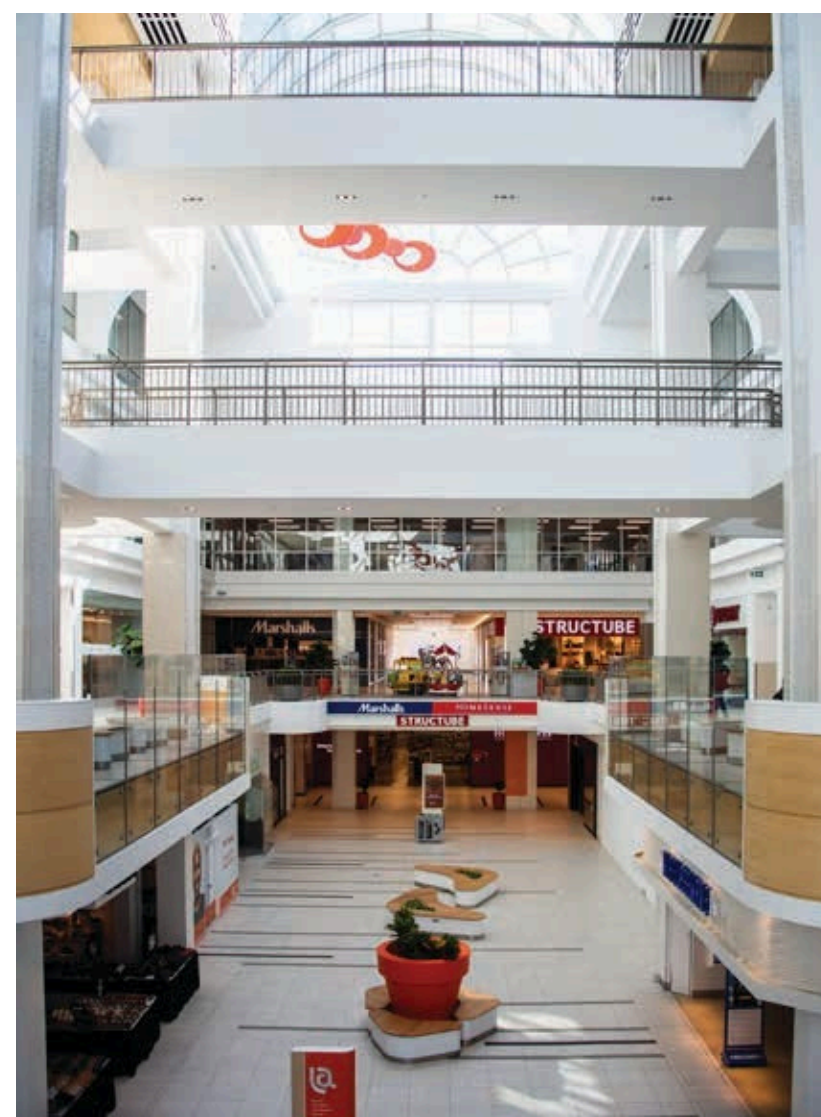
7 MIN DRIVE/2 SUBWAY STOPS

Retailers in Yorkdale including Canada's largest collection of luxury brands

Anchor Stores including Hudson Bay, Holt Renfrew, Nordstrom, Sporting Life, Restoration Hardware and UNIQLO

Eateries

Wilde about style, shopping and discovering the latest trends? Well, you're in luck living within minutes of two of Toronto's largest malls, a handful of handy plazas, super close Smart Centres, and loads of local gems for everyday essentials.



LAWRENCE ALLEN CENTRE Popular fashion & lifestyle shops

3 MIN DRIVE/12 MIN WALK

shops & services including HomeSense, Marshalls, Structube, Canadian Tire, PetsMart and Fortinos



THE DESIGN DISTRICT Design lover's dream

6 MIN DRIVE/13 MIN BUS

The Castlefield Design District is a furniture and interior design haven

LAWRENCE PLAZA Everyday essentials

5 MIN DRIVE/20 MIN BUS

shops & services including TD Canada Trust, Carter's OshKosh, CIBC, LCBO, Metro, Scotiabank, Second Cup, Shoppers Drug Mart, Shoppers Home Health Care, The Shoe Company, and Winners

SHOPS ALONG EGLINTON

Endless Options

13 MIN DRIVE/29 MIN BUS

Yonge Eglinton Mall, Eglinton Square, Yonge Eglinton Centre

SMART CENTRES DOWNSVIEW

Big stores with big deals

8 MIN DRIVE/25 MIN BUS

Best Buy, LCBO, Michaels, Canadian Tire, Home Depot, and Costco

DARE TO DINE

Welcome to an eclectic neighbourhood where culinary choices are as diverse as the community itself!

Nestled within the kaleidoscope of cultures, experience an exciting fusion of flavours from authentic local Ma & Pa spots to international classics, along with hipster restaurants, bars, and kitschy cafes.

MUST HAVE CAFFEINE

Café 513
Tony's Espresso Bar



BREAKFAST, LUNCH, SWEETS & PARTY CATERING

R Bakery Café
Zito's
Amico Bakery



YORKDALE RESTAURANTS

Moxies
Joey
Café Landwer
Earls Kitchen + Bar
RH Courtyard
The Cheesecake Factory
Tora
Yu Seafood

MIX AND MINGLE

Café Landwer
Mezza Notte Trattoria
Chalkers Sports Bar



EXOTIC FLAVOURS

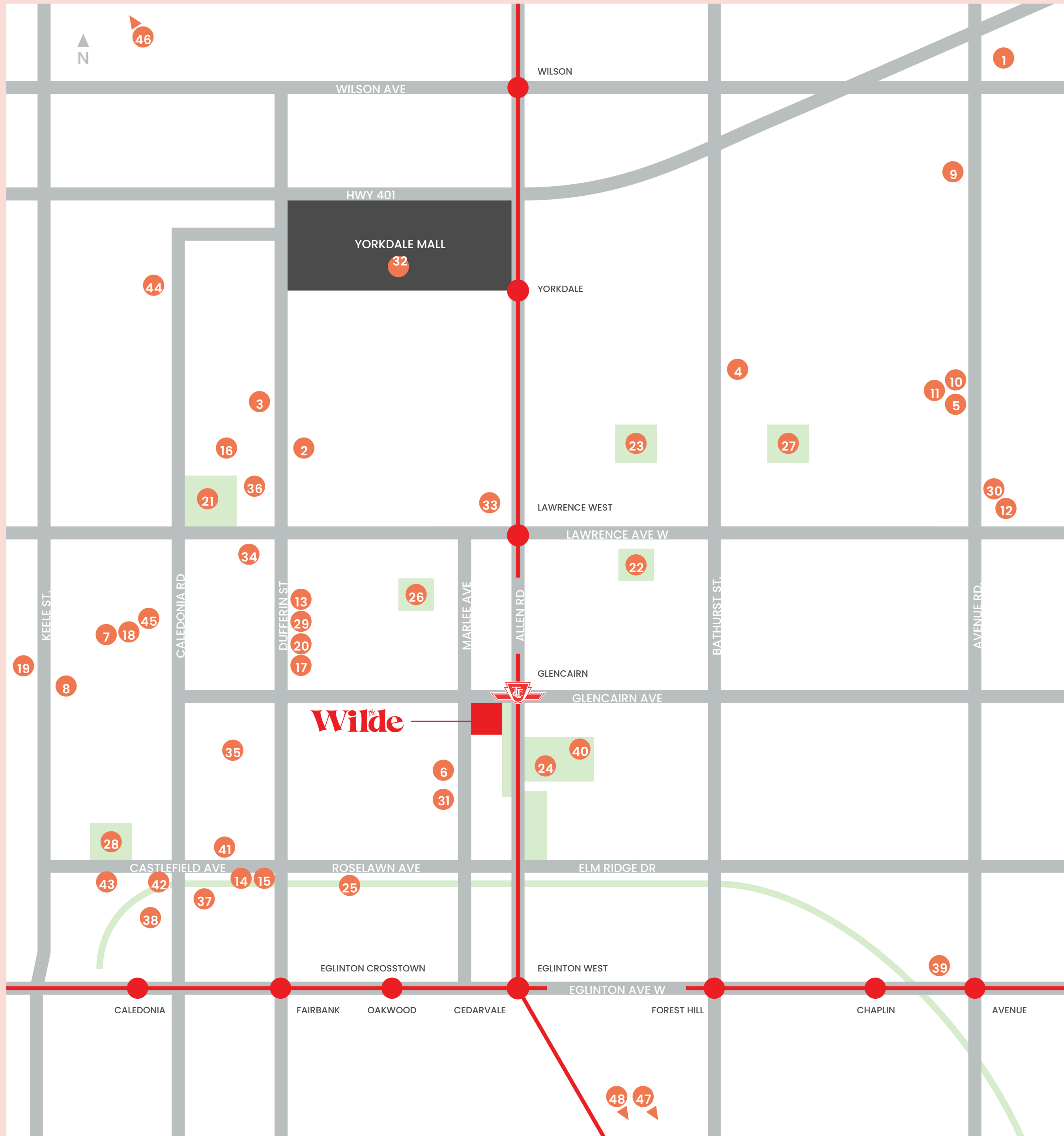
Lechon Republik
Aroma Indian Bistro
Burrito Boss
Pita Pavilion
Miyako Sushi
Miami Wings
Da Rosa Cafe
Mercado
Shahi The Royal Roti
Mezza Notte
Tutto Pronto



ANYTIME PIZZA

Maker Pizza
North of Brooklyn Pizzeria
Pizza Nova
R Bakery Café

ON THE WILDE SIDE



Everything you want & need

Food & Dining Shopping

- | | |
|--------------------------|------------------------------|
| 1. Aroma Espresso Bar | 29. Lady Fork Foods |
| 2. Mezza Notte Trattoria | 30. Pusateri's Fine Foods |
| 3. Demetres | 31. Zito's Marketplace |
| 4. Gryfe's | 32. Yorkdale Shopping Centre |
| 5. La Bamboche | 33. Lawrence Allen Centre |

Lifestyle

- | | |
|--------------------------------|---|
| 6. R Bakery Cafe | 34. Columbus Centre |
| 7. Speducci Mercatto | 35. Casa Di Luce |
| 8. Seara Bakery | 36. Budo Canada –
Boxing Fitness MMA |
| 9. The Copper Chimney | 37. Elte |
| 10. Tutto Pronto | 38. RedLeaf Fitness |
| 11. North of Brooklyn Pizzeria | 39. The Eglinton Grand |
| 12. Maker Pizza Avenue | 40. Viewmount Park
Tennis Club |
| 13. COPS – Doughnuts | 41. La Bicicletta |
| 14. Kitchen Hub | 42. MKT |
| 15. California Sandwhich | 43. Union Lighting
& Furnishings |
| 16. Urla Fine Foods | 44. Home Societe |
| 17. Amico Bakery | 45. Bellwoods Brewery Co. |
| 18. Cucina Mauro | |
| 19. El Tipico Ecuatoriano | |
| 20. Columbus Bakery | |

Parks & Greenspace

21. Caledonia Park
22. Dell Park
23. Prince Charles Park
24. Viewmount Park
25. Walter Saunders
Memorial Park
26. Wenderly Park
27. Woburn Park
28. Woodborough Park

Education

46. York University
47. University Of Toronto
48. OCAD



wilde



and
bout
living





All illustrations are artist's concept. E. & O.E.

Make an
entrance

Sleek style and friendly vibes welcome you home in a modern lobby where comfort meets convenience. Enjoy a 24/7 concierge along with both functional and fashionable space to greet guests, grab a quick meeting or relax while waiting for your uber.



Work it out

Get the job done in a contemporary co-working space designed for productivity and comfort. With high-speed Wi-Fi, meeting nooks, and stylish seating, it's perfect for remote work, collaboration, or a quiet focus session.

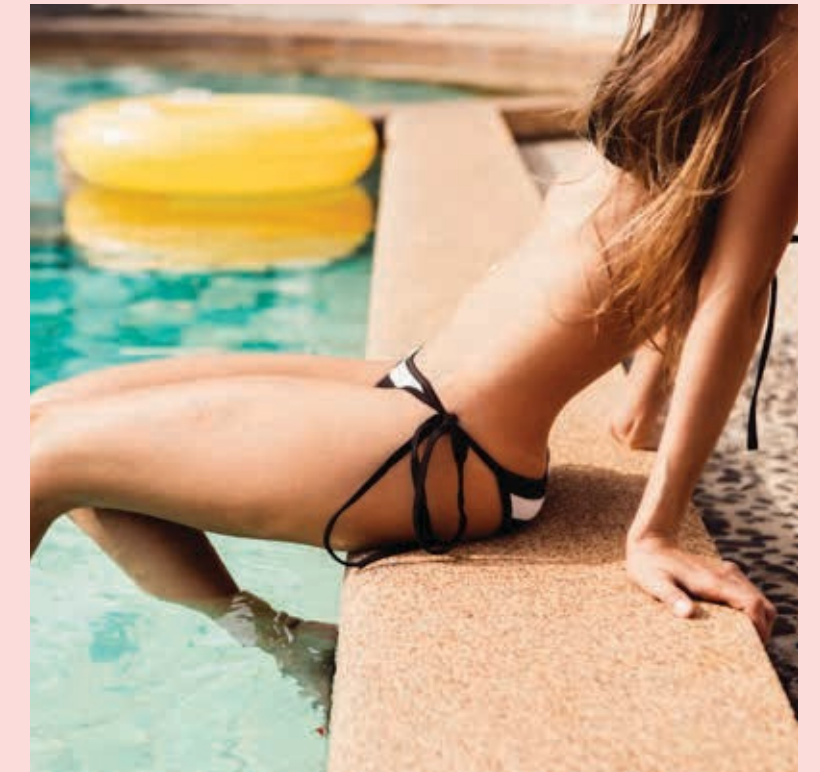
Life's a party



All illustrations are artist's concept. E. & O.E.

Mix, mingle, and make new friends in a stylish social scene that invites good times. Grab a drink at the bar, cozy up on the leather couch or take the party outside onto the outdoor terrace.

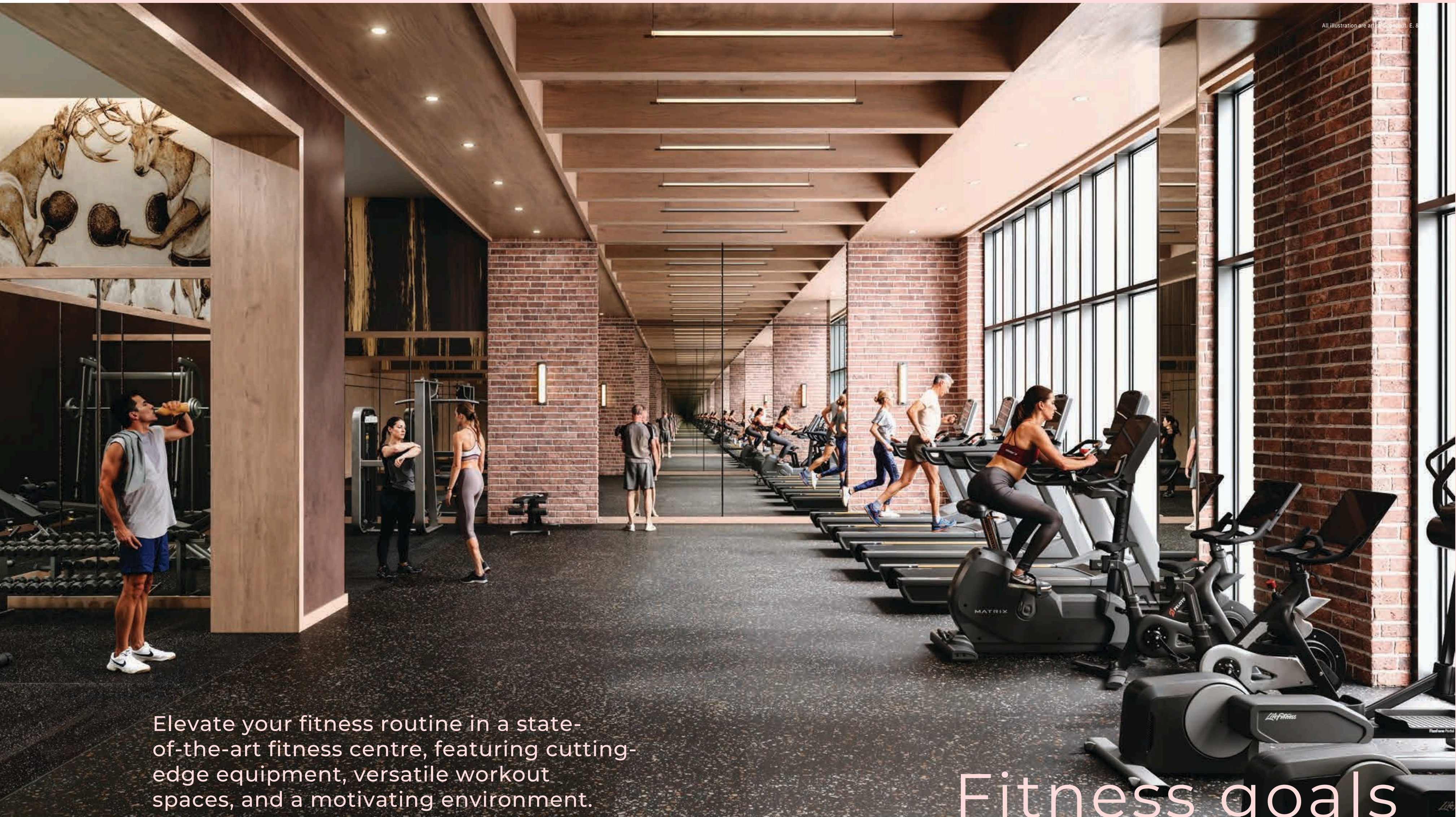
Live the life of luxury on a resort-inspired outdoor terrace and pool. Ideal for sunbathing, socializing, or a refreshing dip, unwinding on comfortable lounges, gather with friends in stylish cabana seating, and take in beautiful views.



Outdoor Pool

A poolside paradise

All illustrations are artist's concept. E. & O.E.



All illustrations are artistic concepts. E. 8

Elevate your fitness routine in a state-of-the-art fitness centre, featuring cutting-edge equipment, versatile workout spaces, and a motivating environment. Whether you're into cardio, strength training, or yoga, you'll find everything you need to achieve your fitness goals.

Fitness goals



Gather the team in a contemporary sports lounge, where you can catch the game on the big screen. For golf enthusiasts, our high-tech simulator lets you practice your swing and play virtual courses, rain or shine.

Cheer on your team

Sports Lounge

All illustrations are artist's concept. E. & O.E.

Playtime is happy time



Kids Lounge



The kids' room is a fun-filled space designed to inspire little minds and imagination. Playfully decorated with colourful decor, cozy seating and toys, it's the perfect place for playdates, creativity, and endless adventures.



5th Floor Amenities Plan

- 1. Party Room Private
- 2. Dining Room Servery
- 3. Outdoor Pool
- 4. Outdoor Lounge
- 5. Podcast Studio Kids
- 6. Playroom Treatment
- 7. Room & Washrooms
- 8. Meditation Room
- 9.
- 10. Co-Work
- 11. Meeting Room

- 1. Lobby
- 2. Lounge/Co-Work
- 3. Parcel
- 4. Pet Spa
- 5. Fitness Centre
Yoga Studio
- 6. Sports Lounge
Golf Simulator
- 7. Outdoor Kids Play Area
- 8. Dog Run
- 9. Piazza

Ground Floor Amenities Plan



Thoughtful design, urban vibes



Living/Dining Room

Come home to a modern open-concept suite where sleek design meets effortless elegance. The space features floor-to-ceiling windows, flooding the area with natural light and offering panoramic views. Contemporary finishes include minimalist cabinetry and a neutral color palette that enhances the feeling of openness. The kitchen boasts state-of-the-art appliances seamlessly integrated into the design, while the living and dining areas flow together, creating a harmonious, airy atmosphere. With an emphasis on functional beauty, experience the perfect blend of contemporary style and practical living.

Chestnut Hill is Wilde about teamwork

Inspired by vision driven by values. 40 Years of
Building Excellence

At Chestnut Hill Developments, we create visionary communities that stand the test of time. Since 1981, our reputation for providing premium locations, brilliant design, and unprecedented value has earned us the trust of thousands of homeowners. Our track record of creating outstanding condominium projects throughout the GTA is largely thanks to our precise understanding of the needs and wants of the community.

As a transit-friendly builder, we know where the market is going and purposefully build in areas poised for growth and exceptional connectivity. Our vision for all communities includes meticulous attention to detail, superior features, exciting amenities, and excellent craftsmanship, using the latest in technology and design advancements. Success after success, count on Chestnut Hill for connected, contemporary living.



**CHESTNUT HILL
DEVELOPMENTS**

BUILDING COMMUNITIES SINCE 1981



Life Condominiums



SF3 Condominiums



Universal City



The Dylan



Lotus



Universal City
Tower 1

Kirkor Architects

Kirkor Architects and Planners is recognized as one of the leading practices in Canada, undertaking large-site, urban intensification projects comprising of complex, mixed use programs. KIRKOR pursues a discipline of architecture that speaks directly to the context of its setting, while offering design solutions that create desirable, multi-faceted, sustainable communities. The firm is leading the field to exciting new possibilities.

Studio TLA

We are Landscape Architects, Urban Designers and Master Planners with a passion for design. We create meaningful spatial experiences that connect people to the places they live, work and play. We connect the systems that impact our everyday well-being: socially, culturally, economically, and sustainably. We believe we have a responsibility to design with innovation, creativity, and technical excellence.

Figure 3

Figure3 is one of Canada's most distinguished interior design firms. Leveraging design-based research and brand strategy, Figure3 helps its clients realize environments which achieve the best connection between people and place. Independently-owned and based in Toronto with an entrepreneurial team of 60+ creative thought leaders in workplace, residential, hospitality and retail, Figure3 has established itself as a trusted partner for 25 years

In2ition Realty

Founded by Debbie Cosic, In2ition Realty is recognized not only as an astute professional, but also as a fearless innovator in the industry. The company is an innovative real estate brokerage that specializes in marketing, merchandising, and selling of new home and condominium communities. In2ition has been able to meticulously understand opportunity while creating industry trends with award winning and profitable results for their clients.

Montana Steele

Montana Steele is a full-service strategic marketing firm that brings over two decades of experience in all sectors of the real estate industry. A strong commitment to creativity and brand-building, deep insights and specialized market knowledge, and long-term strategic thinking capabilities have enabled Montana Steele to launch iconic real estate and destination brands for their varied clientele across North America. At Montana Steele, winning international awards goes hand in hand with winning market share for their clients. Montana Steele offers a comprehensive range of services available in-house and specialized expertise in all areas of real estate and destination marketing.





All illustrations are artist's concept. E. & O.E.

IN2ITION
REALTY BROKERAGE

