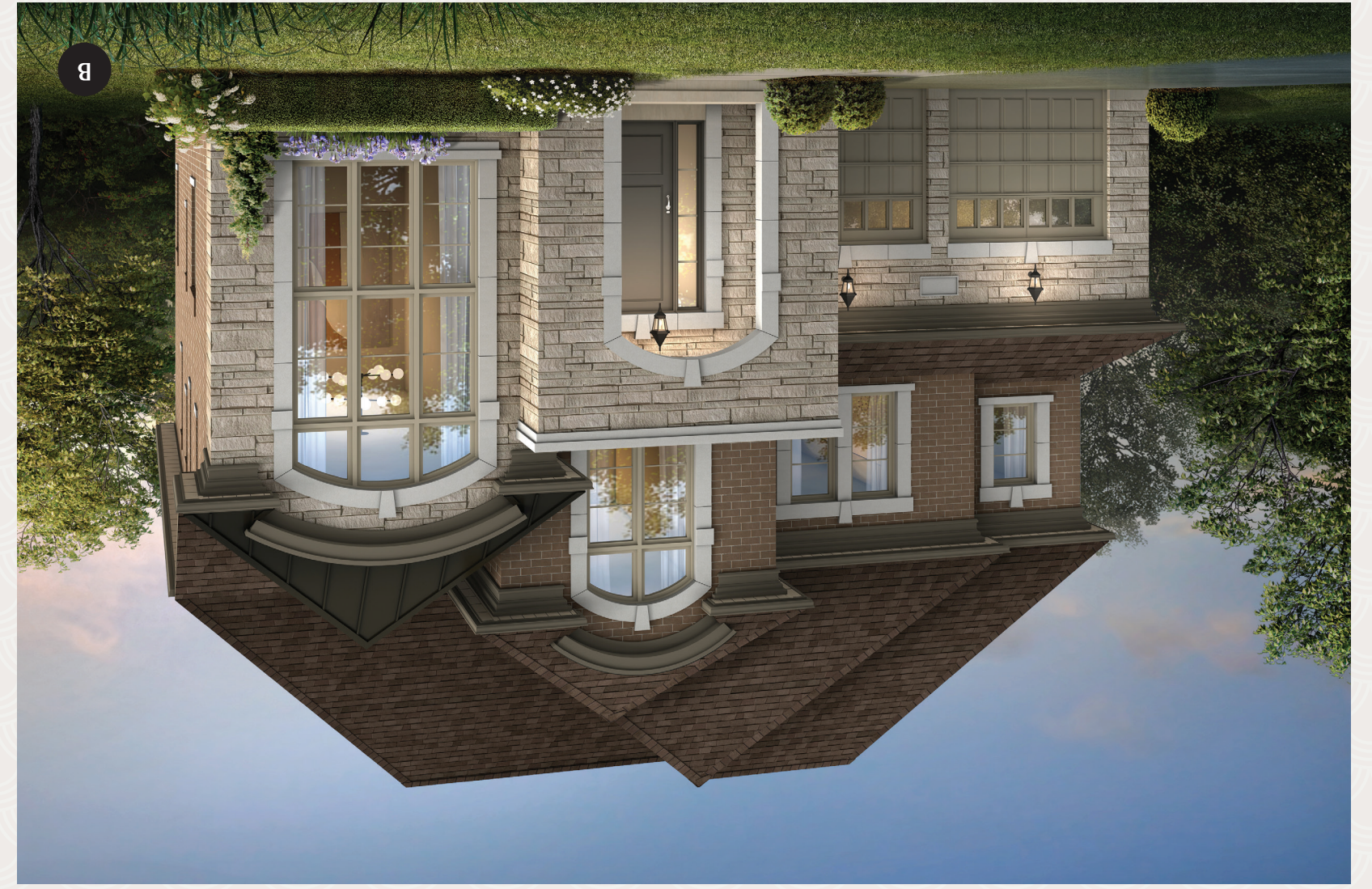
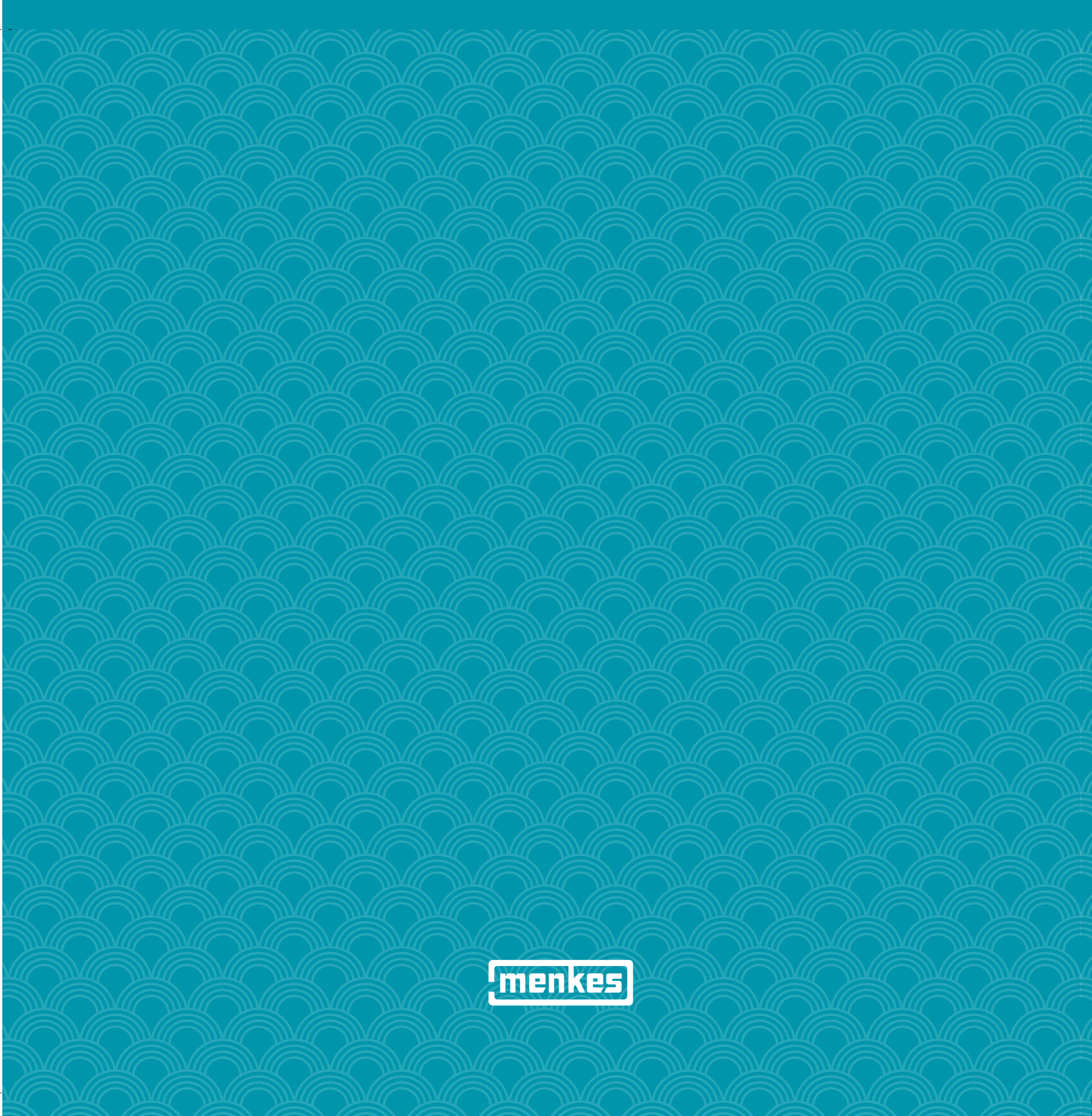


Elev. C 3,412 sq. ft.



Elev. B 3,413 sq. ft.

The Admiral



menkes

THE ADMIRAL | Elev. A 3,414 sq. ft. | Elev. B 3,413 sq. ft. | Elev. C 3,412 sq. ft.

The Admiral

50'

Elev. A 3,414 sq. ft. | Elev. B 3,413 sq. ft. | Elev. C 3,412 sq. ft.
 Alt Main Floor - Elev. A 3,633 sq. ft. | Elev. B 3,632 sq. ft. | Elev. C 3,631 sq. ft.
 (Includes 67 sq. ft. of Finished Basement Landing)

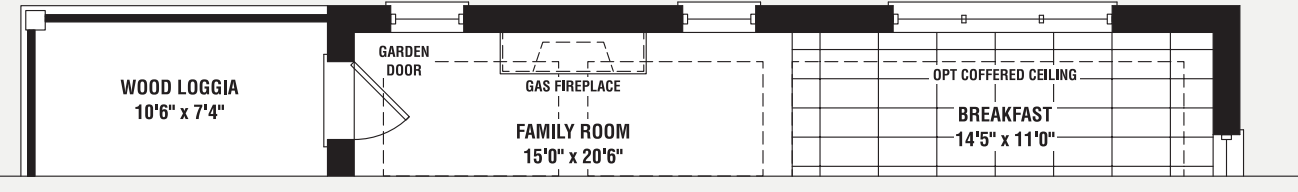



SOUTHLAKE
 RESIDENCES IN OAKVILLE

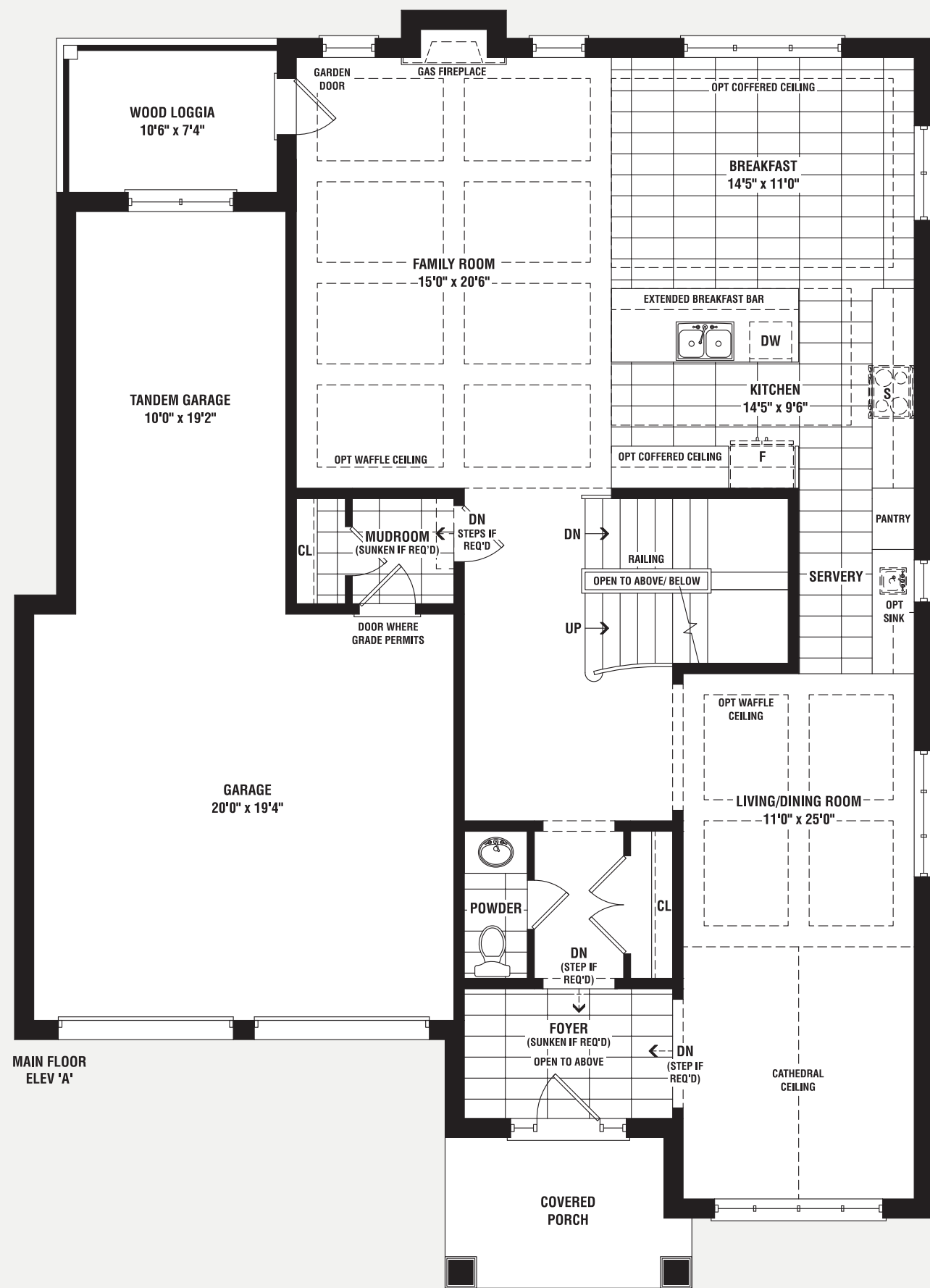


The Admiral

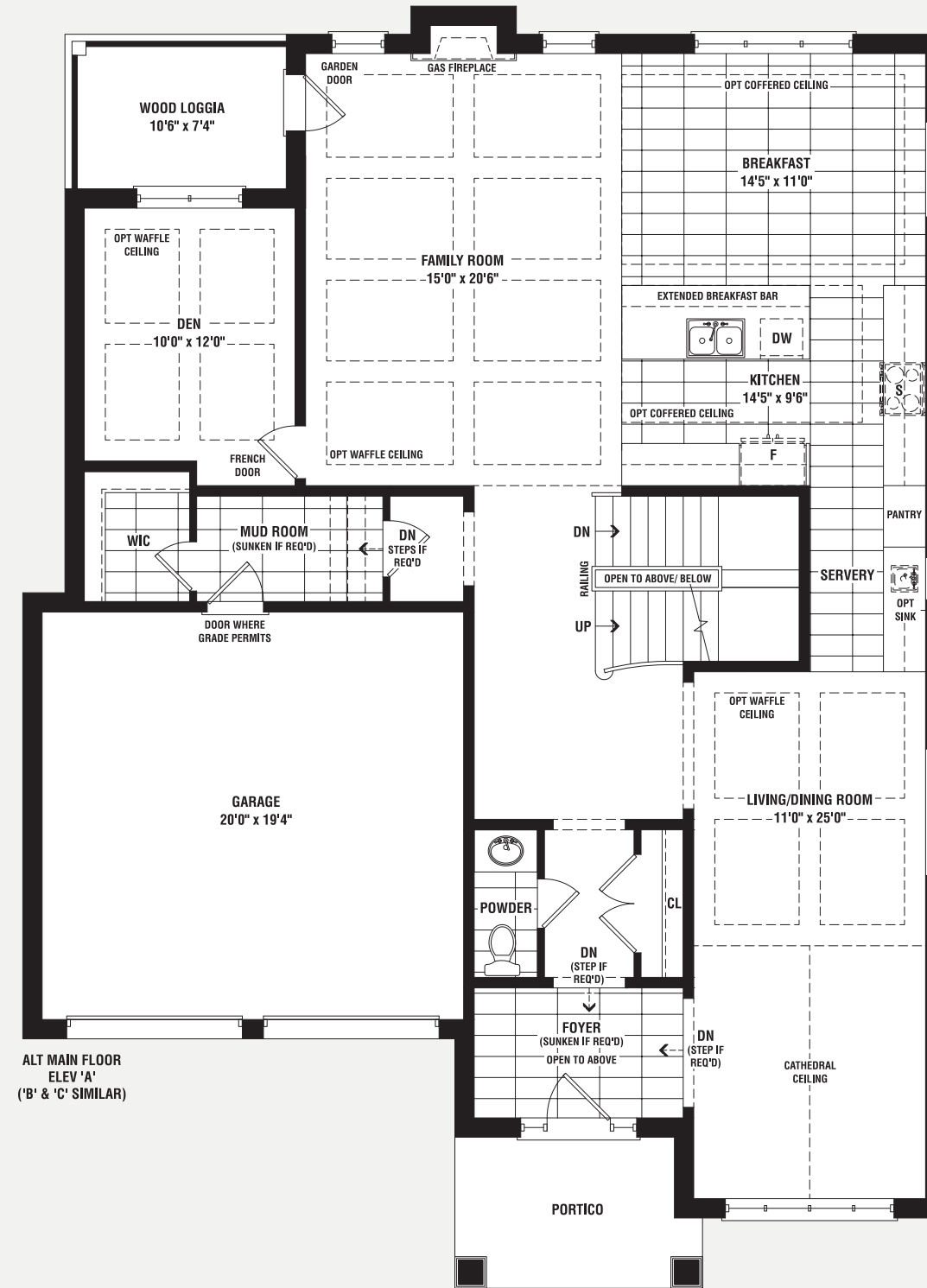
Elev. A 3,414 sq. ft. | Elev. B 3,413 sq. ft. | Elev. C 3,412 sq. ft.
Alt Main Floor - Elev. A 3,633 sq. ft. | Elev. B 3,632 sq. ft. | Elev. C 3,631 sq. ft.
(Includes 67 sq. ft. of Finished Basement Landing)



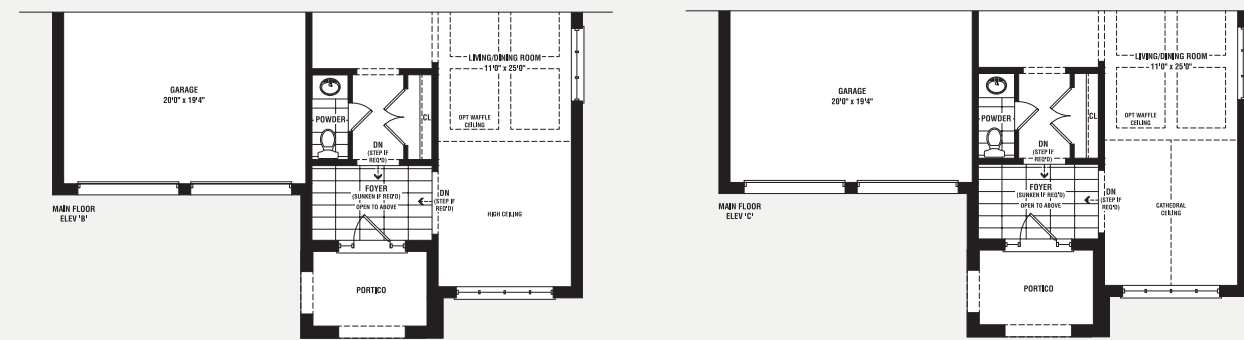
PARTIAL OPT FIREPLACE PLAN
ELEV 'A', 'B' & 'C'



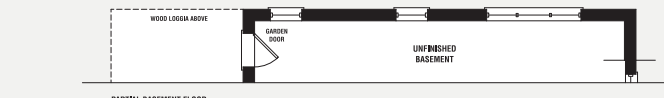
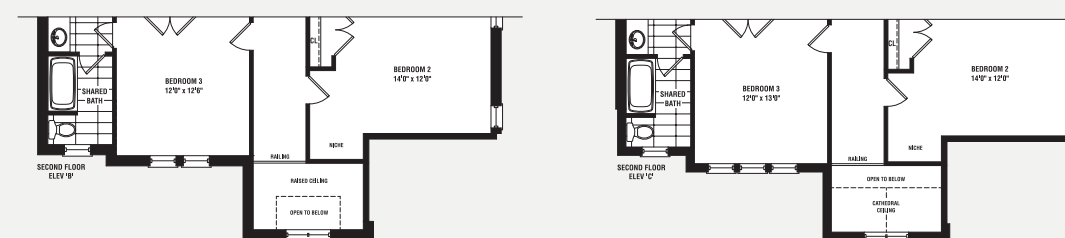
MAIN FLOOR
ELEV 'A'



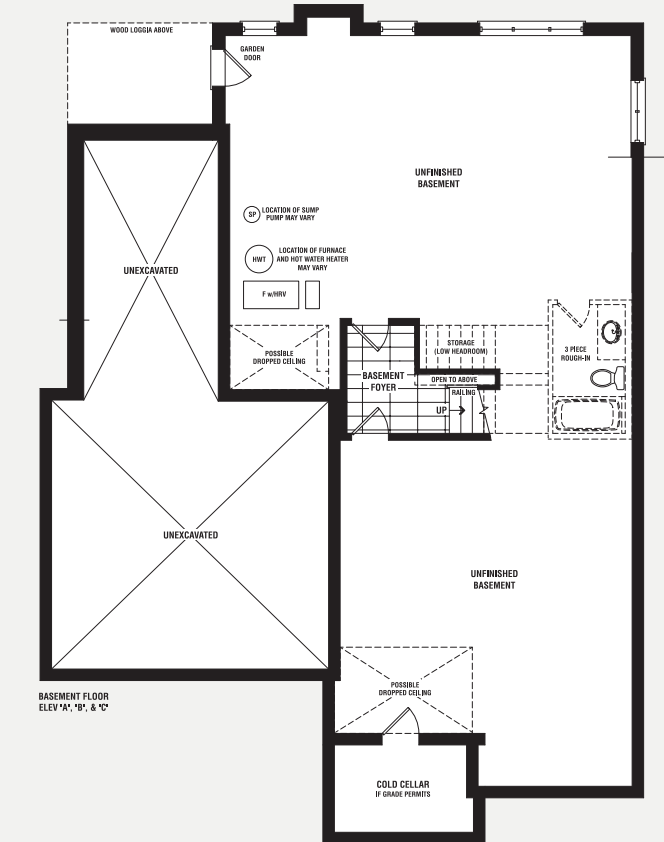
ALT MAIN FLOOR
ELEV 'A'
('B' & 'C' SIMILAR)



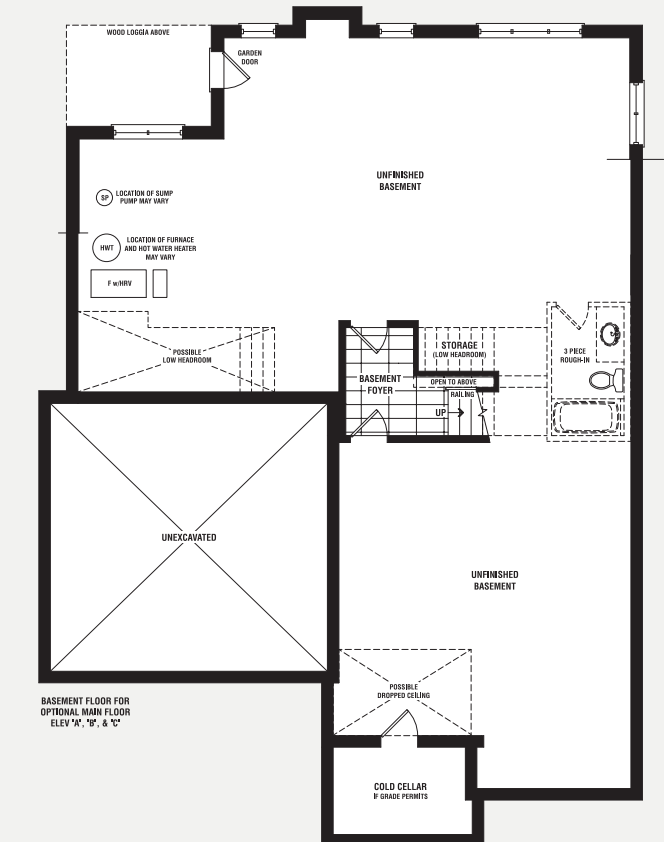
SECOND FLOOR
ELEV 'A'



PARTIAL BASEMENT FLOOR
ELEV 'A', 'B' & 'C'
NO OPT FIREPLACE PLAN



BASEMENT FLOOR
ELEV 'A', 'B' & 'C'



BASEMENT FLOOR FOR
OPTIONAL MAIN FLOOR
ELEV 'A', 'B' & 'C'



The Nautical



Elev. B 3,557 sq. ft.



Elev. C 3,557 sq. ft.

The Nautical

54'

Elev. A 3,576 sq. ft. | Elev. B 3,557 sq. ft. | Elev. C 3,557 sq. ft.
(Includes 216 sq. ft. of Finished Basement Landing)



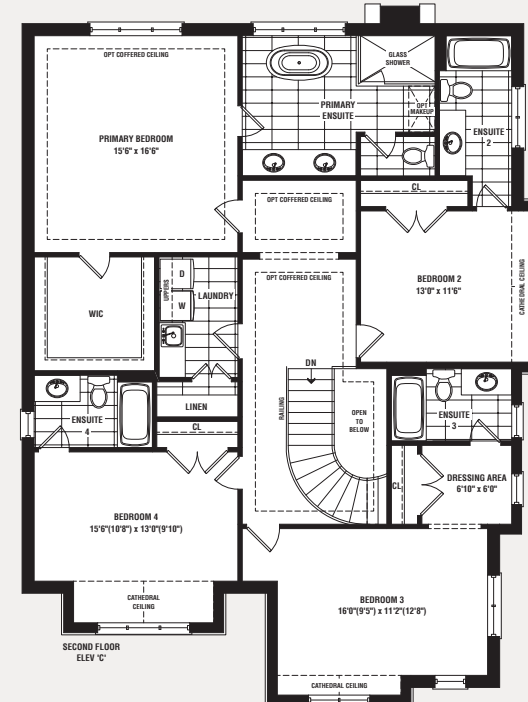
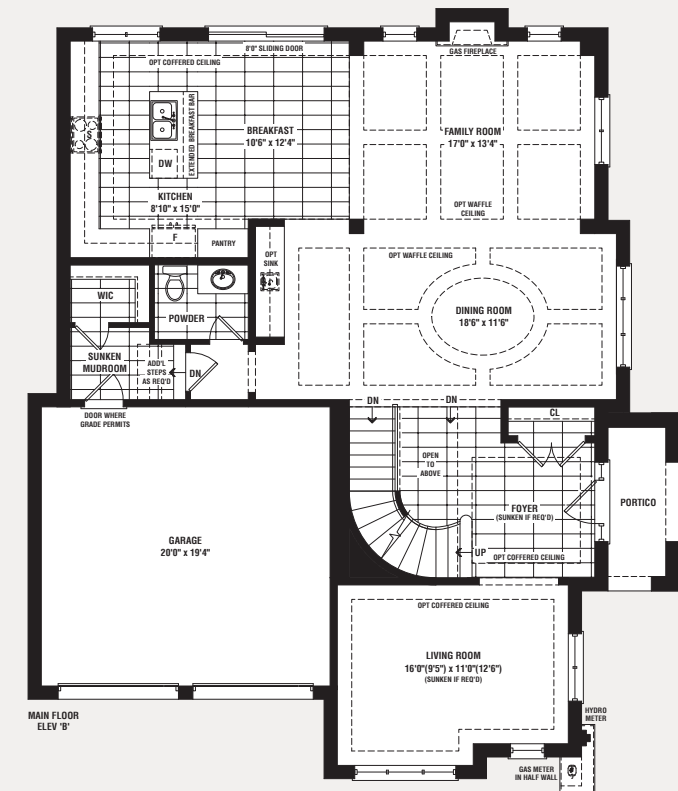
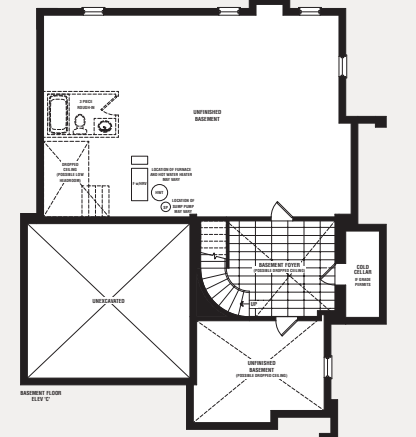
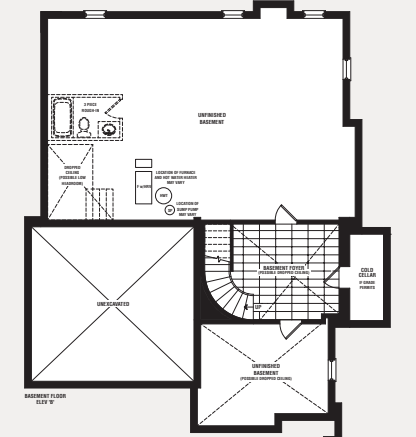
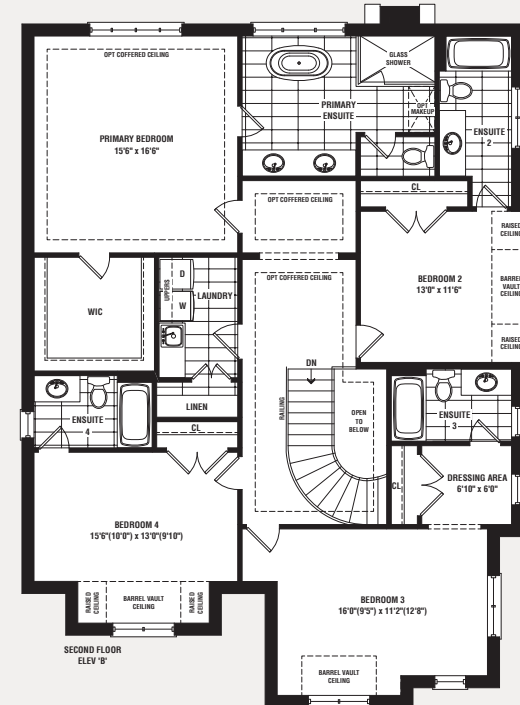
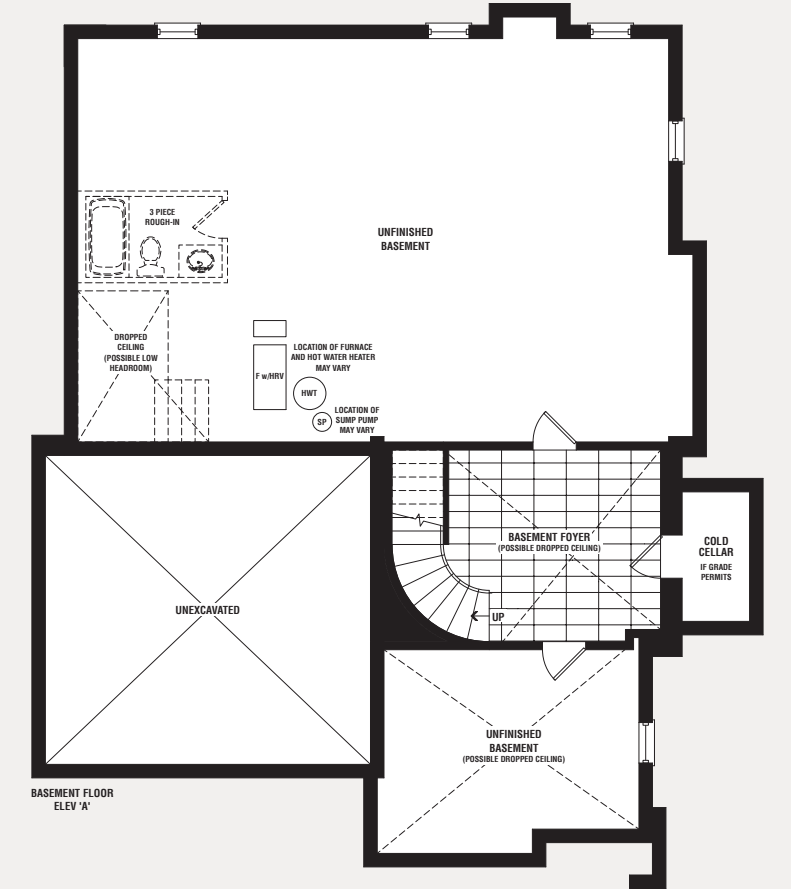
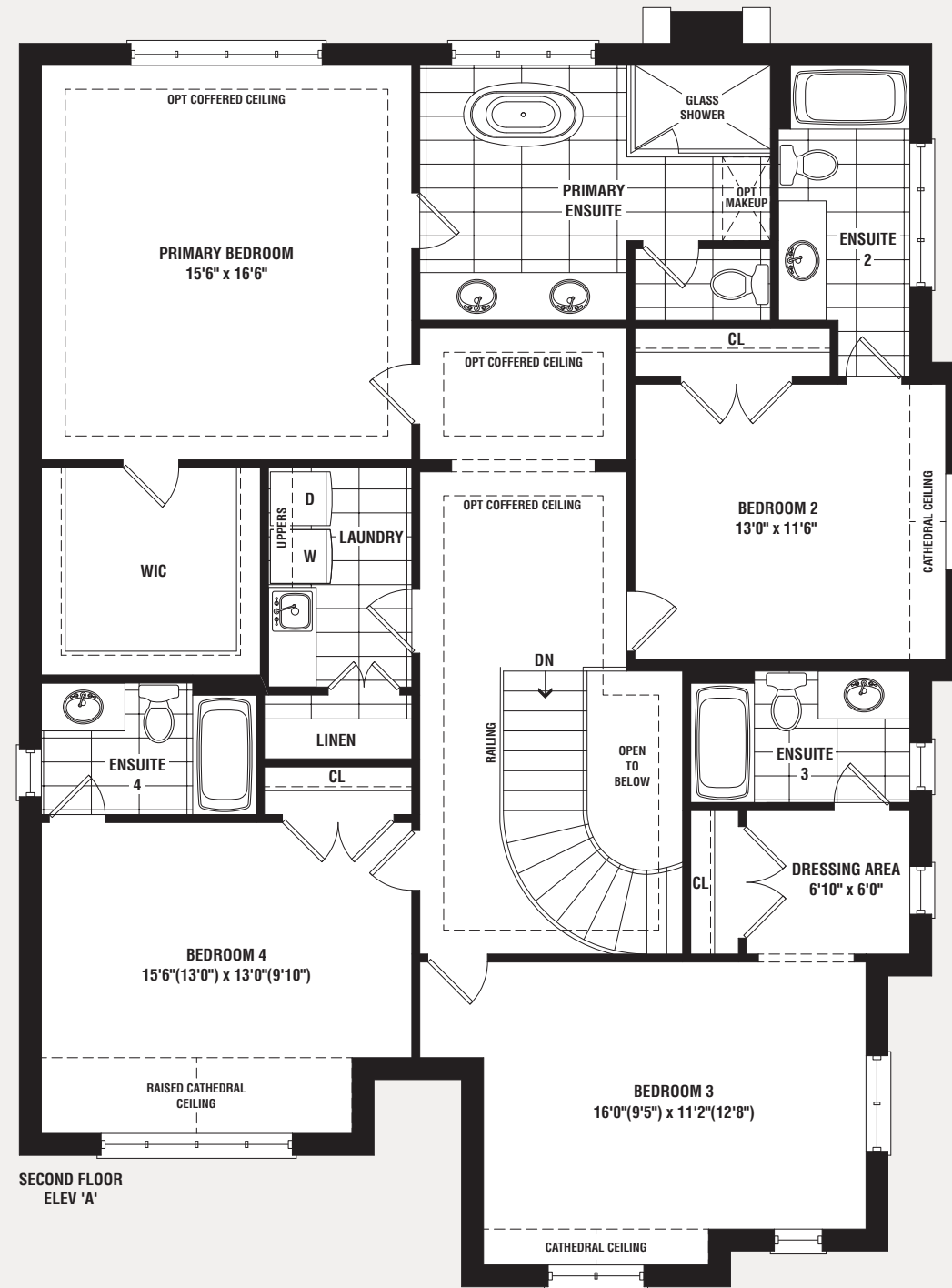
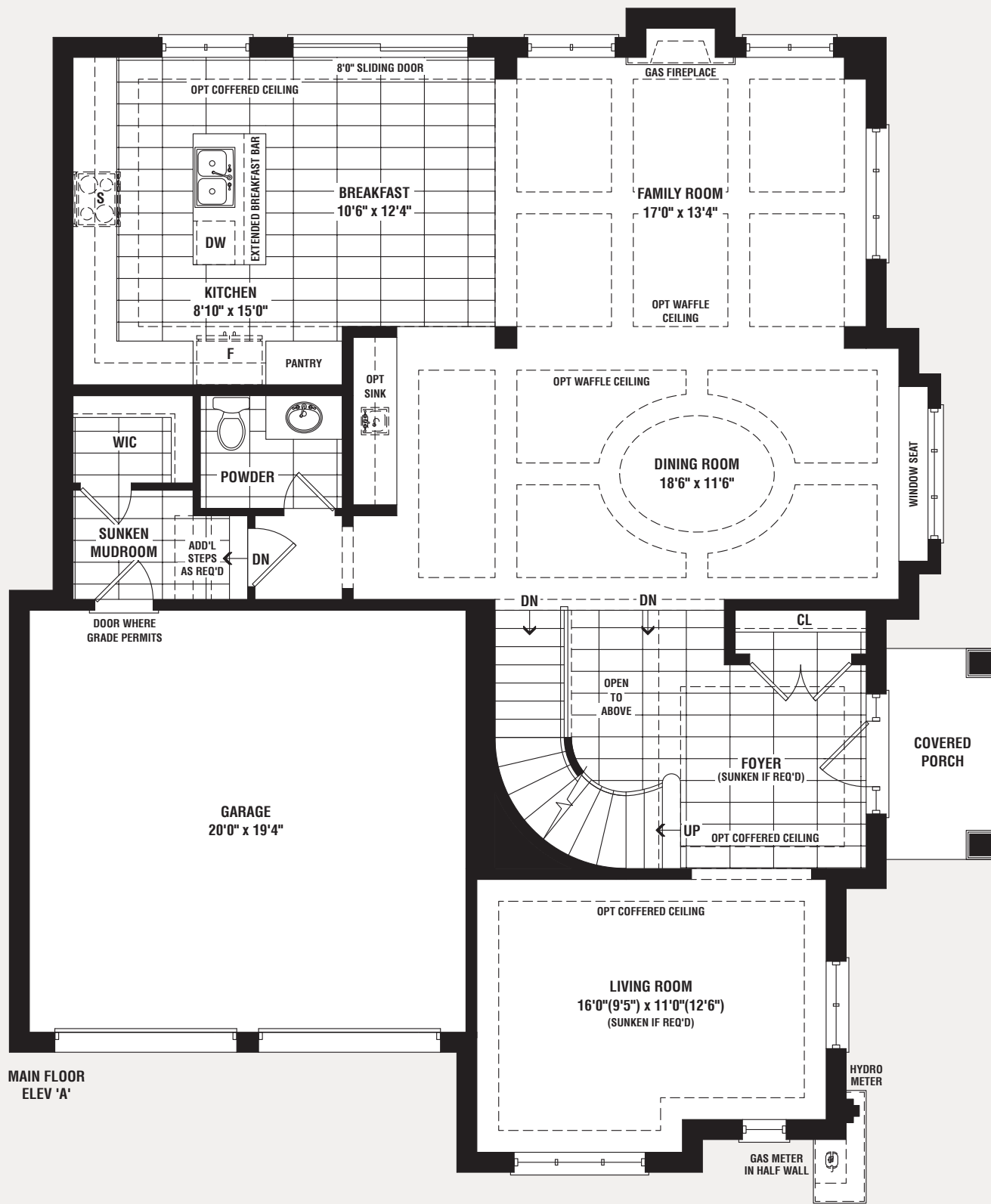
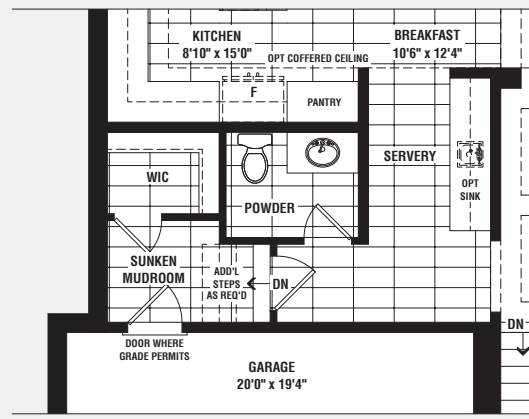
THE NAUTICAL | Elev. A 3,576 sq. ft. | Elev. B 3,557 sq. ft. | Elev. C 3,557 sq. ft.





The Nautical

Elev. A 3,576 sq. ft. | Elev. B 3,557 sq. ft. | Elev. C 3,557 sq. ft.
(Includes 216 sq. ft. of Finished Basement Landing)



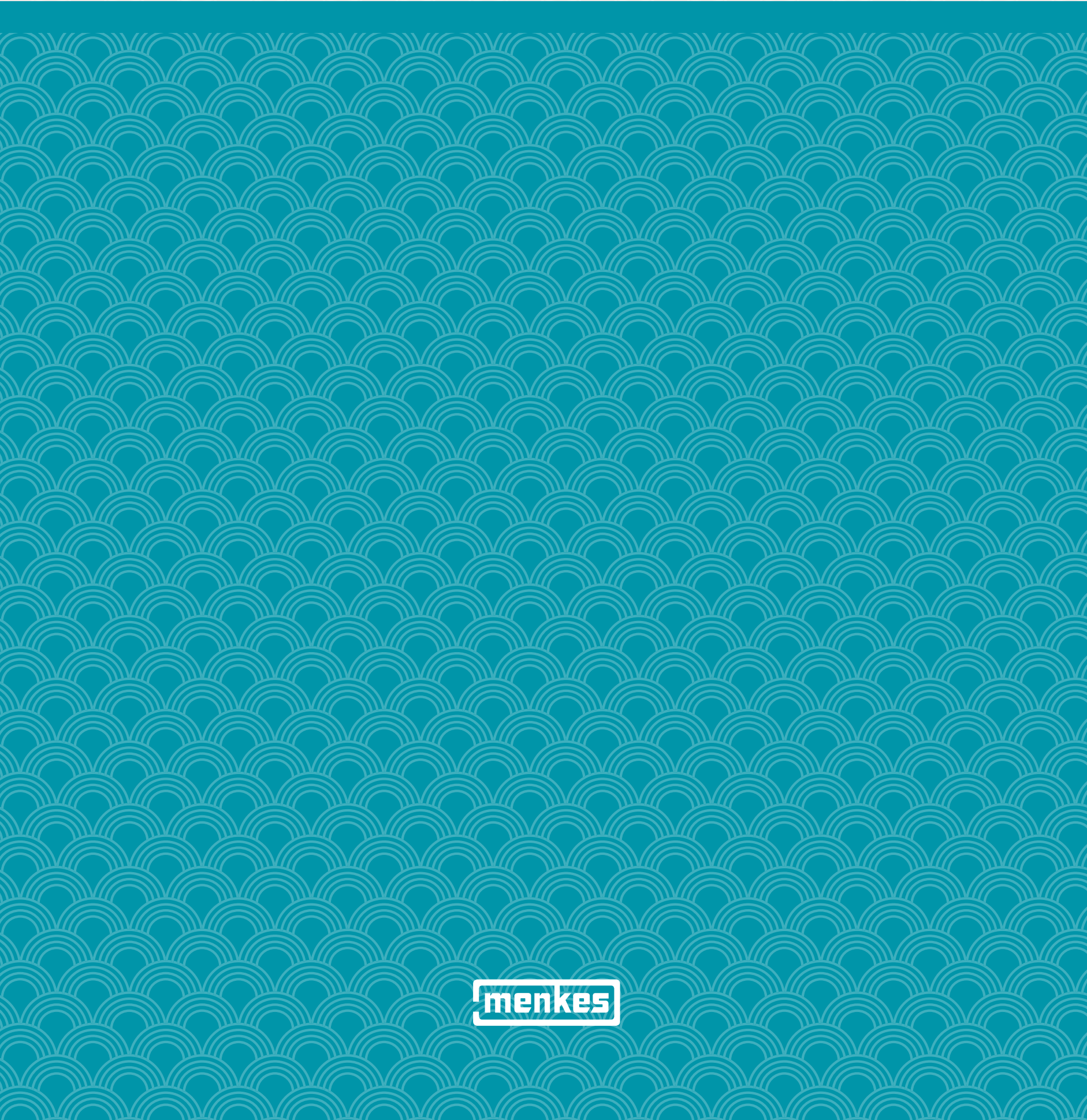
The Lakeside



Elev. B 3,360 sq. ft.



Elev. C 3,352 sq. ft.



THE LAKESIDE | Elev. A 3,356 sq. ft. | Elev. B 3,360 sq. ft. | Elev. C 3,352 sq. ft.

The Lakeside

50'

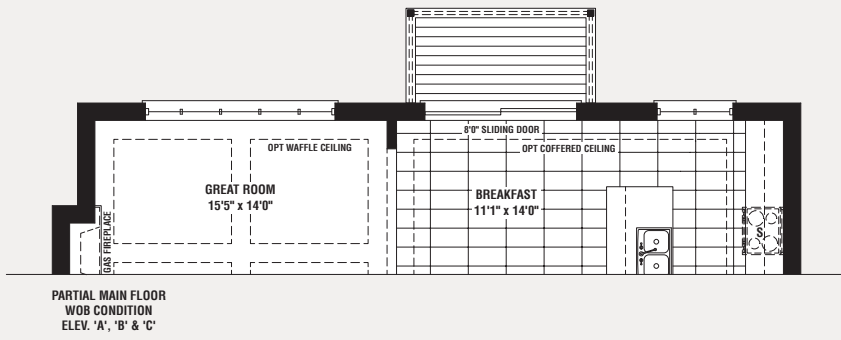
Elev. A 3,356 sq. ft. | Elev. B 3,360 sq. ft. | Elev. C 3,352 sq. ft.
(Includes 52 sq. ft. of Finished Basement Landing)





The Lakeside

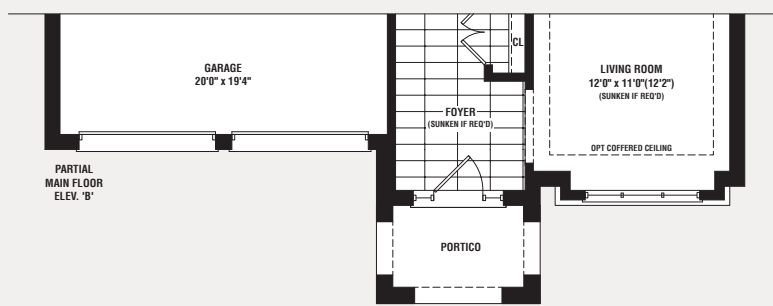
Elev. A 3,356 sq. ft. | Elev. B 3,360 sq. ft. | Elev. C 3,352 sq. ft.
(Includes 52 sq. ft. of Finished Basement Landing)



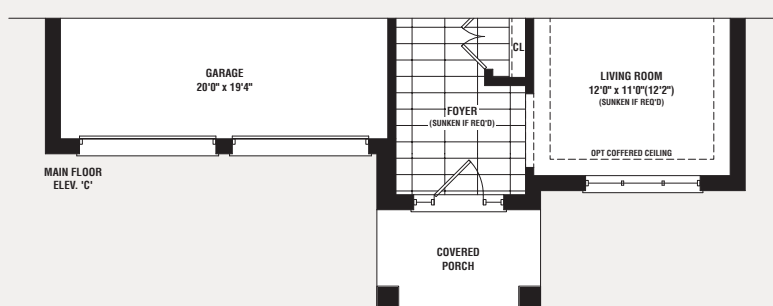
PARTIAL MAIN FLOOR
WOOD CONDITION
ELEV. 'A', 'B' & 'C'



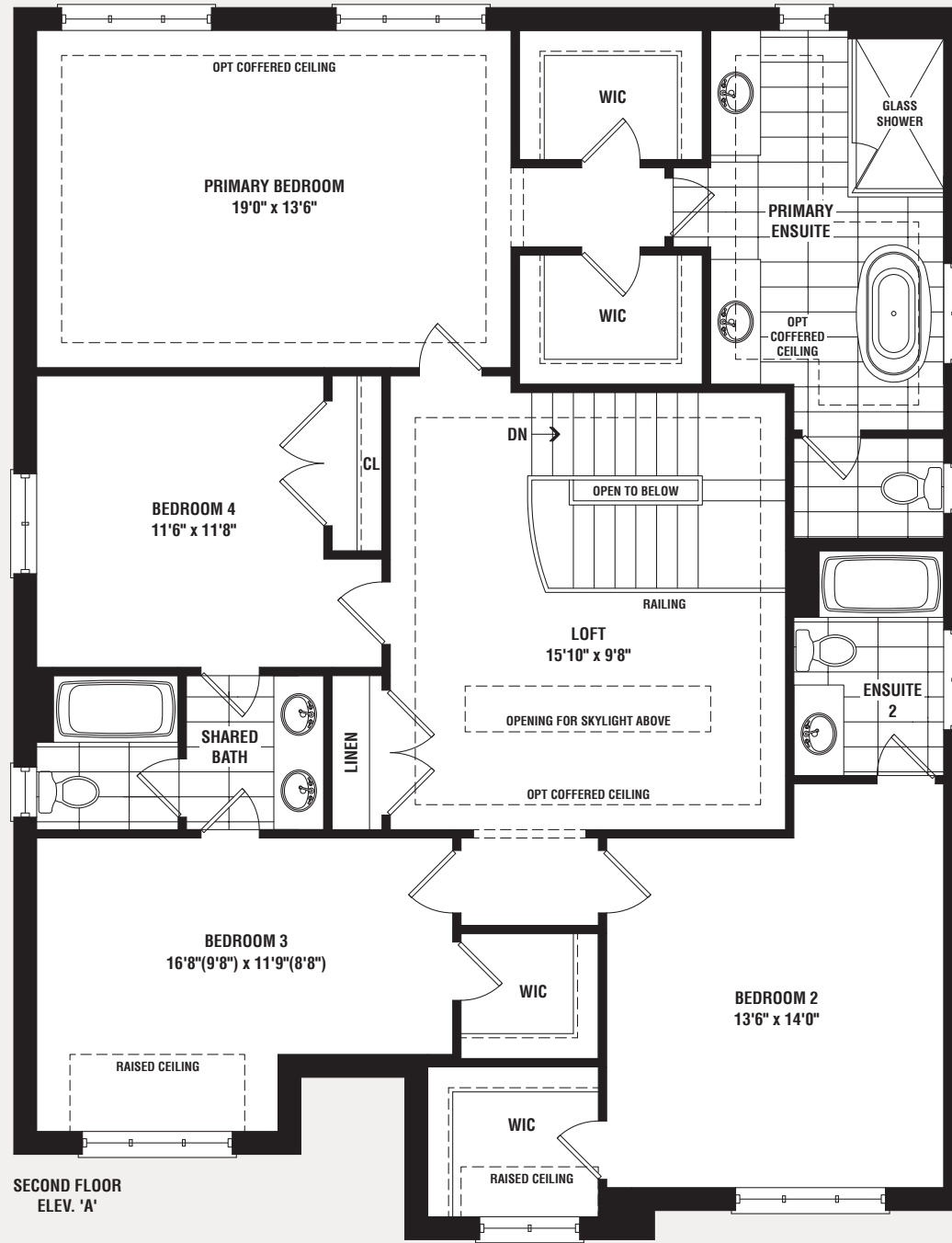
MAIN FLOOR
ELEV. 'A'



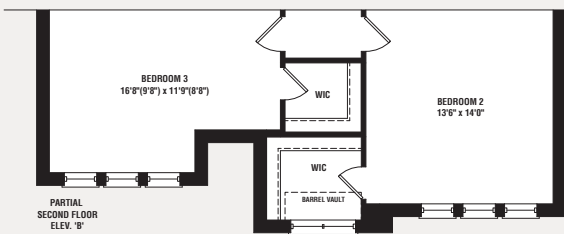
PARTIAL
MAIN FLOOR
ELEV. 'B'



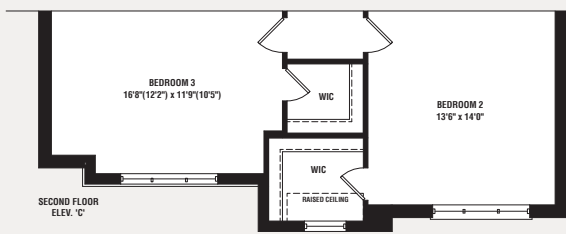
MAIN FLOOR
ELEV. 'C'



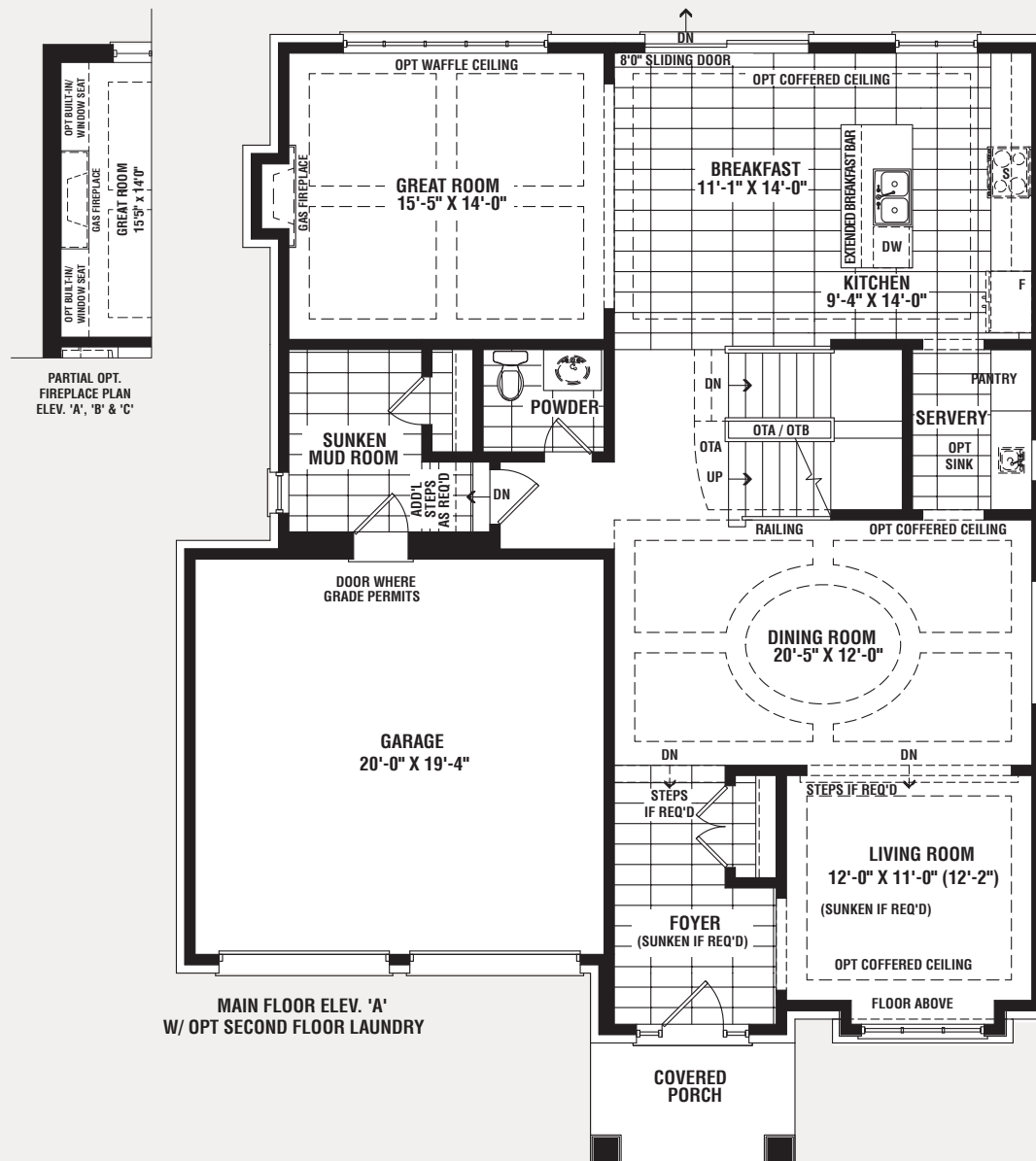
SECOND FLOOR
ELEV. 'A'



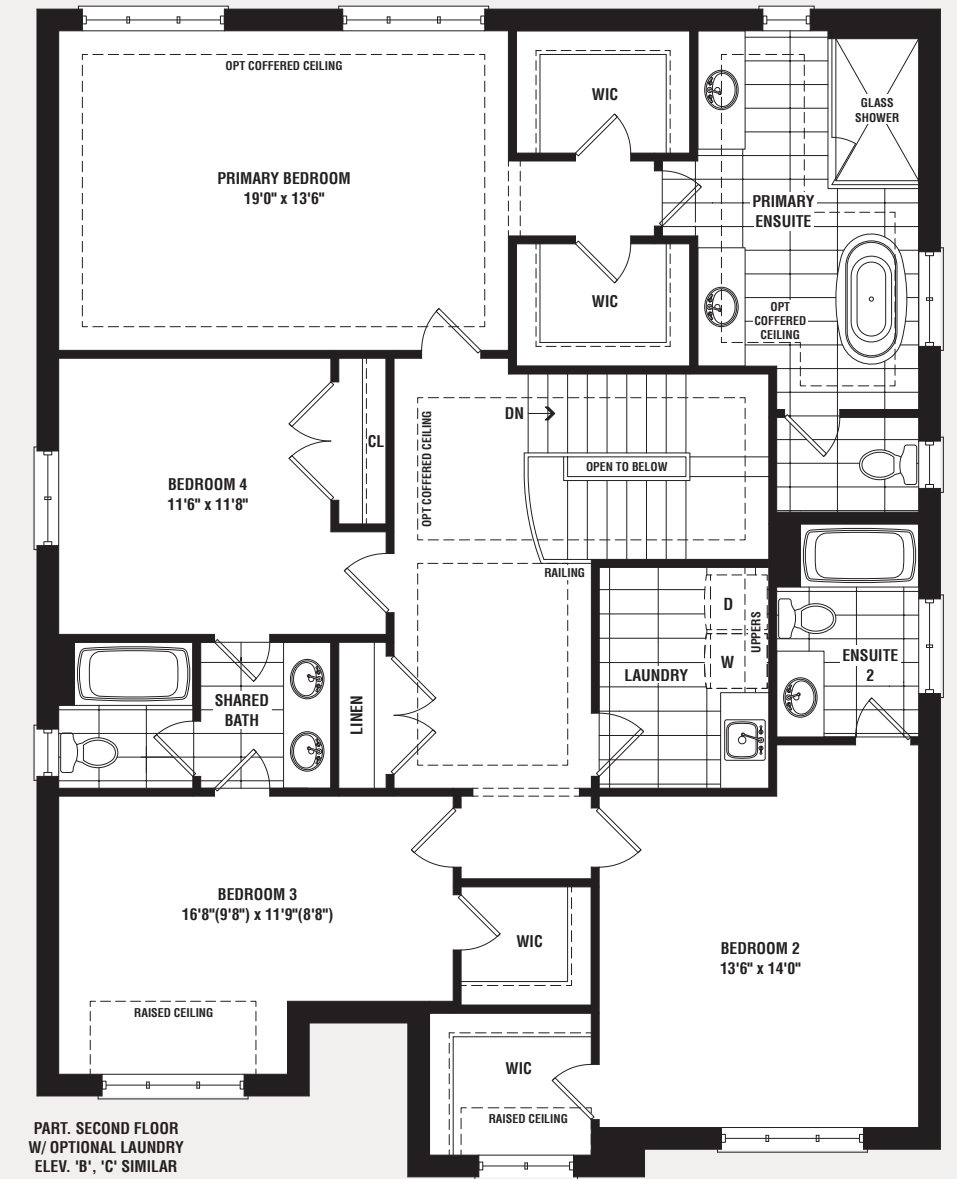
PARTIAL
SECOND FLOOR
ELEV. 'B'



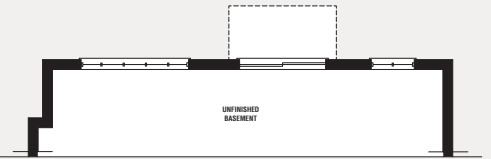
SECOND FLOOR
ELEV. 'C'



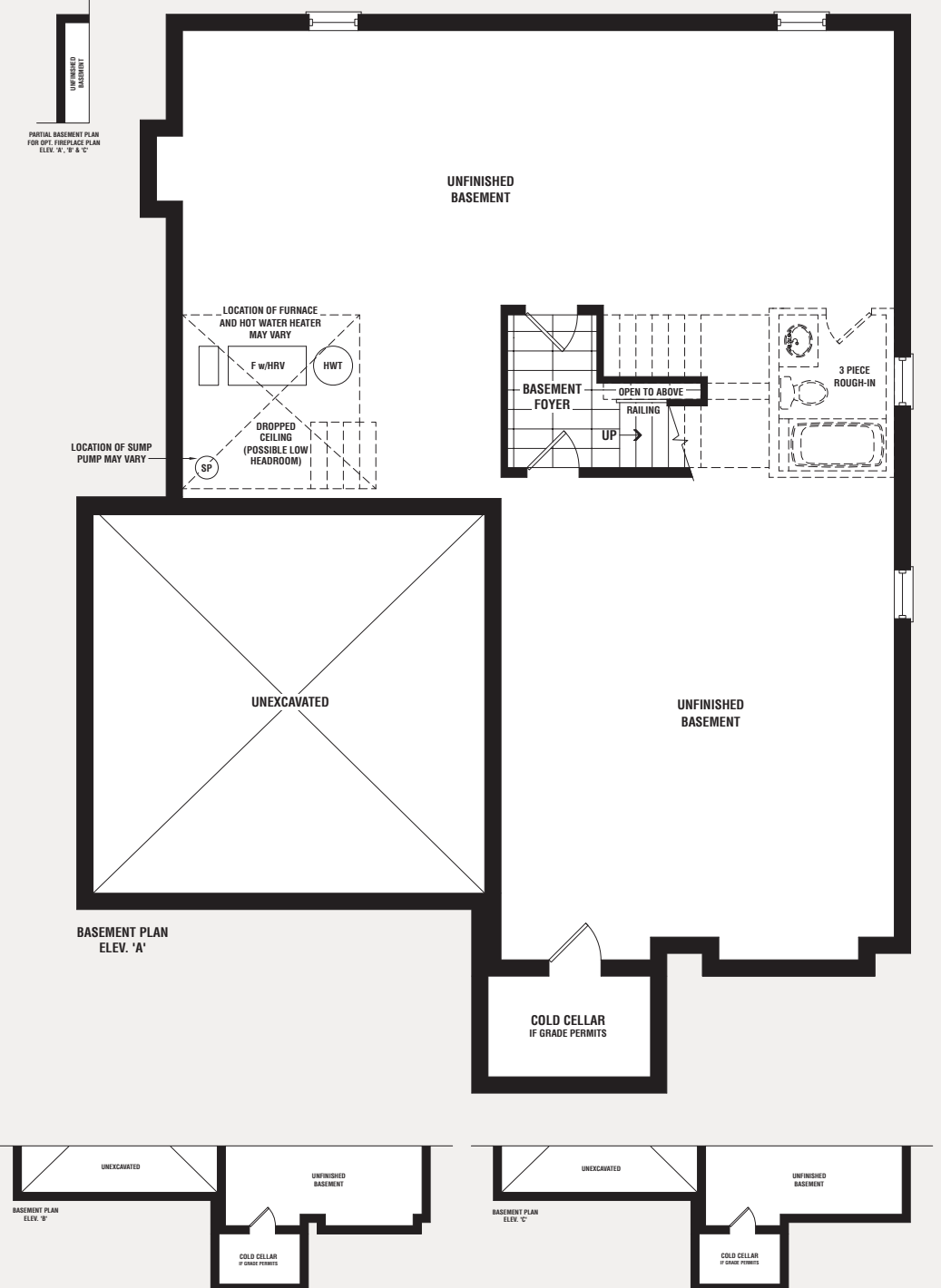
MAIN FLOOR ELEV. 'A'
W/OPT SECOND FLOOR LAUNDRY



PART. SECOND FLOOR
W/OPTIONAL LAUNDRY
ELEV. 'B', 'C' SIMILAR



PARTIAL BASEMENT PLAN
WOOD CONDITION
ELEV. 'A', 'B' & 'C'



BASEMENT PLAN
ELEV. 'A'

BASEMENT PLAN
ELEV. 'B'

BASEMENT PLAN
ELEV. 'C'

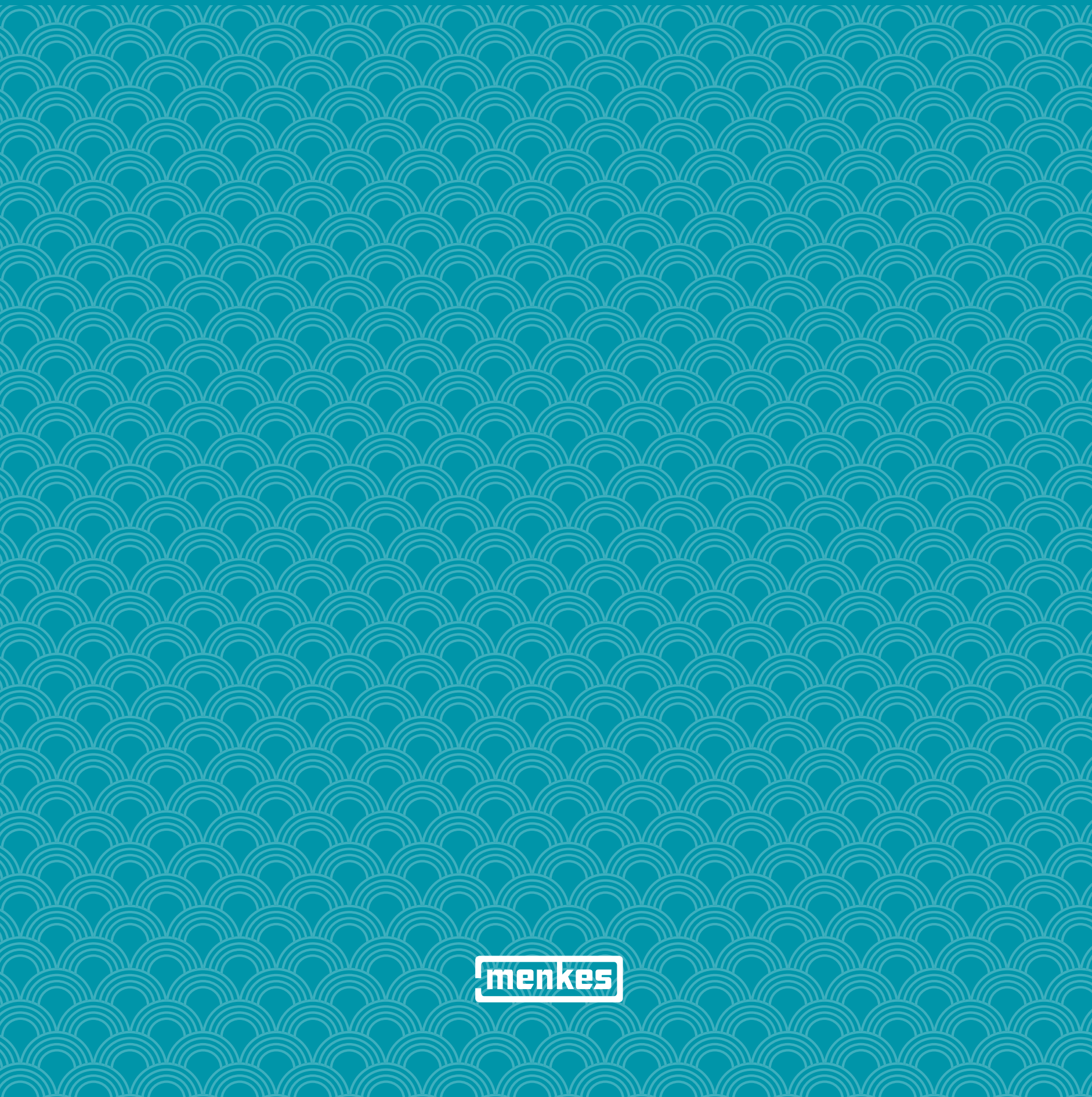
The Harbour



Elev. B 3,202 sq. ft.



Elev. C 3,203 sq. ft.



The Harbour

50'

Elev. A 3,208 sq. ft. | Elev. B 3,202 sq. ft. | Elev. C 3,203 sq. ft.
(Includes 87 sq. ft. of Finished Basement Landing)



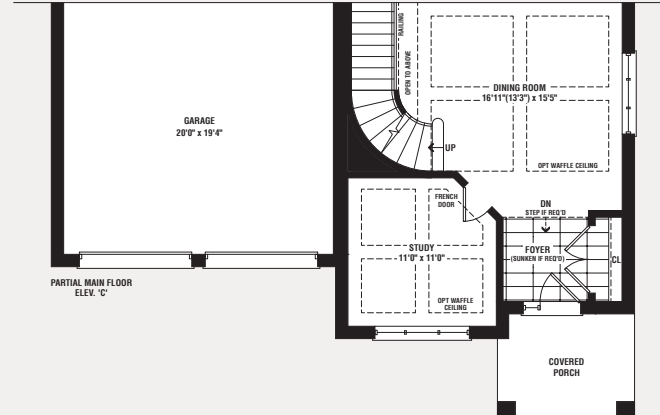
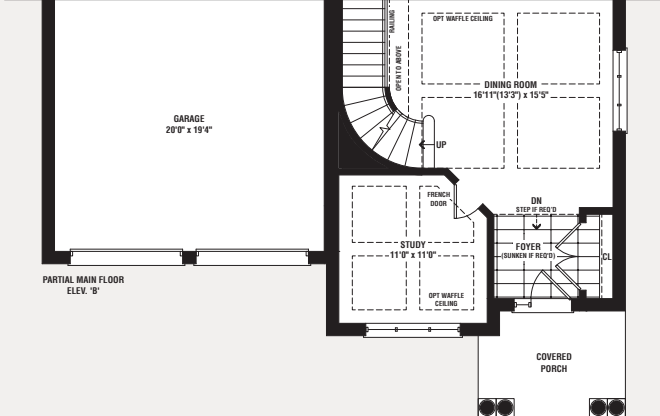
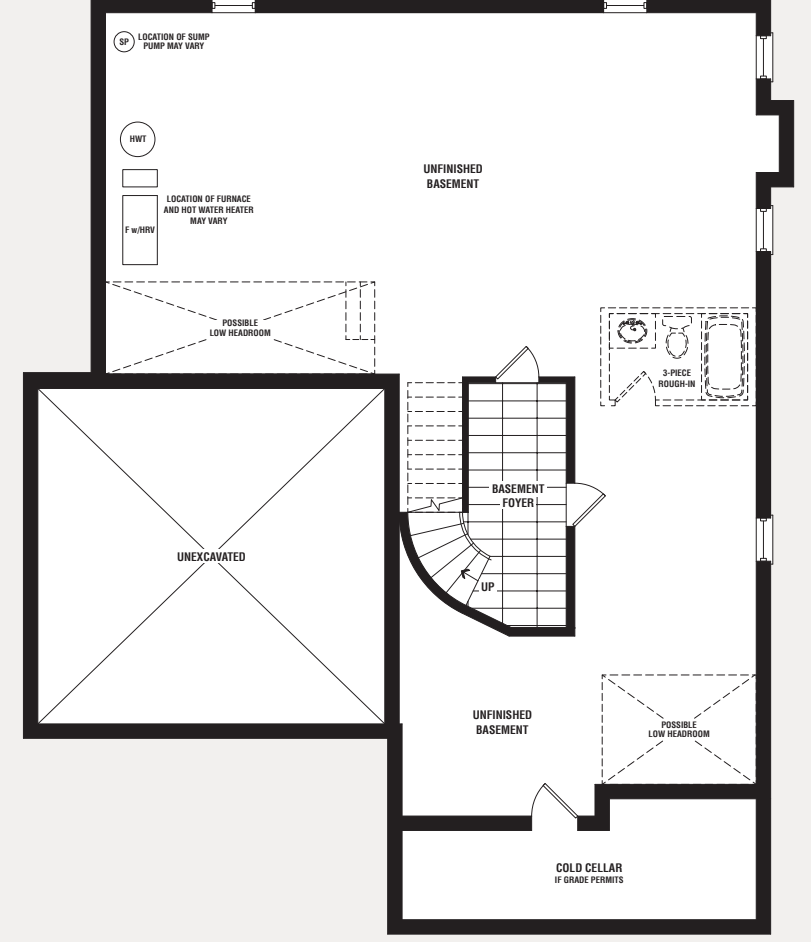
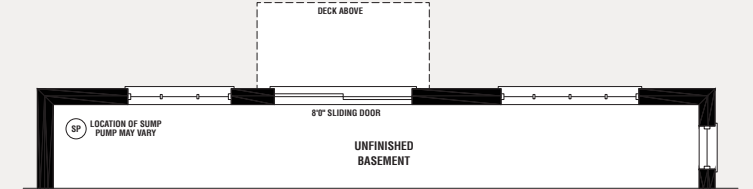
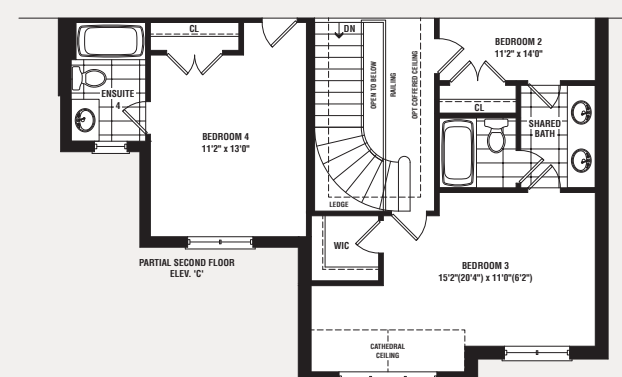
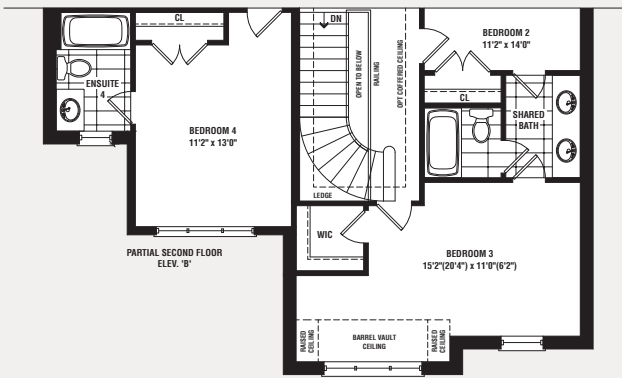
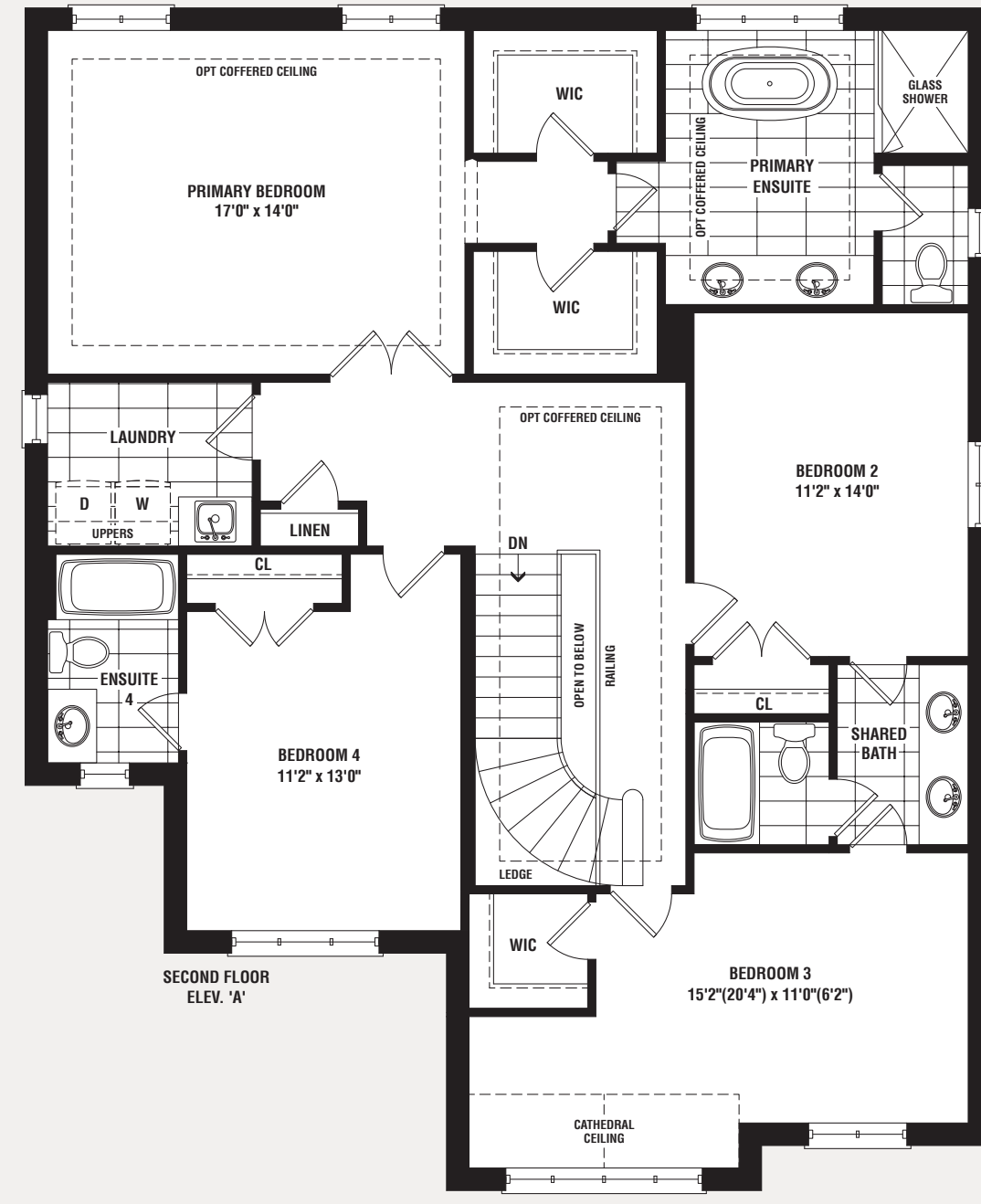
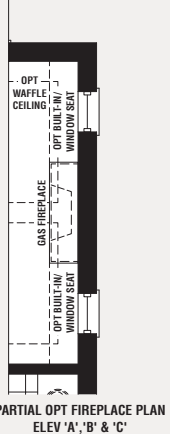
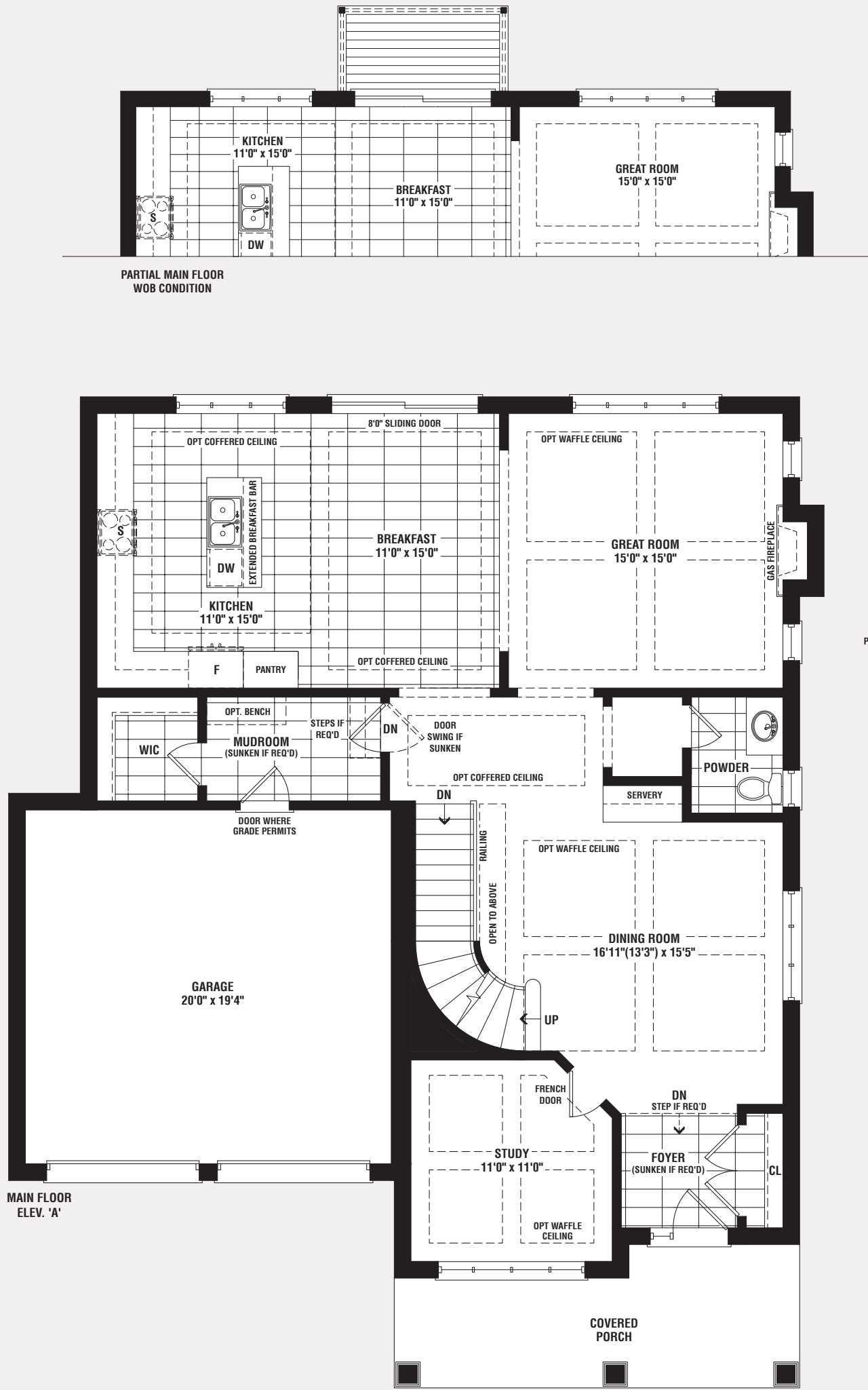
THE HARBOUR | Elev. A 3,208 sq. ft. | Elev. B 3,202 sq. ft. | Elev. C 3,203 sq. ft.





The Harbour

Elev. A 3,208 sq. ft. | Elev. B 3,202 sq. ft. | Elev. C 3,203 sq. ft.
(Includes 87 sq. ft. of Finished Basement Landing)



Materials, specifications, and floor plans are subject to change without notice. Renderings are artist's concept. All floor plans are approximate dimensions. Actual usable floor space may vary from the stated floor area. E. & O.E. 5001



The Coral



Elev. B 3,156 sq. ft.



Elev. C 3,153 sq. ft.

The Coral

Elev. A 3,156 sq. ft. | Elev. B 3,156 sq. ft. | Elev. C 3,153 sq. ft.
(Includes 91 sq. ft. of Finished Basement Landing)

44'



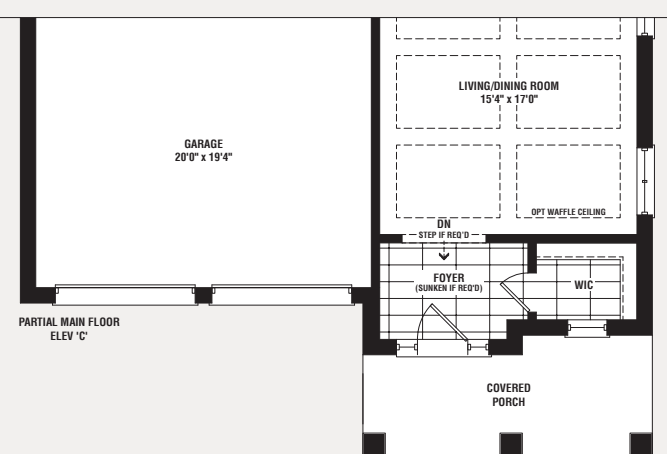
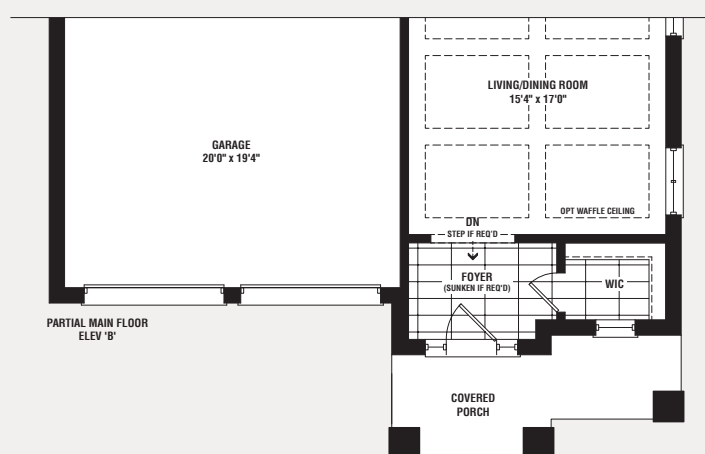
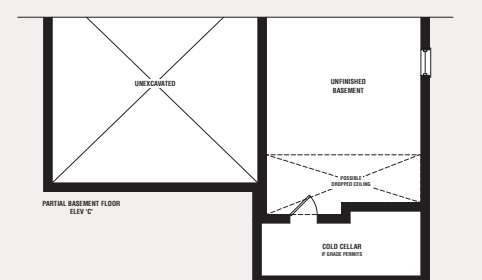
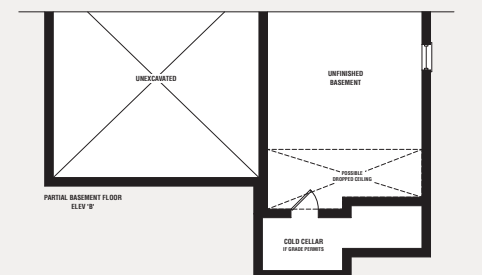
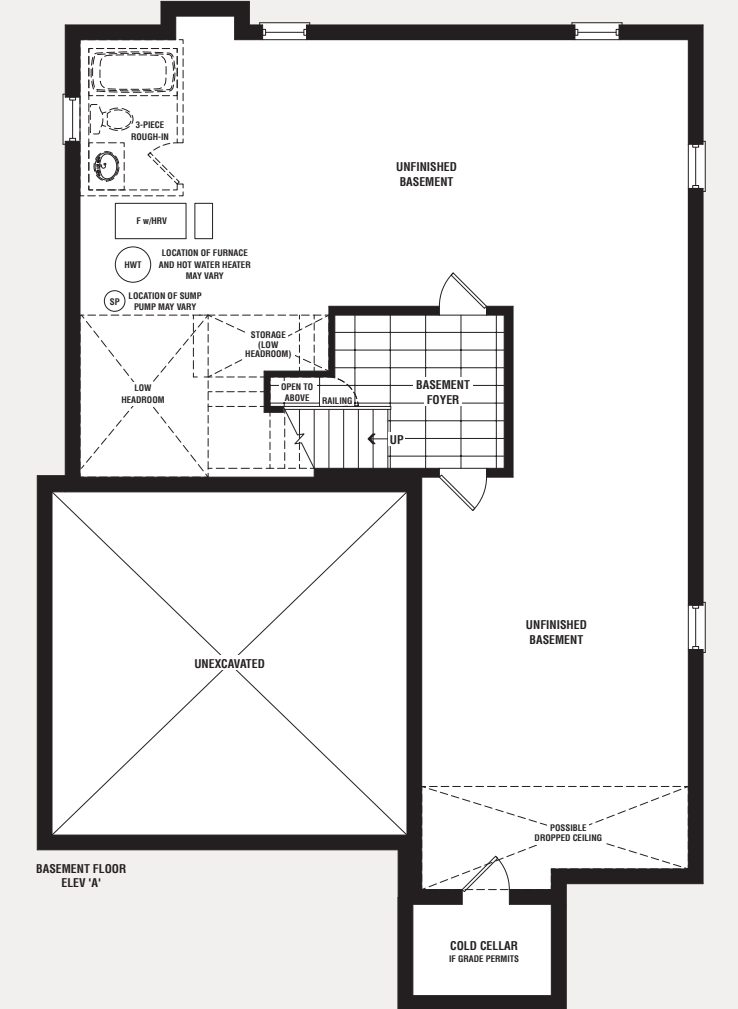
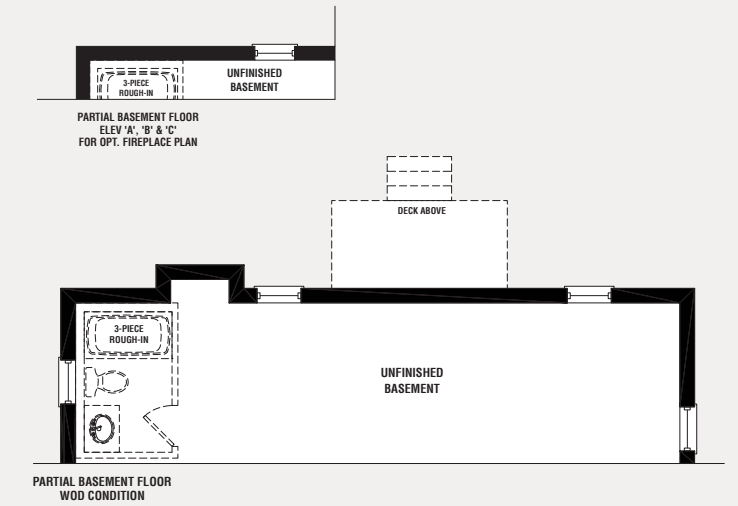
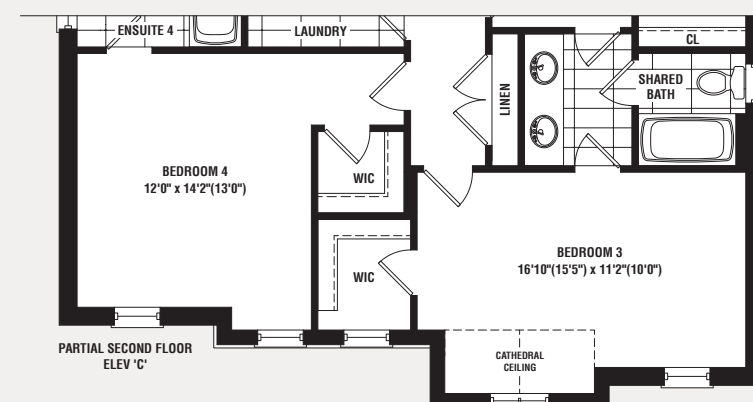
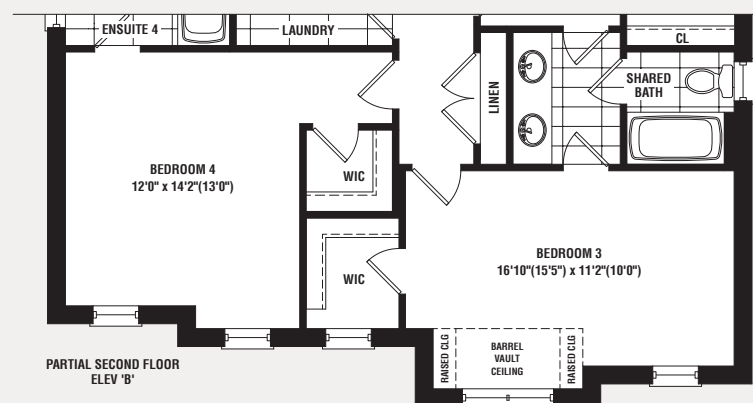
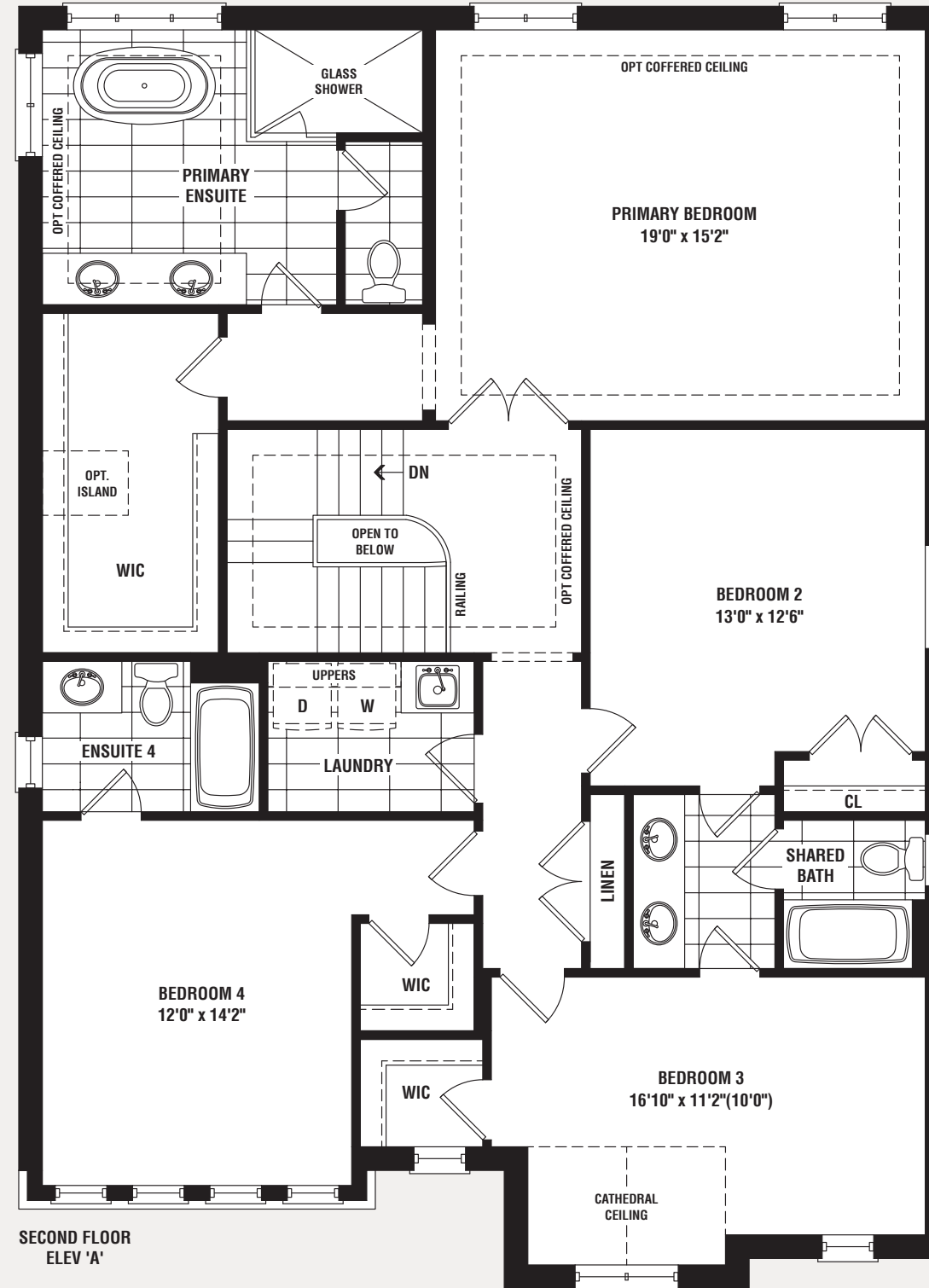
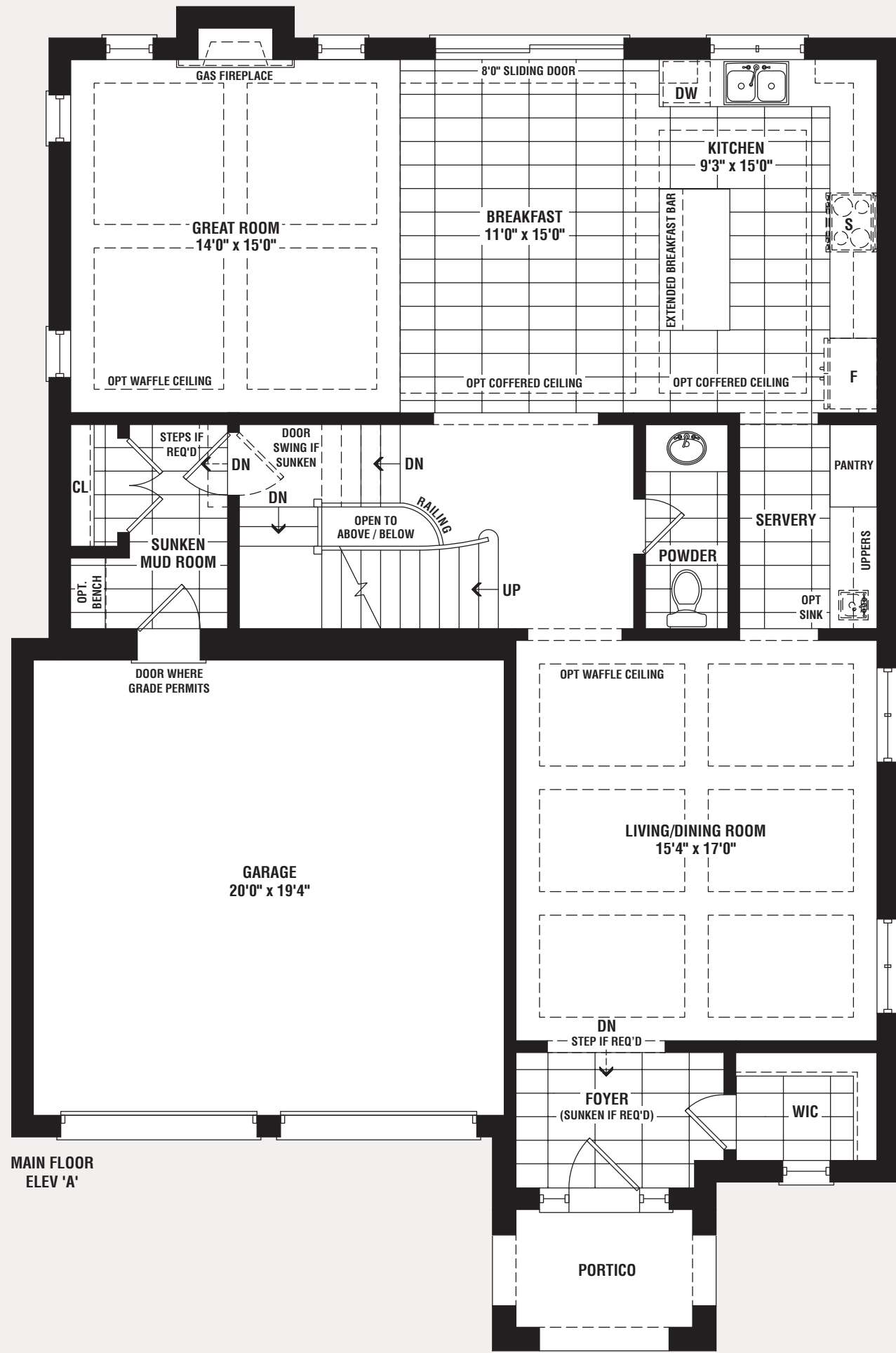
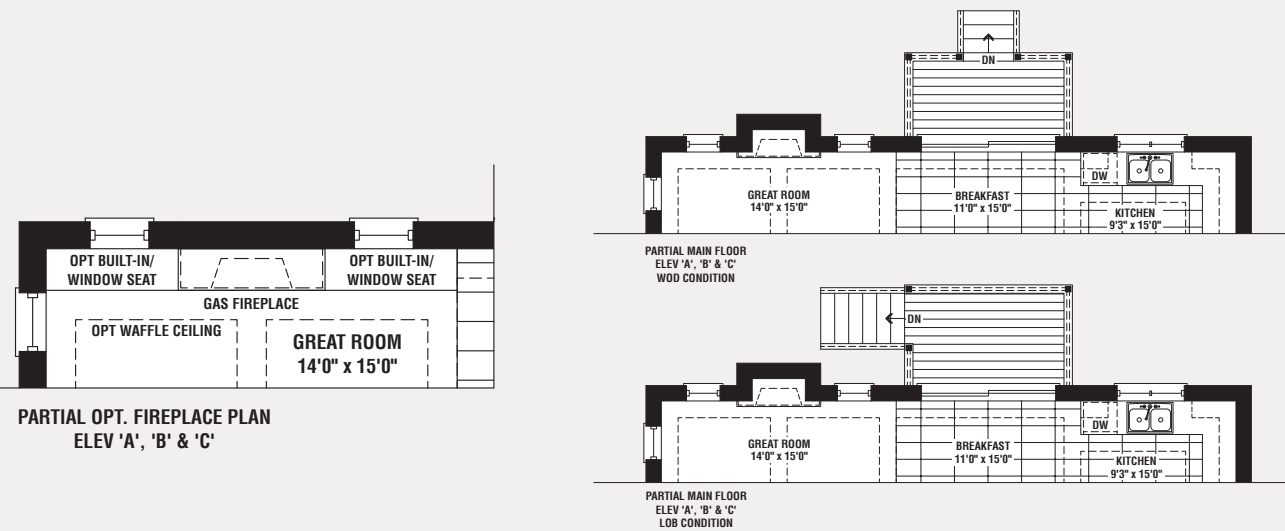
THE CORAL | Elev. A 3,156 sq. ft. | Elev. B 3,156 sq. ft. | Elev. C 3,153 sq. ft.





The Coral

Elev. A 3,156 sq. ft. | Elev. B 3,156 sq. ft. | Elev. C 3,153 sq. ft.
(Includes 91 sq. ft. of Finished Basement Landing)



The Anchor



Elev. B 2,798 sq. ft.



Elev. C 2,804 sq. ft.

The Anchor

44'

Elev. A 2,808 sq. ft. | Elev. B 2,798 sq. ft. | Elev. C 2,804 sq. ft.
(Includes 67 sq. ft. of Finished Basement Landing)



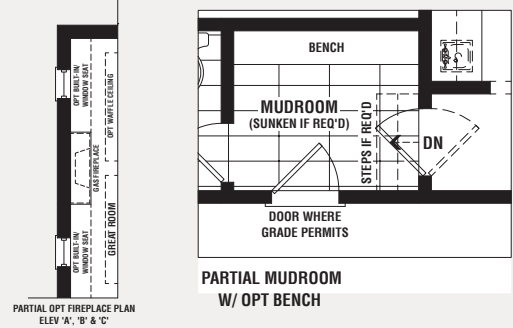
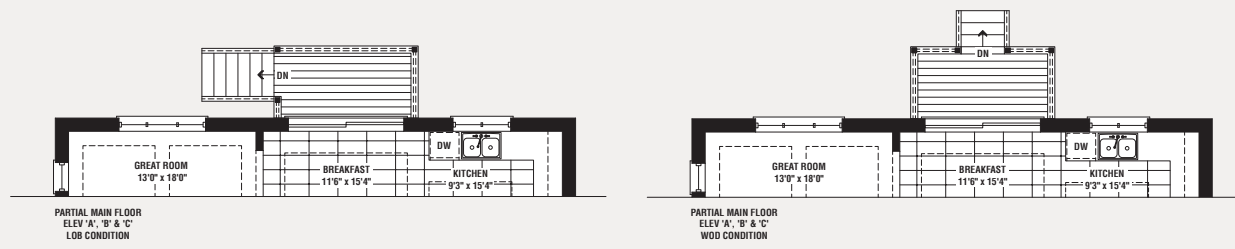
THE ANCHOR | Elev. A 2,808 sq. ft. | Elev. B 2,798 sq. ft. | Elev. C 2,804 sq. ft.



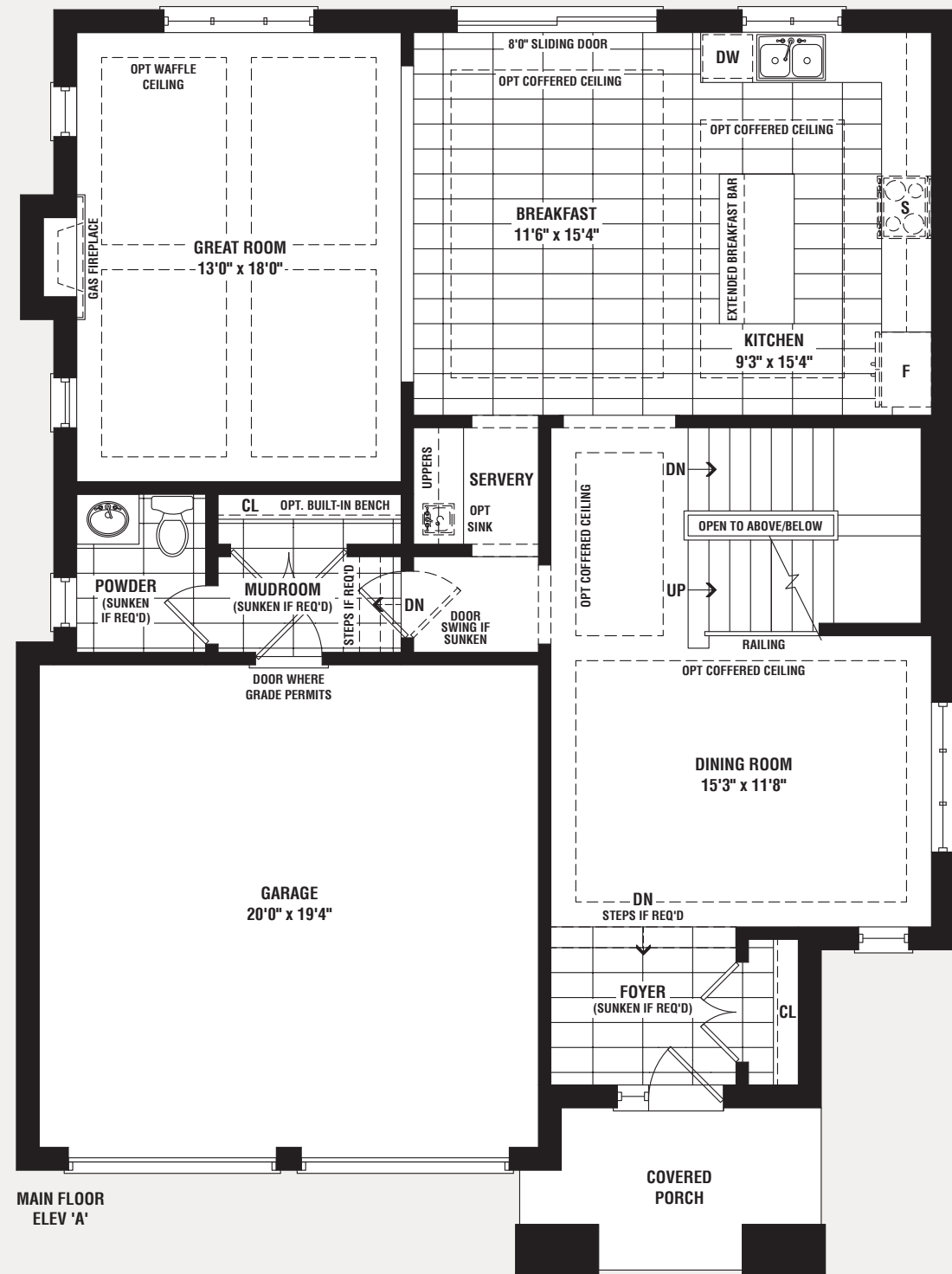


The Anchor

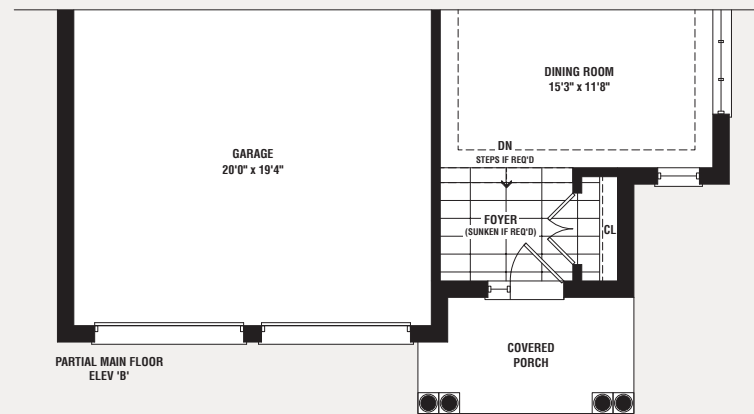
Elev. A 2,808 sq. ft. | Elev. B 2,798 sq. ft. | Elev. C 2,804 sq. ft.
(Includes 67 sq. ft. of Finished Basement Landing)



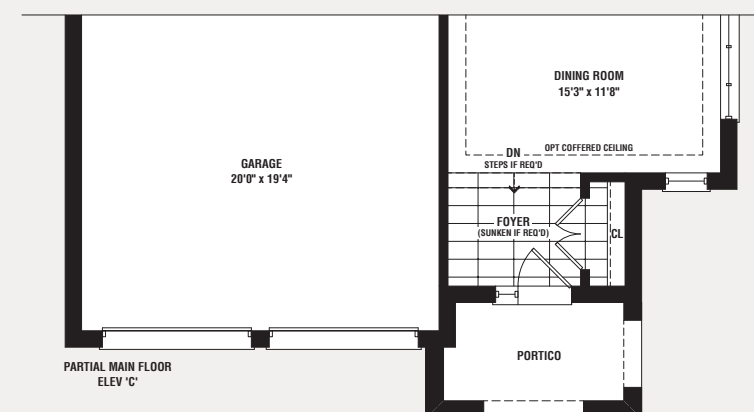
PARTIAL OPT FIREPLACE PLAN ELEV. A, 8' & 10'



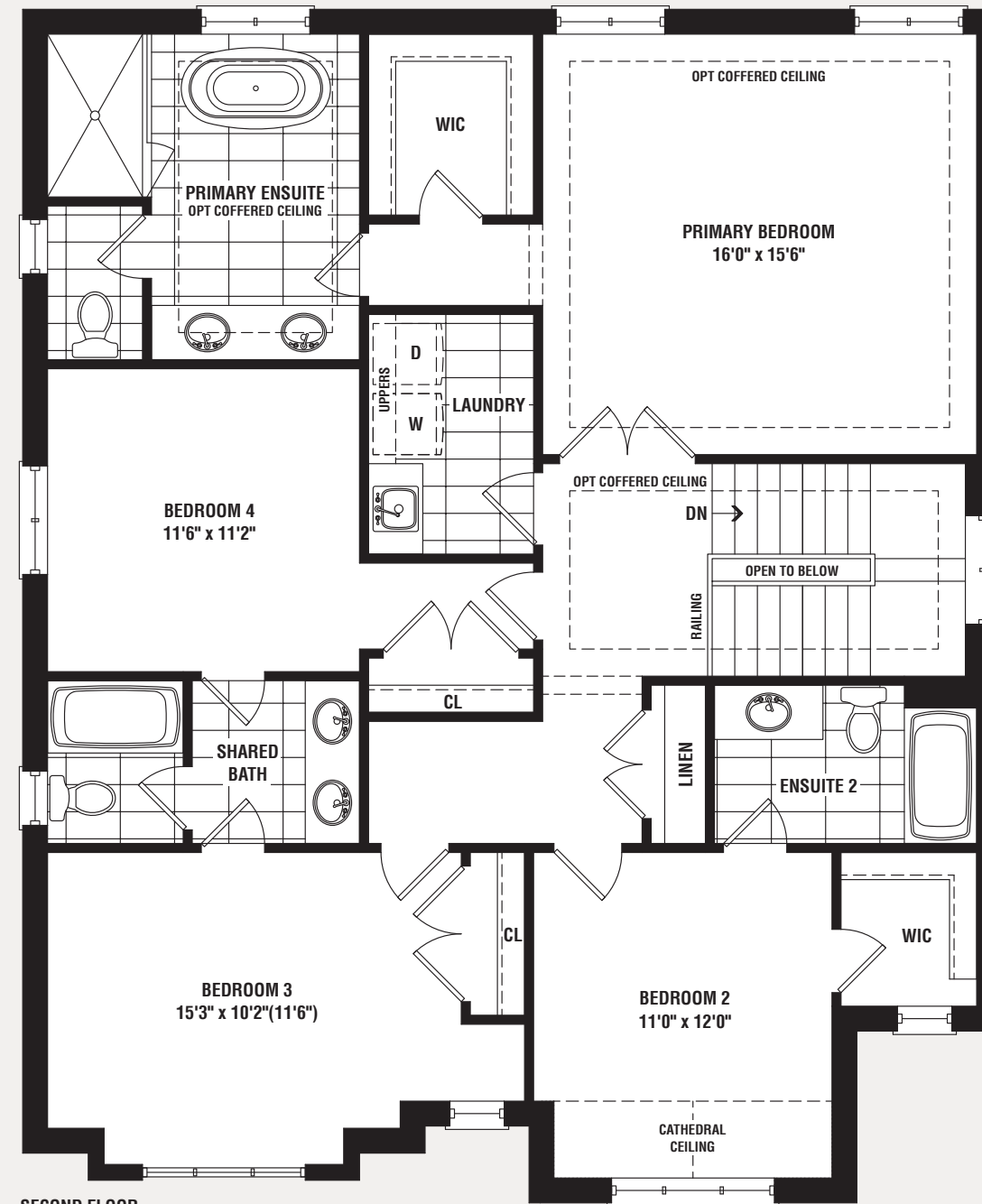
MAIN FLOOR ELEV. A'



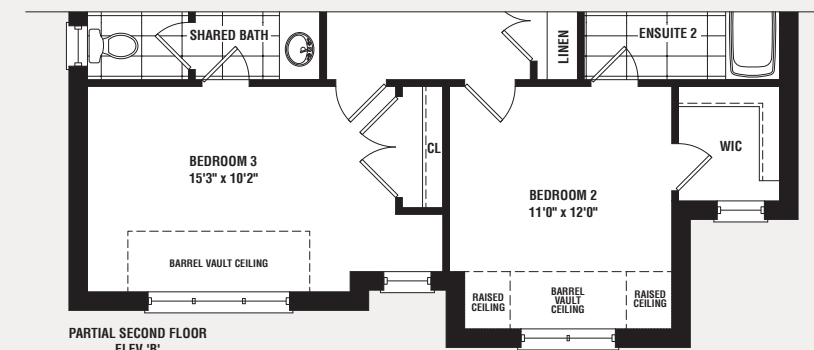
PARTIAL MAIN FLOOR ELEV. B'



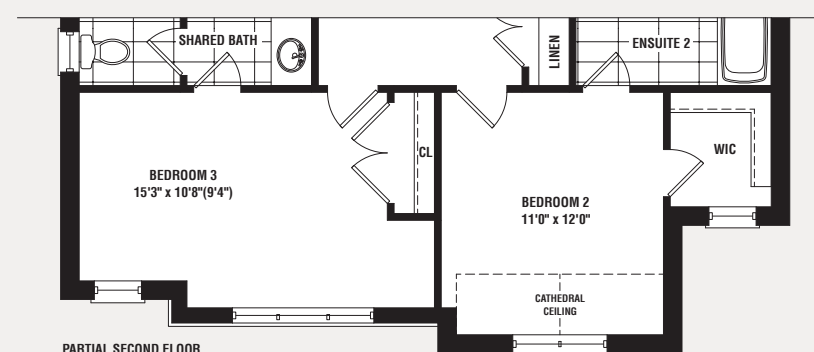
PARTIAL MAIN FLOOR ELEV. C'



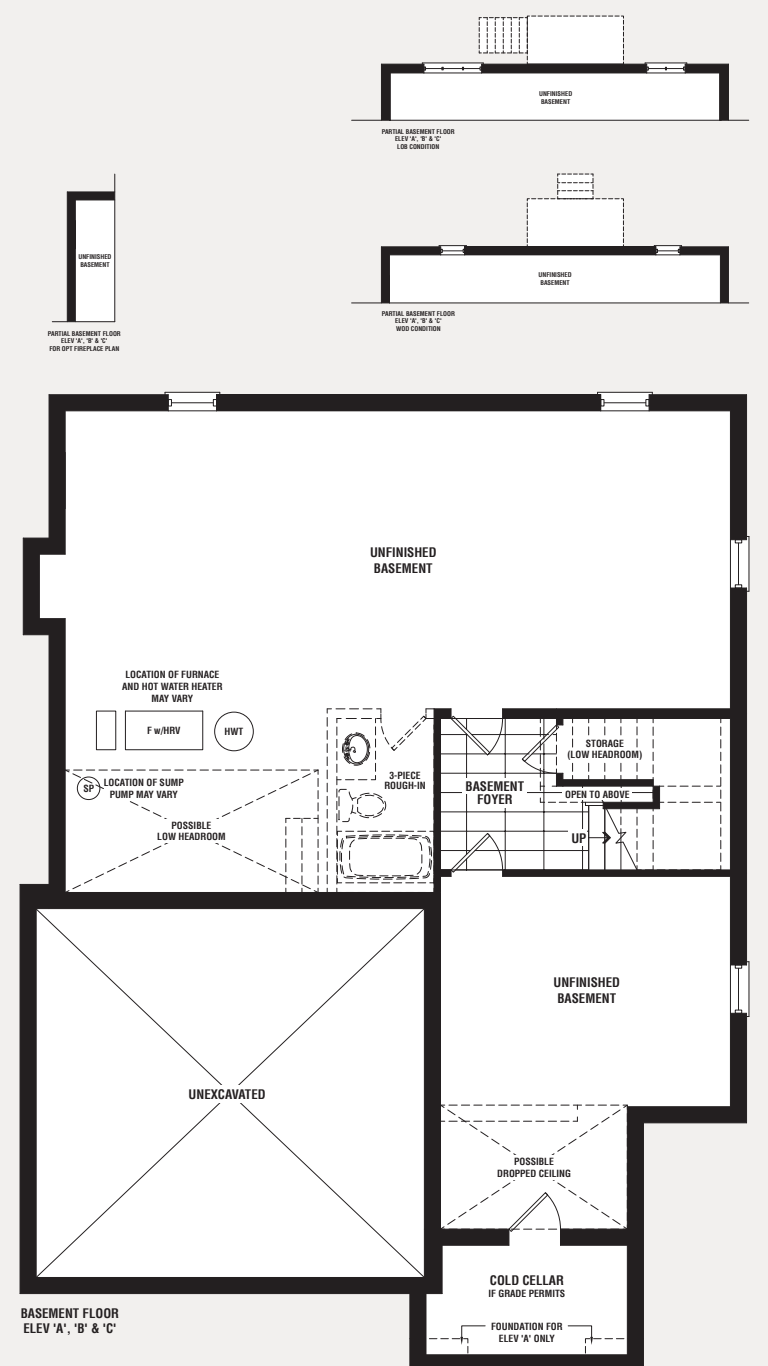
SECOND FLOOR ELEV. A'



PARTIAL SECOND FLOOR ELEV. B'



PARTIAL SECOND FLOOR ELEV. C'



BASEMENT FLOOR ELEV. A', B' & C'