

— 101 —
SPADINA
TORONTO

10 HOME FLOOR

3 bedrooms
981 FT²

1 bedrooms
469 FT²

*1 bedrooms
+ den*
532 FT²

1 bedrooms
457 FT²

2 bedrooms
713 FT²

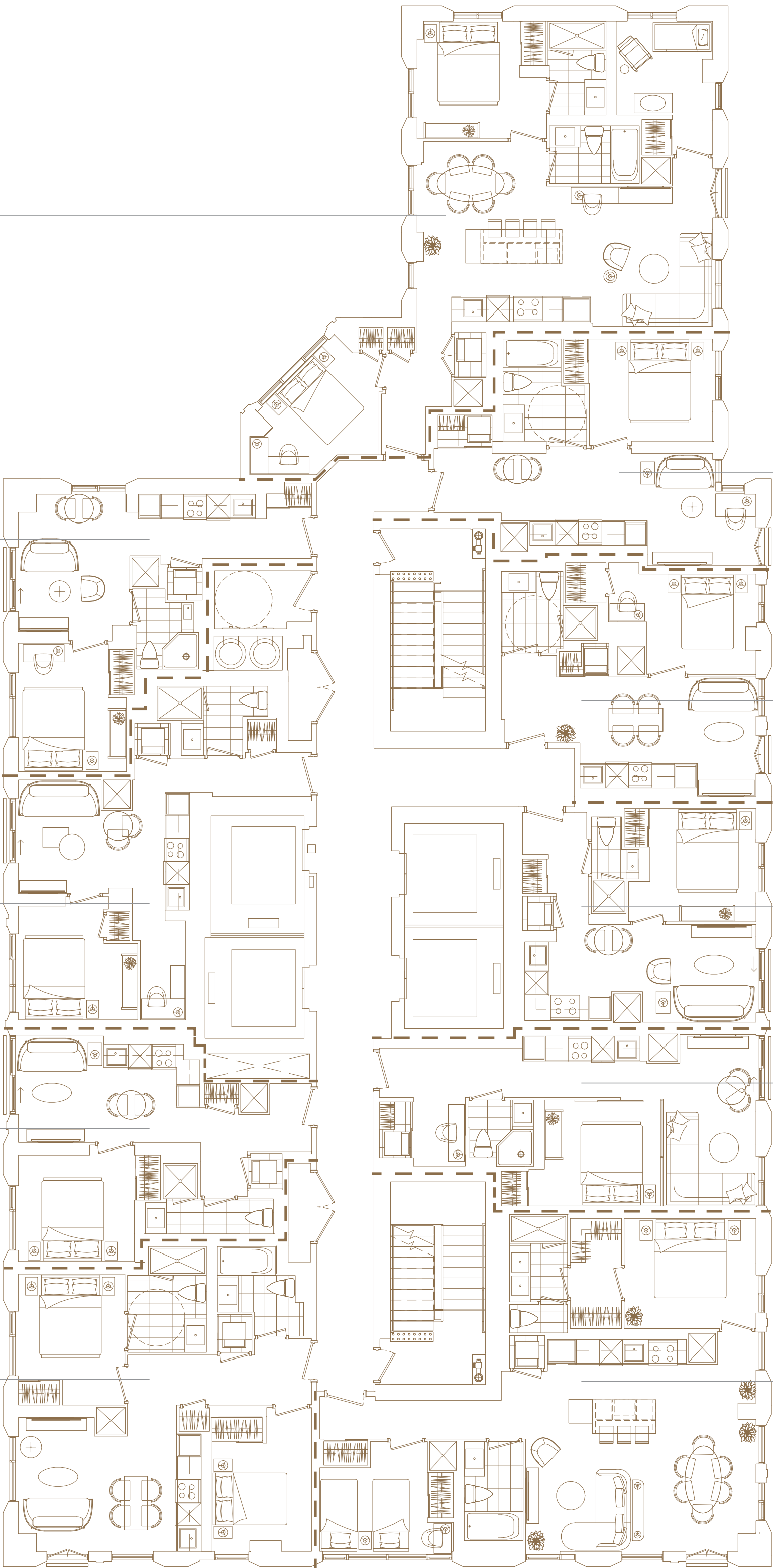
1 bedrooms
483 FT²

1 bedrooms
464 FT²

1 bedrooms
441 FT²

*1 bedrooms
+ den*
509 FT²

2 bedrooms
957 FT²



C532

Bedrooms

One

Baths

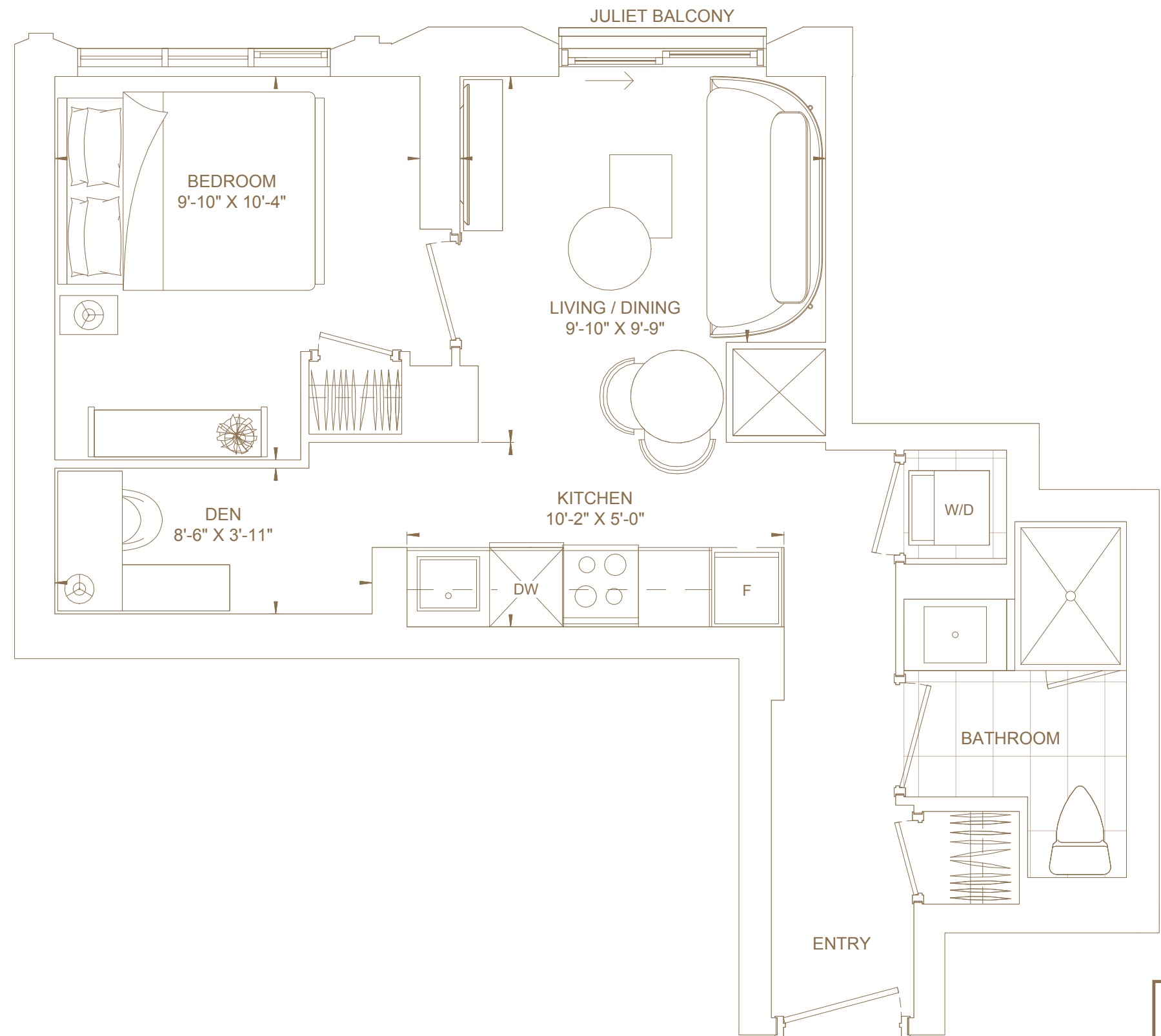
One

Total Living Area

 532 ft^2

Views

North



FLOORS 16 TO 30

B469

Bedrooms

One

Baths

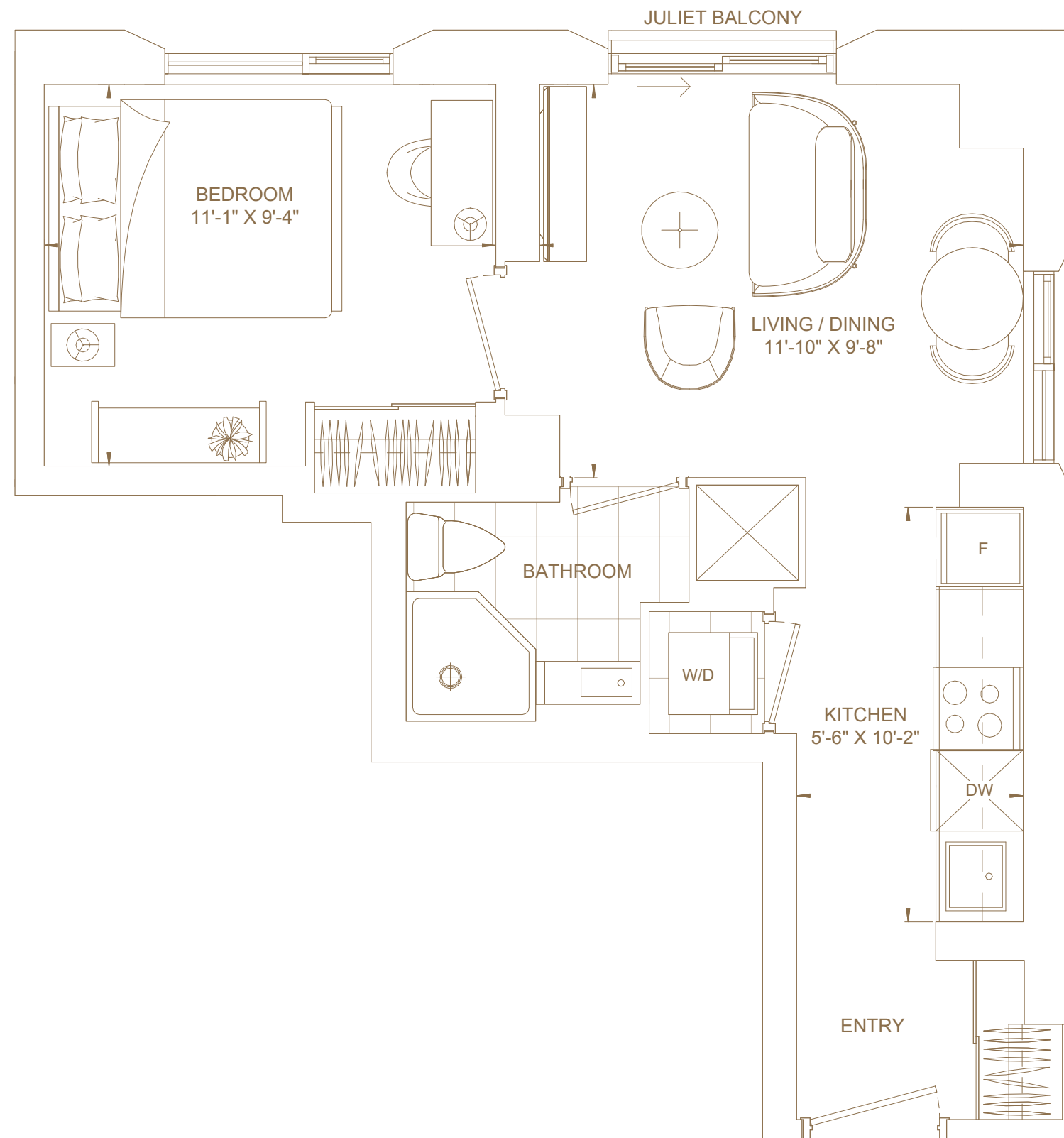
One

Total Living Area

469 ft²

Views

North West



FLOORS 16 TO 30

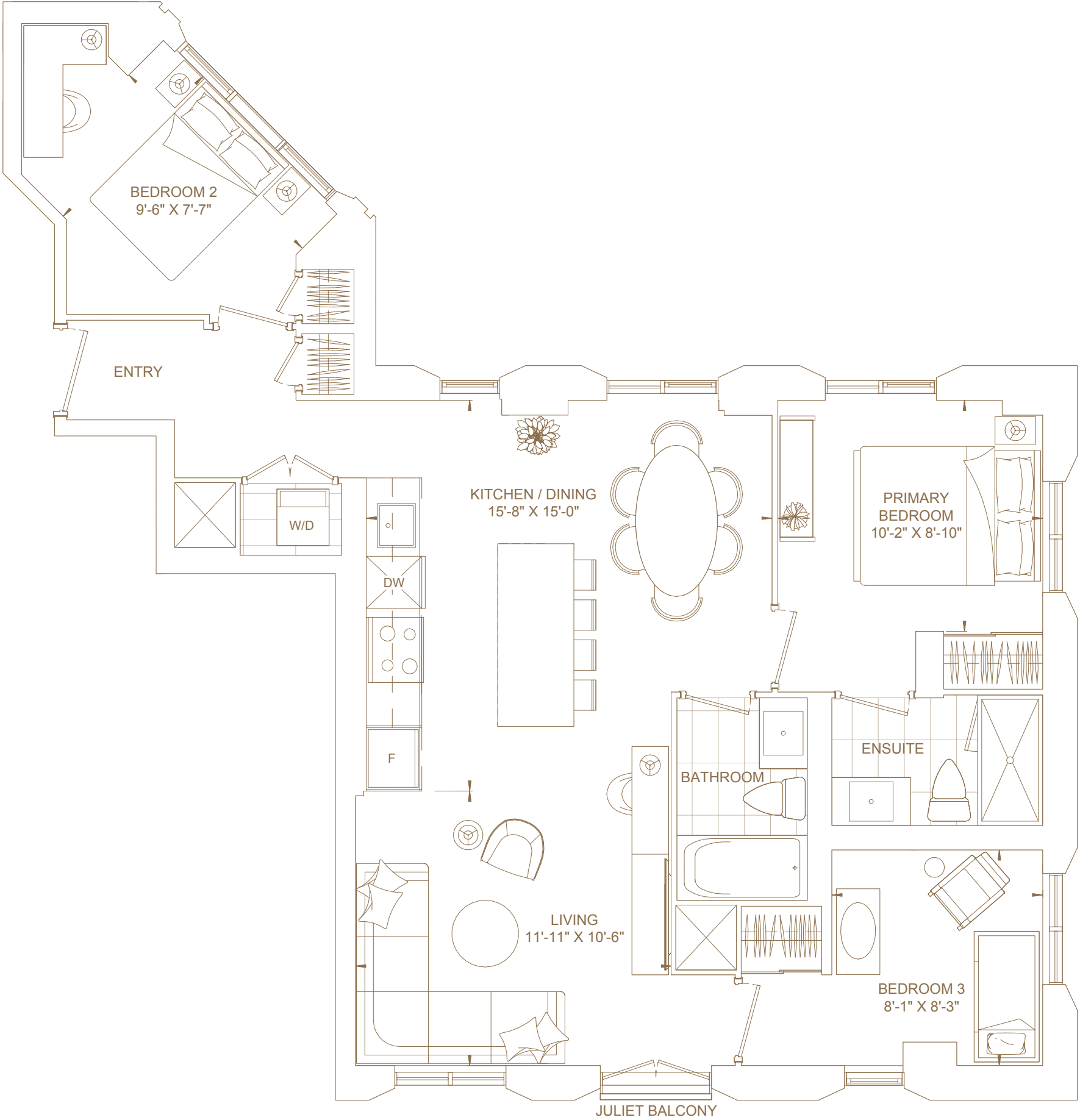
E981

Bedrooms
Three

Baths
Two

Total Living Area
981 *ft*²

Views
Noth East South



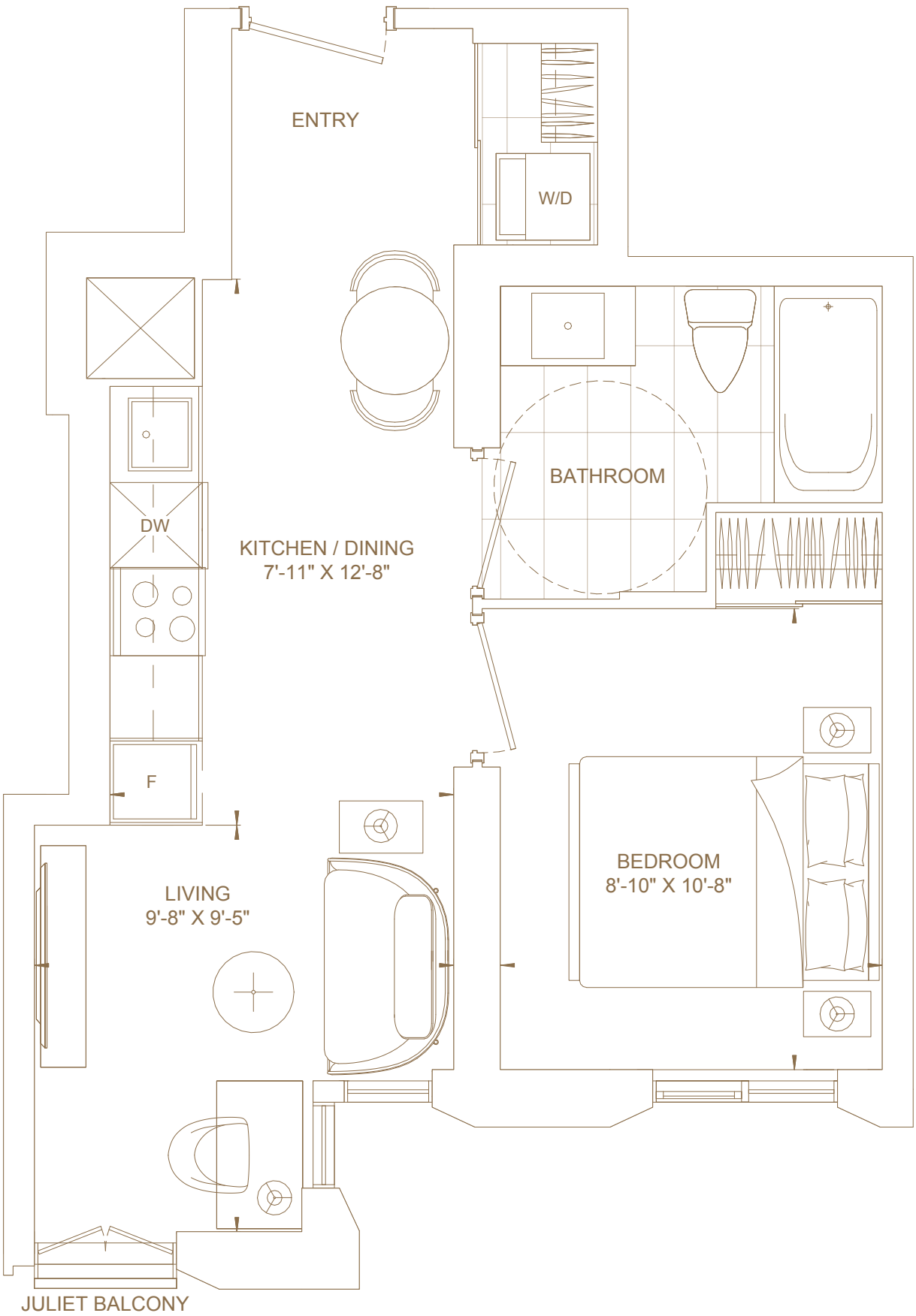
B483

Bedrooms
One

Baths
One

Total Living Area
483 *sf*²

Views
South



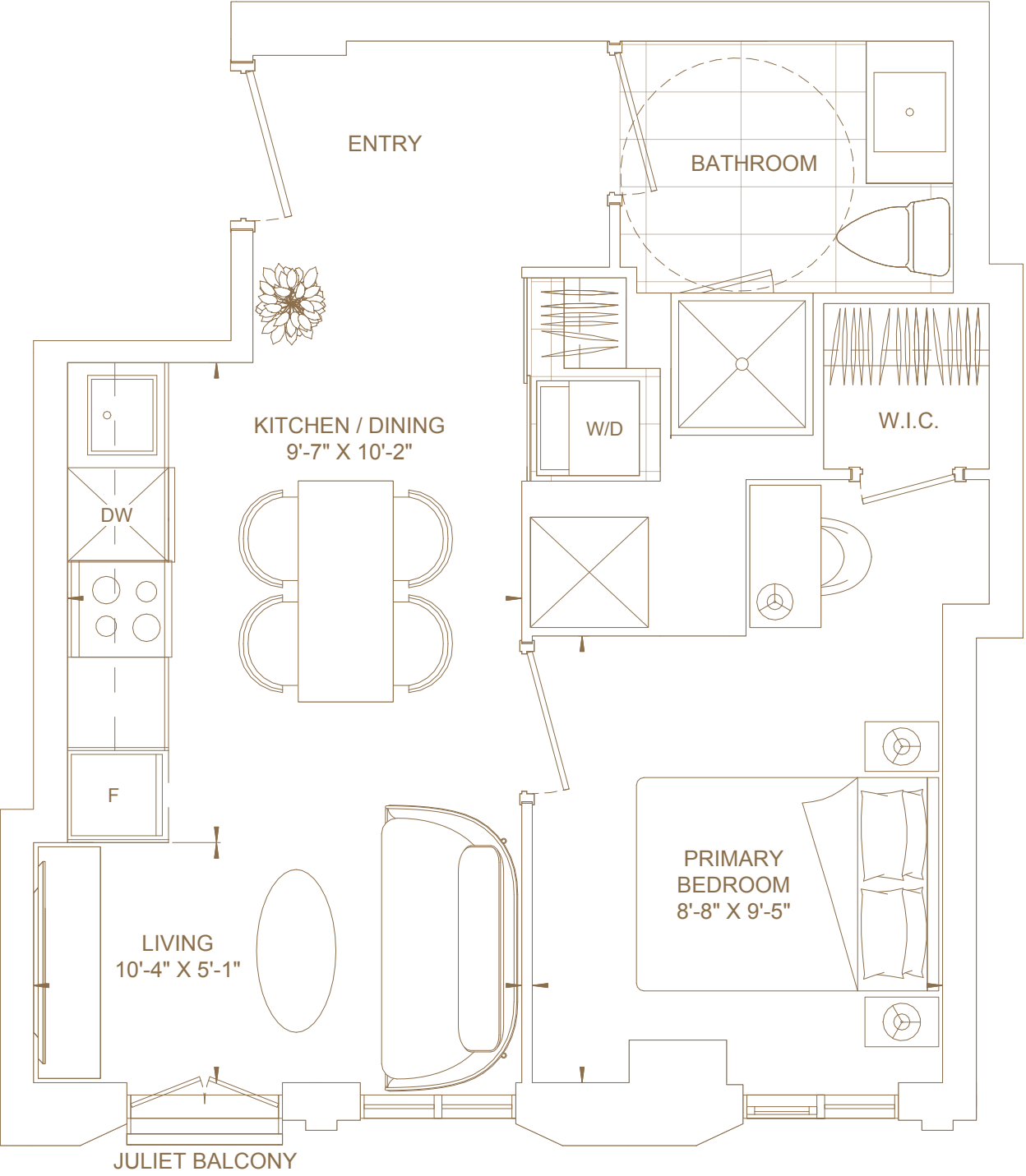
B464

Bedrooms
One

Baths
One

Total Living Area
464 *ft*²

Views
South



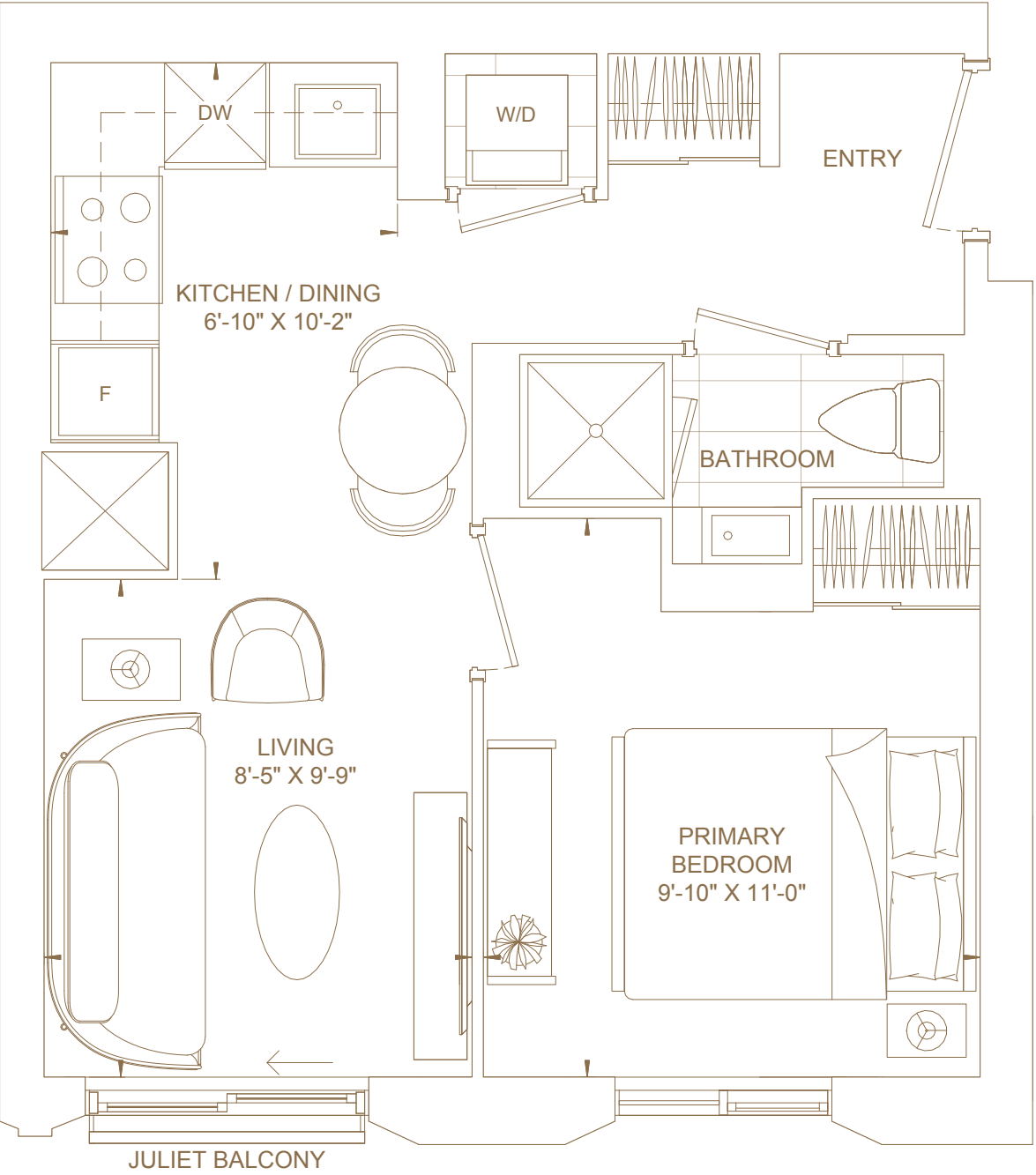
B441

Bedrooms
One

Baths
One

Total Living Area
441sf²

Views
South



B485

Bedrooms

One

Baths

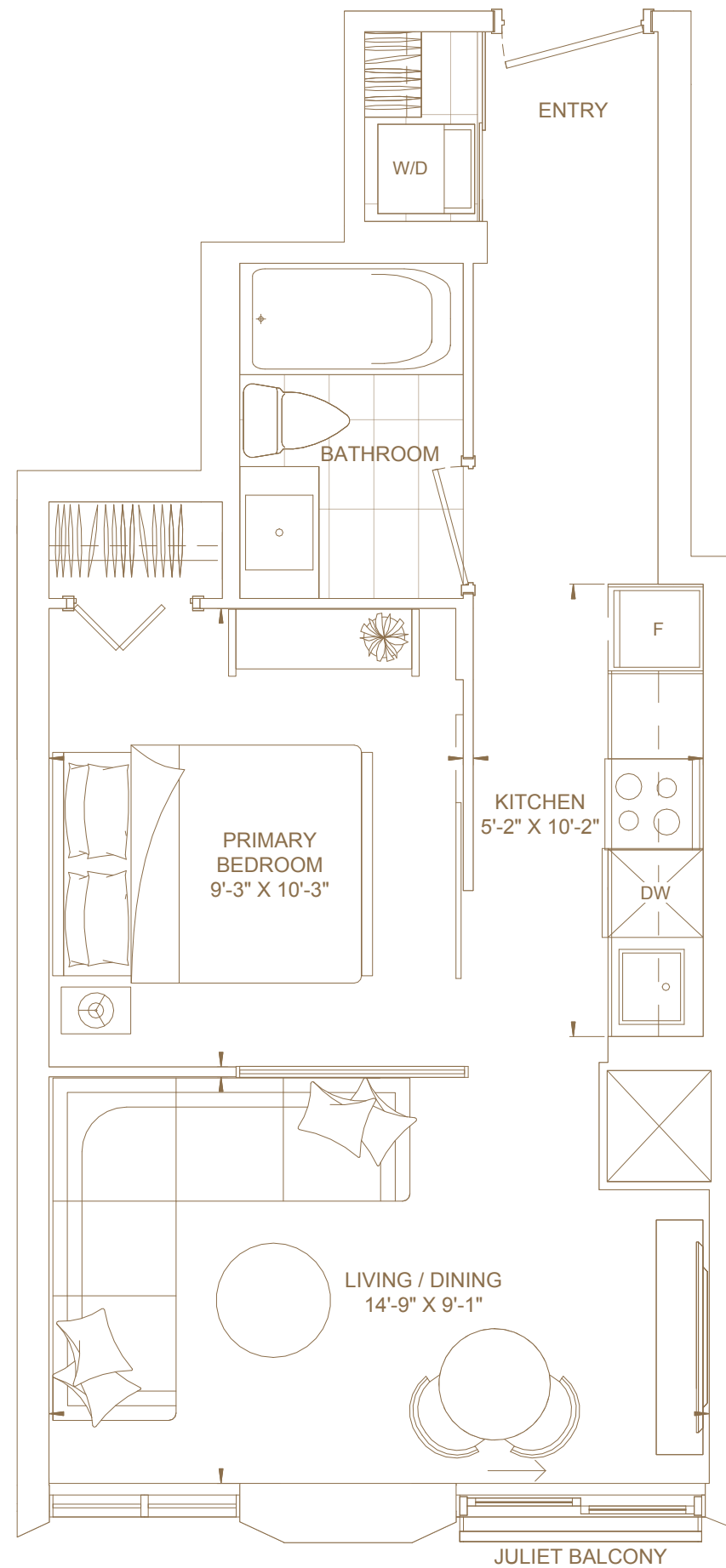
One

Total Living Area

485 ft²

Views

South



D957

Bedrooms

Two

Baths

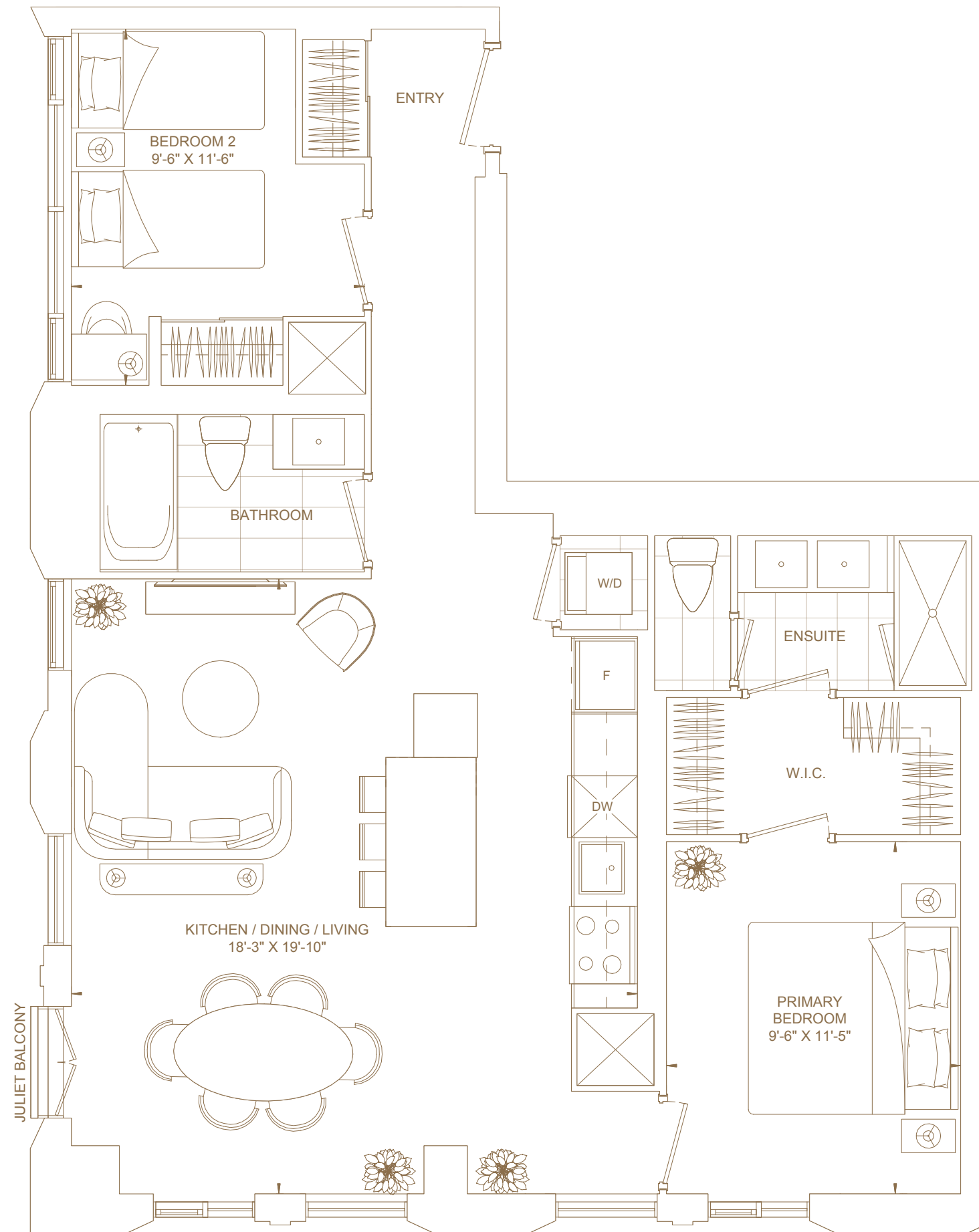
Two

Total Living Area

957 ft²

Views

South West



D713

Bedrooms

Two

Baths

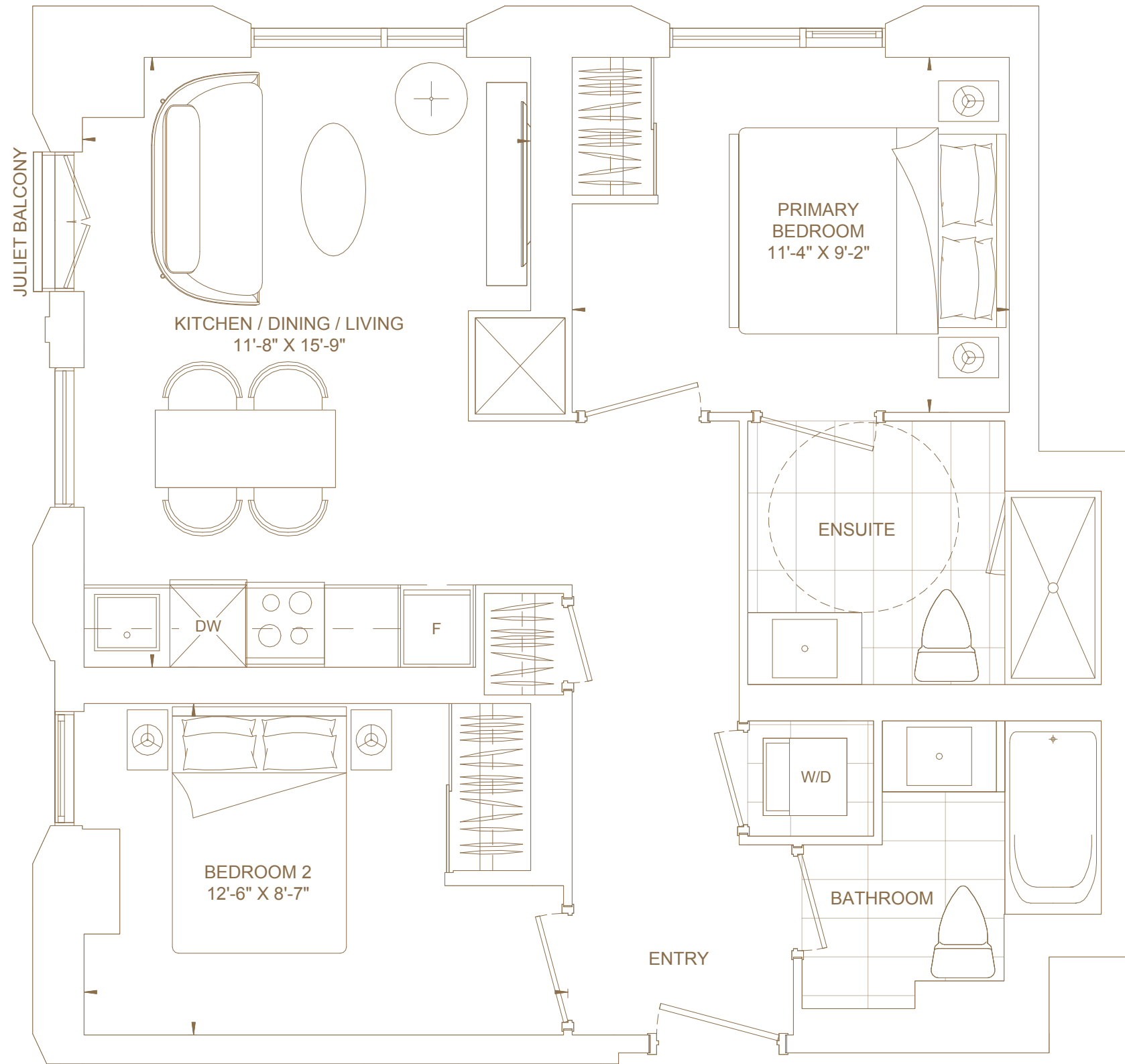
Two

Total Living Area

713 ft²

Views

North West



B457

Bedrooms
One

Baths
One

Total Living Area
457 ft²

Views
North

