

— 101 —

SPADINA

TORONTO

5 HOME FLOOR

3 bedrooms

1446 FT²

2 bedrooms

993 FT²

3 bedrooms

1169 FT²

3 bedrooms

1100 FT²

3 bedrooms

1466 FT²



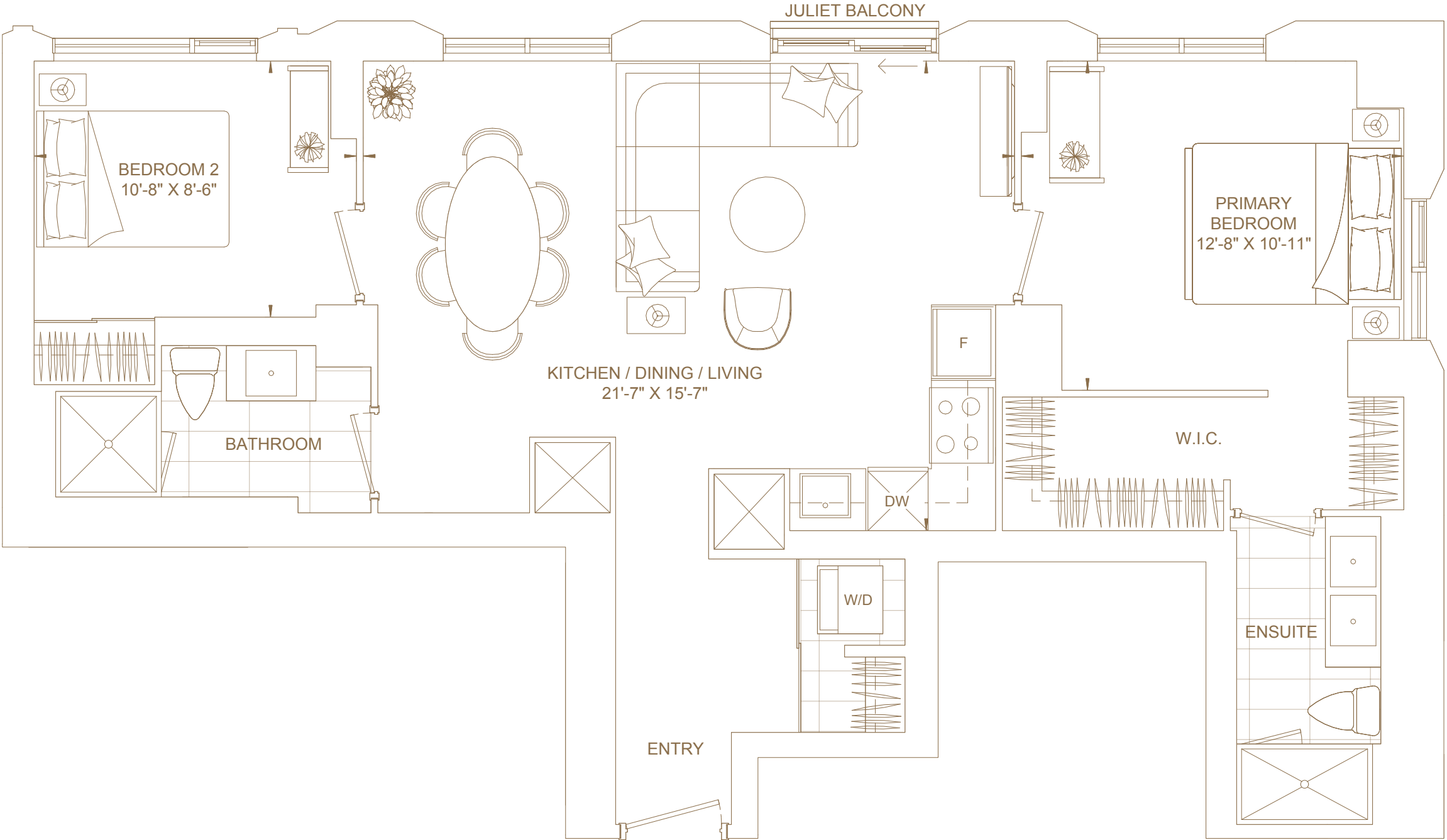
D993

Bedrooms
Two

Baths
Two

Total Living Area
993 *ft*²

Views
North East



E1446

Bedrooms

Three

Baths

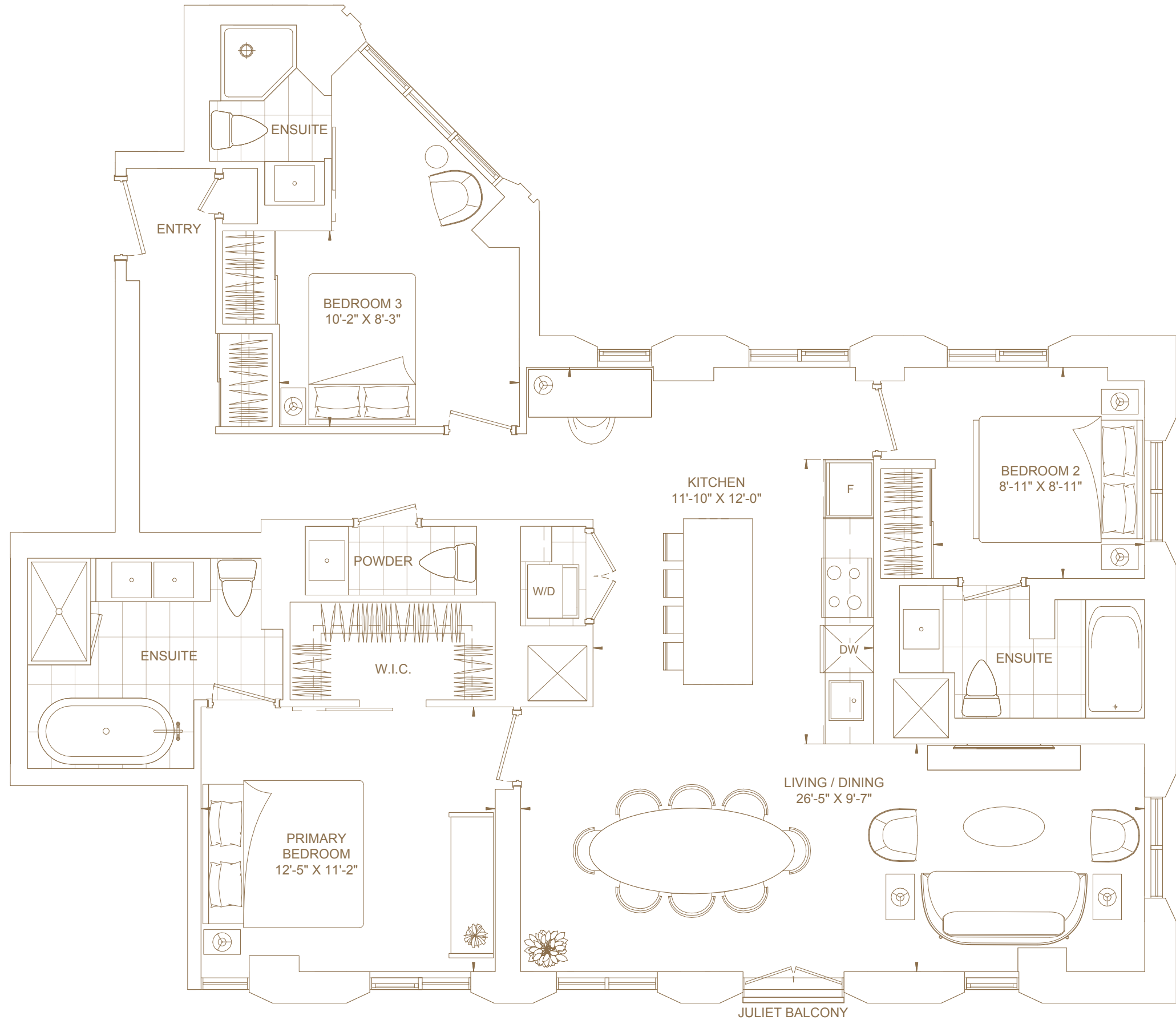
Four

Total Living Area

1,446 ft²

Views

North East South



E1100

Bedrooms

Three

Baths

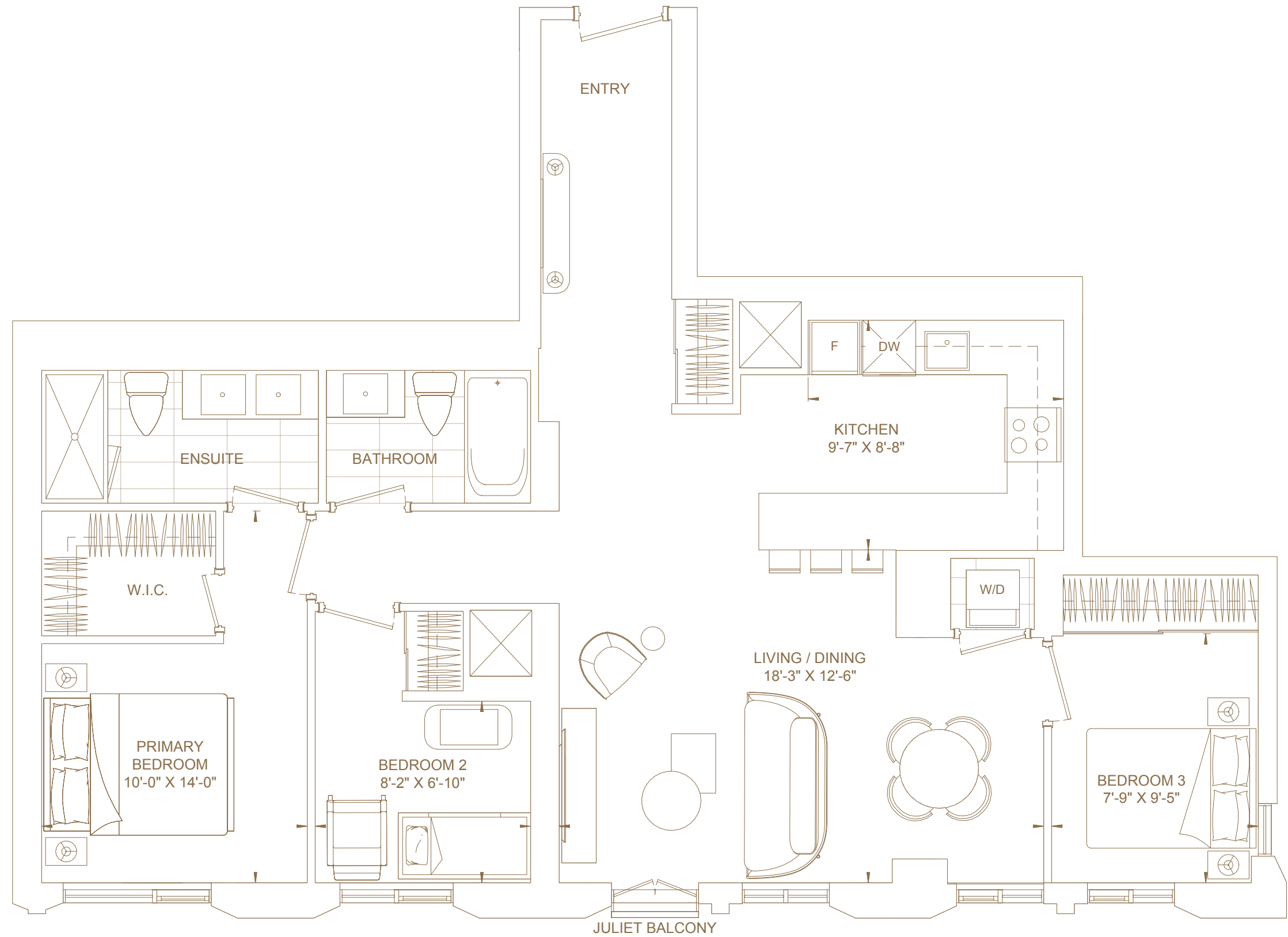
Two

Total Living Area

1,100 ft²

Views

South



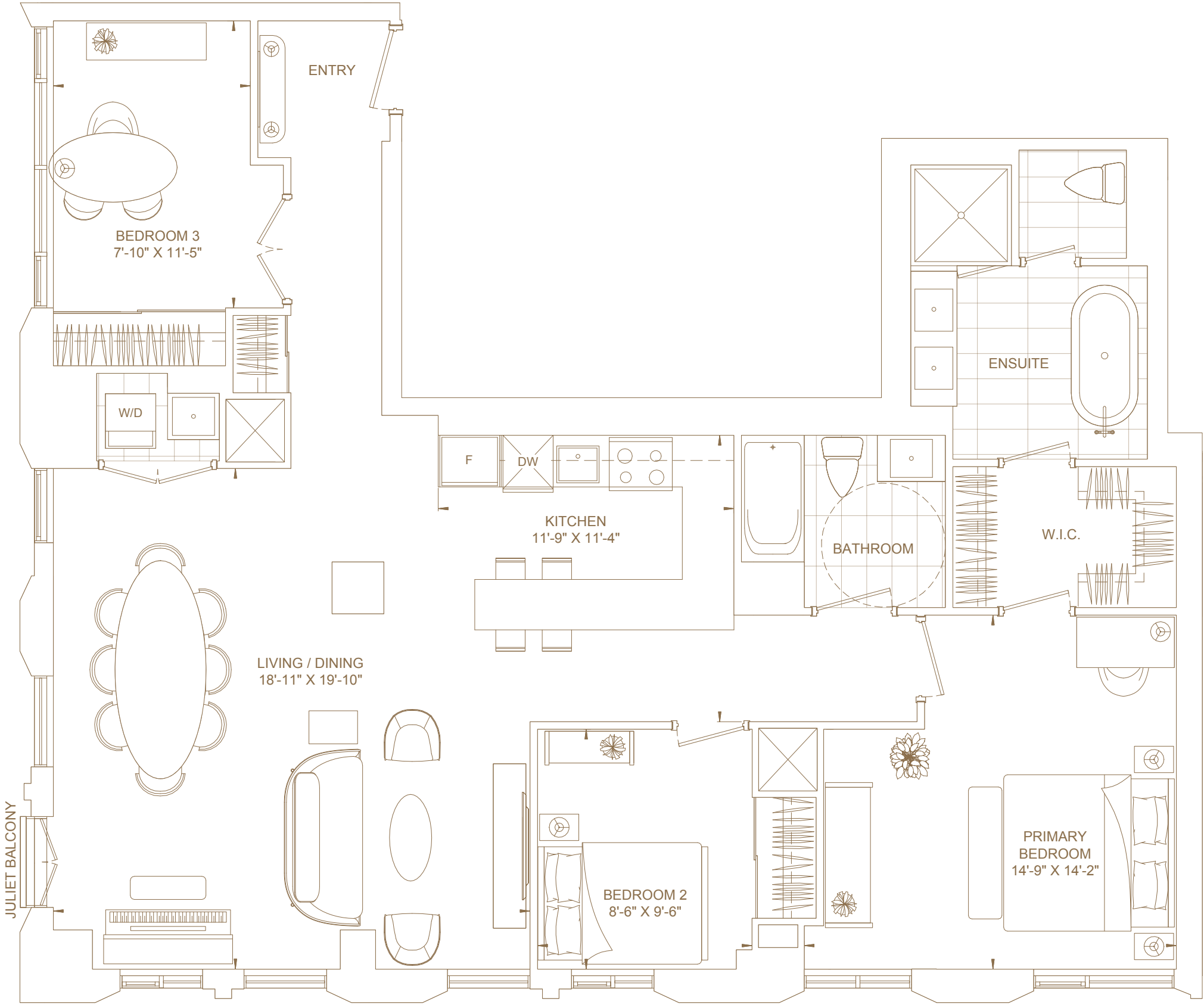
E1466

Bedrooms
Three

Baths
Two

Total Living Area
1,466 *ft*²

Views
South West



E1169

Bedrooms

Three

Baths

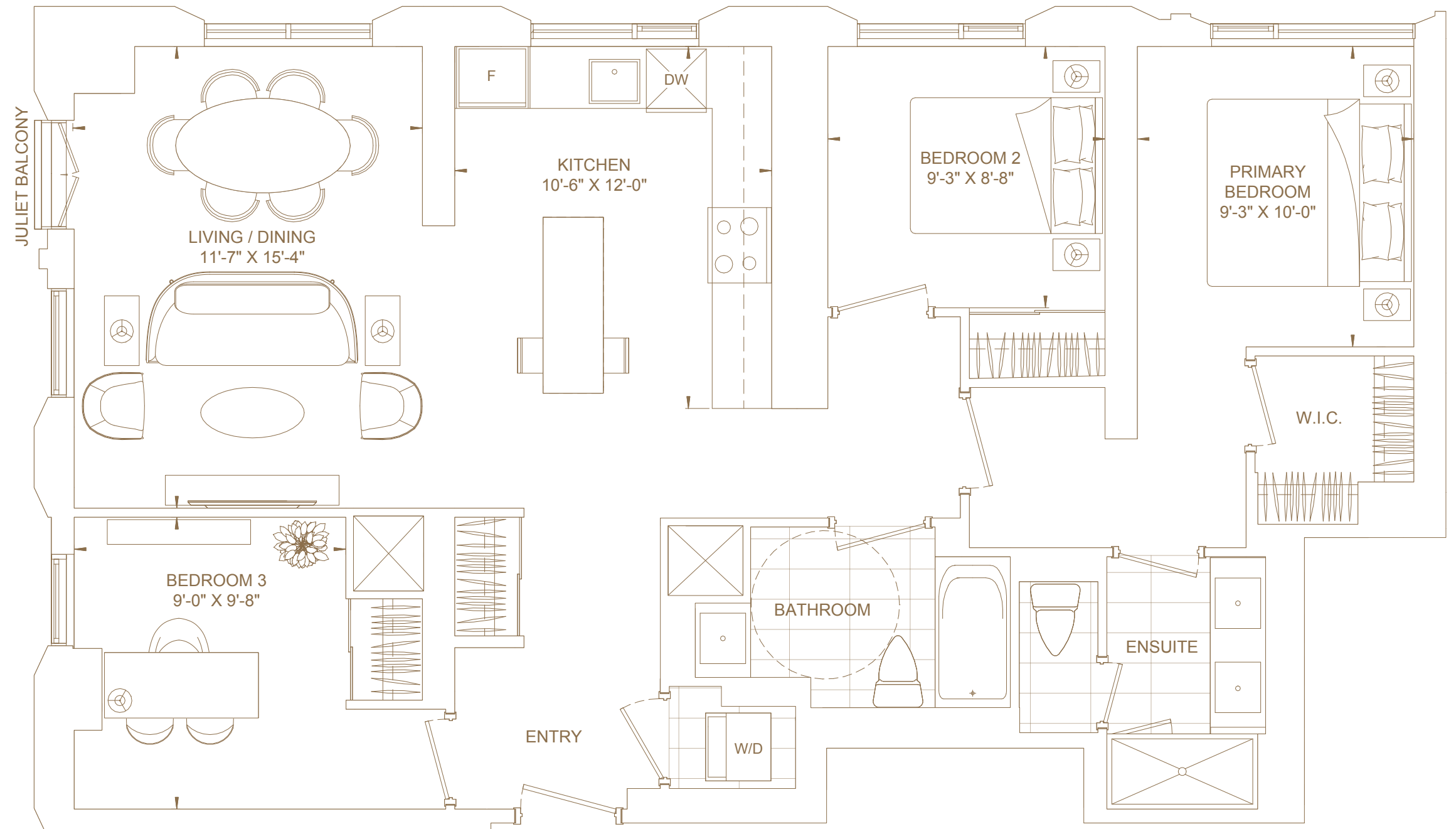
Two

Total Living Area

1,169 ft²

Views

North West



FLOORS LPH, PH01,
PH02 & UPH

