

— 101 —

SPADINA

TORONTO

7 HOME FLOOR

3 bedrooms

990 FT²

2 bedrooms

1044 FT²

2 bedrooms

762 FT²

2 bedrooms

690 FT²

2 bedrooms

949 FT²

2 bedrooms

712 FT²

2 bedrooms

957 FT²



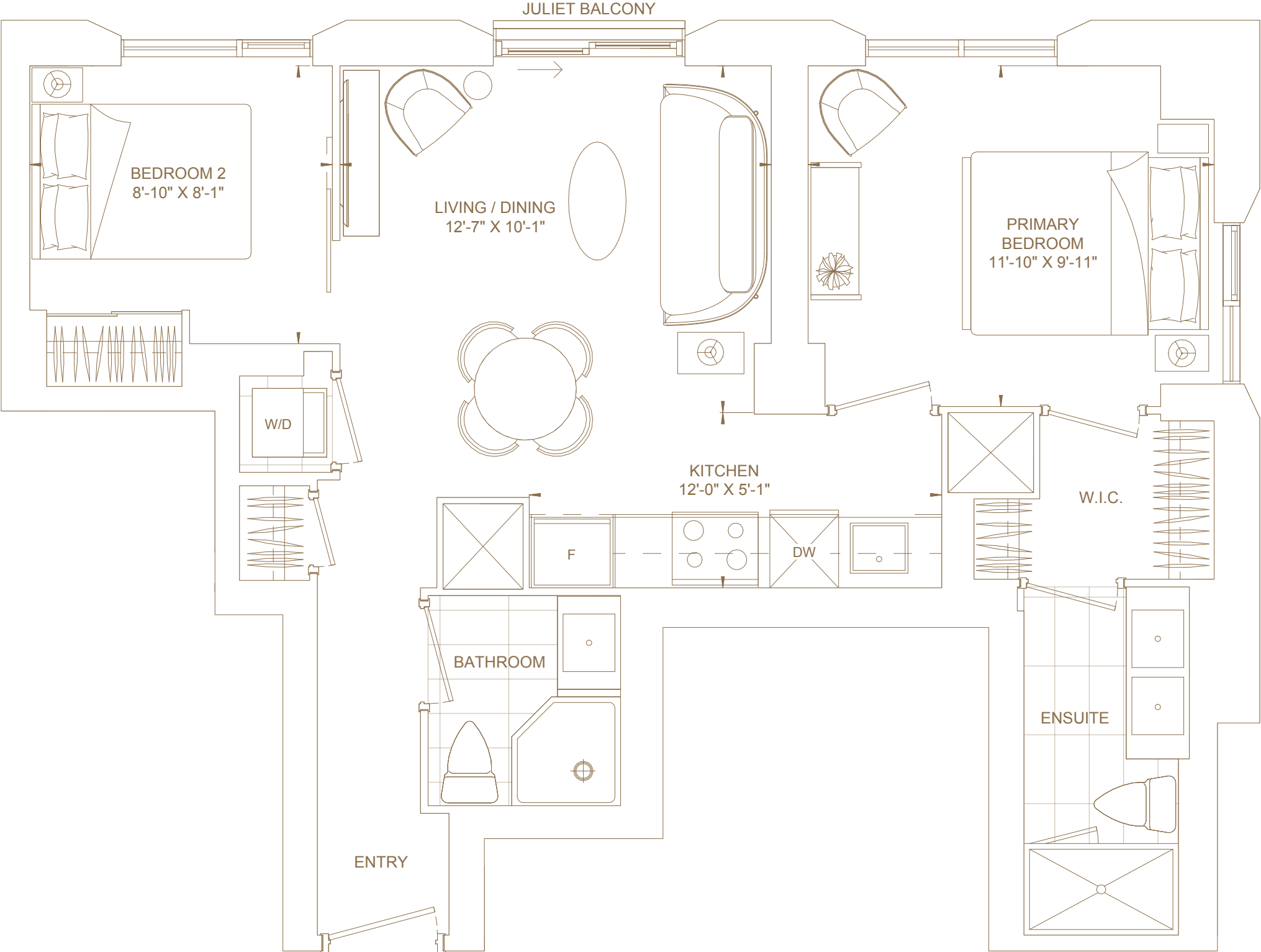
D762

Bedrooms
Two

Baths
Two

Total Living Area
762 ft²

Views
North East



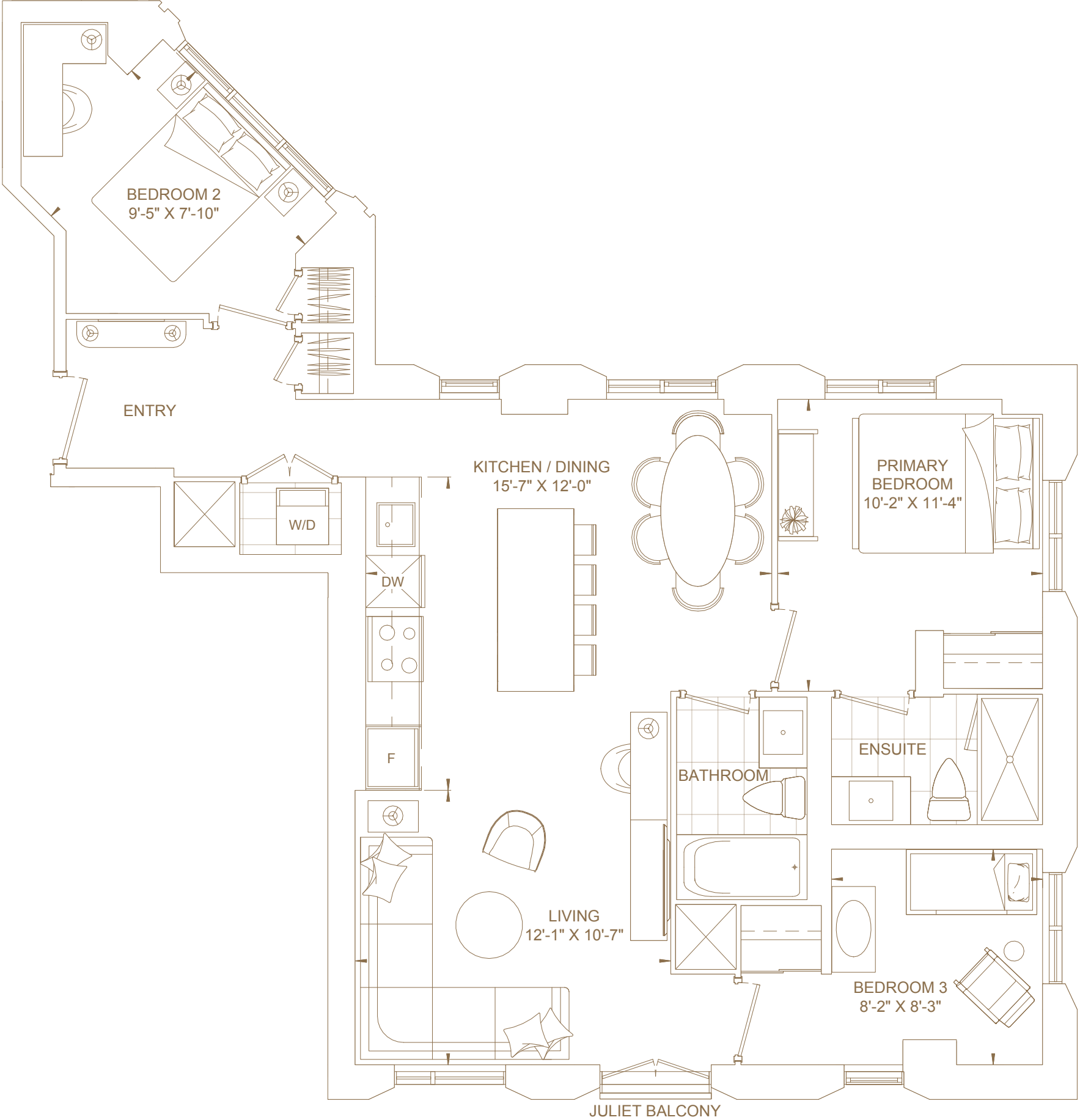
E990

Bedrooms
Three

Baths
Two

Total Living Area
990 ft^2

Views
North East South



D1044

Bedrooms

Two

Baths

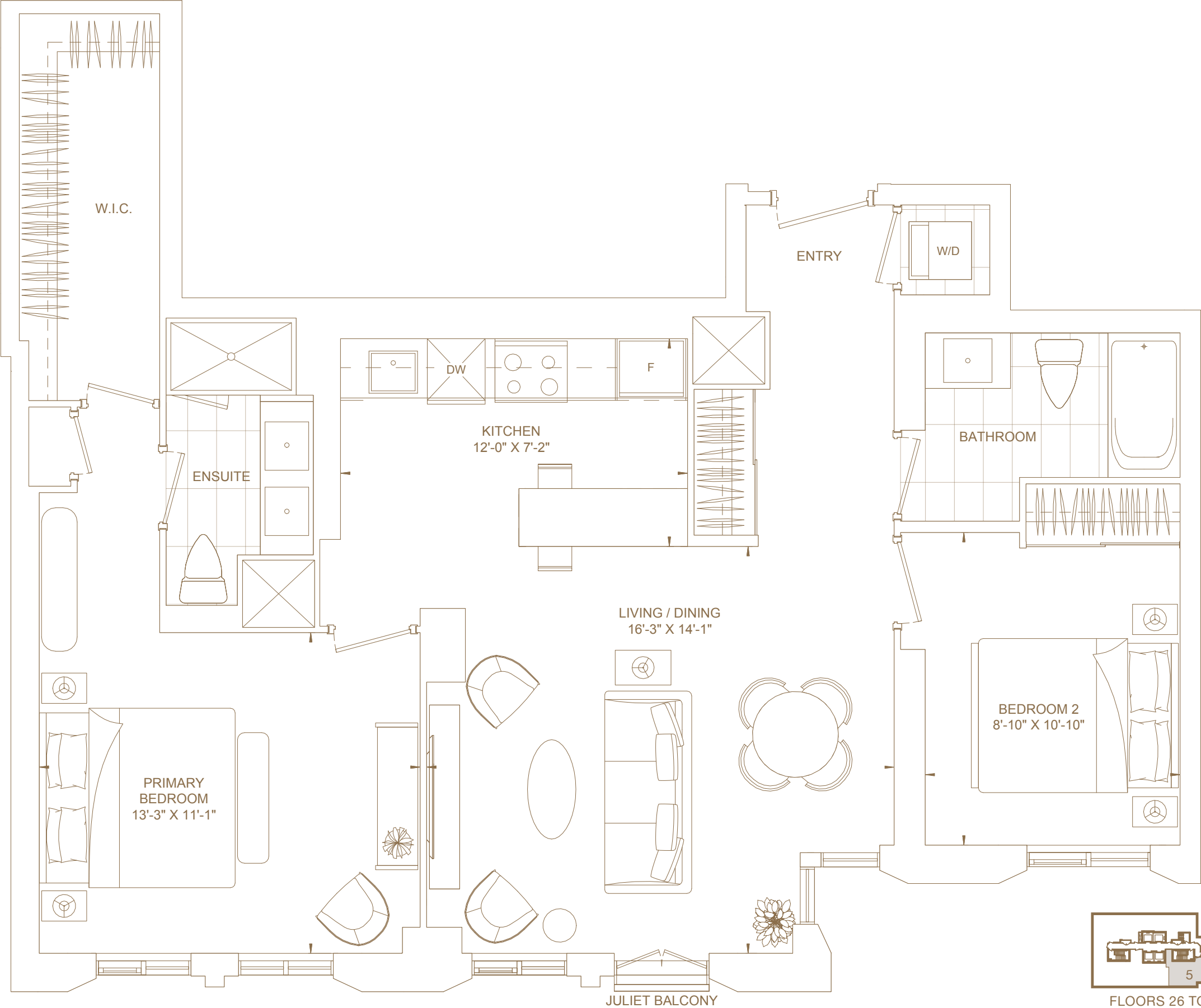
Two

Total Living Area

1,044 *sf*²

Views

South



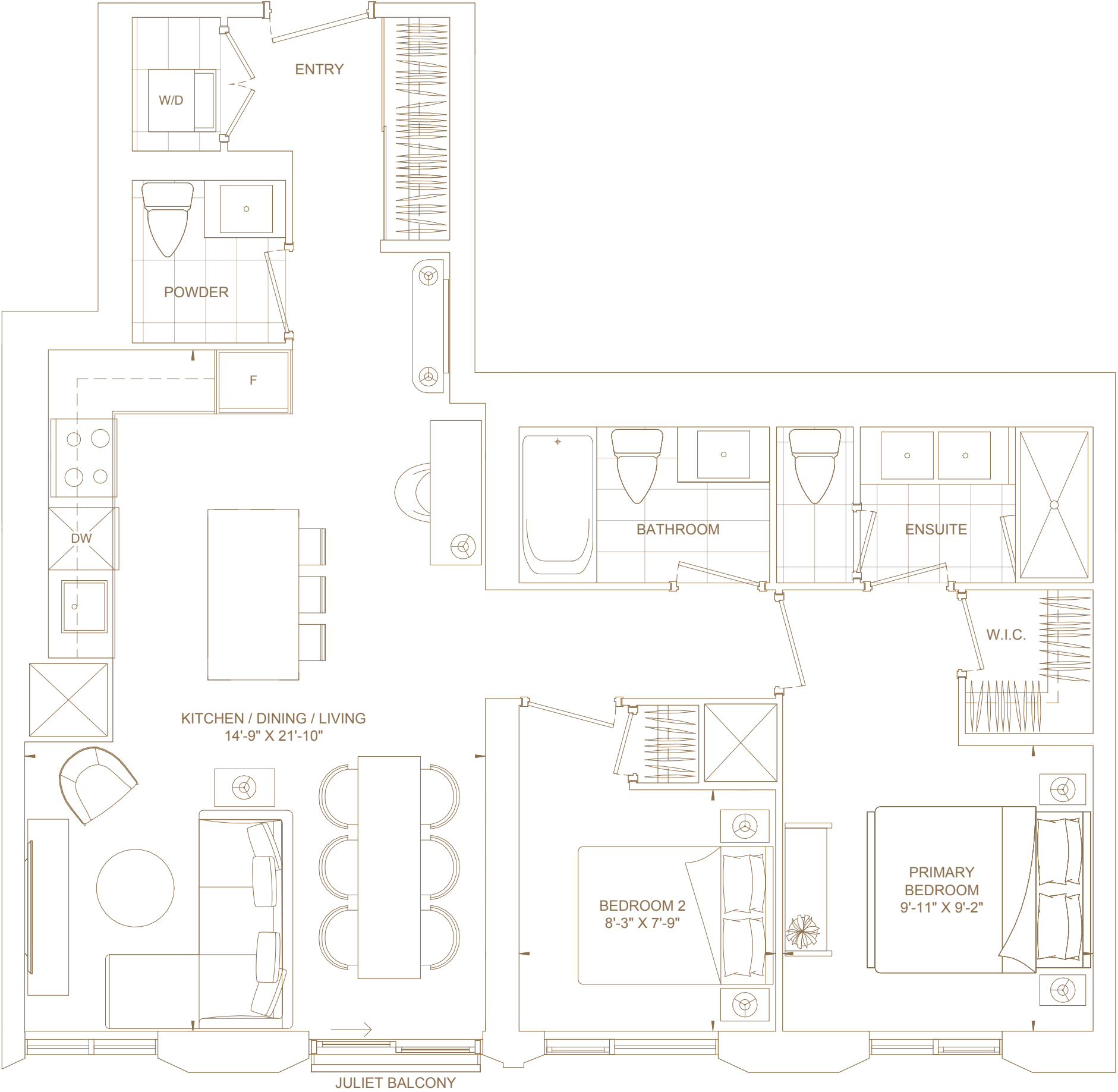
D949

Bedrooms
Two

Baths
Three

Total Living Area
949 *ft*²

Views
South



D957

Bedrooms

Two

Baths

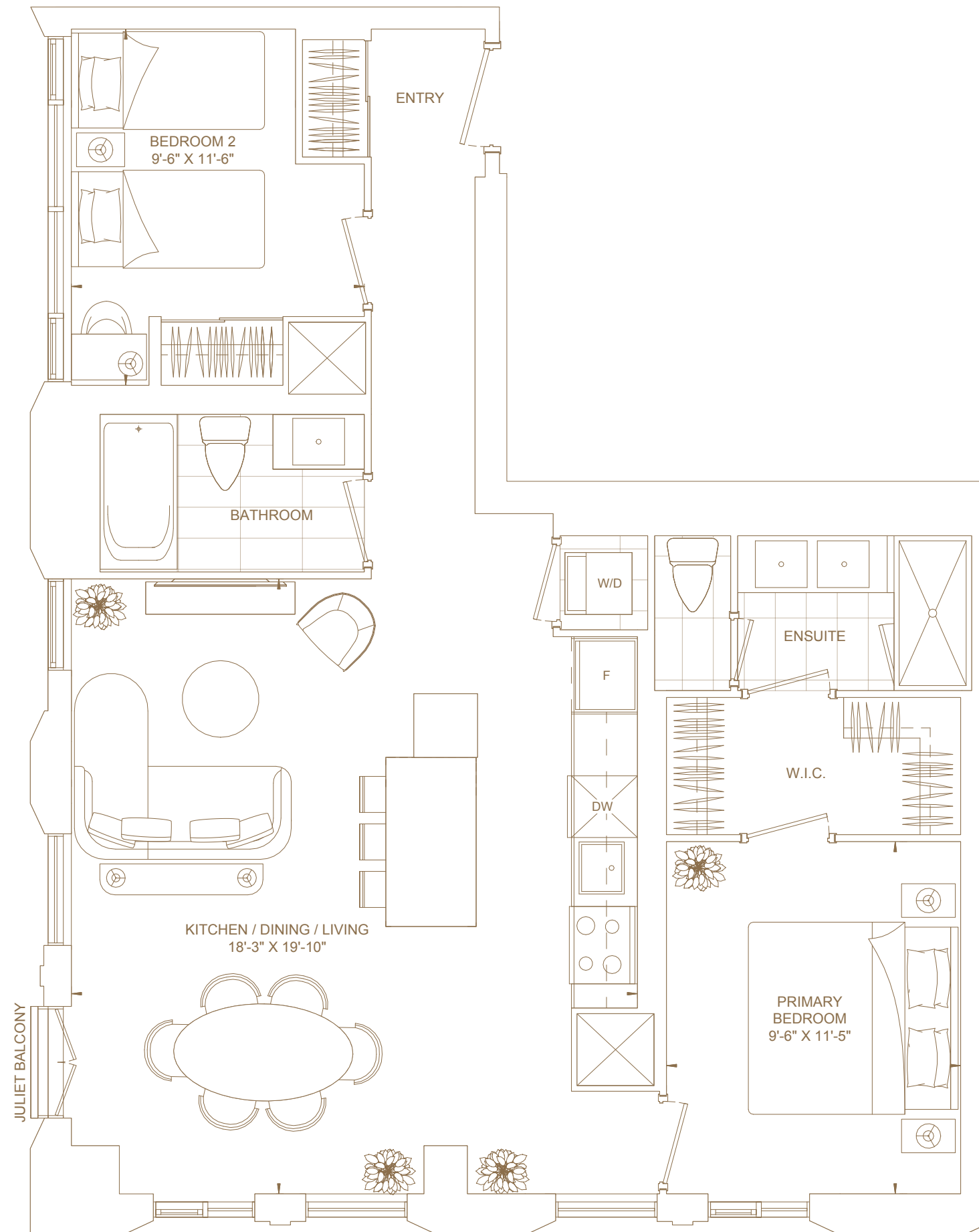
Two

Total Living Area

957 ft²

Views

South West



D712

Bedrooms

Two

Baths

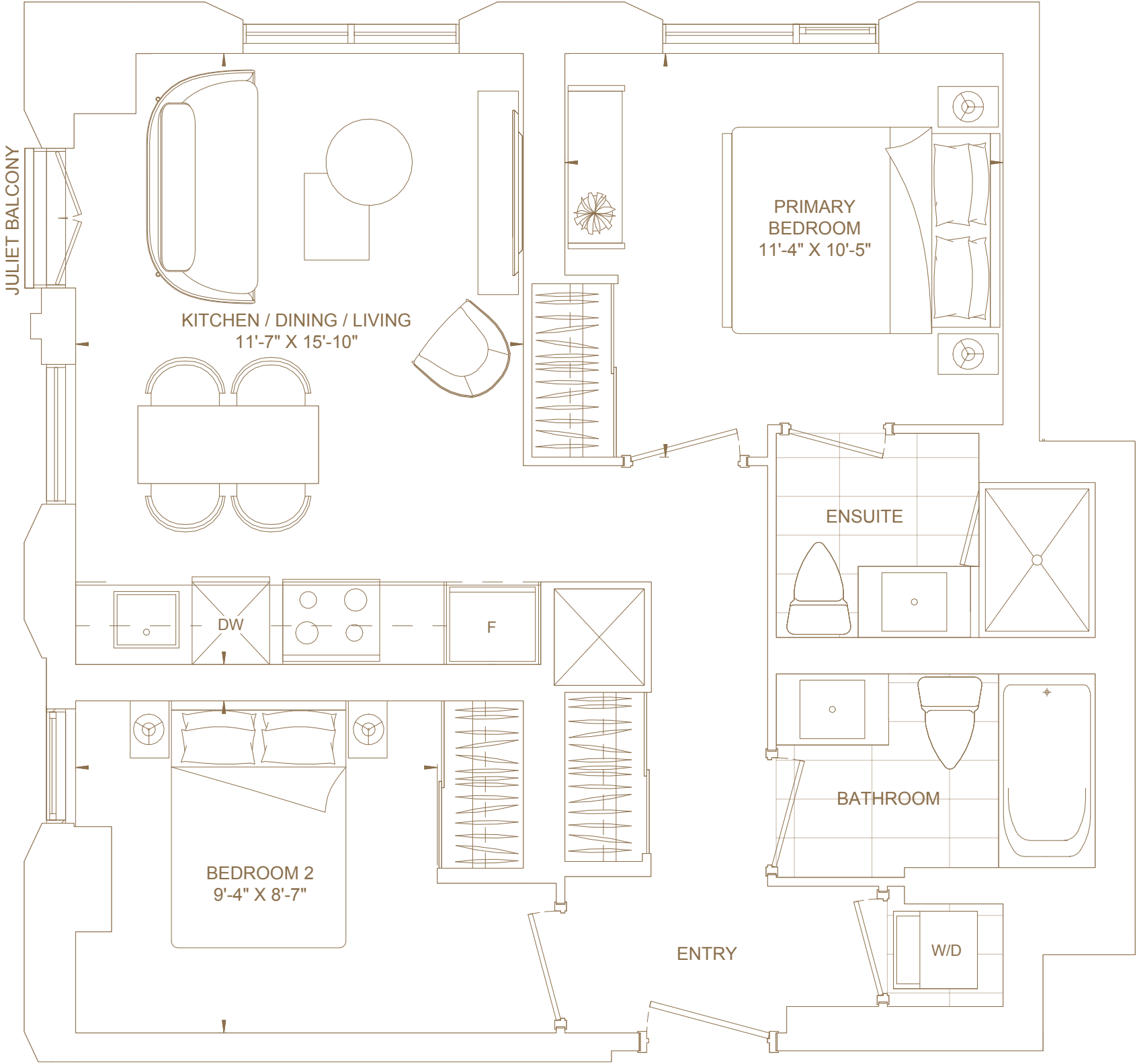
Two

Total Living Area

712ft²

Views

North West



FLOORS 26 TO 30
& 35 TO 36



D690

Bedrooms
Two

Baths
Two

Total Living Area
690 ft²

Views
North

