

36'

B



## THE PARKLANDS

Loft

ELEV B • 3242 SQ. FT.



36'

A



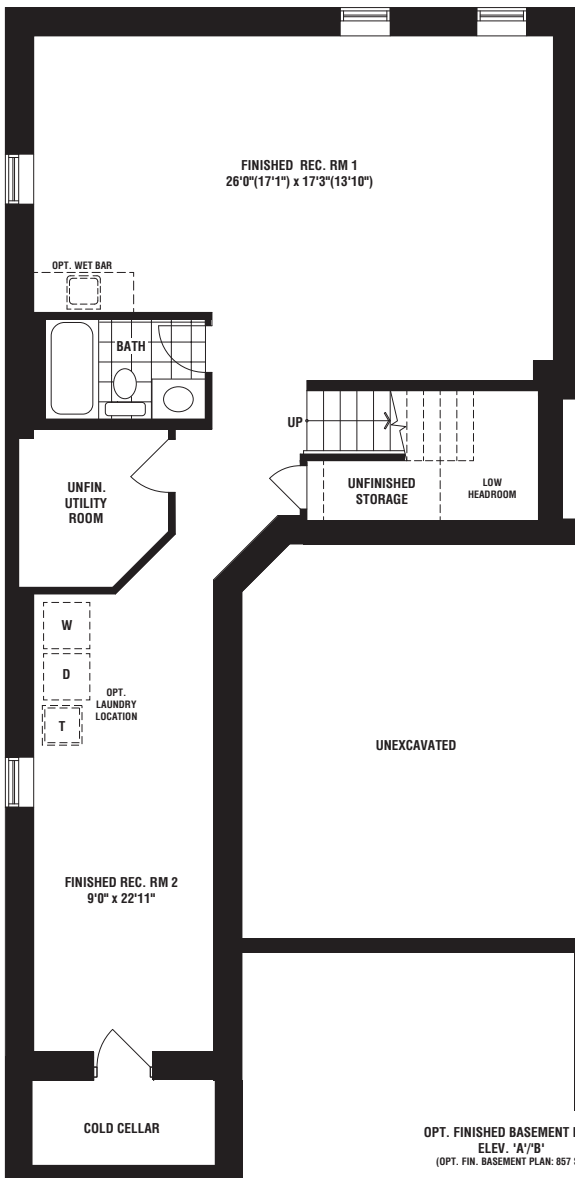
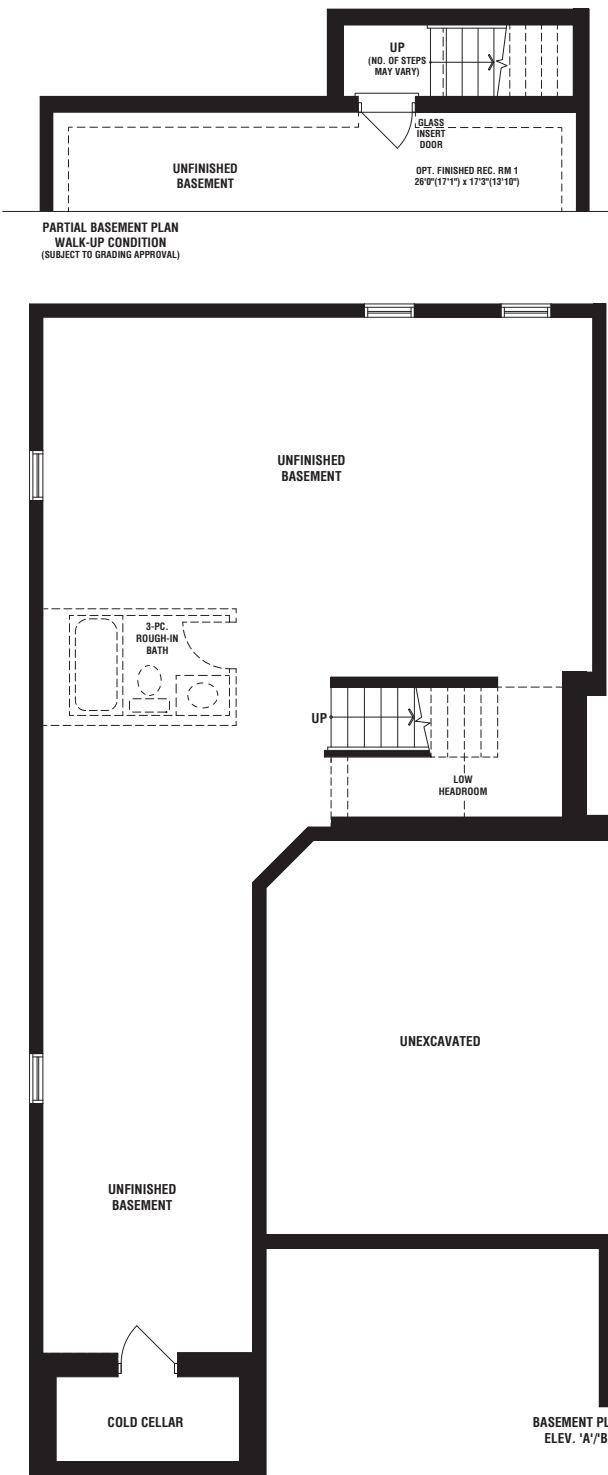
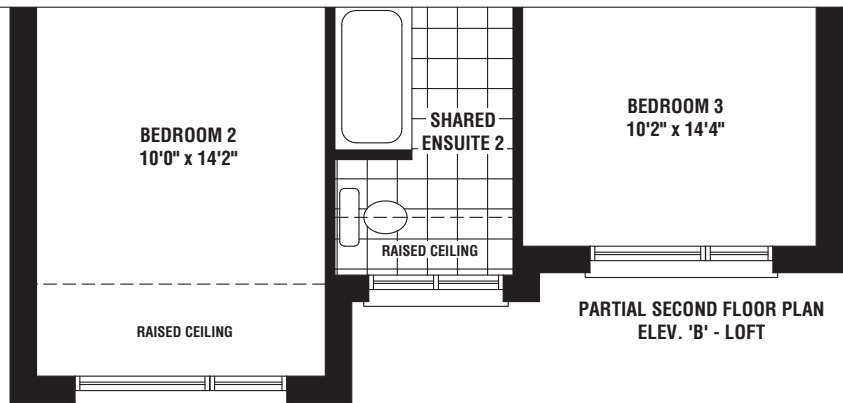
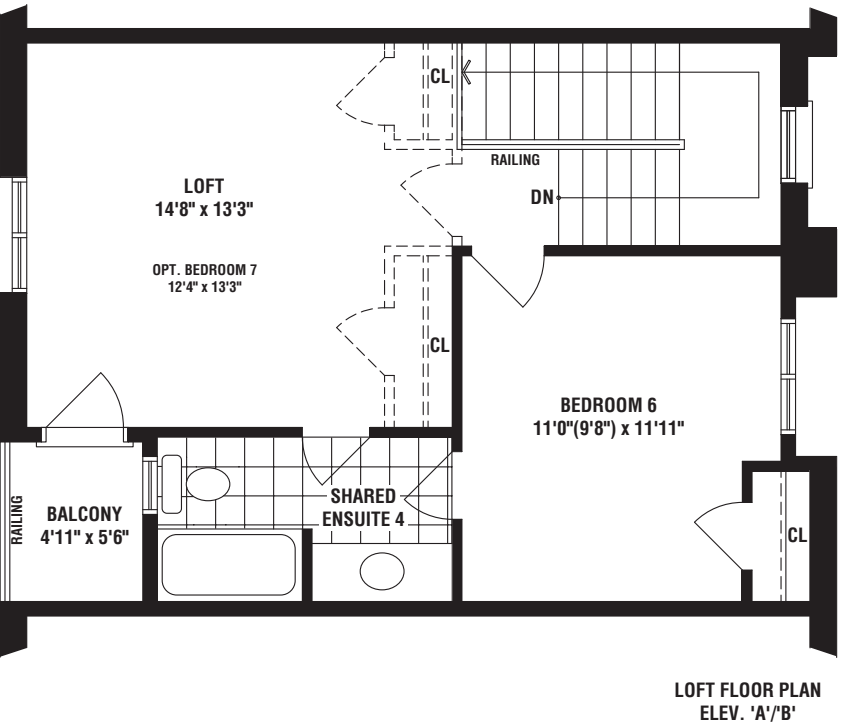
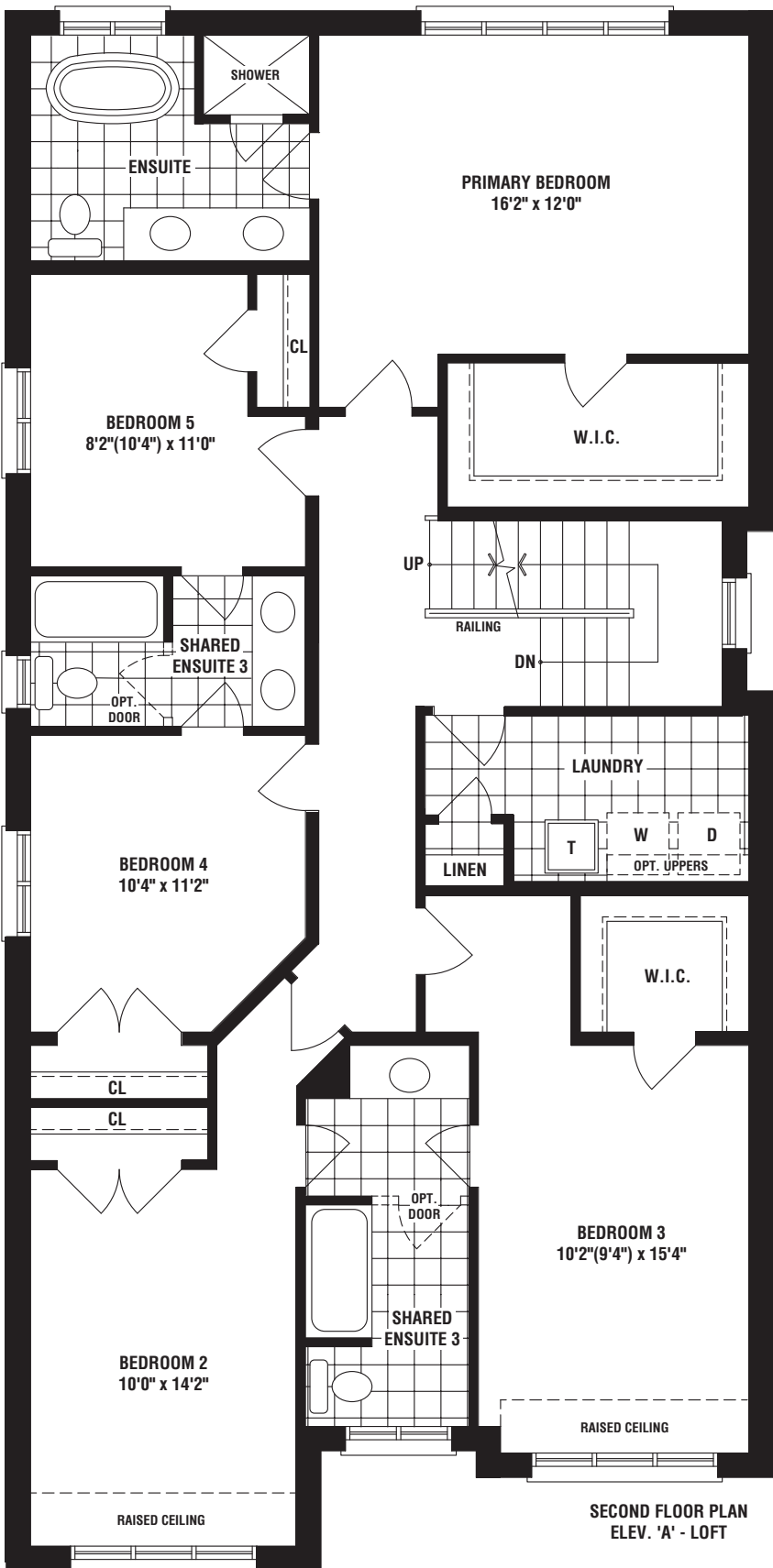
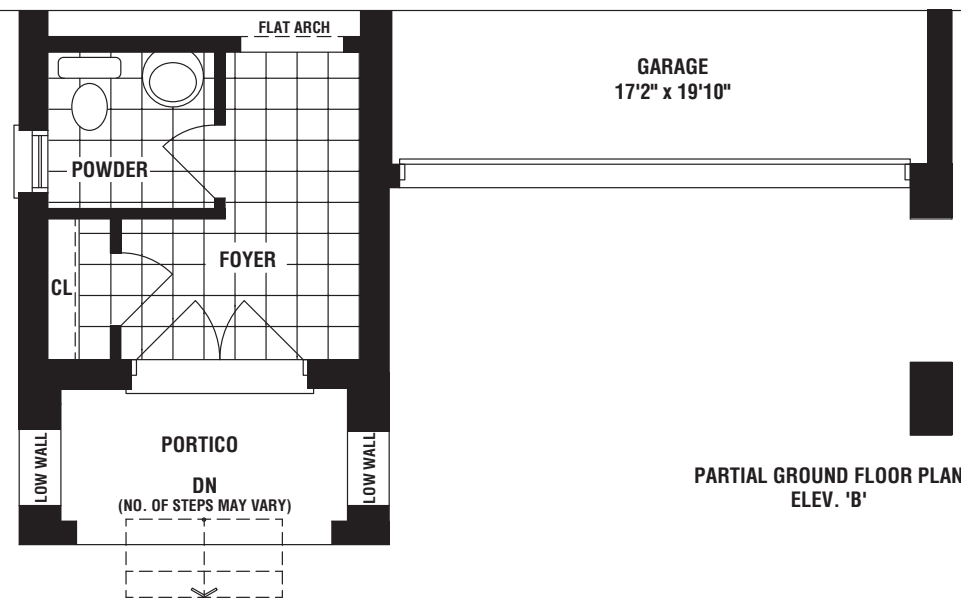
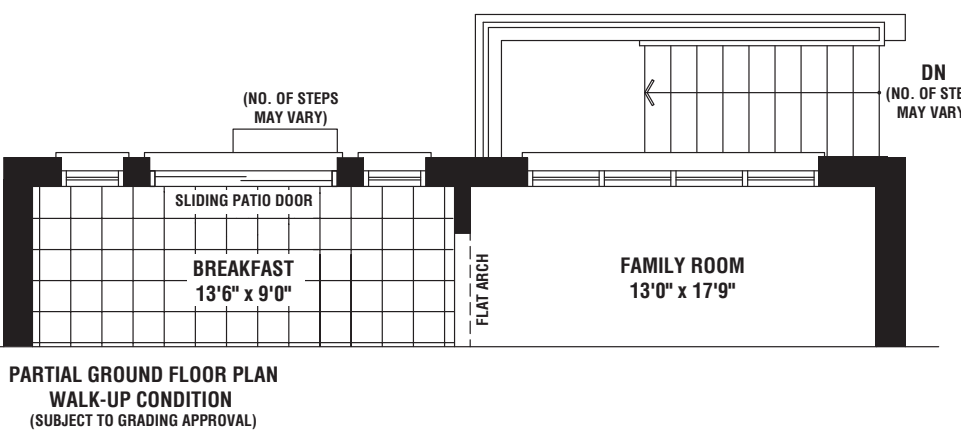
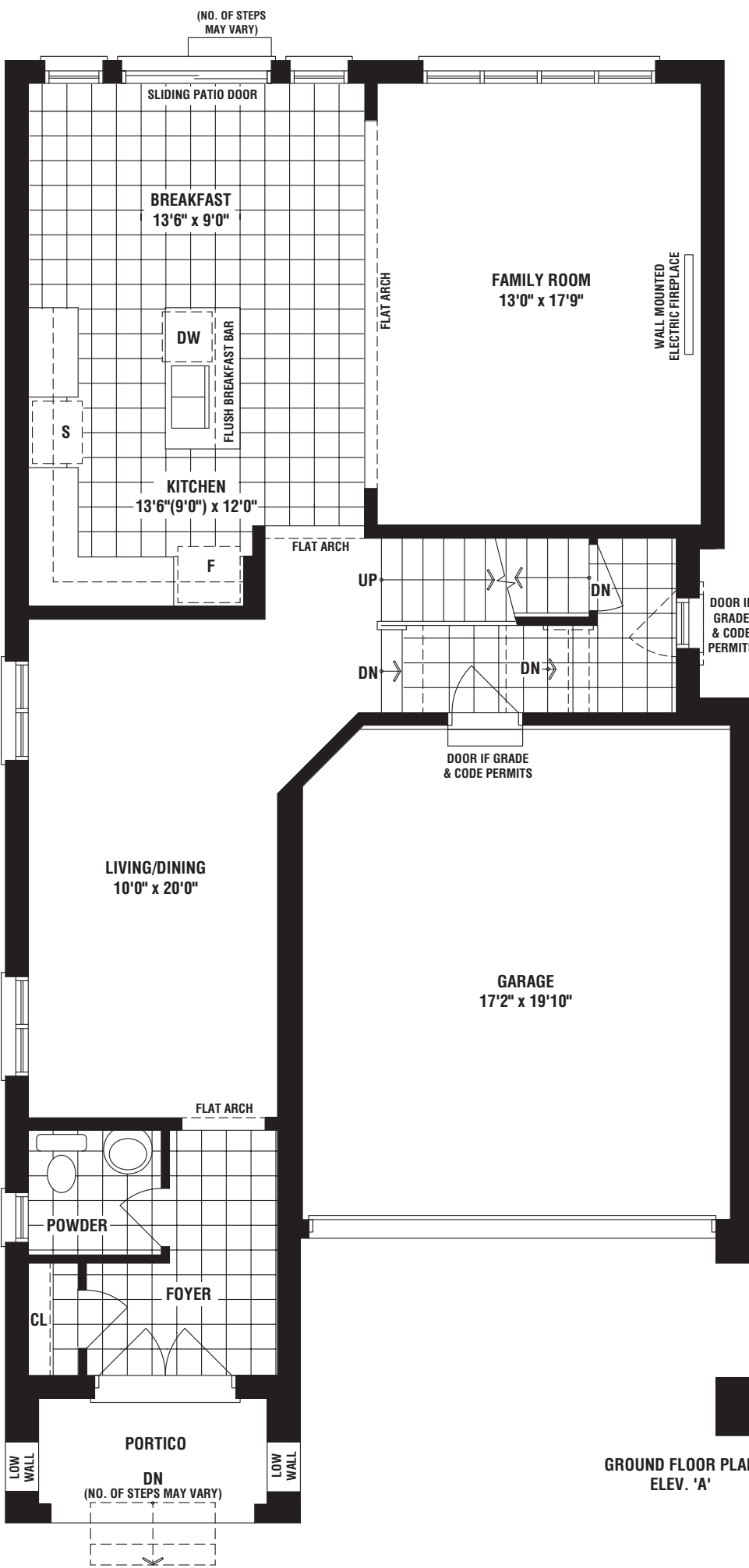
## THE PARKLANDS

Loft

ELEV A • 3246 SQ. FT.









36'

B



## THE PARKLANDS

ELEV B • 2702 SQ. FT.



36'

A



## THE PARKLANDS

ELEV A • 2706 SQ. FT.

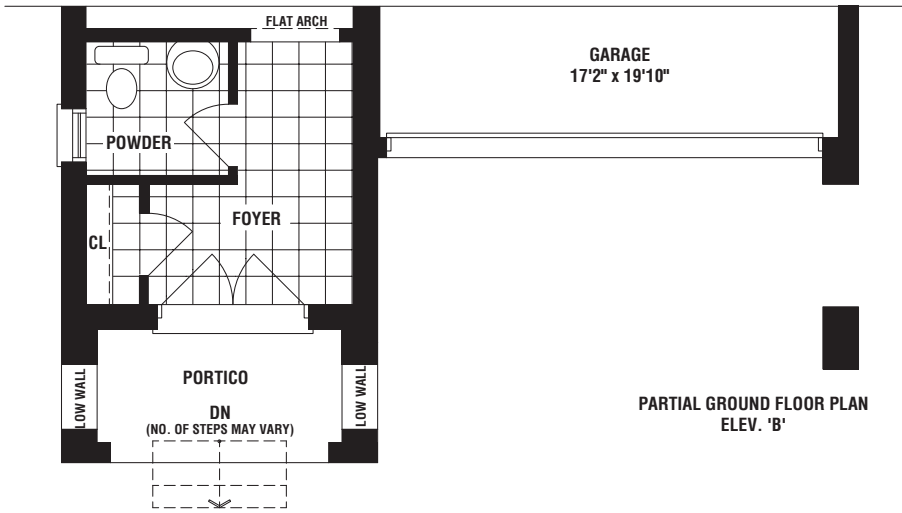
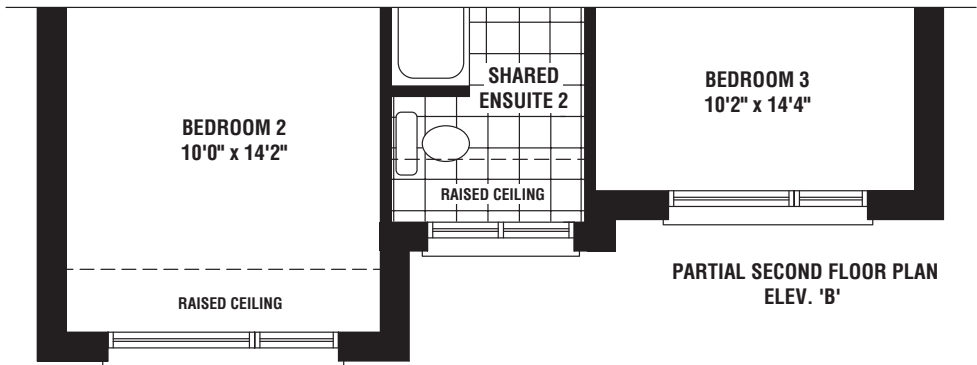
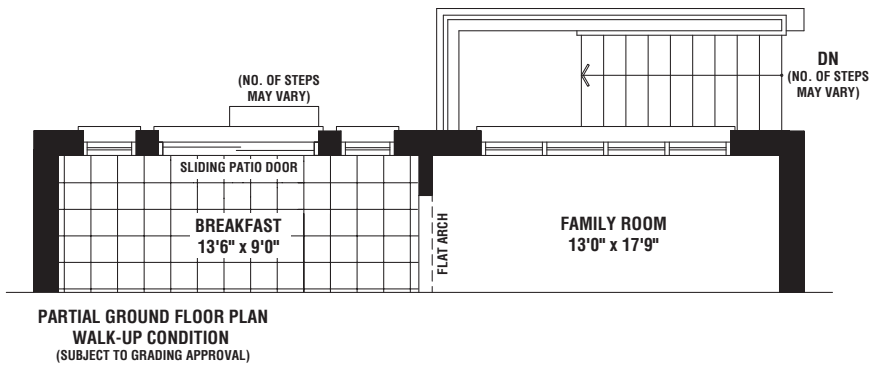
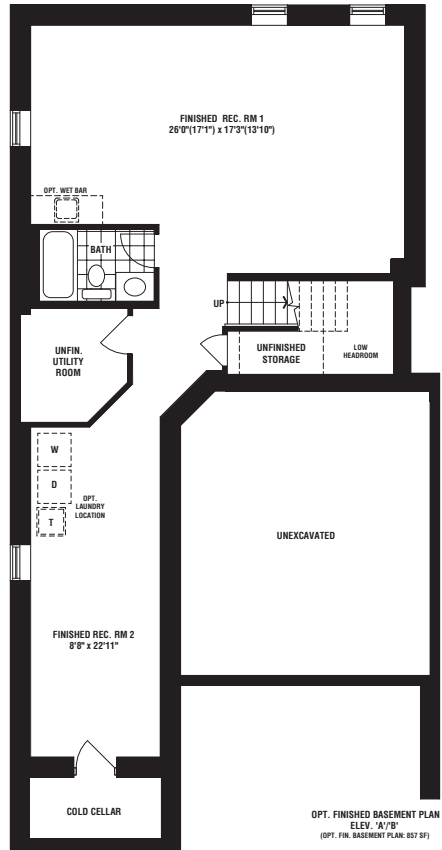
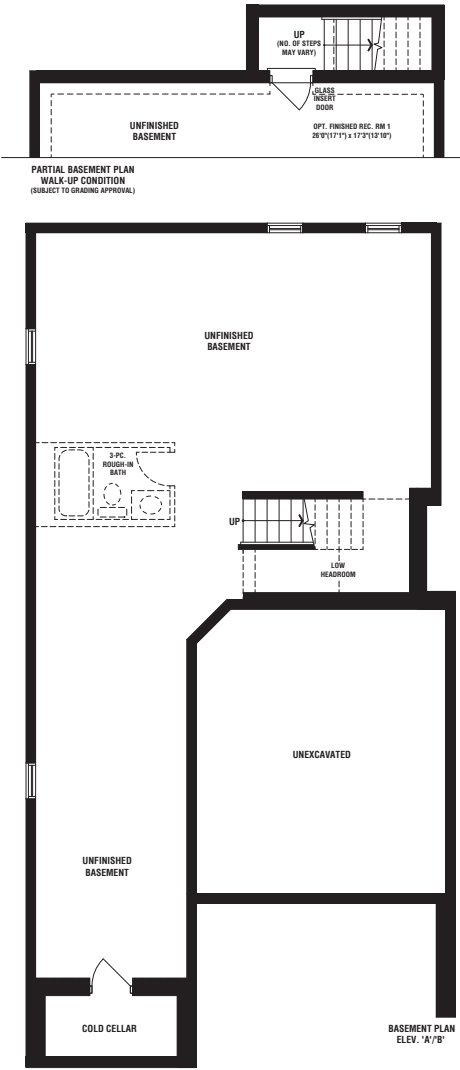
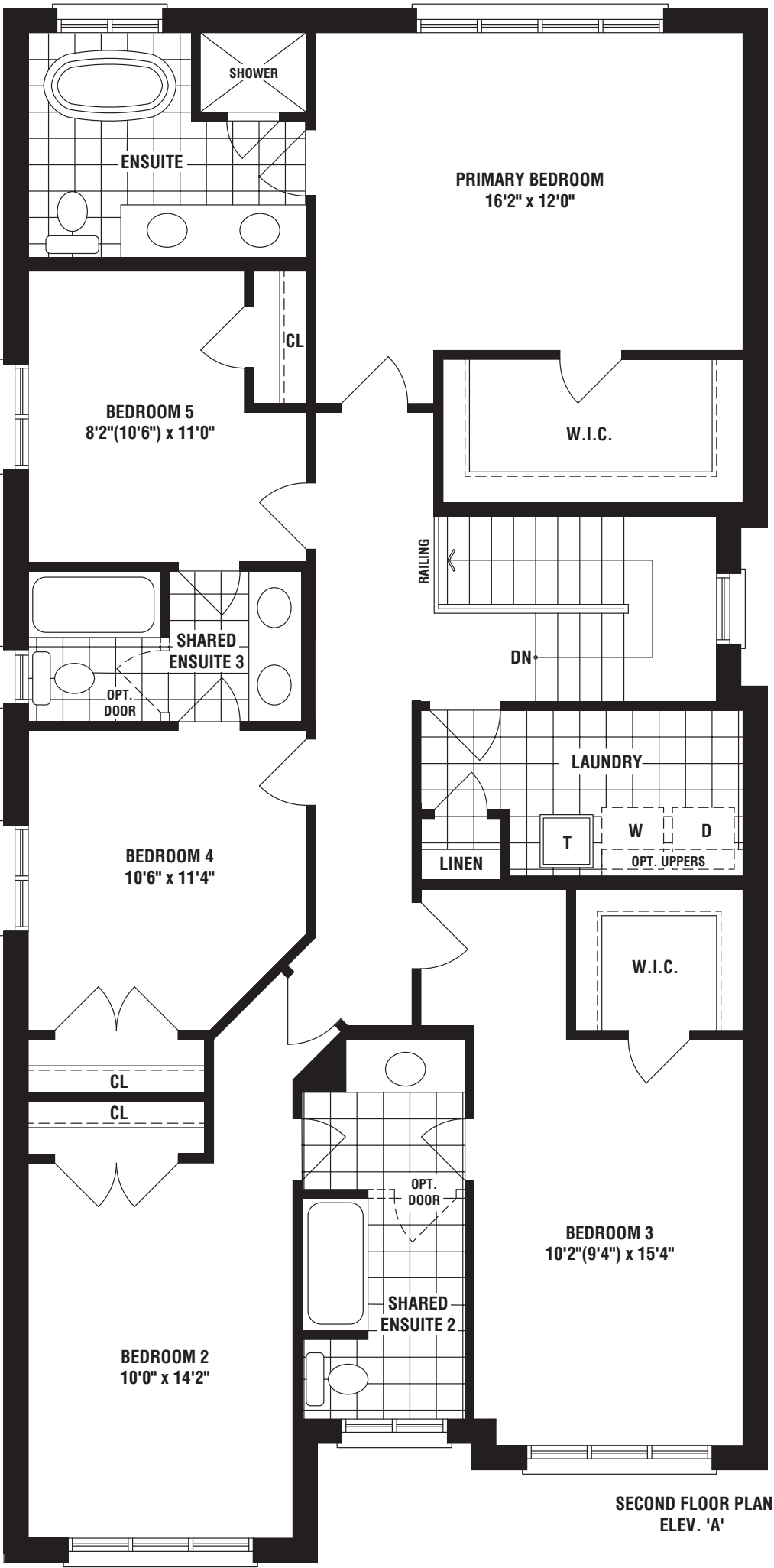
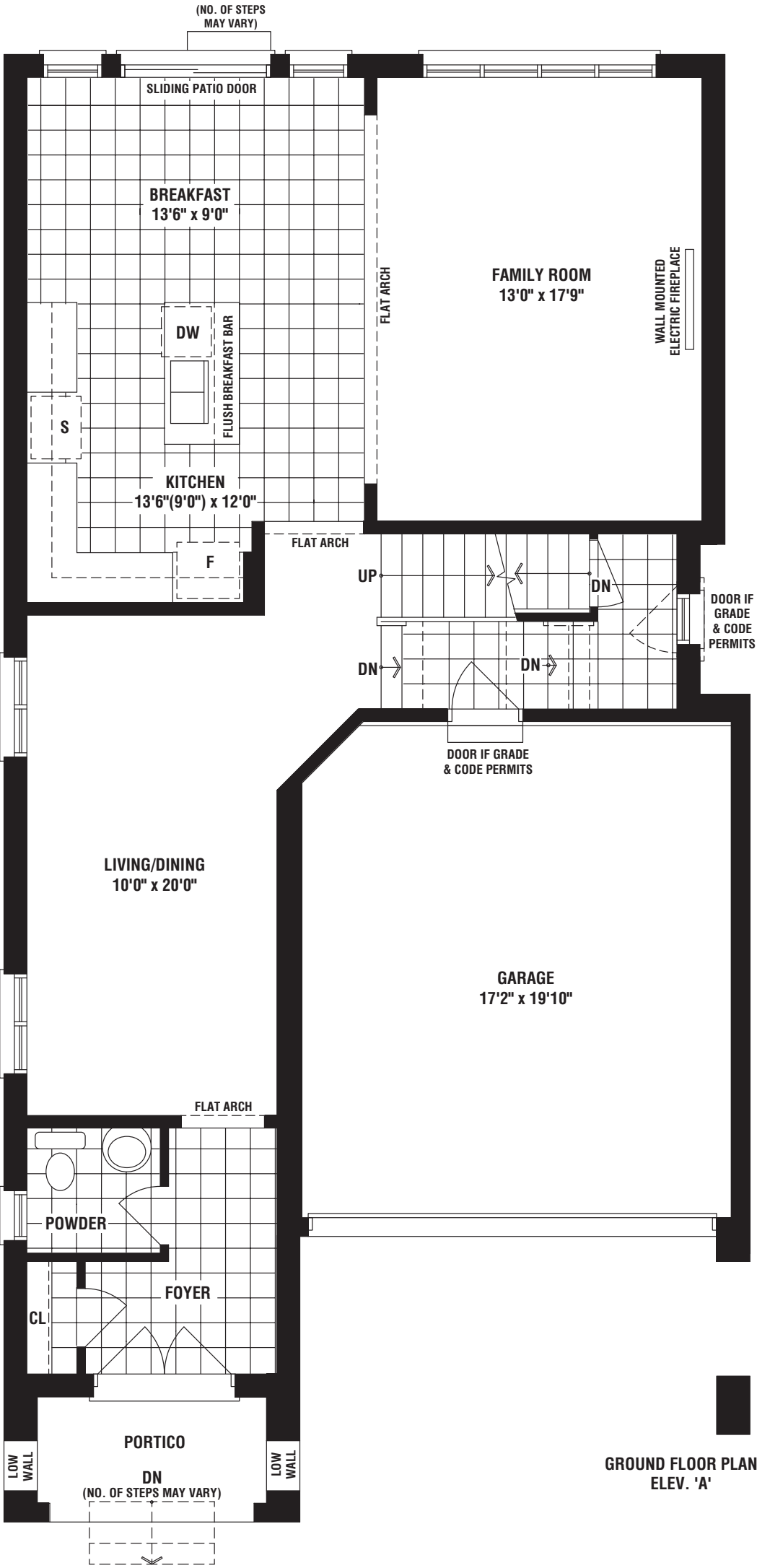




# THE PARKLANDS

ELEV A • 2706 SQ. FT. | ELEV B • 2702 SQ. FT.

36'





36'

B



## THE MEADOWLANDS

ELEV B • 2558 SQ. FT.



36'

A



## THE MEADOWLANDS

ELEV A • 2557 SQ. FT.

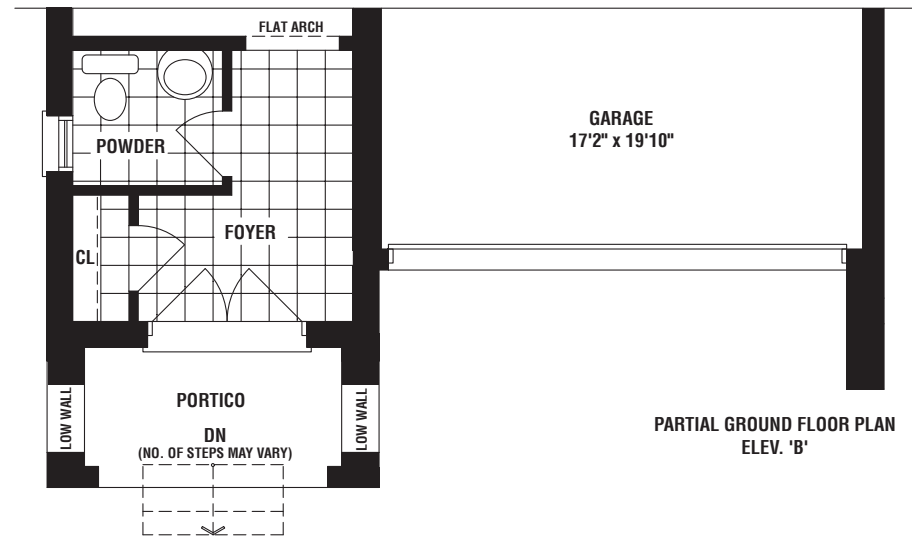
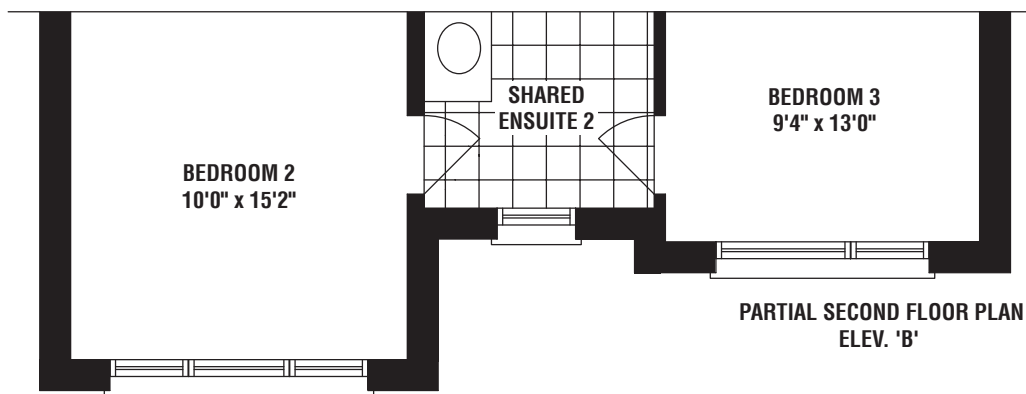
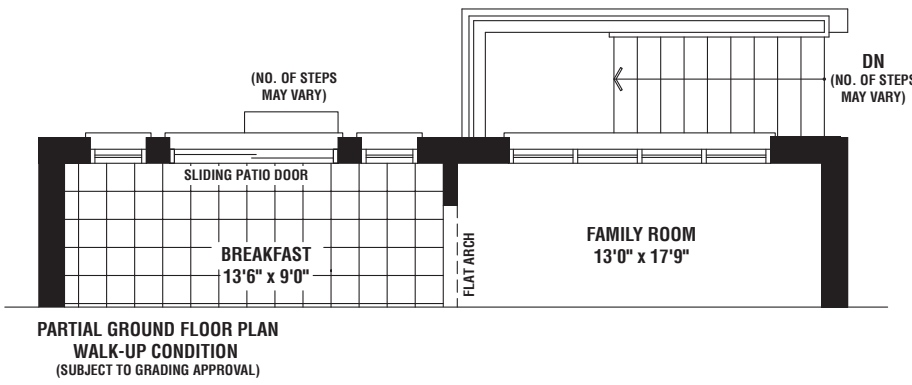
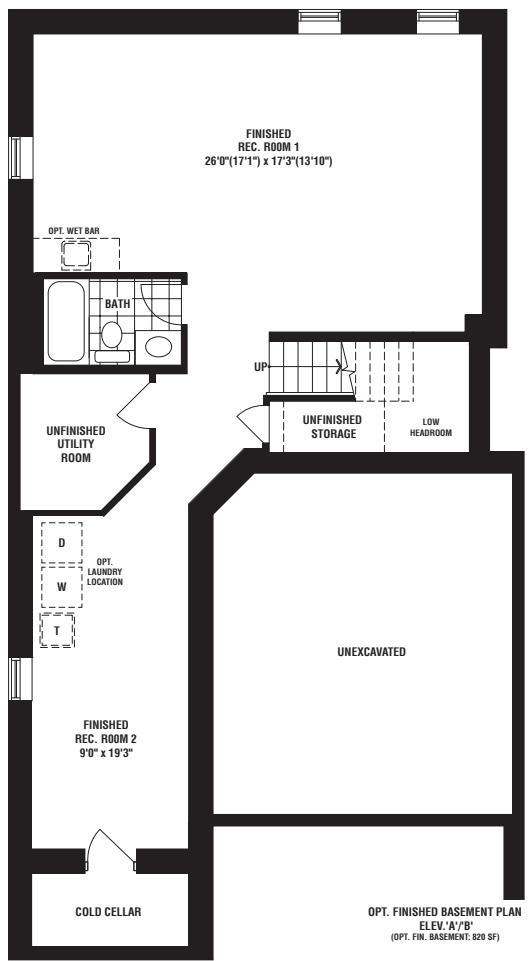
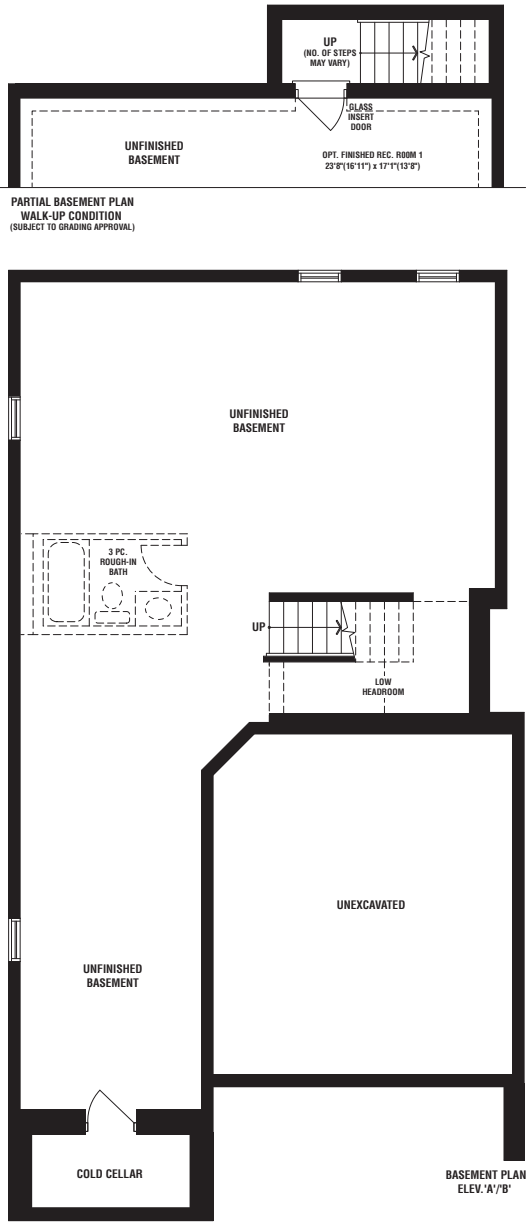
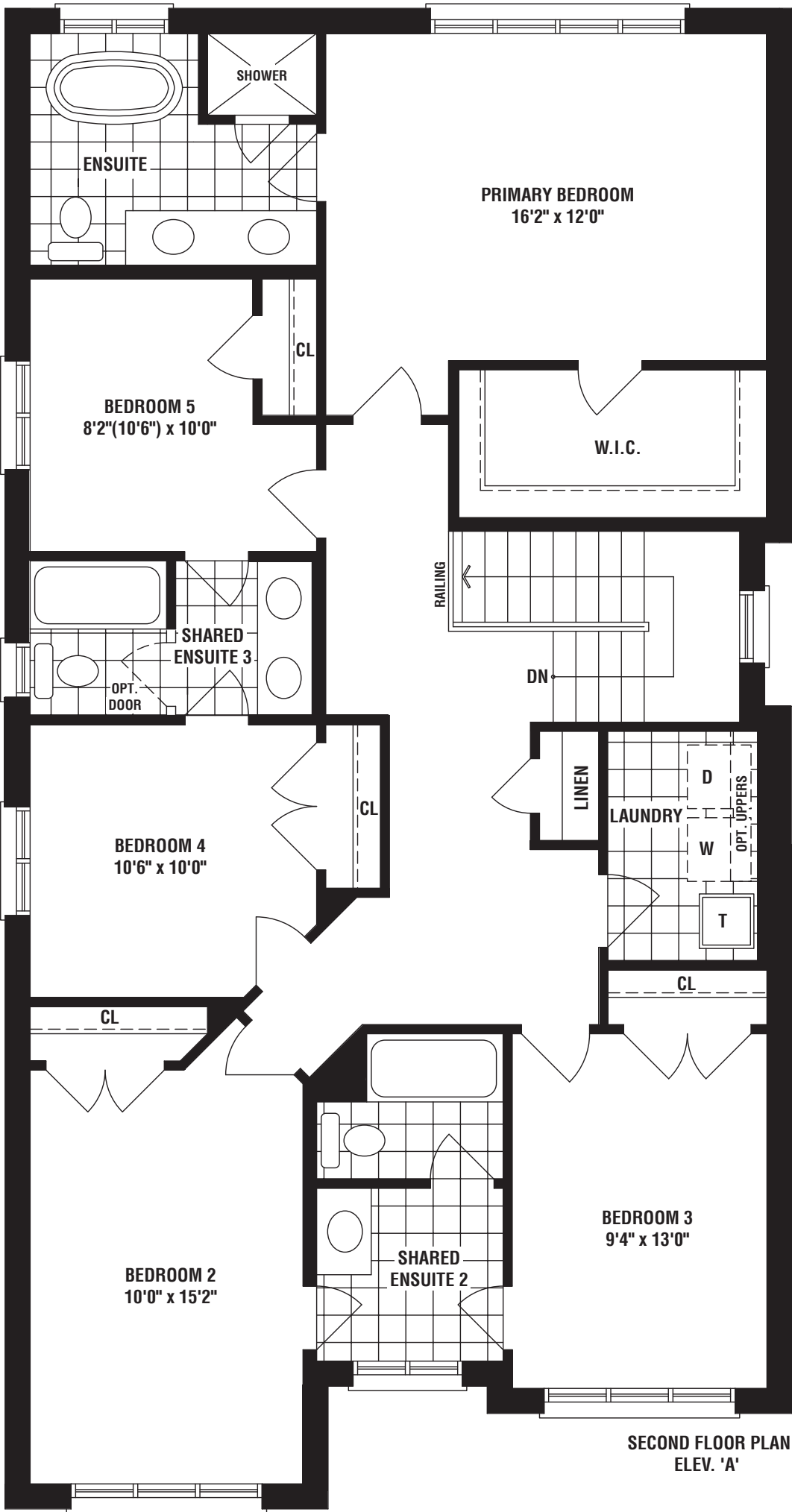
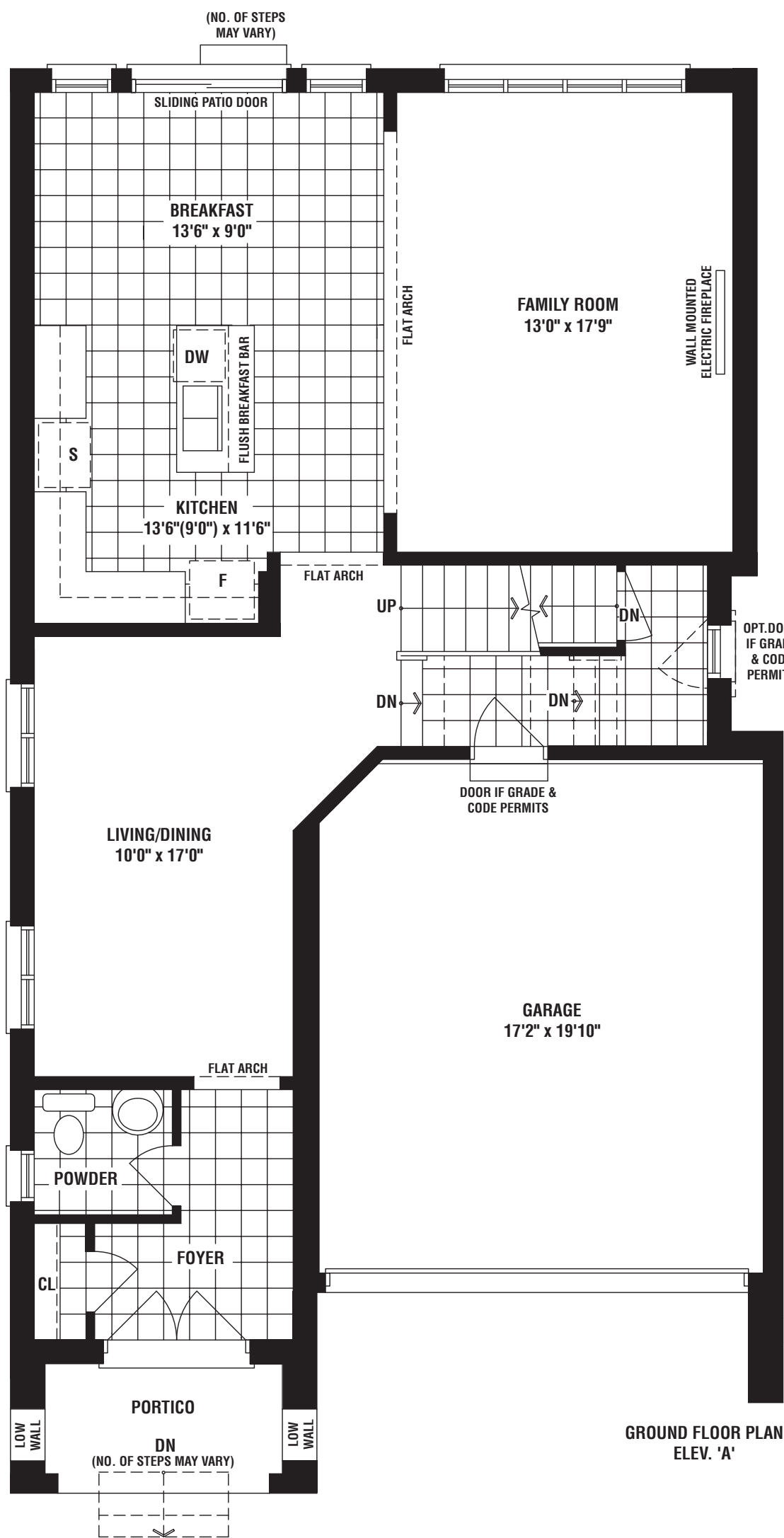




# THE MEADOWLANDS

ELEV A • 2557 SQ. FT. | ELEV B • 2558 SQ. FT.

36'





36'

B



## THE GRASSLANDS

ELEV B • 2551 SQ. FT.



36'

A



## THE GRASSLANDS

ELEV A • 2561 SQ. FT.

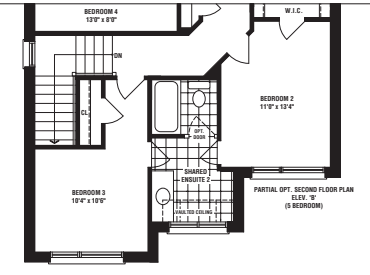
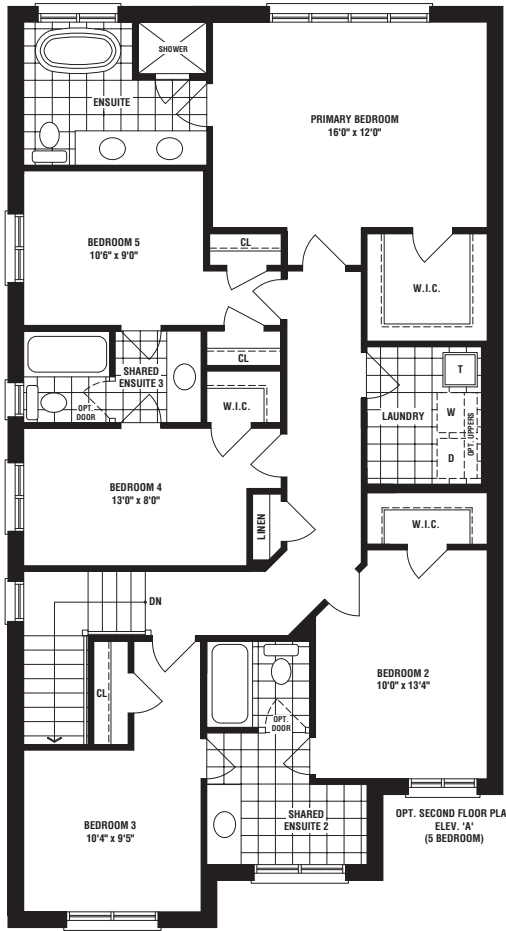
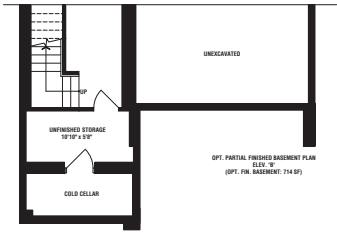
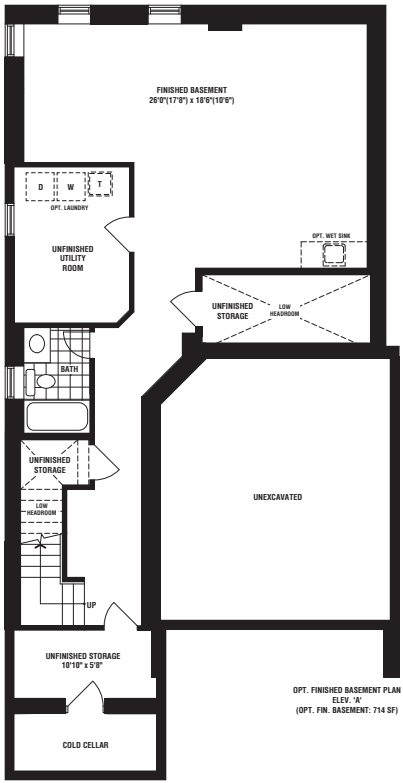
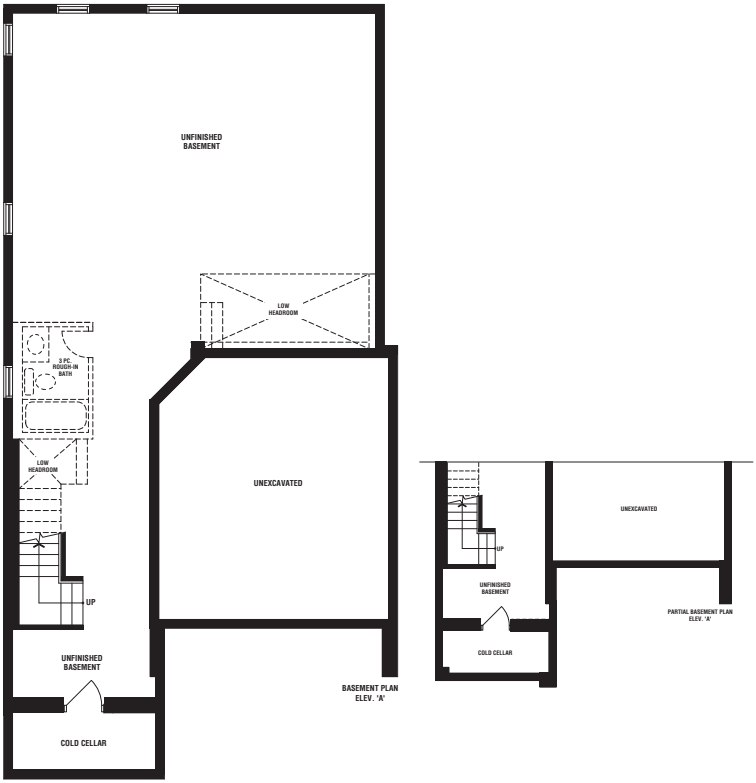
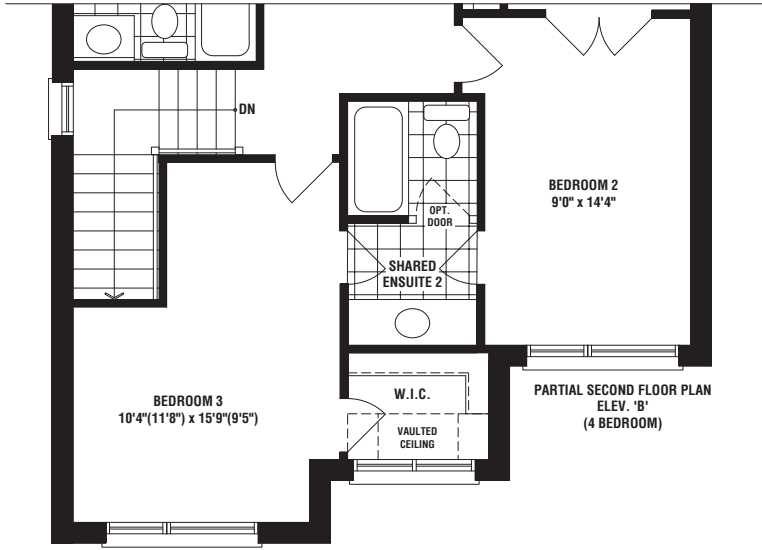
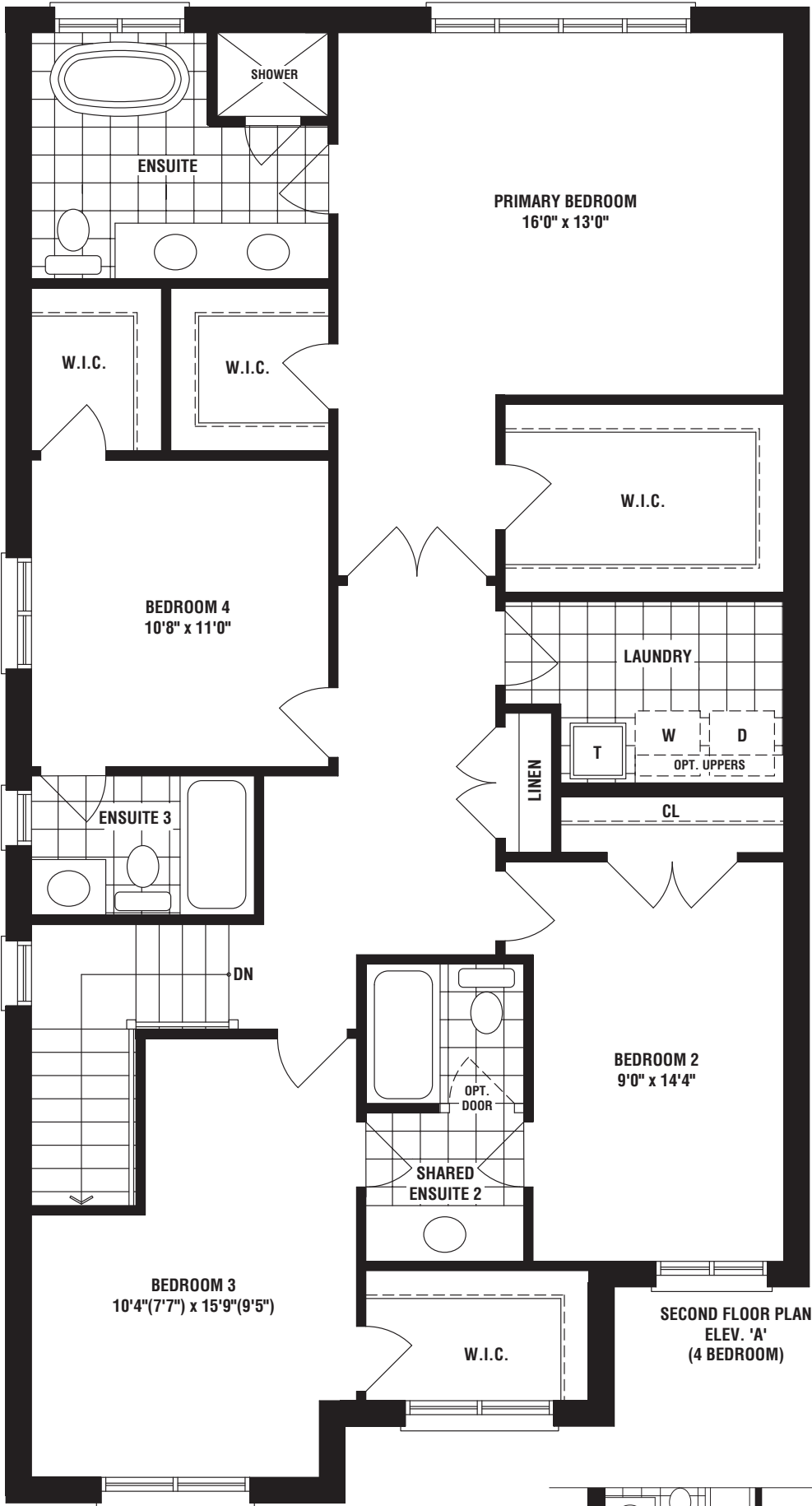
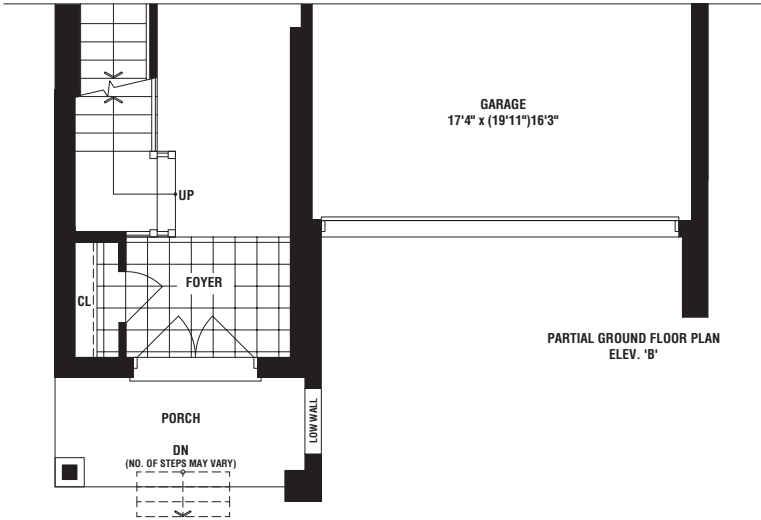
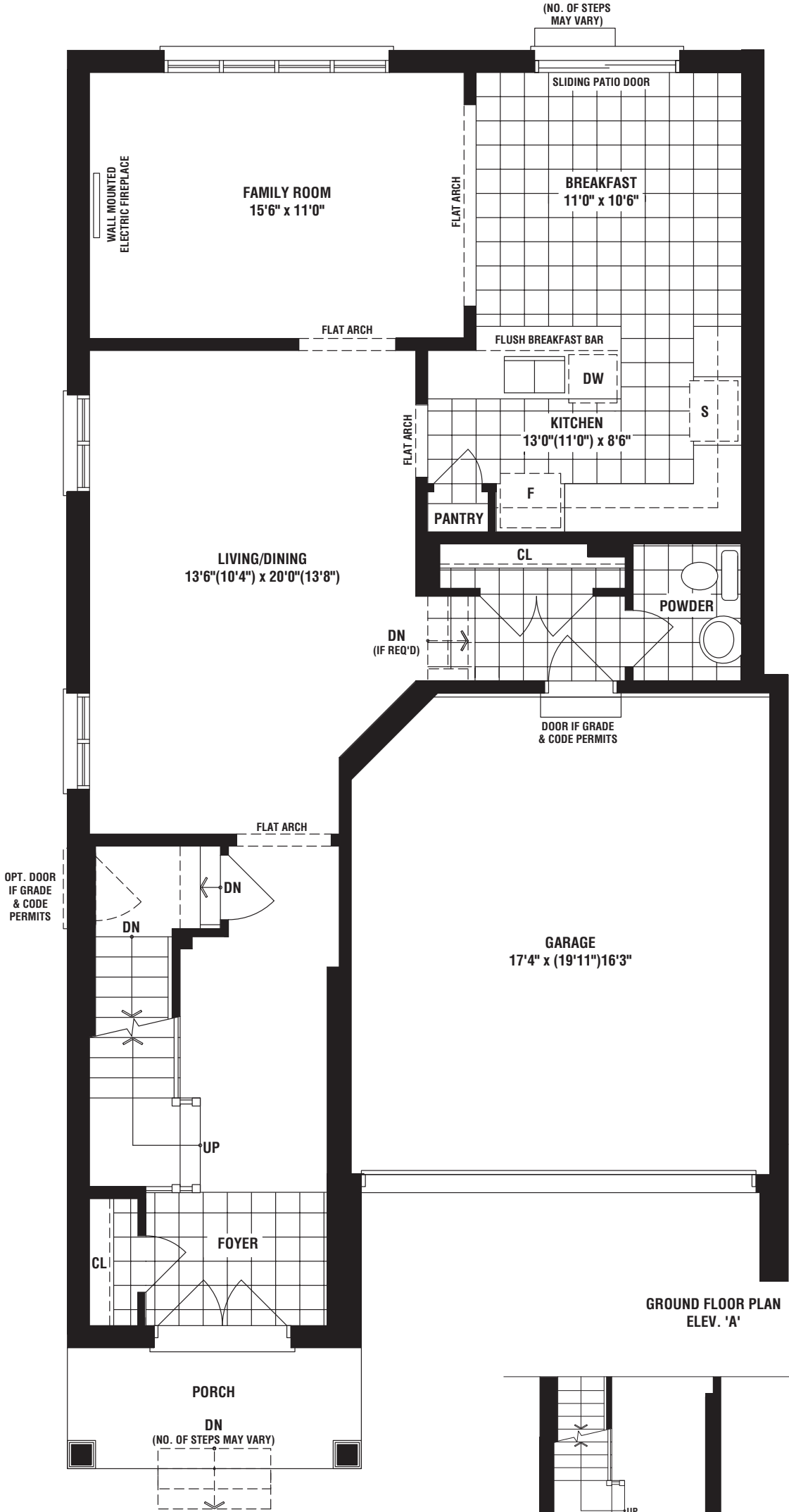




# THE GRASSLANDS

ELEV A • 2561 SQ. FT. | ELEV B • 2551 SQ. FT.

36'





THE HEDGELANDS

ELEV B • 2469 SQ. FT.  
ELEV C • 2404 SQ. FT.



36'



THE HEDGELANDS

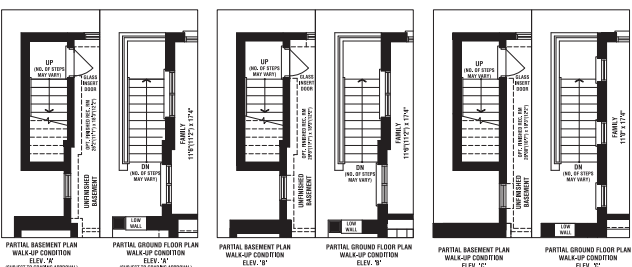
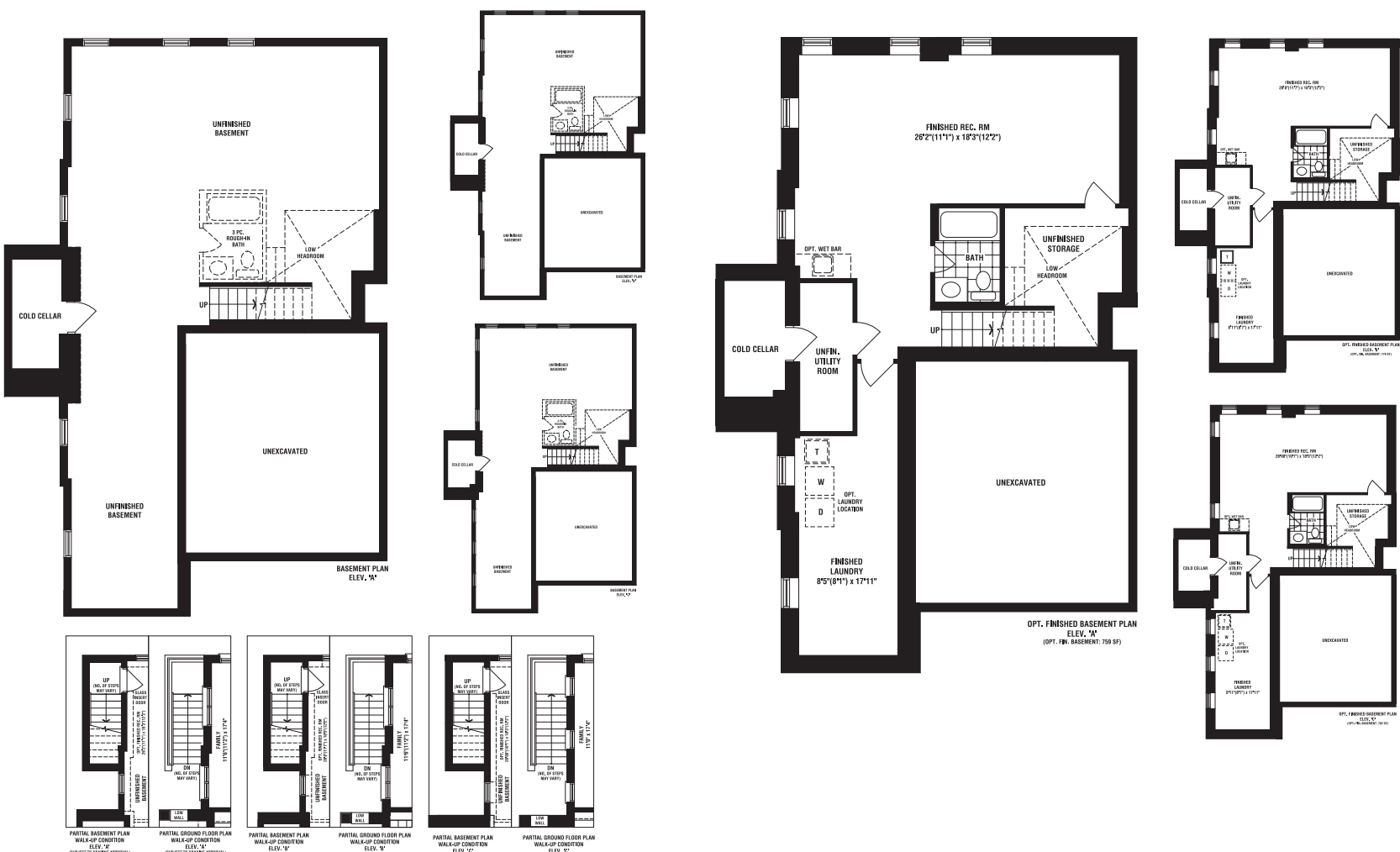
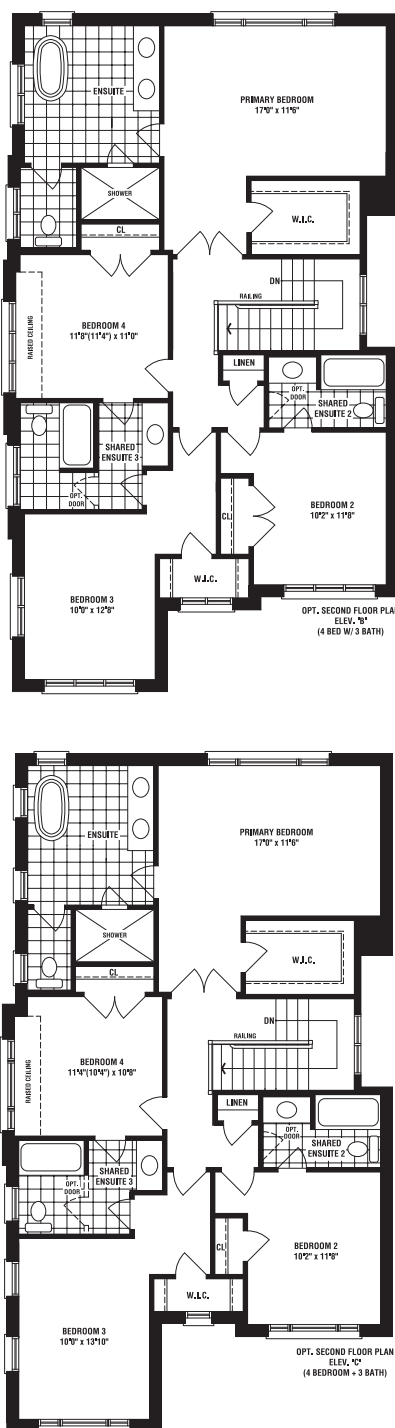
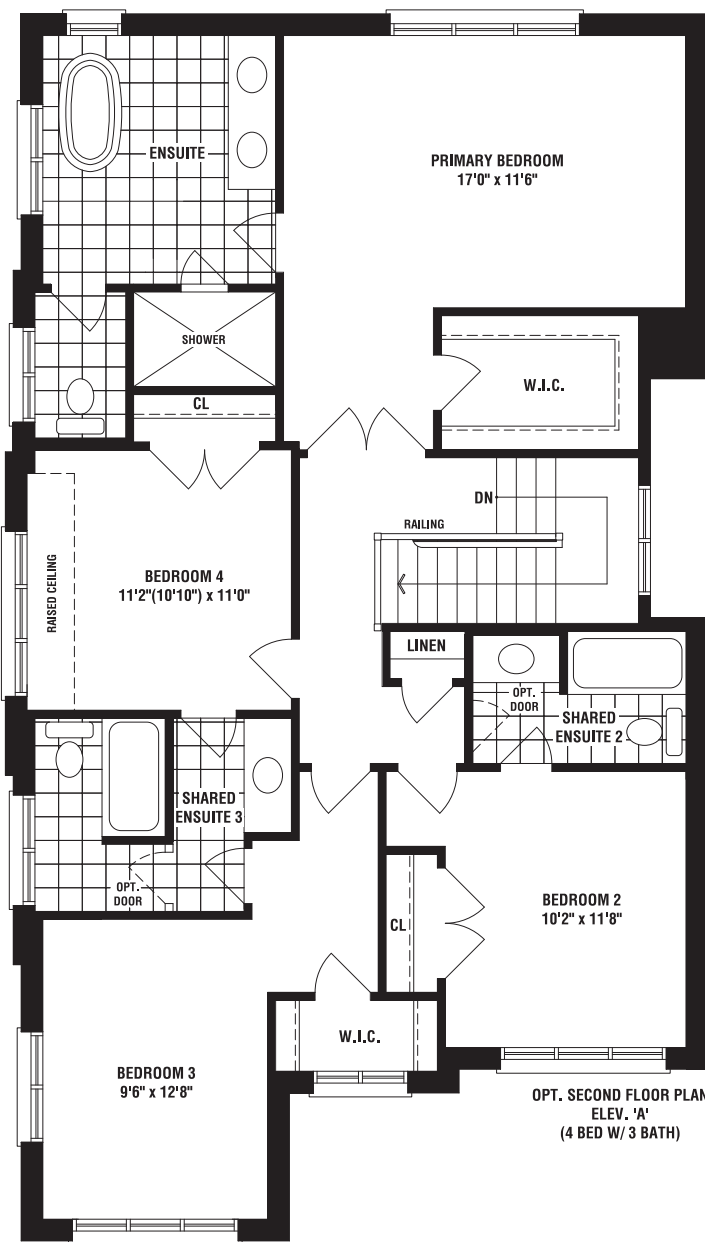
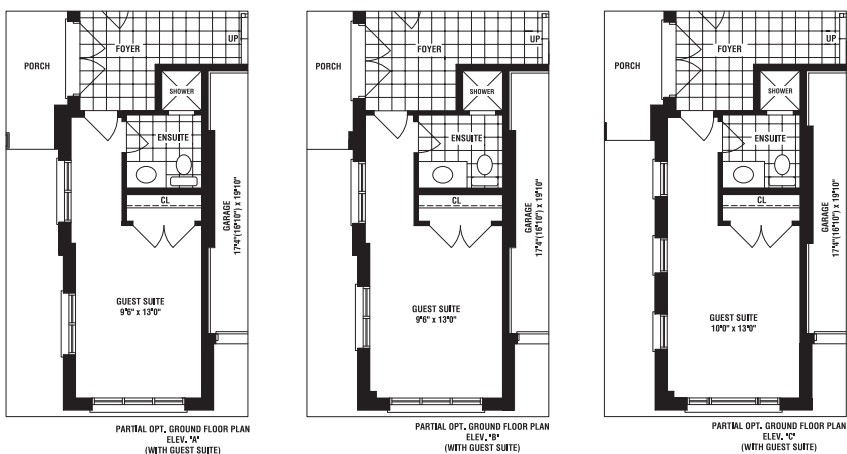
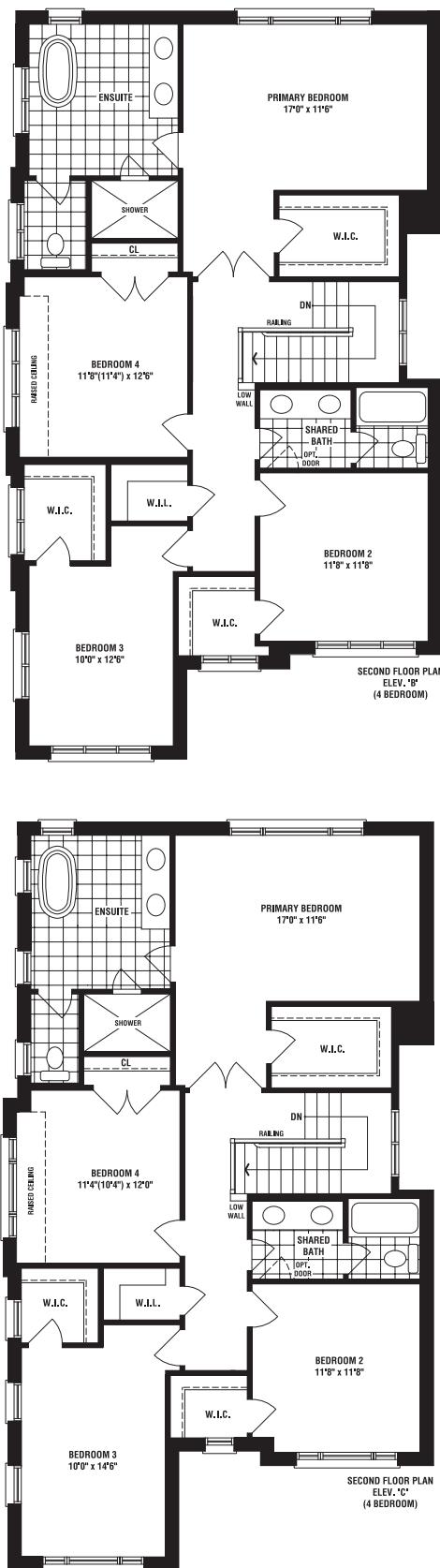
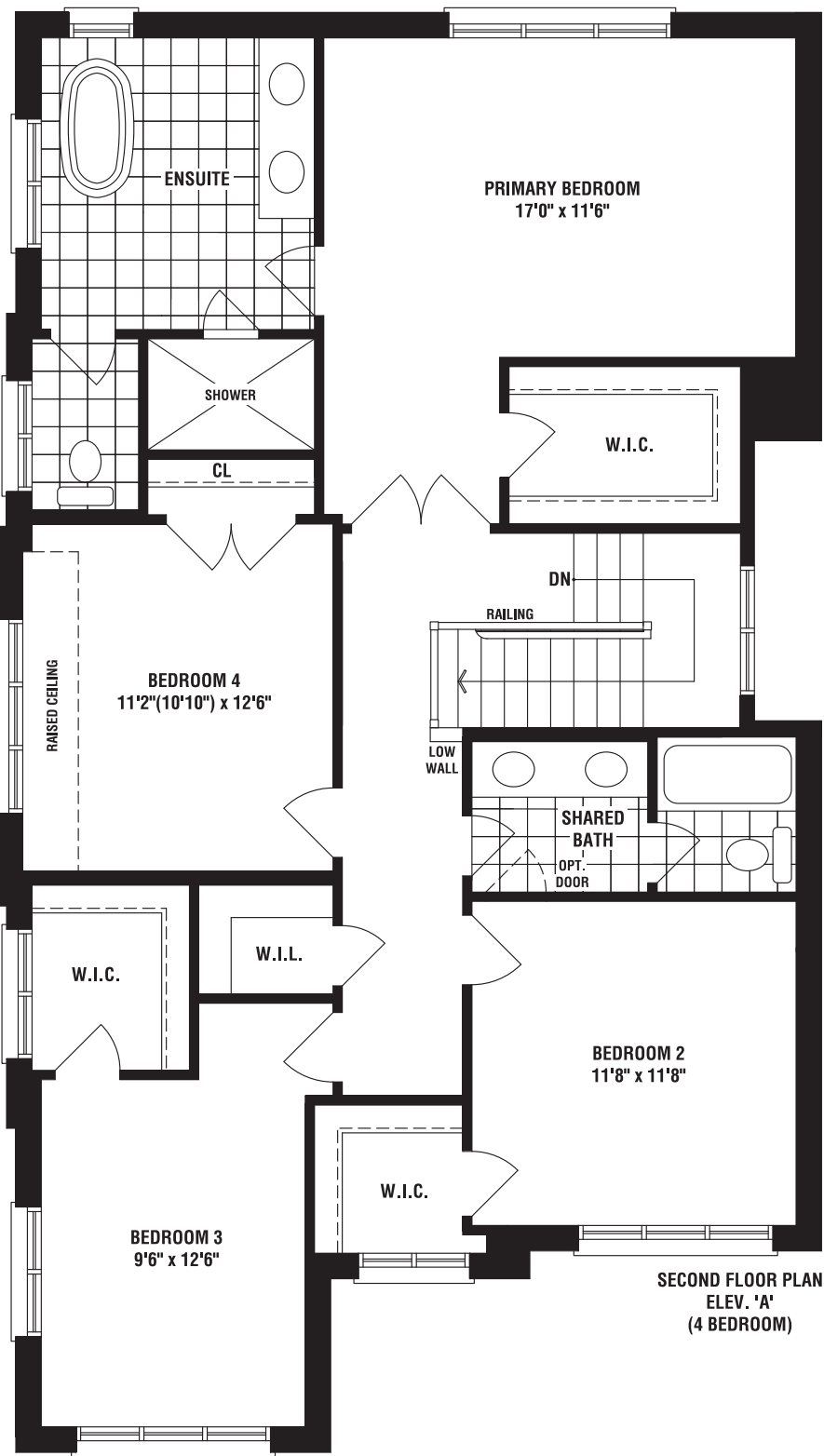
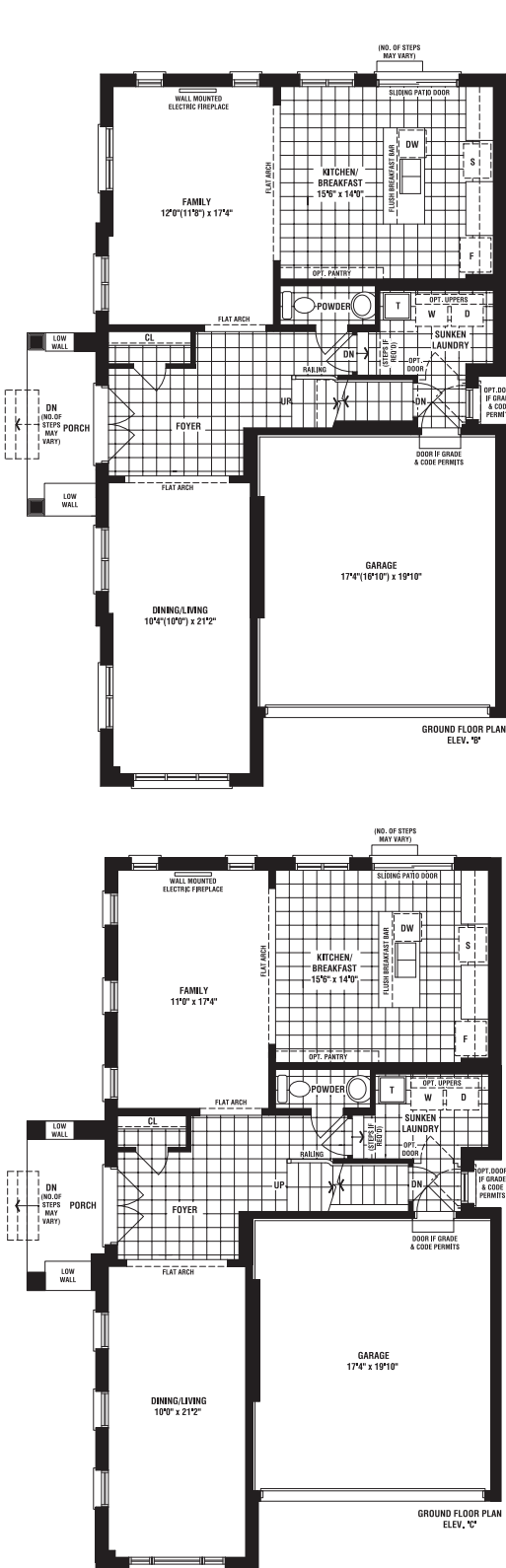
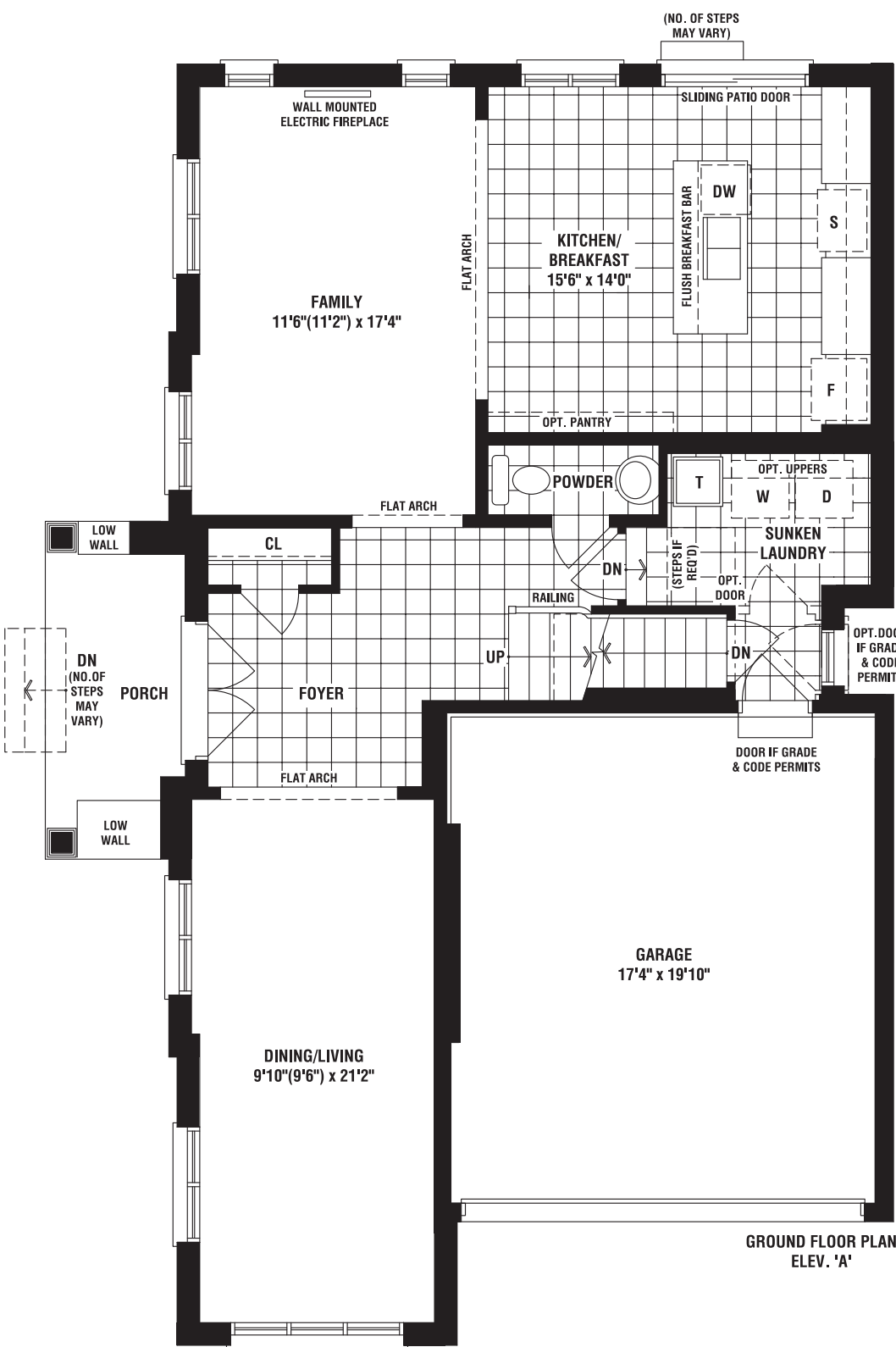
ELEV A • 2411 SQ. FT.



# THE HEDGELANDS

ELEV A • 2411 SQ. FT. | ELEV B • 2469 SQ. FT. | ELEV C • 2404 SQ. FT.

36'



The floorplans and elevations shown, dimensions, specifications and architectural detailing are pre-construction plans and may be revised or improved as necessitated by architectural controls and the construction process. All dimensions are approximate. Actual usable floor space may vary from the stated area. House may be reversed and Purchaser agrees to accept same. Specifications subject to change without notice. Steps may vary at any exterior entrance. Illustrations are Artist's concept. Exterior railings on plans only as required by grade. E. & O.E. MC36-40. 06/23



36'

B



## THE SKYLANDS

ELEV B • 2376 SQ. FT.



OVER 65 YEARS OF EXCELLENCE

fieldgatehomes

36'

A



## THE SKYLANDS

ELEV A • 2368 SQ. FT.



OVER 65 YEARS OF EXCELLENCE

fieldgatehomes



ELEV A • 2368 SQ. FT. | ELEV B • 2376 SQ. FT.

36'



**FIELDGATE**  
HOMES

OVER 65 YEARS OF EXCELLENCE



36'

B



## THE HEARTLANDS

ELEV B • 2144 SQ. FT.



OVER 65 YEARS OF EXCELLENCE

fieldgatehomes

36'

A



## THE HEARTLANDS

ELEV A • 2132 SQ. FT.



OVER 65 YEARS OF EXCELLENCE

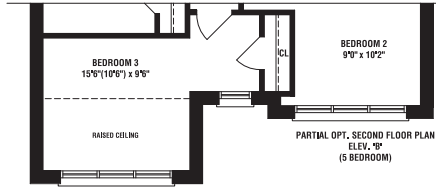
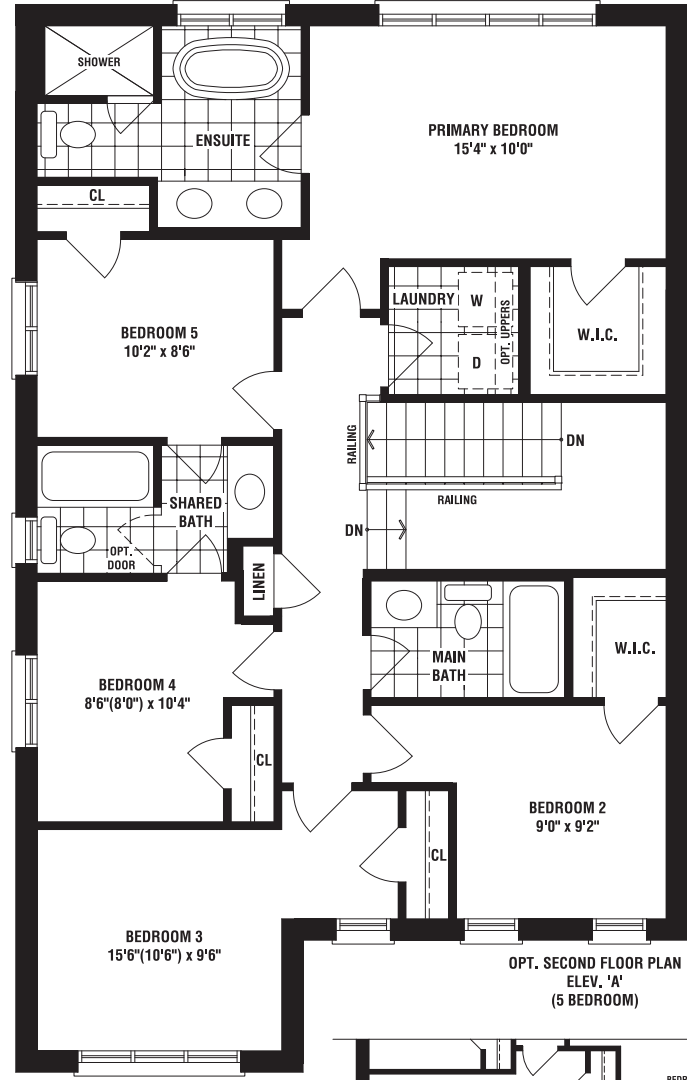
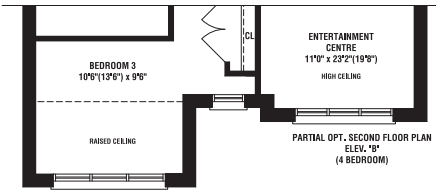
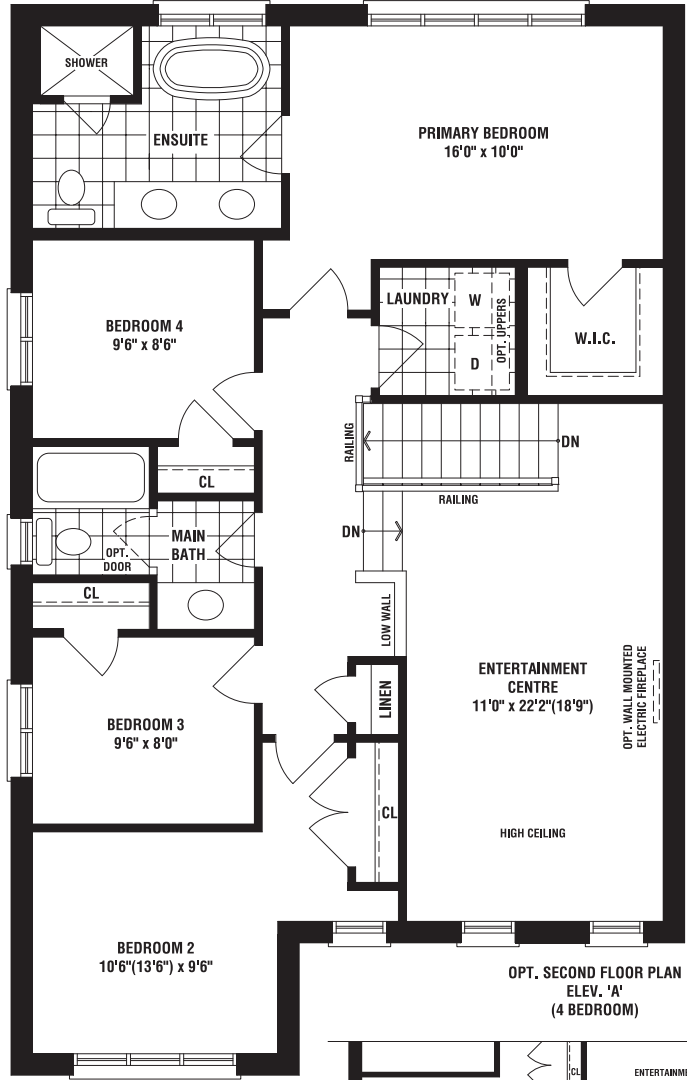
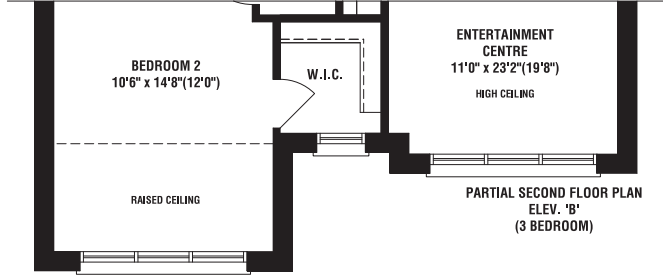
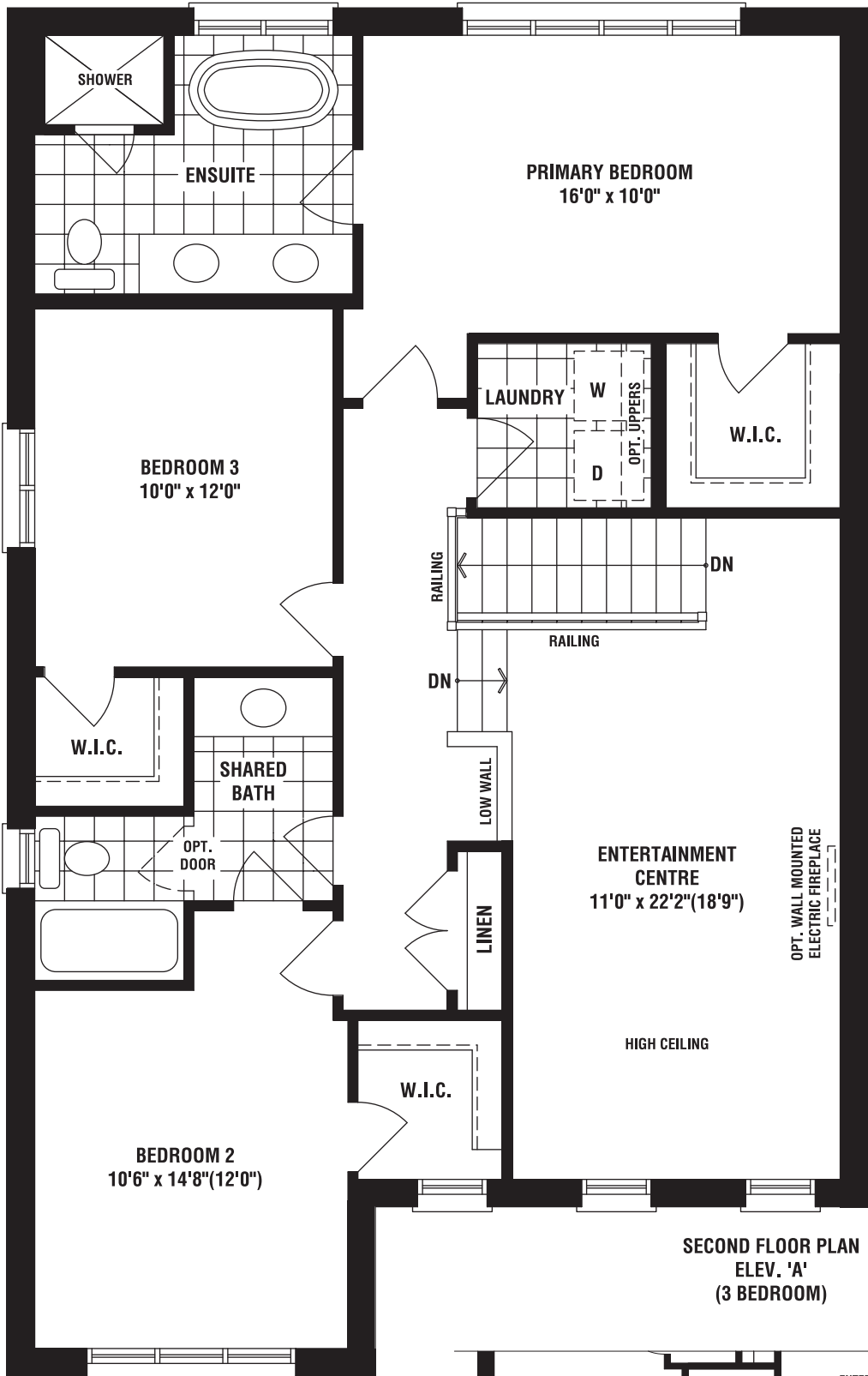
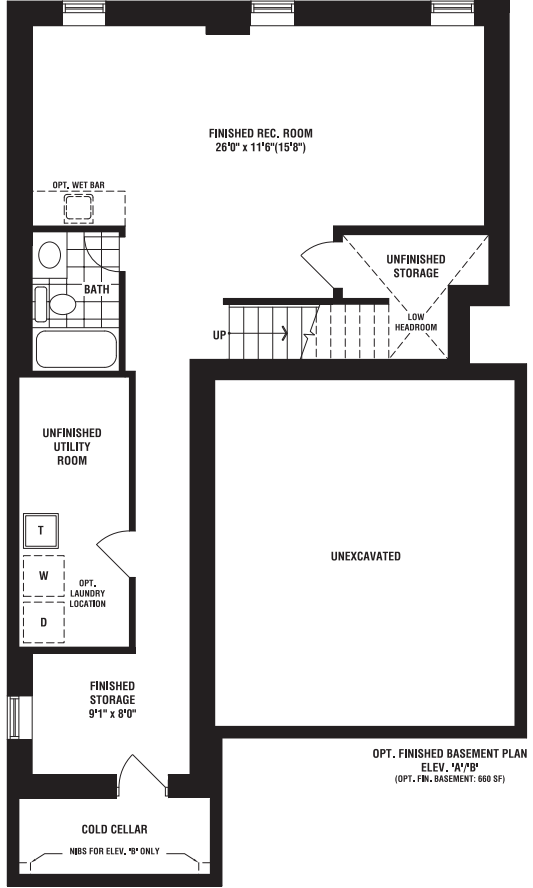
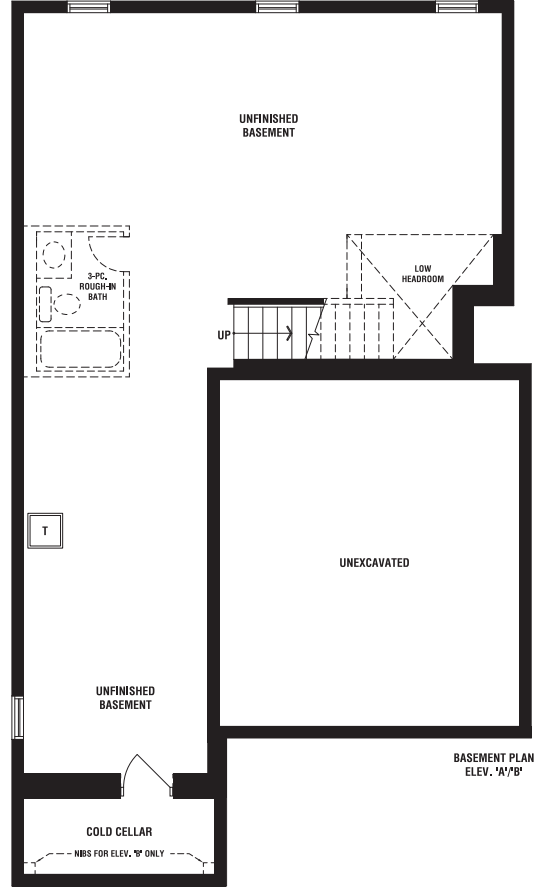
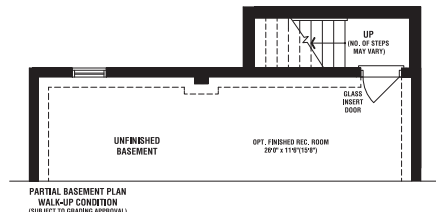
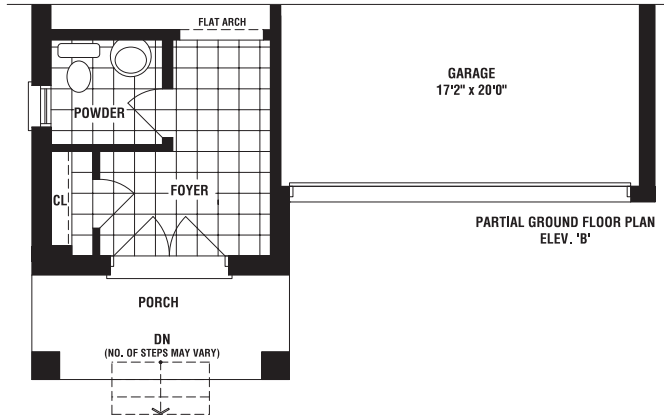
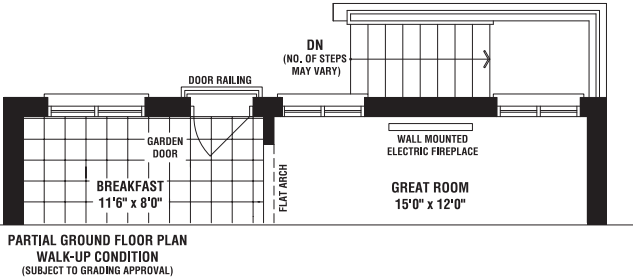
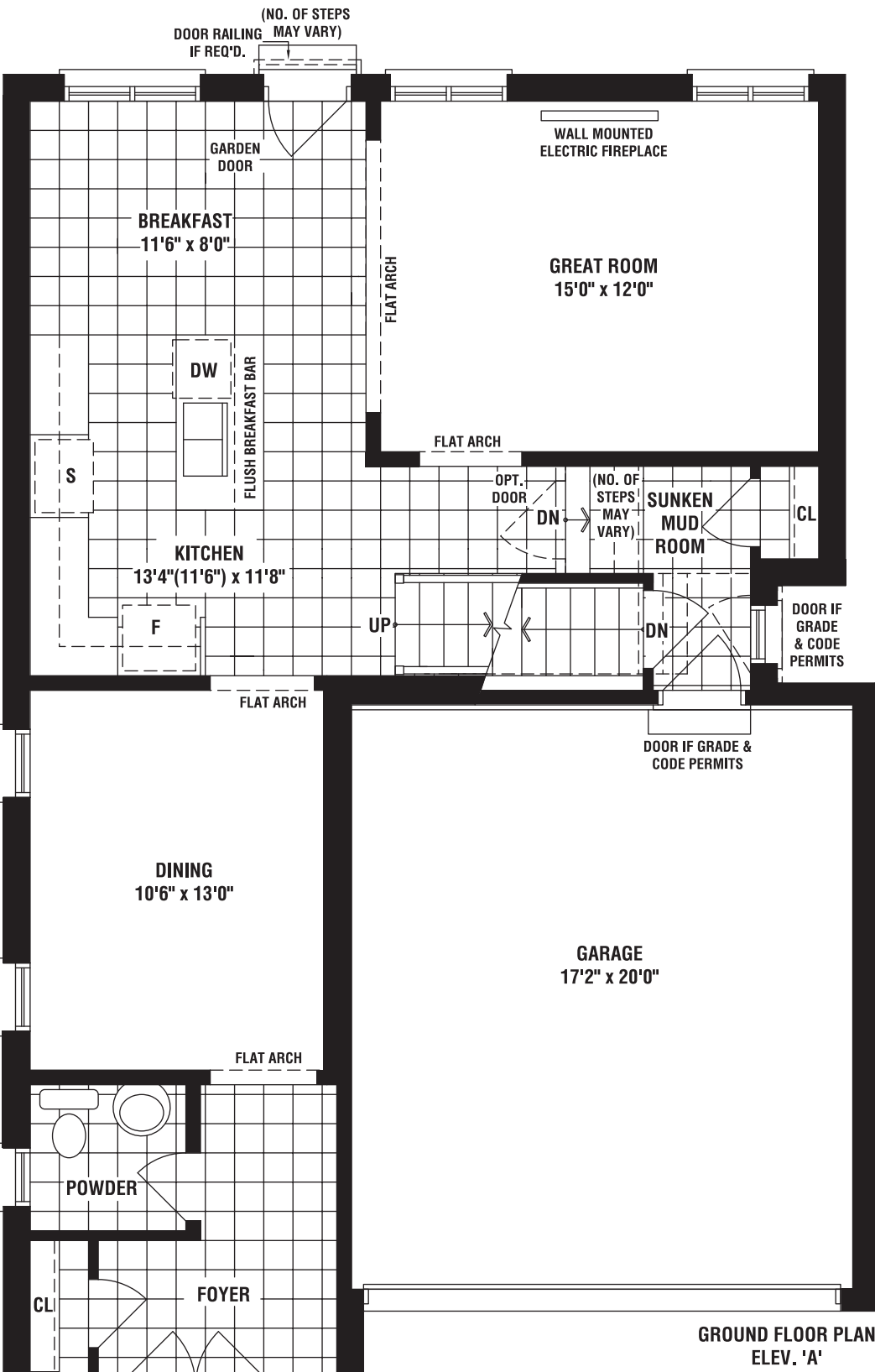
fieldgatehomes



# THE HEARTLANDS

ELEV A • 2132 SQ. FT. | ELEV B • 2144 SQ. FT.

36'





36'

B



## THE FAIRLANDS

ELEV B • 1899 SQ. FT.



OVER 65 YEARS OF EXCELLENCE

fieldgatehomes

36'

A



## THE FAIRLANDS

ELEV A • 1878 SQ. FT.



OVER 65 YEARS OF EXCELLENCE

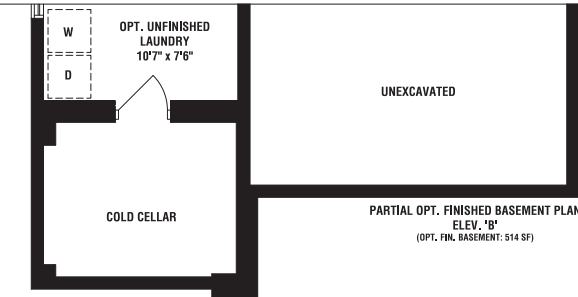
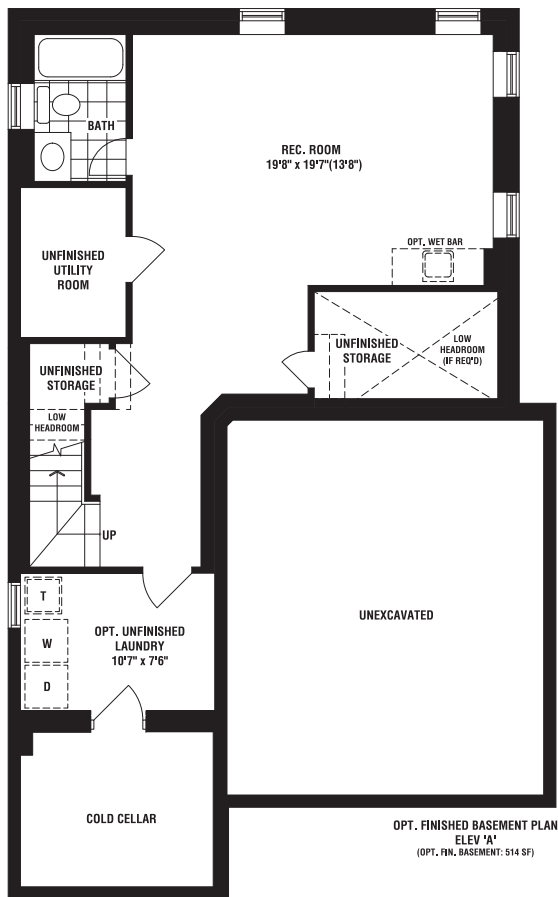
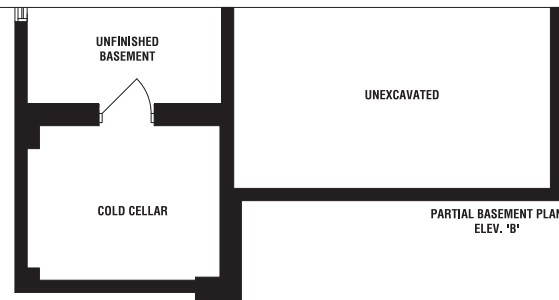
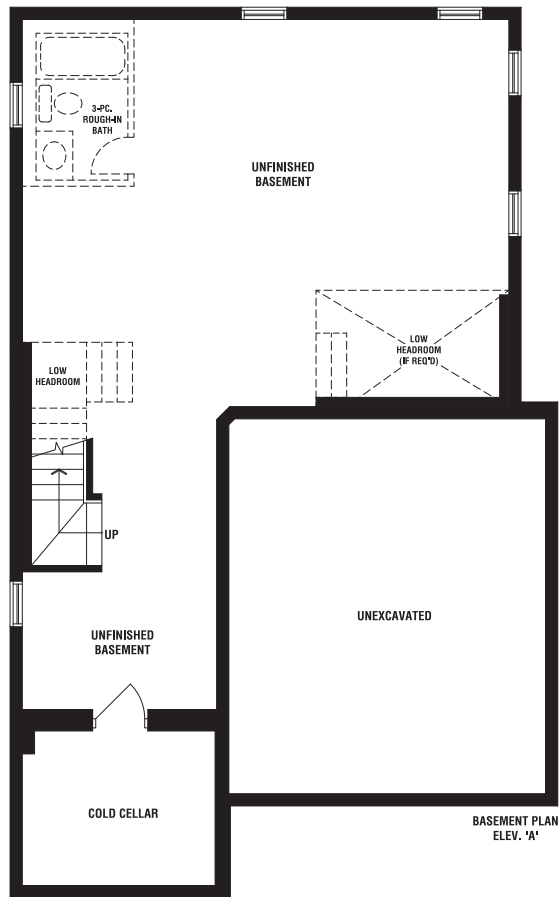
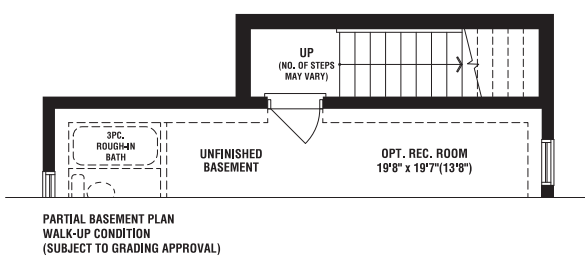
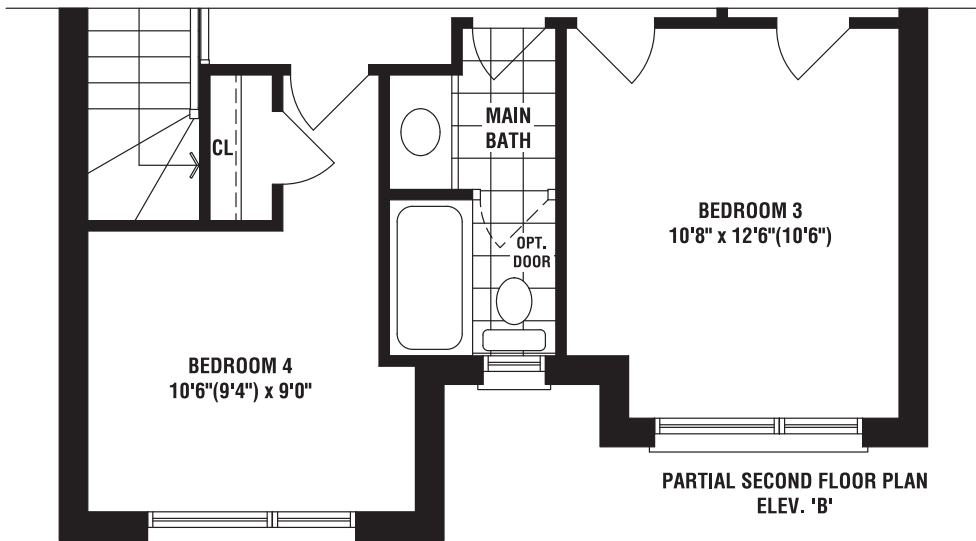
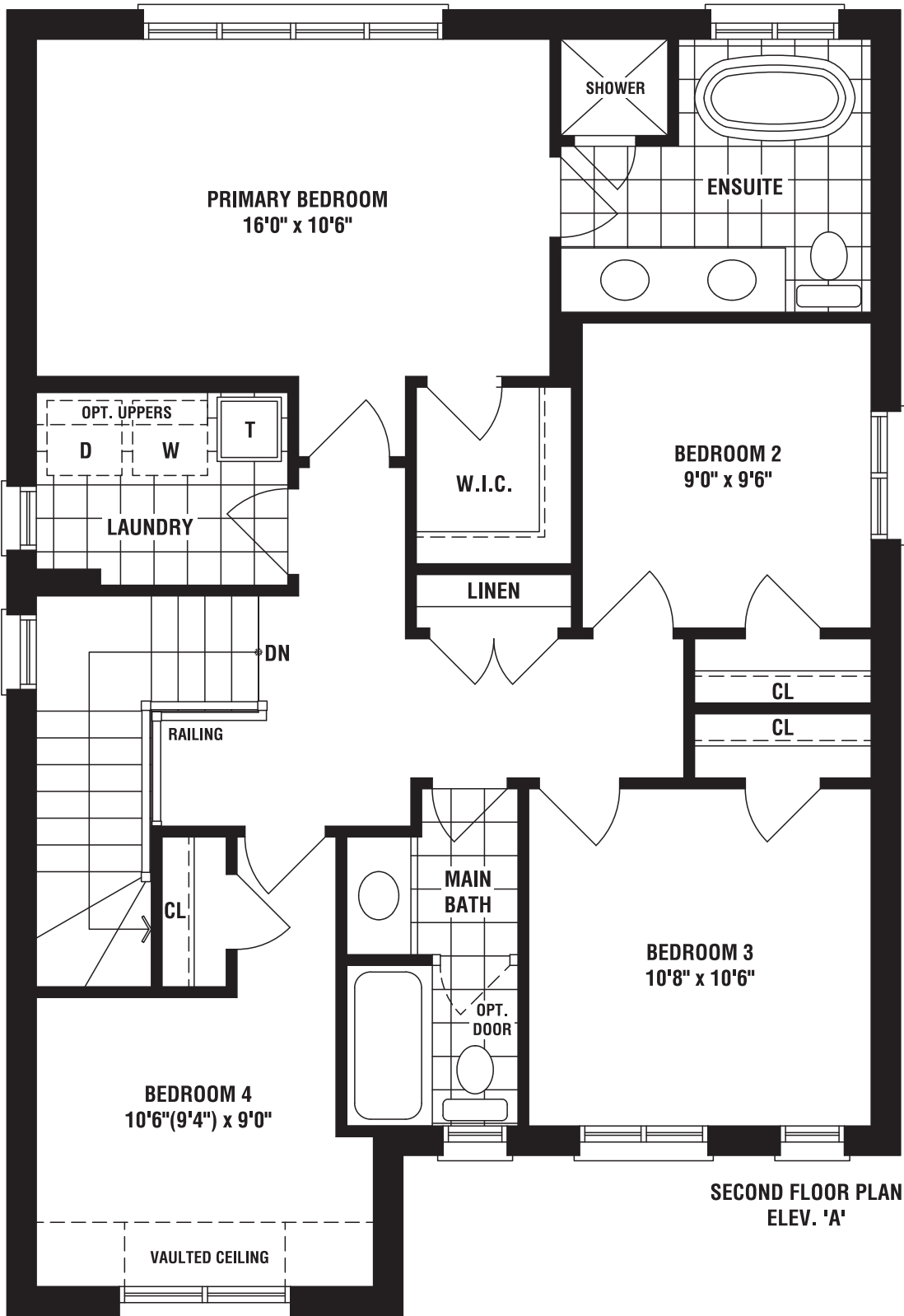
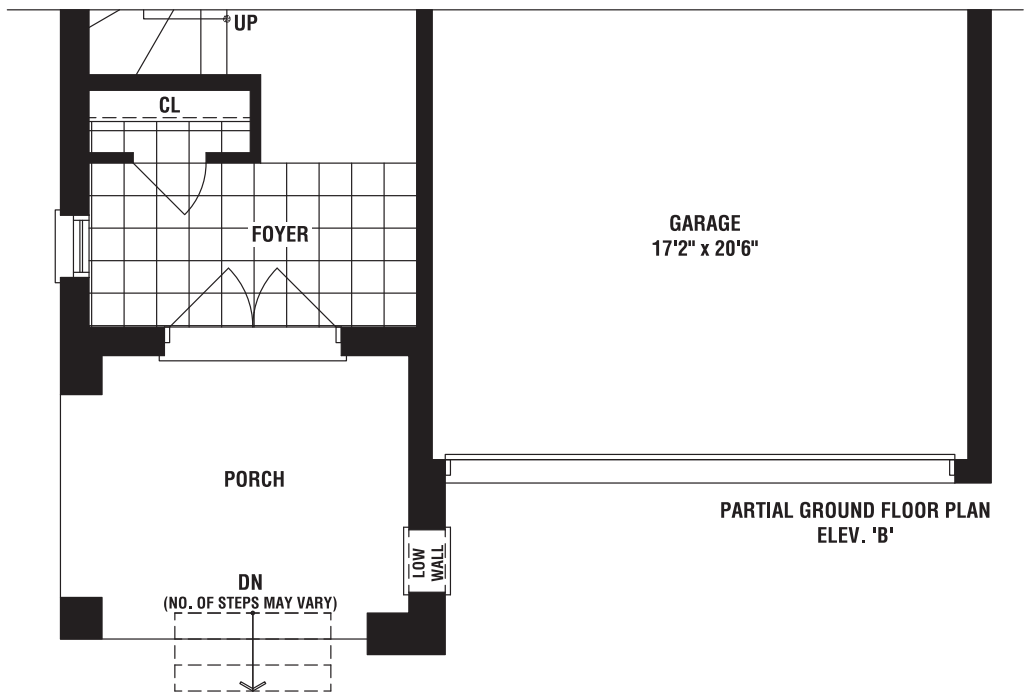
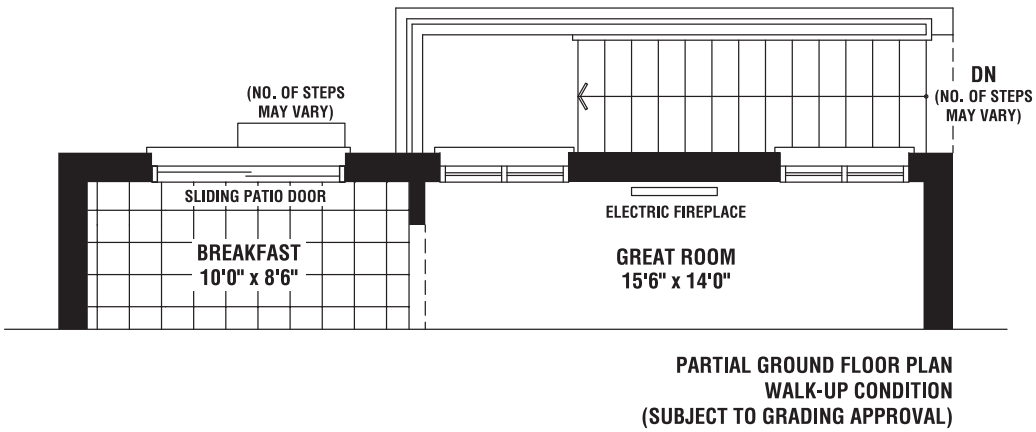
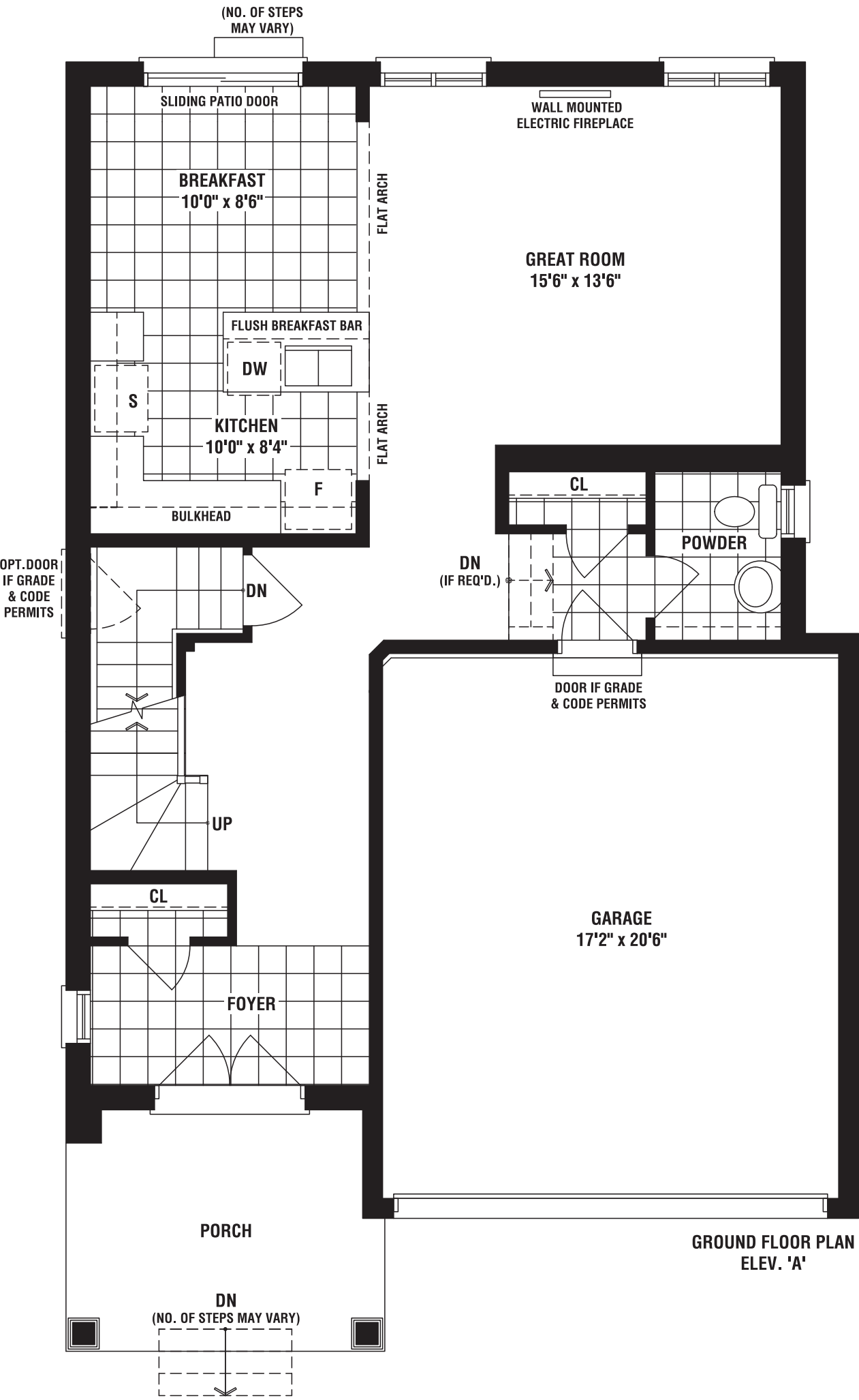
fieldgatehomes



# THE FAIRLANDS

ELEV A • 1878 SQ. FT. | ELEV B • 1899 SQ. FT.

36'





36'

B



## THE CREEKLANDS

ELEV B • 1695 SQ. FT.



36'

A



## THE CREEKLANDS

ELEV A • 1695 SQ. FT.

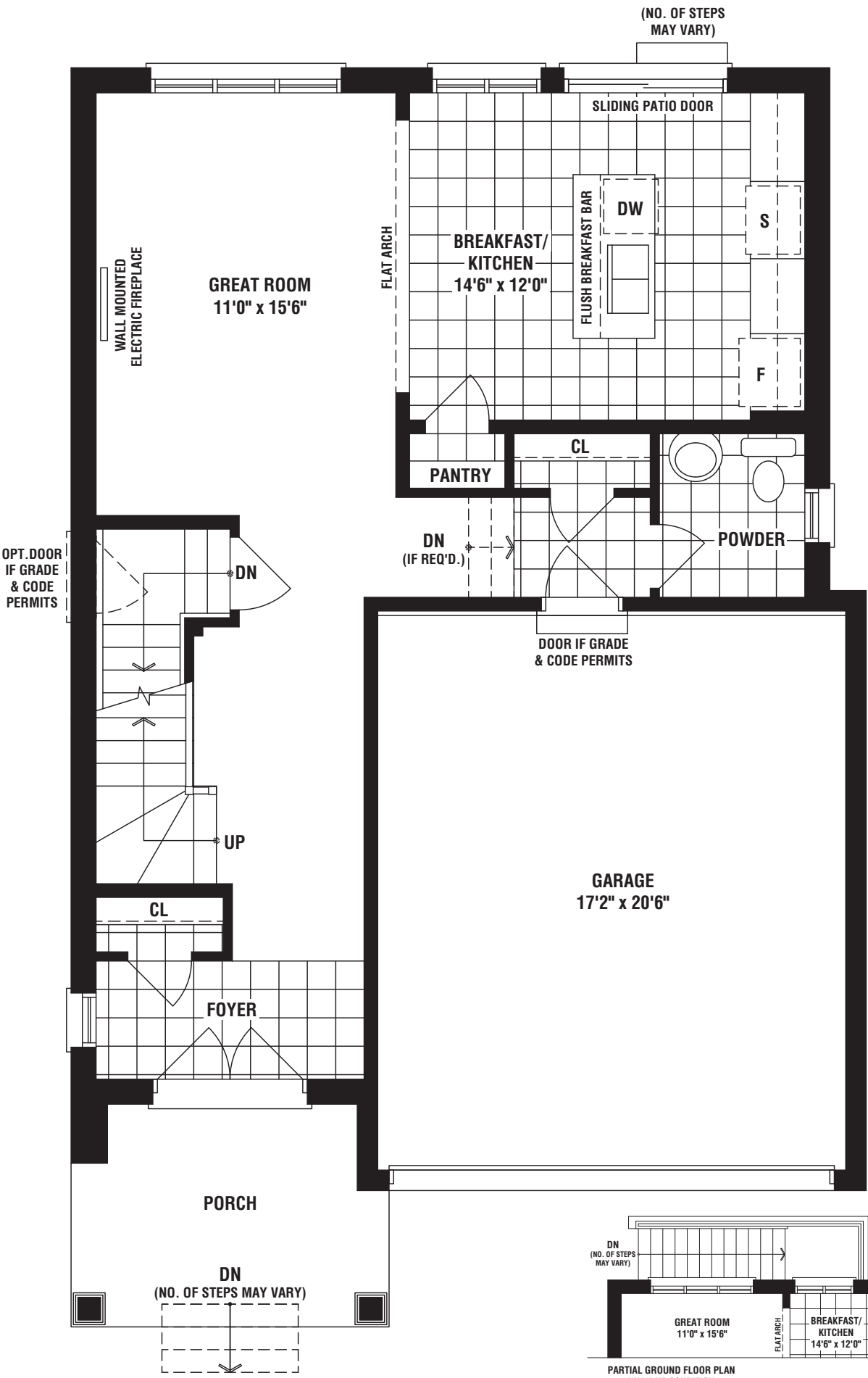




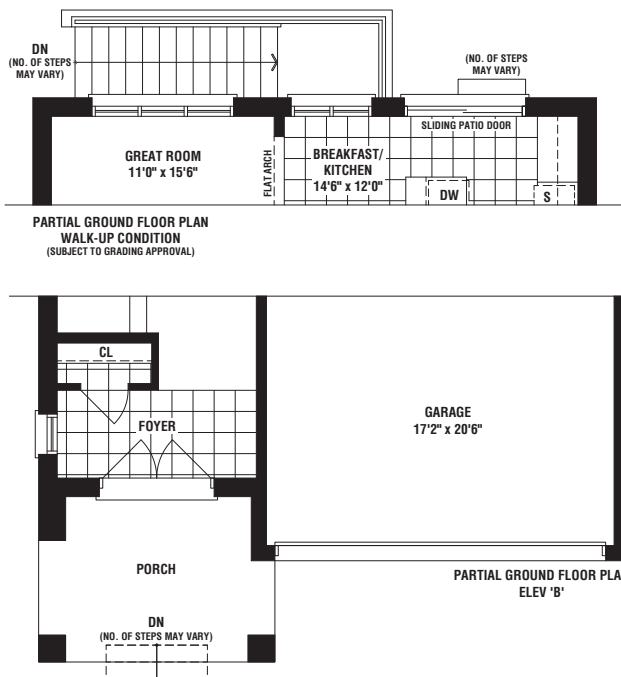
# THE CREEKLANDS

ELEV A • 1695 SQ. FT. | ELEV B • 1695 SQ. FT.

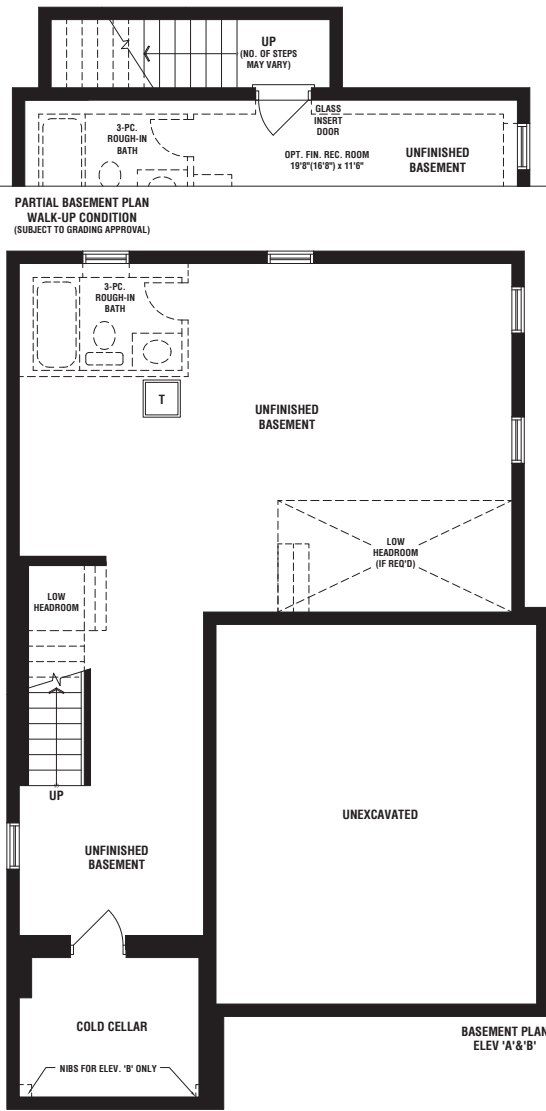
36'



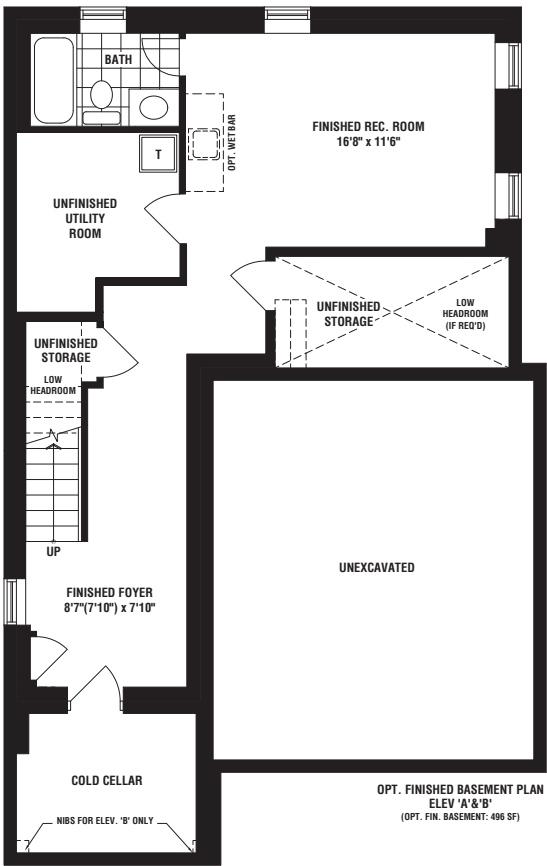
GROUND FLOOR PLAN  
ELEV. 'A'



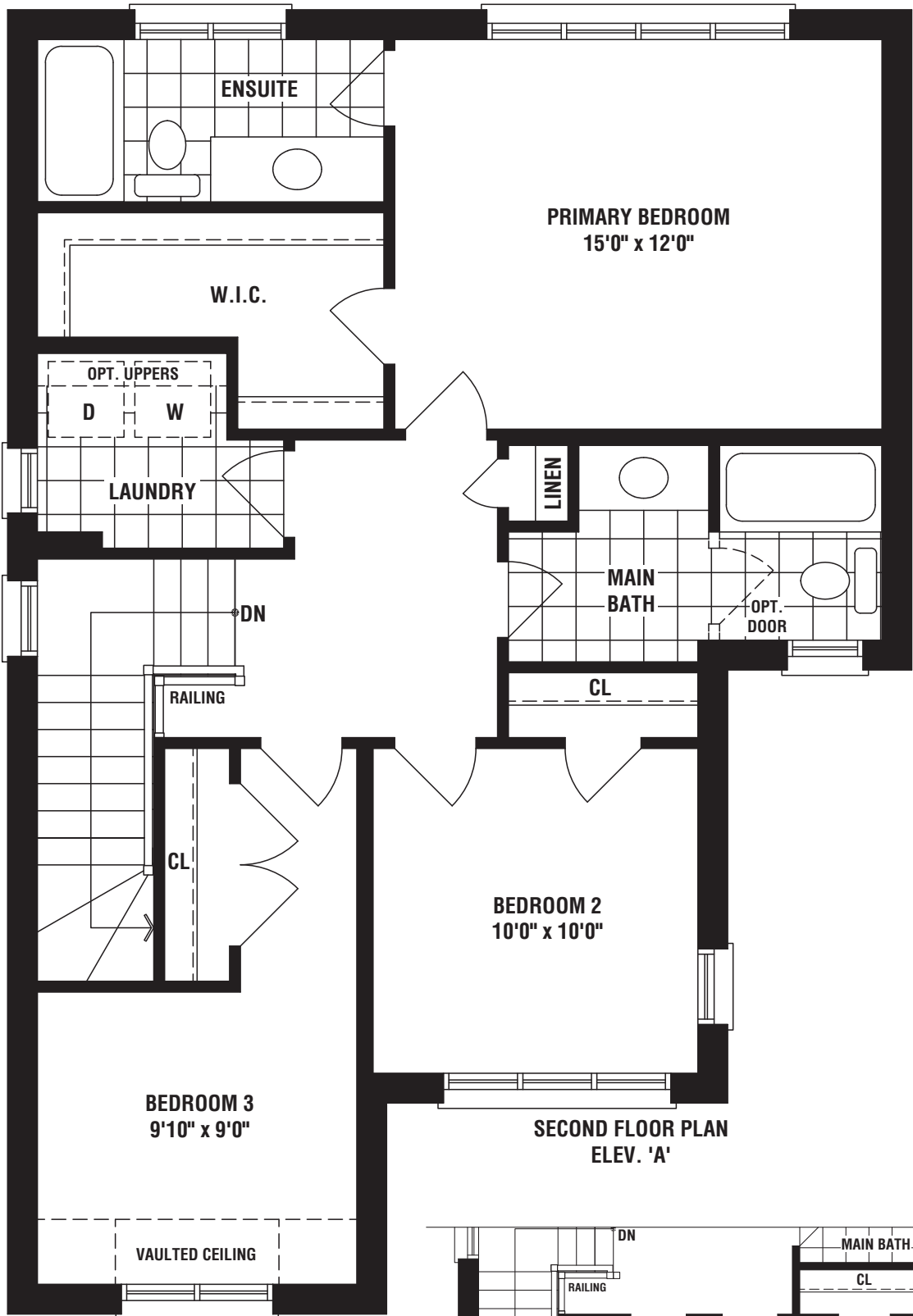
PARTIAL GROUND FLOOR PLAN  
ELEV. 'B'



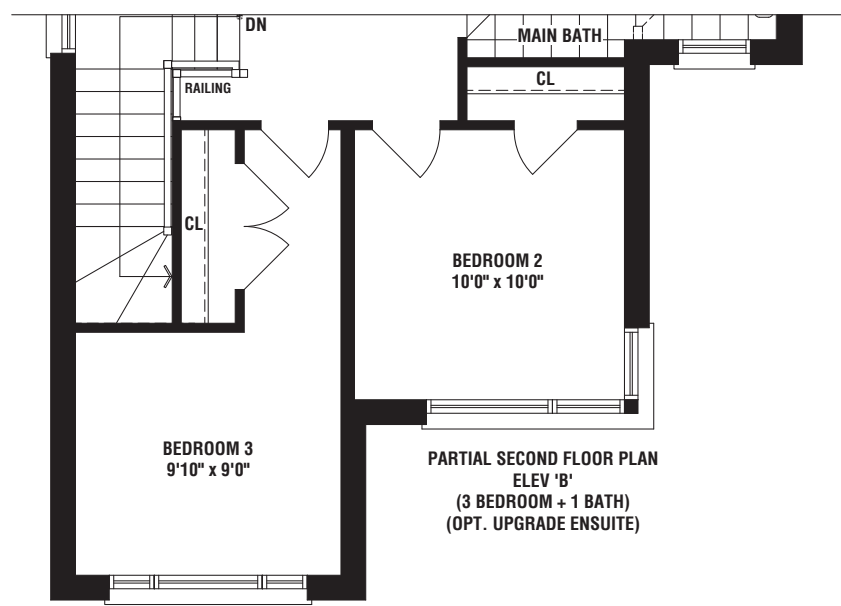
BASMENT PLAN  
ELEV. 'A'



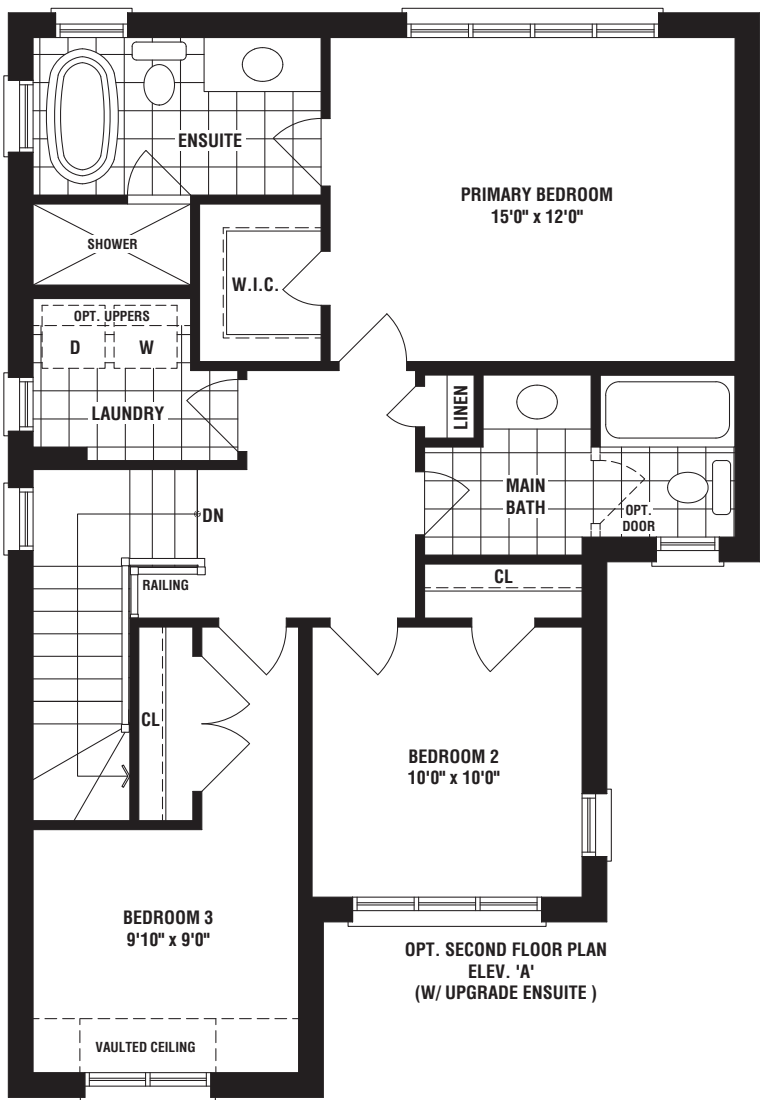
OPT. FINISHED BASEMENT PLAN  
ELEV. 'A'



SECOND FLOOR PLAN  
ELEV. 'A'



PARTIAL SECOND FLOOR PLAN  
ELEV. 'B'



OPT. SECOND FLOOR PLAN  
ELEV. 'A'



36'

B



## THE WOODLANDS

ELEV B • 1547 SQ. FT.



36'

A



## THE WOODLANDS

ELEV A • 1547 SQ. FT.





# THE WOODLANDS

ELEV A • 1547 SQ. FT. | ELEV B • 1547 SQ. FT.

36'

