

# UNIT WB3

## Line 02

2 Bedroom | 2 Bathroom

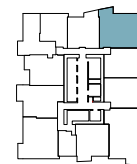
INTERIOR 994 SF / 92 SM

EXTERIOR 52 SF / 5 SM

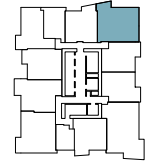
TOTAL 1046 SF / 97 SM



FLOORS 11-15



FLOORS 16-41



⚠ Stated dimensions are measured to the exterior boundaries of the exterior walls and the centerline of interior demising walls and in fact vary from the dimensions that would be determined by using the description and definition of the "Unit" set forth in the Declaration (which generally only includes the interior airspace between the perimeter walls and includes interior structural components). For your reference, the area of the Unit, determined in accordance with those defined unit boundaries, is 994 SF / 92 SM. Note that measurements of rooms set forth on this floor plan are generally taken at the greatest points of each given room (as if the room were a perfect rectangle), without regard for any cutouts. Accordingly, the area of the actual room will typically be smaller than the product obtained by multiplying the stated length times width. All dimensions are approximate and may vary with actual construction, and all floor plans and development plans are subject to change.

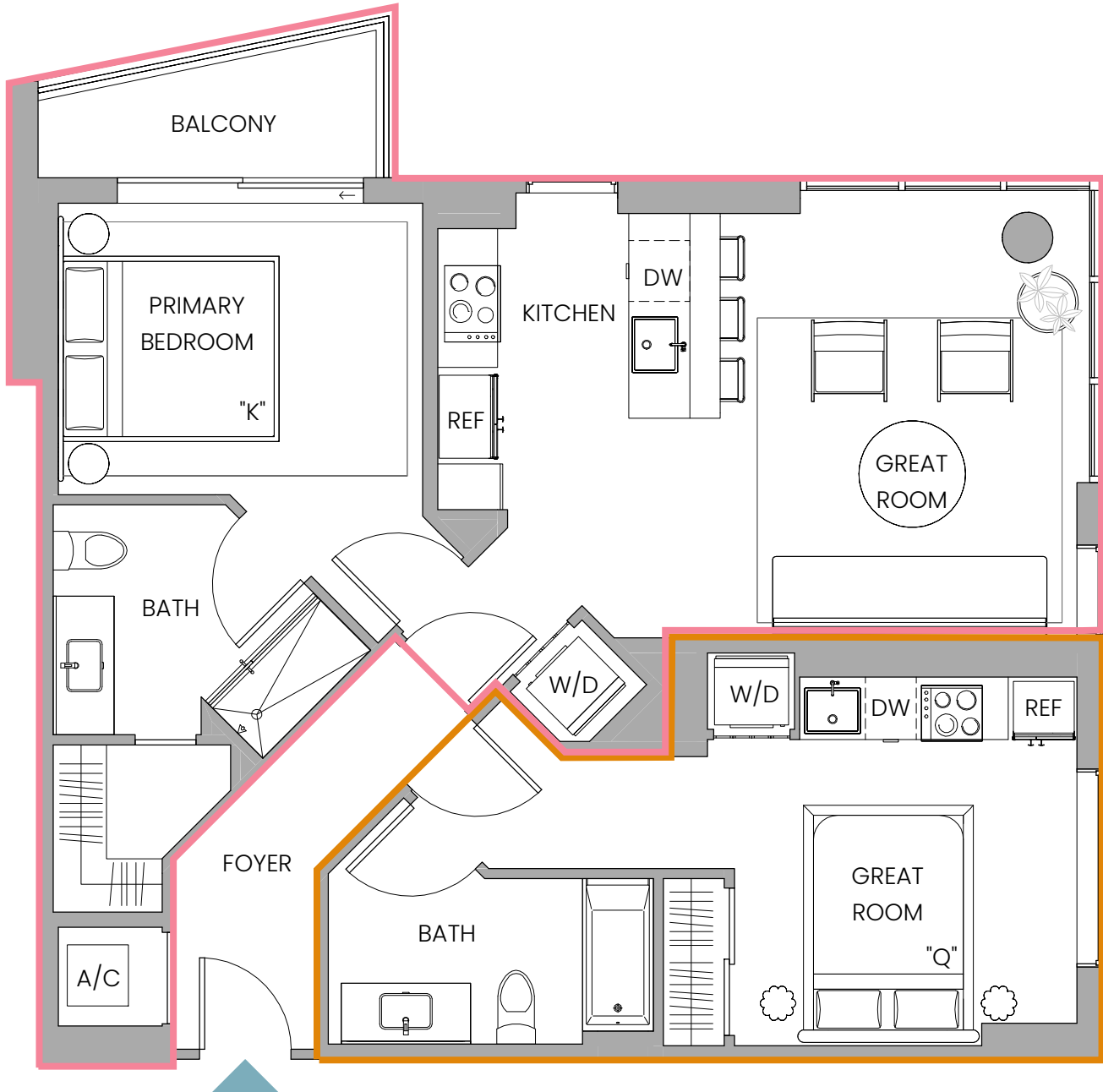
# UNIT WB3 OPTIONAL SPLIT



## Line 02

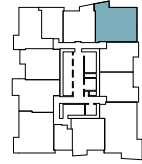
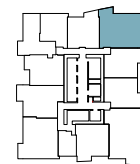
1 Bedroom | 1 Bathroom  
 INTERIOR 693 SF / 64 SM  
 EXTERIOR 52 SF / 5 SM  
 TOTAL 745 SF / 69 SM

Studio | 1 Bathroom  
 INTERIOR 301 SF / 28 SM



FLOORS 11-15

FLOORS 16-41



⚠ Stated dimensions are measured to the exterior boundaries of the exterior walls and the centerline of interior demising walls and in fact vary from the dimensions that would be determined by using the description and definition of the "Unit" set forth in the Declaration (which generally only includes the interior airspace between the perimeter walls and includes interior structural components). For your reference, the area of the Unit, determined in accordance with those defined unit boundaries, is 693/301 SF / 64/28 SM. Note that measurements of rooms set forth on this floor plan are generally taken at the greatest points of each given room (as if the room were a perfect rectangle), without regard for any cutouts. Accordingly, the area of the actual room will typically be smaller than the product obtained by multiplying the stated length times width. All dimensions are approximate and may vary with actual construction, and all floor plans and development plans are subject to change.

# UNIT WB1

Line 10, Floors 03-05

Line 08, Floors 11-15 and 16-41



2 Bedrooms | 2 Bathrooms

**Floors 3-5**

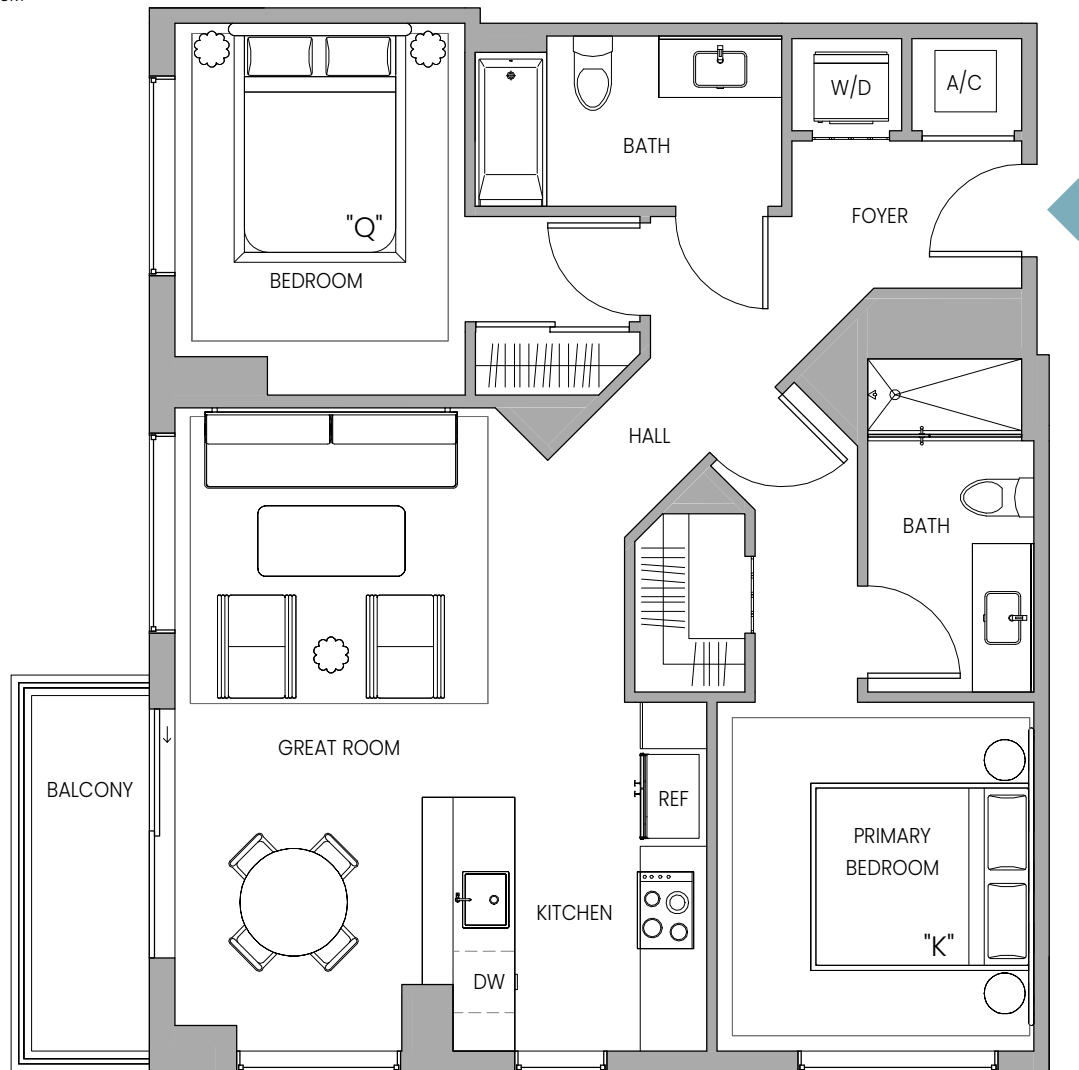
INTERIOR 959 SF / 89 SM

**Floors 11-15 and 16-41**

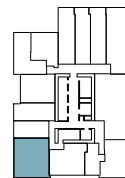
INTERIOR 970 SF / 90 SM

EXTERIOR 58 SF / 5 SM

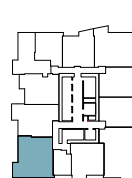
TOTAL 1028 SF / 95 SM



FLOORS 03-05



FLOORS 11-15



FLOORS 16-41



## Note

No Balcony on Floor 03-05

☞ Stated dimensions are measured to the exterior boundaries of the exterior walls and the centerline of interior demising walls and in fact vary from the dimensions that would be determined by using the description and definition of the "Unit" set forth in the Declaration (which generally only includes the interior airspace between the perimeter walls and includes interior structural components). For your reference, the area of the Unit, determined in accordance with those defined unit boundaries, is 959/970 SF / 89/90 SM. Note that measurements of rooms set forth on this floor plan are generally taken at the greatest points of each given room (as if the room were a perfect rectangle), without regard for any cutouts. Accordingly, the area of the actual room will typically be smaller than the product obtained by multiplying the stated length times width. All dimensions are approximate and may vary with actual construction, and all floor plans and development plans are subject to change.



# UNITWB4



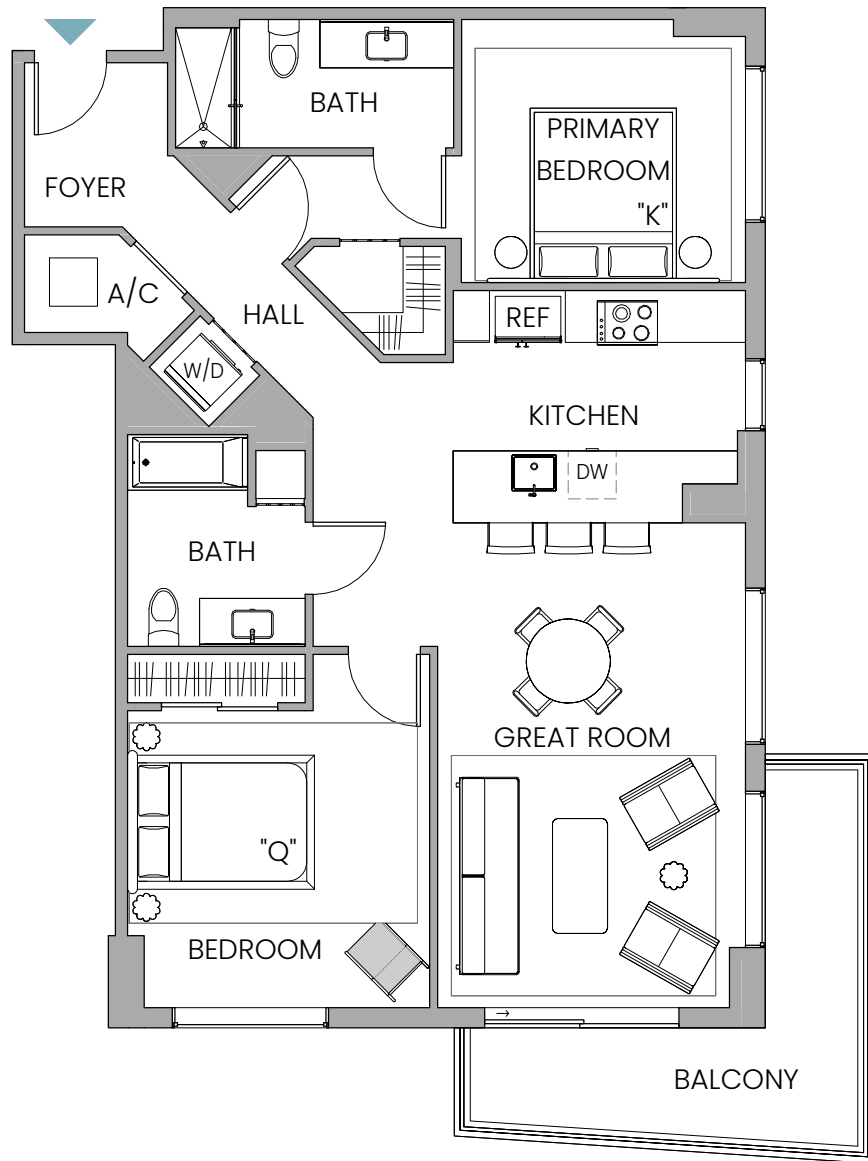
## Line 11

2 Bedrooms | 2 Bathrooms

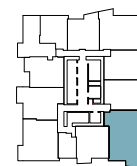
INTERIOR 1165 SF / 108 SM

EXTERIOR 140 SF / 13 SM

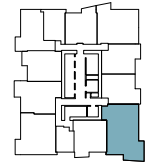
TOTAL 1305 SF / 121 SM



FLOORS 11-15



FLOORS 16-41



ⓘ Stated dimensions are measured to the exterior boundaries of the exterior walls and the centerline of interior demising walls and in fact vary from the dimensions that would be determined by using the description and definition of the "Unit" set forth in the Declaration (which generally only includes the interior airspace between the perimeter walls and includes interior structural components). For your reference, the area of the Unit, determined in accordance with those defined unit boundaries, is 1165 SF / 108 SM. Note that measurements of rooms set forth on this floor plan are generally taken at the greatest points of each given room (as if the room were a perfect rectangle), without regard for any cutouts. Accordingly, the area of the actual room will typically be smaller than the product obtained by multiplying the stated length times width. All dimensions are approximate and may vary with actual construction, and all floor plans and development plans are subject to change.

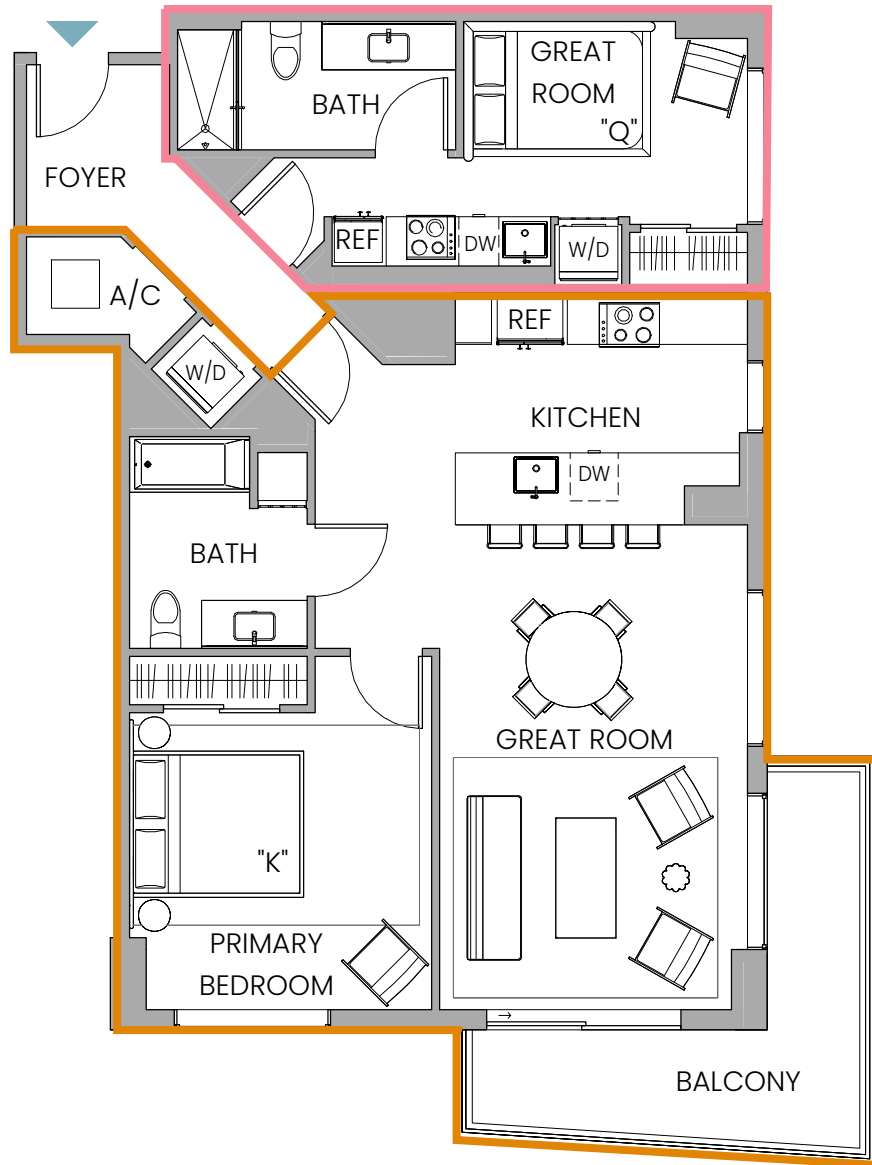
# UNIT WB4 OPTIONAL SPLIT



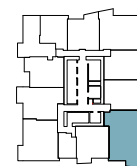
## Line 11

1 Bedroom | 1 Bathroom  
 INTERIOR 901 SF / 84 SM  
 EXTERIOR 140 SF / 13 SM  
 TOTAL 1041 SF / 97 SM

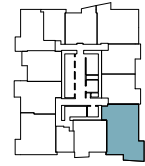
Studio | 1 Bathroom  
 INTERIOR 264 SF / 24 SM



FLOORS 11-15



FLOORS 16-41



ⓘ Stated dimensions are measured to the exterior boundaries of the exterior walls and the centerline of interior demising walls and in fact vary from the dimensions that would be determined by using the description and definition of the "Unit" set forth in the Declaration (which generally only includes the interior airspace between the perimeter walls and includes interior structural components). For your reference, the area of the Unit, determined in accordance with those defined unit boundaries, is 901/264 SF / 84/24 SM. Note that measurements of rooms set forth on this floor plan are generally taken at the greatest points of each given room (as if the room were a perfect rectangle), without regard for any cutouts. Accordingly, the area of the actual room will typically be smaller than the product obtained by multiplying the stated length times width. All dimensions are approximate and may vary with actual construction, and all floor plans and development plans are subject to change.